

“MYSTERIOUS AUSTRALIA”

Vol. 7, Issue No 12

DECEMBER, 2017.



INSIDE:

- **NEW MAYAN FIND BEYOND THE BLUE MOUNTAINS.**
- **NEW WOLLEMI URU DISCOVERY.**
- **SEARCHING FOR THE ‘IMPOSSIBLE’ – LIVING DINOSAURS ON THE BLUE MOUNTAINS, NSW.**
- **UPDATE ON AUSTRALIA’S UNKNOWN MYSTERY ‘BIG CATS’.**

NEW MAYAN FIND BEYOND THE BLUE MOUNTAINS.

by Dr [h.c.] Rex Gilroy PhD.
Copyright © Rex Gilroy 2017.

On Monday 4th December, 2017 together with my wife Heather, and field assistants Phil Whittaker & Graham Merrick, I returned to the Wollemi National Park in search of further Uru civilisation relic evidence. In the course of searching a remote location reported on in our previous [November 2017] Mysterious Australia Newsletter, I came upon something quite unexpected, in the form of a small sandstone image.

I immediately recognised the relic as a deteriorated open-mouth head of the Mayan Jaguar God, Ba'lam, of which any facial features had worn away. As jaguars have never been native to Australia, I have suggested that the 'Australian Panther', a giant marsupial cat replaced the original image retaining the same name.

Measuring 10.5cm length by 9.5cm width and 3cm in depth, the relic may date to the period 250 AD [or earlier], the approximate date given to the Mayan colony and three crumbling pyramidal structures discovered in the centre of the Wollemi wilderness back in June 2010. Those wishing to read a full report on this great find [with photos] are directed to Rex & Heather Gilroy's book "The Jaguar And the Serpent – Lost Pacific voyages of the Uru and Amerindians" [URU Publications 2016], obtainable from URU Publications PO Box 202, Katoomba 2780 NSW. Phone 02 47 823 441 for purchase details.

Where exactly these, and all the other structures described in this newsletter article are exactly located is our secret, for to make their true locations known to the public at large, would invite the unwanted attentions of vandalistic treasure-hunters, vandals generally, the media and inquisitive mindless public; not to forget plagiarists always ready to take the credit for someone else's hard work. Here we are reminded of those people who years ago, stole the Gilroy's great discovery of the "Gympie Pyramid" [at least we had rescued practically every stone image and other important relics recovered there!].

As our readers already know, structural remains occur throughout Australia, as evidence of the many ancient peoples who have, at various times in the dim past, sailed to these shores and colonised the land, only to eventually be replaced by yet other cultures. So it was with the Amerindian cross-Pacific voyaging colonists.

Today it is hard for many people, long versed in British colonial history, to accept the proposition that this country was once settled at various times by Amerindian peoples from Middle and South America. In response we say, read "Jaguar and the Serpent" and be amazed!

The August 2016 issue of our "Mysterious Australia" newsletter carries the account of our discovery of the Mayan settlement that once stood where the modern city of Newcastle is now situated. It was from here that Mayan colonists gradually penetrated Deep inland to the fringe of the central west, in the course of which they conquered the depths of the Wollemi to create the "City of Kukulkan", as described in rock inscriptions, and, as the population grew, another settlement we have discovered was named the "City of Can", ie "City of the Snake". We identified a ruler of the City of Kukulkan some time ago as 'King Beb-Ku'. [ie Beb means 'King', thus King Ku].

Since then our discovery that colonists followed the Hunter-Goulburn River systems west to enter the fringe of the Central West, has resulted in the discovery of a modified hill pyramid temple, which a rock inscription describes as the "Temple built by King Sun-Snake". He probably ordered the terraced pyramid temple's construction around 250 AD. The temple was the centrepiece of a large settlement which he appears to have established earlier.

We measured this structure at 183 metres square by 61 metres tall. Despite areas of erosion eight terraces were identified which shows the temple had been dedicated to the Moon-God, Itzamna. The two stones were recovered near the east base of the structure. Other inscribed stones still lying half-buried about the site await recovery and translation.

The King Sun-Snake image measures 30cm tall by between 11 and 15 cm in width between 4 and 6.5cm in depth. The faded condition of the inscriptions [in some cases] on both stones required chalk-

outlining for photographic purposes. Glyphs on this image read: *“Beb Ku the Sun-Snake. King of this land”*. Beb Ku holds a mace of office in his right hand and he displays what appear to be artificially lengthened ears. The second and largest inscribed stone measured 36cm tall by 28cm in length and 11cm in width. It shows on the rear top side the glyphs for *“Snake-Father of creation”*. There is a half-moon shaped mouth, being the glyph for Aac, ie *“Lord Aac the Cultivator”*, who was a minor deity servant of Itzamna who watched over the growing of crops. The right profile bears glyphs above the right arm of Itzamna holding a staff-like glyph for *“Land of Kui”*. The glyphs above read: *“Creator-Snake Father of the Land of Kui, the Father-Land. The God’s light shines on the Land of Kui”*. [Kui-ancient Mayan name for Australia].

There are glyphs on the left side of the face which read *“Snake Father of creation”*. This leads into the hieroglyphs covering the left side of the stone, which state: *“Temple of the Moon-God Itzamna. Creator of Life in the Land of Kui, the great land of the tree of Life, warmed by the God’s glow. Upon the Temple give blood in sacrifice to the God’s bowl”*.

Our field work continues on these sites of ancient Australian Amerindian colonisation. We hope that our non-profit efforts to reveal the hidden mysteries of this land, and our love of the Australian bush will inspire others, particularly the young, to follow in our footsteps. Everything that I in particular have done in a lifetime’s field research has been to gather knowledge for knowledge sake without thought of personal gain, not like certain would-be copy-cat plagiarists we could name!

The search for evidence of ancient Amerindian colonisation of Australia may sound like the scenario for another Indiana Jones movie, except our search is real and we have the recovered relics to prove it!

-0-



Dr Rex Gilroy, PhD [honoris causa], who recently turned 74 years of age, together with his devoted wife Heather, for the past 45 years, has continued to search the Australian bush he loves, as they uncover the many hidden mysteries of this land .

Photo copyright © Rex Gilroy 2017.



The small sandstone image of an ancient Mayan open-mouth Jaguar God, right profile, recovered by him in the depths of Wollemi National Park. Photo copyright © Rex Gilroy 2017.

The Jaguar head image. It parallels other examples from Mexico. The Gilroys have been discovering evidence of Mayan and other ancient Amerindian contacts with Australia, ever since they uncovered a 2,000 year old Mayan colony in the Atherton jungles of far north Queensland in 2000.

Photo copyright © Rex Gilroy 2017.





*Frontal image of the King Sun-Snake sandstone idol recovered near the Moon-God pyramid-temple.
Photo copyright © Rex Gilroy 2017.*



*Right profile of the King Sun-Snake image.
Photo copyright © Rex Gilroy 2017.*



*Left profile of the King Sun-Snake image.
Photo copyright © Rex Gilroy 2017.*



*The Moon-God image. Right profile.
Photo copyright © Rex Gilroy 2017.*



*The Moon-God image, left profile.
Photo copyright © Rex Gilroy 2017.*



*The rear inscription stating: “Snake
Father of creation”.*
Photo copyright © Rex Gilroy 2017.



*The front head image of the Moon-God
stone.*
Photo copyright © Rex Gilroy 2017.



The great earthen pyramid temple of the Moon-God. It has not escaped ages of erosion.
Photo copyright © Rex Gilroy 2017.



Heather, pleased at the discovery.
*Photo copyright © Rex Gilroy
2017.*

NEW WOLLEMI URU DISCOVERY.

by Dr [h.c.] Rex Gilroy PhD.

Copyright © Rex Gilroy 2017.

The recent major discoveries in the Wollemi wilderness, reported in our November newsletter, have brought 'Team Gilroy' back into the bush to resume our investigation of a large settlement, established by the Uru at the dawn of recorded history.

The megalithic structures found hereabouts are so ancient that their outer patina has been weathered away. On Monday 3rd December 2017 Heather & Rex Gilroy, accompanied by our indispensable field assistants, Graham Merrick & Phil Whittaker returned to the scene. On this search we found that a number of natural rock formations had once been utilised, with libation bowls cut into the summits facing the east. As we were in a swampy forested region we had to be careful of snakes, but happily apart from a couple of snake trails in dirt we saw none. A highlight of the search was the discovery of five inscribed stones, half-buried in the leaf litter covered soil. One of these was an oval-shaped stone containing two eyes and a mouth with script, which read: *"Behold the growing Light of Nim. Observe the God moving west"*. A votive offering inscription, like the other inscriptions it had to be chalk-outlined for photographic purposes due to the degree of weathering of the stone and its engravings. It measured 20.4 cm in length by 13.5cm width and 6cm in depth.

Another inscribed stone was roundish and deep, measuring 13cm in length by 11cm width and 7cm in depth. It bore a sun with rays image above the square glyph for 'land', ie *"Nim shines over the land"*.

An orangey sandstone slab caught my eye. Upon plucking it from the ground I found that, while the front of the stone bore the image of I-na, Eagle of the Sun with the right wing pointing downward to a sun-disc, the back of the relic had been eaten away by ages of weathering. The meaning of the image was that I-na protected the Sun to guarantee the continuance of his light and life-giving heat. The relic measured 23.2cm length by 15cm in width and 4.5cm in depth.

Yet another sandstone slab soon followed - an image of Ara the Moon-Goddess, displaying a single eye, the moon itself. Beneath this was the glyph for *"Orbit of the Moon"*, beside which was the left arm pointing down to glyphs below which read: *"Orbit of the Moon-Goddess who enlightens people. At her temple is placed an offering by Laba"*. This stone measured 25cm in length by 12.5cm width and 5cm in depth.

The last votive offering inscribed stone found was a thin, broken slab bearing the face of Nim, upon whose forehead was a sun-disc. The back of the flat stone contained the inscription: *"An offering to the Goddess at the Temple of the light of Ara"*. The specimen measured 16.5cm length by 11 cm width and 1.5cm in depth.

Although the great Sun-God was the subject of these inscribed stones, we already know that the area we were in was part of a massive region covering at least three valleys and open plain to the west, which were all part of a vast Uru kingdom dedicated to the Moon-Goddess, Ara. A massive mountain top head of the Goddess, once carved by a great number of workers, and situated at another locality, looks east to the birth-cave of herself and her brother Nim.

Another badly worn head of the Goddess, once carved from a large sandstone rock, stands amid swamp water looking south. By the time Phil, Graham, Heather and I discovered this image we had begun running out of daylight and left its closer study until our next investigation here.

Meanwhile, prior to this discovery we found a libation gutter, which carried the water from an open libation bowl cut in the top of a large sandstone formation, down the 'gutter' over an inscription before reaching the soil.

The inscription covered an area of 33cm tall by 29cm width, and consisted of a Snake enclosing the inscription on the right side and partly across the top, facing a glyph for water, beneath which was the glyph for *"Temple on high"*, in this case on a nearby hill. The inscription read: *"The Moon Serpent [Rana] guards the temple. Here pour libations to the temple on the hill"*.

We drove home via a stop at a picnic ground, discussing the day's finds. We plan another visit to the domain of the Moon-Goddess in the near future to hopefully uncover further of her secrets hereabouts.



*The oval-shaped votive offering stone, with its "Behold the growing light of Nim" inscription.
Photo copyright © Rex Gilroy 2017.*



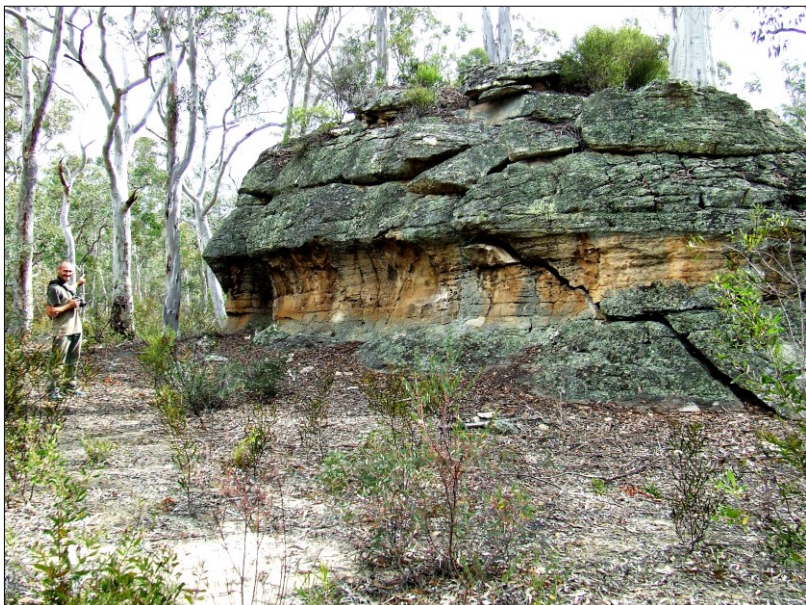
The votive offering stone reading "Nim shines over the land". Photo copyright © Rex Gilroy 2017.



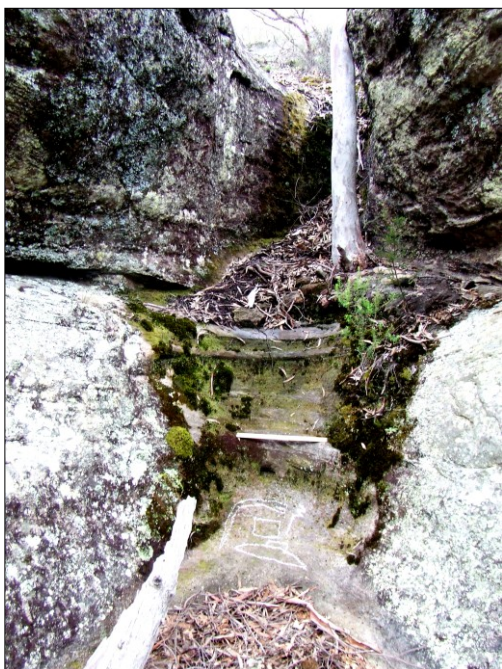
*The I-na Eagle of the Sun image.
Photo copyright © Rex Gilroy 2017.*



The votive offering stone reading "Nim shines over the land". Photo copyright © Rex Gilroy 2017.



*The Moon-Goddess inscribed slab was found by Rex beneath this rock formation.
Photo copyright © Rex Gilroy 2017.*



*The libation gutter with inscription beneath.
Photo copyright © Rex Gilroy 2017.*



*Close view of the inscription, which features the Moon-Serpent, Ra-na.
Photo copyright © Rex Gilroy 2017.*



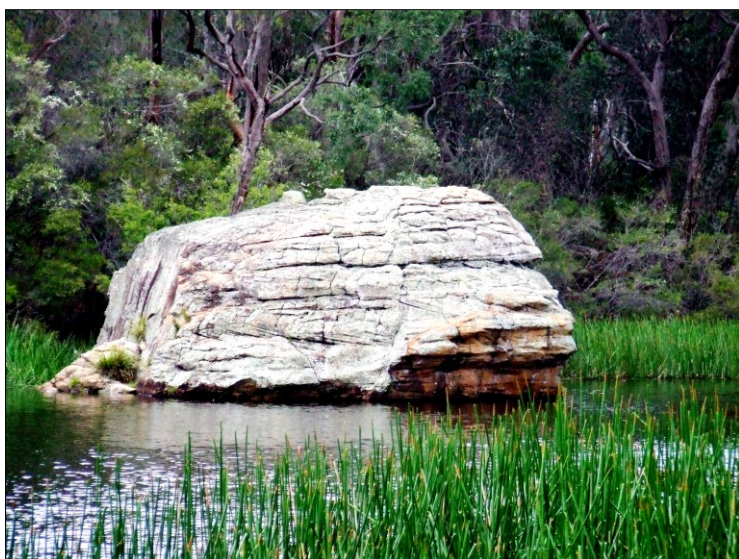
*Rex inspecting the inscription.
Photo copyright © Rex Gilroy 2017.*



This slab image of Ara bears a Moon disc on her forehead. Photo copyright © Rex Gilroy 2017.



The inscription on the stone's back reads: "An offering to the Goddess at the Temple of the Light of Ara". Photo copyright © Rex Gilroy 2017.



The large deteriorated image of Ara, surrounded by swamp. The image must be tens of thousands of years old. Photo copyright © Rex Gilroy 2017.



Another interesting head shaped rock find by Graham Merrick and Phil Whittaker in the Wollemi Photo copyright © Rex Gilroy 2017.



The exhausted but happy explorers stop for a rest in a park on the way home. Photo copyright © Rex Gilroy 2017.

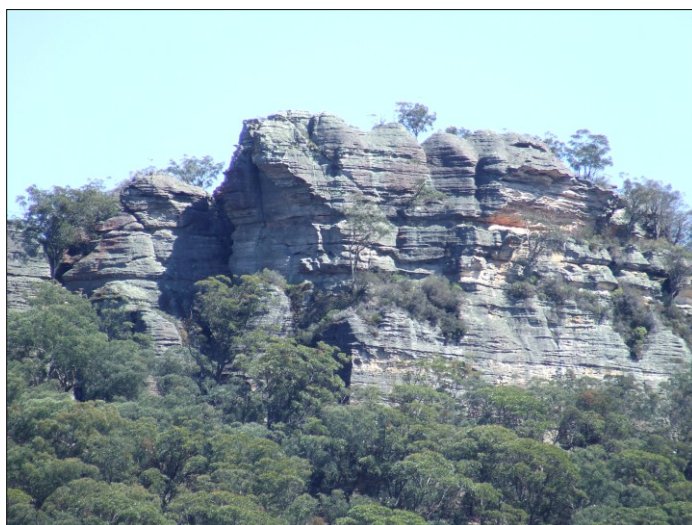


This mighty image of Ara, featured in last months “Mysterious Australia” newsletter, overlooks her domain, a once widely-scattered landscape of settlements forming a great colony of Uruans who dedicated the settlement to her.

Photo copyright © Rex Gilroy 2017.

Nearby upon another cliff is this deteriorated image of a head of I-na, the ‘Eagle of the Sun’. Plans to attempt to climb this formation to reach the top of the heads are being made, for it is possible that temple remains may exist there.

Photo copyright © Rex Gilroy 2017.



SEARCHING FOR THE ‘IMPOSSIBLE’ – LIVING DINOSAURS ON THE BLUE MOUNTAINS, NSW.

by Dr [h.c.] Rex Gilroy PhD.
Copyright © Rex Gilroy 2017.

Did primitive human ancestors share Australia with living Dinosaurs, which conservative scientists believe became extinct at the end of the Cretaceous Period [66-144 million years ago]? Tantalising evidence suggests some of these reptilian nightmares still exist.

Readers will recall earlier articles of mine in this newsletter, not forgetting my lengthy writings on the ‘Living Dinosaurs’ subject in the Gilroys’ books “Out of the Dreamtime – The Search for Australasia’s Unknown Animals” [URU Publications 2006], and “Burrunjor! The Search for Australia’s Living Tyrannosaurus” [URU Publications 2011]. Expect more!

The fact is that our Aborigines were familiar with the existence, in remote corners of Australia, of giant reptiles, long before the arrival of British civilisation. Around Australia are ancient rock art sites supporting this contention, for they show crude, although unmistakable images of both Theropod and sauropod-type dinosaurs! Of these lately much interest has been centred upon Burrunjor, the monstrous Theropod monster which many claim could be a form of Australian Tyrannosaurus, or even an Iguanodon. Burrunjor fills the nightmares of Aborigines, and not a few whites, over a broad area of northern Australia. That ‘he’ still survives the Gilroys can vouch, for together with our Webmaster, Greg Foster, who took part in our March 2011 expedition to northern South Australia and Central Australia, in search of evidence of these reptilian

monsters. The expedition resulted in the lucky discovery of a number of large three-toed Theropod tracks of a Burrenjor, and also those of smaller Coelurosaur-type tracks only a day old [see 'Burrenjor- Australia's Living Tyrannosaurus]. It is certain to us that people who claim to have seen a Burrenjor, or some other 'extinct' dinosaur species in the Australian interior, may not be lying, nor imagining what they claim to have seen!

Burrenjor had an eastern Australian relative known to the tribespeople of the far south coastal mountain ranges as Murra-Murri, who also had Tyrannosaurid physical features, or else was a similar carnivore species. His movements, say the Aborigines, extended to the vast Blue Mountains ranges, where the species was called Murrin-Mugga, or 'Man-Snake' because it walked about on its hind legs. Tribespeople said it was a powerful beast, with short forearms and a large fearsome head. The monster ate Aborigines by tearing them apart with his large pointed teeth set in powerful jaws.

Murrin-Mugga was not alone, for it appears there was a much smaller bipedal Reptile of which little information survives; and then there was the Lata, a long-necked sauropod-like beast whose legs were so powerful the loud pounding of their movements could be heard from a long way away it is said.

Former tribespeople of the Burragorang–Wollondilly country who were still alive in late 19th century–early 1900s said to early European settlers of the valleys, that the Lata still lived in the forests, and this species' name was spoken in the Jenolan Range and on the fringe of the Kanangra wilderness, where tribespeople claimed they roamed the plateau itself.

The name 'Lata' however was not Aboriginal but Uruan and meant "Lightning Feet" and Aborigines as far north as Singleton used the name for the long-necked sauropod-like monsters that they claimed, had inhabited the Wollemi swamplands since the 'Dreaming'. One region of the Wollemi was nicknamed "Dinosaur Swamplands" by locals of the Putty district around 1900. Early farmers of the fringe country beyond the Wollemi about this time claimed a "huge long-necked reptile" had been seen by wild pig hunters, Lata had begun to get well known...

Back in 1953, according to Mr Tom Askey, who this author interviewed at Gympie, Queensland, he was exploring the 'dinosaur swamplands', which he had already been informed by a local bushman, was a region of remote, eerie reed-choked lakes and swamps located far from any settlement.

"Curiosity led me to try and visit the area, which was no easy task. Eventually after a couple of attempts, one day I found one extensive swamp, and following its shoreline I found it eventually led into another swamp. As it was winter I wasn't worried about snakes. Then I came across a muddy area showing a lot of disturbance with reeds crushed into it, and the trail of something big having entered the swamp via here after it had emerged from surrounding dense forest.

Then, looking across the swamp I saw something incredible, what appeared to be a big reptile-like beast, wading through the dense reeds in several feet of water, some few hundred feet away to the south. It reminded me of pictures in books on dinosaurs depicting the Brontosaurus.

"With its long neck and a head about the size of two footballs, without being able to see the legs and tail, from the rump to the head I reckoned the beast was about 50 feet [15metres] in length. At this point I left the area as quick as I could wondering how many others might be inhabiting the area. I never returned".

Mr Askey, who was 20 years old at the time, told some people of his experience, but his story was largely dismissed by them. Even so, in the early 1960s campers found a large, wide 'trackway', made by some enormous beast who left large indistinct feet impressions deeply embedded in swamp mud.

Few people ever visit this region. However, during October 1982, I led a search of the area with the late Don Boyd [at the time editor of Strange Phenomena Magazine], Geoff Holland [also since deceased and other friends]. Following directions obtained from Tom Askey, I was able to re-locate the area where he claimed to have seen the sauropod creature. We took photos and explored about the shoreline, then penetrated deeper into the forest country. Here we came upon two recently-made 'paths' of crushed foliage that extended through the swamp for a great distance.

However, we all felt uneasy after a while of exploring deeper into the forestland. It was undoubtedly a very eerie place and we still had to re-trace our steps back to the roadside where Don had left his car. We turned back, planning a return search later, but it never happened. Instead, Heather and I have made visits to the area, which is also a habitat of giant monitor lizards.

Early 1900s settlers who penetrated into the western end of the vast Burratorang Valley [much of which lies beneath Warragamba Dam's backwaters], left tales of having found the tracks of some large form of quadruped giant crossing their pastures. One old story from about 1898 told of a family waking one morning to find huge feet and tail impressions across their back yard garden and ploughed field. Where the monster had entered and left the property the fences had been trampled!

Being vegetarians these 'Lata' were said to create considerable disturbance among dense foliage, as they ate through branches of leaves and shrubs. The pioneers do not appear to have attempted to shoot any of these reptilian giants, whose average length was said to be up to 65-70 feet from head to tail tip [ie 19.8–21.33 metres]. No doubt they feared retaliation from these thick-hided monsters, who in any case seemed to ignore humans.

Why scientists of the day did not bother to take certain reports seriously, or investigate footprints and other evidence of these reptiles is strange, when there was some support for stories of other reptilian giants claimed seen elsewhere in the world. The Lata were just allowed to vanish gradually in their remote habitats.

There are mountainside 'pathways' where these giants trampled the scrub so much in their movements on the Kanangra Plateau that nothing much grows along these old 'dinosaur trails'. They can still be found but have not felt the feet of a giant plantigrade reptile since the 1940s at least. Meanwhile the author has in the last several years uncovered at least two, apparently recent 'dinosaur trackways' in the Kanangra depths.

And, there still remain vast tracts of Blue Mountains forest country, so dense and Impenetrable to humans, that no one has yet been able to explore these regions on foot, even the most dedicated campers. In these regions it is not impossible that some Lata still survive.

Yet what is the Lata, its description by early Aborigines and European settlers describes some form of sauropod. We might theorise that the Lata reptiles are surviving Rhoosaurus brownie, a species which in fact arose in Jurassic times about 180 million years ago. Who can say for certain, as Australia's dinosaur fossil record remains at present somewhat sparse. There is however, every likelihood that more than one new sauropod form will eventually be unearthed here to add to the list of Australian species.

The Gilroys are open-minded on the proposition of still-living dinosaurs, and in 2018 will release a new book on the subject. Only physical proof will ever convince scientists of the continued existence of one species or another of dinosaur. I for one, [unlike the 'desk professors' of this world], do not sit back chairs wondering if some rare, or unknown species survives in our vast Australian bush – I go in search of it!

-0-



Tyrannosaurus rex. Best known from fossil finds from North America, also roamed Asia. Burratorang/Murra-Murri is argued by the authors to be an Australian sub-species still unknown to science. Fossil tracks of Tyrannosaurid reptiles are known from the Sydney-Blue Mountains areas and elsewhere across Australia.

Illustration courtesy 'Dinosaurs – An Illustrated History' by Edwin H Colbert, Maplewood, N.J. 1983.



This sandstone rock contains engraved images of Murra-Murri on both sides, carved by an Uruan artist at least 10,000 years ago. The Uru, who arose in Australia from the first modern humans [Homo sapiens], have left megalithic monuments throughout the Australian continent dating back to pre-Aboriginal times. They were obviously familiar with the Murra-Murri/Burrunjor terror reptiles. The stone measures 24cm long by 12.5cm wide and 7.5cm deep. This image depicts a standing Murra-Murri. The relic was found in bushland near Katoomba, NSW by Rex Gilroy in January 2011. Photo copyright © Rex Gilroy 2017.



The reverse side of the 'Murra-Murri' stone shows a Tyrannosaurus-like image with body and tail in horizontal position as if in a running motion. Note the large head and small forelimbs. This image seems more accurate than the other in head structure. These engravings imply that Tyrannosaurid monsters were roaming the Katoomba scrub during late Pleistocene Period times! Photo copyright © Rex Gilroy 2017.



On a Central Australian expedition in March 2011, the Gilroys, with webmaster & field assistant Greg Foster, while on the Stuart Highway in South Australia, and not far south of the Northern Territory border, stopped to explore roadside mulga scrub to search for animal tracks. To the surprise of all, they came across larger-than-emu size three-toed tracks in the red soil. They were obvious juvenile Burrunjor tracks at least a day old and part of a small herd. Casts were done of a number of impressions, and it soon became clear that perhaps hundreds more lay embedded about the area. They had stumbled upon a dinosaur [ie theropod] gathering area! Appointments in Central Australia soon forced them to move on. Photo copyright © Rex Gilroy 2017.



*Rex Gilroy and Greg Foster wait for the casts to dry. The small squares of cardboard at the base of the toes made it easy to dismantle the casts afterwards for easier packing.
Photo copyright © Rex Gilroy 2017.*



*The set of three smaller Burrunjor tracks. The reptile was heading west. The tracks measured 50cm long by 35cm wide across the outstretched outer toes.
Photo copyright © Rex Gilroy 2017.*



*The middle specimen of the three tracks chosen for casting had yet to be cast when Greg Foster took this photo. It is obvious to these living dinosaur investigators that these reptiles from a past age regularly emerge through a probable permanent 'time-window'.
Photo copyright © Greg Foster 2017.*



*Heather Gilroy observing the stride distance between each of the three tracks cast.
Photo copyright © Greg Foster 2017.*



*The best track of the three cast. All measured 50cm in length by 35cm width across the toes, by up to 6cm in depth.
Photo copyright © Greg Foster 2017.*



*Three of the large number of theropod tracks cast at the location in from the Stuart Highway. This area remains an eerie locale, where it appears that truck drivers and other motorists have claimed to have seen reptilian monsters over the years ie Burrunjor.
Photo copyright © Rex Gilroy 2017.*



Rex Gilroy returning to the car with the casting equipment. Even as he did so, he found himself walking through numbers of small Coelurosaur-type tracks mixed among larger Theropod i impressions. It was obvious that the area is frequented by creatures claimed by scientists to have died out 65 million years ago! Photo copyright © Greg Foster 2017.



*Some distance further along the highway the Gilroys stopped their vehicle when Rex spotted a huge three-toed impression in a roadside sandy embankment. Note ruler beside track impression bottom left of picture.
Photo copyright © Rex Gilroy 2017.*



*Apart from the Burrunjor tracks there were also numbers of apparent Coelurosaur impressions. These tracks were found on a south to north direction and were associated with Burrunjor footprints moving in the direction of the Stuart Highway.
Photo copyright © Rex Gilroy 2017.*



*The track measured 1 metre long by 66cm wide across the outer toes and 27cm across the heel by 9cm deep.
Photo copyright © Rex Gilroy 2017.*



*Heather Gilroy was amazed when shown the track by Rex. There were further tracks of the monster over the rim, indistinct amid grass, accompanied by more Coelurosaur impressions and the kangaroos they appear to have been pursuing.
Photo copyright © Rex Gilroy 2017.*



*While investigating the Ewaninga area south of Alice Springs, Rex Gilroy stumbled upon this carving of a Burrunjor 47cm tall by 65cm wide.
Photo copyright © Rex Gilroy 2017.*

*A close view of the image. As with every other site where Burrunjor carvings are found, the region is known in Aboriginal tradition to be a haunt of these monsters.
Photo copyright © Rex Gilroy 2017.*





*A close view of the carving, depicting a running Burrunjor. It measures 29cm tall by 23cm wide.
Photo copyright © Rex Gilroy 2017.*

This Burrunjor image was one of two, the one above having crumbled away long ago, leaving only part of a leg. The stone is 1.26 metres tall by 1.2 metres wide and 1.2 metres deep.

Photo copyright © Rex Gilroy 2017.

*A Coelurosaur. These human-height bipedal reptiles grew to 1 metre in length.
Sketch copyright © Rex Gilroy 2017.*



Sketch copyright © Rex Gilroy 2017.



Sketch copyright © Rex Gilroy 2017.

Tyrannosaurus rex, the largest [12m length] carnivorous dinosaur to walk the earth in the Cretaceous period, around 70-65 million years ago. Tyrannosaurid fossils are known from Australia, suggesting this species reached this landmass. Yet today Aboriginal people over a wide area of our far north, from throughout the Gulf Country of the Northern Territory, and Queensland, and for some distance southward, firmly believe in the existence of a huge reptile of Tyrannosaurian proportions, called by them 'Burrunjor'. Burrunjor monsters have been claimed seen by Aborigines and Europeans in recent times, in remote regions of the Far North.

Sketch copyright © Rex Gilroy 2017.



*The fossilised Tyrannosaurid footprint discovered by Rex Gilroy in Sydney's Kuringai National Park on Wednesday 5th May, 2010. When it was first discovered filled with leaf litter.
Photo copyright © Rex Gilroy 2017.*



*The footprint, cleared of the leaf litter.
Photo copyright © Rex Gilroy 2017.*



*Rex, thrilled with his 'big' discovery!
Photo copyright © Rex Gilroy 2011.*



*Greg points to the distorted left side of the footprint, which had been squashed about in mud when this site was part of an ancient swampland. The impression may have been covered by volcanic ash which would have helped to preserve it. Any other tracks left by the dinosaur have worn away long ago.
Photo copyright © Rex Gilroy 2017.*



*Greg Foster examining the huge fossil impression.
Photo copyright © Rex Gilroy 2017.*



*Rex Gilroy discovered this 40cm long by 60cm wide bipedal dinosaur track in January 2002 in a Cretaceous Period [66-144 million years BP] mudstone shoal outside Wentworth Falls in the Blue Mountains. The track had originally been covered by volcanic ash from a nearby eruption, which had baked and preserved it.
Photo copyright © Rex Gilroy 2017.*



*A closer look at the Wentworth Falls, NSW bipedal dinosaur fossil track. It resembles the smallest of the two Kanangra Boyd wilderness specimens.
Photo copyright © Rex Gilroy 2017.*



Closer view of the sandstone shoal images. The ‘Tyrannosaurian’ figures are thought to depict the “Wathuk muggadung” or “erect lizard”, and the giant lizard images those of “Mungoon Galli” [ie Megalania prisca]; names by which the ancient tribespeople knew the fearsome reptilian ‘bunyips’ of the Wollemi Wilderness in the long-ago ‘Dreamtime’.

Photo copyright © Rex Gilroy 2017.



The vertical rockface faded carvings of the “Wathuk muggadung”, or “erect lizard” and “Mungoon Galli” [ie Megalania prisca], carved by an Uruan artist thousands of years ago, describing two forms of reptilian monsters that the early Aborigines of the Blue Mountains also believed inhabited the Wollemi Wilderness [and no doubt elsewhere].

Photo copyright © Rex Gilroy 2017.



A large ironstone slab containing the fossilised three-toed foot impression of a bipedal dinosaur, discovered on June 21st 1971 by Rex Gilroy on the side of Mt York Road, outside Mt Victoria, Blue Mountains NSW. After wrapping the fossil in a chaff bag tied with rope, he dragged it along the road for 2km to his then Mt York Natural History Museum. Photo copyright © Rex Gilroy 2017.

Sauropods wade in a primordial swampland 144 million years ago. Fossil evidence is showing such scenes were commonplace on what became the Blue Mountains. Illustration courtesy 'Dinosaurs – An Illustrated History' by Edwin H Colbert, Maplewood, N.J. 1983.



*On Friday 30th September on a cliff top, Rex Gilroy stumbled upon this 40cm long by 37cm wide larger Sauropod fossil track. It has tentatively been given the species name *Montanosaurus Gilroyii* [Mountain saurian]. Photo copyright © Rex Gilroy 2017.*



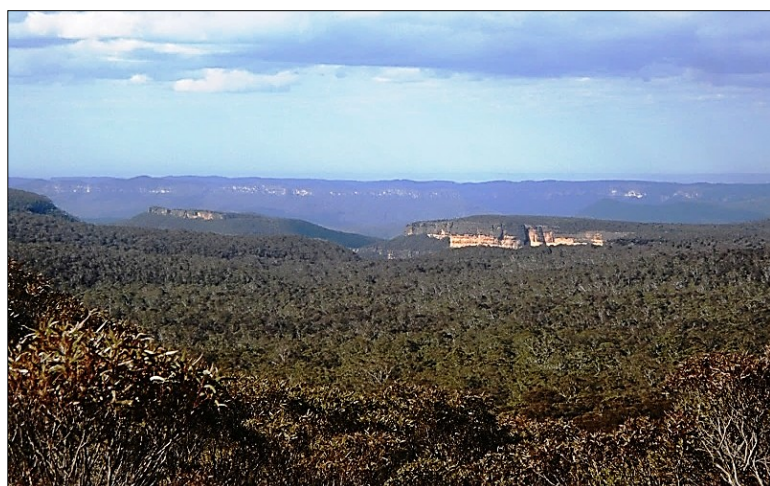
This small stone engraving, done by an Uruan artist thousands of years ago, was recovered by Rex Gilroy on Sunday 11th January 2009 at a Wentworth Falls, NSW bushland location. Measuring 13cm tall by 12cm wide and 6.5cm deep, it bears a sauropod-like image with the Uruan glyphs for 'Lata', the name of a giant quadruped beast that in their folklore [and later Aboriginal] roamed the former Burratorang Valley Swamplands. Photo copyright © Rex Gilroy 2017.



On Monday 3rd October this largest of the Sauropod tracks so far discovered in the Blackheath area, was found by Rex while he was hiking on a fire trail. It measures 50cm long by 45cm wide across the toes and 6cm deep. Photo copyright © Rex Gilroy 2017.



Andy sits alongside a large but deteriorated Sauropod track found on Saturday 8th October on the clifftop containing the second largest Sauropod impression of Friday 30th September. This monstrous indistinct track measures 90cm long by 60cm wide across the toes area and 41cm wide across the heel. Photo copyright © Rex Gilroy 2017.



The vast Kanangra Boyd wilderness, borders the Burragorang Valley. There is evidence that this region also has long been a 'Time-Window' for reptilian monsters from the 'Age of Dinosaurs', including the giant monitor lizard, Megalania prisca Owen, claimed extinct since the Pleistocene period. Photo copyright © Rex Gilroy 2017.

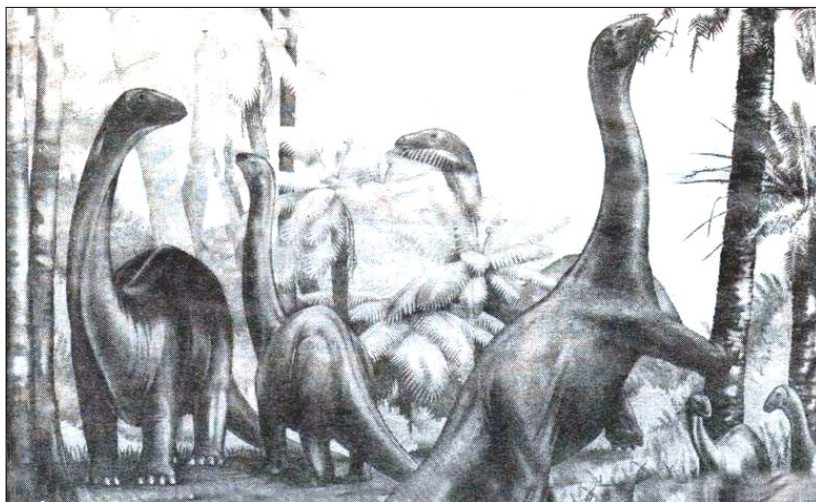
In many remote and almost inaccessible parts of the Kanangra wilderness, campers have stumbled upon often lengthy, wide 'pathways' of crushed foliage, as if made by creatures of immense size. Some 'pathways' appear to have been used more than once, so that they can be easily followed even after a few years, particularly those 'pathways' where the shrubbery does not grow back. This 'pathway', found by Rex Gilroy on Saturday August 6th 2011 began, and ended abruptly after a couple of hundred metres. At least a couple of years old, new growth has only recently begun to regrow. It gives the impression of a large creature having suddenly emerged from a 'Time Window' to tramp its way through the forest for a distance before re-entering its own [past] time. Photo copyright © Rex Gilroy 2017.





*The eerie wilderness of the
Wollemi.
Photo copyright © Rex Gilroy
2017.*

*An artist's depiction of four Rhoetosaurus brownie foraging in a Queensland Jurassic forest 180 million years ago. These sauropods reached 12 metres or more in length, with a body length of around 20 tonnes. Similar saurian giants have been claimed to inhabit the vast Wollemi Wilderness north-west of Sydney.
Photo Daily Telegraph, Saturday 30th November 1985.*



*Dinosaur Swamplands, deep in
the Wollemi Wilderness, north-
west of Sydney NSW, so named -
because of the mysterious
reptilian giants said to live there,
both in Aboriginal folklore and
European encounter claims.
Photo copyright © Rex Gilroy
2017.*

*During October 1982, Rex Gilroy led an expedition deep into the 'dinosaur swamplands', to investigate claims of a form of sauropod-like reptile inhabiting the remote, eerie reed-choked lakes and swamps of the region. He had first learnt of this mystery from a Gympie, Queensland resident in 1975, who related a personal sighting of one of these huge reptiles while exploring the area in 1953. The creature was described by the man as a 'Brontosaurus' wading among tall reeds, about 50ft [15m] from head to back of what body was visible above the water! He left the area in haste.
Photo copyright © Rex Gilroy 2017.*





The expedition led by Rex Gilroy included the late Don Boyd [far left] and Geoff Holland [second from right], both seen here studying a map prior to commencing the long trek deep into the Wollemi interior. Photo copyright © Rex Gilroy 2017.

*The expedition found it hard going the deeper they penetrated into the mountains.
Photo copyright © Rex Gilroy 2017.*



*Rex's four companions investigating the edge of a remote lake in search of footprints that might have been left by one of the 'Dinosaur Swampland' mystery reptilian giants.
Photo copyright © Rex Gilroy 2017.*

*The expedition reached this overgrown swamp many kilometres inland from base-camp where recently-made 'paths' of crushed foliage through the swamp, suggested that one or two of these mystery reptiles was somewhere in the jungle west of the swamp. After investigating the area further the group turned back.
Photo copyright © Rex Gilroy 2017.*





*Rex Gilroy scanning an extensive tract of Wollemi “Dinosaur swamplands”, during the Gilroys 2003 investigations.
Photo copyright © Rex Gilroy 2017.*

*The Gilroys discovered this reed-choked creek during August 2001, while carrying out a search deep in the swamplands. Since then it has been the scene of repeated discoveries of giant reptile activity.
Photo copyright © Rex Gilroy 2017.*



*Heather Gilroy making a video record of the August 2003 search in Dinosaur Swamplands.
Photo copyright © Rex Gilroy 2017.*

*Swampy grassland deep within the eerie ‘Dinosaur Swamplands’ where mysterious ‘pathways’ made by large beasts have been found.
Photo copyright © Rex Gilroy 2017.*





*On Friday 10th June, 2011 Rex Gilroy made a photographic visit to a particular area of 'Dinosaur Swamplands'. While attempting to make a short cut back to the car [at a Putty Road location where Heather was waiting for him], he came across a lengthy 'pathway' made by some huge beast that extended across a nearby swamp, seen here. The 'pathway' can be seen along the bottom of picture.
Photo copyright © Rex Gilroy 2017.*

UPDATE ON AUSTRALIA'S UNKNOWN MYSTERY 'BIG CATS'.

by Dr [h.c.] Rex Gilroy PhD.
Copyright © Rex Gilroy 2017.

While many enthusiastic researchers continue to investigate sightings reports of the elusive 'Australian Panther', cast its paw impressions and search for hair samples, there still remain other mysterious forms of largely unknown so-called 'Big Cats' out there in the Australian wilds that continue to go unnoticed.

The reason for this situation is that, aside from many Cryptozoologists being fixated on the 'panther', They often know next to nothing about other, perhaps rarer animals which, being secretive in their movements, have been able to avoid human detection. They may leave their paw prints and little else.

In my 60 years of investigation of mystery animals, I have always been drawn to the elusive and 'unknown' forms, which like shadows haunt our forests, unseen and silent but for the snap of a twig which might betray their presence to the alert Investigator.

In order to survive in the Australian bush every animal must be silent to avoid becoming the prey of another.

The so-called 'Australian Panther' is the best known of our elusive 'Big Cats', and yet its paw prints alone betray Marsupial paw structure rather than felid, and the fact that old-time bushmen, and others in later times have seen apparent females with pouched young settles the argument of its true identity. Thus we are dealing with a large Marsupial Cat. Size reports from eyewitnesses vary, but are generally 1.53 to 1.83 metres in length head to tail. Yet there is a larger, giant-size 'Australian Panther' who leaves behind paw prints identical in shape although far larger than its smaller cousin.

The rugged Blue Mountains are home to both species of 'panther'. The Gilroys have uncovered the tracks of both species in the Blackheath, Newnes and Kanangra Boyd National Park wilderness, which are also haunts of the 'extinct' Thylacine, and they certainly haunt the forests of the vast Wollemi. The Giant Panther form reaches 2 metres and more in length, leaving tracks up to 26cm in width by 23cm in length. Both creatures have in the past been responsible for stock losses in the Kanimbla and Megalong Valleys, and in the Burratorang-Wollondilly Valleys long before the flooding of the Burratorang for the dam construction brought European settlement there to an end in the 1950s. South of the Wollondilly country lies Canyonleigh, and further accounts of stock raids by both forms of these Australian 'panthers'.

In the light of the foregoing evidence for a Marsupial, rather than felid identification, the 'Australian Panther' of either size should have been identified As marsupials long ago by scientists as well as sensible amateur Cryptozoologists, but they did not, and the creatures were instead identified as 'escaped circus or zoo animals', feral cats, or World War Two American military mascots illegally brought to Australia and released into the bush when the troops departed at war's end!

Meanwhile some researchers argue on various grounds that another large meat-eater, the ‘extinct’ Marsupial Lion, *Thylacoleo carnifex* Owen might still exist, Rex and Heather Gilroy remain open-minded on the issue. There have been many stock losses around Australia and the culprits have avoided being shot, escaping into the depths of the dense Australian bush.

Regardless of this marsupial carnivore’s possible continued existence somewhere in the vast Australian bush, there were at least several marsupial cat species living contemporaneous with this large predator, and the fact that there are as many so-called ‘Big Cats’ roaming our wilderness today, suggests that these are surely living offshoots of the fossil forms.

The first fossil evidence of *Thylacoleo* was a peculiar long, ridged tooth uncovered in Wellington caves, New South Wales in the 1830s. This was followed by fragments of a skull in Victoria in the 1840s, which was enough for scientists of the time to conclude that a large feline-like marsupial carnivore had once existed on this continent.

Then in the 1950s more bones of this animal were unearthed in South Australia and New South Wales. In Western Australia remains of *Thylacoleo* have more recently come from the Balladonia district, in Madura Cave on the Roe Plain, including caves on the Nullarbor, in Mammoth Cave and also Devil’s Lair. Caves beneath the Nullarbor have produced eight complete or almost complete skeletons. There is now evidence that specimens from Western Australia are somewhat smaller than those in the east of the continent.

The body of *Thylacoleo* reached more than 1.5 metres in length. It had a large head with a short, wide heavily built skull. Its broad snout had wide, flaring bony arches on either side and its eyes were forward-looking like a cat. It possessed powerful jaw muscles, the neck being thick and muscular. The average body length weight of a *Thylacoleo* would have been about 150 kilograms.

The forelimbs were long and powerful, the large fore paws possessing ferocious claws used for slashing and ripping their prey. The hind paws possessed semi-opposable toes used for climbing trees. Their strong limbs allowed these carnivores to pursue their prey.

The origins of *Thylacoleo* are little known, although it may have evolved from an earlier form called *Wakaleo*, who lived some 10 million years ago in the Miocene period. Of living marsupial species, *Thylacoleo* is most closely related to the wombat.

The Blue Mountains wilderness is home to another so-called ‘Big Cat’, or rather Marsupial carnivore, the mysterious “Blue Mountains Lion”. It possesses a massive front pair of paws measuring as much as 21.5 cm long by 22.5cm wide with large clawed toes, and the rear of the paw pad displays a three lobe formation typical of marsupials. The monster’s rear pair of paws measure around 17.5cm long by 18cm wide across the outstretched claws. The animal’s legs are muscular and the entire body of powerful build, with a dog-yet-cat like head of large enough size to house its great powerful jaws and teeth, particularly two long, sharp ‘sabre’ [canine] teeth, and there is a ‘mane’ of long neck hair and pricked ears. The species could reach between 1.8 and 2 metres body length from head to tail.

There is in fact a smaller version of the ‘lion’ roaming the Blue Mountains. In 1980 I made a rough sketch of what this smaller ‘Blue Mountains Lion’ might look like. At the time I was ridiculed by some scientists. Since then, with the discovery of incomplete bone remains of a ‘sabre-toothed’ marsupial cat in the Riversleigh fossil deposits of Queensland, I have been vindicated!

In March 2005 I uncovered a number of large paw prints of the ‘Blue Mountains Lion’ out on Narrow Neck Plateau, which Heather and I made casts of, including a large round cast of a mud patch in which tracks were embedded. About this time bushwalkers had claimed to have made sightings of the ‘Lion’ in scrub out on the ‘Neck’.

The ‘Blue Mountains Lion’ has left its paw impressions as far south as the ACT, in mountainous areas of the Central West, and also into the northern New South Wales forests. Until fossil remains are forthcoming it will remain yet another mystery of the Australian bush ignored by science.

Those readers interested in Australia’s mystery marsupials are directed to the Gilroy’s book: “Big Cats of the Australian Wilderness” [URU Publications 2011], which contains a mass of sightings reports and other information valuable to anyone contemplating joining the search for evidence of these mysterious and ‘unknown’ creatures.

There is one ‘Big Cat’, a non-marsupial species and one overlooked by Australian Cryptozoologists. These animals have been claimed seen in various parts of Western Australia, the Gulf Country, and north Queensland, particularly on the Atherton Tableland to Cape York. There are sightings claims sent to me from areas in South Australia and even Central Western New South Wales.

These mystery creatures are carnivorous ‘sabre-toothed’ and strong in appearance, with long haired lion-like manes, and standing upon all fours they can reach half the height of a man and are at least 1.75 metres in length from head to tail.

Paw prints of these animals are unlike any Australian marsupial and match fossil examples of the Homotherium. This species was a definite felid. Its distribution is based upon fossil remains and it extended from Africa [Ethiopia], Asia [China and Java], Europe [United Kingdom] and North America.

Homotherium lived during the Early to Late Pleistocene Period, at a time when Australia and what is today island south-east Asia was a all part of a continuous land shelf that linked us to mainland Asia. Thus, as Homotherium reached Java there was nothing to have prevented these creatures from reaching northern Australia! Therefore, the future discovery of Homotherium remains in the Australian fossil record can be favourably considered.

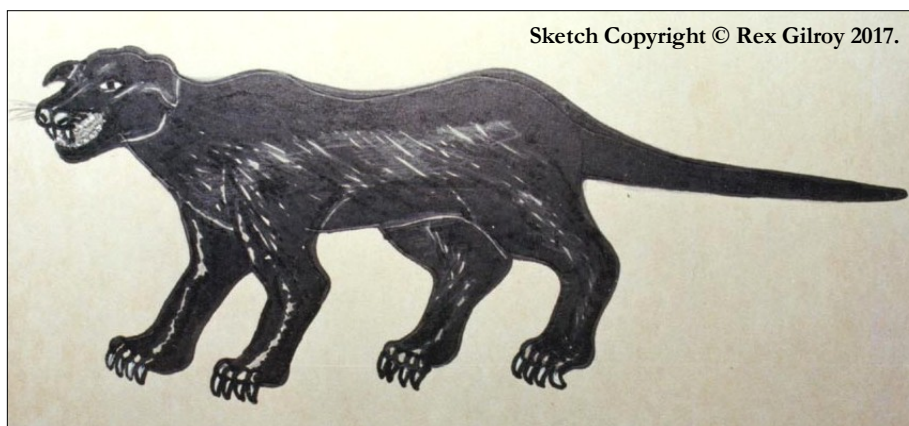
Our Northam, Western Australia–based scientific colleague, Trevor Horsefield, has gathered sightings reports of Homotherium-type ‘Big Cats’ from among people living in the Gulf Country. One report obtained by Trevor concerns a group of several of these Homotherium-type ‘Big Cats’ seen hunting together in late 2014, having killed up to 30 kangaroos in an attack carried out upon a large flock in an open area, somewhere west of the base of Cape York Peninsular. Some were said to have been up to about 1.83 metres in length head to tail.

A fossil paw print of a possible Homotherium dating around half a million years old, was found by Heather and I at Mesa Verde, Colorado, on Tuesday 21st October 2014, during our first American field expedition. Measuring 13cm width across the five toes by 29cm length from tip of mid-toe to rear of back pad [itself 10cm length by 13.8cm width], the massive paw impression is larger than our “Giant Panther”, which measures 16cm in length from tip of mid-toe to rear of back pad by 22cm width across the four toes.

These then are Australia’s ‘Big Cats’, only one of which, just described, is a felid!

We ask ourselves, what further secrets will the Australian bush give up? It is certain that the final chapter on Australia’s mystery ‘Big Cats’ has yet to be written!

-0-



The “Australian Panther”, this sketch by Rex Gilroy, based upon eyewitness descriptions shows the animal to possess dog-like head features. These marsupial carnivores are a probable relating species of the ‘extinct’ Marsupial Lion, Thylacoleo carnifex’.

Sketch copyright ©Rex Gilroy 2017.



On Tuesday 19th October 1993 Mr Peter Thomas phoned the Gilroys [then living at Kentucky, NSW] to say that he had found 'panther' tracks near his bushland home in the Bendemeer area. The following day he visited the Gilroys with a plaster cast made from one of the tracks. It measured 12cm long by 11cm wide across the toes. It matches others from Kangaroo Valley, Kenthurst and the Blue Mountains NSW.

Photo copyright t© Rex Gilroy 2017.



The vast Capertee Valley, north of Lithgow, where early shale miners and timber getters of the 19th century are said to have had many experiences with the "Big Cats". Locals have more recent stories to tell. Photo copyright © Rex Gilroy 2017.



On Thursday 10th April 2005, Rex and Heather Gilroy together with Greg Foster, uncovered a 'trackway' of day-old 'panther' paw prints on a dry sandy bush track at Kenthurst, NSW. The paw prints seen here show an animal moving south to north.

Photo copyright © Rex Gilroy 2017.



Detail photo of one of the paw prints. Photo copyright © Rex Gilroy 2017.



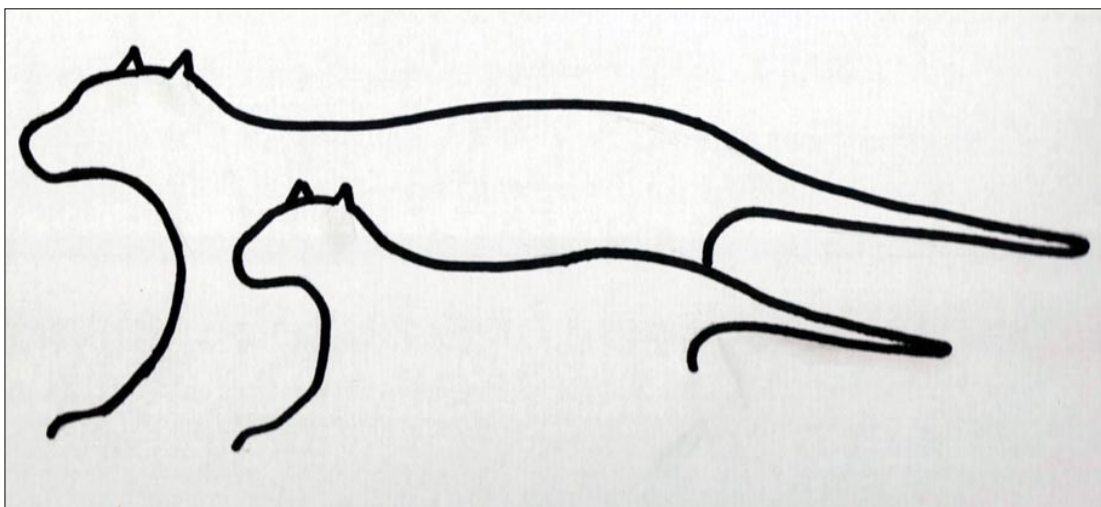
*Rex Gilroy holds plaster casts of two of the best preserved paw prints from the Kenthurst bush track site, discovered by him and Greg Foster.
Photo copyright © Rex Gilroy 2017.*



*The paw prints measured 10cm length by 8.3cm width. Note characteristic three lobed shaped at the rear of the pad. The paw impression is that of a young creature.
Photo copyright © Rex Gilroy 2017.*



*Heather Gilroy holding a cast of one of the giant-size “Australian Panther” paw prints, discovered by Rex Gilroy on Sunday 2nd January 2005 in Newnes State Forest, NSW. These giant marsupial cats roam a wide area of the Blue Mountains.
Photo copyright © Rex Gilroy 2017.*



*Size comparison between the giant form of ‘Australian Panther’ [ie giant marsupial cat] and its smaller, better known form. The giant form reaches 2m and more in length, leaving tracks up to 26cm in width by 23cm in length!
Sketch copyright © Rex Gilroy 2017.*



Size comparison between the large paw impression cast of a giant form of the 'Australian Panther' from Newnes State Forest and an average size 'panther' paw cast from Kenthurst in Sydney's north-west.

The Giant Panther appears to be confined to the vast mountainous forestlands and valleys of the Greater Blue Mountains National Park, from where these creatures occasionally roam into the fringe areas beyond the mountains. They have not been reported from elsewhere in Australia and therefore appear to be a locally-evolved form of large marsupial carnivore. Photo copyright © Rex Gilroy 2017.



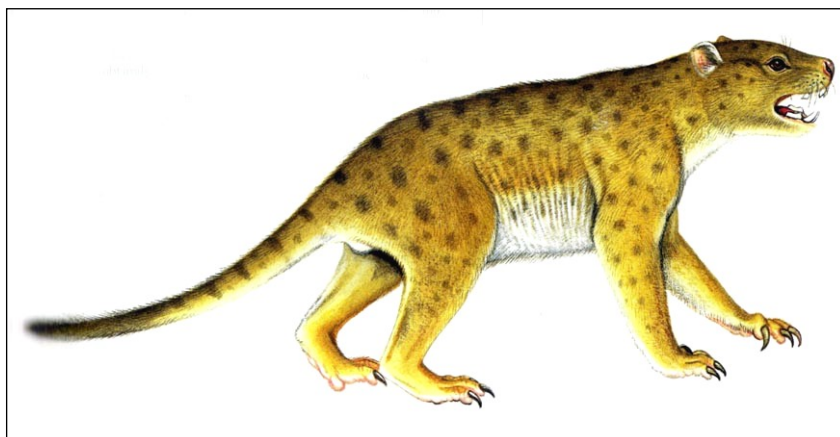
Reconstructed skeleton of Thylacoleo carnifex by John Long. Wikipedia image.



The Marsupial Lion, Thylacoleo carnifex. Opinion varies among Cryptozoologists on whether the species has been extinct since Pleistocene times, or if a sub-species of Thylacoleo still survives in remote mountainous regions, particularly in eastern Australia.

Drawing by Peter Schouten, from "Prehistoric Animals of Australia", The Australian Museum, Sydney 1983.

Another reconstruction of what Thylacoleo carnifex may have looked like. By Martin Thompson. Courtesy Brisbane Courier Mail.





Wakaleo schouteni, illustrated by its namesake Peter Schouten.

ROARSOME FOSSIL FIND

A NEW Australian species of marsupial lion, extinct for at least 19 million years, has been discovered by researchers in remote northwestern Queensland.

The meat-eating lion, the size of a dog and weighing about 23kg, was identified in fossilised remains found in the Riversleigh World Heritage Area.

Named in honour of palaeo-artist Peter Schouten, Wakaleo schouteni was a predator that stalked Australia's abundant rainforests some 18 to 26 million years ago.

Daily Telegraph newspaper release, Thursday 7th December 2017. Yet another species of Marsupial Lion unearthed by scientists! The more fossil evidence found, the more we learn about the anatomy and physiology of these ancient predators.



The mineralised [ironstone] skull of a Marsupial Lion species, recovered by Rex Gilroy in the Megalong Valley below Blackheath NSW, in February 1972. The right facial area was crushed flat during the early stages of mineralisation, and there is a hollow at the rear left facial side where a large pebble had once been lodged. Photo copyright © Rex Gilroy 2017.

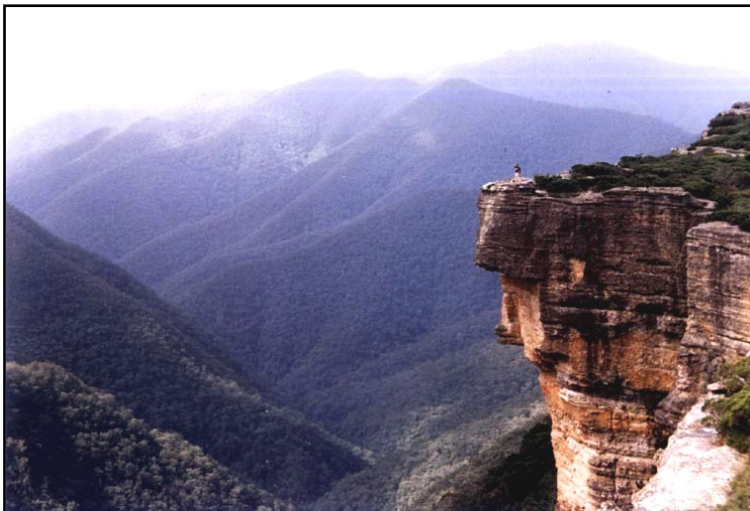


Frontal view. The skull has been flattened on both sides, although the eye sockets are still visible. There is a nasal ridge, with fused lower to upper jaw displaying two broken mineralised incisor teeth. The skull is that of a short muzzled species. The fossil dates to the late Pliocene or early Pleistocene period, suggesting an age anywhere between 2 to 5 million years.

Photo copyright © Rex Gilroy 2017.



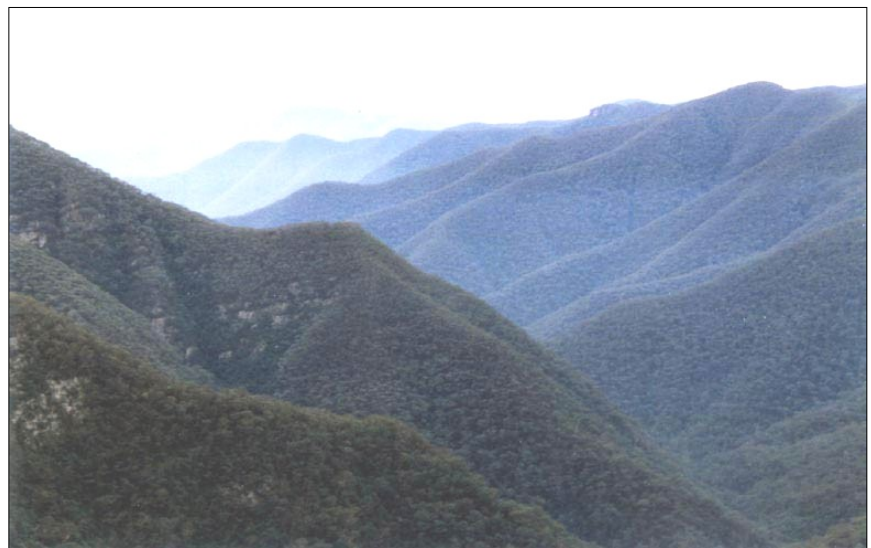
The skull displays a flattish cranium and receding forehead. The fossil comes from a region long steeped in stories of "Blue Mountains Lion" encounters. Photo copyright © Rex Gilroy 2017.



“Jedda Rock”, Kanangra Walls, made famous by the 1954 Australian feature film “Jedda” of Charles Chauvel. It was from this cliff top that Jedda and her Aboriginal kidnapper fell at the end of the film. The Valley beyond is known as ‘Big Cat’ country by campers.

Photo copyright © Rex Gilroy 2017.

The deep, almost impenetrable valleys of the Kanangra Boyd wildernesses as seen from Kanangra Walls. Hereabouts campers have been reporting encounters with Thylacines, ‘panthers’ and ‘Blue Mountains Lions’ for generations.
Photo copyright © Rex Gilroy 2017.



Narrow Neck Plateau, extending south-west of Katoomba, with Megalong Valley flanking its western side and Jamieson and Cedar Valleys on its eastern, its far end overlooking the vast Burratorang Valley. The Plateau has periodically been the scene of ‘panther’ encounters and sightings of the notorious ‘Blue Mountains Lion’. These carnivores are believed to reach the Plateau summit via a steeply descending gully down which a creek flows, fed by isolated swamps. This same route was used by early Burratorang-Megalong Aborigines. Sightings of ‘panthers’ and ‘lions’ on the Plateau often coincide with sightings of these marsupials and reports of stock attacks on Megalong Valley properties.

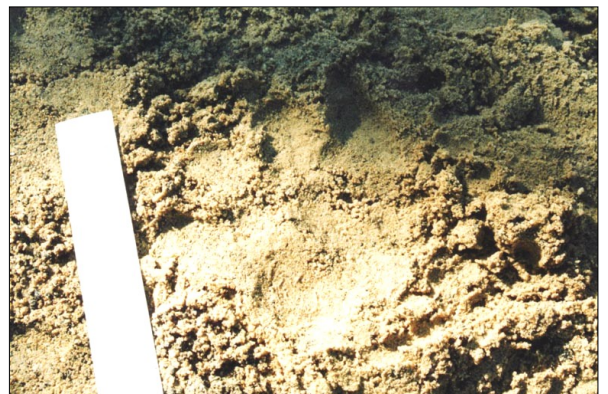
Photo copyright © Rex Gilroy 2017.



At this muddy [sometimes shallow water pool] section of a disused dirt fire trail out on Narrow Neck Plateau, Rex Gilroy and Greg Foster, in the course of a television news interview by an ATN Channel 7 crew on Tuesday 15th March, 2005 found three large 'Blue Mountains Lion' paw impressions in mud. On a later visit here together with Heather, Rex discovered a 'maze' of paw prints and other markings made by two of these carnivores when they emerged from the nearby bush to drink at the pool. Rex attempted to follow the tracks up the fire trail and into the bush, but they faded away in the forest leaf litter. A large heavy round plaster cast was shortly afterwards made of these impressions. Photo copyright © Rex Gilroy 2017.

The three large 'lion' paw impressions found by Rex and Greg on Tuesday 15th March 2005. Two of the paw impressions measured 18cm long by 28cm wide across the toes and 14cm long by 21cm wide across the toes. Photo copyright t© Rex Gilroy 2017.

The third paw impression measured 22cm long by 21cm wide. Photo copyright © Rex Gilroy 2017.



Rex Gilroy and Greg Foster with the large round cast the Gilroys prepared of the 'maze' of 'lion' paw impressions at the Narrow Neck Plateau pool. Photo copyright © Rex Gilroy 2017.



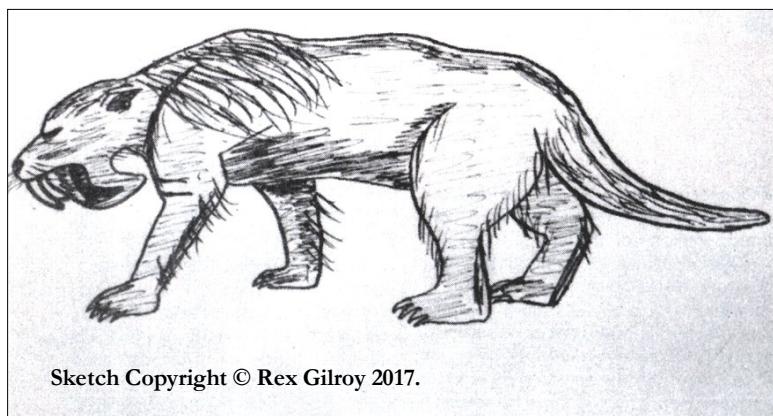
As the impressions do not stand out clearly in the white plaster they have been outlined in pen for photographic purposes. Photo copyright © Rex Gilroy 2017.



*A close up of the huge paw impressions.
Photo copyright © Rex Gilroy 2017.*

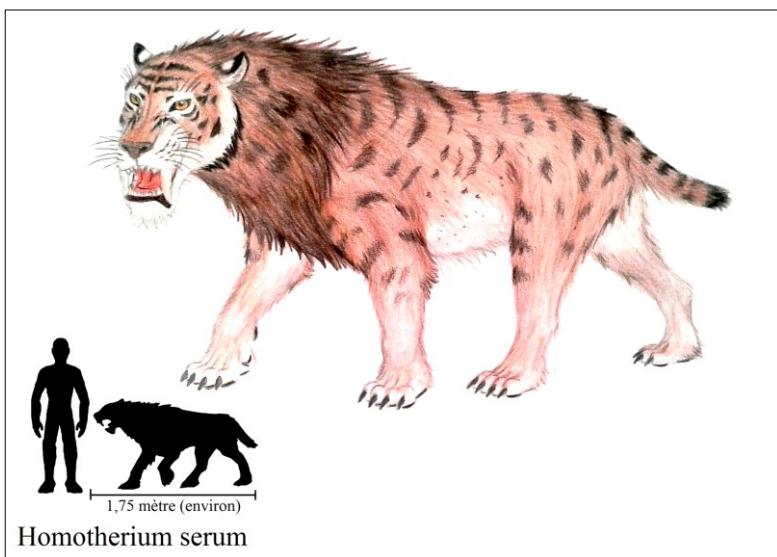


Two plaster casts of 'Blue Mountains Lion' paw prints, displaying the three characteristic lobes typical of marsupials discovered on Narrow Neck Plateau in April 2003. These huge mega-marsupials have roamed the Blue Mountains since Ice-Age times. Photo copyright © Rex Gilroy 2017.



Sketch Copyright © Rex Gilroy 2017.

*The smaller form [or are they actually juveniles?] of the larger "Blue Mountains Lion."
Sketch copyright © Rex Gilroy 2017.*



*Artist's impression of a Homotherium, based upon fossil remains.
Wikipedia image.*



A fossil paw impression found at Mesa Verde, Colorado, USA, by Rex & Heather Gilroy in October 2014. Did this species of giant felid reach Australia from Java in Pleistocene times? Photo Copyright © Rex Gilroy 2017.

PLEASE NOTE: The next meeting will be held on 20th January, 2018, same time, same place. *Our previous meeting was a good one and we look forward to seeing you at our next one. There should be some good Skywatches ahead of us up here at Katoomba weather permitting. Meanwhile, there is a lot happening 'up there' at present so –until our next meeting –Keep safe and*

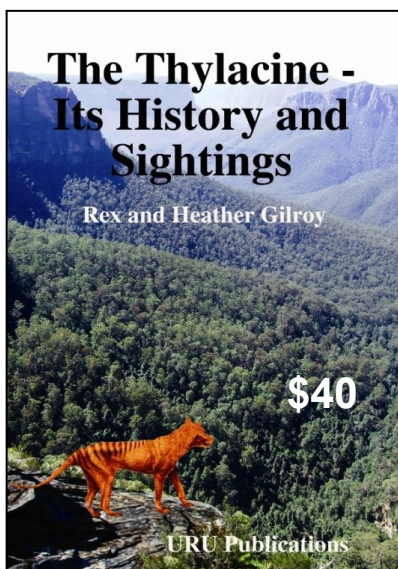
'Watch the Skies'!



Rex and Heather

URU Publications. PO Box 202, Katoomba NSW 2780.
Phone 02 47823441 randhgilroy1044@gmail.com

Other titles are also available, directly from us or from Lulu.com
Full pricelist available – please contact us. All prices shown in AUD
plus p&h \$A15 in Australia, [overseas postage on application].
Sorry NO Credit Card transactions.



The Thylacine, or Tasmanian Tiger, the subject of a growing list of books, scientific papers and magazine articles going back many years, while officially regarded as extinct by many scientists, STILL SURVIVES. That is the message of this latest book on the Thylacine which goes further than all previous books on the subject, by revealing the evolutionary history, anatomy and physiology of the species and, that besides Tasmania, Thylacines also survive on mainland Australia and in the New Guinea landmass.