

Nitrox & Hamachi Guide

Installing Nitrox

Sunday, January 6, 2019 2:03 PM

Step one

Download the mod from <https://www.nexusmods.com/subnautica/mods/159>

Registering a Account

Or just login if you already have an account.

1. Click Manual downloads
2. click signup
3. click Register now
4. click Create Account
5. Fillout form then click Create Account

Installing Nitrox multiplayer mod

Once the installer finishes open it

Follow all prompts

Make sure to point the installer to Subnautica location

Examples:

Steam : C:\Program Files (x86)\Steam\steamapps\common\Subnautica

Epic:C:\Program Files\Epic Games\Subnautica

Then click install

The Screen will dim asking permissions allow it.

Once finished you should have the mod installed

Starting the Nitrox Server

Sunday, January 6, 2019 6:58 PM

Where is the server?

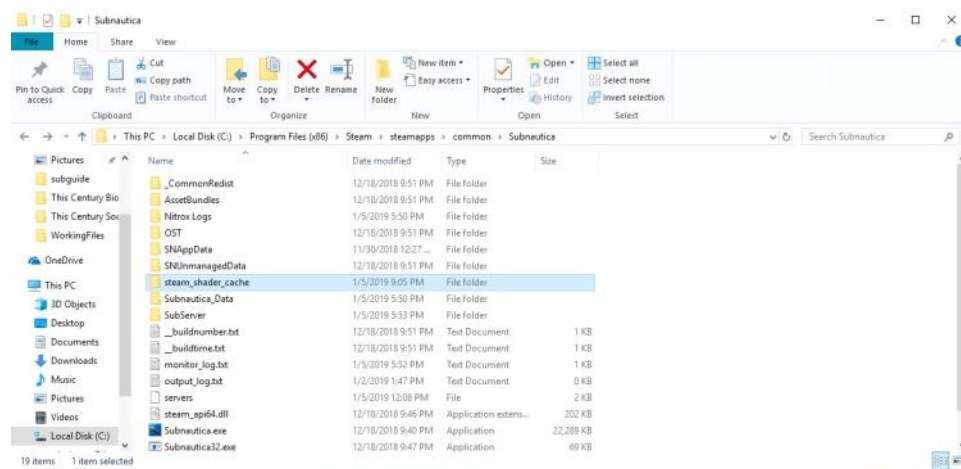
It is located in Subnautica folder in Subserver start Nitroxserver.exe

How can I host a server?

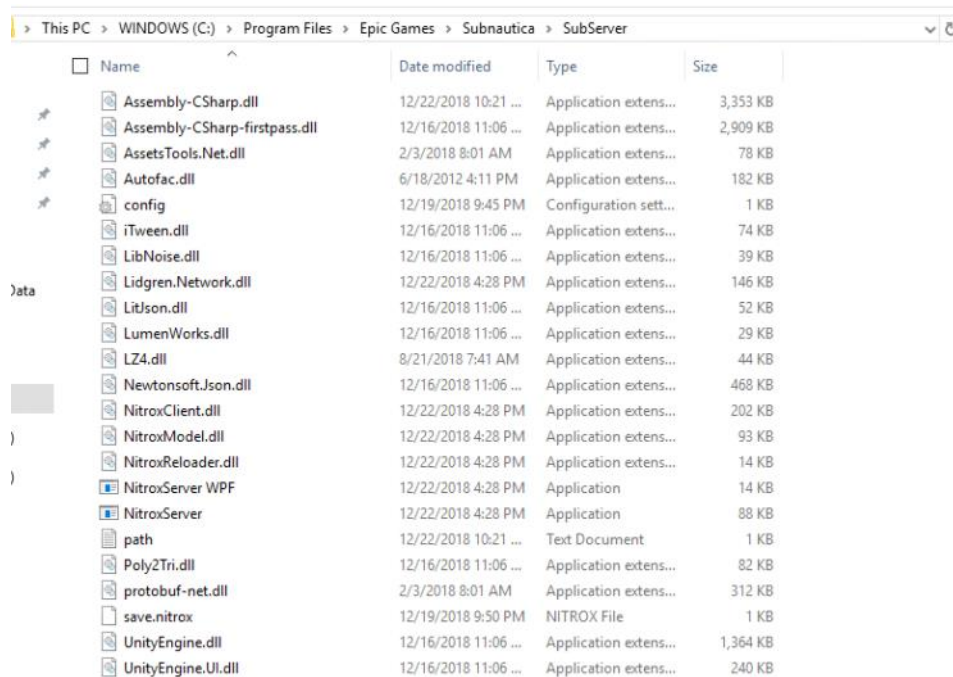
You would need to port forward in your router or install a Tunneling program

Like Hamachi www.vpn.net

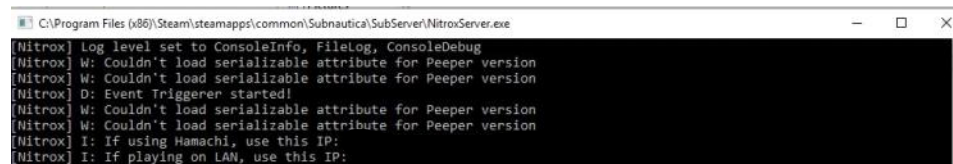
Go to your subnautica Folder



Click subserver



Start Nitroxserver.exe



```
[Nitrox] W: Couldn't load serializable attribute for Peeper version
[Nitrox] D: Event Triggerer started!
[Nitrox] W: Couldn't load serializable attribute for Peeper version
[Nitrox] W: Couldn't load serializable attribute for Peeper version
[Nitrox] I: If using Hamachi, use this IP:
[Nitrox] I: If playing on LAN, use this IP:
[Nitrox] I: Nitrox Server Started
[Nitrox] I: If using port forwarding, use this IP:
```

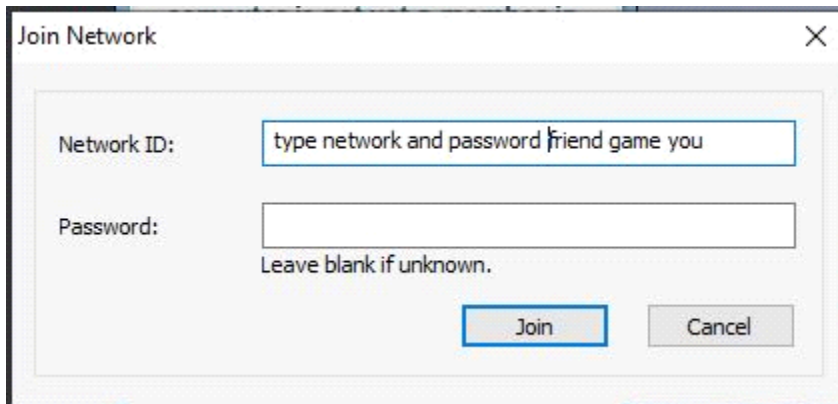
If your server looks like this your good

How to create a network

Sunday, January 6, 2019 6:24 PM



Click Create a new network



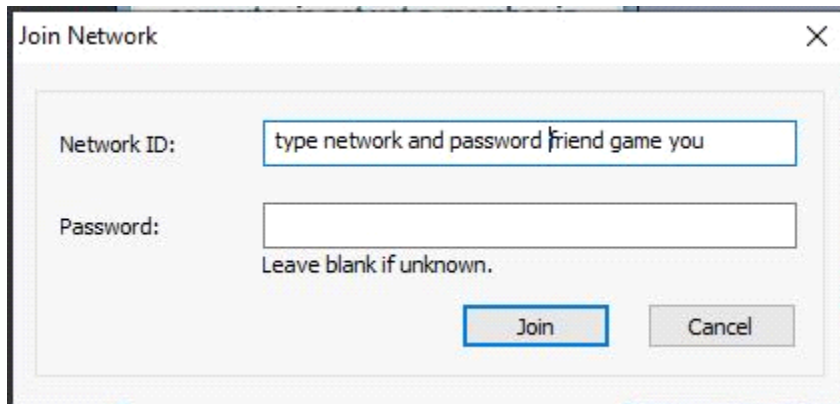
NetworkID: can be anything you want it to be

Password : can also be anything you want it to be

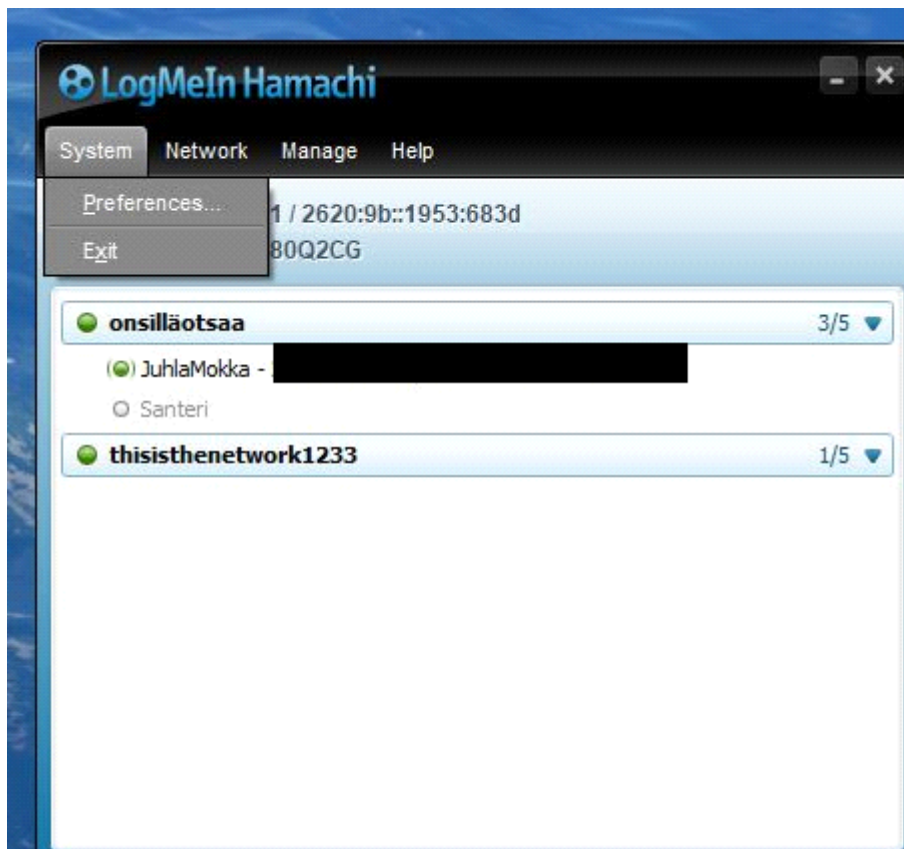
Note: remember to write this information down to give to your friend to join your network

How to Join a network

Sunday, January 6, 2019 6:25 PM



Enter the networkid and password your friend gave you
Then click join

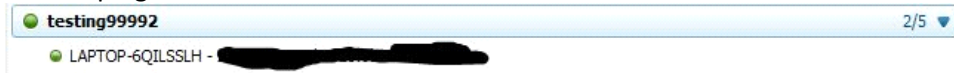


Now your joined in your friends network

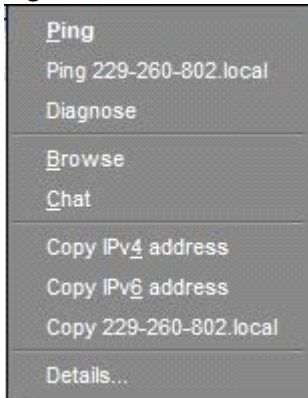
How To Ping and Diagnose connection

Sunday, January 6, 2019 6:27 PM

How to ping



Right Click on connected users name

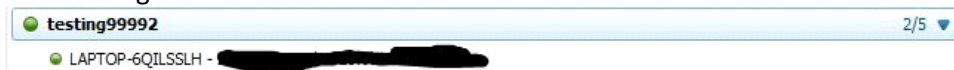


Click Ping

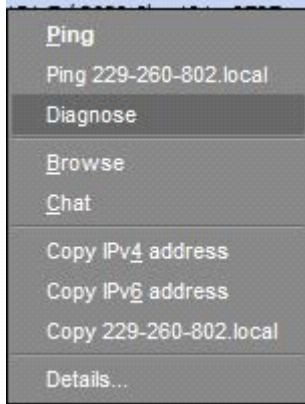


If its times out please use Diagnose connection

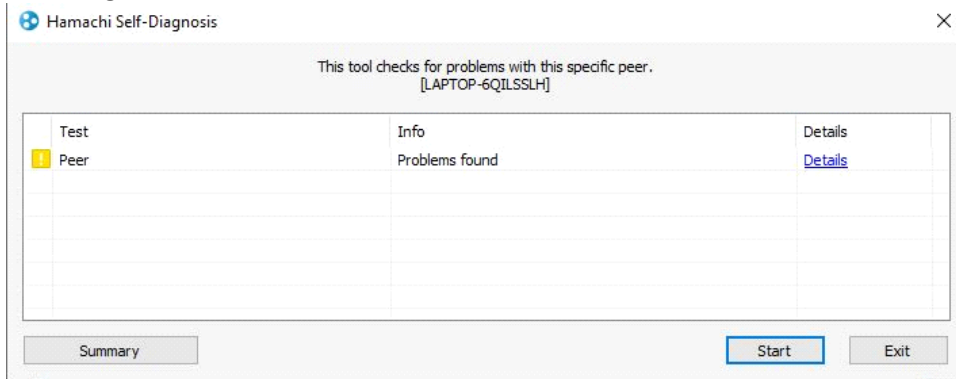
How to Diagnose Connection



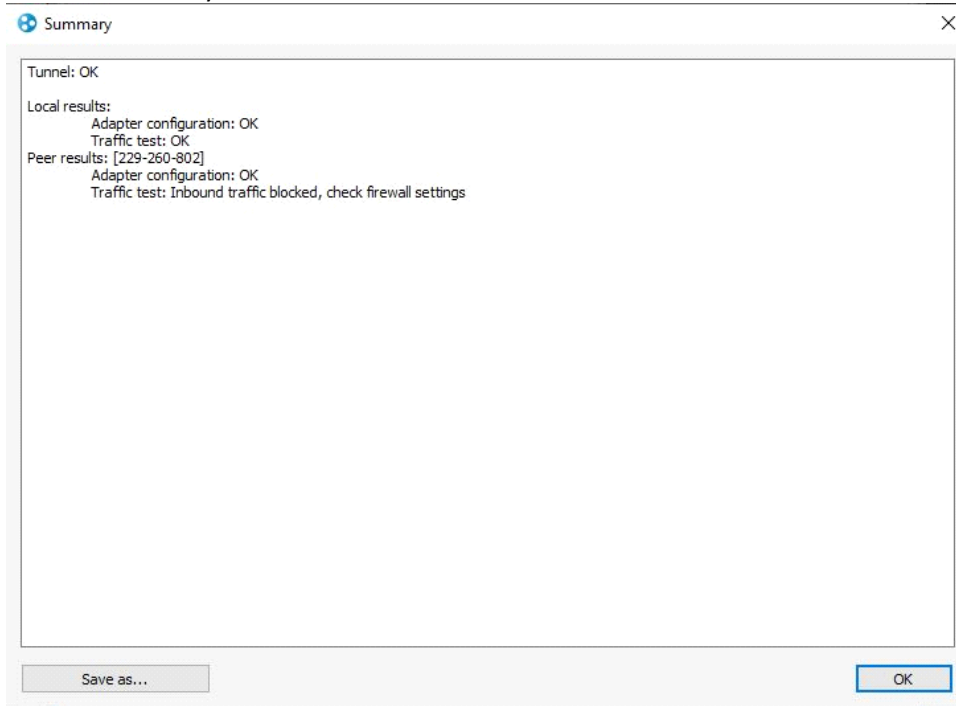
Right click on connected username



Click diagnose



Click on summary



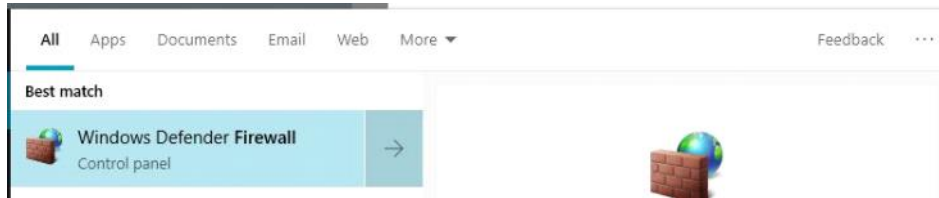
Inbound Traffic Blocked = firewall is blocking it
Ok on all = good to go

Hamachi Firewall help

Sunday, January 6, 2019 6:41 PM

Everyone going to join must do this

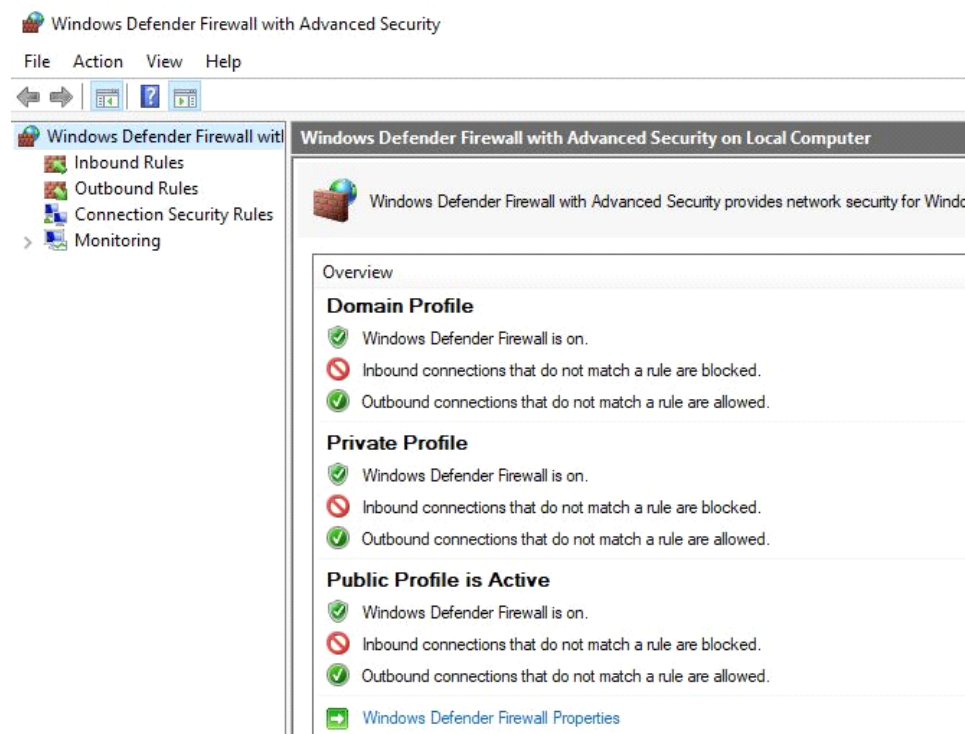
Search for firewall



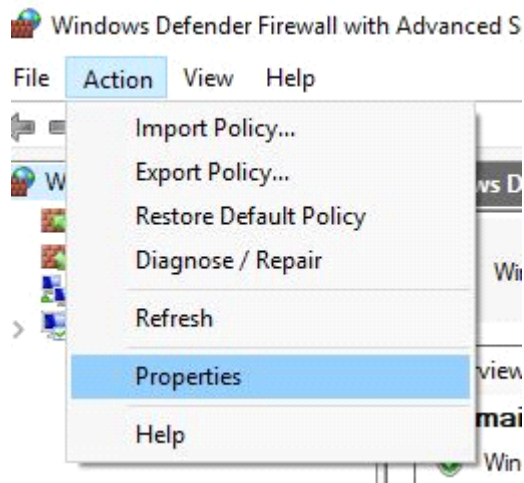
Open windows defender firewall



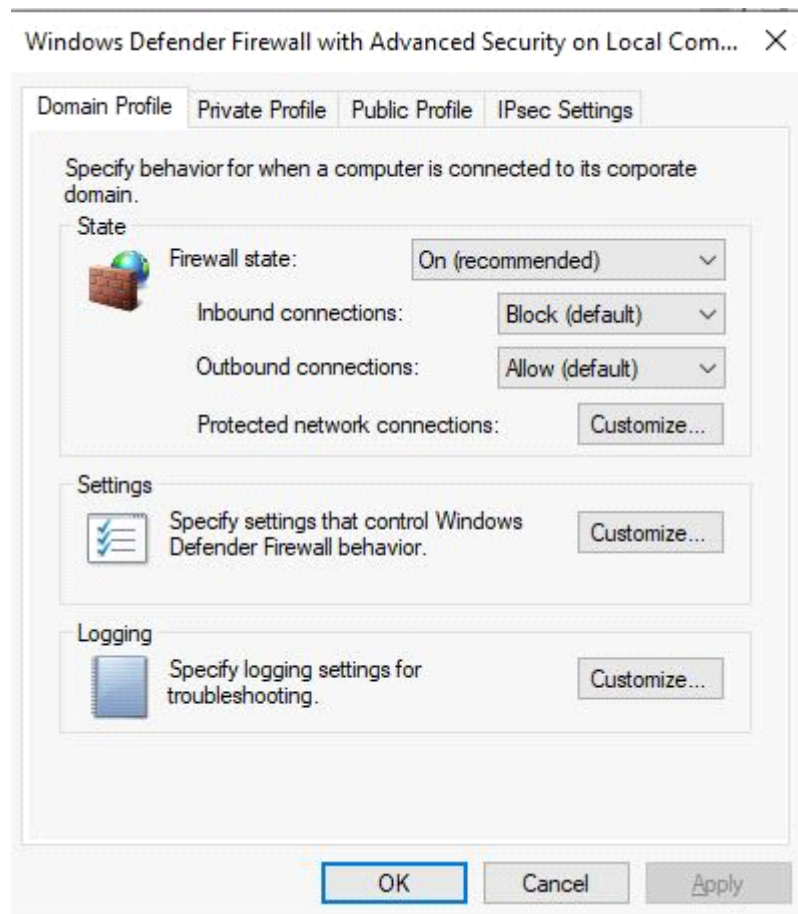
Click on advanced



Click on actions

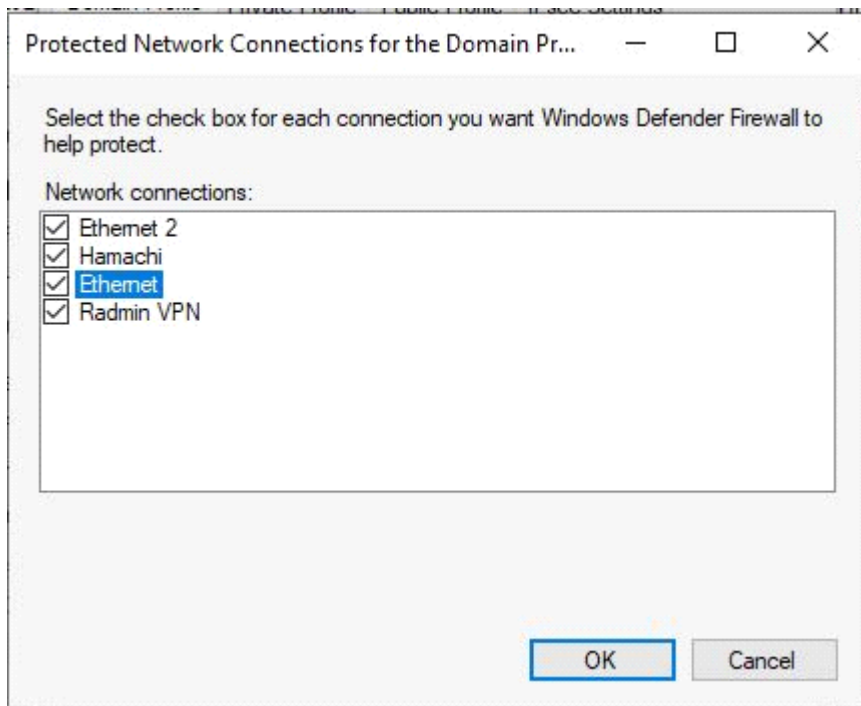


Properties

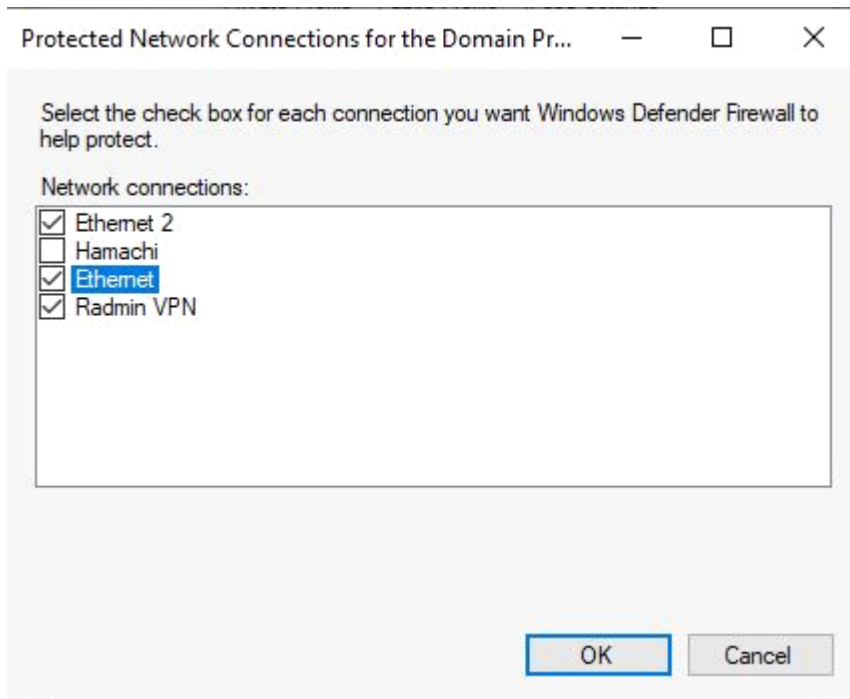


Click customize

You must Repeat this on all the tabs



Uncheck hamachi



Then click ok

Then repeat on each other tab.

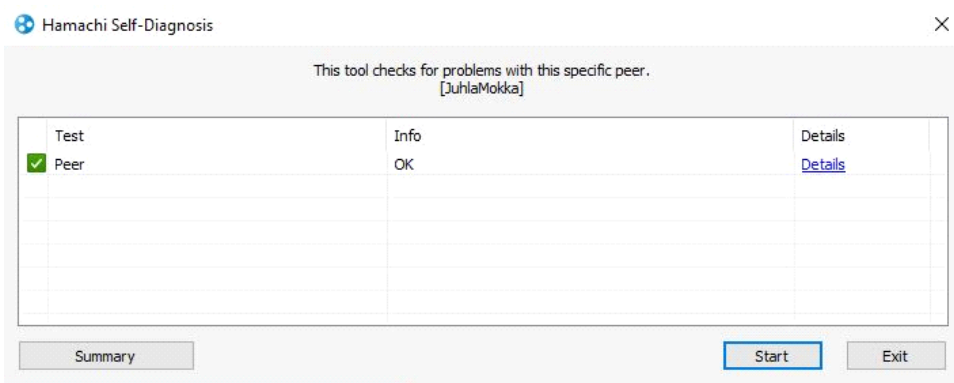


Firewall should look like this

And now you can get a ping and diagnose should be green

```
Pinging 25.83.104.61 with 32 bytes of data:
Reply from 25.83.104.61: bytes=32 time<1ms TTL=128
Reply from 25.83.104.61: bytes=32 time<1ms TTL=128
Reply from 25.83.104.61: bytes=32 time<1ms TTL=128
Reply from 25.83.104.61: bytes=32 time<1ms TTL=128

Ping statistics for 25.83.104.61:
    Packets: Sent = 4, Received = 4, Lost = 0 (0% loss),
    Approximate round trip times in milli-seconds:
        Minimum = 0ms, Maximum = 0ms, Average = 0ms
```

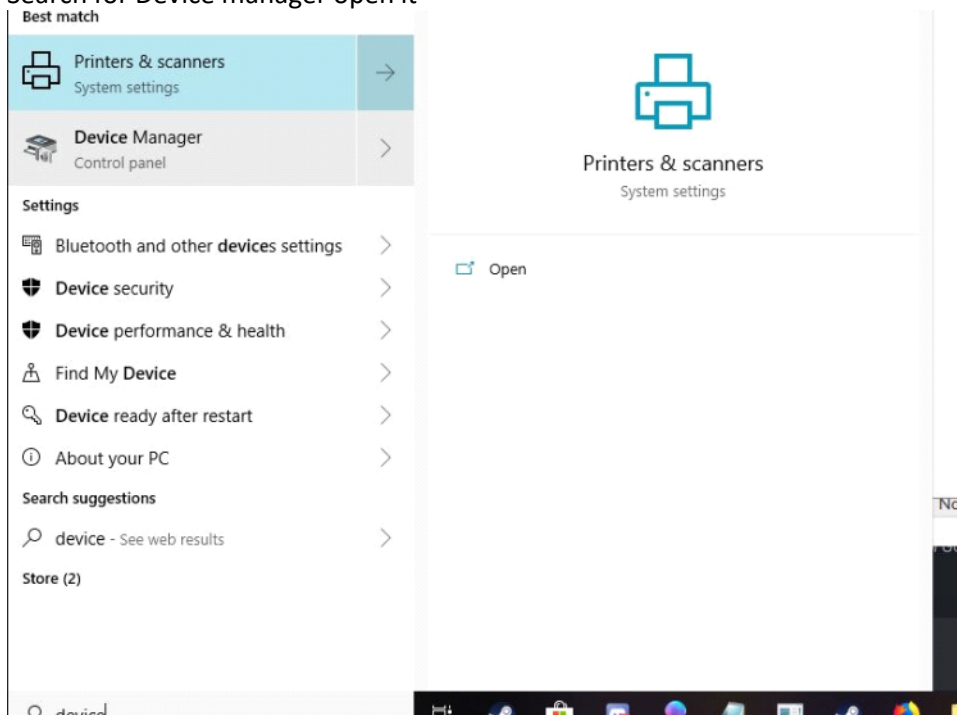


If everything looks like this you can connect.

Hamachi Adapter problems

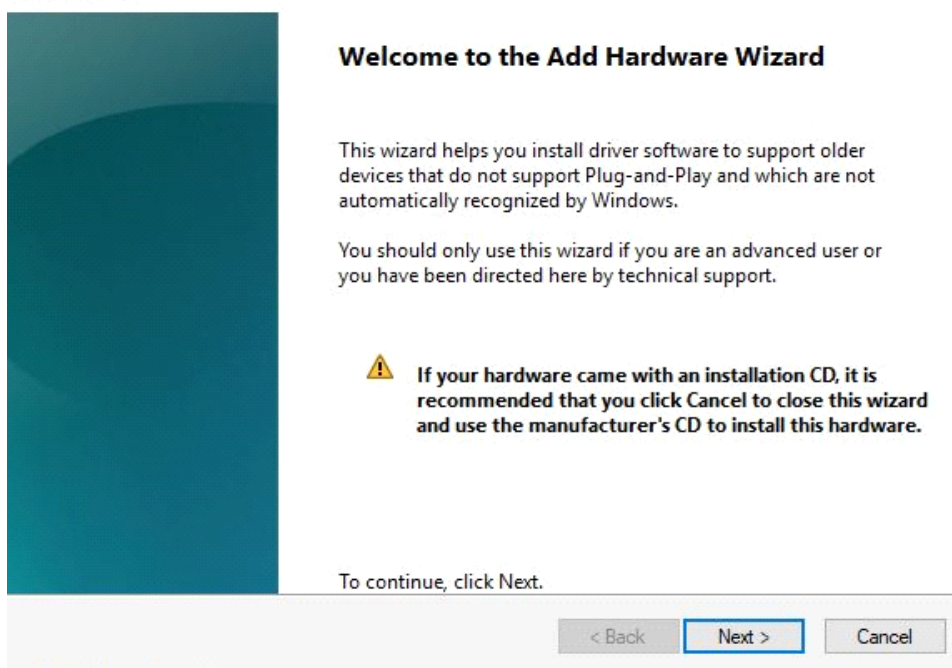
Sunday, January 6, 2019 10:23 PM

1. Search for Device manager open it

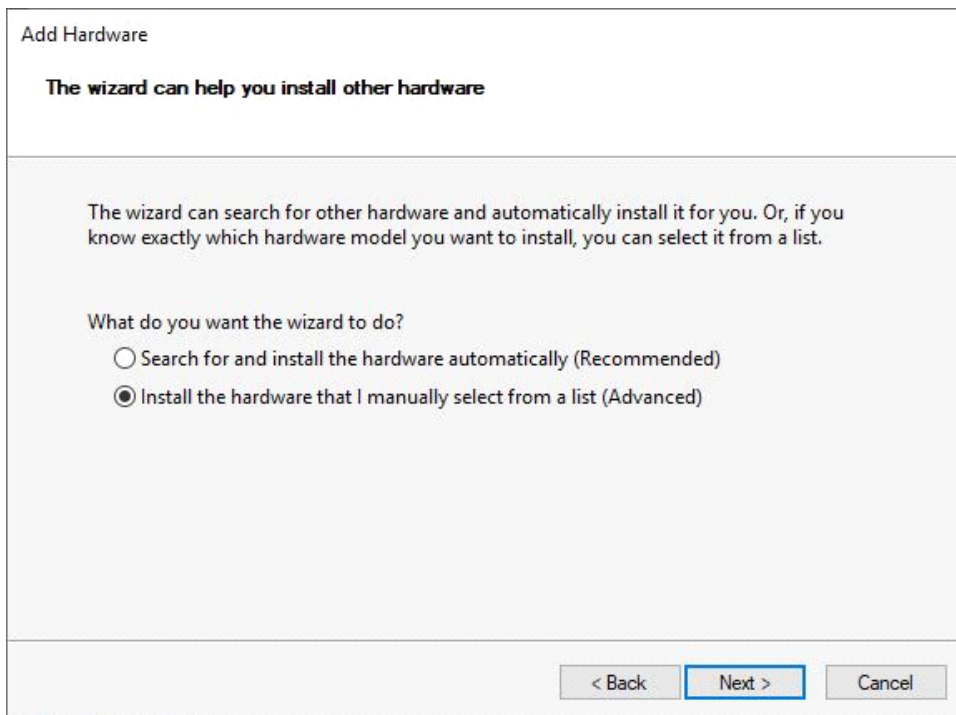


2. Click on network adapters the side arrow
3. Look for Logmein hamachi virtual Ethernet adapter (if its there you done)
4. If its not there here are steps to install it
5. Click Actions
6. Add legacy hardware

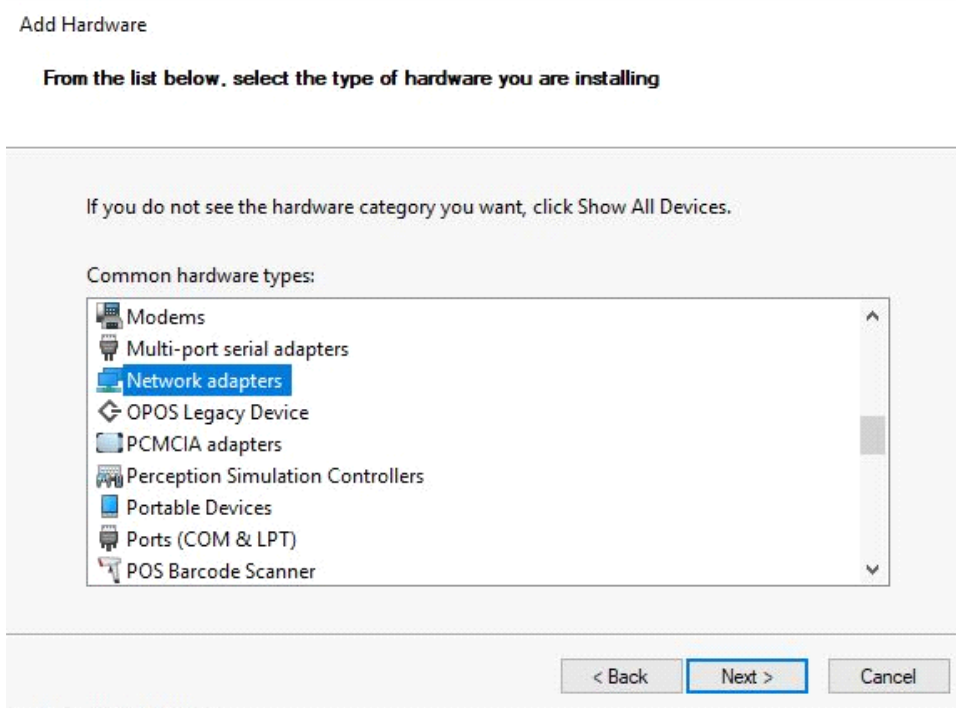
Add Hardware



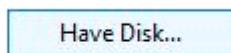
Click next



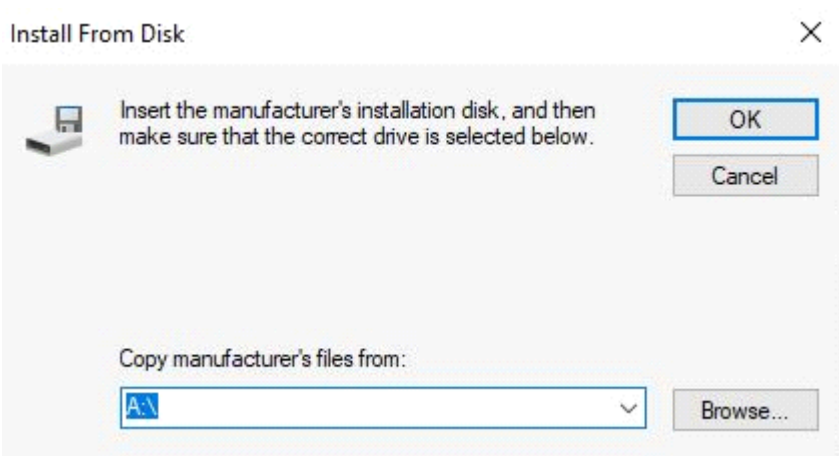
Click next



Select network adapters

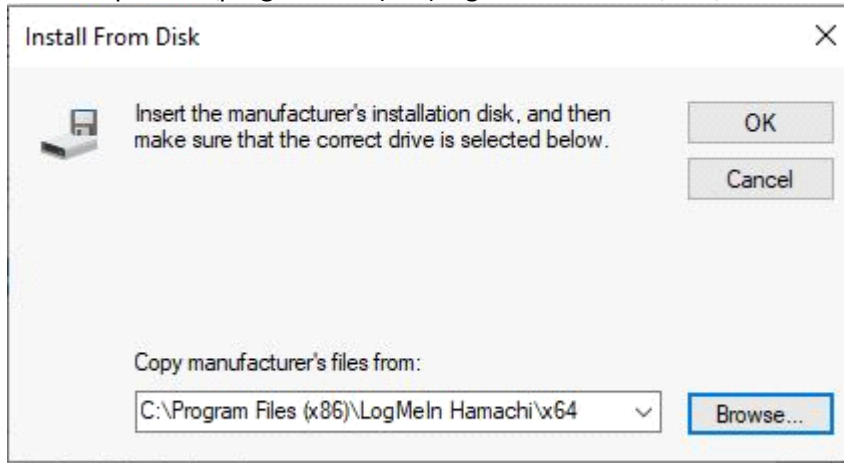


Click have disk



Click browse

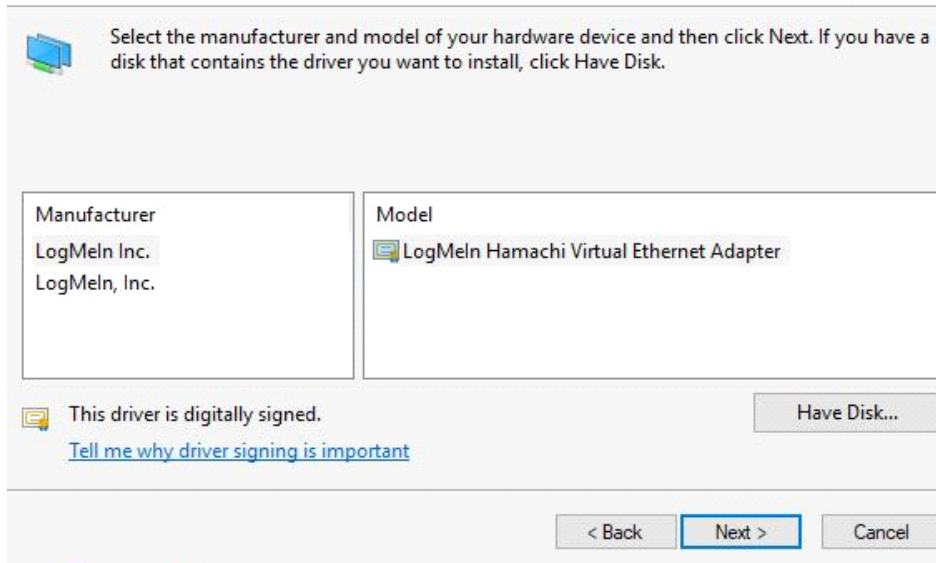
Find this path :C:\program files(x86)LogMeIn Hamachi\x64\



Click ok

Add Hardware

Select the device driver you want to install for this hardware.



Click next

Add Hardware

The wizard is ready to install your hardware

Hardware to install:



LogMeIn Hamachi Virtual Ethernet Adapter

To start installing your new hardware, click Next.

< Back

Next >

Cancel

Click next and it should install it



LogMeIn Hamachi Virtual Ethernet Adapter

You should now have the adapter installed ...

Hamachi Check list

1. Nitrox server is started
2. Network was created and friend is joined to it
3. Can you ping right click name click ping
4. Diagnose is green? right click name click diagnose .
5. Firewall port is allowed ? Port 11000 udp
6. Friend is using hamachi ip4 by right clicking name and copy ip4
7. Am host and I'm connecting to server with Local

Hamachi Help

What port do I need to allow?

Port 11000 udp .

We can't connect to the server?

If you just want to test the server locally just launch the server.exe in Subserver within Subnautica folder.

We are using Hamachi what then?

1. Make sure you can ping the host by right clicking there name and clicking ping

The ping timed out helppp!

1. Next right click the host and click on diagnose connection

It's all green no errors but we still can't connect ?

1. Then you should check if you have any antivirus software blocking Like an internet security antivirus with another firewall. Also make sure you have the server started.

1. If it was started before you setup Hamachi restart it .

It's says tunneling is down ?

1. Reinstall Hamachi make sure to restart before you install again this should fix it.

Incoming traffic Is blocked on both sides what now?

1. Each person must search for firewall and open it
2. Click on advanced
3. Actions
4. Properties
5. Doman/private/public
6. Click on customize and uncheck hamachi on all tabs
7. Then try to ping the host by right clicking their name in hamachi.

cannot get adapter config ?

1. Go to Start > Run, and type hdwwiz.cpl. If you receive an error, or your computer runs on Windows 7 or Vista, try again with hdwwiz only.
2. If it begins searching immediately, let it finish, then choose Yes, I have already connected the hardware
3. If it displays the currently installed devices, scroll down to the bottom.

4. Choose Add a new hardware device. If it is not there, go to the next step.
5. Choose Install the hardware that I manually select from a list (Advanced).
6. Select Network adapters.

7. Click Have Disk and then Browse.
 8. Browse hamachi installation folder, and select the setup information file for your system.
 9. Select hamdrv.inf: Windows 8 and above
20. Finish the installation of the adapter.