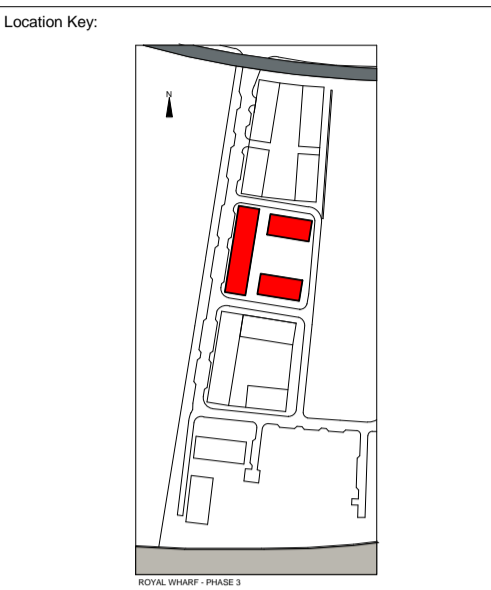
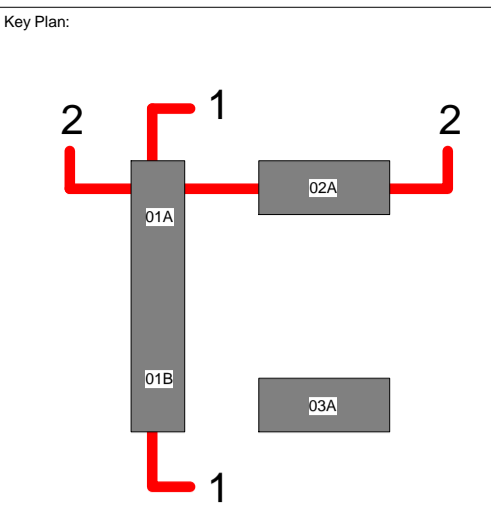


1 Building 01 Long Section
16088-TA-P-24.00-2-150 : 200



2 Building 01 and 02 Section
16088-TA-P-24.00-2-150 : 200



Rev By Date Description
AJ 16/03/17 Planning - Updated drawings issue

Revisions:

BALLYMORE

ROYAL WHARF - PHASE 3

Drawing Title:

Building Sections 01

TODD ARCHITECTS
255 TOTTENHAM ROAD,
4 FLORENCE ROAD,
BUNFORD, BIRMINGHAM,
B15 2JG
T: 0121 455 0000
F: 0121 455 0001
E: INFO@TODDARCH.CO.UK
W: WWW.TODDARCH.CO.UK



Drawing No: 16088-TA-P-24.00-2-150

Project No: 16088

Scale: 1 : 200

Date: 03/16/17

Plot: Checker: WJP

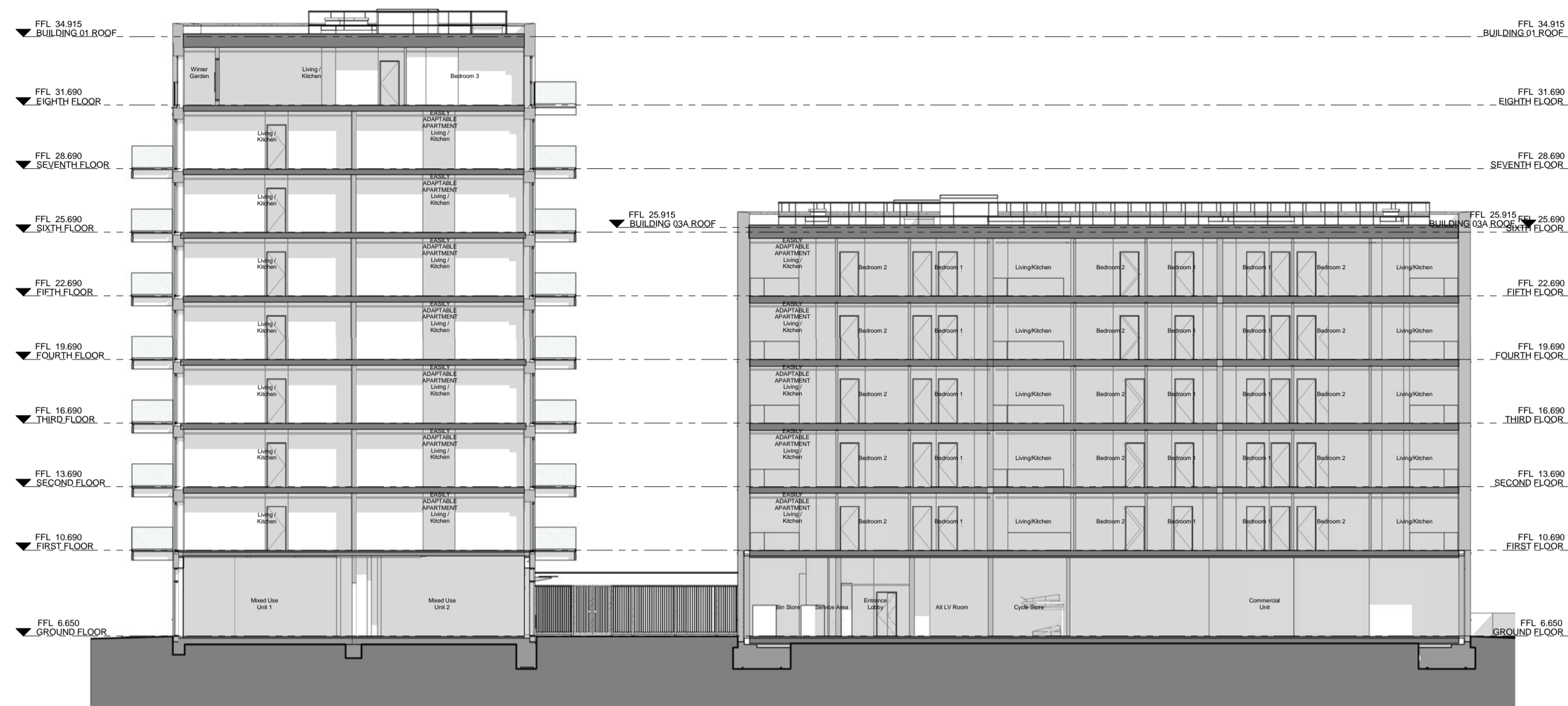
Plot: Checker: WJP

Plot: Checker: WJP

Plot: Checker: WJP

Plot: Checker: WJP

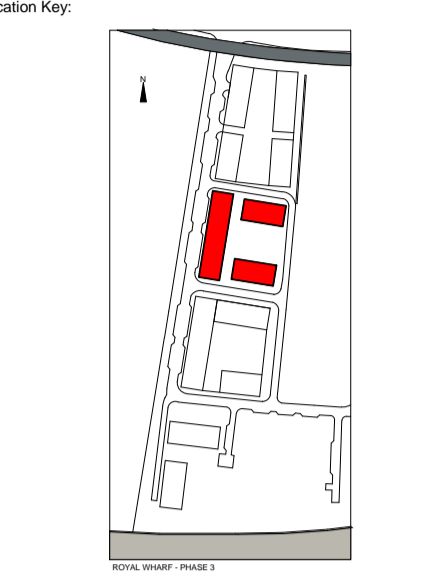
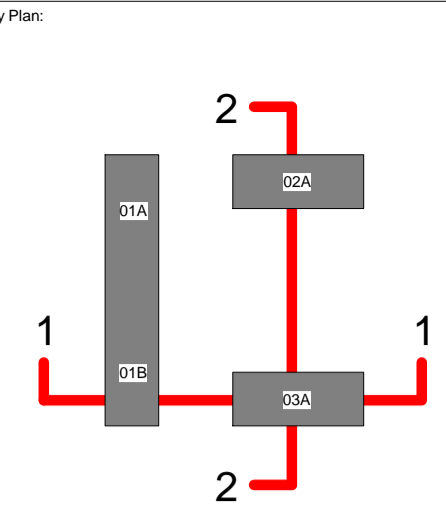
Plot: Checker: WJP



1 Building 01 and 03 Section
16088-TA-P-24.00-2-151 : 200



2 Building 02 and 03 Section
16088-TA-P-24.00-2-151 : 200



AJ 16/03/17 Planning - Updated drawings issue
Rev By Date Description

Revisions:

BALLYMORE

ROYAL WHARF - PHASE 3

Drawing Title:

Building Sections 2

TODD ARCHITECTS
252 TOTTENHAM ROAD,
6 SLOAN SQUARE,
BUNFORD, BIRMINGHAM,
B15 2JG
T: 0121 717 0000
F: 0121 717 0001
E: INFO@TODDARCH.CO.UK
W: WWW.TODDARCH.CO.UK

Drawing No: 16088-TA-P-24.00-2-151
Revision: -

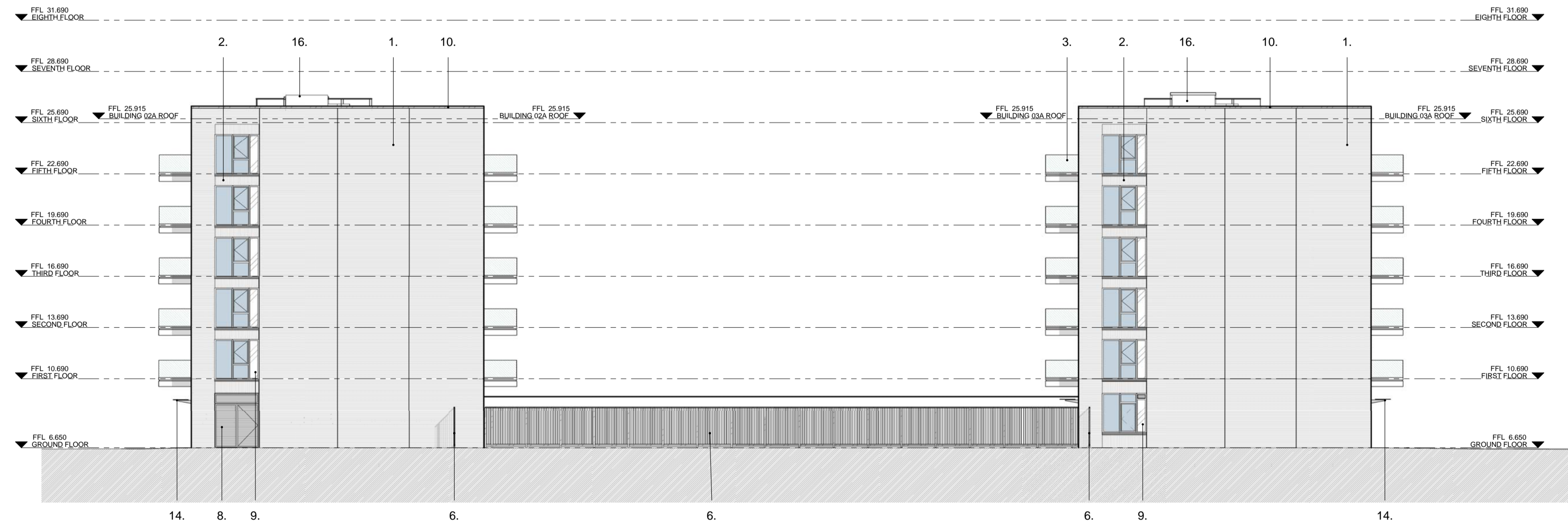
Project No:	Scale:	Date:
16088	1 : 200	03/16/17
Plot:	Checker:	Scale:
	WJP	

DISCLAIMER: TODD ARCHITECTS CONFIRMS THAT RECIPIENTS CAN RELY ON APPROVED DOCUMENTS ONLY FOR INFORMATION PURPOSES. TODD ARCHITECTS DOES NOT WARRANT THE ACCURACY OF INFORMATION PROVIDED IN THESE DOCUMENTS. RECIPIENTS SHOULD VERIFY THE ACCURACY OF INFORMATION PROVIDED IN THESE DOCUMENTS. TODD ARCHITECTS ACCEPTS NO LIABILITY FOR ANY LOSS OR DAMAGE ARISING AS A RESULT OF RELIANCE ON THESE DOCUMENTS. RECIPIENTS SHOULD VERIFY THE ACCURACY OF INFORMATION PROVIDED IN THESE DOCUMENTS. TODD ARCHITECTS ACCEPTS NO LIABILITY FOR ANY LOSS OR DAMAGE ARISING AS A RESULT OF RELIANCE ON THESE DOCUMENTS.



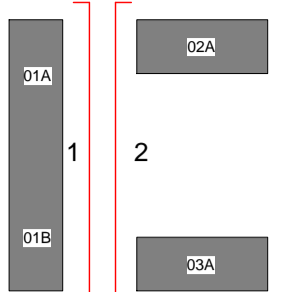
1 Building 01 - East Elevation
16088-TA-P-24.00-2-162 : 200

1. Brickwork - Marziale
2. Recessed Brickwork Marziale
3. Glass Balustrade
4. MVHR Grille within brickwork
5. MVHR grille within aluminium window frame
6. Metal Fence
7. Aluminium window /door frame PPC RAL 7006
8. Aluminium loured doors PPC RAL 7006
9. PPC RAL 7006 RAL metal panel incorporated into aluminium window frame
10. Aluminium coping PPC RAL 7006
11. Dry rise inlet box
12. Aluminium curtain walling system PPC RAL 7006
13. Aluminium louvres PPC RAL 7006
14. Entrance canopy
15. Metal Balustrade PPC RAL 7006
16. Lift Overrun

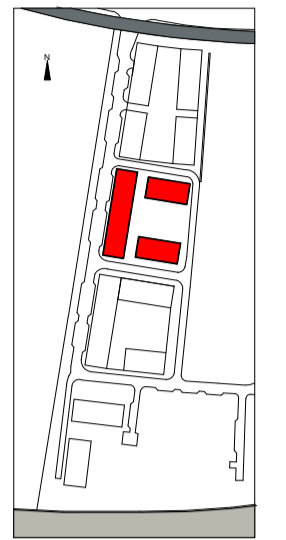


2 Building 02 and 03 Gable Elevations
16088-TA-P-24.00-2-162 : 200

Key Plan:



Location Key:



AJ 16/03/17 Planning - Updated drawings issue
Rev By Date Description

Revisions:

BALLYMORE

Project:

ROYAL WHARF - PHASE 3

Drawing Title:

East and West Courtyard Elevations

TODD ARCHITECTS
2nd FLOOR TRINITY HOUSE,
6 GLEBE ROAD,
BALLYMORE, DUBLIN 4,
E. IRELAND
T: +353 1 4088 888
F: +353 1 4088 888
W: WWW.TODDARCH.CO.UK



Drawing No: 16088-TA-P-24.00-2-162 Revision: -

Project No: 16088	Scale: As indicated	Date: 03/10/17
Plot:	Checked: WJP	Status:

DISCLAIMER: TODD ARCHITECTS CONFIRMS THAT RECIPIENTS CAN RELY ON APPROVED DOCUMENTS FOR INFORMATION AND ACTION. TODD ARCHITECTS ACCEPTS NO LIABILITY FOR ANY LOSS OR DAMAGE ARISING AS A RESULT OF RELIANCE ON THE INFORMATION PROVIDED IN THIS DOCUMENT. RECIPIENTS SHOULD VERIFY ALL INFORMATION AND ACTION WITH THE APPROPRIATE AUTHORITIES. TODD ARCHITECTS IS NOT RESPONSIBLE FOR ANY LOSS OR DAMAGE ARISING AS A RESULT OF RELIANCE ON THE INFORMATION PROVIDED IN THIS DOCUMENT. RECIPIENTS SHOULD VERIFY ALL INFORMATION AND ACTION WITH THE APPROPRIATE AUTHORITIES.



FOR PLANNING APPROVAL

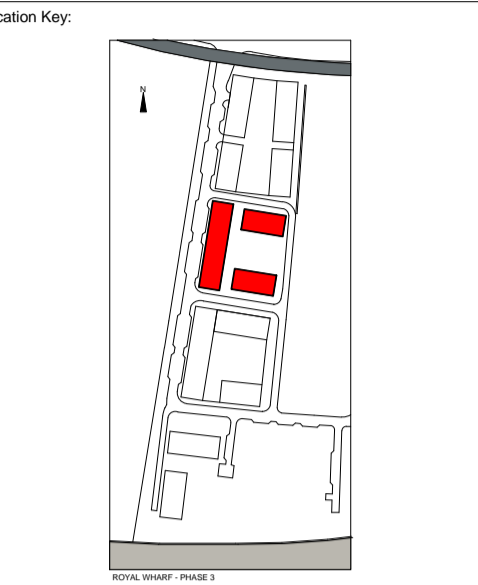
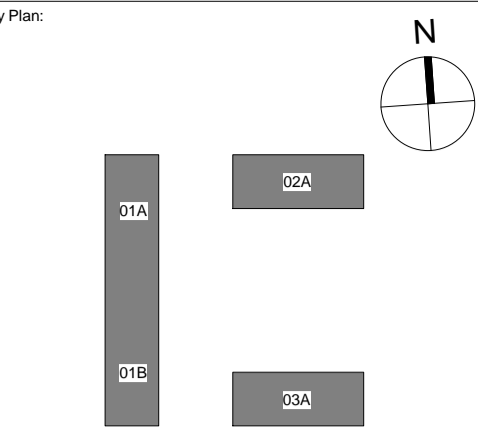
KEY

(Q25 310A) PAVING TYPE 1 900-600mm x 600 x 63mm APPLETON YORKSTONE PAVING BY MARSHALLS OR EQUAL AND APPROVED	(Q25 320A) PAVING TYPE 8 400mm x 400mm x 63mm APPLETON YORKSTONE TACTILE BLISTER PAVING BY MARSHALLS OR EQUAL AND APPROVED	(Q25 320C) 400mm x 400mm x 200mm x 50mm DEPTH CONCRETE CORDUROY TACTILE PAVING BY TOBERMORE OR EQUAL AND APPROVED	(Q52 560) PERMANENT OUTDOOR GYM EQUIPMENT	RAISED DLR TRACKS AND COLUMNS
(Q25 330A) PAVING TYPE 8 200mm x 100mm x 80mm APPLETON YORKSTONE SETTS BY MARSHALLS OR EQUAL AND APPROVED	(Q25 320) PAVING TYPE 9 400mm x 400mm x 65mm MAYFAIR NATURAL TACTILE BLISTER PAVING BY TOBERMORE OR EQUAL AND APPROVED	(Q25 330A) 100mm x 100mm x 50mm DEPTH CROPPED GRANITE SETTS BY HARDSCAPE OR EQUAL AND APPROVED	(Q50 240) ECO STEEL LITTER BIN BY BROXAP OF EQUAL AND APPROVED	(Q31 292) CONICA PLANTER BY ESCOFET OR EQUAL AND APPROVED
(Q25 315A) PAVING TYPE 3 600mm x 400mm x 50mm MAYFAIR PC PAVING BY TOBERMORE OR EQUAL AND APPROVED	(Q23 110A) PAVING TYPE 11 3mm AGGREGATE BRITANNY BRONZE RESIN BOUND GRAVEL BY ADDAGRIP OR EQUAL AND APPROVED	(Q25 315C) 600mm x 200mm x 80mm ANDOVER CONCRETE PAVING STEPPING STONES BY EVANS CONCRETE OR EQUAL AND APPROVED.	(Q50 190) 101mm DIAMETER BOLLARD WITH REFLECTIVE HAZARD STRIP BY KENT STAINLESS OR EQUAL AND APPROVED	CORDEK RECTANGULAR GULLY GAS VENT TO ARCHITECT'S DETAIL AND SPECIFICATION
(Q25 335) PAVING TYPE 4 200mm x 100mm x 80mm FUSION CONCRETE SETT MIX BY TOBERMORE OR EQUAL AND APPROVED	(Q23 225) PAVING TYPE 17 2-5mm AGGREGATE BRITANNY BRONZE RESIN BONDED GRAVEL BY ADDASTONE OR EQUAL AND APPROVED	(Q50 225A) BESPOKE CONCRETE BENCHES & PLANTERS	(Q31 200) PROPOSED TREE PLANTING	MANHOLE COVERS TO ENGINEERS DETAIL AND SPECIFICATION
(Q25 315B) PAVING TYPE 5 400mm x 400mm x 50mm MAYFAIR PC PAVING BY TOBERMORE OR EQUAL AND APPROVED	BLACK TOP CARRIAGEWAY SURFACE - TO ENGINEERS DETAIL	(Q25 330C) YORKSTONE SETTS IN YORKSTONE PAVING OUTSIDE EXTERNAL OPENING DOORS	(Q31 200) PROPOSED SPECIMEN SHRUB	ROADSIDE STORM GULLY TO ENGINEERS DETAIL AND SPECIFICATION
(Q25 335B) PAVING TYPE 6 300mm x 200mm x 80mm FUSION PC PAVING BY TOBERMORE OR EQUAL AND APPROVED	(Q55 110) 145mm WIDTH, 25mm DEPTH PREMIUM GRADE IROKO HARDWOOD BY OUTDOOR DECK COMPANY OR EQUAL AND APPROVED	(Q25 335A) CONCRETE SETTS IN CONCRETE PAVING OUTSIDE EXTERNAL OPENING DOORS	(Q30 400) LAWN	(Q50 210) SHEFFIELD STAINLESS BIKE RACK BY KENT STAINLESS EQUAL AND APPROVED
(Q25 330A) PAVING TYPE 7 100mm x 100mm x 50mm GRANITE SETTS BY HARDSCAPE OR EQUAL AND APPROVED		(Q52) CHILDRENS PLAY ELEMENT	(Q31 235) SHRUB AND HERBACEOUS PLANTING	
			(Q31 470) HEDGE PLANTING	

Project ROYAL WHARF PHASE 3	Drawing Title LANDSCAPE FINISHES PLAN AND STREETSCAPE PLOT 24	Revision P00 - Planning Issue P01 - Tree tags and levels P02 - Layout coordinated with latest building plans P03 - Layout adjusted with new building layout P04 - Amendment for reserved matter application	Date 10.08.15 14.08.15 08.09.15 24.11.15 18.03.17	Client OXLEY WHARF Address: 50 Raffles Place, Singapore Land Tower, Singapore 048623	Consultant TOWNSHEND Landscape Architects 1122P Unit 1E, Zealand House, London EC2A 4EJ Telephone: 020 7729 9333 Fax: 020 7729 3300 E-Mail: ts@townshenda.com	Project No. 465.4	Scale 1:200	Approved By DP	Drawing No. TOWN465.4(08)3024	Revision P04
--------------------------------	--	--	--	--	--	----------------------	----------------	-------------------	----------------------------------	-----------------



1 GROUND FLOOR PLAN
16088-TA-P-24.00-2-100 : 200



A AJ 16/03/17 Planning - Updated drawings issue
AJ 23/12/16 Planning Issue

Rev	By	Date	Description

BALLYMORE

Project:
ROYAL WHARF - PHASE 3

Drawing Title:
Level 00 General Arrangement Layout Plan 00

TODD ARCHITECTS
125 TOOT HILL ROAD,
SOUTHAMPTON, SO9 4NR
T: +44 (0)1703 593939
F: +44 (0)1703 593940
E: INFO@TODDARCH.CO.UK
W: WWW.TODDARCH.CO.UK

TODD

Drawing No: **16088-TA-P-24.00-2-100** Revision: **A**

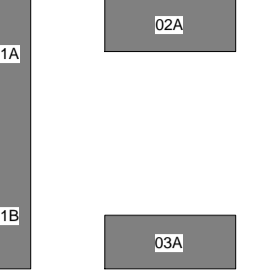
Project No: 16088	Scale: 1 : 200	Date: 12/20/16
Plot: 24	Checked: AJ	Drawn: WJP

TODD ARCHITECTS CONFIRM THAT RECIPIENTS CAN RELY ON APPROVED DOCUMENTS FOR INFORMATION ON THE PROJECTS AND SERVICES PROVIDED. TODD ARCHITECTS CONFIRM THAT RECIPIENTS CAN RELY ON APPROVED DOCUMENTS FOR INFORMATION ON THE PROJECTS AND SERVICES PROVIDED. TODD ARCHITECTS CONFIRM THAT RECIPIENTS CAN RELY ON APPROVED DOCUMENTS FOR INFORMATION ON THE PROJECTS AND SERVICES PROVIDED. TODD ARCHITECTS CONFIRM THAT RECIPIENTS CAN RELY ON APPROVED DOCUMENTS FOR INFORMATION ON THE PROJECTS AND SERVICES PROVIDED. TODD ARCHITECTS CONFIRM THAT RECIPIENTS CAN RELY ON APPROVED DOCUMENTS FOR INFORMATION ON THE PROJECTS AND SERVICES PROVIDED.

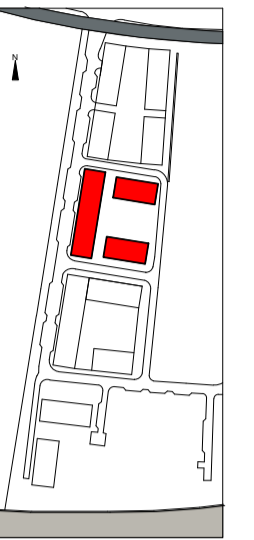


1 SECOND FLOOR PLAN
16088-TA-P-24.00-2-102 : 200

Key Plan:



Location Key:



A AJ 16/03/17 Planning - Updated drawings issue
AJ 21/12/16 Planning Issue
Rev By Date Description

Revisions:

BALLYMORE

ROYAL WHARF - PHASE 3

Level 02 General Arrangement Layout Plan 02

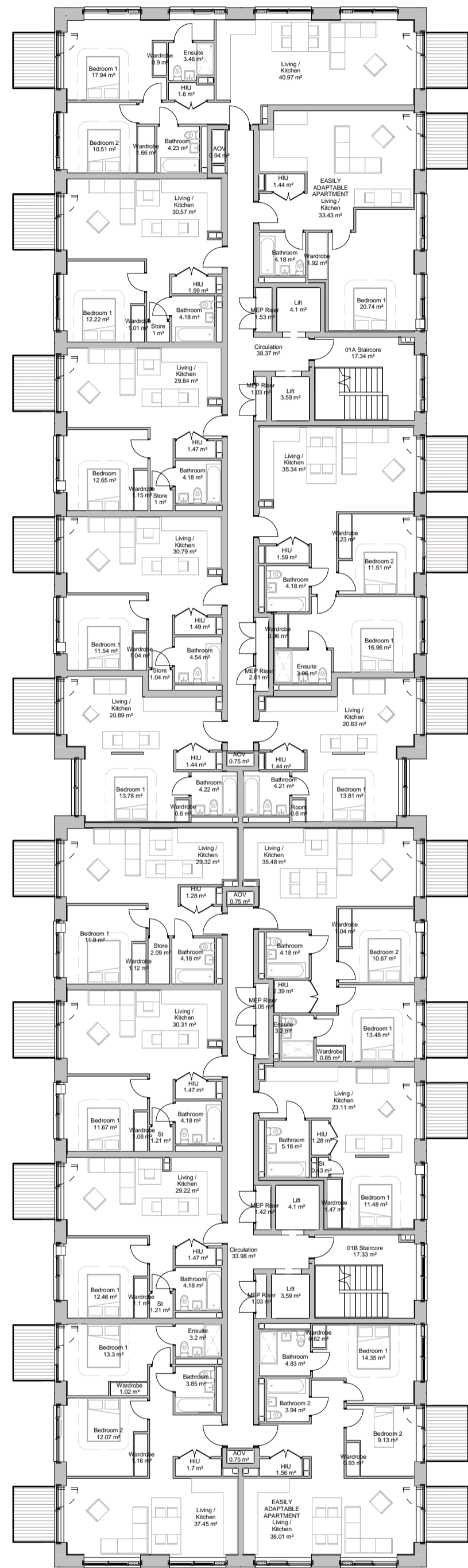
TODD ARCHITECTS
20 TROTTER ROAD,
SLOUGH, BERKSHIRE,
SL5 7JG, UK
E: INFO@TODDARCH.CO.UK
W: WWW.TODDARCH.CO.UK



Drawing No: 16088-TA-P-24.00-2-102 A

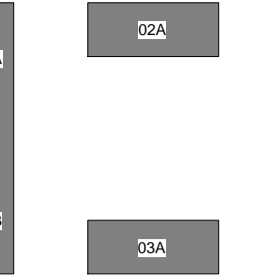
Project No:	Scale:	Date:
16088	1 : 200	12/20/16
Plot:	Checked:	Scale:
24	AJ	WJP

DISCLAIMER: TODD ARCHITECTS CONFIRMS THAT RECIPIENTS CAN RELY ON APPROVED DOCUMENTS ONLY FOR INFORMATION PURPOSES. TODD ARCHITECTS DOES NOT WARRANT THE ACCURACY OF INFORMATION PROVIDED IN THIS DOCUMENT. RECIPIENTS SHALL BE RESPONSIBLE FOR VERIFYING THE ACCURACY OF INFORMATION PROVIDED IN THIS DOCUMENT. TODD ARCHITECTS SHALL NOT BE LIABLE FOR ANY LOSS OR DAMAGE, INCLUDING REASONABLE ATTORNEY'S FEES, ARISING OUT OF THE USE OF THIS DOCUMENT. TODD ARCHITECTS SHALL NOT BE LIABLE FOR ANY LOSS OR DAMAGE, INCLUDING REASONABLE ATTORNEY'S FEES, ARISING OUT OF THE USE OF THIS DOCUMENT. TODD ARCHITECTS SHALL NOT BE LIABLE FOR ANY LOSS OR DAMAGE, INCLUDING REASONABLE ATTORNEY'S FEES, ARISING OUT OF THE USE OF THIS DOCUMENT.

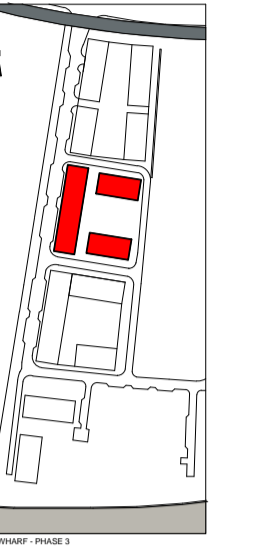


1 THIRD FLOOR PLAN
16088-TA-P-24.00-2-103 : 200

Key Plan:



Location Key:



A AJ 16/03/17 Planning - Updated drawings issue
 - AJ 23/12/16 Planning Issue

Rev	By	Date	Description

Revisions:

BALLYMORE

Project:

ROYAL WHARF - PHASE 3

Drawing Title:

Level 03 General Arrangement Layout Plan 03

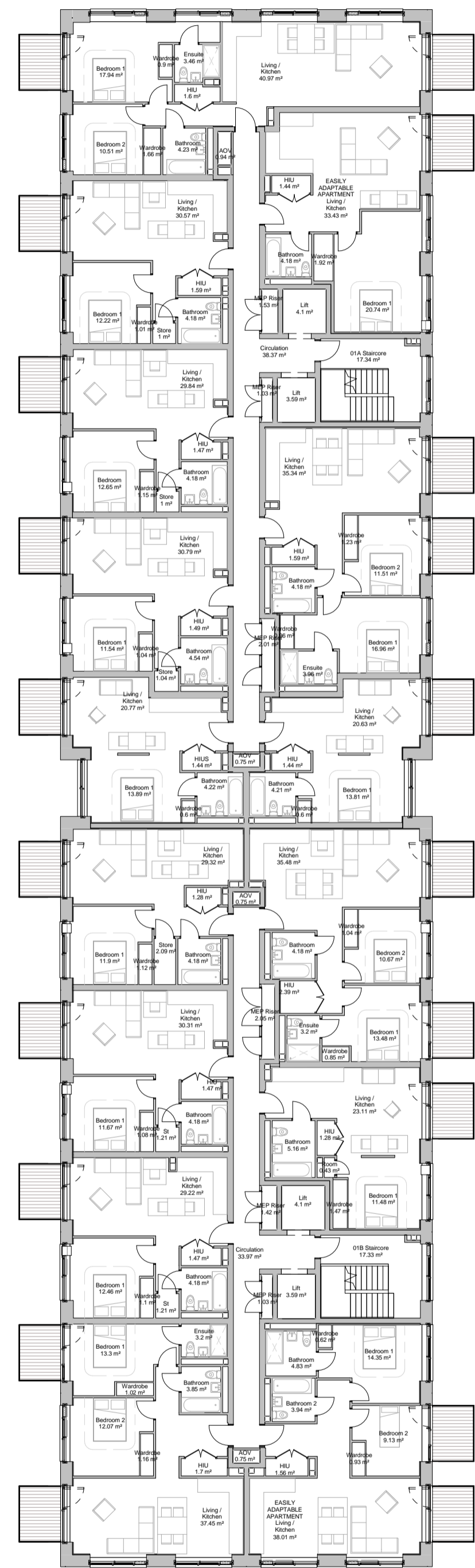
TODD ARCHITECTS
 302 TROCKYTHORP ROAD,
 BUCKLEIGH, BIRMINGHAM,
 B37 7YU
 F: +44 (0)121 709 1234
 E: INFO@TODDARCH.CO.UK
 W: WWW.TODDARCH.CO.UK



Drawing No: 16088-TA-P-24.00-2-103
 Revision: A

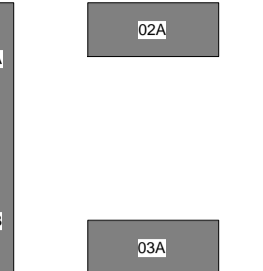
Project No:	Scale:	Date:
16088	1 : 200	12/21/16
Plot:	Checked:	Scale:
24	AJ	WJP

DISCLAIMER: TODD ARCHITECTS CONFIRM THAT RECIPIENTS CAN RELY ON APPROVED DOCUMENTS FOR INFORMATION ON THE PROJECT. TODD ARCHITECTS ACCEPTS NO LIABILITY FOR THE ACCURACY OF INFORMATION PROVIDED BY OTHERS. RECIPIENTS SHOULD VERIFY ALL INFORMATION AND CONSULT WITH TODD ARCHITECTS FOR ANY CHANGES TO THE PROJECT. TODD ARCHITECTS ACCEPTS NO LIABILITY FOR THE ACCURACY OF INFORMATION PROVIDED BY OTHERS. RECIPIENTS SHOULD VERIFY ALL INFORMATION AND CONSULT WITH TODD ARCHITECTS FOR ANY CHANGES TO THE PROJECT. TODD ARCHITECTS ACCEPTS NO LIABILITY FOR THE ACCURACY OF INFORMATION PROVIDED BY OTHERS. RECIPIENTS SHOULD VERIFY ALL INFORMATION AND CONSULT WITH TODD ARCHITECTS FOR ANY CHANGES TO THE PROJECT.

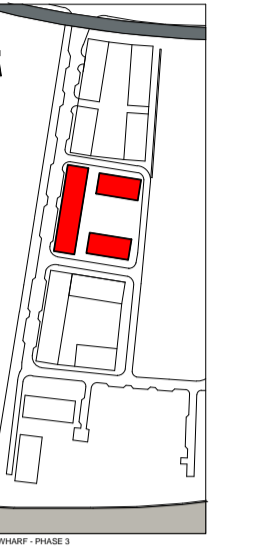


1 FOURTH FLOOR PLAN
16088-TA-P-24.00-2-104 : 200

Key Plan:



Location Key:



Rev	By	Date	Description
A	AJ	16/03/17	Planning - Updated drawings issue
-	AJ	23/12/16	Planning Issue

Revisions:

BALLYMORE

Project:

ROYAL WHARF - PHASE 3

Drawing Title:

Level 04 General Arrangement Layout Plan 04

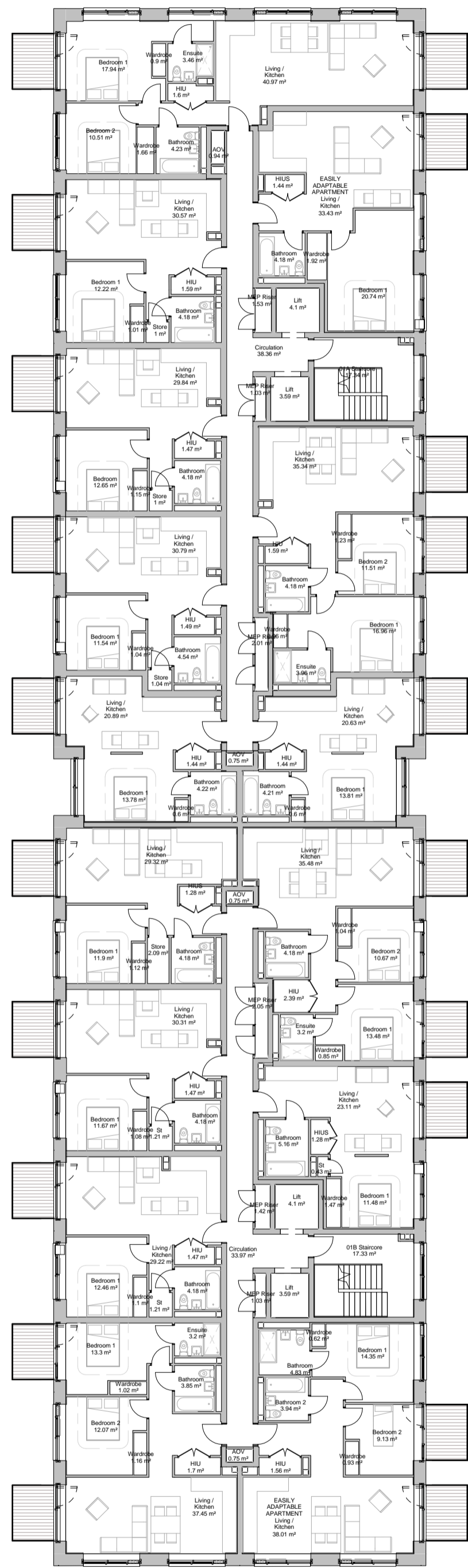
TODD ARCHITECTS
202 TOOKYARD ROAD,
SLOANES ROAD,
BRISTOL, BS1 6BA,
ENGLAND
T: +44 (0)1274 353939
E: INFO@TODDARCH.CO.UK
W: WWW.TODDARCH.CO.UK



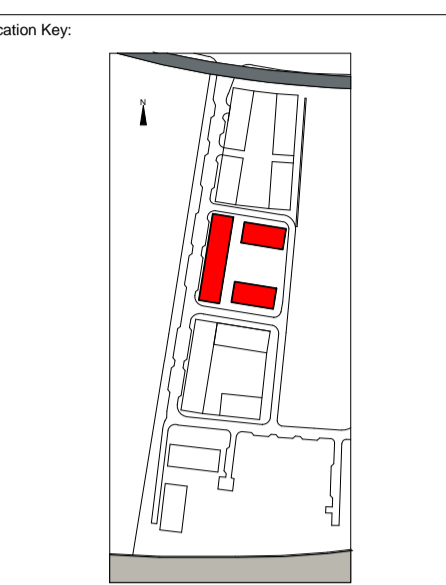
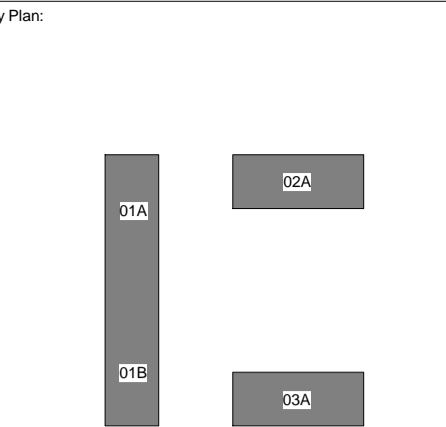
Drawing No: 16088-TA-P-24.00-2-104 Revision: A

Project No:	Scale:	Date:
16088	1 : 200	12/20/16
Plot:	Checked:	Scale:
24	AJ	WJP

DISCLAIMER: TODD ARCHITECTS CONFIRM THAT RECIPIENTS CAN RELY ON APPROVED DOCUMENTS FOR INFORMATION AND ACTION. TODD ARCHITECTS ACCEPTS NO LIABILITY FOR THE ACCURACY OF INFORMATION PROVIDED BY OTHERS. RECIPIENTS SHOULD VERIFY THE ACCURACY OF INFORMATION PROVIDED BY OTHERS. TODD ARCHITECTS ACCEPTS NO LIABILITY FOR THE ACCURACY OF INFORMATION PROVIDED BY OTHERS. RECIPIENTS SHOULD VERIFY THE ACCURACY OF INFORMATION PROVIDED BY OTHERS. TODD ARCHITECTS ACCEPTS NO LIABILITY FOR THE ACCURACY OF INFORMATION PROVIDED BY OTHERS. RECIPIENTS SHOULD VERIFY THE ACCURACY OF INFORMATION PROVIDED BY OTHERS.



1 FIFTH FLOOR PLAN
16088-TA-P-24.00-2-105 : 200



Key Plan:

Location Key:

Rev	By	Date	Description
A	AJ	16/03/17	Planning - Updated drawings issue
-	AJ	23/12/16	Planning Issue

Revisions:

BALLYMORE

ROYAL WHARF - PHASE 3

Level 05 General Arrangement Layout Plan 05

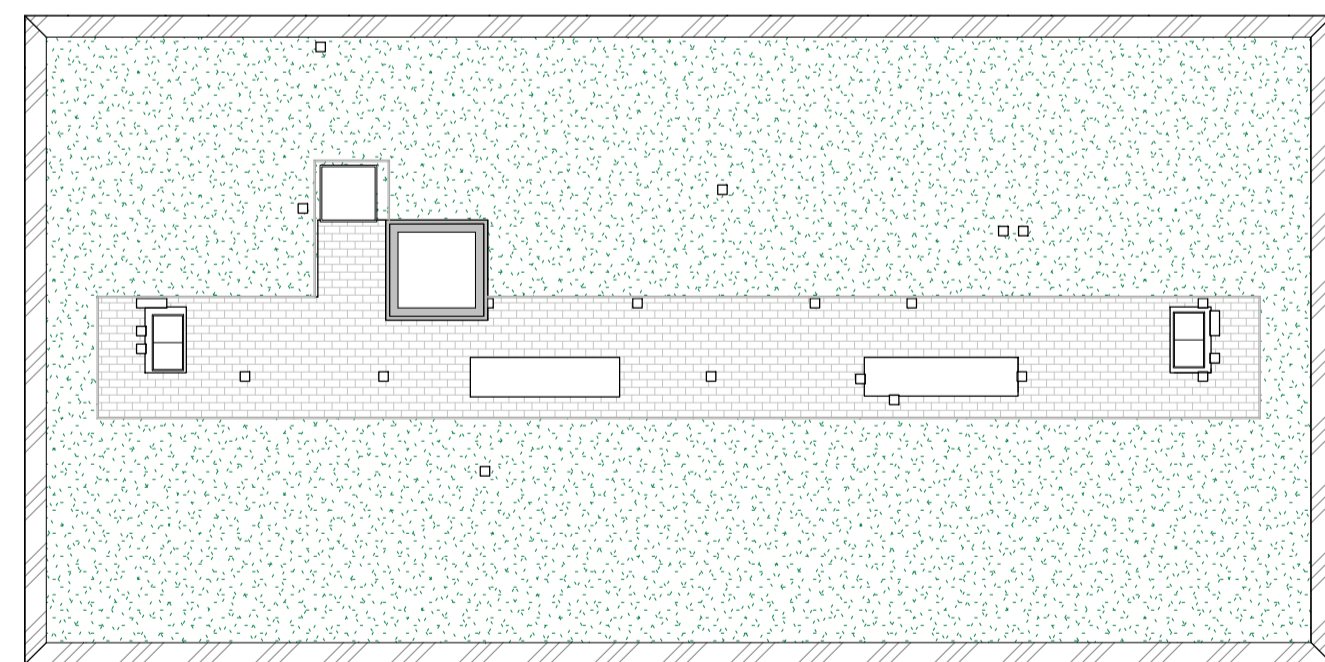
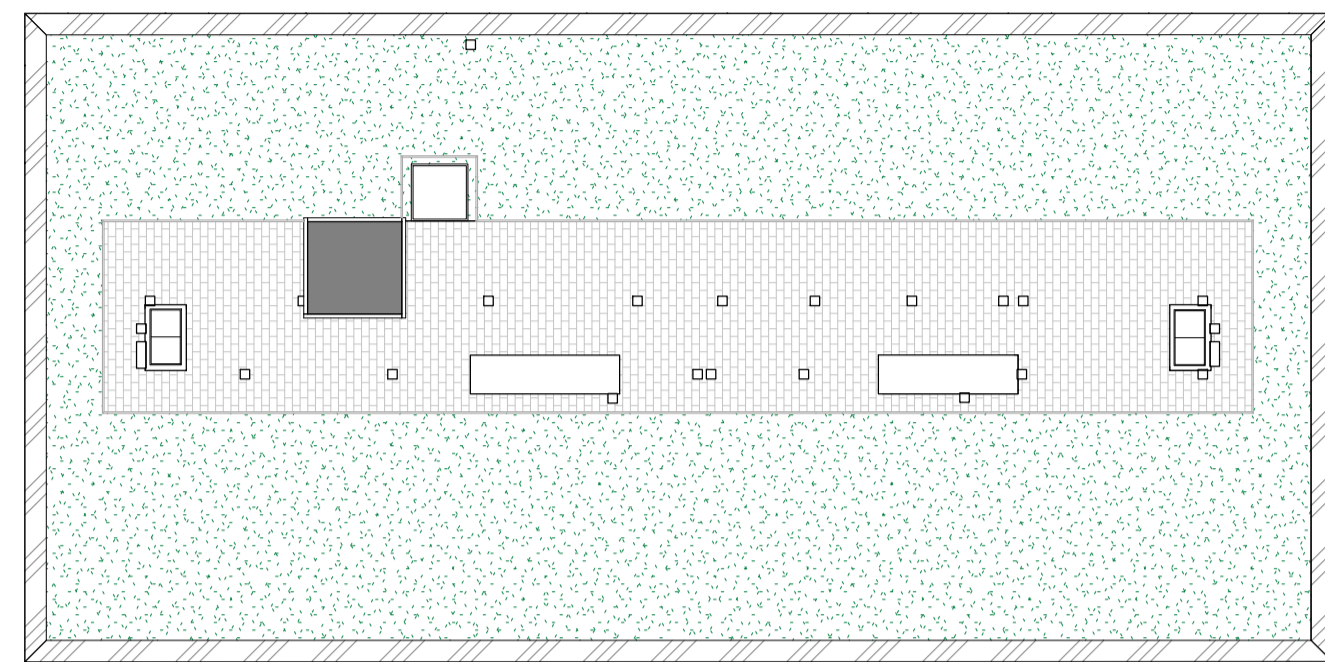
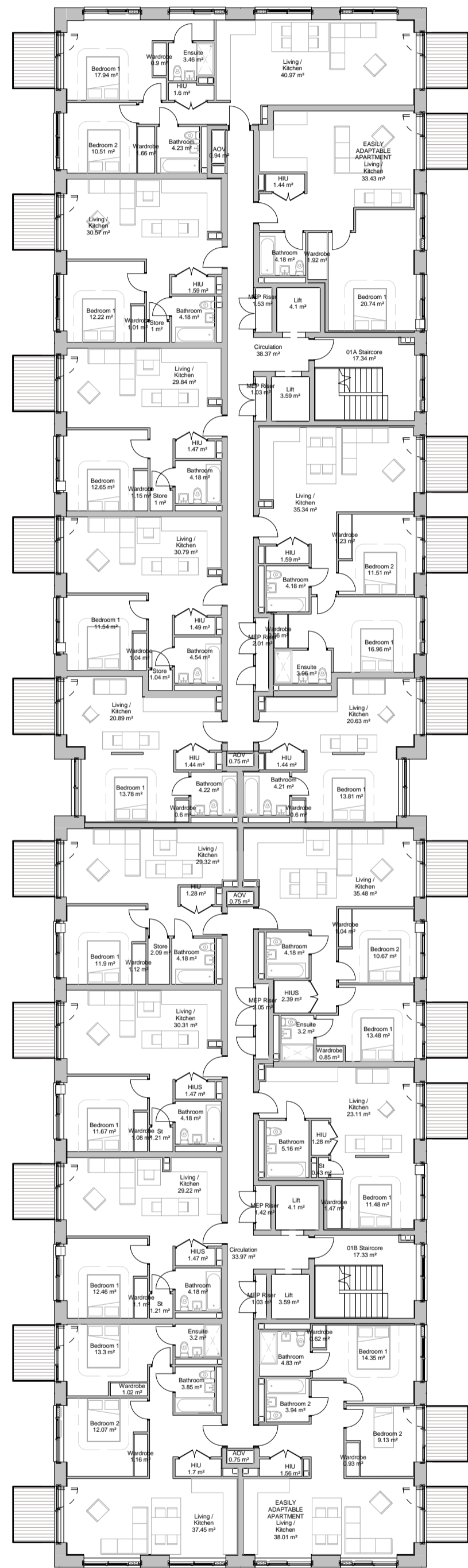
TODD ARCHITECTS
302 TOTTENHAM ROAD
SUNDERLAND, SUNDERS
SR1 1LH
F: +44 (0)191 583 5353
E: INFO@TODDARCH.CO.UK
W: WWW.TODDARCH.CO.UK



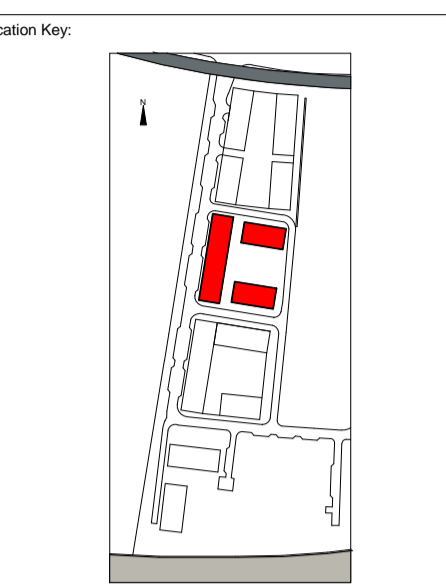
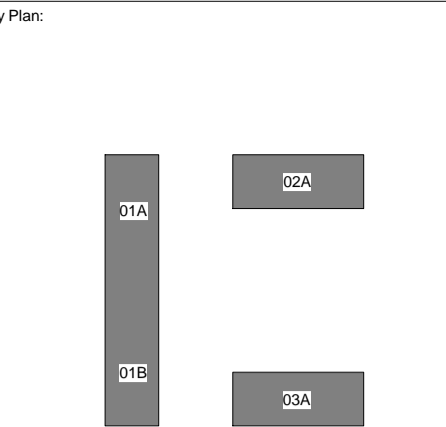
Drawing No: **16088-TA-P-24.00-2-105** Revision: **A**

Project No:	Scale:	Date:
16088	1 : 200	12/20/16
Plot:	Checked:	Scale:
24	AJ	WIP

DISCLAIMER: TODD ARCHITECTS CONFIRM THAT RECIPIENTS CAN RELY ON APPROVED DOCUMENTS FOR INFORMATION ONLY. TODD ARCHITECTS DOES NOT WARRANT THE ACCURACY OF INFORMATION PROVIDED IN THESE DOCUMENTS. RECIPIENTS SHOULD VERIFY THE ACCURACY OF INFORMATION PROVIDED IN THESE DOCUMENTS. TODD ARCHITECTS ACCEPTS NO LIABILITY FOR ANY LOSS OR DAMAGE ARISING AS A RESULT OF RELIANCE ON THESE DOCUMENTS. RECIPIENTS SHOULD VERIFY THE ACCURACY OF INFORMATION PROVIDED IN THESE DOCUMENTS. TODD ARCHITECTS ACCEPTS NO LIABILITY FOR ANY LOSS OR DAMAGE ARISING AS A RESULT OF RELIANCE ON THESE DOCUMENTS.



1 SIXTH FLOOR PLAN
16088-TA-P-24.00-2-106 : 200



Revisions:

Rev	By	Date	Description
A	AJ	16/03/17	Planning - Updated drawings issue
-	AJ	23/12/16	Planning Issue

BALLYMORE

ROYAL WHARF - PHASE 3

Level 06 General Arrangement Layout Plan 06

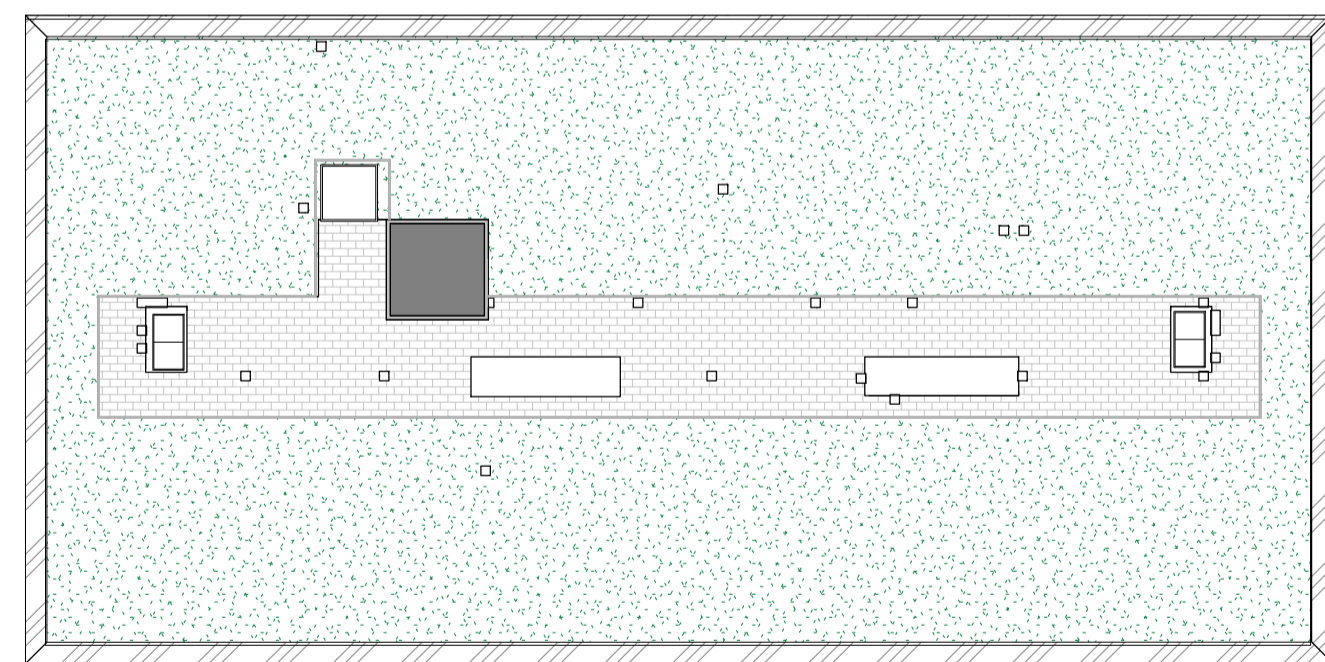
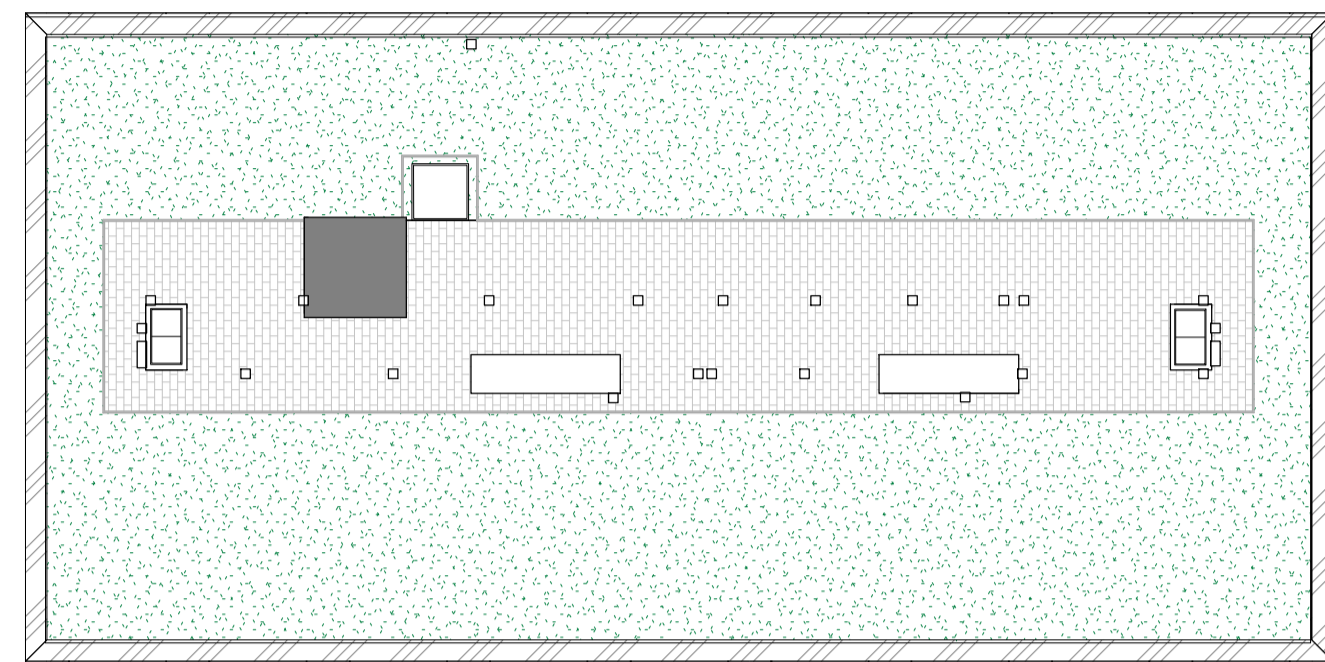
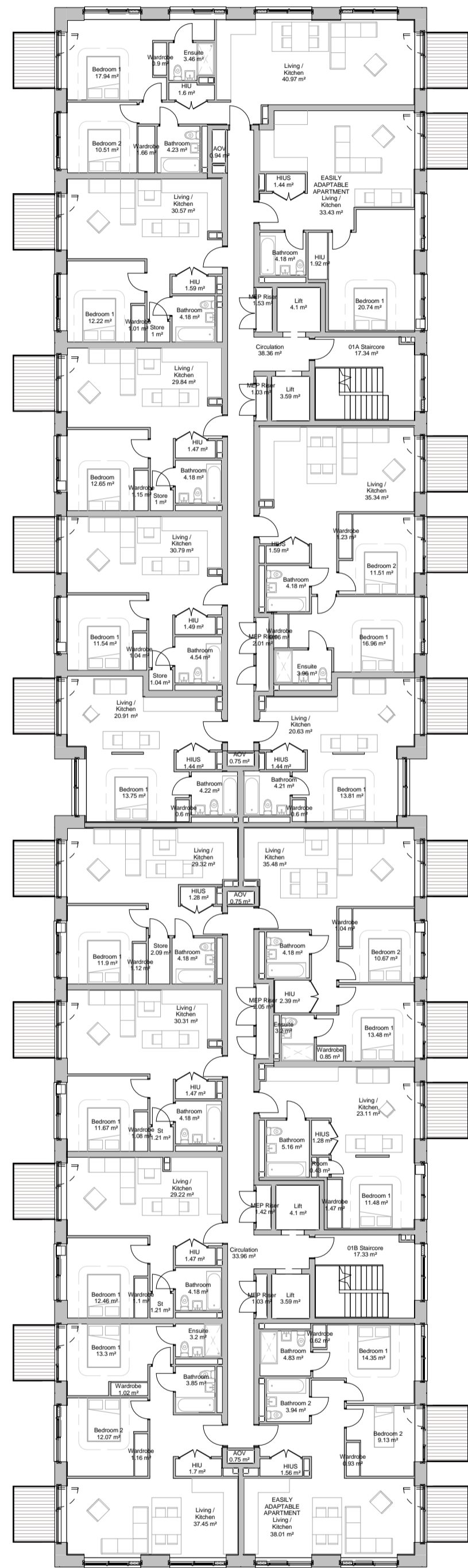
TODD ARCHITECTS
205 TOTTENHAM ROAD,
SUNDERLAND, SUNDERS
TYNE AND WEAR
NE1 6TJ
E: INFO@TODDARCH.CO.UK
W: WWW.TODDARCH.CO.UK



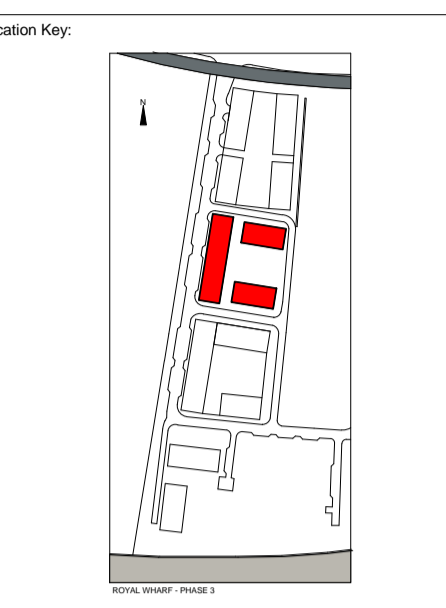
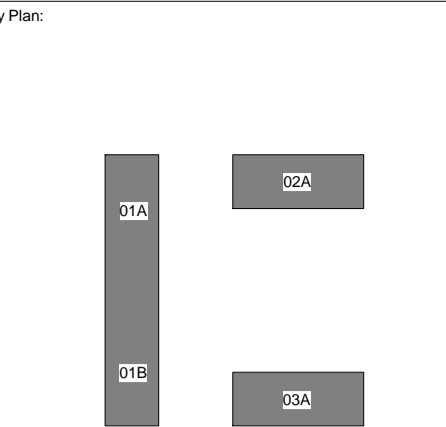
Drawing No: **16088-TA-P-24.00-2-106** Revision: **A**

Project No: 16088	Scale: 1 : 200	Date: 12/20/16
Plot: 24	Checked: AJ	Scale: WIP

DISCLAIMER: TODD ARCHITECTS CONFIRM THAT RECIPIENTS CAN RELY ON APPROVED DOCUMENTS FOR INFORMATION PURPOSES ONLY. TODD ARCHITECTS ACCEPT NO LIABILITY FOR ANY LOSS OR DAMAGE ARISING AS A RESULT OF RELIANCE ON THE INFORMATION PROVIDED IN ANY UNCONTROLLED DOCUMENT FORMATS. RECIPIENTS SHOULD VERIFY THE ACCURACY OF INFORMATION PROVIDED IN ANY UNCONTROLLED DOCUMENT FORMATS. TODD ARCHITECTS ACCEPT NO LIABILITY FOR ANY LOSS OR DAMAGE ARISING AS A RESULT OF RELIANCE ON THE INFORMATION PROVIDED IN ANY UNCONTROLLED DOCUMENT FORMATS. RECIPIENTS SHOULD VERIFY THE ACCURACY OF INFORMATION PROVIDED IN ANY UNCONTROLLED DOCUMENT FORMATS. TODD ARCHITECTS ACCEPT NO LIABILITY FOR ANY LOSS OR DAMAGE ARISING AS A RESULT OF RELIANCE ON THE INFORMATION PROVIDED IN ANY UNCONTROLLED DOCUMENT FORMATS. RECIPIENTS SHOULD VERIFY THE ACCURACY OF INFORMATION PROVIDED IN ANY UNCONTROLLED DOCUMENT FORMATS.



1 SEVENTH FLOOR PLAN
16088-TA-P-24.00-2-107 : 200



Revisions:

Rev	By	Date	Description
A	AJ	16/03/17	Planning - Updated drawings issue
-	AJ	23/12/16	Planning Issue

BALLYMORE

ROYAL WHARF - PHASE 3

Level 07 General Arrangement Layout Plan 07

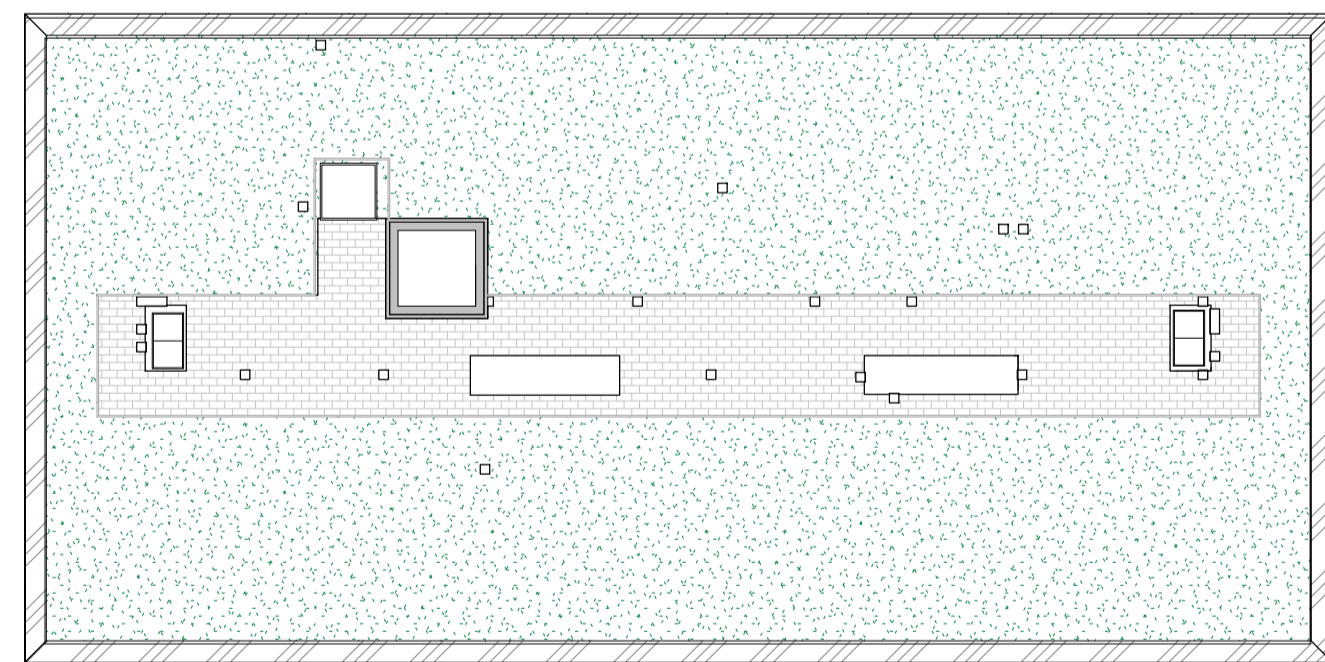
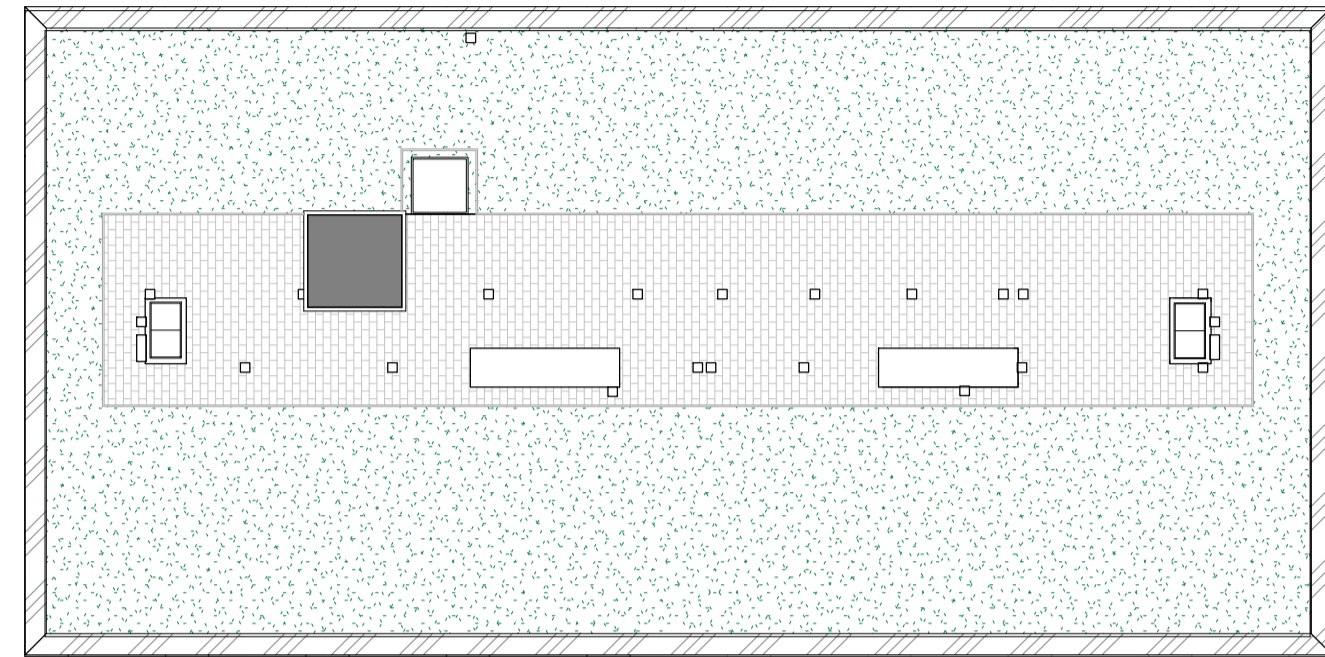
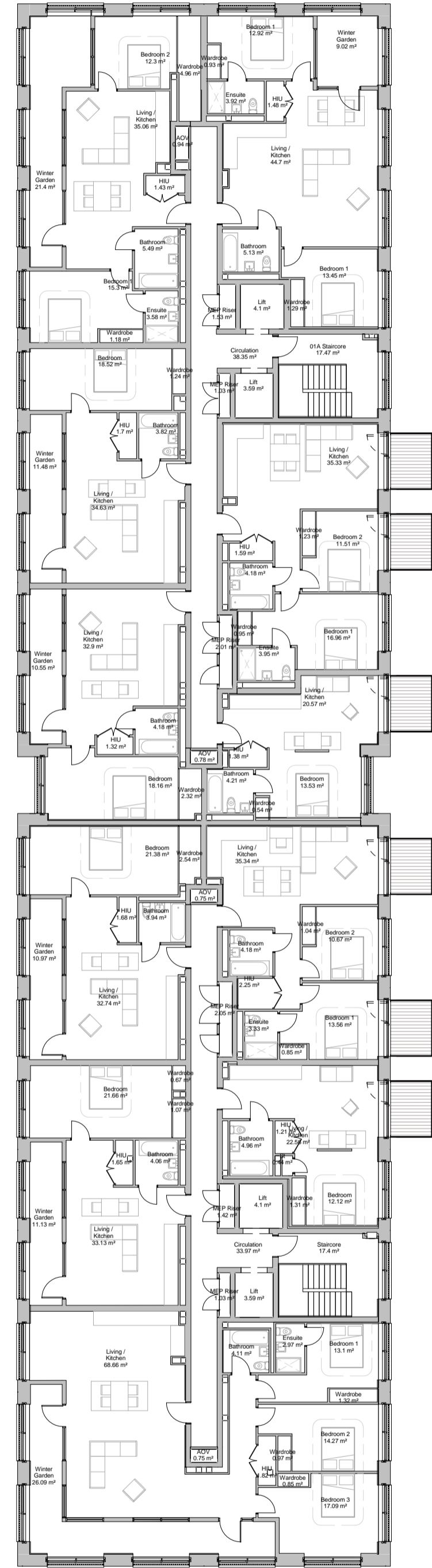
TODD ARCHITECTS
3RD FLOOR TRINITY HOUSE,
6 GLEBE ROAD,
BIRMINGHAM B15 2JF
T: 0121 625 6000
F: 0121 625 6001
E: INFO@TODDARCH.CO.UK
W: WWW.TODDARCH.CO.UK



Drawing No: **16088-TA-P-24.00-2-107** Revision: **A**

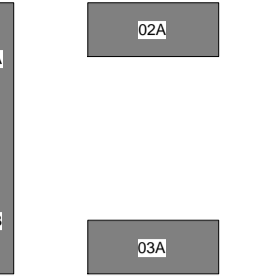
Project No: 16088	Scale: 1 : 200	Date: 12/20/16
Plot: 24	Checked: AJ	Status: WIP

DISCLAIMER: TODD ARCHITECTS CONFIRM THAT RECIPIENTS CAN RELY ON APPROVED DOCUMENTS FOR INFORMATION PURPOSES ONLY. TODD ARCHITECTS ACCEPTS NO LIABILITY FOR ANY LOSS OR DAMAGE ARISING AS A RESULT OF RELIANCE ON THE INFORMATION PROVIDED IN ANY UNCONTROLLED DOCUMENT FORMATS RELEASED UPON WHICH THE ACCURACY OF INFORMATION IS NOT GUARANTEED. THE INFORMATION IS PROVIDED AS IS AND SHOULD NOT BE USED FOR ANY OTHER PURPOSES WITHOUT THE EXPRESS WRITTEN PERMISSION OF TODD ARCHITECTS. UNCONTROLLED DOCUMENT FORMATS INCLUDE: COMPUTER GENERATED DRAWINGS, PRINTED DRAWINGS, PHOTOCOPIES, SCANS, AND ANY OTHER REPRODUCED FORMATS. UNCONTROLLED DOCUMENT FORMATS SHOULD NOT BE USED FOR ANY OTHER PURPOSES WITHOUT THE EXPRESS WRITTEN PERMISSION OF TODD ARCHITECTS.

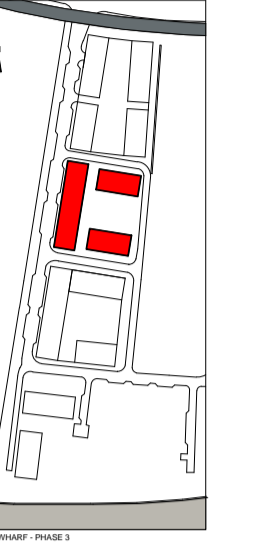


1 EIGHTH FLOOR PLAN
16088-TA-P-24.00-2-108 ; 200

Key Plan:



Location Key:



Rev	By	Date	Description
A	AJ	16/03/17	Planning - Updated drawings issue
-	AJ	23/12/16	Planning Issue

Revisions:

BALLYMORE

Project:

ROYAL WHARF - PHASE 3

Drawing Title:

Level 08 General Arrangement Layout Plan 08

TODD ARCHITECTS
205 TOTTENHAM ROAD,
SUNDERLAND, SR1 3LJ
0191 276 0600
E: INFO@TODDARCH.CO.UK
W: WWW.TODDARCH.CO.UK



Drawing No: **16088-TA-P-24.00-2-108** Revision: **A**

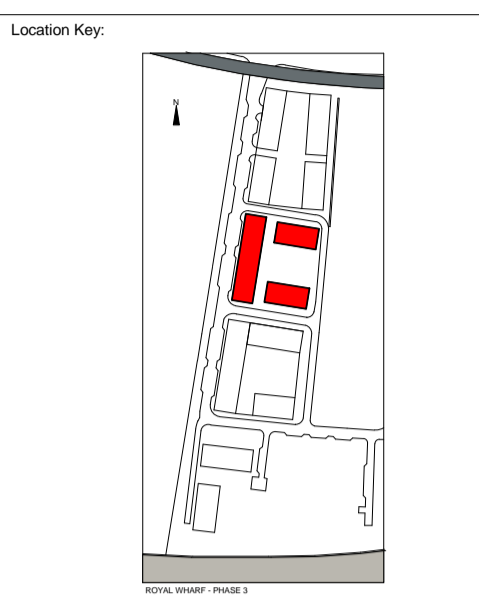
Project No:	Scale:	Date:
16088	1 : 200	12/20/16
Plot:	Checked:	Scale:
24	AJ	WIP

DISCLAIMER: TODD ARCHITECTS CONFIRM THAT RECIPIENTS CAN RELY UPON APPROVED DOCUMENTS FOR INFORMATION PURPOSES ONLY. TODD ARCHITECTS DOES NOT WARRANT THE ACCURACY OF INFORMATION PROVIDED BY THIRD PARTIES OR THE COMPLETION OF ANY WORK OR THE RESULTS OF ANY WORK. RECIPIENTS SHOULD VERIFY THE ACCURACY OF INFORMATION PROVIDED BY THIRD PARTIES AND THE COMPLETION OF ANY WORK OR THE RESULTS OF ANY WORK. TODD ARCHITECTS ACCEPTS NO LIABILITY FOR ANY LOSS OR DAMAGE ARISING AS A RESULT OF RELIANCE ON THE INFORMATION PROVIDED BY THIRD PARTIES OR THE COMPLETION OF ANY WORK OR THE RESULTS OF ANY WORK. TODD ARCHITECTS WILL NOT BE RESPONSIBLE FOR ANY LOSS OR DAMAGE ARISING AS A RESULT OF RELIANCE ON THE INFORMATION PROVIDED BY THIRD PARTIES OR THE COMPLETION OF ANY WORK OR THE RESULTS OF ANY WORK.



1 FIRST FLOOR PLAN
16088-TA-P-24.00-2-101 : 200

Key Plan:



Revisions:

Rev	By	Date	Description
A	AJ	16/03/17	Planning - Updated drawings issue
-	AJ	23/12/16	Planning Issue

BALLYMORE

Project:

ROYAL WHARF - PHASE 3

Drawing Title:

Level 01 General Arrangement Layout Plan 01

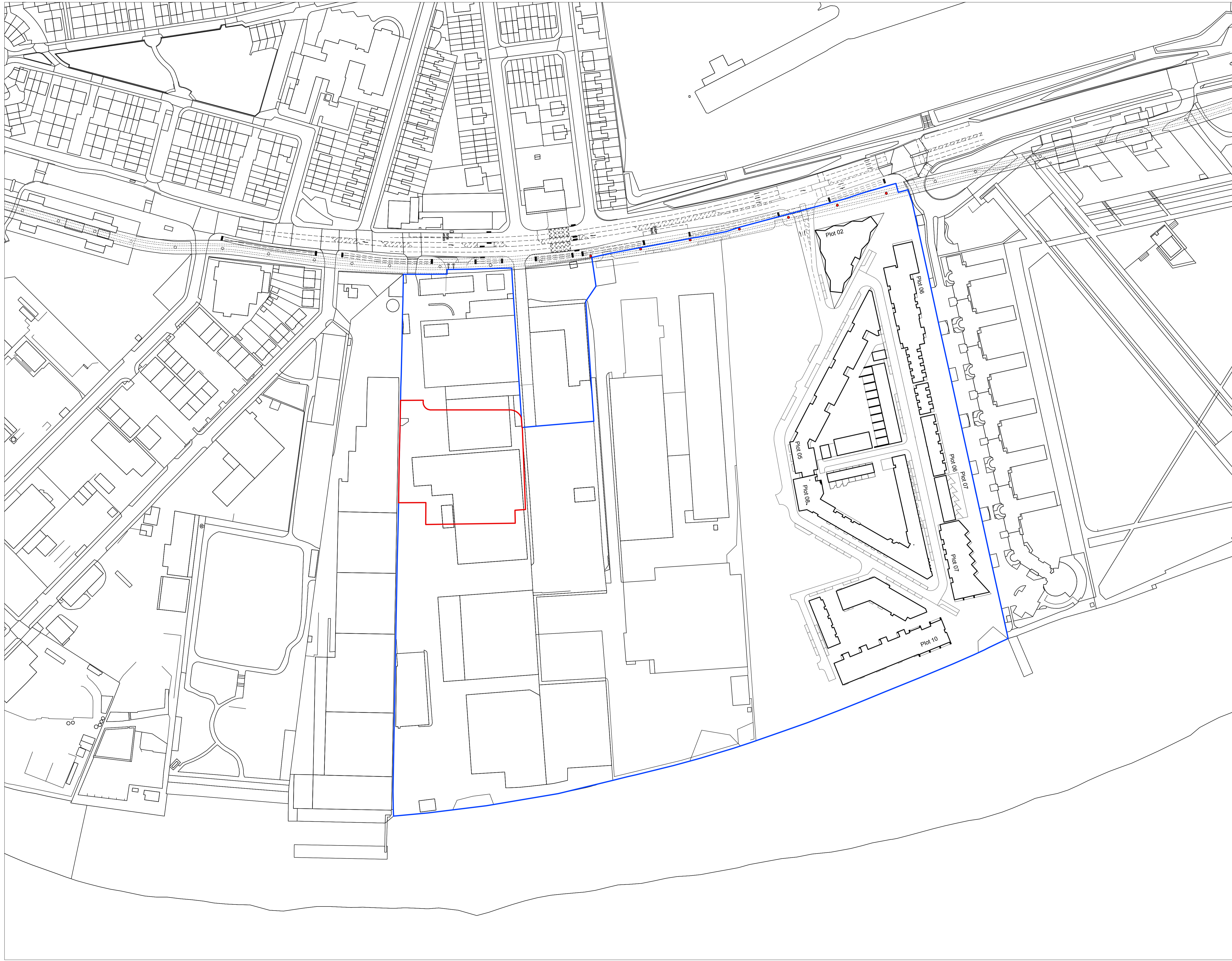
TODD ARCHITECTS
202 TOTTENHAM ROAD,
SUNDERLAND, SUNDERS
SR1 1LH, ENGLAND
T: +44 (0)191 572 2222
E: INFO@TODDARCH.CO.UK
W: WWW.TODDARCH.CO.UK

TODD

Drawing No: **16088-TA-P-24.00-2-101** Revision: **A**

Project No:	Scale:	Date:
16088	1 : 200	12/20/16
Plot:	Checked:	Scale:
24	AJ	WIP



DISCLAIMER: TODD ARCHITECTS CONFIRM THAT RECIPIENTS CAN RELY ON APPROVED DOCUMENTS FOR INFORMATION ONLY. TODD ARCHITECTS DOES NOT WARRANT THE ACCURACY OF INFORMATION PROVIDED IN ANY UNCONTROLLED DOCUMENT FORMATS WHICH MAY BE A RESULT OF REPRODUCTION OR TRANSMISSION OF INFORMATION. TODD ARCHITECTS ACCEPTS NO LIABILITY FOR ANY LOSS OR DAMAGE ARISING AS A RESULT OF RELIANCE ON UNCONTROLLED DOCUMENTS FOR INFORMATION PURPOSES ONLY. TODD ARCHITECTS ACCEPTS NO LIABILITY FOR ANY LOSS OR DAMAGE ARISING AS A RESULT OF RELIANCE ON UNCONTROLLED DOCUMENTS FOR INFORMATION PURPOSES ONLY. TODD ARCHITECTS ACCEPTS NO LIABILITY FOR ANY LOSS OR DAMAGE ARISING AS A RESULT OF RELIANCE ON UNCONTROLLED DOCUMENTS FOR INFORMATION PURPOSES ONLY.

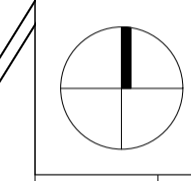


NOTES:
 DIMENSIONS NOT TO BE SCALED FROM THIS DRAWING.
 CONTRACTORS TO NOTIFY ARCHITECTS OF SITE
 VARIATIONS AFFECTING INFORMATION ON THIS
 DRAWING. THIS DRAWING IS COPYRIGHT OF GLENN
 HOWELLS ARCHITECTS.

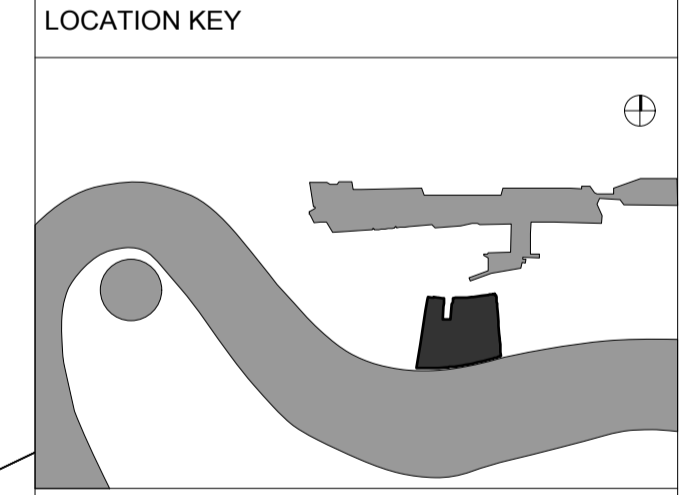
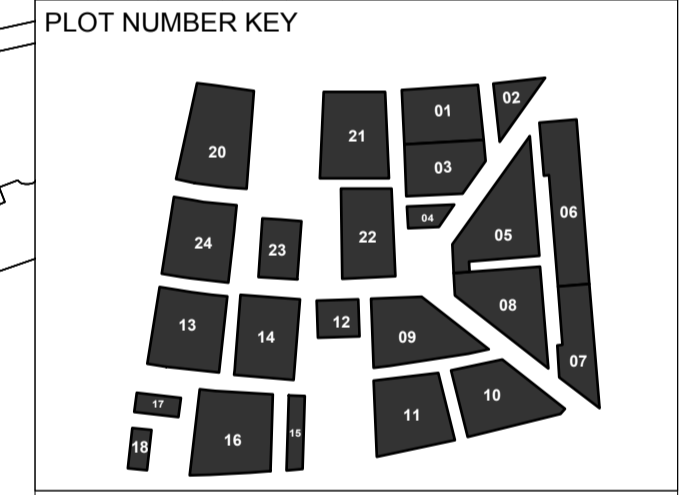
GLENN HOWELLS ARCHITECTS TAKE NO
 RESPONSIBILITY FOR THE LOCATION OF LEGAL
 BOUNDARIES INDICATED ON THIS DRAWING AND
 ADVISE A SEPARATE DRAWING BE COMPLETED BY A
 SPECIALIST SURVEYOR IN ORDER TO ESTABLISH
 EXACT BOUNDARIES.

KEY

	Land within the ownership of the Applicant
	Application Boundary



Date	Rev	By	Details
151002	/	AC	Planning Application Submission



PLANNING

GLENN HOWELLS ARCHITECTS
 321 Bradford St, Digbeth, Birmingham, B5 6ET
 Tel. 0121 666 7640 F. 0121 666 7641
 mail@glennhowells.co.uk

Project
 Royal Wharf

Client
 Oxley Wharf

Drawing Title
 Application Boundary Plot 24

Date	Scale	Checked
Sept 2015	1:1250@A1 1:2500@A3	SH
Project Ref.	Drawing No.	Revision
2026	A-L-24-800	/

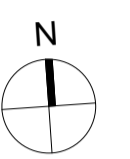
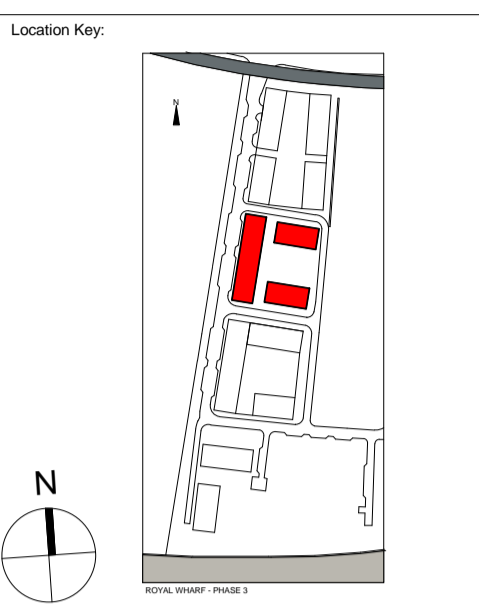
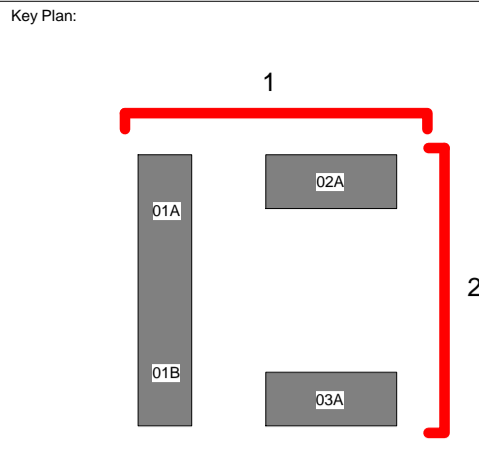
1. Brickwork - Marziale
2. Recessed Brickwork Marziale
3. Glass Balustrade
4. MVHR Grille within brickwork
5. MVHR grille within aluminium window frame
6. Metal Fence
7. Aluminium window /door frame
8. Aluminium louvred doors
9. PPC RAL 7006
10. Aluminium RAL metal panel incorporated into aluminium window frame
11. Aluminium coping PPC RAL 7006
12. Dry rise inlet box
13. Aluminium curtain walling system
14. PPC RAL 7006
15. Aluminium louvres
16. PPC RAL 7006
17. Entrance canopy
18. Metal Balustrade
19. PPC RAL 7006
20. Lift Overrun



1 North Elevation
16088-TA-P-24.00-2-160 : 200



2 East Elevation
16088-TA-P-24.00-2-160 : 200



A AJ 16/03/17 Planning - Updated drawings issue
AJ 21/12/16 Planning Issue

Rev	By	Date	Description
1	AJ	21/12/16	Planning Issue

BALLYMORE

Project:
ROYAL WHARF - PHASE 3

Drawing Title:
North and East Elevations

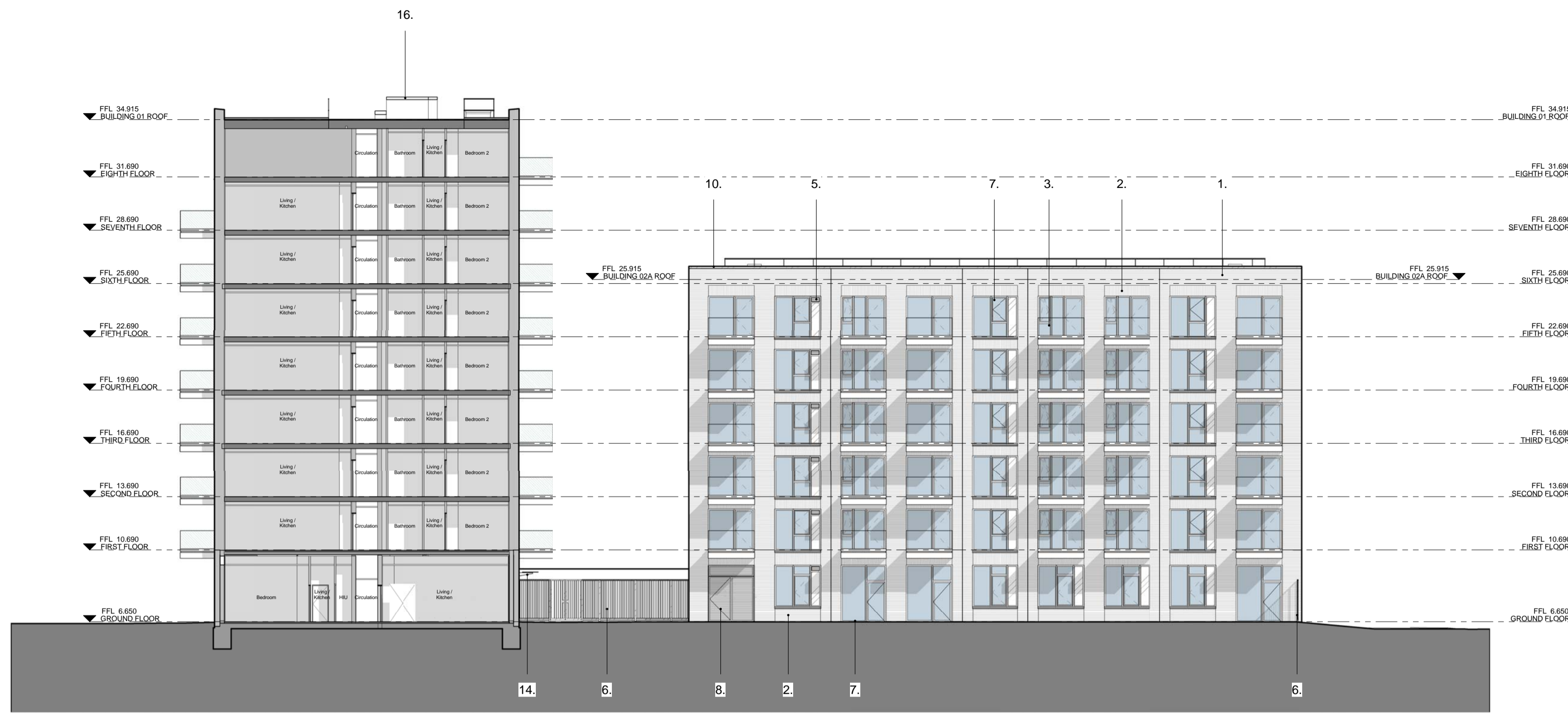
TODD ARCHITECTS
25 TOTTENHAM AVENUE,
6 GLENVIEW ROAD,
BURNLEY, BL7 9JF
F: +44 (0)1253 885333
E: INFO@TODDARCH.CO.UK
W: WWW.TODDARCH.CO.UK



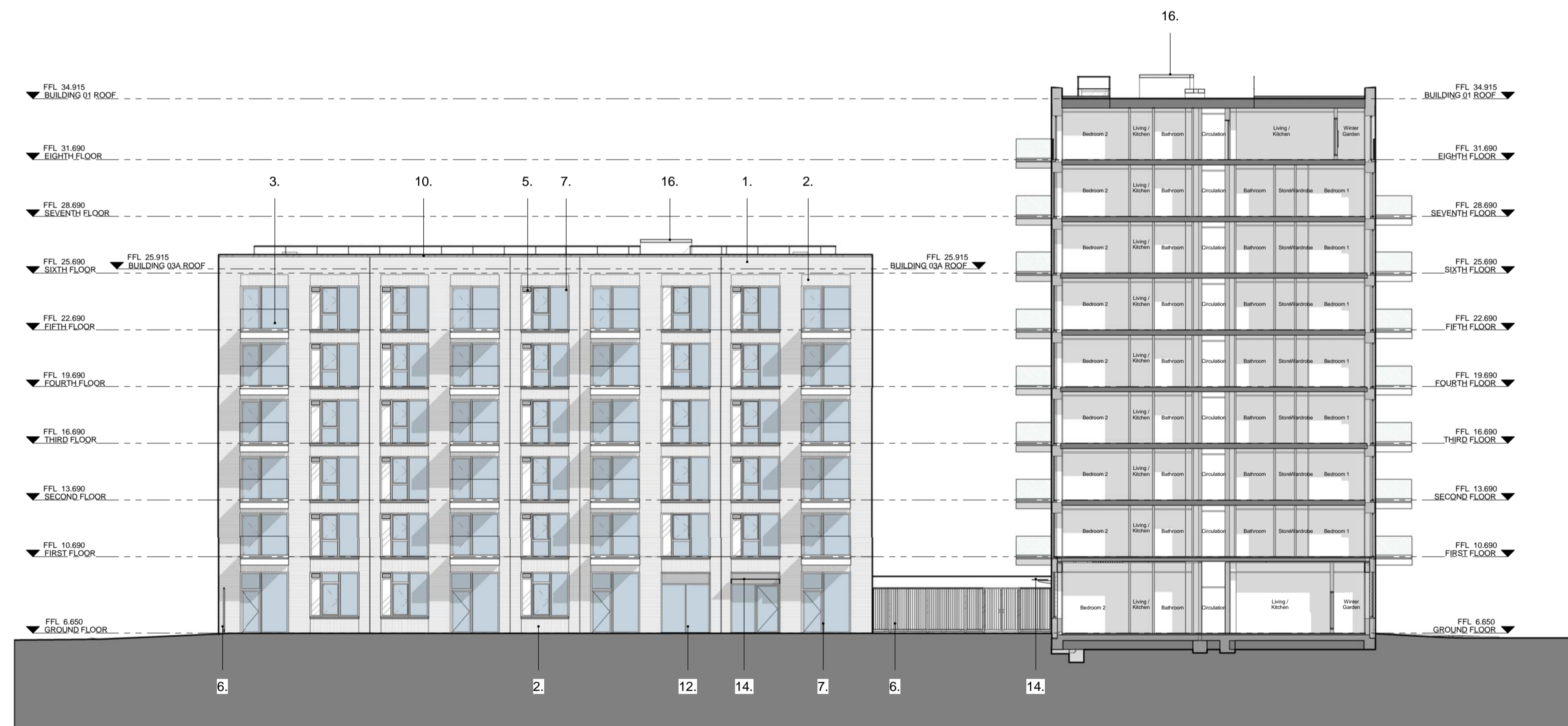
Drawing No: **16088-TA-P-24.00-2-160** Revision: **A**

Project No:	Scale:	Date:
16088	As indicated	12/20/16
Plot:	Checked:	Scale:
24	AJ	WJP

DISCLAIMER: TODD ARCHITECTS CONFIRMS THAT RECIPIENTS CAN RELY ON APPROVED DOCUMENTS FOR INFORMATION ON THE PROJECT. TODD ARCHITECTS DOES NOT WARRANT THE ACCURACY OF INFORMATION PROVIDED TO RECIPIENTS. RECIPIENTS SHOULD VERIFY THE ACCURACY OF INFORMATION PROVIDED TO THEM AND SHOULD CONSULT WITH TODD ARCHITECTS FOR ANY CLARIFICATION OR CORRECTION. TODD ARCHITECTS ACCEPTS NO LIABILITY FOR ANY LOSS OR DAMAGE ARISING AS A RESULT OF RELIANCE ON THE INFORMATION PROVIDED IN THESE DOCUMENTS FOR INFORMATION PURPOSES ONLY. TODD ARCHITECTS WILL NOT BE RESPONSIBLE FOR ANY LOSS OR DAMAGE ARISING AS A RESULT OF RELIANCE ON THE INFORMATION PROVIDED IN THESE DOCUMENTS FOR INFORMATION PURPOSES ONLY.

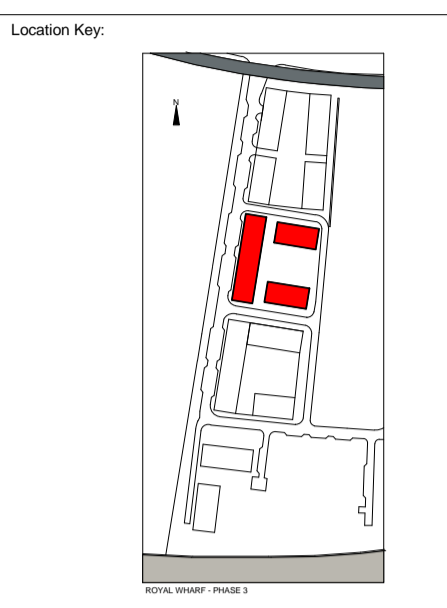
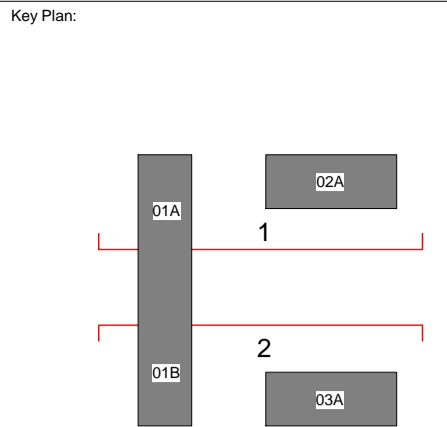


1
Building 02A Courtyard Elevation and 01A Section
16088-TA-P-24.00-2-163 : 200



1. Brickwork - Marziale
2. Recessed Brickwork Marziale
3. Glass Balustrade
4. MVHR Grille within brickwork
5. MVHR grille within aluminium window frame
6. Metal Fence
7. Aluminium window /door frame PPC RAL 7006
8. Aluminium louvred doors PPC RAL 7006
9. PPC RAL 7006 RAL metal panel incorporated into aluminium window frame
10. Aluminium coping PPC RAL 7006
11. Dry rise inlet box
12. Aluminium curtain walling system PPC RAL 7006
13. Aluminium louvres PPC RAL 7006
14. Entrance canopy
15. Metal Balustrade PPC RAL 7006
16. Lift Overrun

2
Building 03A Courtyard Elevation and 01B Section
16088-TA-P-24.00-2-163 : 200



Rev By Date Description
AJ 16/03/17 Planning - Updated drawings issue

BALLYMORE

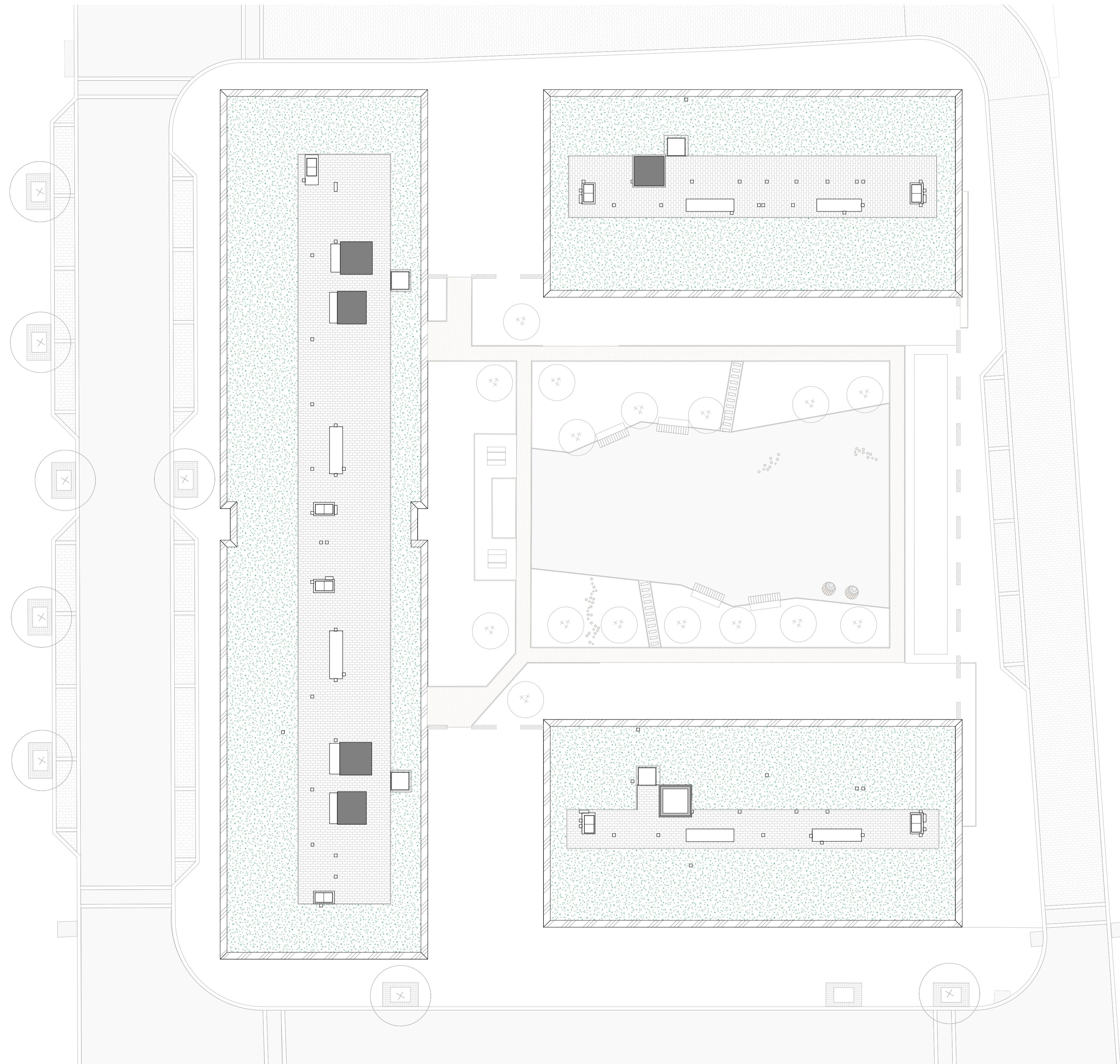
ROYAL WHARF - PHASE 3

North and South Courtyard Elevations

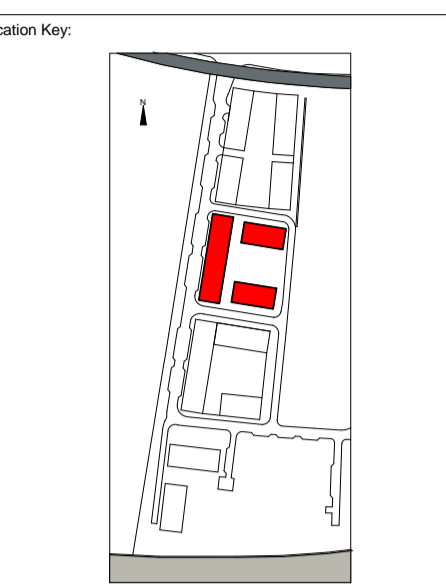
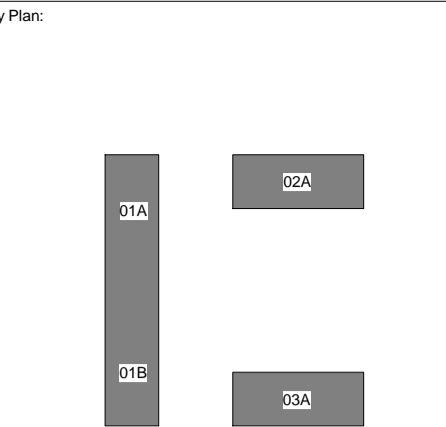
TODD ARCHITECTS
125 TOTTENHAM ROAD,
SOUTHAMPTON, SO9 4NR
T: 0703 060 000
F: 01703 600 000
E: INFO@TODDARCH.CO.UK
W: WWW.TODDARCH.CO.UK

Project No:	Scale:	Date:
16088	As indicated	03/10/17
Plot:	Checked:	Scale:
	WJP	

DISCLAIMER: TODD ARCHITECTS CONFIRMS THAT RECEIPTS CAN ONLY BE USED ON APPROVED DOCUMENTS. TODD ARCHITECTS CONFIRMS THAT RECEIPTS CAN ONLY BE USED ON APPROVED DOCUMENTS. TODD ARCHITECTS CONFIRMS THAT RECEIPTS CAN ONLY BE USED ON APPROVED DOCUMENTS. TODD ARCHITECTS CONFIRMS THAT RECEIPTS CAN ONLY BE USED ON APPROVED DOCUMENTS.



1 ROOF LEVEL PLAN
16088-TA-A-24.00-2-109 : 200



Rev	By	Date	Description
-	AJ	16/03/17	Planning - Updated drawings issue

Revisions:

BALLYMORE

Project:

ROYAL WHARF - PHASE 3

Drawing Title:

Roof Level General Arrangement Layout Plan 09

TODD ARCHITECTS
201 TOTTENHAM ROAD,
SUNDERLAND, DURHAM
SR1 1LH
T: 0191 276 0000
F: 0191 276 0001
W: WWW.TODDARCH.CO.UK

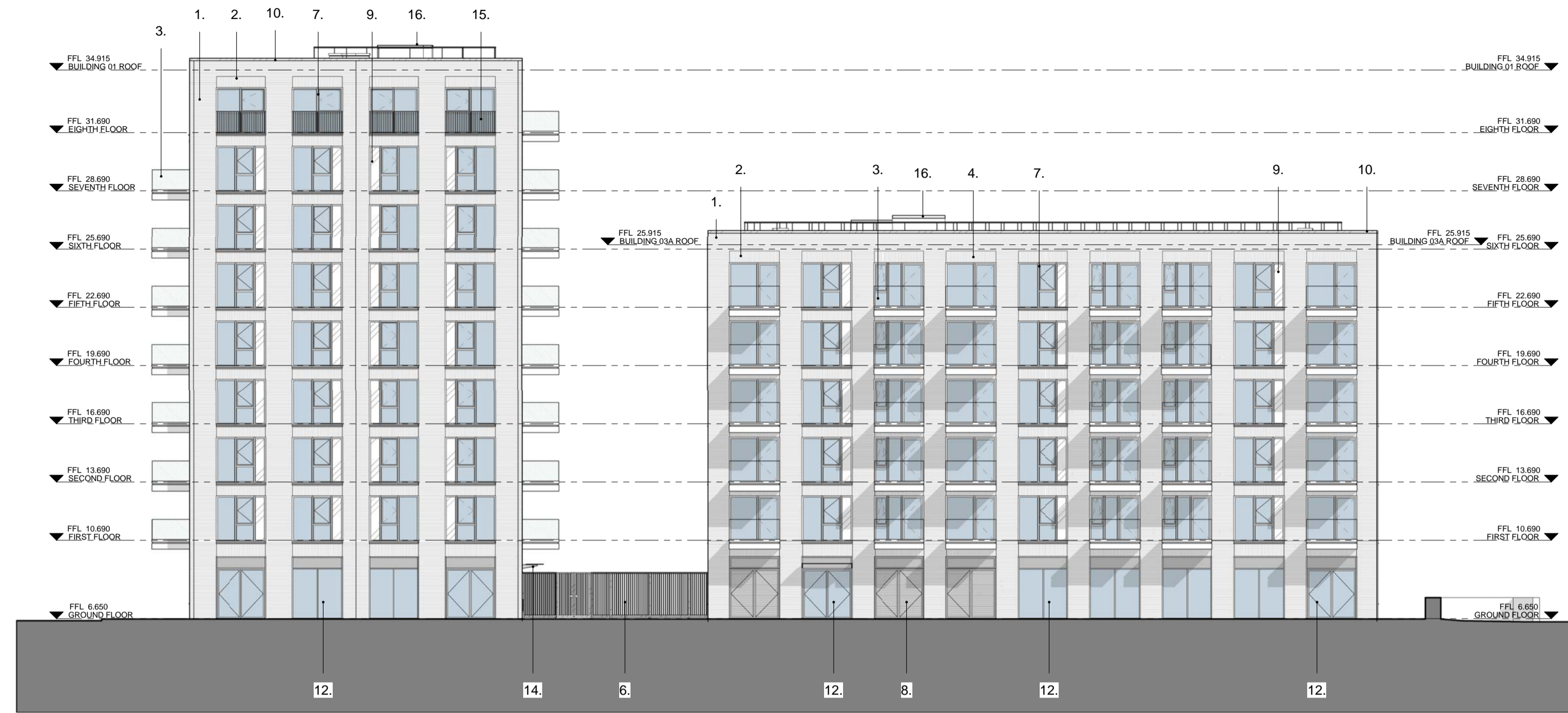


Drawing No: **16088-TA-A-24.00-2-109** Revision: -

Project No:	Scale:	Date:
16088	1 : 200	03/16/17
Plot:	Checked:	Status:
	WJP	

TODD ARCHITECTS CONFIRMS THAT REVISIONS CALLED OUT BY OR APPROVED BY THE ARCHITECT ARE THE ONLY REVISIONS TO BE MADE TO THIS DRAWING. ANY OTHER REVISIONS WILL BE AT THE RISK OF THE RECIPIENT. TODD ARCHITECTS ACCEPTS NO LIABILITY FOR ANY LOSS OR DAMAGE ARISING AS A RESULT OF RELIANCE ON THIS DRAWING. THE ARCHITECT'S LIABILITY IS LIMITED TO THE DESIGN AND CONSTRUCTION OF THE BUILDING WORKS ONLY. TODD ARCHITECTS IS NOT RESPONSIBLE FOR ANY LOSS OR DAMAGE ARISING AS A RESULT OF RELIANCE ON THIS DRAWING. THE ARCHITECT'S LIABILITY IS LIMITED TO THE DESIGN AND CONSTRUCTION OF THE BUILDING WORKS ONLY.

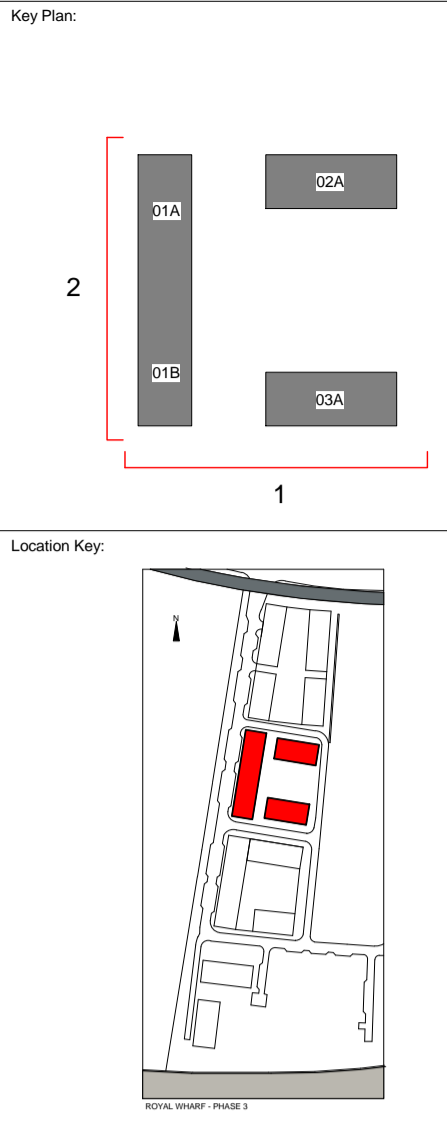
1. Brickwork - Marziale
2. Recessed Brickwork Marziale
3. Glass Balustrade
4. MVHR Grille within brickwork
5. MVHR grille within aluminium window frame
6. Metal Fence
7. Aluminium window /door frame PPC RAL 7006
8. Aluminium louvred doors PPC RAL 7006
9. PPC RAL 7006 RAL metal panel incorporated into aluminium window frame
10. Aluminium coping PPC RAL 7006
11. Dry rise inlet box
12. Aluminium curtain walling system PPC RAL 7006
13. Aluminium louvres PPC RAL 7006
14. Entrance canopy
15. Metal Balustrade
16. Lift Overrun



1 South Elevation
16088-TA-P-24.00-2-161 : 200



2 West Elevation
16088-TA-P-24.00-2-161 : 200



Revisions:

Rev	By	Date	Description
A	AJ	16/03/17	Planning - Updated drawings issue
-	AJ	21/12/16	Planning Issue

BALLYMORE

Project:

ROYAL WHARF - PHASE 3

Drawing Title:

South and West Elevations

TODD ARCHITECTS
2ND FLOOR TRINITY HOUSE,
6 GLEBE ROAD,
BRISTOL, BS1 2JF
T: 0117 927 0000
F: 0117 927 0001
E: INFO@TODDARCH.CO.UK
W: WWW.TODDARCH.CO.UK

TODD

Drawing No: **16088-TA-P-24.00-2-161** Revision: **A**

Project No:	Scale:	Date:
16088	As indicated	12/21/16
Plot:	Checked:	Scale:
24	AJ	WIP

DISCLAIMER: TODD ARCHITECTS CONFIRMS THAT RECIPIENTS CAN RELY ON APPROVED DOCUMENTS FOR INFORMATION ON CONSTRUCTION PROJECTS. TODD ARCHITECTS DOES NOT WARRANT THE ACCURACY OF INFORMATION PROVIDED TO RECIPIENTS. RECIPIENTS SHOULD VERIFY THE ACCURACY OF INFORMATION PROVIDED TO THEM BY THE ARCHITECT. TODD ARCHITECTS DOES NOT ACCEPT LIABILITY FOR ANY LOSS OR DAMAGE ARISING AS A RESULT OF RELIANCE ON THE INFORMATION PROVIDED TO RECIPIENTS. RECIPIENTS SHOULD VERIFY THE ACCURACY OF INFORMATION PROVIDED TO THEM BY THE ARCHITECT.