



We're so ready!

LONI LOVE
X ASHLEY STEWART



TREAT YOURSELF TO MY NEW SUMMER COLLAB WITH ASHLEY
XOXO Loni



Summer is an
Ashley state
of mind...



SO READY FOR
A Summer Refresh

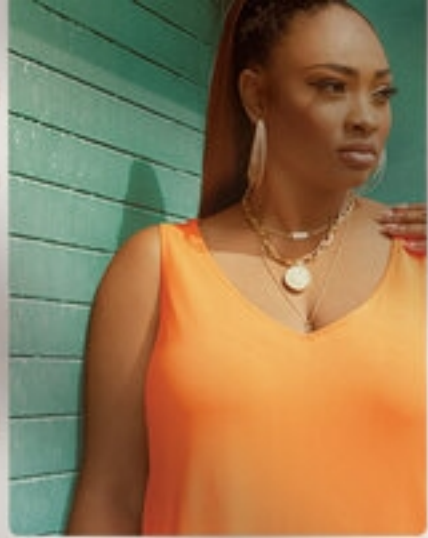


Go ahead.
Treat yourself.
Because a new
outfit (or two)
will brighten
your day!

#ASHLEYSTRONG



SO READY TO
Crush it with Color



Orange
+
blue
+
you

100%
fierce



#ASHLEYSTRONG

Drippin'
in white
feels oh
so right.



SO READY FOR
White Hot Style



#ASHLEYSTRONG



*3 perfect pieces
top - jeans - shorts*

Denim game
STRONG!

Summer's most
wanted styles...
get 'em before
they're gone.

#ASHLEYSTRONG



SO READY FOR
This Denim



SO READY TO
Be Bold

#ASHLEYSTRONG



SO READY TO
Accessorize



I'VE
GOT THE
JEANS
+ PANTS
YOU'LL WEAR
ON REPEAT

EVERY SIZE. EVERY SHAPE.

EVERY CURVE.

FASHION IN SIZES 10 TO 32

ASHLEY STEWART®

SHORT • REGULAR • TALL



JEANS + PANTS
MORE SIZES. MORE LENGTHS. MORE STYLES JUST FOR YOU.

It's time to refresh your wardrobe for the season ahead.
Find your perfect fit with my new collection of jeans & pants.


SIZES 10 TO 32 · SHORT · REGULAR · TALL



- part 1 -

J E A N S

FOR EVERY CURVE.

WATCH THE VIDEO 

the
GODDESS

1 wash
sizes 10-32

[SHOP GODDESS]



No-gap
waistband
+ built-in
ab toner
panels

Stretch
denim with
distressed
details

Slimming
seams and
skinny leg
openings

**THE ULTIMATE
CURVE ENHANCER**

Sculpts and shapes
with slimming technology
and stylish details.



the
**G
O
D
D
E
S
S**





- part 2 -

PANTS

FOR EVERY CURVE.

WATCH THE VIDEO [▶](#)

the
STRAIGHT

2 colors
short · regular · tall
sizes 10-32

[SHOP STRAIGHT]



Slim fit
with
pull-on
comfort

High-rise
structured
waistband

Shape
retaining
Ponte
fabric

**THE PANT YOU'LL
WEAR ON REPEAT**

Classic style in a fit
you can't live without.



the
WIDE LEG

2 colors
sizes 10-32

[SHOP WIDE LEG]

Gives
your
booty
a little
lift

High-rise
waist. Fitted
through hip
and thigh

Wide leg
opening
elongates
the figure

**TAILORED FOR
THE PERFECT FIT**

A timeless trouser that
gives you a lift.



the
WIDE LEG





the
ANKLE

3 colors
sizes 10-32

[SHOP ANKLE]



Front
pockets +
a hidden
zipper

A slim
fit to
accentuate
your curves

Tapered
at the
ankle

HUGS EVERY CURVE

Sleek and sexy. This pant is
feminine and refined.



the
ANKLE



the
LEGGING

multiple colors + styles
sizes 10/12 - 30/32

[SHOP LEGGING]



High-rise
waistband
with no-gap
technology

Power
Stretch
fabric
smooths
& shapes

An all
over
slim fit
hugs
your
curves

**A FIT THAT FLATTERS
ALL DAY LONG**

The perfect combination
of style & comfort.



the
LEGGING