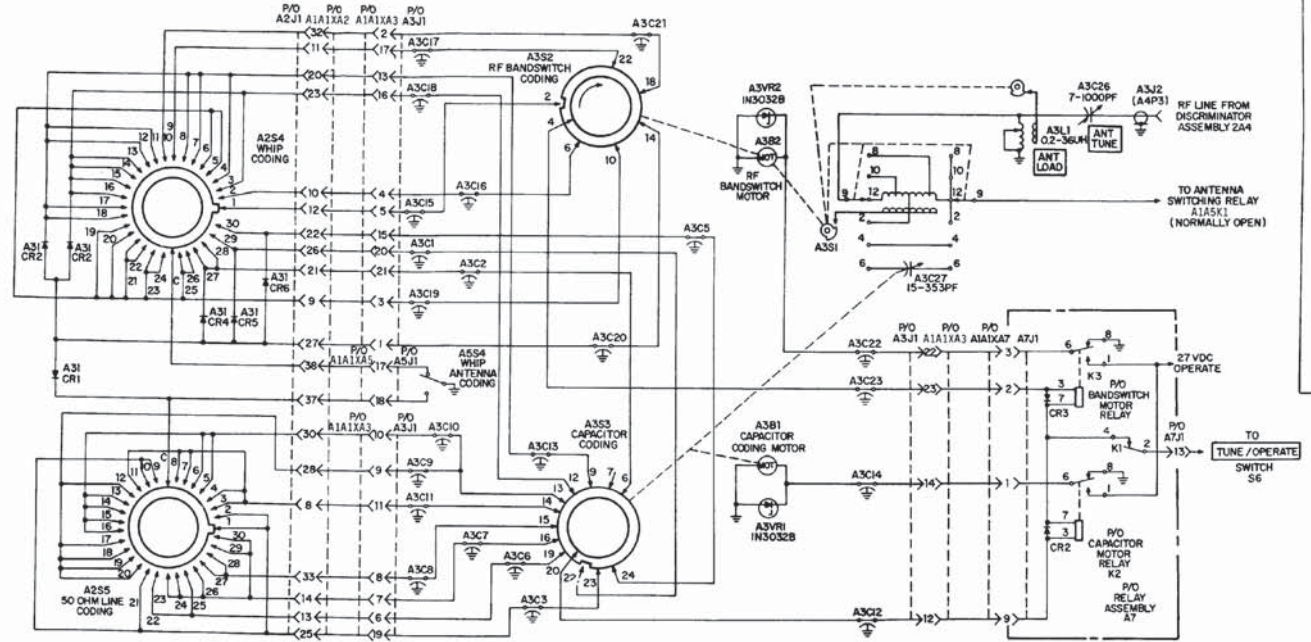


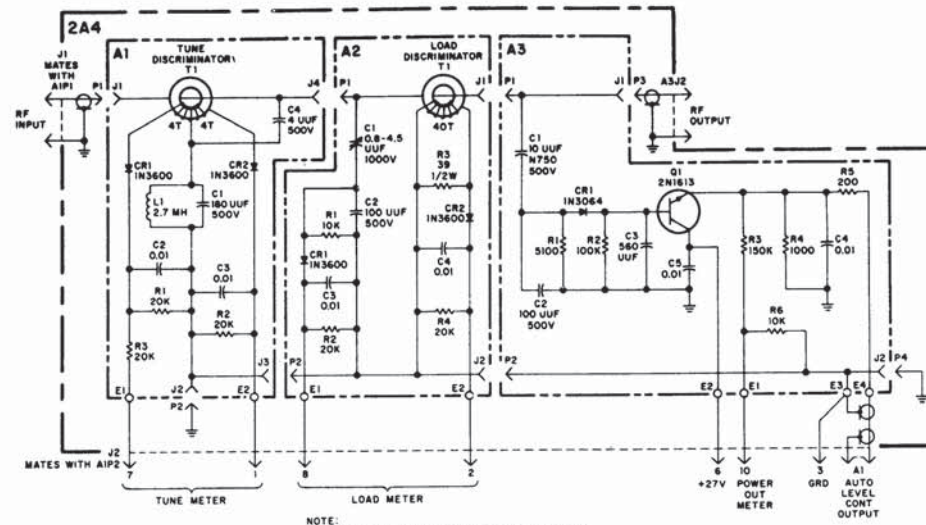
FIGURE FO-32 Antenna Coupler Assembly 2A3 Schematic Diagram

- NOTES:
 1. UNLESS OTHERWISE SPECIFIED ALL DIODES IN647
 2. ALL FEEDTHROUGH CAPACITORS ARE 0.001UF
 3. PREFIX ALL REFERENCE DESIGNATIONS ON THIS DIAGRAM WITH UNIT NUMBER 2.



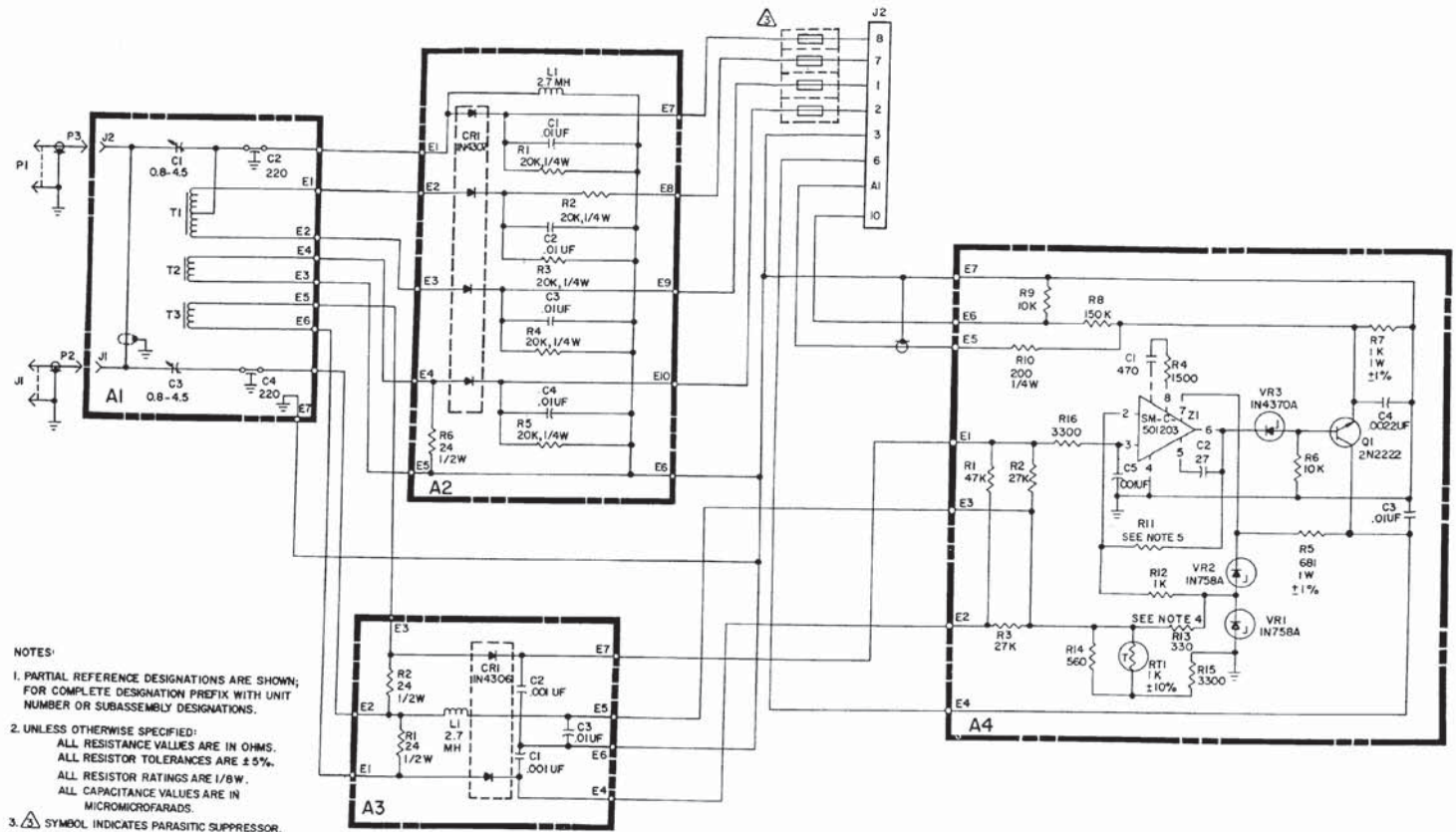
TURRET POSITION	OPERATING FREQ MHZ
1	2-2.5
2	3-3.5
3	14-15
4	15-16
5	24-25
6	25-26
7	16-17
8	17-18
9	2.5-3
10	3.5-4
11	19-19
12	19-20
13	26-27
14	27-28
15	28-29
16	29-30
17	20-21
18	21-22
19	22-23
20	23-24
21	4-5
22	5-6
23	8-9
24	9-10
25	6-7
26	7-8
27	12-13
28	13-14
29	10-11
30	11-12

FIGURE FO-33 Antenna Coupler Assembly 2A3 Tuning Controls



NOTE:
 1. PARTIAL REFERENCE DESIGNATIONS ARE SHOWN:
 FOR COMPLETE DESIGNATION, PREFIX WITH UNIT
 NUMBER OR SUBASSEMBLY DESIGNATIONS.
 2. UNLESS OTHERWISE SPECIFIED:
 ALL RESISTOR VALUES ARE IN OHMS ±5% 1/4W.
 ALL CAPACITOR VALUES ARE IN MICROFARADS, 200V.

FIGURE FO-34 Discriminator Assembly 2A4 Schematic Diagram



- NOTES:
1. PARTIAL REFERENCE DESIGNATIONS ARE SHOWN; FOR COMPLETE DESIGNATION PREFIX WITH UNIT NUMBER OR SUBASSEMBLY DESIGNATIONS.
 2. UNLESS OTHERWISE SPECIFIED: ALL RESISTANCE VALUES ARE IN OHMS. ALL RESISTOR TOLERANCES ARE $\pm 5\%$. ALL RESISTOR RATINGS ARE 1/8W. ALL CAPACITANCE VALUES ARE IN MICROMICROFARADS.
 3. Δ SYMBOL INDICATES PARASITIC SUPPRESSOR.
 4. VALUE SELECTED AT TEST 330, 360, 430, 470.
 5. VALUE SELECTED AT TEST 6200, 6800, 7500.

FIGURE FO-35 Discriminator Assembly 2A4 Schematic Diagram (Contract DAAB07-74-G-0164)

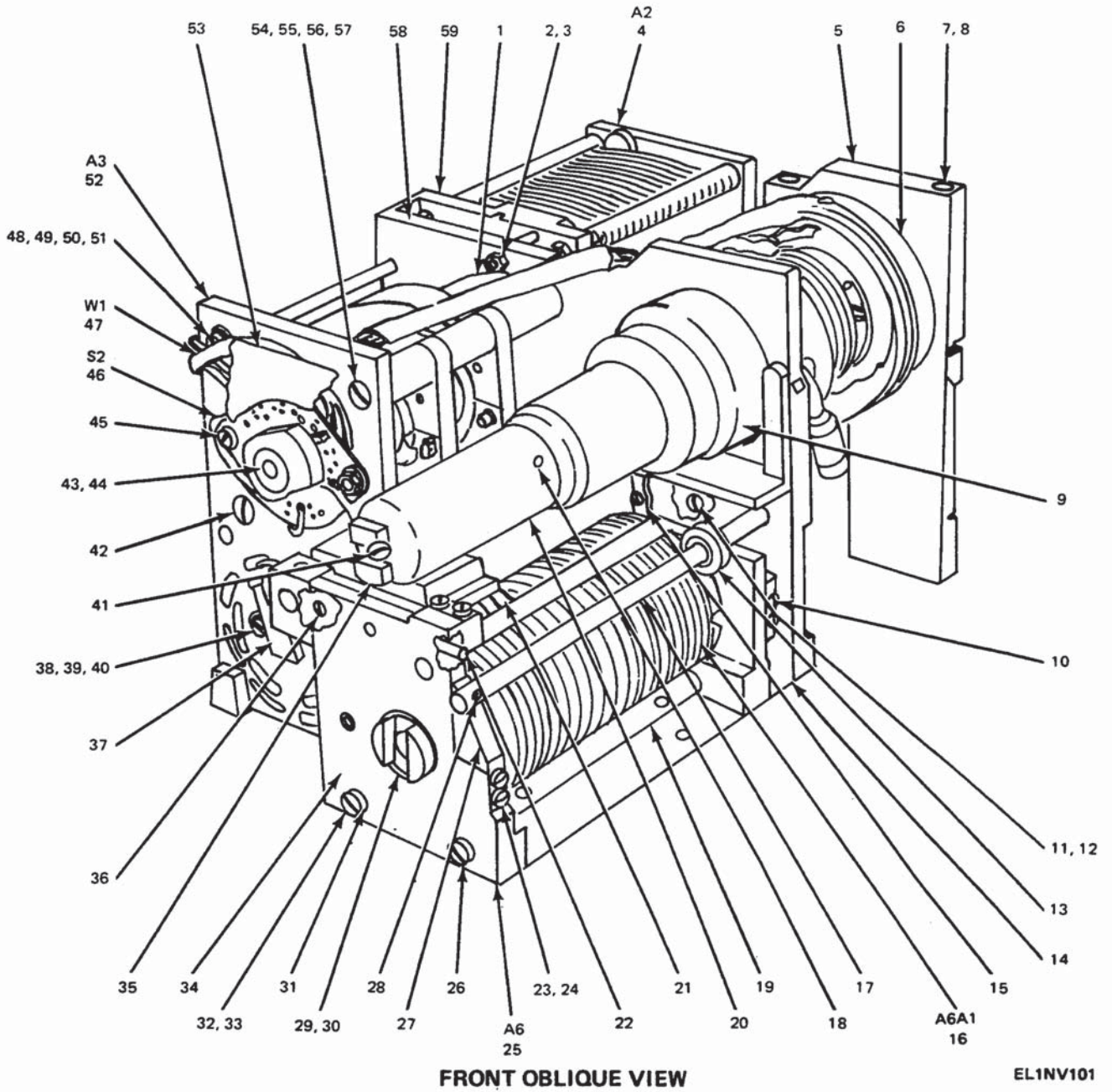
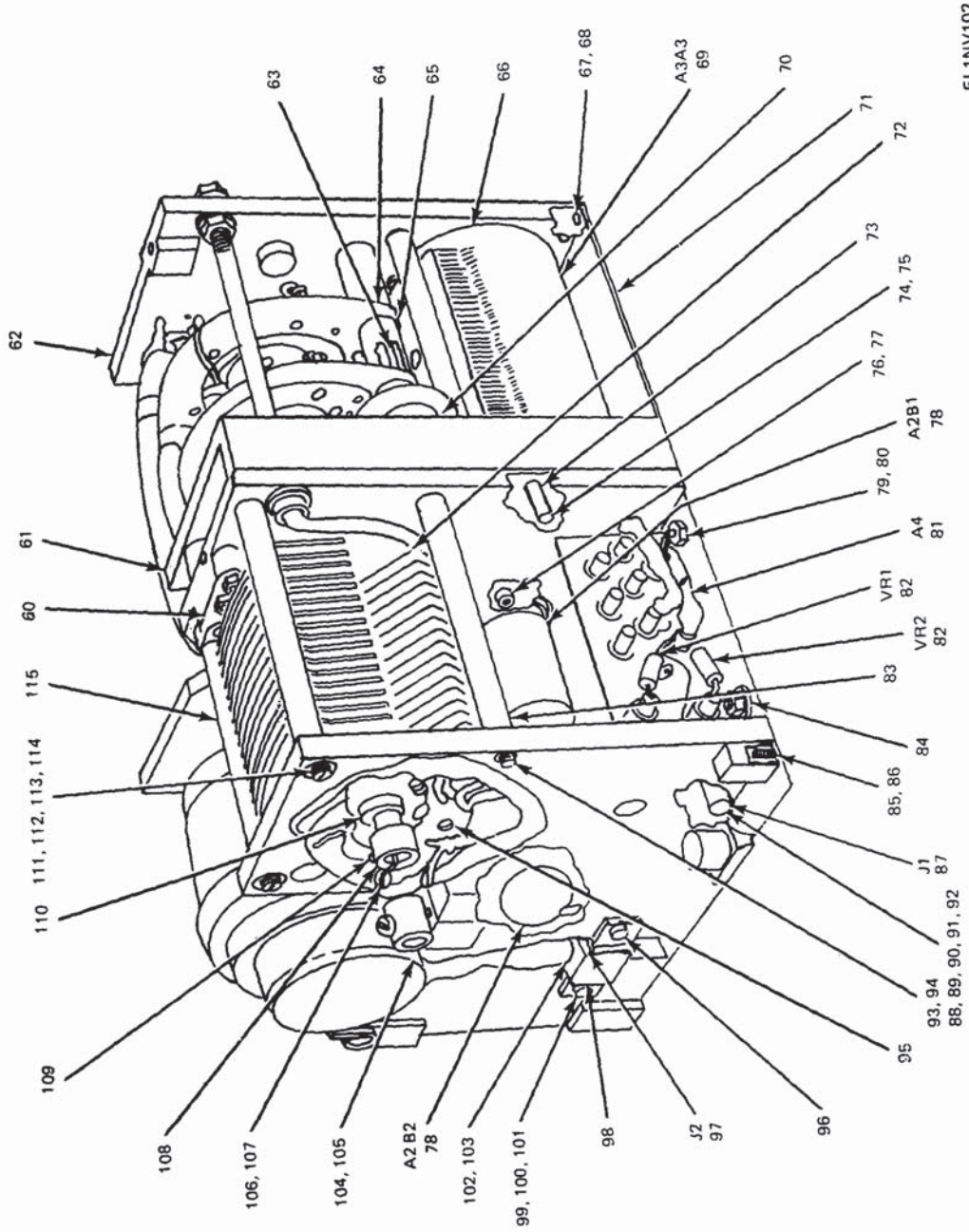


Figure 71. Antenna Coupler (2A3) (Sheet 1 of 3).



EL1NV102

REAR OBLIQUE VIEW

Figure 71. Antenna Coupler (2A3) (Sheet 2 of 3).

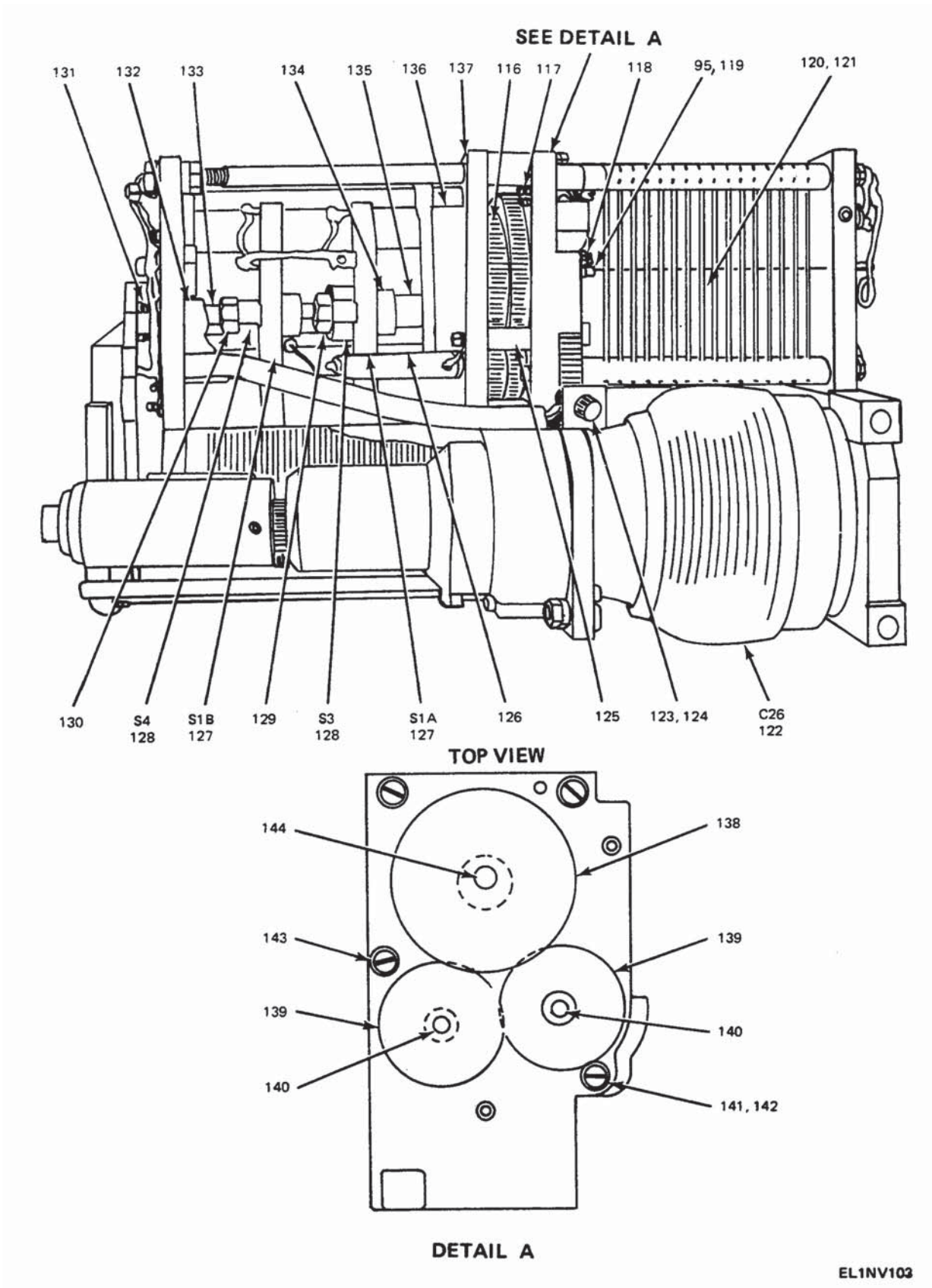


Figure 71. Antenna Coupler (2A3) (Sheet 3 of 3).

SECTION II				TM11-5820-520-34P-1					
(1)	(2)	(3)	(4)	(5)	(6)	(7)	(8)		
ILLUSTRATION								QTY	
(a)	(b)	NATIONAL			DESCRIPTION			INC	
FIG	ITEM	STOCK	PART	FSCM		USABLE	ON CODE	U/M	IN
NO.	NO.	NUMBER	NUMBER						UNIT
GROUP 0203 ANTENNA COUPLER (2A3)									
71	1	XDDZZ	SMB503183	80063	CAM CONTROL			EA	1
71	2	XDDZZ	SMD503178-4	80063	TERMINAL, LUG			EA	1
71	3	PADZZ	5310-00-934-9748	MS35649-244	96906	NUT, FLAIN, HEXAGON		EA	5
71	4	XDDDL		SMD502175	80063	CAPACITOR MOTOR, ANTENNA CPLR		EA	1
71	5	PADZZ	5340-00-301-4195	SMC503336	80063	CLAMP, U		EA	1
71	6	XDDZZ		SMC503021	80063	CAM CONTROL		EA	1
71	7	PADZZ	5310-00-929-6395	MS35338-136	96906	WASHER, LOCK		EA	4
71	8	XDDZZ		SM-B-501079-4	80063	SCREW, SELF-LOCKING		EA	2
71	9	PADZZ	5975-00-004-6522	SMC502173	80063	CLAMP, LOOP		EA	1
71	10	PADZZ	5820-00-908-8708	SMC503037	80063	REAR PLATE, ANTENNA COUPLER		EA	1
71	11	XDDZZ		SMD502999-4	80063	NUT, NYLON		EA	1
71	12	XDDZZ		SMD502999-2	80063	SCREW, NYLON		EA	1
71	13	PADZZ	5999-00-919-4967	SMB503018	80063	CONTACT, ELECTRICAL		EA	1
71	14	PADZZ	6150-00-926-8399	SMC503031	80063	BRACKET, ANGLE		EA	1
71	15	PADZZ	5999-00-930-9561	SMC503032	80063	CONTACT, ELECTRICAL		EA	1
71	16	PAFZZ	5950-00-908-9567	SM-C-503035	80063	COIL, RADIO FREQUENCY		EA	1
71	17	PADZZ	3040-00-930-9828	SMB503006	80063	SHAFT, STRAIGHT		EA	1
71	18	PADZZ	5305-00-717-6949	MS51963-10	96906	SETSCREW		EA	2
71	19	PADZZ	5340-00-307-1628	SMB503004	80063	SPACER, STEPPED		EA	2
71	20	XDDZZ		SMB502869	80063	COUPLING, INSULATED, BUSHING-SFT		EA	1
71	21	XDDZZ	5940-00-919-4395	SMB503025	80063	CONTACT, ELECTRICAL		EA	1
71	22	XDDZZ		SMC503011	80063	CONTACT, ELECTRICAL		EA	1
71	23	PADZZ	5310-00-721-3406	SMD502999-3	80063	SETSCREW		EA	2
71	24	PADZZ	5310-00-782-1349	AN960C4	88044	WASHER, FLAT		EA	2
71	25	PADDL	5820-00-908-8735	SMD502999	80063	TUNING COIL, COUPLER, ANTENNA		EA	1
71	26	XDDZZ		SMD502999-10	80063	WASHER, FLAT		EA	2
71	27	PADZZ	5360-00-908-2837	SMB503028	80063	CONTACT, ELECTRICAL		EA	2
71	28	XDDZZ		SMD502999-7	80063	SCREW, MACHINE		EA	2
71	29	PADZZ	5820-00-908-8694	SMB503007	80063	COLLAR SHAFT		EA	1
71	30	XDDZZ		SMD502999-8	80063	SETSCREW		EA	2
71	31	XDDZZ		SMB503005	80063	SPACER, STEPPED		EA	1
71	32	XDDZZ		SMD502999-5	80063	SCREW, MACHINE		EA	2
71	33	XDDZZ		SMD502999-6	80063	WASHER, FLAT		EA	4
71	34	PADZZ	5820-00-908-8709	SMD503036	80063	FRONT PLATE, COIL		EA	1
71	35	PADZZ	3010-00-285-4423	SMB502623	80063	COUPLING, INSULATED, BUSHING-SFT		EA	1
71	36	XDDZZ	5305-00-891-1732	N440-3/16	80063	SCREW, NYLON		EA	1
71	37	PADZZ	5999-00-866-9430	SMB502496	80063	CONNECTOR, ELECTRICAL		EA	1
71	38	PADZZ	5305-00-054-5648	MS51957-14	96906	SCREW, MACHINE		EA	1
71	39	PADZZ	5310-00-595-6211	MS15795-803	96906	WASHER, FLAT		EA	1

SECTION II		TM11-5820-520-34P-1							
(1)	(2)	(3)	(4)	(5)	(6)	(7)	(8)		
ILLUSTRATION									
(a)	(b)	NATIONAL			DESCRIPTION			(8)	
FIG NO.	ITEM NO.	SMR CODE	STOCK NUMBER	PART NUMBER	FSCM	USABLE ON CODE	U/M	QTY INC IN UNIT	
71	40	PADZZ	5310-00-933-8118	MS35338-135	96906	WASHER, LOCK	EA	1	
71	41	PADZZ	5305-00-953-4521	SMB502615	80063	SCREW, SHOULDERED	EA	1	
71	42	PADZZ	5310-00-558-6207	AN960C8L	88044	WASHER, FLAT	EA	1	
71	43	PADZZ	3040-00-285-4421	SMB503010	80063	COLLAR, SHAFT	EA	1	
71	44	PADZZ	5305-00-717-6950	MS51963-9	96906	SETSCREW	EA	2	
71	45	PADZZ	5305-00-054-5650	MS51957-16	96906	SCREW, MACHINE	EA	1	
71	46	PADZZ	5930-00-754-7337	SMC502057	80063	SWITCH SECTION, ROTARY	EA	1	
71	47	XDDZZ		SMD503179	80063	WIRING HARNESS	EA	1	
71	48	XDDZZ		SMB502267	80063	CONDUIT, METAL RIGID	EA	1	
71	49	PADZZ	5310-00-308-1461	SMB502201	80063	NUT, FLAIN, HEXAGON	EA	3	
71	50	XDDZZ		SMD503182-2	80063	WASHER, FLAT	EA	3	
71	51	PADZZ	5310-00-543-2740	MS35333-74	96906	WASHER, LOCK	EA	3	
71	52	XDFDL		SMD503182	80063	SWITCH COIL, COUPLER, ANTENNA	EA	1	
71	53	PADZZ	5820-00-342-2901	SMC503329	80063	COVER, SWITCH	EA	1	
71	54	PADZZ	5340-00-307-1478	SMB503369	80063	INSERT, SCREW THREAD	EA	1	
71	55	PADZZ	5305-00-054-6668	MS35233-43	96906	SCREW, MACHINE	EA	1	
71	56	PADZZ	5305-00-916-4414	LP57D40S4	03038	SCREW, MACHINE	EA	1	
71	57	XDDZZ		SMD503182-6	80063	WASHER, FLAT	EA	1	
71	58	PADZZ	6105-00-281-3927	SMC502211	80063	PLATE, MOUNTING MOTOR	EA	1	
71	59	XDDZZ	5999-00-003-8089	SMC502176	80063	PLATE, MOUNTING	EA	1	
71	60	XDDZZ	5940-00-513-3264	SMD502175-7	78189	TERMINAL, LUG	EA	1	
71	61	XDDZZ		SMD502264	80063	PLATE, MOUNTING, SWITCH	EA	1	
71	62	XDDZZ		SMD502269	80063	PLATE, MOUNTING, SWITCH	EA	1	
71	63	PADZZ	5307-00-367-6326	SMB502447	80063	STUD, THREADED	EA	2	
71	64	PADZZ	5310-00-301-4133	SMB502378	80063	WASHER, NONMETALLIC	EA	8	
71	65	XDDZZ		SMB502262	80063	SPACER, STEPPED	EA	2	
71	66	PADZZ	5820-00-342-2898	SMC502206	80063	COVER, SLEEVE, FIXED COIL	EA	1	
71	67	XDDZZ		SMD503182-4	80063	PACKING, PREFORMED	EA	2	
71	68	XDDZZ		SMD503182-5	80063	PACKING, PREFORMED	EA	2	
71	69	PADZZ	5950-00-785-4671	SMC502271	80063	COIL, RADIO FREQUENCY	EA	1	
71	70	XDDZZ		SMB502212	80063	SPRING, HELICAL TCRSION	EA	1	
71	71	XDDZZ		SMC503187	80063	PLATE, MOUNTING, COUPLER, ANTENNA	EA	1	
71	72	XDDZZ		SMC503186	80063	ROTOR, VARIABLE CAPACITOR	EA	1	
71	73	XDDZZ		SMB502440	80063	SPACER, STEPPED	EA	2	
71	74	PADZZ	5305-00-916-4414	LP57D40S4	03038	SCREW, SELF-LOCKING	EA	1	
71	75	PADZZ	5310-00-595-6425	AN960C4L	88044	WASHER, FLAT	EA	1	
71	76	XDDZZ		SMD502175-3	80063	NUT, FLAIN, HEXAGON	EA	4	
71	77	PADZZ	5305-00-457-5911	MS35249-35	96906	SCREW, MACHINE	EA	4	
71	78	PADZZ	3010-00-985-7958	SMC502066	80063	MOTOR, DIRECT CURRENT	EA	2	
71	79	PADZZ	5305-00-022-7058	MS35249-22	96906	SCRE, MACHINE	EA	4	

SECTION II							TM11-5820-520-34P-1		
(1)	(2)	(3)	(4)	(5)	(6)	(7)	(8)		
ILLUSTRATION									
(a)	(b)	NATIONAL			DESCRIPTION			(8)	
FIG NO.	ITEM NO.	SMR CODE	STOCK NUMBER	PART NUMBER	FSCM	USABLE ON CODE	U/M	QTY INC IN UNIT	
71	80	PADZZ	5310-00-045-5204	MS15795-904	96906	WASHER, FLAT	EA	4	
71	81	XDDDD		SMC502162	80063	FILTER, COUPLER, ANTENNA	EA	1	
71	82	PADZZ	5961-00-852-5170	JAN1N3032B	81349	SMICONDUCTOR DEVICE, DIODE	EA	2	
71	83	PADZZ	5340-00-307-1964	SMB502199	80063	SPACER, STEPPED	EA	2	
71	84	XDDZZ	5940-00-847-3138	2101-04-00	78189	TERMINAL, LUG	EA	1	
71	85	PADZZ	5305-00-054-6651	MS51957-27	96906	SCREW, MACHINE	EA	4	
71	86	XDDZZ		SMB503196	80063	WASHER, FLAT	EA	4	
71	87	PADZZ	5935-00-489-9999	SM-C-500320-30	80063	CONNECTOR, RECEPTACLE, ELEC	EA	1	
71	88	PADZZ	5305-00-054-5648	MS51957-14	96906	SCREW, MACHINE	EA	4	
71	89	XDDZZ		SMB502642-2	80063	SPACER, THREADED	EA	2	
71	90	PADZZ	5310-00-595-6425	AN960C4L	88044	WASHER, FLAT	EA	2	
71	1	XDDZZ		SMB502874	80063	WASHER, FLAT	EA	2	
71	92	PADZZ	5310-00-933-8118	MS35338-135	96906	WASHER, LOCK	EA	4	
71	93	PADZZ	5305-00-054-5653	MS51957-19	96906	SCREW, MACHINE	EA	1	
71	94	XDDZZ		SMD502175-4	80063	WASHER, FLAT	EA	1	
71	95	PADZZ	5930-00-754-7338	SMC500441	8063	SWITCH, SECTION, ROTARY	EA	1	
71	96	PADZZ	5305-00-054-5648	MS51957-14	96906	SCREW, MACHINE	EA	2	
71	97	PADZZ	5935-00-925-6447	SMB502563	80063	CONNECTOR, RECEPTACLE, ELEC	EA	1	
71	98	XDDZZ		SMB502322	80063	BRACKET, CONNECTOR	EA	1	
71	99	PADZZ	5365-00-310-4976	SMB503020-2	80063	WASHER, FLAT	EA	2	
71	100	PADZZ	5305-00-916-4414	LP57D4084	03038	WASHER, FLAT	EA	2	
71	101	PADZZ	5310-00-933-8118	MS35338-135	96906	WASHER, LOCK	EA	2	
71	102	PADZZ	5310-00-515-7449	AN960C416L	88044	WASHER, FLAT	EA	1	
71	103	XDDZZ		SMB500324	80063	WASHER, SHOULDER	EA	1	
71	104	PADZZ	5365-00-308-1349	SMB503020-1	80063	WASHER, FLAT	EA	1	
71	105	XDDZZ		SMB503020-3	80063	WASHER, FLAT	EA	2	
71	106	PADZZ	5305-00-054-5648	MS51957-14	96906	SCREW, MACHINE	EA	2	
71	107	PADZZ	5310-00-933-8118	MS35338-135	96906	WASHER, LOCK	EA	2	
71	108	PADZZ	3040-00-285-4421	SMB503010	80063	COLLAR, SHAFT	EA	1	
71	109	XDDZZ		SMD502175-2	80063	SETSCREW	EA	2	
71	110	PADZZ	3110-00-731-1718	SMB502437	80063	BEARING, BALL	EA	2	
71	111	PADZZ	5305-00-054-6657	MS51957-33	96906	SCREW, MACHINE	EA	2	
71	112	PADZZ	5365-00-486-0263	SMB502180	80063	SPACER, SLEEVE	EA	2	
71	113	PADZZ	5310-00-531-9514	AN960C6	88044	WASHER, FLAT	EA	1	
71	114	PADZZ	5365-00-307-1623	SMB502996	80063	WASHER, FLAT	EA	4	
71	115	PADZZ	5910-00-757-4346	SMC502186	80063	STATOR, VARIABLE CAPACITOR	EA	1	
71	116	PADZZ	3020-00-978-1400	SMC502397	80063	GEAR, SPUR	EA	1	
71	117	PADZZ	5305-00-054-6670	MS51957-45	96906	SCREW, MACHINE	EA	2	
71	118	PADZZ	5999-00-726-8810	SMB502187	80063	CONTACT, ELECTRICAL	EA	1	
71	119	PADZZ	5305-00-054-5647	MS51957-13	96906	SCREW, MACHINE	EA	1	

SECTION II						TM11-5820-520-34P-1		
(1)	(2)	(3)	(4)	(5)	(6)	(7)	(8)	
ILLUSTRATION								
(a)	(b)	NATIONAL			DESCRIPTION		QTY	
FIG	ITEM	STOCK	PART	FSCM		U/M	INC	
NO.	NO.	NUMBER	NUMBER				IN	
							UNIT	
71	120	PADZZ	5910-00-728-1354	SMC502178	80063	ROTOR, VARIABLE CAPACITOR	EA	1
71	121	PADZZ	5315-00-844-5644	MS16562-194	98906	PIN, SPRING	EA	1
71	122	PAFZZ	5910-00-581-2945	SMC500916	80063	CAPACITOR, VARIABLE, GAS DIEI	EA	1
71	123	XDDZZ		SMB501079-3	80063	SCREW, SELF-LOCKING	EA	1
71	124	XDDZZ		SMB500387	80063	WASHER, FLAT	EA	1
71	125	PADZZ	5305-00-298-3080	SMB500412	80063	SCREW, MACHINE	EA	1
71	126	PADZZ	5365-00-310-6192	SMB502439	80063	SPACER, SLEEVE	EA	2
71	127	PADZZ	5930-00-755-6642	SMC502217	80063	SWITCH SECTION, ROTARY	EA	2
71	128	PADZZ	5930-00-755-6643	SMC502218	80063	SWITCH SECTION, ROTARY	EA	2
71	129	PAOZZ	5305-00-247-1324	MS35233-47	96906	SCREW, MACHINE	EA	1
71	130	PADZZ	5315-00-882-1438	MS16562-193	96906	PIN, SPRING	EA	1
71	131	PADZZ	5305-00-717-6950	MS51963-9	96906	SETSCREW	EA	2
71	132	PADZZ	3110-00-731-1718	SMB502437	80063	BEARING, BALL	EA	2
71	133	XDDZZ		SMB502894	80063	SHAFT, STRAIGHT	EA	1
71	134	PADZZ	5315-00-844-5644	MS16562-194	96906	PIN, SPRING	EA	1
71	135	XDDZZ		SMB502463	80063	SPACER, STEPPED	EA	1
71	136	XDDZZ		SMC502275	80063	CONTACT, CAM FOLLOWER	EA	1
71	137	PADZZ	5365-00-720-8064	MS16624-1025	96906	RING, RETAINING	EA	1
71	138	XDDZZ		SMC502646	80063	GEAR, SPUR	EA	1
71	139	XDDZZ		SMC502396	80063	GEAR, SPUR	EA	2
71	140	XDDZZ		SMD502175-5	80063	PIN, SPIRAL	EA	1
71	141	PADZZ	5305-00-515-7219	MS35233-17	96906	SCREW, MACHINE	EA	1
71	142	PADZZ	5310-00-595-6425	AN960C4L	88044	WASHER, FLAT	EA	1
71	143	PADZZ	5305-00-022-7058	MS35249-22	96906	SCREW, MACHINE	EA	1
71	144	XDDZZ		SMD502175-1	80063	SETSCREW	EA	2