





15

118/T4/797

Quality:
PHILDAR LUXE

DRESS

To fit: 43 (46, 48, 53, 58)cms

17 (18, 19, 21, 23)ins Chest (see size charts)

MATERIALS

2 (2, 3, 3, 4) balls Blanc

2 Buttons

Suggested needle size: Pair 2mm and 2½mm needles (see note on Tension)

TENSION

30sts and 40 rows to 10cms measured over patt or st st on 2½mm needles.

37sts and 40 rows to 10cms measured over k2/p2 rib on 2½mm needles.

Important — Use larger or smaller needles if necessary to obtain correct tension.

BACK

With 2mm needles cast on 134 (146, 146, 154, 154)sts.

1st row: K2 * p2, k2, rep from * to end.

Work 1.5cms in k2/p2 rib ending with a right side row.

Next row: Rib to end and inc 1 (dec 1, dec 1, inc

1, inc 1). 135 (145, 145, 155, 155)sts.

Change to 2½mm needles and work 4 rows in st st (1 row k, 1 row p).

Commence patt.

1st row: K2 * yfwd, k2tog, k8, rep from * to last 3sts, yfwd, k2tog, k1.

2nd and alt rows: P to end.

3rd row: K2 * k1, yfwd, k2tog, k5, sl 1, k1, psso, yfwd, rep from * to last 3sts, k1, yfwd, k2tog.

5th row: K2 * k2, yfwd, k2tog, k3, sl 1, k1, psso, yfwd, k1, rep from * to last 3sts, k3.

7th row: K2 * k3, yfwd, k2tog, k1, sl 1, k1, psso, yfwd, k2, rep from * to last 3sts, k3.

9th row: K2 * k4, yfwd, dec 2 V (sl 2sts as if to ktog, slip 1st st back onto left needle

and knit tog with 3rd st passing behind 2nd st, slip 2nd st over st just made), yfwd, k3, rep from * to last 3sts, k3.

11th row: K to end.

13th row: K2 * k1 below (k into centre of st below st on needle and slip st off left needle), k9, rep from * to last 3sts, k1 below, k2.

15th row: K1, k1 below * k1, k1 below, k7, k1 below, rep from * to last 3sts, k1, k1 below, k1.

17th row: K2 * (k1 below, k1) twice, k4, k1 below, k1, rep from * to last 3sts, k1 below, k2.

19th row: K1, k1 below * (k1, k1 below) twice, k2, (k1, k1 below) twice, rep from * to

last 3sts, k1, k1 below, k1.

21st row: K2 * (k1 below, k1) 5 times, rep from * to last 3sts, k1 below, k2.

23rd row: K1, k1 below * (k1, k1 below) 5 times, rep from * to last 3sts, k1, k1 below, k1.

25th row: K2 * k2, (k1 below, k1) 4 times, rep from * to last 3sts, k3.

27th row: K2 * k3, (k1 below, k1) 3 times, k1, rep from * to last 3sts, k3.

29th row: K2 * k4, (k1 below, k1) twice, k2, rep from * to last 3sts, k3.

31st row: K2 * k5, k1 below, k4, rep from * to last 3sts, k3.

32nd row: P to end.

Cont in st st until work measures 22.5 (24.5, 27.5, 30.5, 32.5)cms ending with a right side row.

Dec row: P0 (0, 2, 0, 3), (p2tog) 6 (4, 0, 2, 0) times, [p2tog, p1 (1, 1, 1, 2)] 37 (43, 47, 49, 37) times, (p2tog) 6 (4, 0, 2, 0) times, p0 (0, 2, 0, 4). 86 (94, 98, 102, 118)sts.

Next row: K2 (0, 2, 2, 2) * p2, k2, rep from * ending p0 (2, 0, 0, 0).

Work 3 (3.5, 4, 5, 6.5)cms in k2/p2 rib from dec row ending with a wrong side row.

SHAPE ARMHOLES

Cast off 5sts at beg of next 2 (2, 2, 2, 4) rows.

Cast off 4sts at beg of next 4 (2, 4, 4, 4) rows.

Cast off 3sts at beg of next 2 (4, 2, 2, 4) rows.

Cast off 2sts at beg of next 2 (4, 4, 4, 4) rows.

Cast off 1 st at beg of next 2 (4, 6, 6, 6) rows. 48 (52, 52, 56, 56)sts.

Next row: (RS fac) K3 * p2, k2, rep from * ending last rep k3.

Cont in k2/p2 rib until work measures 9 (10.5, 12, 13, 15.5)cms from dec row ending with a wrong side row.

SHAPE NECK

Next row: Rib 18 (20, 20, 22, 22), cast off 12sts, rib 18 (20, 20, 22, 22).

Work each side of neck separately.

Next and alt rows: Rib to end.

Next row: Cast off 4 (4, 4, 5, 5)sts at neck edge, rib to end.

Next row: Cast off 3 (4, 4, 5, 5)sts at neck edge, rib to end.

Next row: Cast off 3 (4, 4, 4, 4)sts at neck edge, rib to end.

Cont on rem 8sts working k3 at each edge on right side row, until work measures 14 (15.5, 17, 19, 21.5)cms from dec row ending with a wrong side row.

Next row: K2tog, k1, cast off 2sts, k1, k2tog.

Next row: P2, cast on 2sts, p2.

Next row: K2tog, p2, k2tog.

Next row: P2tog, p2tog.

Cast off rem 2sts.

Rejoin yarn at neck edge and complete other side of neck to match reversing shaping.

FRONT

With 2mm needles cast on 138 (150, 150, 158, 158)sts.

1st row: K2 * p2, k2, rep from * to end.

Work 1.5cms in k2/p2 rib ending with a right side row.

Next row: Rib to end and inc 1 (dec 1, dec 1, inc 1, inc 1). 139 (149, 149, 159, 159)sts.

Change to 2½mm needles and work 4 rows in st st. Commence patt.

1st row: K9 * yfwd, k2tog, k8, rep from * to end.

2nd and alt rows: P to end.

3rd row: K7, sl 1, k1, pssso, yfwd, k1 * yfwd, k2tog, k5, sl 1, k1, pssso, yfwd, k1, rep from * to last 9sts, yfwd, k2tog, k7.

5th row: * K1, yfwd, k2tog, k3, sl 1, k1, pssso, yfwd, k2, rep from * ending last rep, k1.

Cont in patt as Back as now set (commencing at 2nd st of diagram, rep 10sts and end at 10th st on diagram, working 1 st at each edge for seam, k on RS rows and p on WS).

Complete 32 rows and cont in st st until work measures 22.5 (24.5, 27.5, 30.5, 32.5)cms ending with a right side row.

Dec row: P0 (0, 0, 0, 3), (p2tog) 10 (8, 2, 6, 2) times, [p2tog, p1 (1, 1, 1, 2)] 33 (39, 47, 45, 36) times, (p2tog) 10 (8, 2, 6, 3) times, p0 (0, 0, 0, 2). 86 (94, 98, 102, 118)sts.

Next row: K2 (0, 2, 2, 2) * p2, k2, rep from * ending p0 (2, 0, 0, 0).

Cont in k2/p2 rib as Back, shape armholes and cont until work measures 6 (7.5, 9, 10, 12.5)cms from dec row ending with a wrong side row. 48 (52, 52, 56, 56)sts.

SHAPE NECK

Next row: Rib 20 (22, 22, 24, 24), cast off 8sts, rib 20 (22, 22, 24, 24).

Work each side of neck separately.

Cast off at neck edge on alt rows, 4sts once, 3sts

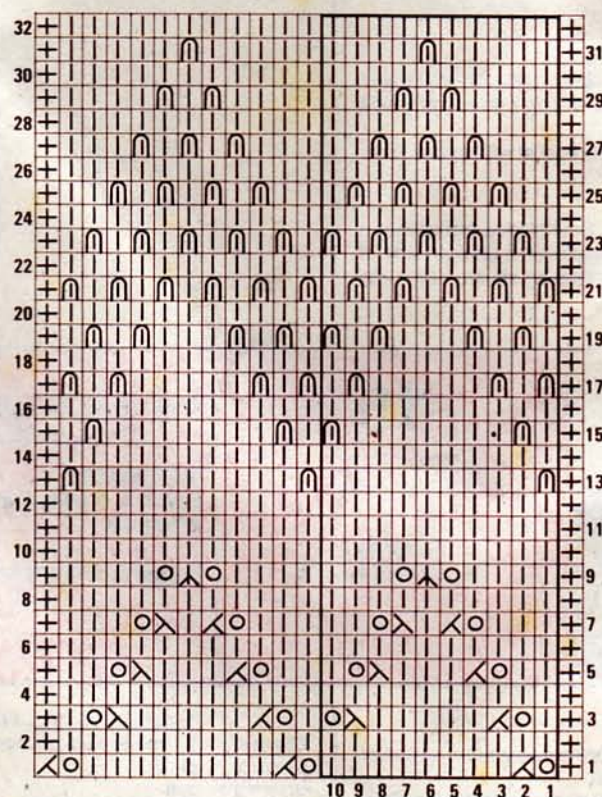
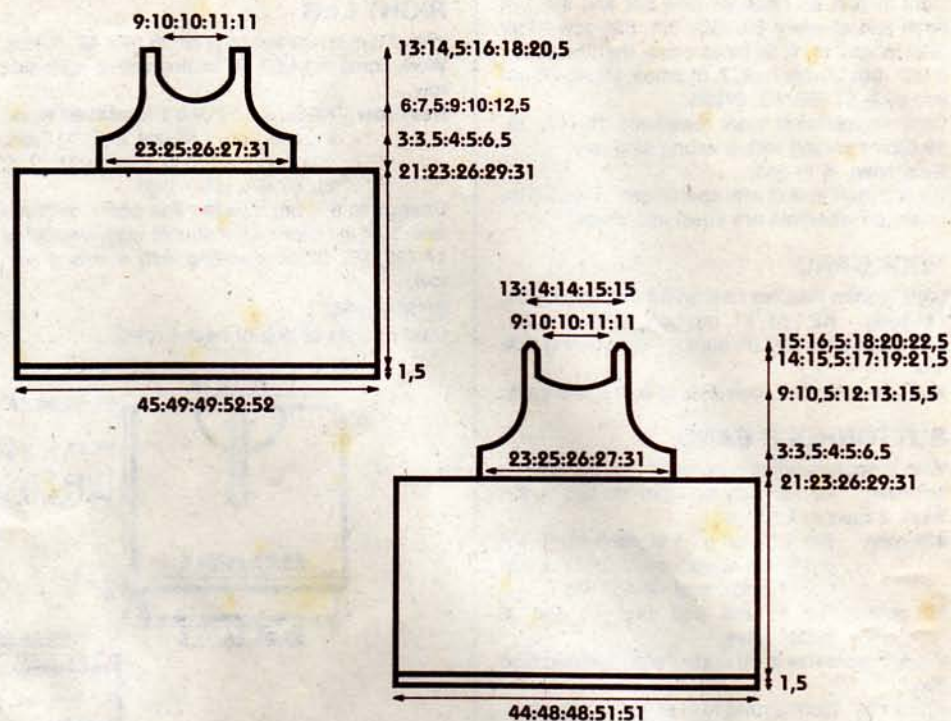
once, 2sts 1 (2, 2, 3, 3) times and 1 st 3 times. Cont on rem 8sts as Back until work measures 13 (14.5, 16, 18, 20.5)cms from dec row ending with a wrong side row.

Cast off.

Rejoin yarn at neck edge and complete other side of neck to match reversing shaping.

TO MAKE UP

Join side seams. Sew buttons to front straps.



l = k st on right side and p st on wrong side.

⌋ = k2tog

⌋ = sl 1, k1, pssso

○ = yarn forward

⤴ = Dec 2V — slip 2sts as if to k2tog, sl 1st st back onto left needle and k tog with 3rd st, passing behind 2nd st, slip 2nd st over st just made.

⌋ = k1 below = k into centre of st below st on needle and slip st of left needle

+ = Edge st — k on RS, p on WS