

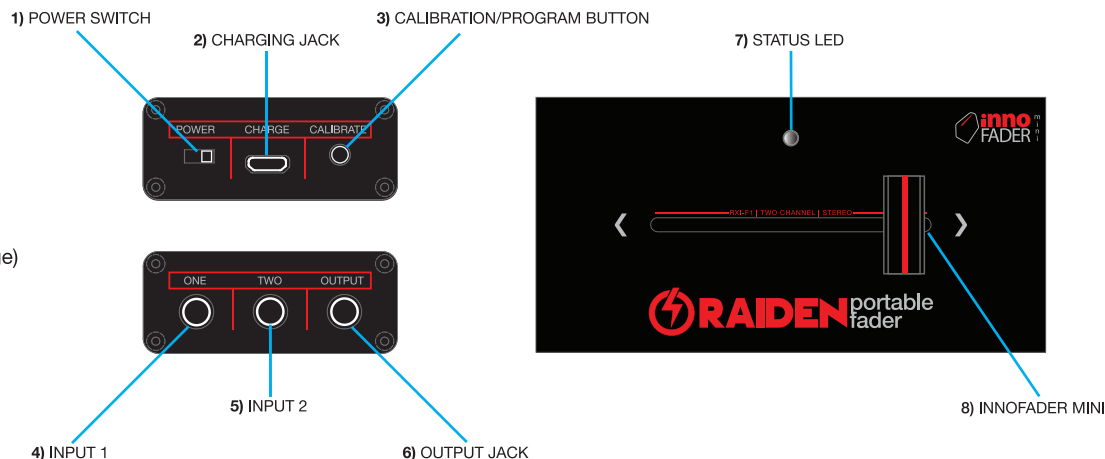
## DEVICE OVERVIEW :

- 2 channel operation (L and R)
- Stereo Output
- 3 Programmable curve options
- Programmable crossfader reverse
- Cut in length adjustments, 0.15 mm increments for each side.

Body : Full Aluminum body  
 Finish : Satin black powder coat  
 Battery : Rechargeable Lithium-Ion Polymer  
 Battery Life : Average 10 hrs (from full charge)  
 Charge Time : 1.5 hrs (from complete drain)

Weight : 3.7 oz  
 Dimensions : 100 mm x 50 mm x 20 mm

\* Attach the RXI-F1 to any surface using hook and loop adhesive strips (velcro) on the underside. 1 piece is included with the device, but any other type can be used.

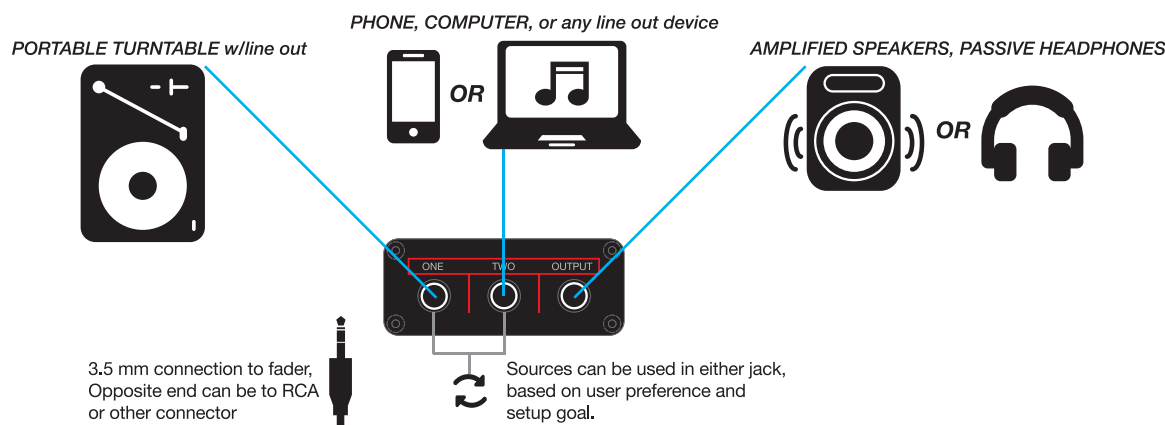


## FEATURES :

- 1) POWER SWITCH :** On and Off function for the device. Switch placed in left position indicates ON, right position is OFF.
- 2) CHARGING JACK :** The RXI-F1 contains a internal rechargeable battery that is charged through this micro usb jack. The jack is compatible with any micro usb male to usb type A male cable. The device will charge from any 5 volt usb source. This includes computers or thru appropriately rated 5 volt usb adaptors in your home or automobile. Charging time from 0% battery, to 100% takes approximately 1.5 hours. **Please do not over charge after battery is full!** Simple charging status can be seen by referring to the STATUS LED highlighted in (#6) of this guide. **The RXI-F1 can be used while charging, and has a internal power shut off, turning off the device once battery levels are too low for operation.**
- 3) CALIBRATION BUTTON :** Use this button to change/switch fader settings. The Innofader mini within our RXI-F1 has 3 curve adjustments, crossfader polarity (reverse), and cut in length adjustment for each side of the fader. Follow the calibration settings shown on the backside of this guide to acheive your desired settings. The fader comes preset to a on/off scratch cut, in normal position, with a regular cut in time.
- 4) INPUT 1 :** 3.5 MM stereo jack for LEFT side channel input of fader. The RXI-F1 is compatible with any line level source such as portable turntables, mobile phones, computers, samplers, drum machines, media players, recorders, keyboards, sythesizers, etc... limitless possibilities!
- 5) INPUT 2 :** 3.5 MM stereo jack for RIGHT side channel input of fader. SAME SPECIFICATIONS AS (#4 INPUT 1)
- 6) OUTPUT JACK :** 3.5 MM stereo output. Sound can be routed out the RXI-F1 by using the appropriate audio cable. External speakers, amplifiers, or headphones are some of the choices that can be used. This device contains a built in headphone amplifier, compatible with regular passive headphones. **The RXI-F1 has no internal volume adjustment. Gains must be set accordingly on input devices plugged into INPUT 1 and 2.**
- 7) STATUS LED :** Shows the power/charging status of the device. **RED LIGHT** = power is on and either **A)** charging cable is disconnected or **B)** battery is fully charged with charging cable connected. **ORANGE LIGHT** = power is on and battery is currently charging with charging cable connected. **GREEN LIGHT** = power is off and device is charging through the usb cable. **NO LIGHT** : power is off to the device, or battery is depleted and needs to be charged.
- 8) INNOFADER MINI :** The RXI-F1 contains a non contact Innofader mini which is rated for over 4 million cycles. Is has ultra smooth feel, precision, and low maintenance. The fader is programmable by the calibration button described in feature (#3), and the instructions on the back of this guide.

## SETUP :

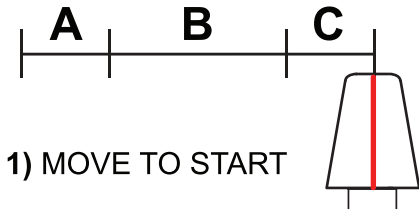
The RXI-F1 can be used and setup in various ways. The possibilities are wide, and based solely on user preference. Below we show the most common SCRATCH practice setup, using 1 portable turntable with line level output, another line level source for background beat, and a external speaker with an aux in jack to play the sound. Both the turntable and mobile phone/laptop is routed through inputs 1 and 2 of the RXI-F1 using 3.5mm cables. Input 1 and 2 connections can be switched around based on user preference. The output of the RXI-F1 is connected to the external speaker's aux in jack with a 3.5mm cable. Headphones can also be used in place of the external speaker.



## For the Perfect Scratch:

The Innofader mini version of the Raiden RXI-F1 Portable Fader has 3 adjustments: **cut-in, curve, and polarity (reverse)**. As shown below, you make these adjustments by doing the following with the device on and the front panel facing you:

- 1) starting the fader in the left (A), middle (B), or right (C) regions of the fader
- 2) pressing and holding the calibrate button
- 3) sliding the fader stem through certain patterns while holding the calibrate button, and
- 4) releasing the calibrate button to save your adjustment.



**1) Move to the correct starting position:**

“A” adjusts the left side cut-in

“B” adjusts the curve or output polarity

“C” adjusts the right side cut-in

The picture shows the start of a right side cut-in adjustment

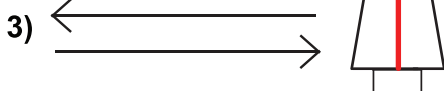


**2) PRESS CALIBRATE BUTTON**

**2) Press and hold** the calibrate button.

**Be careful not to move the knob while pressing the button!**

THIS IS “CBABC” FOR RIGHT DECREASE LAG



**3)**

**3) Slide fader as such while holding calibrate button down!**

**CUT-IN:** adjustment is small, maybe do a few times!

Left Increase lag ~ 0.15mm	<b>ABCB</b>	
Left decrease lag ~ 0.15mm	<b>ABCBA</b>	
Right increase lag ~ 0.15mm	<b>CBAB</b>	
Right decrease lag ~ 0.15mm	<b>CBABC</b>	

IF YOU DO THE WRONG PATTERN BY ACCIDENT, NO NEED TO PANIC... YOU CAN REPEAT STEPS 1-4 AS MANY TIMES AS YOU NEED.



**HOLD CALIBRATE BUTTON**

**CURVE:**

B type linear mix curve	<b>BABCB</b>	
On off for scratching (default)	<b>BABC</b>	
C type for sharper mix curve	<b>BABCBA</b>	

**POLARITY (REVERSE):**

Factory default forward	<b>BCBC</b>	
Output reversed from original	<b>BABA</b>	



**4) RELEASE CALIBRATE BUTTON**

**4) Release calibrate button.**

**Be careful not to move the knob while releasing the button!**

CONTACT AND LINKS FOR FURTHER READING:  
Innofader technical support: [support@audioinnovate.com](mailto:support@audioinnovate.com)  
Innofader website: <http://www.innofader.com>