

2007 Driver / Passenger Bottom Skin Installation- Bench

Figure 1.



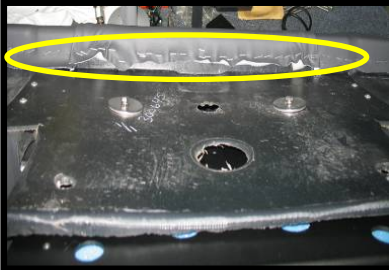
Step 1: Remove driver and/or passenger back pad.

Figure 2.



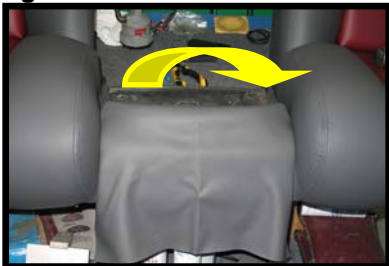
Step 2: Center seat will need to be removed. Start by removing these bolts.

Figure 3.



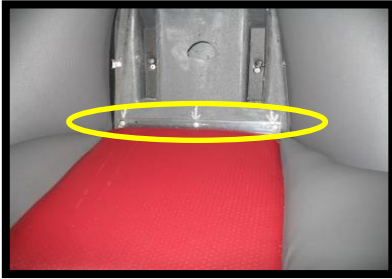
Step 3: Remove the staples

Figure 4.



Step 4: Next, remove the shim (horn shaped piece in front of center seat). Start at back of seat and pull shim forward

Figure 5.



Step 5: Remove the pop rivets.

Figure 6.



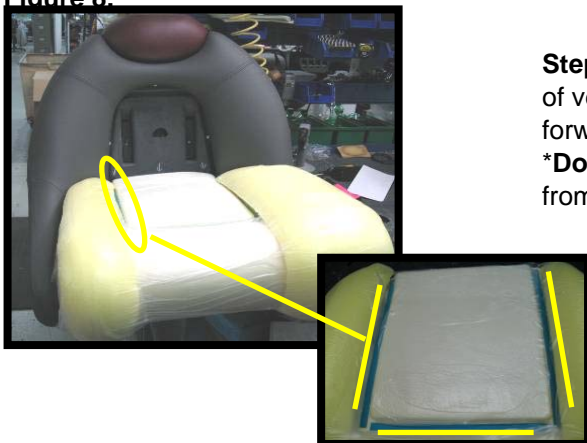
Step 6: Remove staples from each area indicated in Fig. 6.

Figure 7.



Step 7: Pull material to the top of the cushion as seen in Fig. 7.

Figure 8.



Step 8: To remove skin from foam, hold blue piece of velcro with one hand, and gently pull skin forward, from the back, with the other.
***Do not** allow the **blue** velcro to separate from the foam.

Figure 9.



Step 9: Line up white velcro on material with blue velcro on foam. Starting from the front of the foam and working your way back press velcro pieces together firmly.

Figure 10.



Step 10: Line up clear plastic plate with corresponding holes in order to replace the pop rivets. Pull the (3) largest tabs of material down thru the board in corresponding slats.

Part # 7958043 (Pop Rivets)

Figure 11.



Step 11: Pull center seam straight down and staple.

Figure 12.



Step 12: Pull the corners down and staple in place, then staple remaining material in place.

*Be sure to staple tabs pulled thru from Fig. 10.

Figure 13.



Step 13: Insert pegs (shown in Fig. 13) into holes (shown in Fig. 14).

Figure 14.



Figure 15.



Step 14: Flip seat back over and staple material in place.

Figure 16.



Step 15: Place blocks or shims behind flip seat in order to push seat forward for a firm fit before bolting seat in place. See **Step 2 / Fig. 2** for placement of bolts.