

# Economic Development Along Indiana Roadways (EDAIR)

## WHAT IS EDAIR?

Conexus Indiana and the Indiana Department of Transportation (INDOT) launched a new tool to measure economic impact in support of strategic economic growth.

The Economic Development Along Indiana Roadways (EDAIR) tool scores Indiana's roadways to determine which roads are most critical to Indiana's economic growth.

EDAIR answers specific questions related to economic development in Indiana:

1. Which roads support single industries, group industries or all industries?
2. Which roads help support Indiana industries that are nationally competitive?
3. Which industries are supported by a specific road?

## HOW DOES IT WORK?

EDAIR is a comprehensive, interactive tool that provides access to current and historical data to gain localized information on Indiana's economic strengths.

**10+**  
economic  
categories

**34**  
industry  
subsectors

**8**  
strategic Advanced  
Industries groups

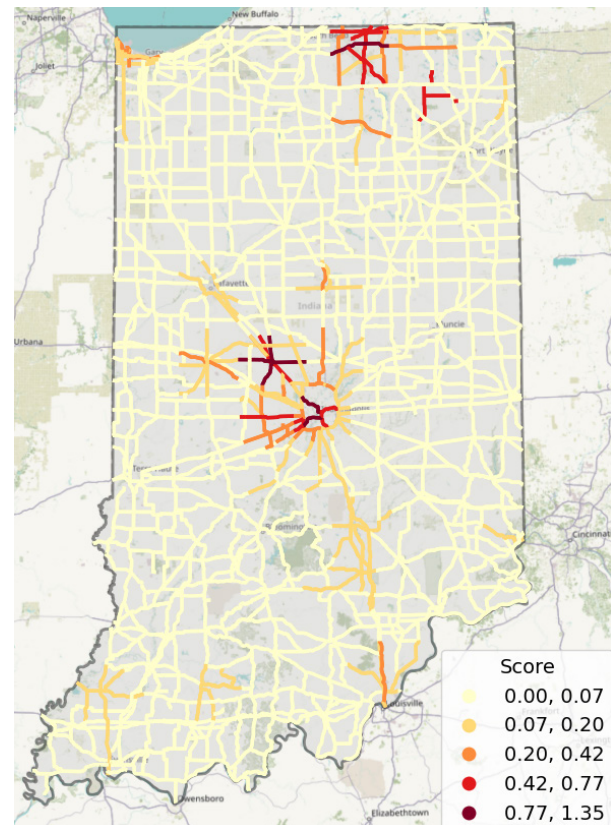
EDAIR ranks roads by combining the economic indicators with the distance between roads and industries.

## RESULTS

The results measure the relative importance of roadways for selected industries.

**INDOT:** will use the EDAIR results to predict the relative return on investment of potential roadway projects.

**INDUSTRY PARTNERS:** can use EDAIR to develop strategic plans for economic development, update their supply chain analysis procedures and investigate future partnership opportunities.



This map shows the level of support that roads provide for Indiana's advanced manufacturing industries. It indicates that the highest concentration of advanced manufacturing industries is in Central and North Central Indiana. It also highlights the roads that provide the most support to these industries.