

# Transitions

## *Population and Economic Trends*

Prepared for: Envision Littleton

Chris Akers

State Demography Office

Colorado Department of Local Affairs

February 2019

<https://demography.dola.colorado.gov/>



**COLORADO**  
Department of Local Affairs

# *Why Does Economics / Demographics Matter?*

- **What, Why, When, How Much, Where?**
- **People** - anticipate age, race, labor force participation, etc. to understand **who** will demand **what** public services
- **Housing demand / supply** - prices, types, locations
- **Job numbers / Characteristics** - Types, Skills, secondary effects
- **Incomes** - Salaries & Wages, pensions, social transfers, trends
- **Economic Drivers** - What will the State, Regions, & Counties' economic profiles resemble in 10, 20, 30 years?
- **Schools, Healthcare, Transport** - What infrastructure will be needed? Where will the revenues come from?



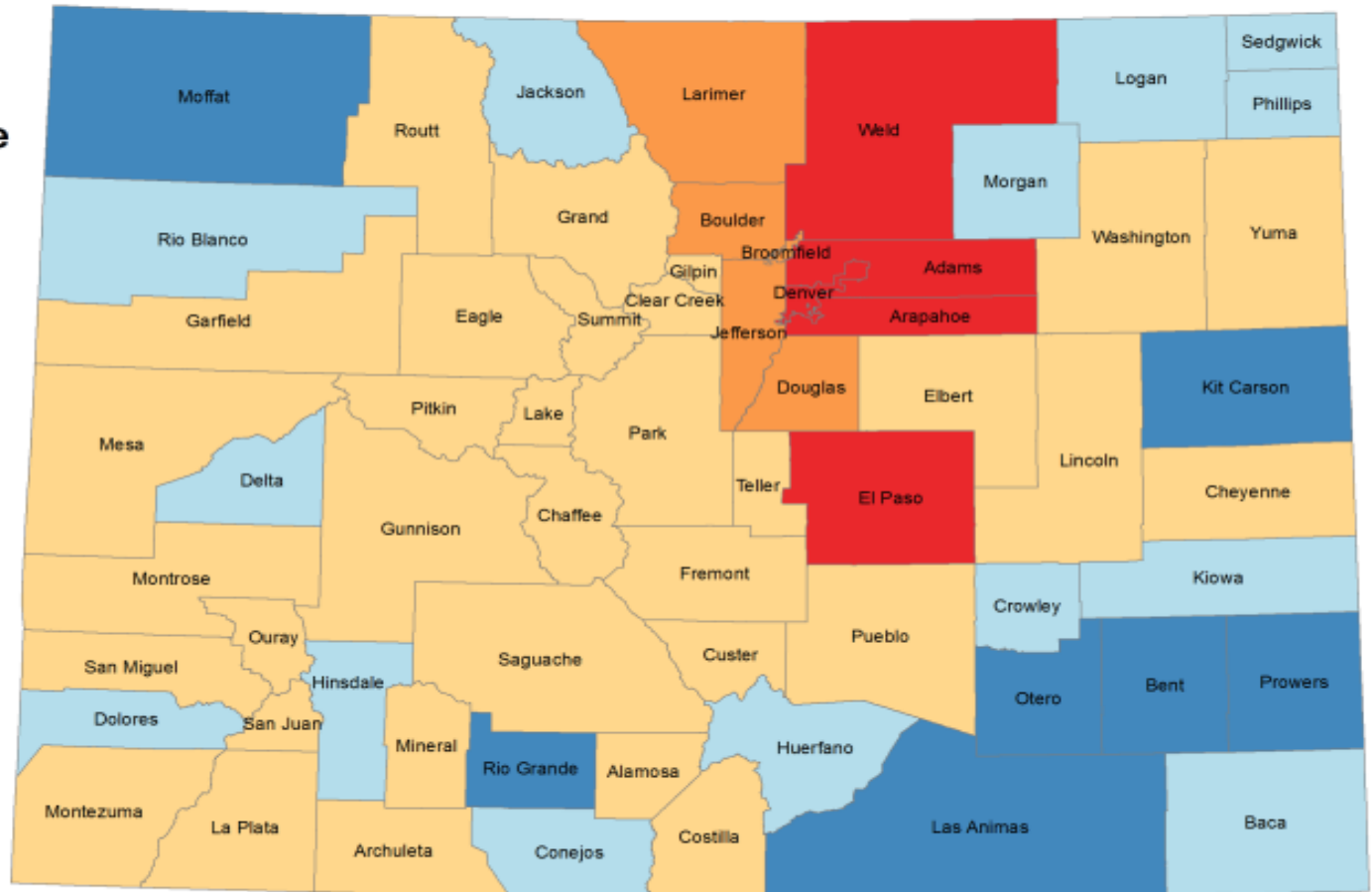
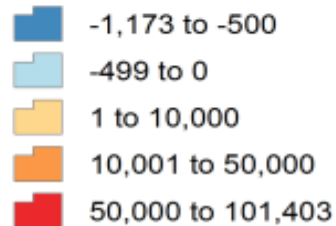
# *Big Picture - 2017-2018 Pop Change*

- US - 327.2 million, + 2.02 million or .6%
- Colorado - 5,695,564
- Ranked 7<sup>th</sup> fastest 1.4% - NV, ID, UT, AZ, FL, WA
- 8<sup>th</sup> in total growth **79,662** - TX, FL, CA, AZ, NC, WA, GA
- Growth of 666,200 since 2010 and Ave. Annual Growth rate of 1.6% or 83,000/yr
- Littleton 2010-2017 +5,500 or 1.8% Ave. Annual Growth rate



# Colorado: Total Population Change 2010 - 2017

## Population Change

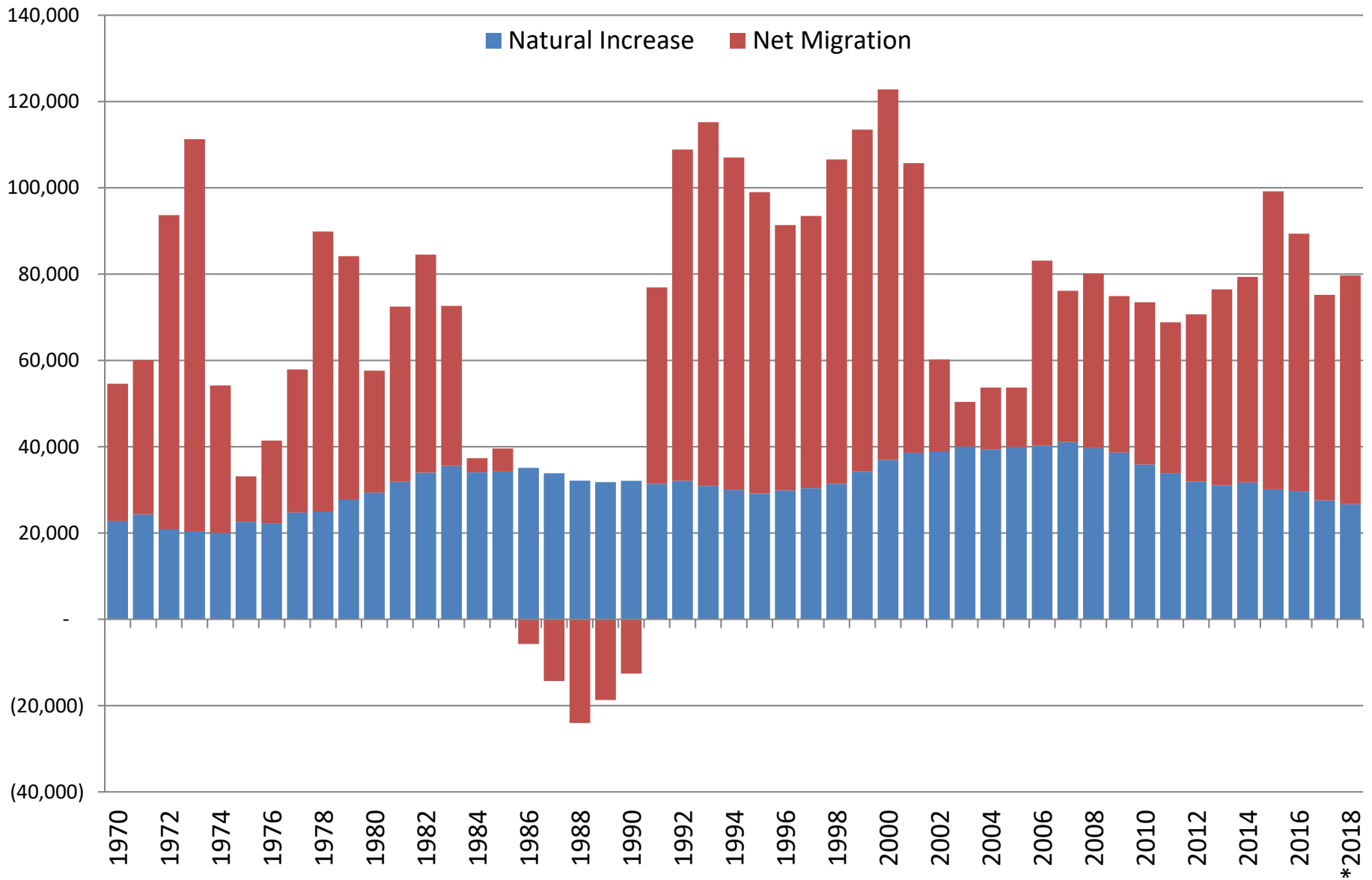


Colorado State Demography Office, 03/22/2018



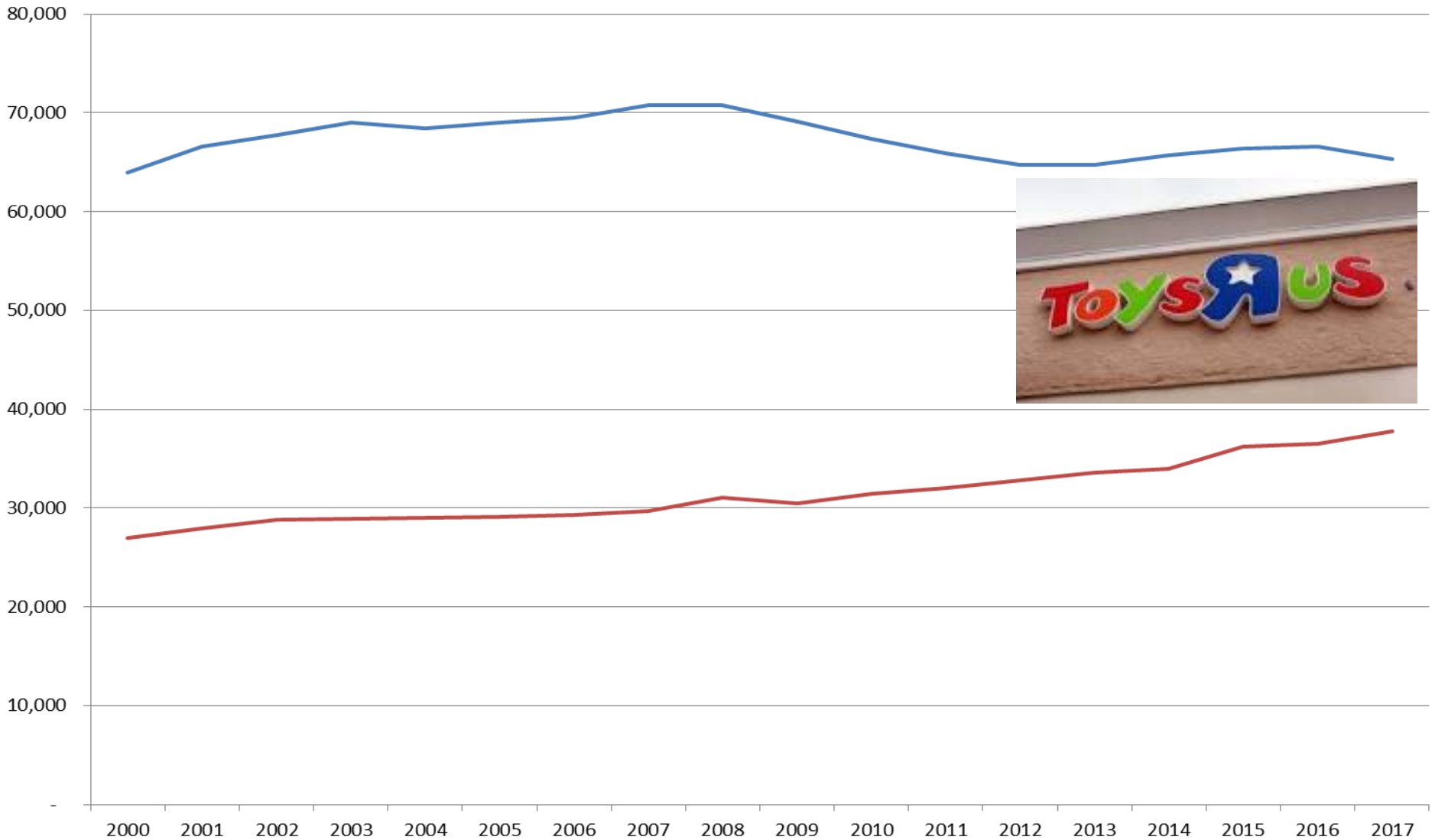
**COLORADO**  
Department of Local Affairs

# Components of Population Change 1970-2018

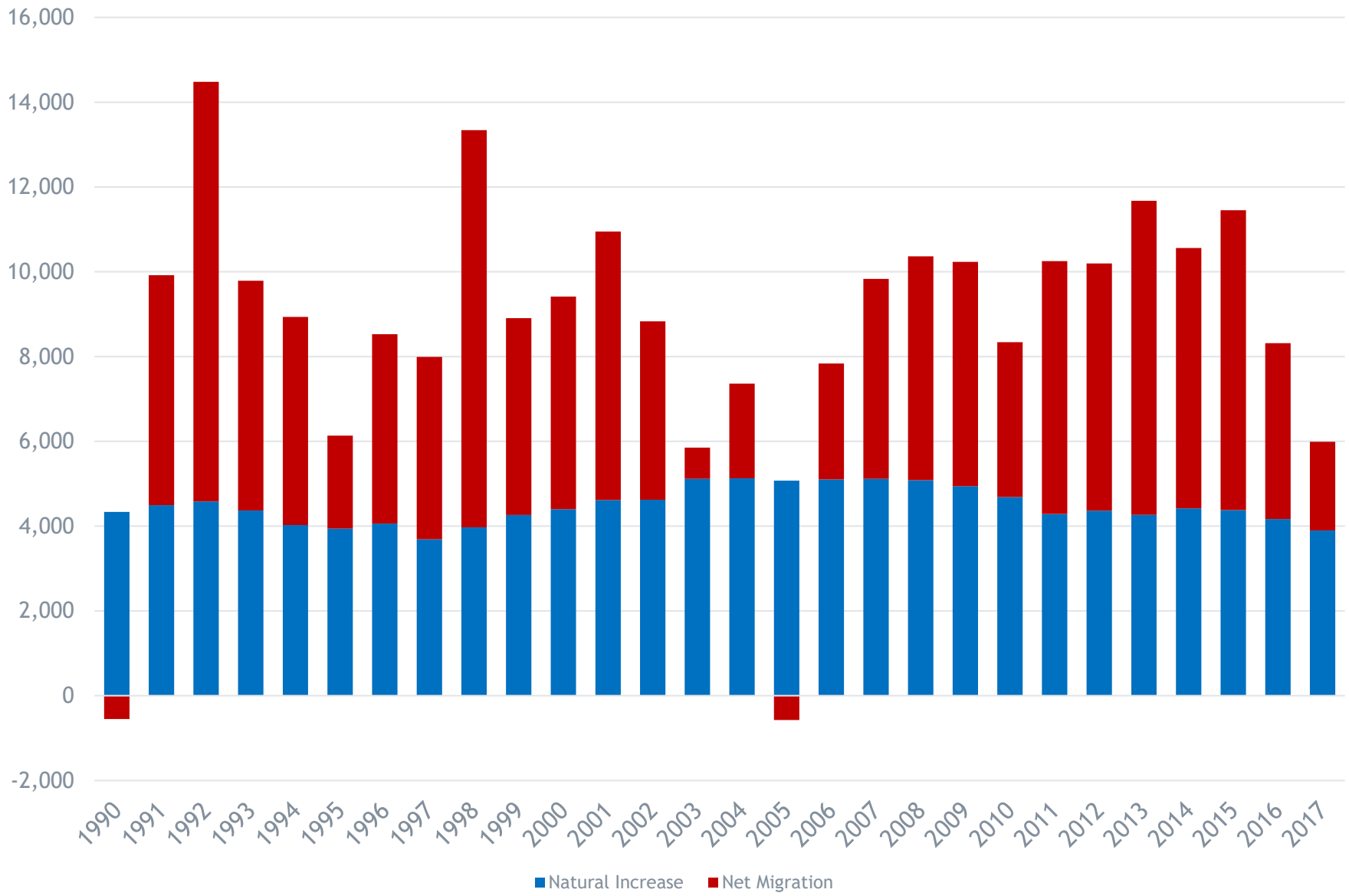


# Colorado Births and Deaths

— Births — Deaths



## Arapahoe County Components of Change



# Population Change by Place

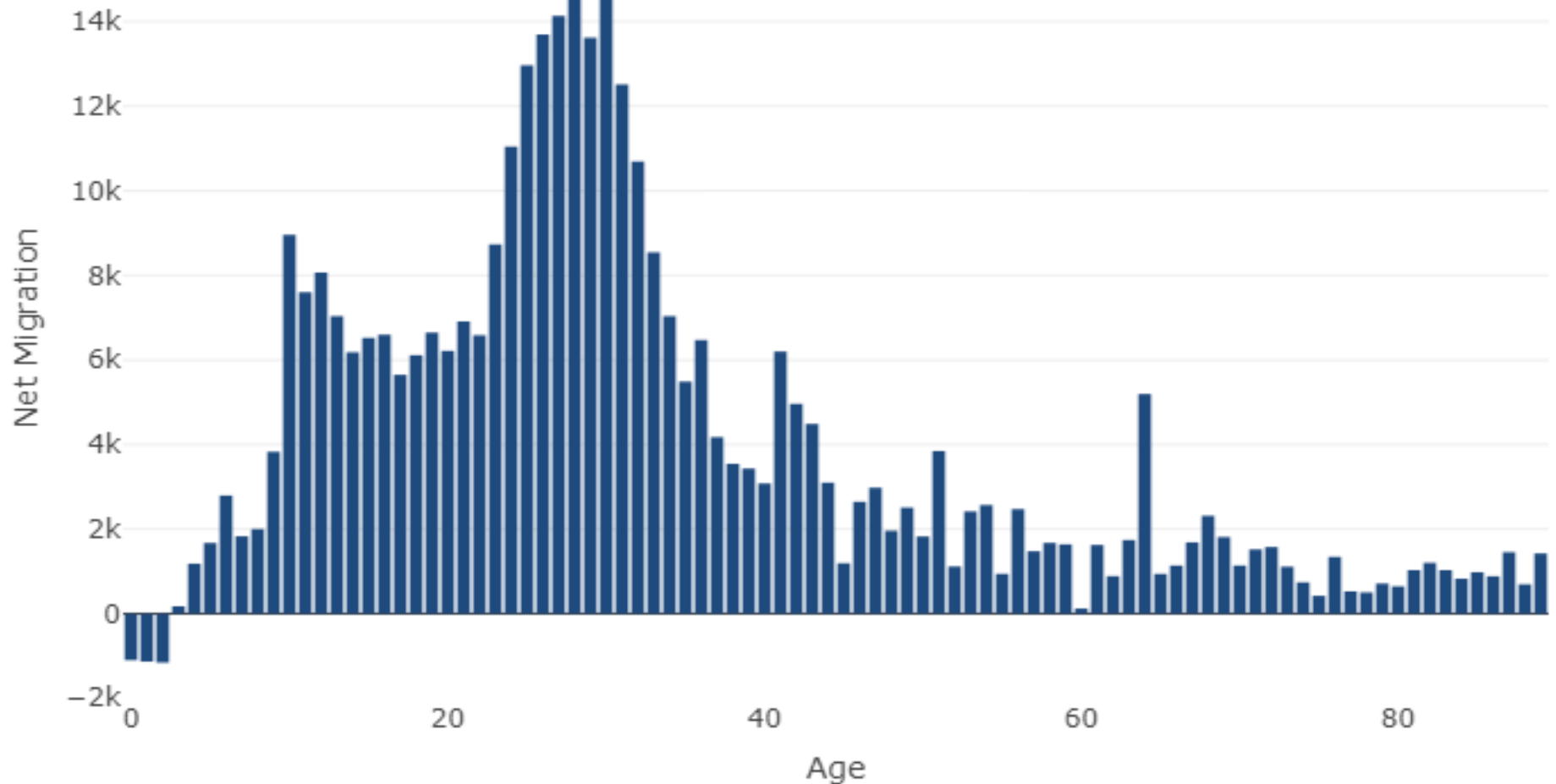
	2010	2014	2015	2016	2017	Ch. 2010-17	Ann. Ave. % Change
ARAPAHOE COUNTY	574,819	617,498	628,951	637,266	643,257	68,438	1.6%
Aurora (Part)	286,393	306,862	311,773	314,261	317,802	31,409	1.5%
Bennett (Part)	354	371	376	378	375	21	0.8%
Bow Mar (Part)	591	632	648	668	662	71	1.6%
Centennial	101,398	107,263	108,725	109,356	110,319	8,921	1.2%
Cherry Hills Village	6,013	6,430	6,535	6,617	6,601	588	1.3%
Columbine Valley	1,261	1,341	1,403	1,445	1,474	213	2.3%
Deer Trail	548	581	615	689	696	148	3.5%
Englewood	30,374	32,466	32,883	34,035	34,283	3,909	1.7%
Foxfield	691	764	773	780	774	83	1.6%
Glendale	4,200	4,960	5,018	5,044	5,003	803	2.5%
Greenwood Village	13,987	15,335	16,031	16,160	16,072	2,085	2.0%
<b>Littleton (Part)</b>	<b>39,613</b>	<b>42,096</b>	<b>43,521</b>	<b>43,733</b>	<b>44,887</b>	<b>5,274</b>	<b>1.8%</b>
Sheridan	5,686	7,663	8,174	8,663	8,934	3,248	6.7%
Unincorp. Area	83,710	90,734	92,476	95,437	95,375	11,665	1.9%
<b>Littleton (Total)</b>	<b>42,034</b>	<b>44,616</b>	<b>46,094</b>	<b>46,353</b>	<b>47,588</b>	<b>5,554</b>	<b>1.8%</b>





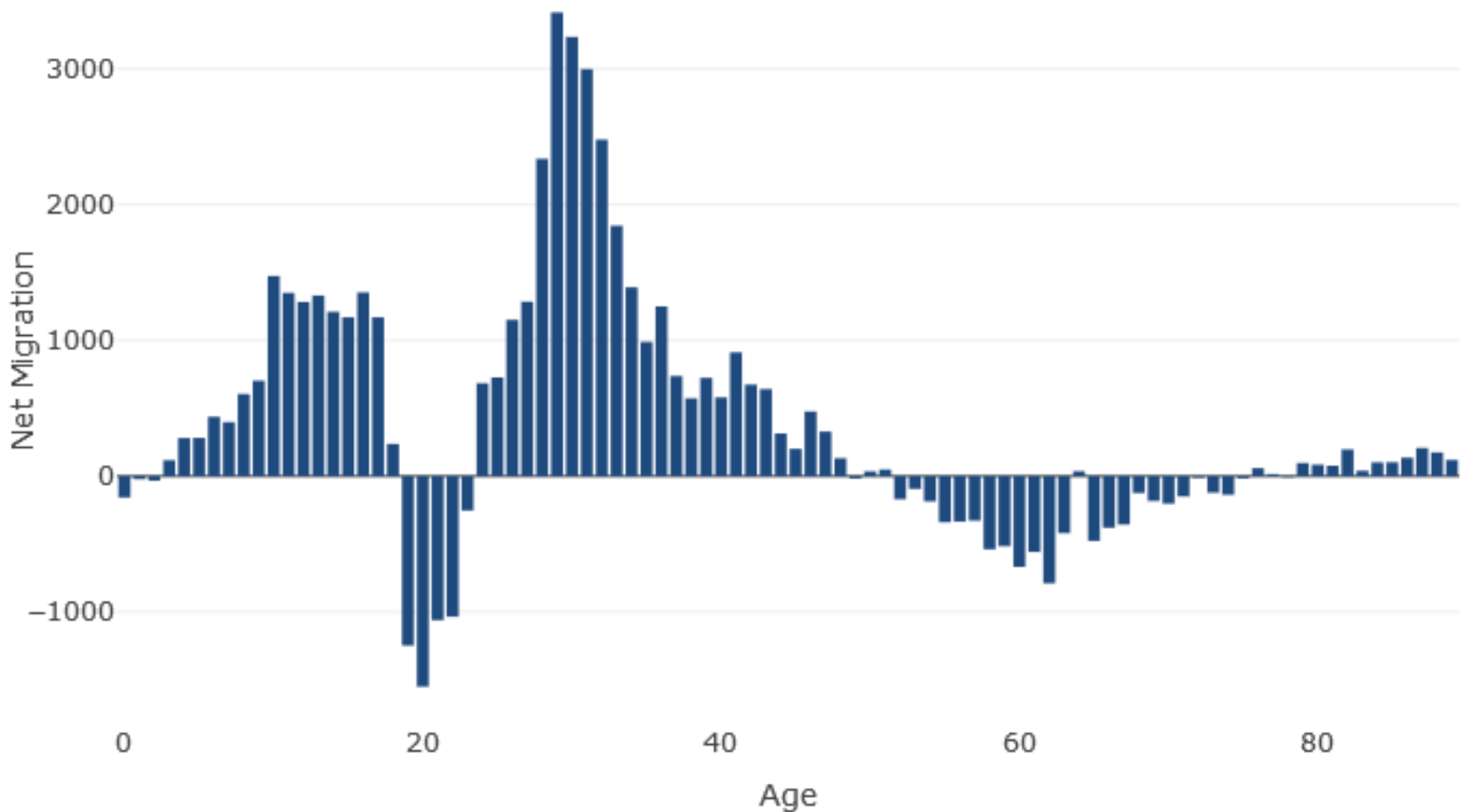
# Colorado

Net Migration by Age, 2000 to 2010

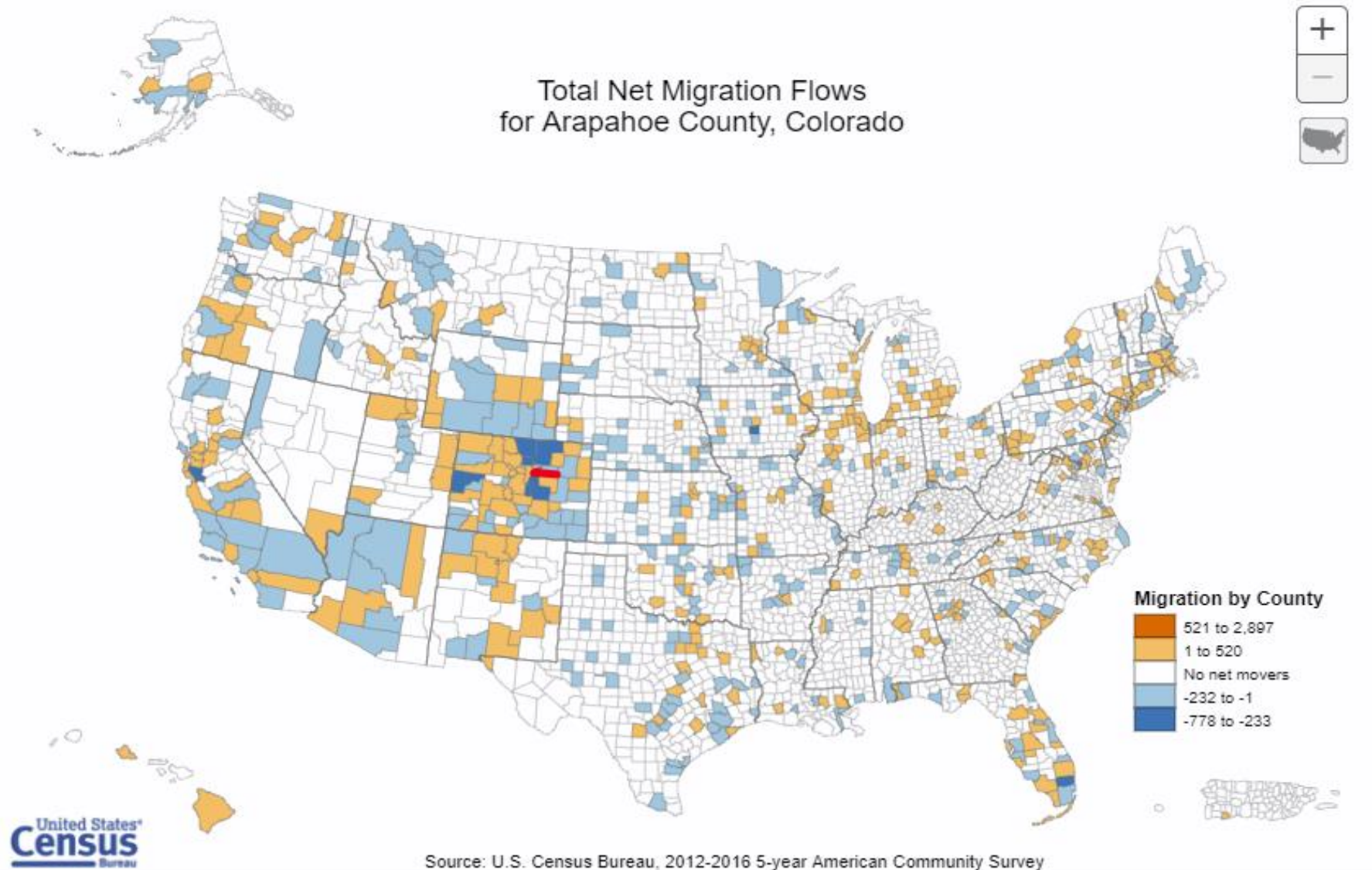


# Arapahoe

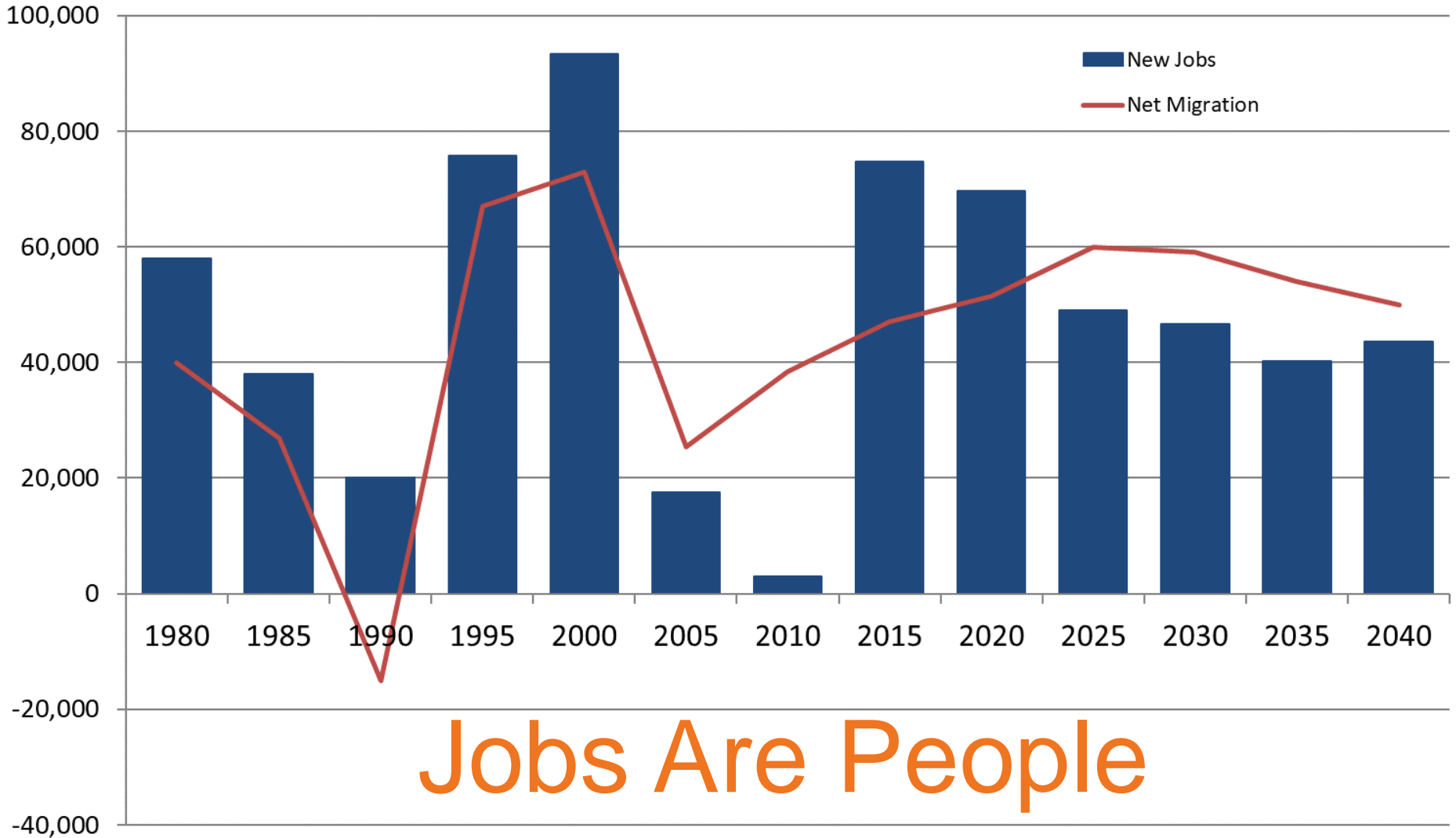
Net Migration by Age, 2000 to 2010



# Migration locations



# Colorado New Jobs and Net Migration

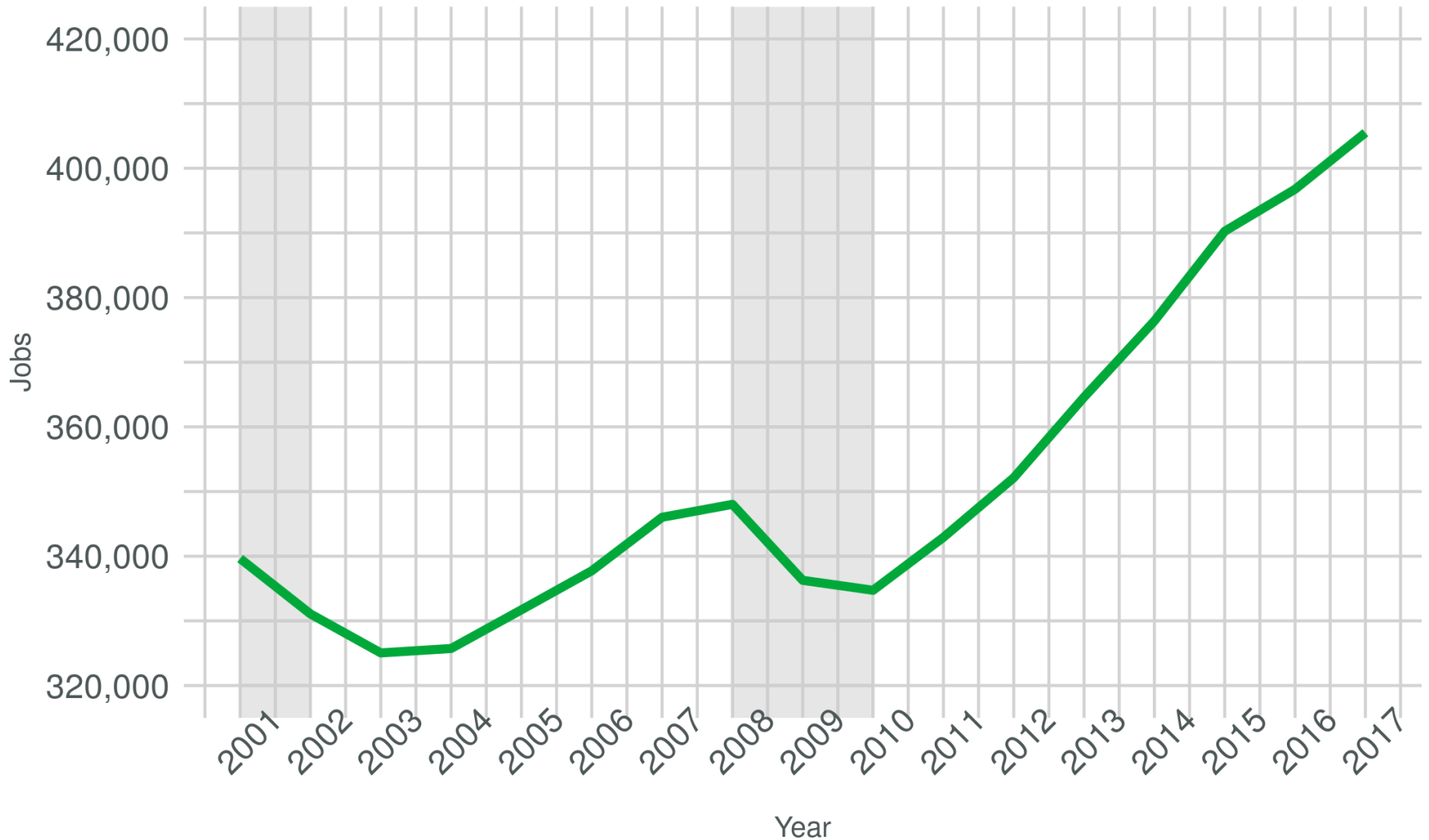


Jobs Are People



# Total Estimated Jobs, 2001 to 2017

Arapahoe County



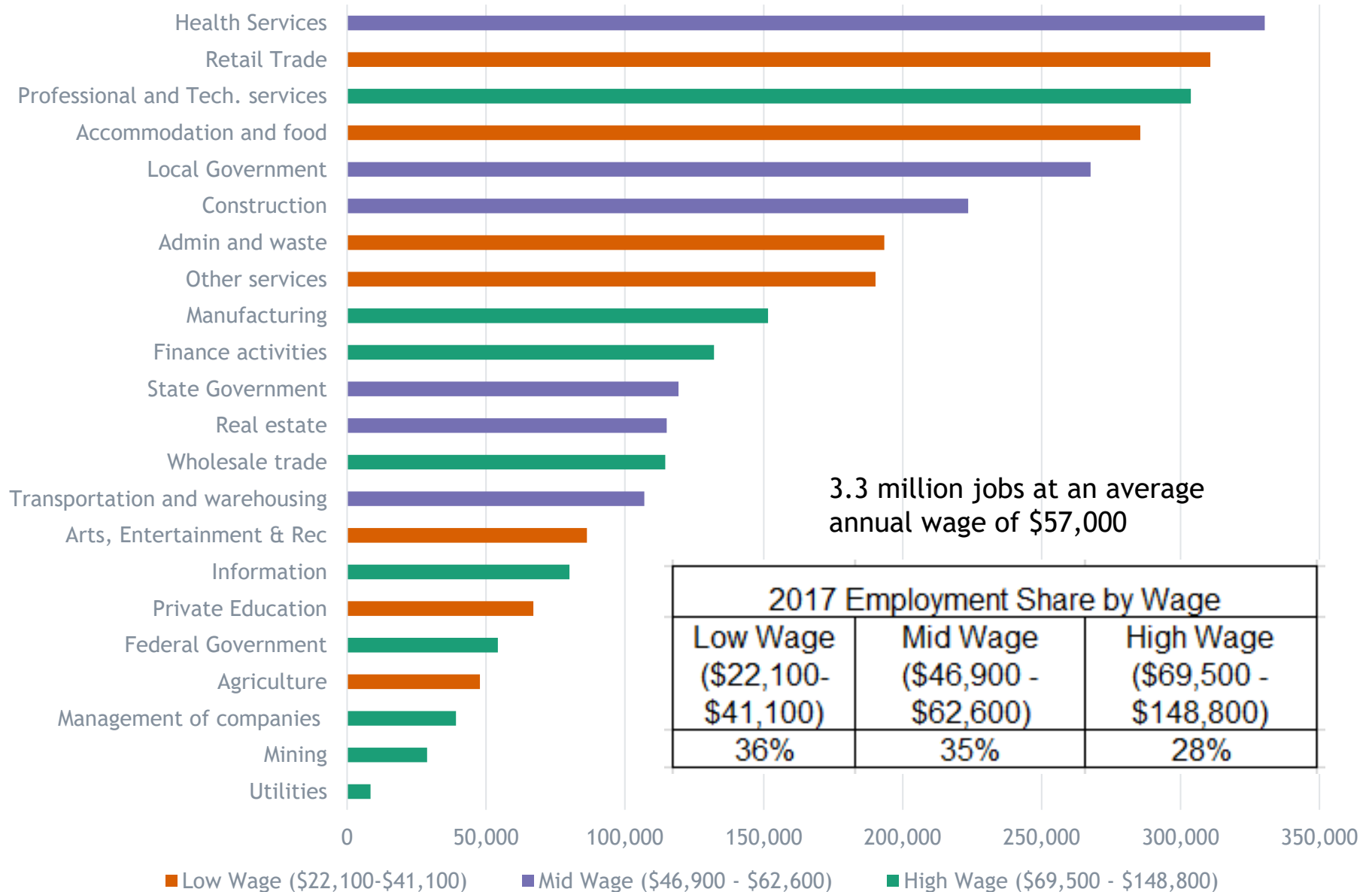
Source: State Demography Office, Print Date: 02/20/2019

Note: Grey shading represents beginning to bottom of U.S. recessions

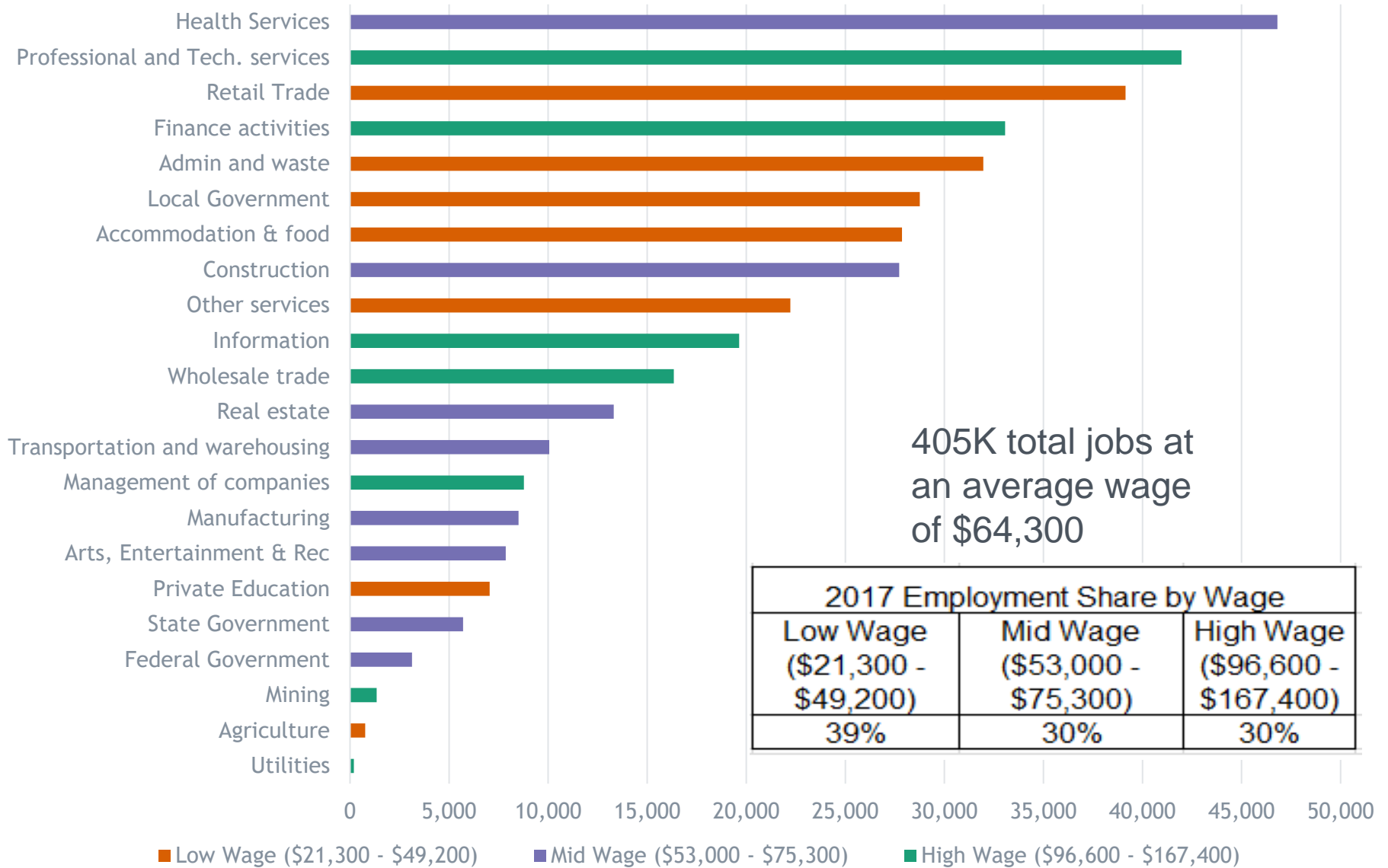


**COLORADO**  
Department of Local Affairs

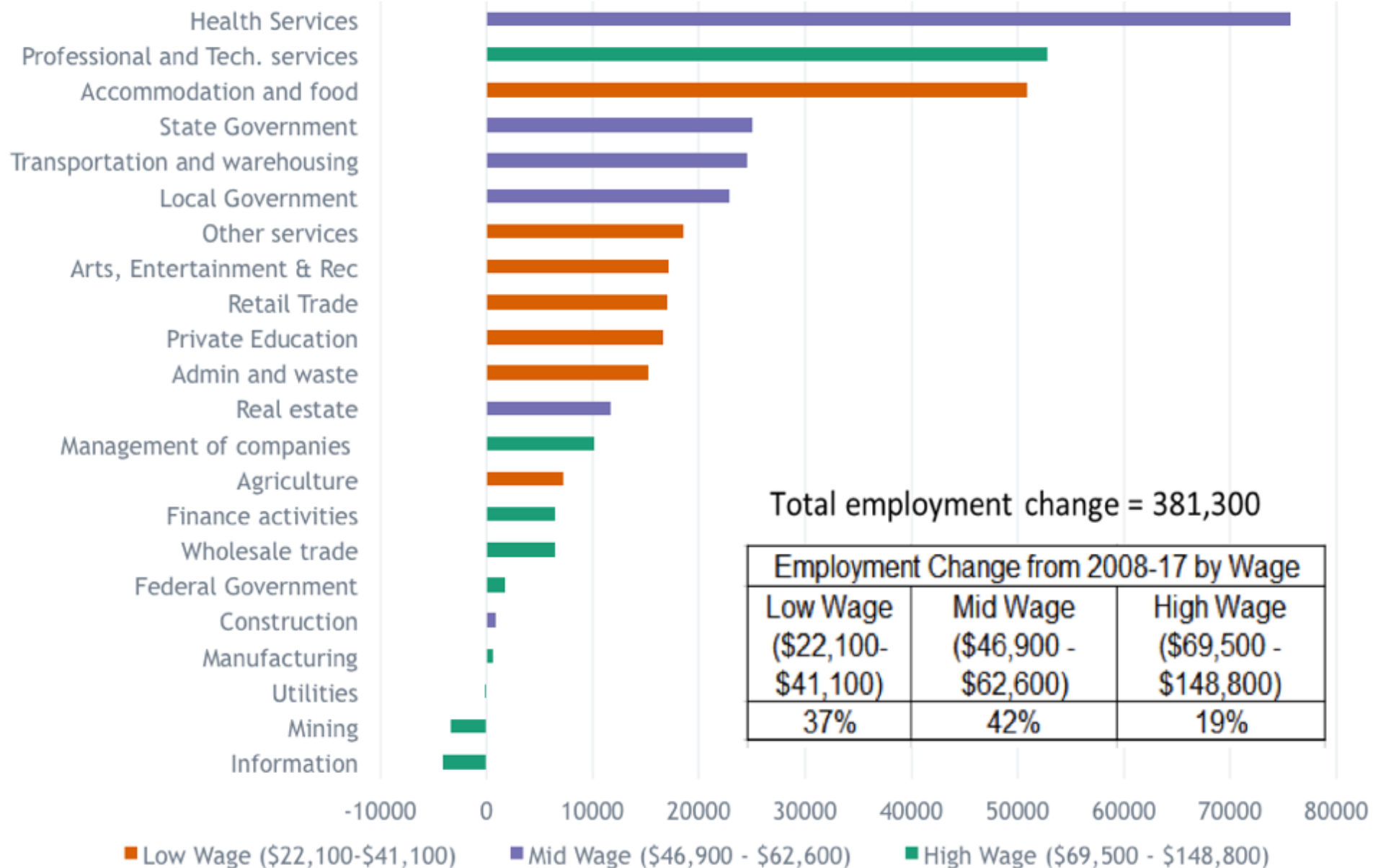
## Colorado 2017 Total Employment by Industry & Wage



## Arapahoe County 2017 Employment by Industry & Wage

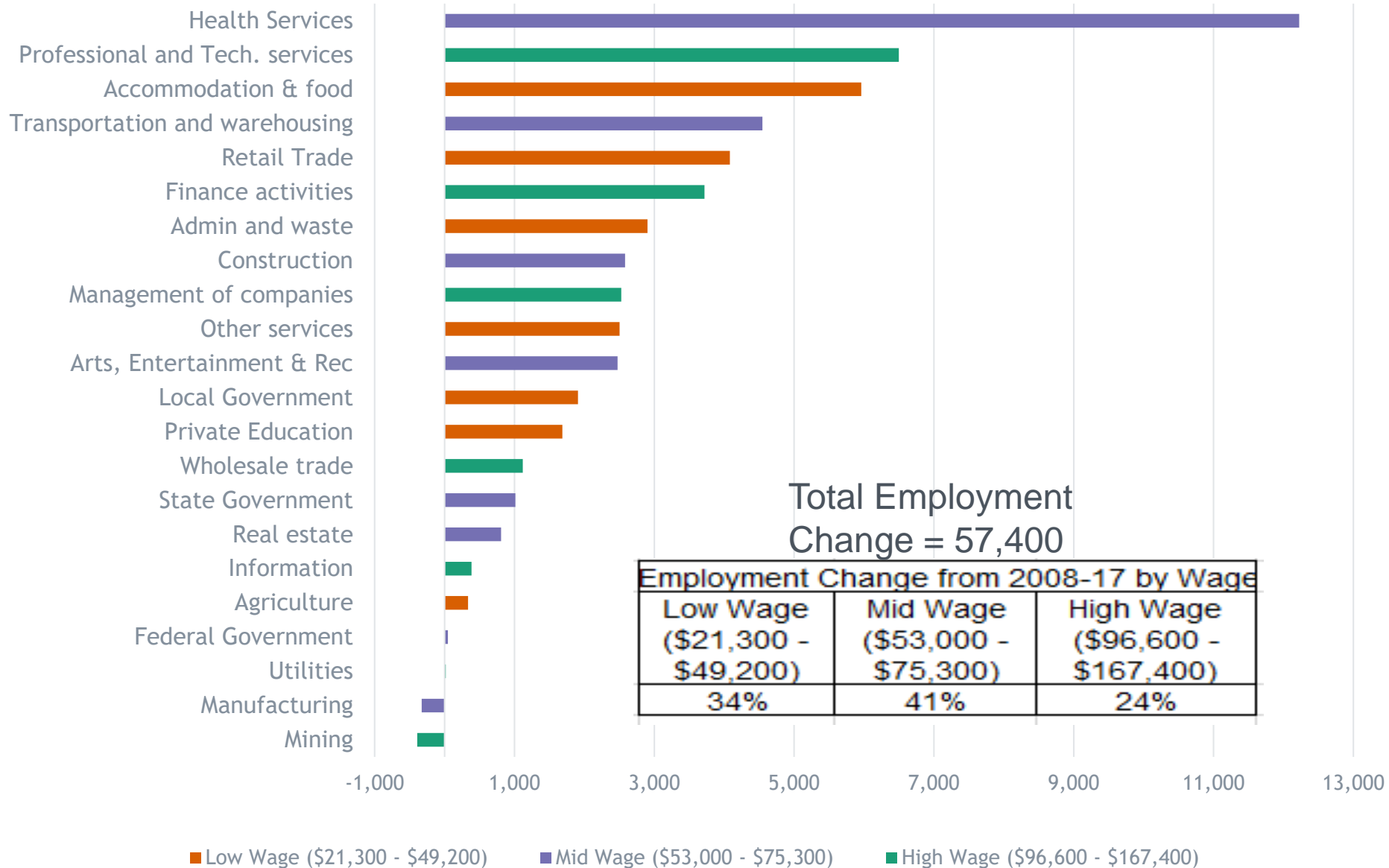


## Colorado Employment Change from 2008 to 2017

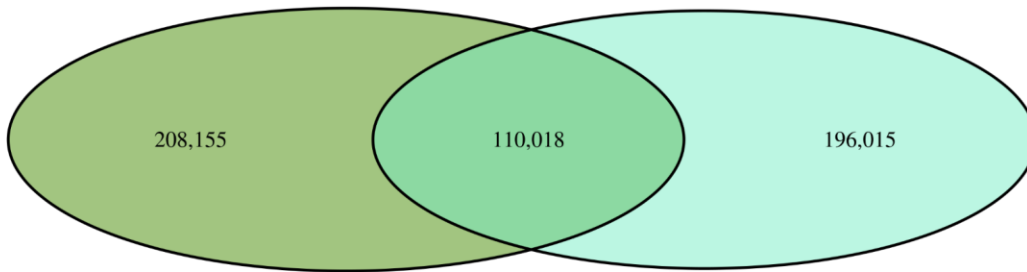




# Arapahoe County Employment change from 2008 to 2017



# Commuting



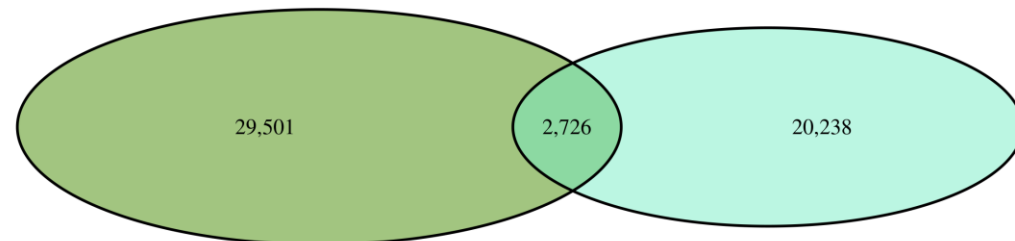
- Employees in Arapahoe County living elsewhere
- Residents of Arapahoe County working elsewhere
- Employed and Live in Arapahoe County

Source: U.S. Census Bureau On the Map, Print Date: 02/20/2019

	Count	Share
<b>All Places (Cities, CDPs, etc.)</b>	<b>22,961</b>	<b>100.0%</b>
Denver city, CO	6,439	28.0%
Littleton city, CO	2,726	11.9%
Centennial city, CO	1,474	6.4%
Lakewood city, CO	1,309	5.7%
Aurora city, CO	1,119	4.9%
Greenwood Village city, CO	1,016	4.4%
Englewood city, CO	947	4.1%
Highlands Ranch CDP, CO	847	3.7%
Colorado Springs city, CO	385	1.7%
Lone Tree city, CO	345	1.5%
<b>All Other Locations</b>	<b>6,354</b>	<b>27.7%</b>

Littleton  
All Jobs, 2015

	Count	Share
<b>All Places (Cities, CDPs, etc.)</b>	<b>32,227</b>	<b>100.0%</b>
Denver city, CO	5,214	16.2%
Centennial city, CO	2,803	8.7%
Littleton city, CO	2,726	8.5%
Highlands Ranch CDP, CO	2,695	8.4%
Aurora city, CO	2,461	7.6%
Lakewood city, CO	1,379	4.3%
Ken Caryl CDP, CO	964	3.0%
Columbine CDP, CO	936	2.9%
Englewood city, CO	906	2.8%
Castle Rock town, CO	798	2.5%
<b>All Other Locations</b>	<b>11,345</b>	<b>35.2%</b>



- Employees in Littleton living elsewhere
- Residents of Littleton working elsewhere
- Employed and Live in Littleton

Source: U.S. Census Bureau On the Map, Print Date: 02/20/2019

# *Census 2020 - April 1<sup>st</sup>.*

- Important, Safe, Easy! - 11 Questions, 10 mins.
- Representation, Funding (\$2,300 per person per year in federal funding), and Data/Information.
- Census will be: Online, Phone, Mail, In Person (last resort)
- Our Ask:
  - Become familiar with Census 2020
  - Encourage friends and family
  - Let SDO know about meetings or groups who would be interested in learning more,
  - Let SDO know about concerns or questions.



# *Why is the Census 2020 important to Colorado and its Communities?*

\$900 billion in federal funding allocated nationally based on Census population counts

Estimated \$2,300 per person per year in Colorado or over \$13.1 billion

- Senior services (Medicare)
- Public libraries
- Health services (Medicaid)
- Community centers
- Road improvements
- Public Housing (Section 8)
- Title 1 Grants to Local Education Agencies
- Programs for Veterans
- Community colleges
- Tuition assistance
- Women, Infants & Children (WIC)
- Public Assistance (SNAP)
- School Lunch
- Health Centers



# AGE

## Why?

Preferences

Housing

Income

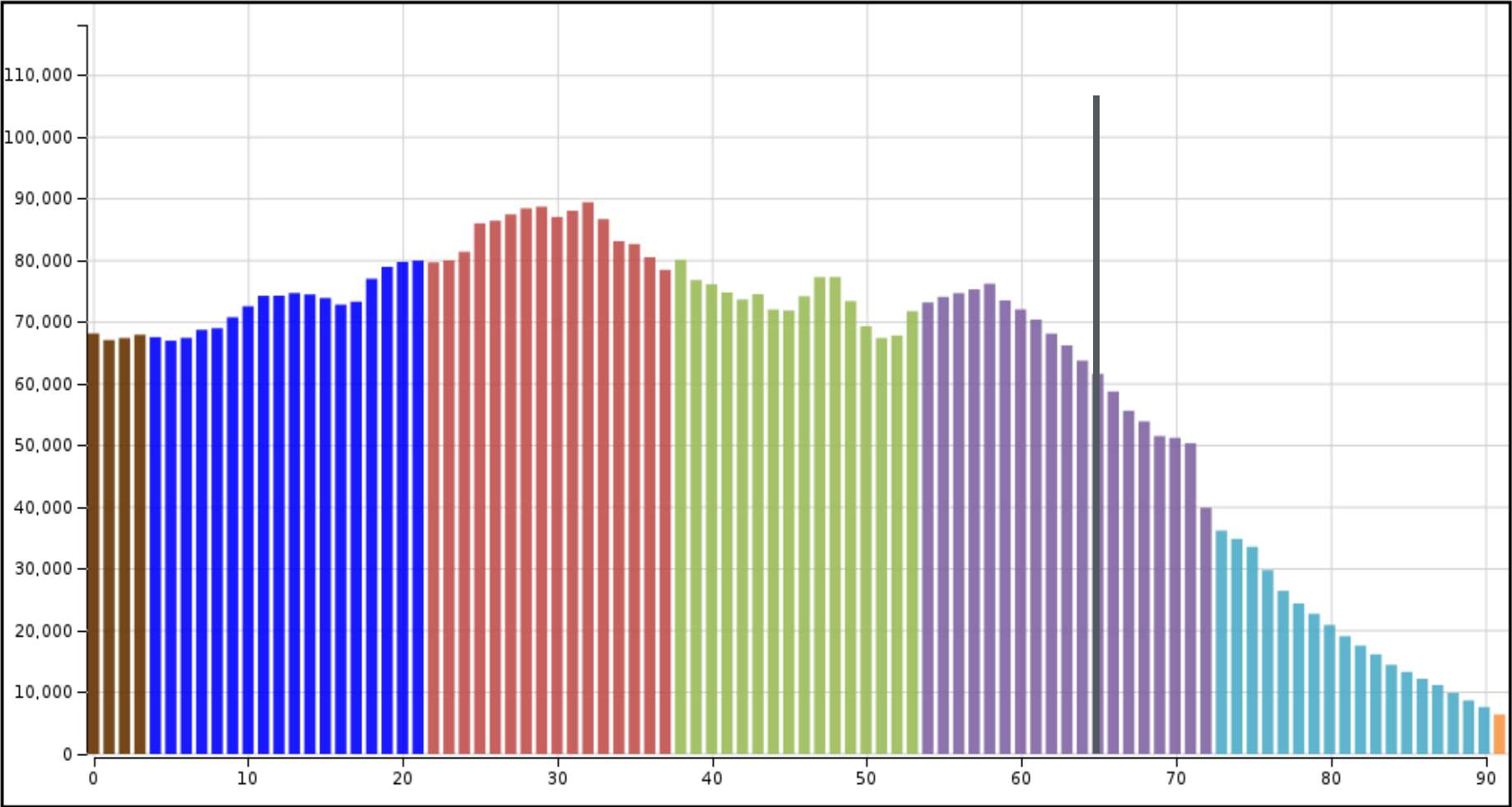
Service Demands

Labor Force



**COLORADO**  
Department of Local Affairs

# Colorado 2018

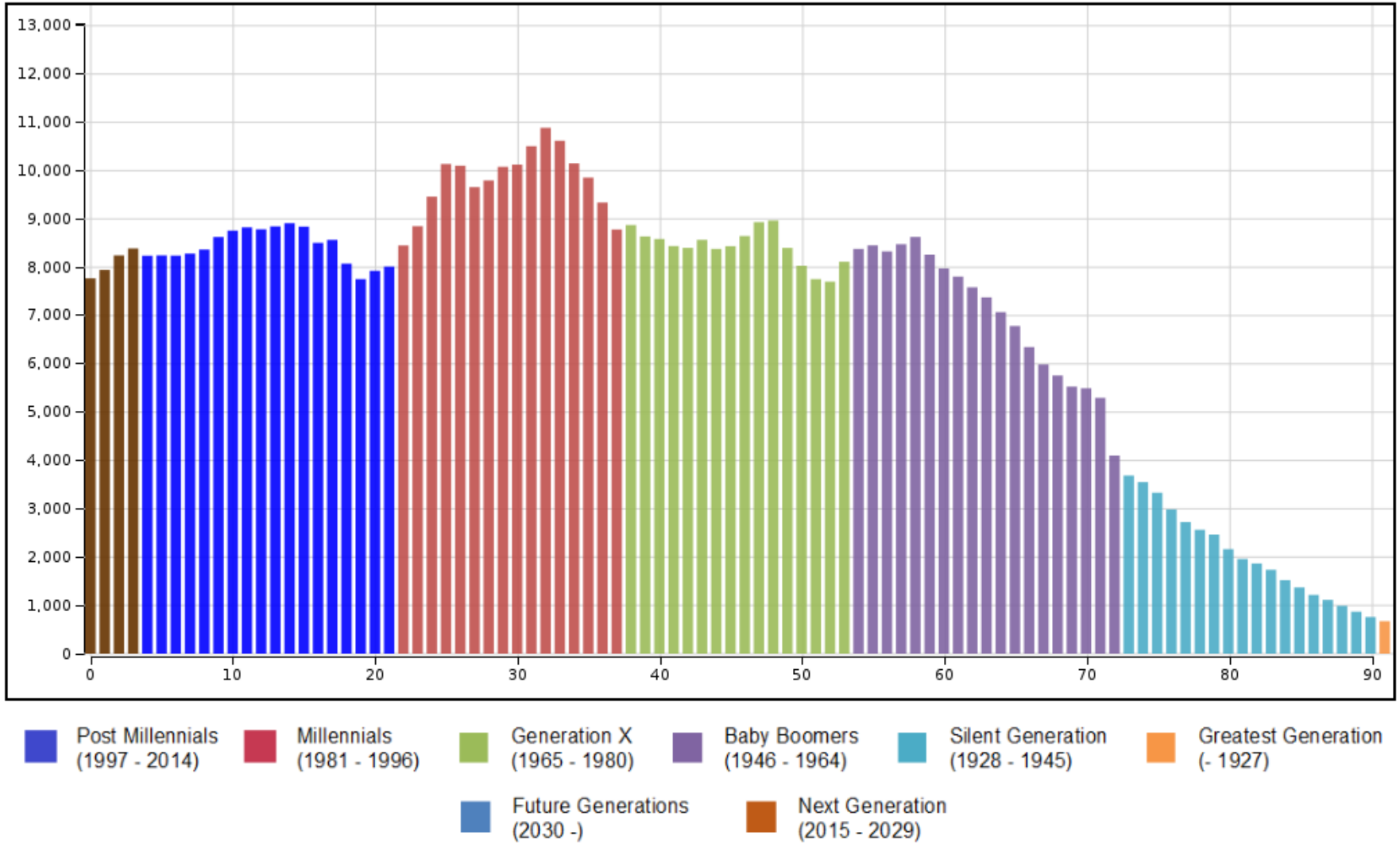


Post Millennials (1997 - 2014)   Millennials (1981 - 1996)   Generation X (1965 - 1980)   Baby Boomers (1946 - 1964)   Silent Generation (1928 - 1945)   Greatest Generation (- 1927)

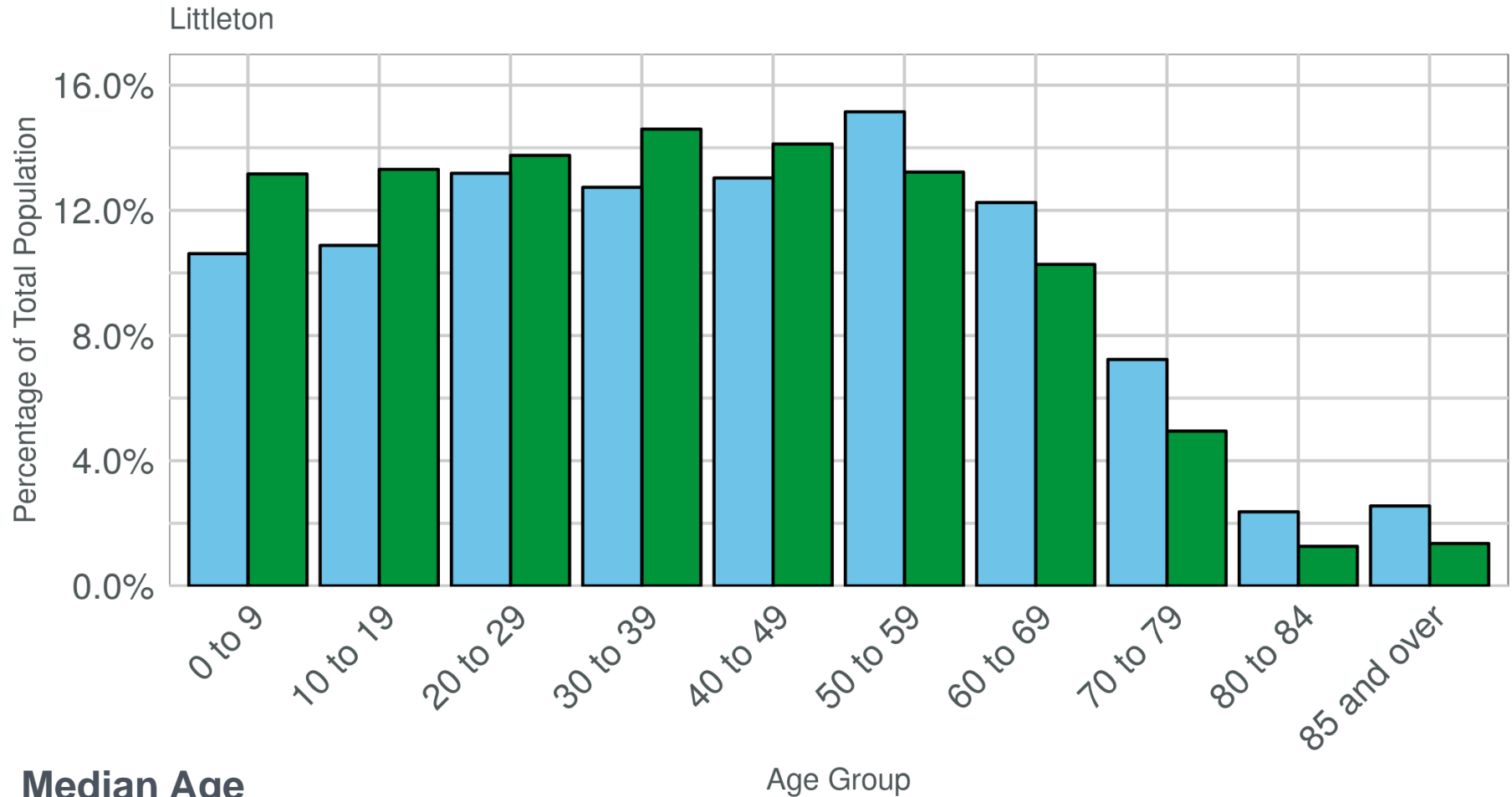
Future Generations   Next Generation



# Arapahoe County 2018



# Population Distribution by Age for 2017



**Median Age**

**CO – 36.5**

**Arapahoe – 36.4**

**Littleton – 42.2**

Source: U.S. Census Bureau, 2013-2017 American Community Survey, Print Date: 02/20/2019



**COLORADO**  
Department of Local Affairs

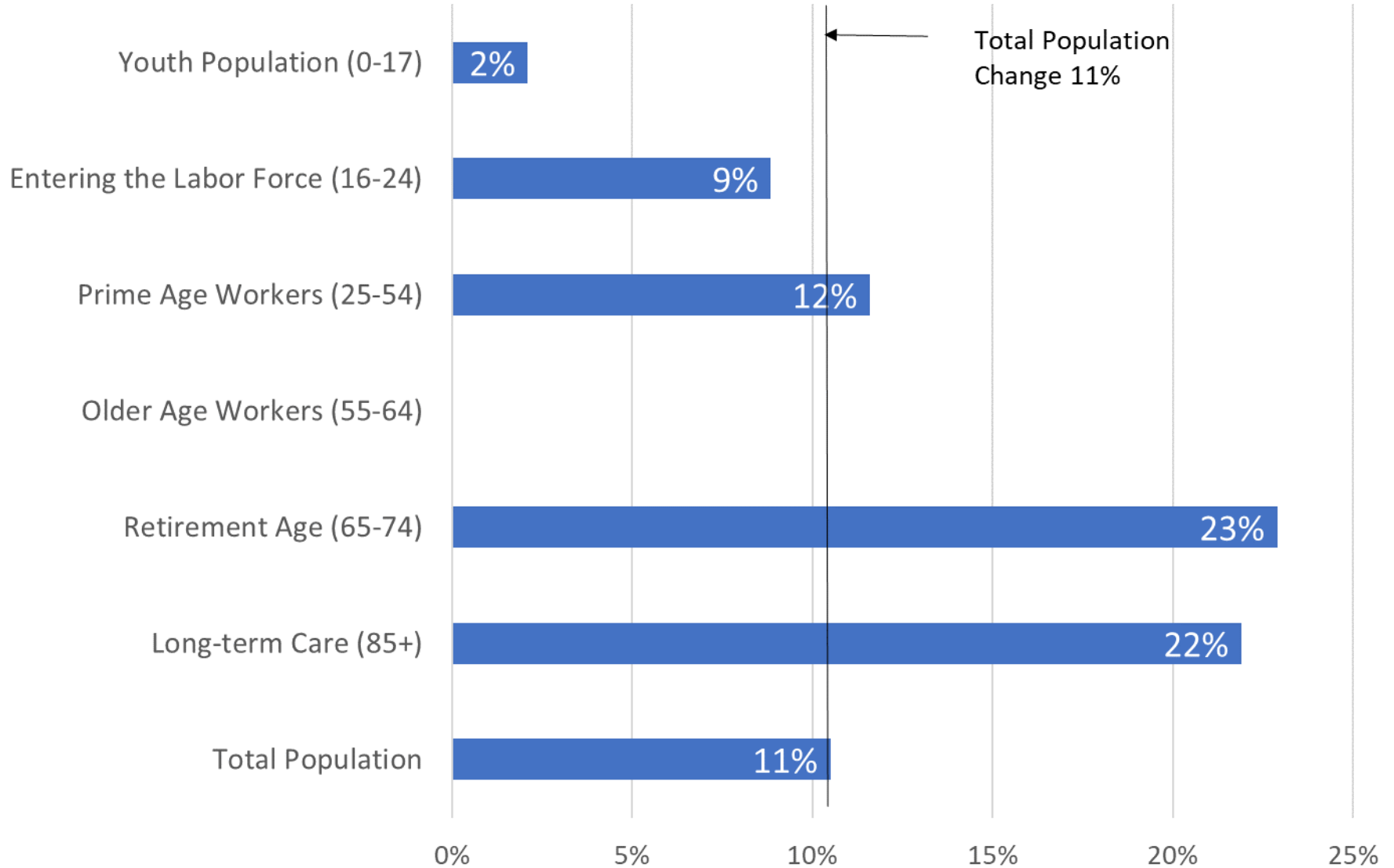


# *We are Aging Fast*

- Currently very few people over the age 65.
  - 6<sup>th</sup> lowest share of all states in US (14%) in 2017
  - 3<sup>rd</sup> fastest growing in the 65+
- Baby Boomers
  - Born 1946 - 1964
  - 1,206,000 Boomers in Colorado (21% of pop. in 2018)
- 2018 - 2030 Colorado's population 65+ will grow 806,000 to 1,201,000 (49%) (**primarily from aging**)
- Transition age distribution from “young” to more US average between 2018 and 2030.

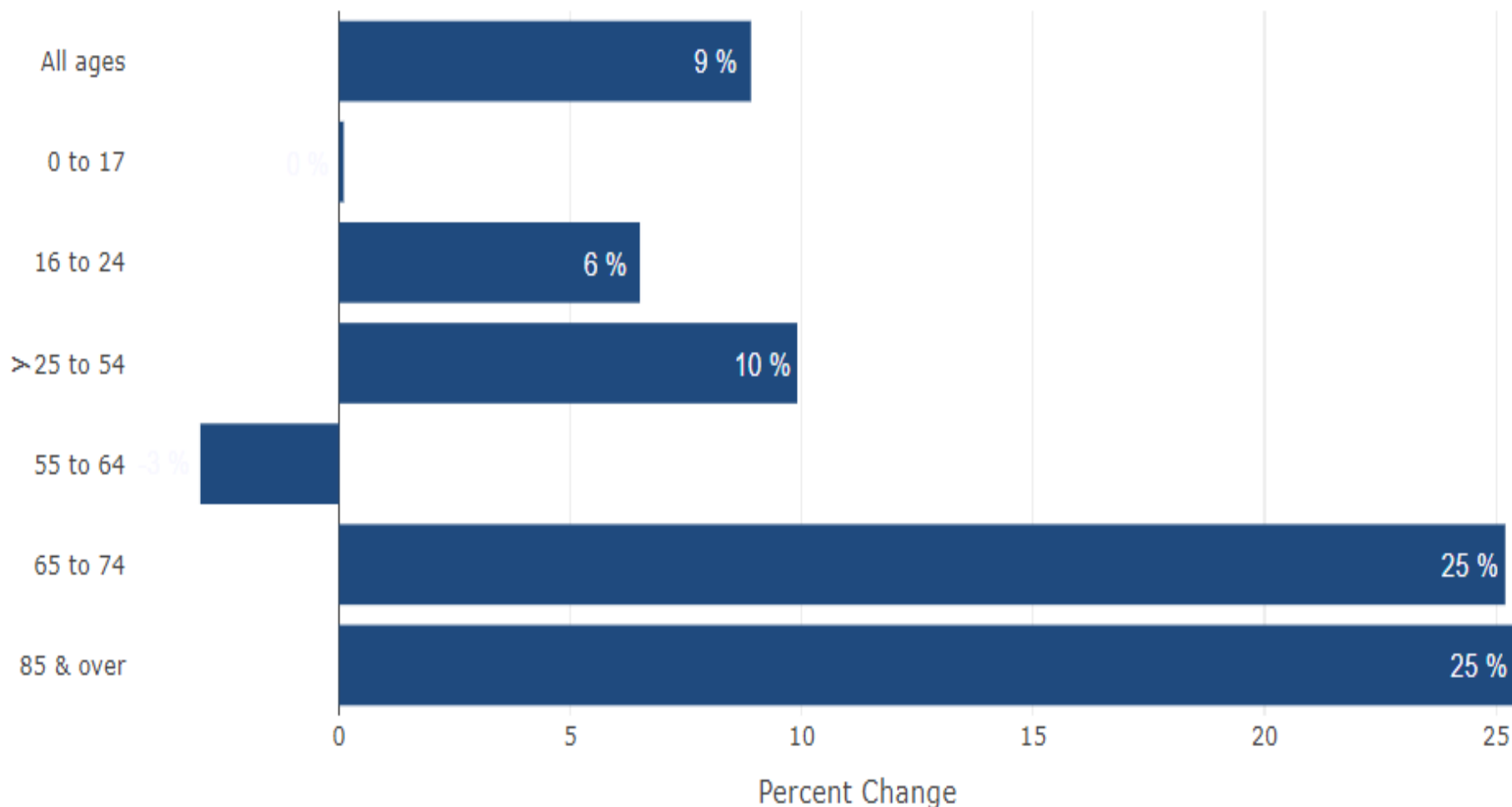


## Projected Change in Specific Age Group Populations in Colorado, 2018 to 2025



# Arapahoe County Aging

Projected Population Change by Age Group, 2018 to 2025



# *Aging Issues*

- Numbers
- Economic Driver - wealthier .... depends
  - Impact on occupational mix
- Labor Force
- Housing - Universal Design, sidewalks
  - All price levels and need levels, fewer movers.
- Income - Downward Pressure
- Health/Disabilities
- Transportation
- Public Finance - Downward Pressure
- Aging Plan - Make sure to have one.



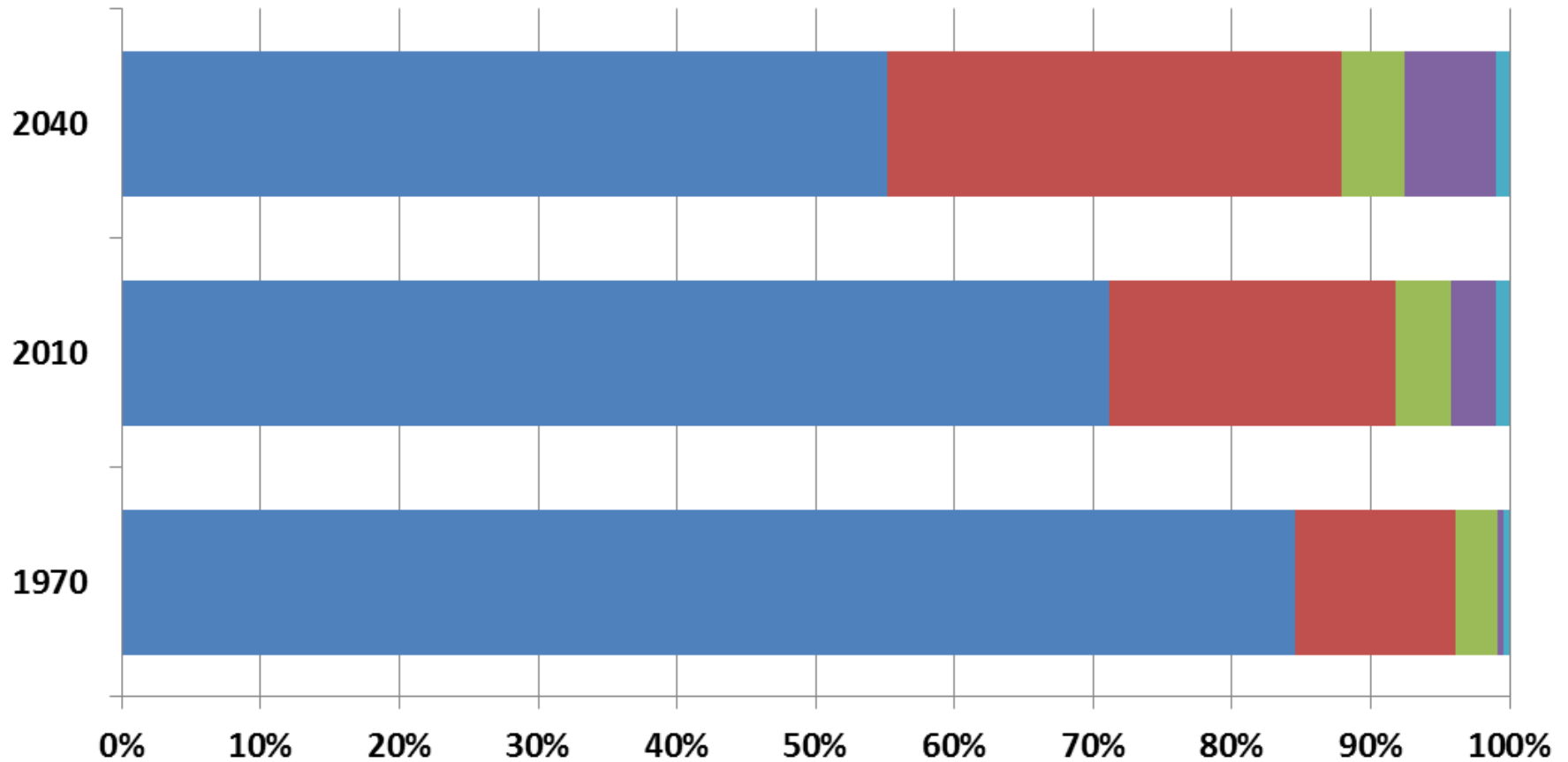
# Ethnicity/Race increasing



**COLORADO**  
Department of Local Affairs

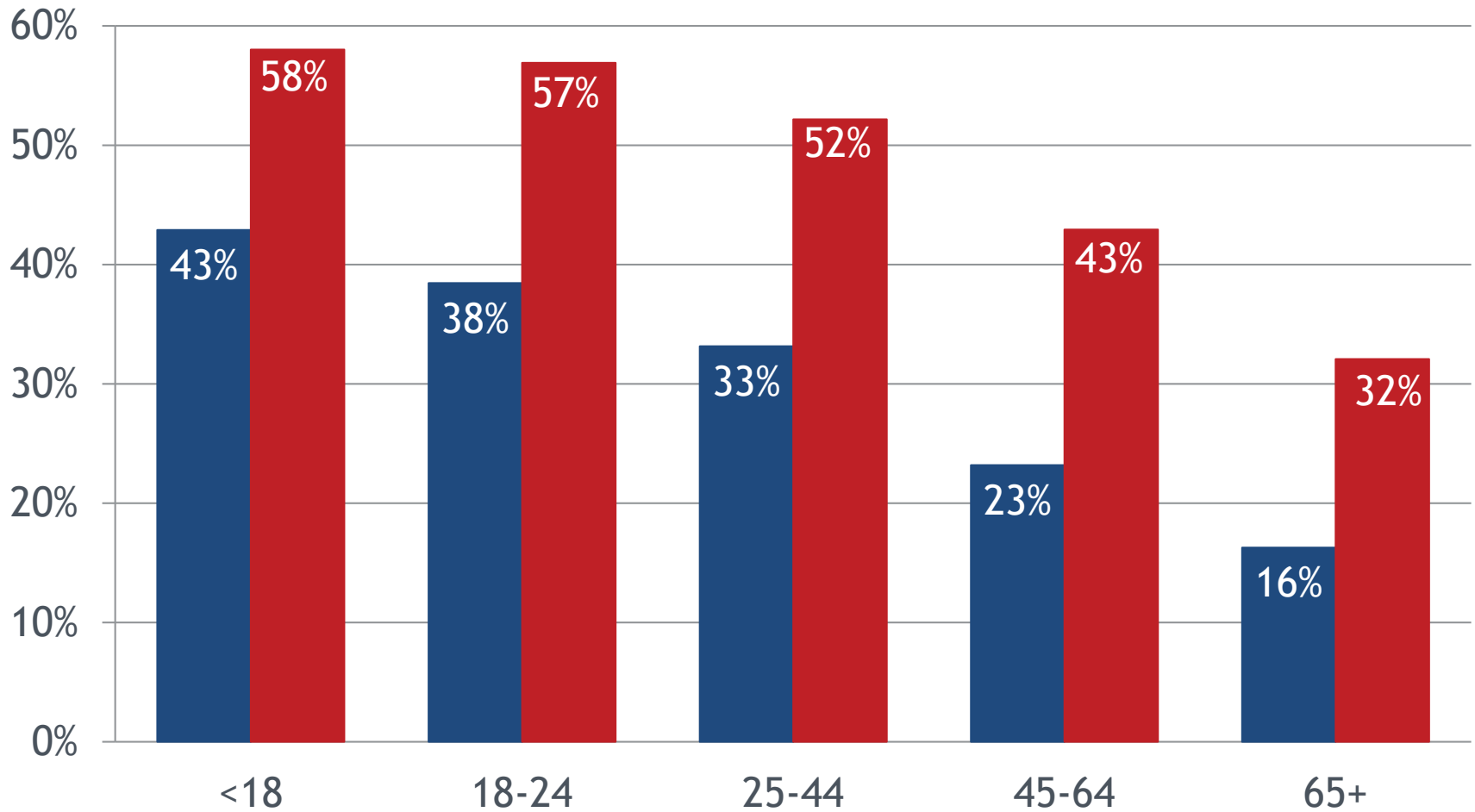
# Colorado Population by Race/Ethnicity

■ White not Hispanic ■ Hispanic ■ Black ■ Asian ■ American Indian

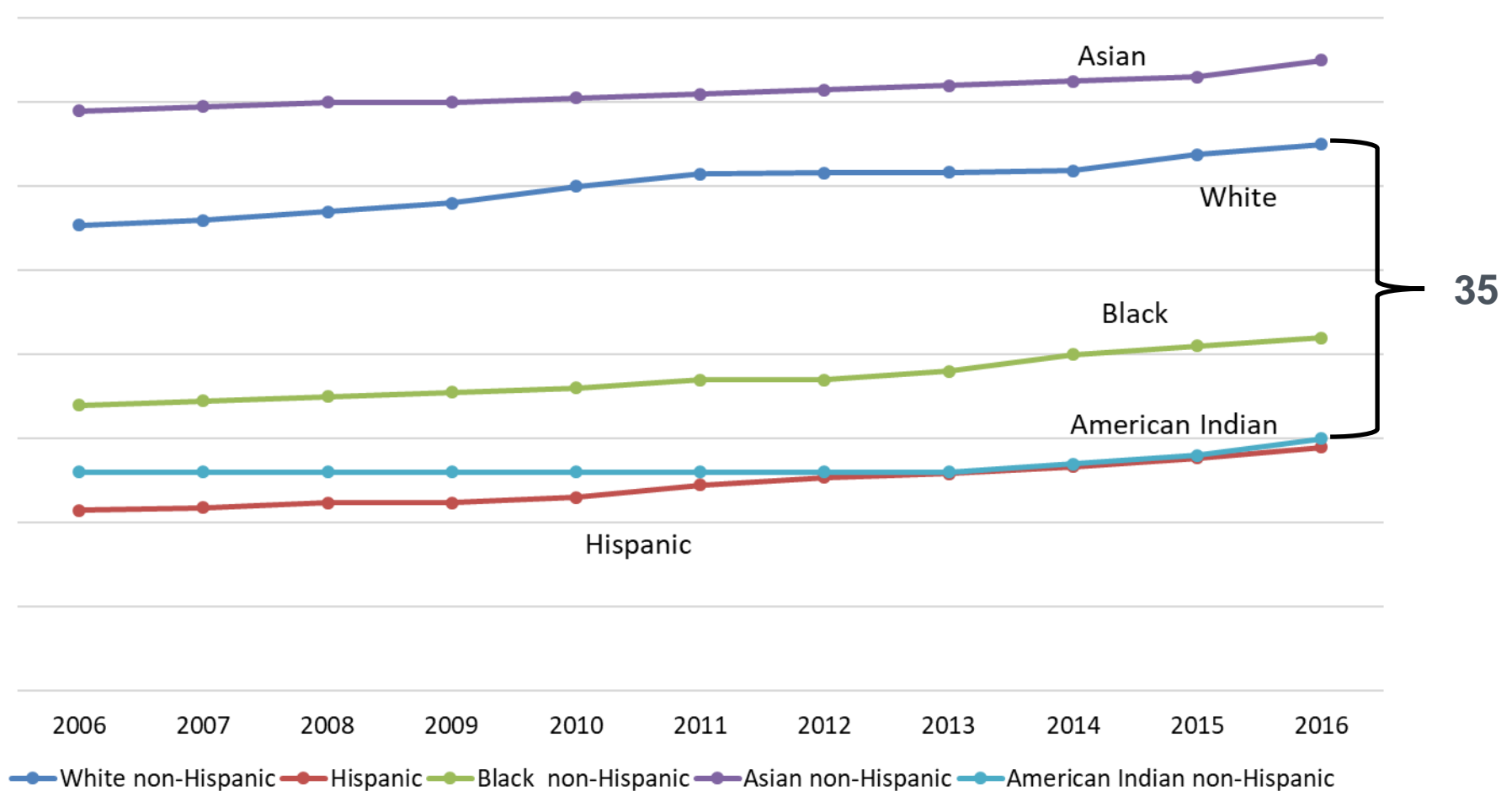


# Hispanic, Black, Asian, and other minority share

■ 2015 ■ 2050



## Share of Colorado Population Ages 25 to 34 with Associate's Degree or Above by Race and Ethnicity



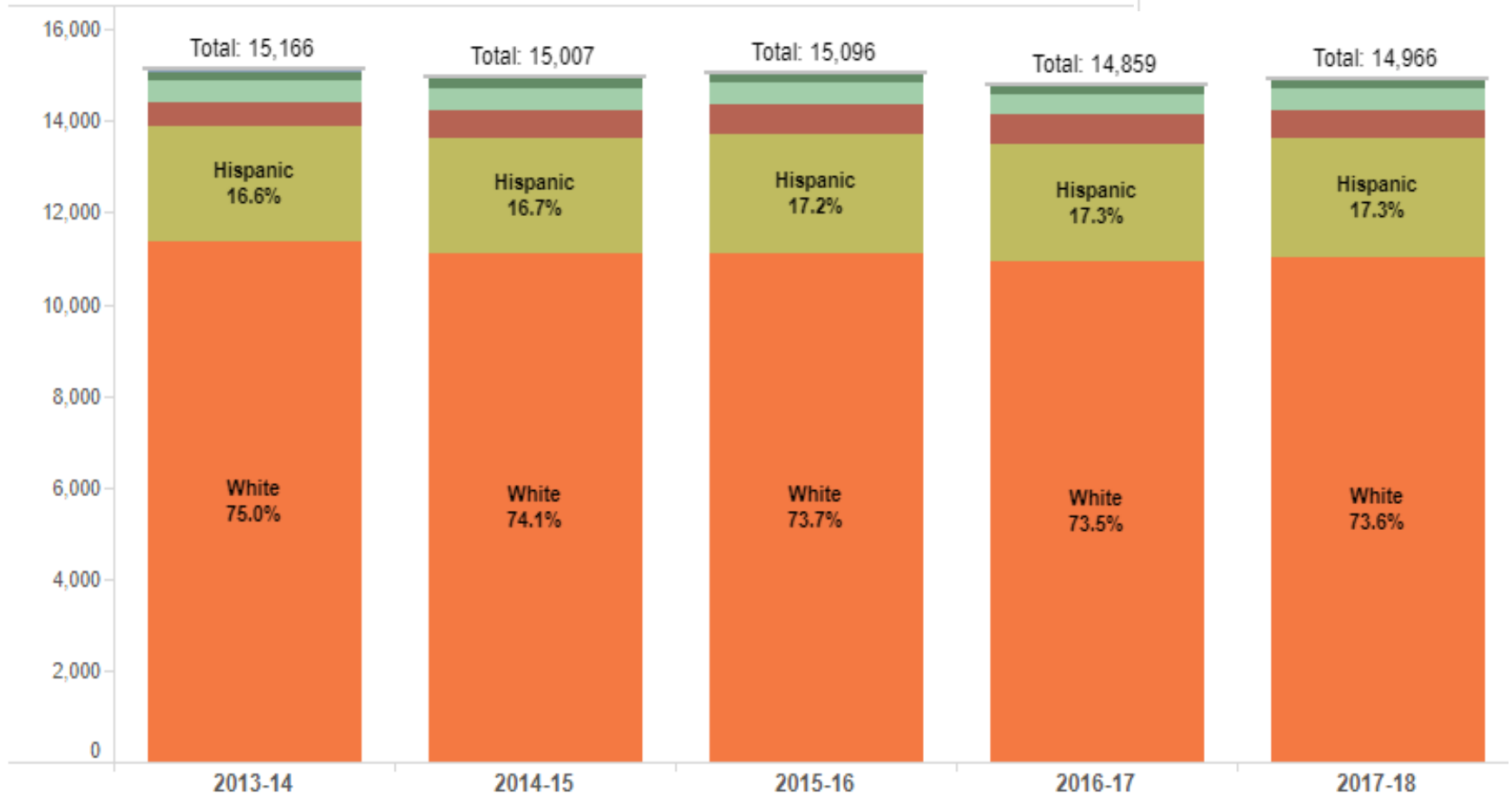


DISTRICT

LITTLETON 6 (0140)

- American Indian Or Alaska Native
- Asian
- Black
- Hispanic
- White
- Hawaiian/Pacific Islander
- Two Or More Races

Total Enrollment  
by Ethnicity



# *Housing and Costs*



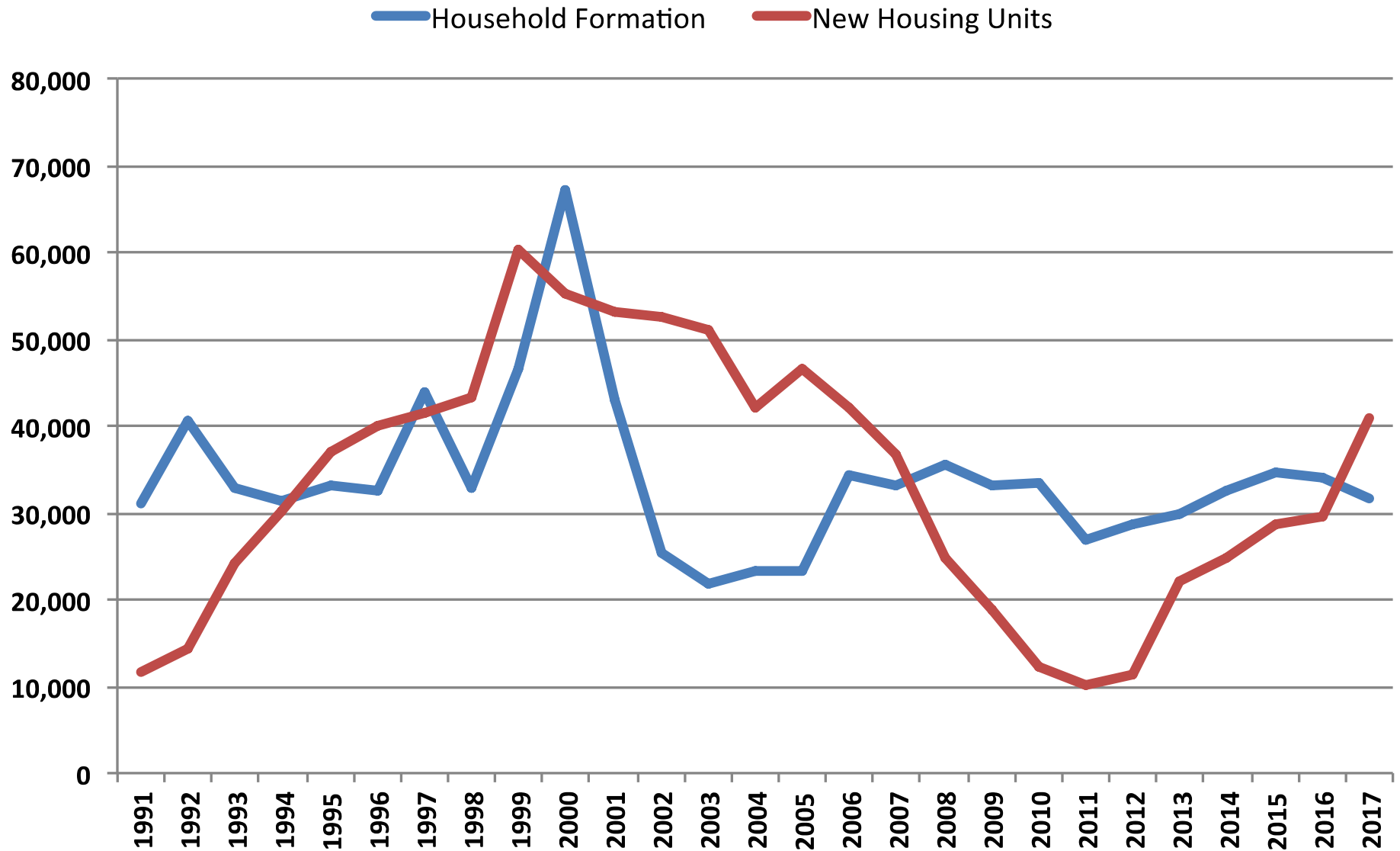
**COLORADO**  
Department of Local Affairs

# ACS 2017 Median Home Value



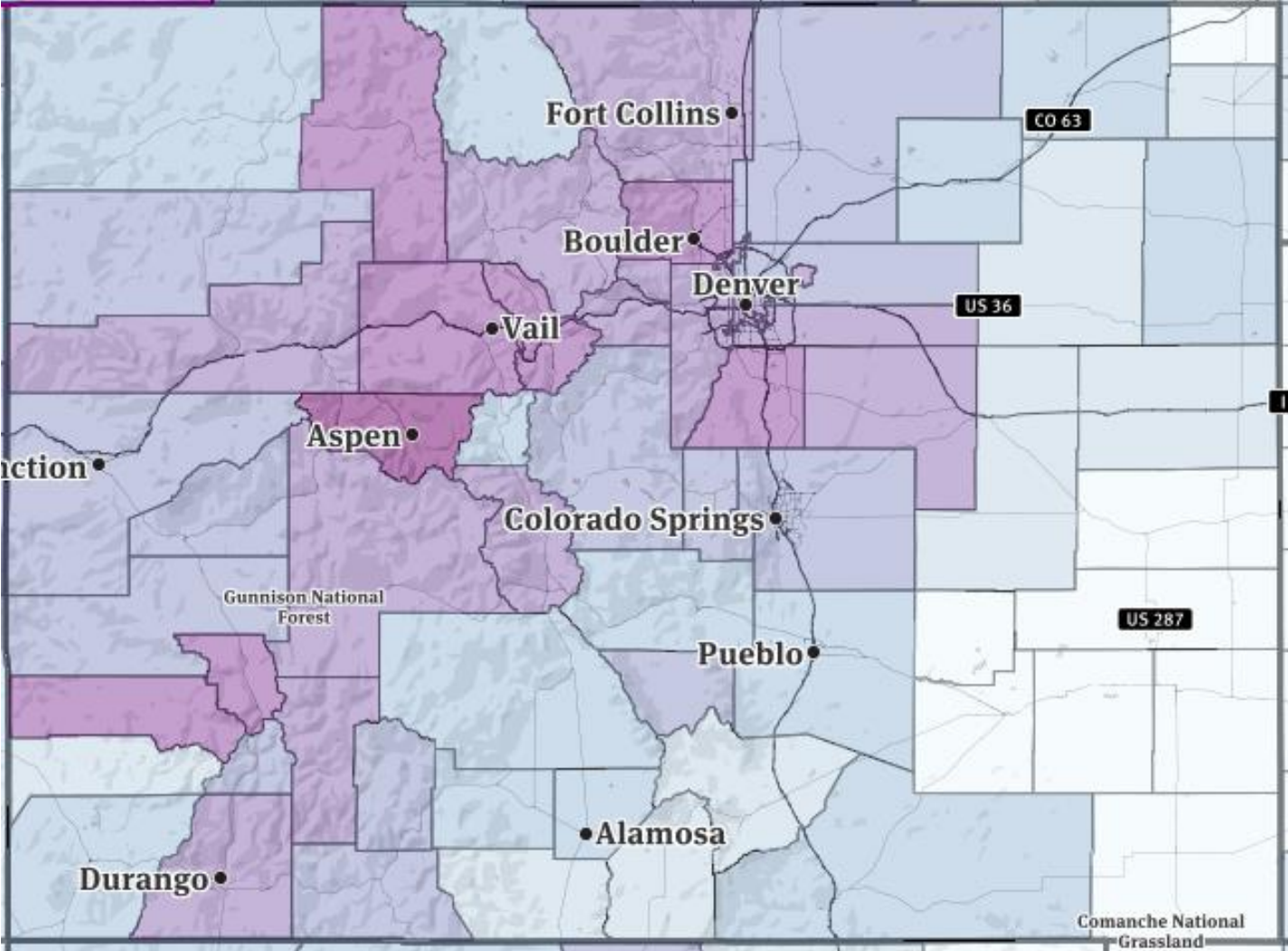
**COLORADO**  
Department of Local Affairs

# Colorado Household Formation vs. Housing Unit Growth



# Median Home Value, ACS 2013-17

Owner Occupied



**Littleton**  
**\$338,900**

**Arapahoe**  
**\$292,900**

**Colorado**  
**\$286,100**

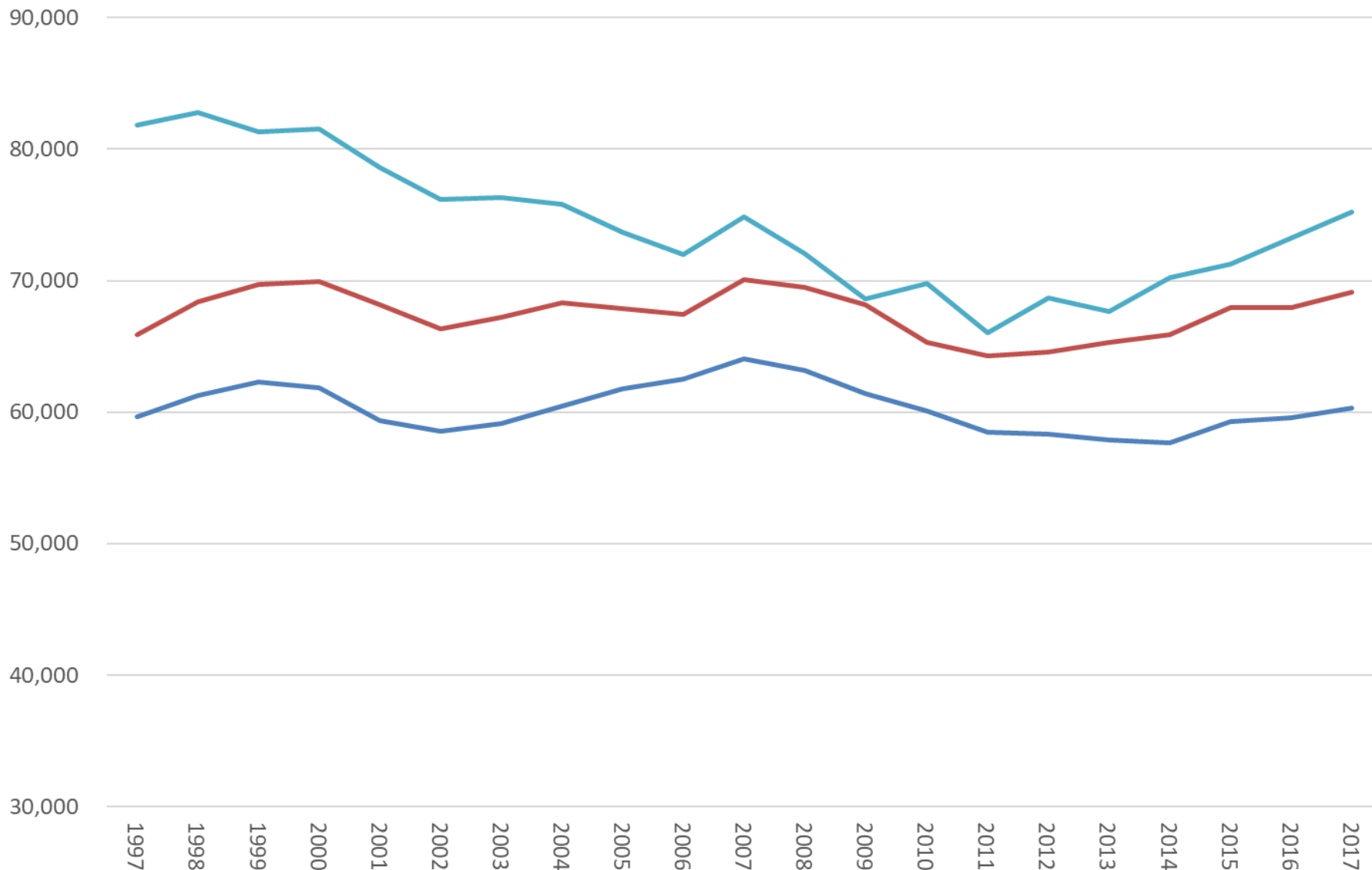
**Median Home Value**

- \$1 to \$97,699
- \$97,700 to \$139,599
- \$139,600 to \$199,199
- \$199,200 to \$284,399
- \$284,400 to \$396,499
- \$396,500 to \$570,699
- \$570,700 +



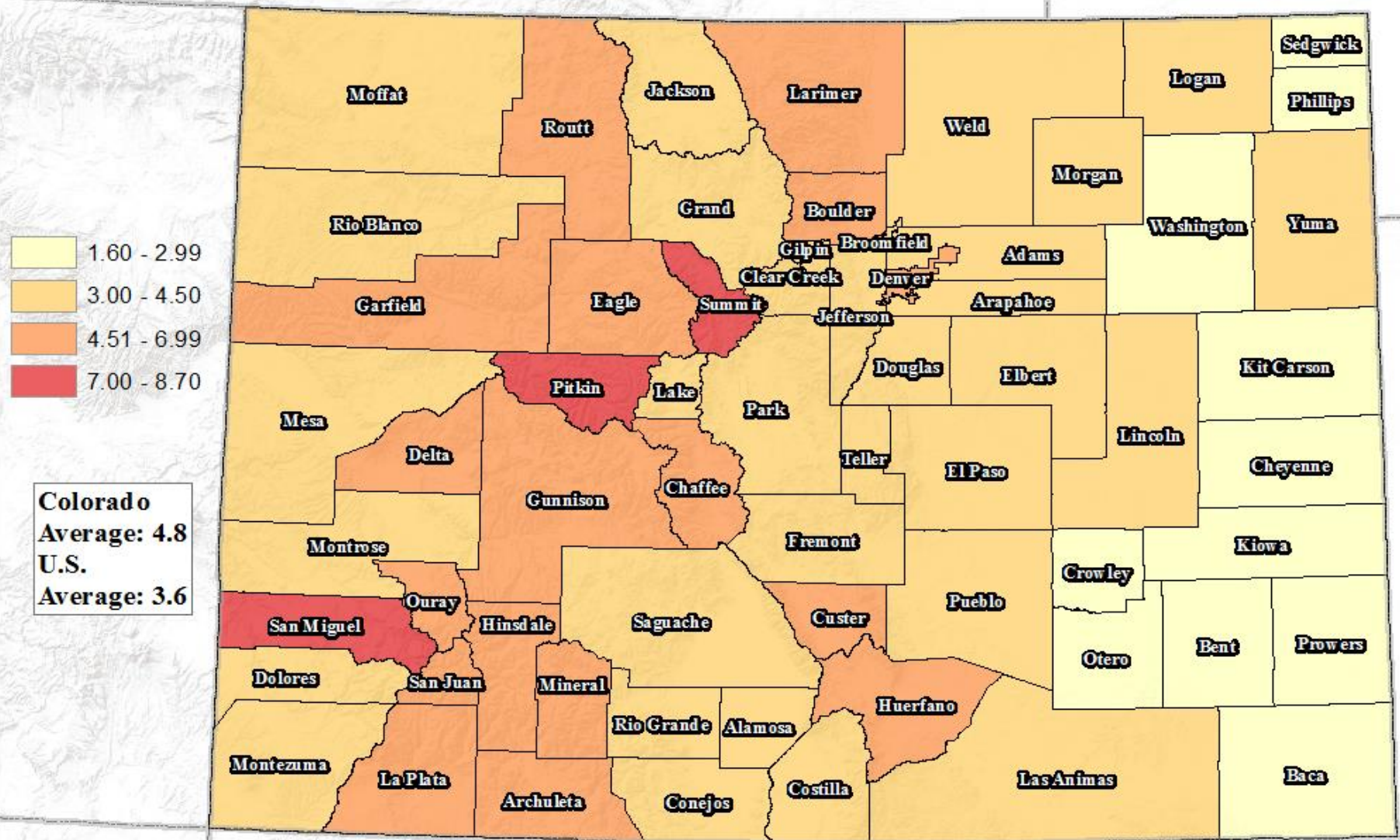
## Median Household Income in 2017 Dollars

United States Colorado Arapahoe County (CO)





# Years of Median Household Income needed to Buy a Median Value Owner-Occupied Home in 2016



# SUMMARY

- Disparate growth across the state.
- Slowing birth rates
- Age transitions - workforce and voting block
- Can we continue to attract and retain the best and brightest for the labor force?
- Increasing racial and ethnic diversity.
- Everything is connected - population to jobs to education to housing to daycare to infrastructure to population...
- **Importance to Good Data and Census 2020 Counts**





# *Thank you*

State Demography Office  
Department of Local Affairs

Chris Akers

[chris.akers@state.co.us](mailto:chris.akers@state.co.us)

303-864-7751

[Demography.dola.colorado.gov](http://Demography.dola.colorado.gov)



**COLORADO**  
Department of Local Affairs