



CKL
WORKWEAR DISTRIBUTION

Est.
1972

**WEARABLE
TECHNOLOGIES**
BRINGING INTELLIGENT CLOTHING TO LIFE



VISIJAX®

INDUSTRIAL

2016

HI-VISIBILITY IS NOT ENOUGH

In an emergency situation, a power blackout is very possible. In such 'zero-light' conditions, even conventional EN471 hi-visibility clothing will be completely invisible without a light source shining directly upon them.

Very foggy conditions present similar dangers. The fog disperses the light before it reaches the EN471 garment and any light that is reflected is again diffused before reaching the viewer's eyes.

This can make an already dangerous situation far more hazardous.

This visibility black spot has conventionally been quietly accepted as there has never been any solution, but this has now changed with the very latest wearable technology.

WELCOME TO TRUE HI-VISIBILITY

CKL's revolutionary LED wearable technology is visible even zero-light conditions. With 11 high intensity LED's integrated into an EN471 100% waterproof but machine-washable vest or jacket – this is TRUE high visibility. The supplied rechargeable battery is good for up to 20 hours use between charges.

ENHANCED VISIBILITY - DAY OR NIGHT

Our LED garments dramatically enhance visibility during the day – particularly in overcast or foggy conditions. The flashing LEDs also make it far easier to pick out an incident in a large space or a crowd situation. Consider an incident at a football stadium, concert, or street festival.

FLASH MODES

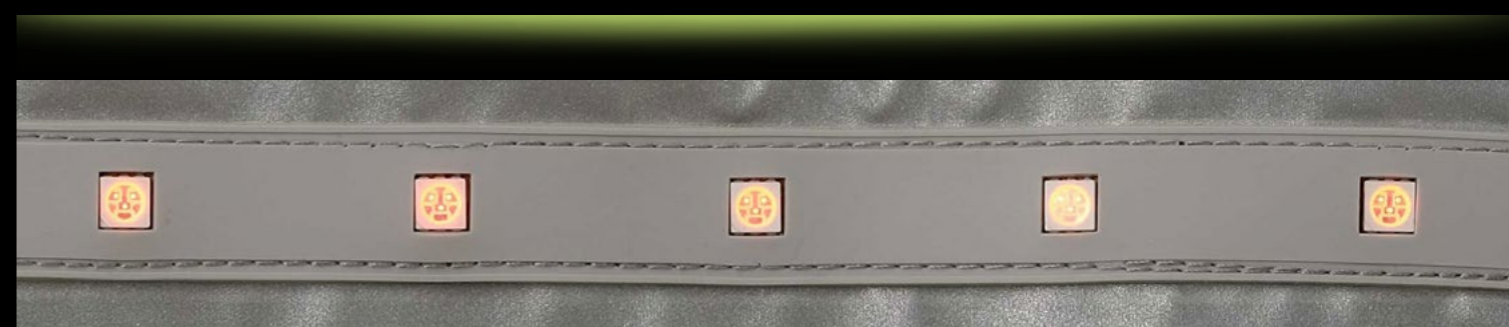
The LEDs have different flash modes – slow strobe, fast strobe, constant on or off. These can be used depending on the circumstances, environment or to preserve battery life. They can also be assigned a different meaning, so can be used to visually communicate a coded message, enabling emergency situations to be handled far more effectively.

PU-COATED. RAINPROOF. MACHINE WASHABLE LEDs

The electronics and LEDs are all waterproof and machine-washable on a delicates setting at low temperature with a non-abrasive detergent, although you must detach the battery first.

RECHARGEABLE USB BATTERY

All garments are supplied with a removeable **lithium-ion battery** offering up to **20 HOURS** between charges. The battery has an integrated button which when pressed, switches between the various flash modes, as well as a rapid-flash low-battery warning. Recharging is via a mini-USB cable (supplied), to any computer, charger, or USB-enabled plug (not supplied). A full charge is reached in approx. **4 HOURS**.



POSSIBLE USES

VISIJAX products can be used in any current task that requires high-visibility, but will further increase visibility and safety of workers in all possible light conditions - even in overcast days. However, there are some uses and scenarios where the LEDs can be even more useful.

- **Emergency Response** Personnel who may be dealing with unpredictable light conditions.
- **Serious Incident Response** – who may be dealing with a complete blackout in a building, street, or even a town or city block.
- **Engineering Teams** working in variable light conditions
- **Airports of Sea Ports** – particularly on dark or foggy conditions
- **Local Authorities Personnel** Particularly road, parks or rural workers or early morning shift workers, such as **postmen, refuse collectors** who work on dark mornings on dimly lit roads, especially in rural environments.
- **Underground Workers** such as miners, tunnel workers, subway train staff, sewer maintenance crews etc.
- **Bus , Coach, or other Drivers** particularly those on early shift
- **Crossing Guards** (lollypop-men)
- **Road or Roadside Workers** parking attendants, roadside assistance engineers or lorry drivers who may have to work on or near busy roads, which may be dimly lit, or suffer other risks such as fog or rain, particularly if other drivers may have forgotten to switch on their headlights.
- **Construction Workers** - enhanced site safety at least for key personell
- **Railway Workers**
- **Forestry Workers**
- **Police Force**
- **Security Personnel** – can easily communicate visually to each other with flashes LED's across a large site to mark their presence visually to colleagues.

Enhanced visibility in fog, even during daylight (simulated)



HI-TECH ICE TAGS

All VISIJAX Hi-Vis garments have ICEid tags attached - an **innovative** evolution of regular ICE tags, the employee stores personal & medical data online, while the small durable plastic ICE tag attaches conveniently, clearly yet unobtrusively to the jacket's front zip. It displays a **unique** QR-code that is easily scanned by emergency services first-responder personnel using an internet enabled smartphone, providing easy and rapid access to key potentially life-saving information if ever required.

These **low-cost** but **high-tech** ICE tags are also available for purchase separately for **only a few pounds**, enabling them to be attached to any existing bags, jackets or equipment. A functional but **highly cost effective** way to factor in **additional safety** for any workforce, particularly for lone workers.

ALL DATA HELD SECURELY ONLINE- FOR FREE

- medical conditions • medications • allergies • contact details • next of kin etc

Users simply register online to add or update their data, which is held securely forever on our servers free of charge without any annual subscriptions. There is no restriction on the type of data added, and all information is accessible by any web-equipped smartphone or computer.



CONTACT CKL TO FIND OUT MORE



Tel: +44 (0) 800 788 0777
E: sales@ckl.uk.com



STOCK ITEMS



ORDER NOW 0800 788 0777

LED Adjustable Safety Vest

- 11 integrated High Intensity LEDs
- Lightweight Polyester mesh
- EN ISO 20471 Class 2
- Reflective strips with Orange trim
- Inner/external pockets
- Zipper closure (easy on/off)
- Adjustable sides • ICEid tag

£29.99 +Vat

Discounts available for volume

LED Parka

- 11 integrated High Intensity LEDs
- EN ISO 20471 Class 2 conformity
- Concealed hood • ICEid tag
- Rainproof PU-coated

£58.33 +Vat

Discounts available for volume

LED Extd. Length Parka

- 11 integrated High Intensity LEDs
- EN ISO 20471 Class 2
- Reflective strips with Orange trim
- Removable hood & Rainproof PU-coated
- Zipped side vents & ID Pocket on chest

£58.33 +Vat

Discounts available for volume

Yellow LED Safety Vest

- 11 integrated High Intensity LEDs
- Lightweight Polyester mesh
- EN ISO 20471 Class 2 • ICEid tag
- Full length front zip
- Chest & patch pockets
- Pen pocket & key holder

£29.99 +Vat

Discounts available for volume

EMERGENCY SERVICES / BESPOKE DESIGN

For pricing, bulk orders or simply any further information on our Emergency Services range, or for bespoke manufacture according to your own specifications or to requirements, please call CKL on +44 (0)800 788 0777 or email us at sales@ckl.uk.com



Orange LED Boiler Suit

- Embedded LED's in the front shoulders & lower back
- Concealed front zip closure
- 2x Chest pockets with safety flap
- Double high visibility tape on arms, waist and legs
- External knee pad pockets
- Elasticated back for better fit and movement
- **2x cargo pockets**

£ POA

LED Police Vest

- Embedded LED technology
- Reflective strips
- Multiple pockets / compartments
- Hi-Vis Yellow
- Walkie talkie Holders

£ POA

Orange LED Safety Vest

- 11 integrated High Intensity LEDs
- Lightweight Polyester mesh
- EN ISO 20471 Class 2
- Full length front zip
- Chest & patch pockets
- Pen pocket & key holder • ICEid tag

£ POA

Green LED Boiler Suit

- Embedded LED's in the front shoulders & lower back
- Concealed front zip closure
- 2x Chest pockets with safety flap
- Double high visibility tape on arms, waist and legs
- External knee pad pockets
- Elasticated back for better fit and movement
- **2x cargo pockets**

£ POA

DATASHEET

LED PARKA

JACKETS



Hi-Vis LED PARKAS SPECIFICATIONS		
Features	LED Parka	Extended Length
Washable/rainproof PU Polyester	✓	✓
Taped seams	✓	✓
Reflective safety strips	✓	✓
EN ISO 20471 Class 3 conformity	✓	✓
6 integrated high intensity white LEDs front	✓	✓
5 integrated high intensity red LEDs back	✓	✓
3 flash modes: constant, rapid, slow	✓	✓
Detachable, rechargeable USB battery	✓	✓
Low battery warning system	✓	✓
20+ hours between recharging	✓	✓
Stud-fastened storm flap	✓	✓
Front pockets with flaps	✓	✓
ICEid tag	✓	✓
12 months warranty	✓	✓
Inner patch pocket	✓	✓
Quilted nylon lining	✓	✓
Zippered internal pocket	✓	✓
Zip front fastening	✓	✓
Concealed drawcord hood (Velcro®)	✓	✓
Sleeved knitted storm cuffs	✓	✓
Hi-vis yellow	✓	✓
Hi-vis yellow/orange	✓	✓
Velcro® cuff fastening	✓	✓
Detachable hood	✓	✓
ID chest pocket	✓	✓
Zippered underarm vents	✓	✓



Store use only. Not for resale.
Correct at time of print. Specifications may vary slightly. E&OE. T&Cs apply.
Please contact us for trade prices



Tel: +44 (0)800 788 0777
Fax +44(0)141 420 1637
sales@ckl.uk.com
www.ckl.uk.com

Visijax Work Wear Jacket cm / (in) LED3000						
Size	Center back length	1/2 Chest	1/2 Bottom	Sleeve length	1/2 Sleeve opening	
S	81 / (32)	61 / (24)	61 / (24)	80.5 / (32)	17.5 / (9)	
M	83.5 / (33)	64.75 / (25.5)	64.75 / (25.5)	82 / (32)	18 / (7)	
L	83.5 / (33)	68.5 / (27)	68.5 / (27)	83.5 / (33)	18.5 / (7)	
XL	86 / (34)	72.25 / (28.5)	72.25 / (28.5)	85 / (33.5)	19 / (7.5)	

Visijax Work Wear Extended Length Jacket cm / (in) LED3001						
Size	Center back length	1/2 Chest	Shoulder width	Sleeve length	1/2 Sleeve opening	
S	84 / (33)	65 / (25.5)	52.5 / (21)	66 / (26)	17.5 / (7)	
M	85 / (33.5)	68 / (27)	54 / (21)	67 / (26)	18 / (7)	
L	86 / (34)	71 / (28)	55.5 / (22)	68 / (27)	18.5 / (7)	
XL	87 / (34)	74 / (29)	57 / (22.5)	69 / (27)	19 / (7.5)	

Workwear LED Parka Data Sheet GBP Issue V1

FREQUENTLY ASKED QUESTIONS

Why embed LEDs in a parka?



Improved visibility enhances safety. Heavy-duty, hi-vis jackets and vests are standard-issue. Add embedded LED capability, and everyone will benefit significantly: improved workforce morale and

reduced risk of injury (with consequent loss of productivity or worse, adverse profile). Keeps personnel safer and happier, while the washable features extend garment life-cycles to keep departments on budget.

How do the lights work?



At the start of a shift, press the red button on the battery to switch the jacket on to a 'slow' flash mode. There are two further modes - quick flash and constant - just press again to cycle through the options. Press the red button again to switch off.



How is the jacket powered?

By a rechargeable lithium-ion battery offering 20+ hours* between charges. The jacket incorporates a low-battery warning mode: a very rapid flash indicate it needs recharging, via a USB cable (supplied). Full charge is reached in approximately 4 hours via your laptop or a USB-enabled plug!

* In normal use

Is the parka really washable?

Yes, in a 'delicates' machine wash. Please refer to the care label on the garment. Simply detach the battery prior to washing. The warranty is invalidated if the battery is washed! The performance fabric enables you to enjoy comfort and safety at work.



Award-winner!

The Consumer Electronics Show in the USA is the world's leading technology event. Visijax is an Innovation Award honoree in the wearable tech section - the equivalent of a tech 'Oscar'.



As featured...

Visijax has received high acclaim from mainstream media and other sources, including:

Amazon
BBC News Online / BBC Click Online
CBS
Daily Mail
Digital Trends
Discovery Channel
Engadget
Evening Standard
Fox TV
Geekbeat.tv
The Guardian
Into Tomorrow Radio Network
Long Island News 12 Channel
NBC
Sunday Times
Universal



Good to know

Garment Data

Packaging: The battery and USB cable are supplied in a protective bag located in a parka pocket.

Parka/Extended Length - 11 LEDs
Outer: 100% PU-coated Polyester
Lining: 100% Nylon

Conforms to: EN ISO 20471 Class 3

Manufactured in China

Warranty

CKL offers a 12-month warranty on Visijax parkas (T&Cs apply). In the unfortunate event of a faulty garment, customers should return their item to a store with the original receipt and packaging for exchange or refund according to policy/statutory consumer rights.

Product Returns

Please refer to your line manager for procedures. Contact us by email: sales@ckl.uk.com



ICEid Tag

A free "In Case Of Emergency" tag is fastened to the parka (with a second one included for a helmet). Follow the instructions contained in the jacket packaging. Simply register personal details, a chosen contact (e.g. next of kin) and medical information (e.g. allergies, blood group, prescription medication, etc).

In an emergency, first responders can quickly access these details by reading the QR code on the tag. Mobile phone reception will be required to use the service. Details are held securely in accordance with the Data Protection Act and the company operates a privacy policy.

Workwear LED Parka Data Sheet GBP Issue V1

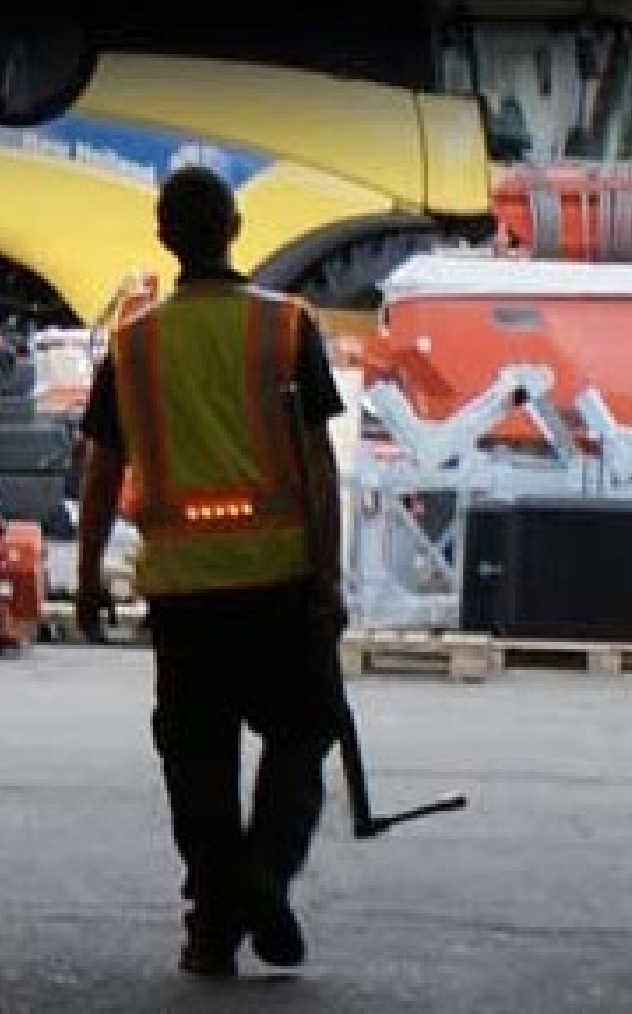
LED PARKA



LED EXTENDED LENGTH PARKA



DATASHEET LED VESTS



Hi-Vis LED SAFETY VESTS SPECIFICATIONS		
Features	LED Safety Vest	Adjustable Vest
Lightweight 100% Polyester mesh	✓	✓
Taped seams	✓	✓
Reflective safety strips	✓	✓
EN ISO 20471 Class 2 conformity	✓	✓
6 integrated high intensity white LEDs front	✓	✓
5 integrated high intensity red LEDs back	✓	✓
3 flash modes: constant, rapid, slow	✓	✓
Detachable, rechargeable USB battery	✓	✓
Low battery warning system	✓	✓
20+ hours between recharging	✓	✓
ICEid tag	✓	✓
12 months warranty	✓	✓
LH Chest pocket	✓	✓
Zip front fastening	✓	✓
Pen pockets/key-holder	✓	✓
2 x external patch Velcro® pockets	✓	✓
Hi-vis yellow	✓	✓
Hi-vis yellow/orange	✓	✓
RH ID pocket	✓	✓
Adjustable sides	✓	✓
Internal waist pocket	✓	✓

Visijax Work Wear VEST UK cm / (in) LED801				
Size	1/2 Chest	Shoulder width	Center back length	Armhole CURVED
S	51 / (20)	45 / (18)	71 / (28)	35 / (14)
M	55 / (22)	47 / (18.5)	73 / (29)	35 / (14)
L	59 / (23)	49 / (19)	73 / (29)	35 / (14)
XL	63 / (25)	51 / (20)	75 / (30)	35 / (14)

Visijax Work Wear Adjustable Waist VEST cm / (in) LED701			
Size	Shoulder width	Center back length	1/2 bottom the widest
S	44 / (17)	69 / (27)	60 / (24)
M	46 / (18)	70 / (27.5)	63 / (25)
L	48 / (19)	71 / (28)	66 / (26)
XL	50 / (20)	72 / (28)	69 / (27)

Store use only. Not for resale.
Correct at time of print. Specifications may vary slightly. E&OE. T&Cs apply.
Please contact us for trade prices



53 Wallace Street, Glasgow, G5 8DJ

Tel: +44 (0)800 788 0777

Fax +44(0)141 420 1637

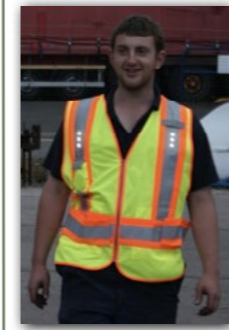
sales@ckl.uk.com

www.ckl.uk.com

Workwear LED Safety Vests Data Sheet GBP Issue V1

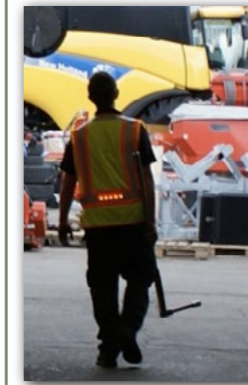
FREQUENTLY ASKED QUESTIONS

Why embed LEDs in a vest?



Improved visibility enhances safety. Hi-vis safety vests are standard-issue. Add embedded LED capability, and everyone will benefit significantly: improved workforce morale and reduced risk of injury (with consequent loss of productivity or worse, adverse profile). Keeps personnel safer and happier, while the washable features extend garment life-cycles to keep departments on budget.

How do the lights work?



At the start of a shift, press the red button on the battery to switch the vest on to a 'slow' flash mode. There are two further modes – quick flash and constant – just press again to cycle through the options. Press the red button again to switch off.



How is the vest powered?

By a rechargeable lithium-ion battery offering 20+ hours* between charges. The vest incorporates a low-battery warning mode: a very rapid flash indicate it needs recharging, via a USB cable (supplied). Full charge is reached in approximately 4 hours via your laptop or a USB-enabled plug!

* In normal use

Is the vest really washable?

Yes, in a 'delicates' machine wash. Please refer to the care label on the garment. Simply detach the battery prior to washing. The warranty is invalidated if the battery is washed! The performance fabric enables you to enjoy comfort and safety at work.



Award-winner!

The Consumer Electronics Show in the USA is the world's leading technology event. Visijax is an Innovation Award honoree in the wearable tech section – the equivalent of a tech 'Oscar'.



As featured...

Visijax has received high acclaim from mainstream media and other sources, including:

- Amazon
- BBC News Online / BBC Click Online
- CBS
- Daily Mail
- Digital Trends
- Discovery Channel
- Engadget
- Evening Standard
- Fox TV
- Geekbeat.tv
- The Guardian
- Into Tomorrow Radio Network
- Long Island News 12 Channel
- NBC
- Sunday Times
- Universal



Good to know

Garment Data

Packaging: The battery and USB cable are supplied in a protective bag located in a vest pocket.

Vest/Adjustable Vest – 11 LEDs
Outer: 100% PU-coated Polyester
Lining: 100% Nylon

Conforms to: EN ISO 20471 Class 2

Manufactured in China

Warranty

CKL offers a 12-month warranty on VISIJAX jackets, (T&Cs apply). In the unfortunate event of a faulty garment, customers should return their item with the original receipt and packaging for exchange or refund according to policy/statutory consumer rights.

Product Returns

Please refer to your line manager for procedures. Contact us by email: sales@ckl.uk.com



ICEid Tag

A free "In Case Of Emergency" tag is fastened to the vest (with a second one included for a helmet). Follow the instructions contained in the jacket packaging. Simply register personal details, a chosen contact (e.g. next of kin) and medical information (e.g. allergies, blood group, prescription medication, etc).

In an emergency, first responders can quickly access these details by reading the QR code on the tag. Mobile phone reception will be required to use the service. Details are held securely in accordance with the Data Protection Act and the company operates a privacy policy.

Workwear LED Safety Vests Data Sheet GBP Issue V1

For more information please call 0800 788 0777, email us on sales@ckl.uk.com, or visit ckl.uk.com

LED VEST



LED ADJUSTABLE VEST

