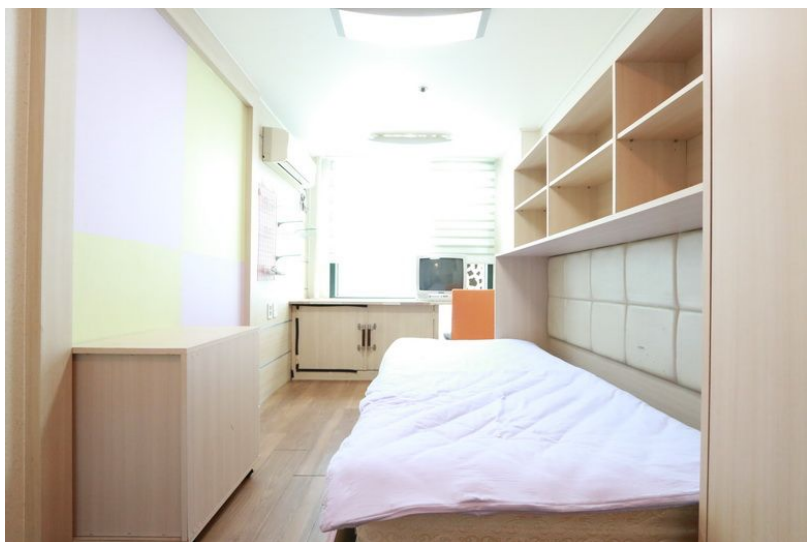


4 Reasons to Stay at an Orlando Outlet Hotel



In South Korea, a officetel (Korean: , a portmanteau of "resort" and "building") is basically a multi-use structure with living quarters and office units. These can be seen in some neighborhoods or building complexes. Officetels are typically rented out to students, artists, authors, writers and foreigners. A good number of them can also be privately owned.

You need to make your reservation at a hotel in the area close to the Korean officetel. Be sure that you'll have the ability to check in on time. Most private parking lots have huge security presence, so it is very likely that you will be checked in promptly, however if it's not there, don't worry. You may pay for additional security services. An additional advantage of a private parking lot is they normally have a huge supermarket round the corner and some fine restaurants also.

Most private officetel apartments have private parking. It is definitely worthwhile to pay a little extra to have your own place to park after parking your car in the parking lot. The apartment buildings themselves should have an extremely clean and well maintained exterior. These buildings should have a gated entry and be surrounded by trees, foliage and landscaping. The complex should also have a gated garage for your car storage.

Some hotels are only 1 story, while others are just two or three stories. If you only require a hotel room for the night, a resort on the second floor of this complex may be your best option. They are still near the elevator, you won't have to hike across the complex's grounds and you will be close to your window. They also have the convenience of the reception telephone and reception showers, which might be an option you want.

Locating an OE in an officially licensed establishment can be a challenge. There are some OE which are only owned by one person or by a limited group of people. Before you book a hotel room with an OE, you will need to be certain that it's owned by someone. In case the hotel is owned by more than 1 person, you may find that some of the rooms aren't precisely the same. If this is the case, it is probably best to select somewhere else.

Lodging in an OE makes it convenient to get to the gym or practice. You don't need to worry about parking permits or finding a place to park once you arrive at the hotel. There's generally a parking permit desk right outside your front door. Many's offer valet parking.

In addition to having a convenient location for the gym or practice, you may also want to search for parking permits at OE's close proximity to hotels. By way of example, if you're staying in New York City you might not have the ability to drive five miles to the nearest hotel by yourself. That is why many people choose to stay at an OE, which means they'll simply need to use their personal vehicle to drive to the nearest hotel. As you can see, parking permits can be difficult to find at a resort. Having an OE, parking permits are just a mouse click away.

One of the terrific things about staying at an OE is that they usually provide a complimentary breakfast each morning. This can be a wonderful way to make the most of your stay in the resort. It is possible to wake up knowing you won't miss any of your courses. Additionally, many hotels charge extra for breakfast, so by staying at an OE you might be saving yourself some money. In general, an OE can supply you with everything that you are looking for in a hotel.