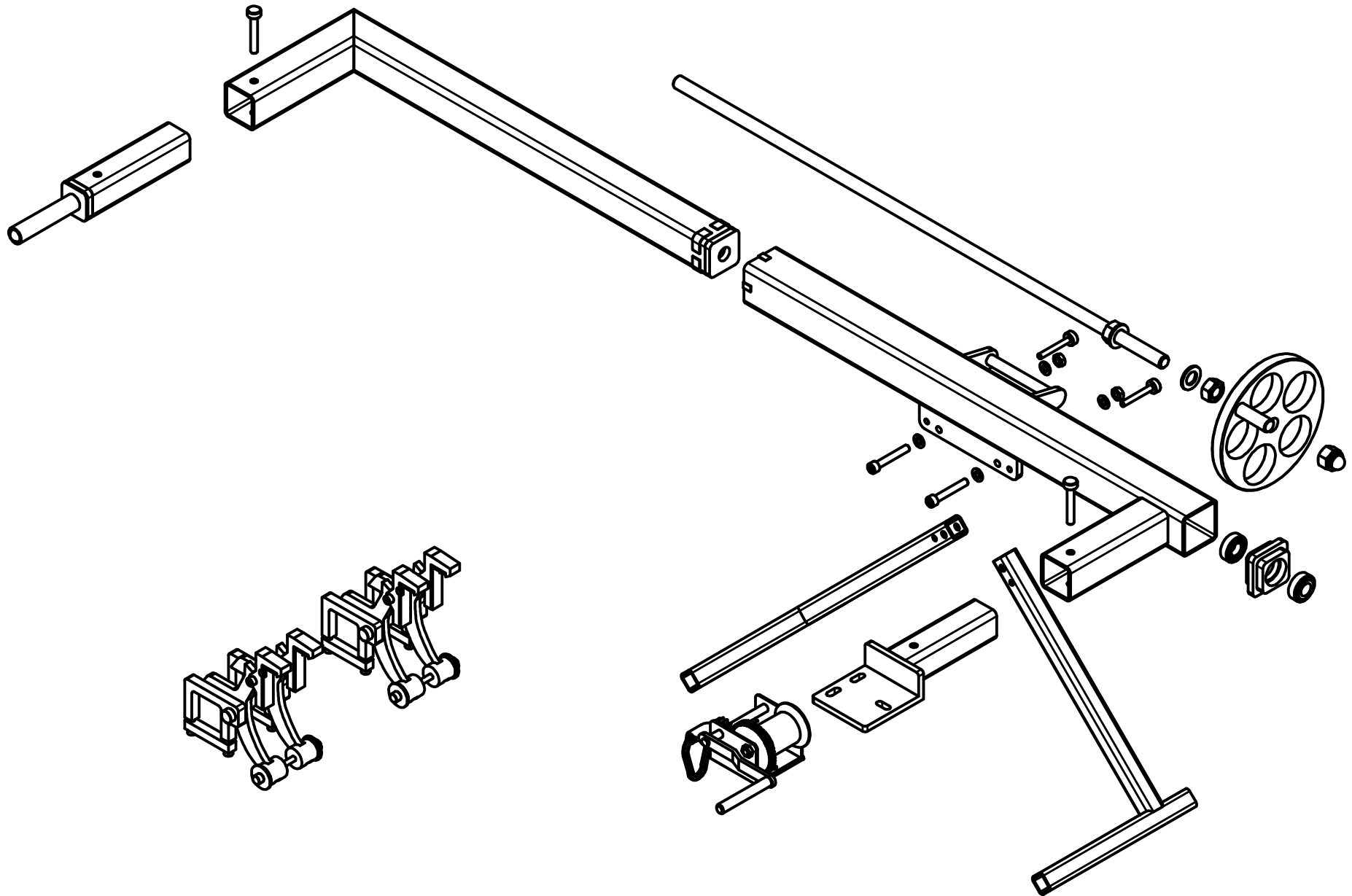
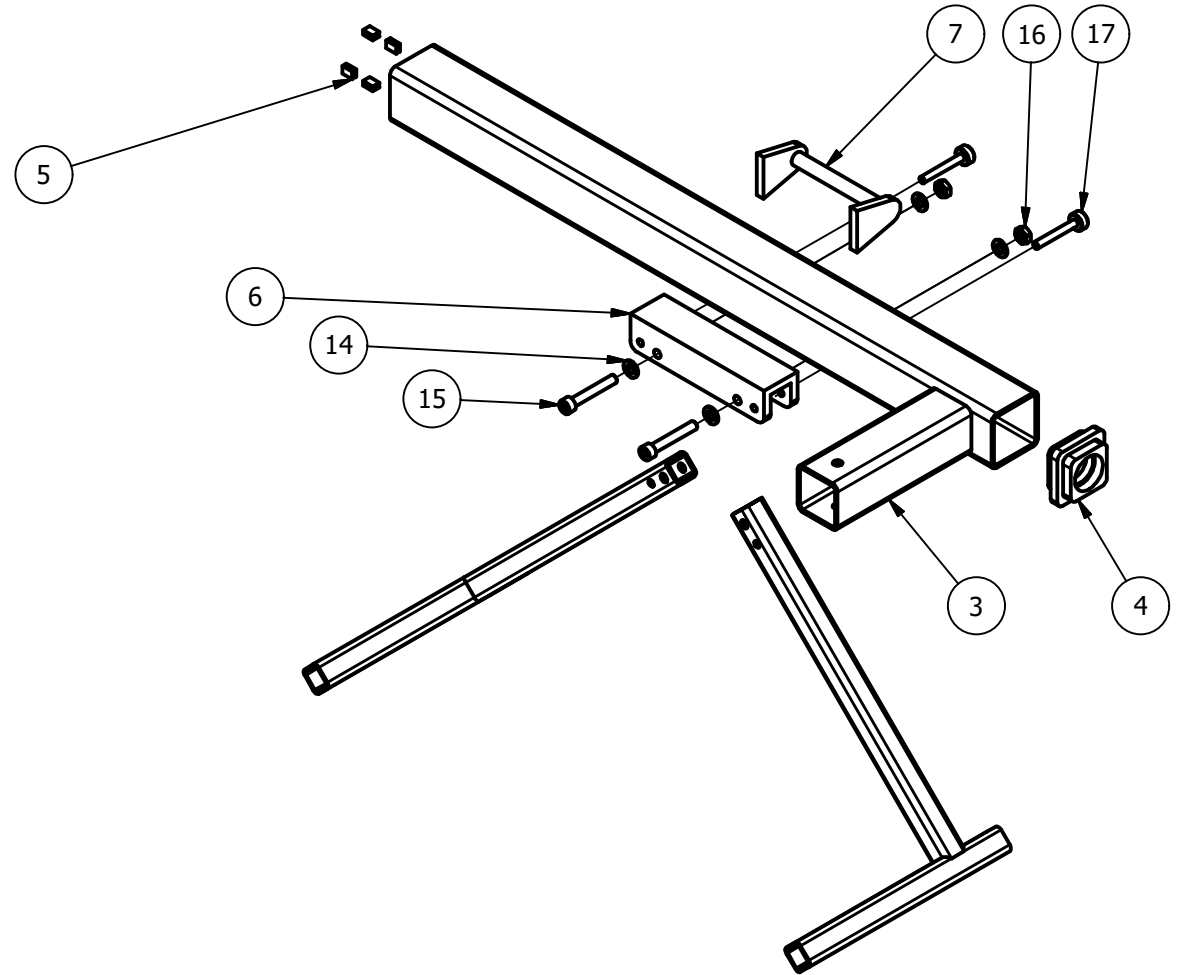
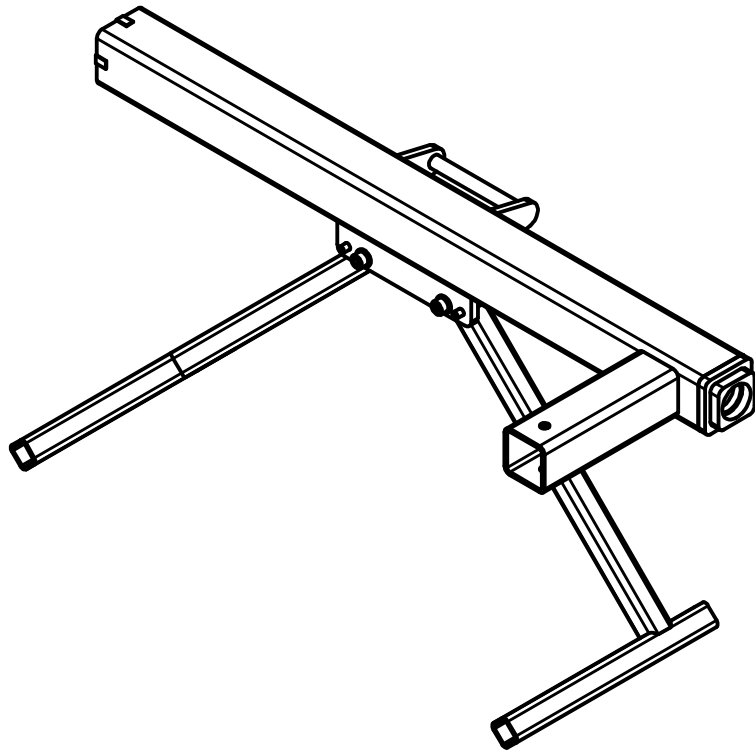


Designed by dotharth	ArcheryTalk	Date 08-01-17
Bow press		Mass 53.5 kg
Bow press		Material Steel
		Scale Sheet 1 / 20

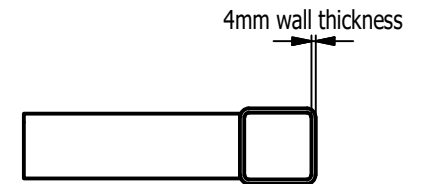
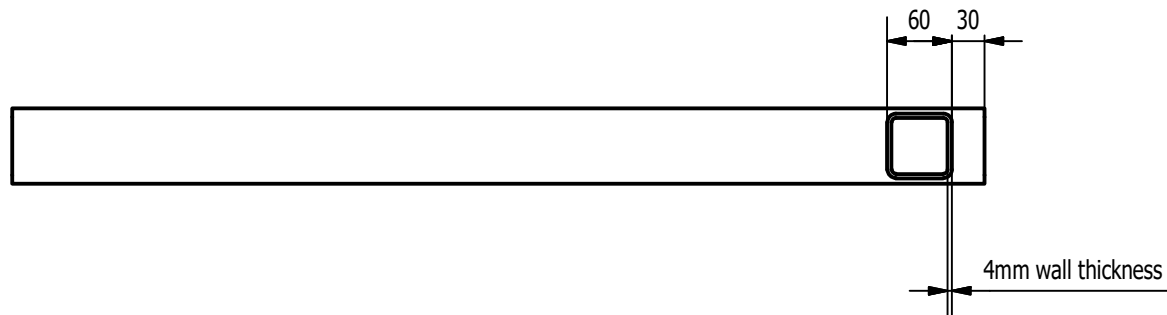
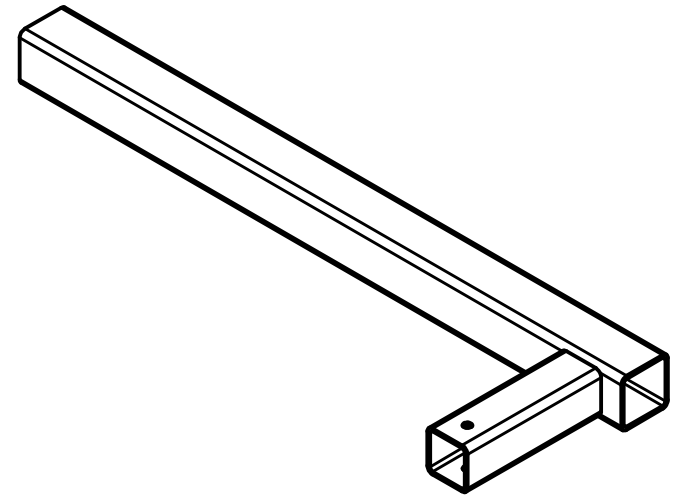
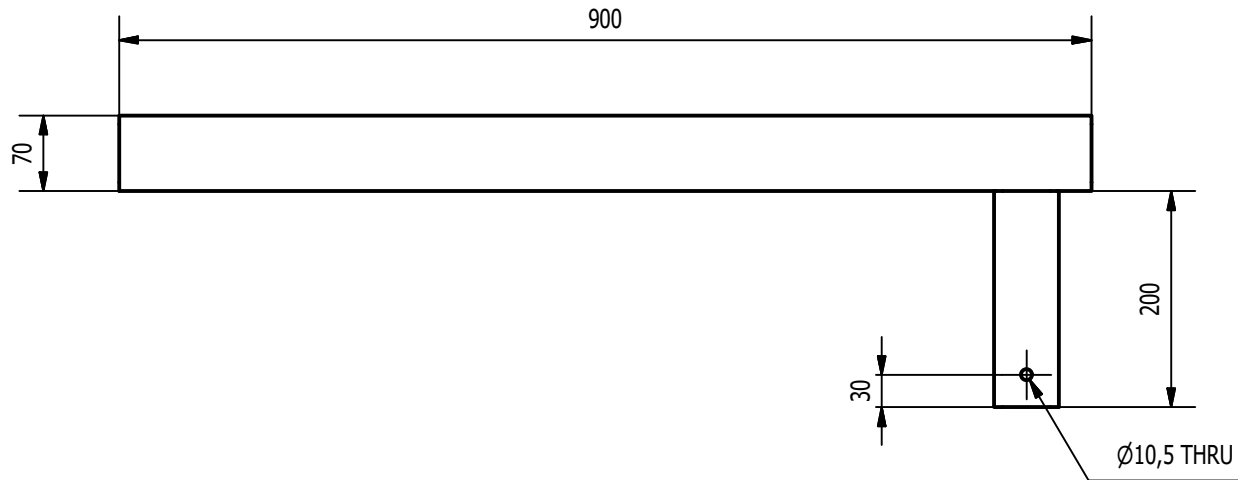


Designed by dotharth	ArcheryTalk		Date 08-01-17
Bow press		Mass 53.5 kg	Material Steel
Exploded view		Scale 1 : 8	Sheet 2 / 20

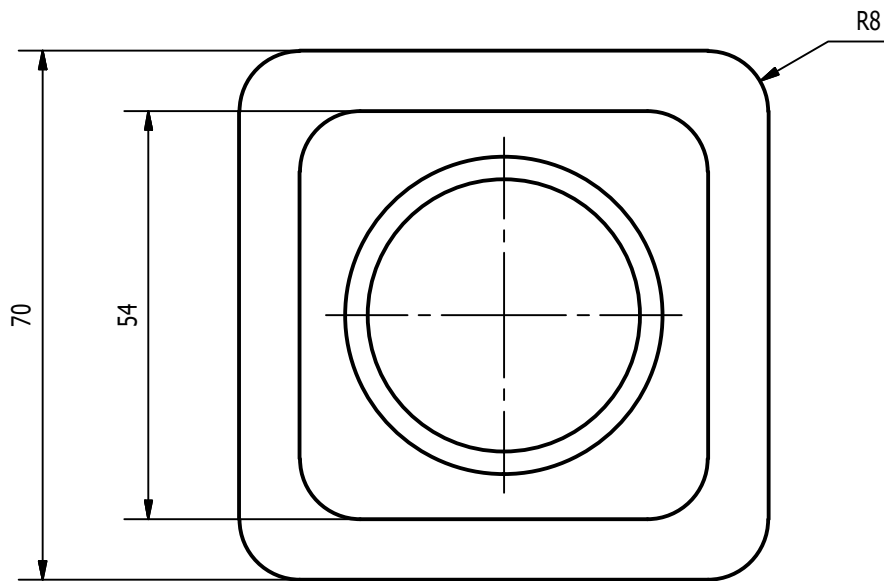
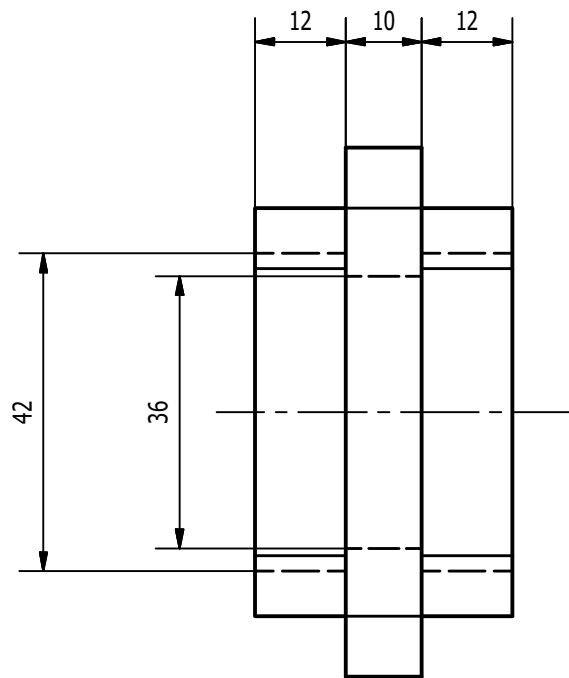


ITEM	QTY	PART NUMBER	DESCRIPTION
1	1	Base	
4	1	Bearing adapter	
5	4	spacer 09mm	thickness : 0.9mm
6	1	Feet support	
7	1	Handle	
8	1	Right foot	
11	1	Left foot	
14	4	DIN 125 - A 10,5	Washer
15	2	DIN 912 - M10 x 65	Cylinder Head Cap Screw
16	2	DIN 934 - M10	Hex Nut
17	2	Pin M8	

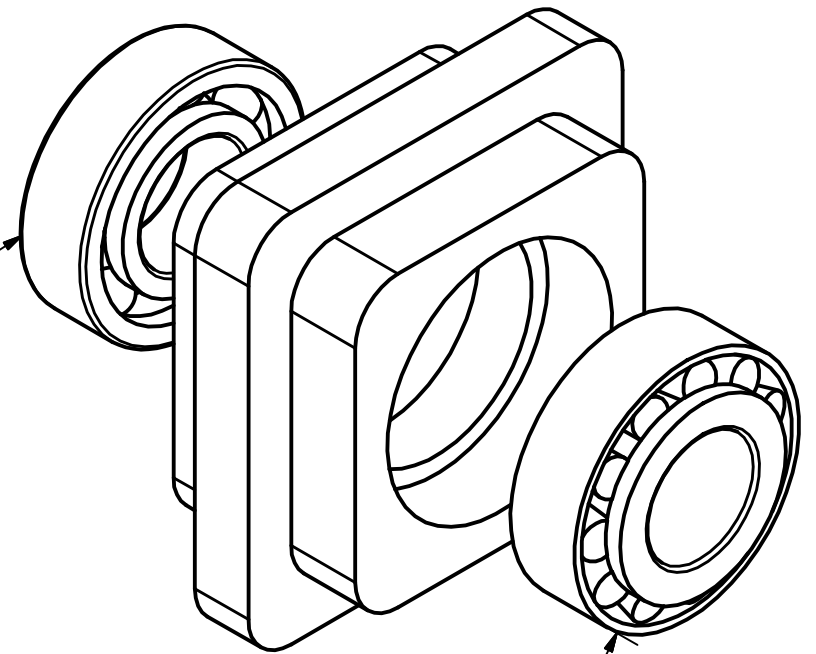
Designed by dotharth	ArcheryTalk		Date 08-01-17
Bow press		Mass	Material Steel
Base assembly		Scale 1:8	Sheet 3 / 20



Designed by dotharth	ArcheryTalk	Date 08-01-17
Bow press		Mass 15,2 kg
Base assembly		Material Sheet 1:7 4 / 20

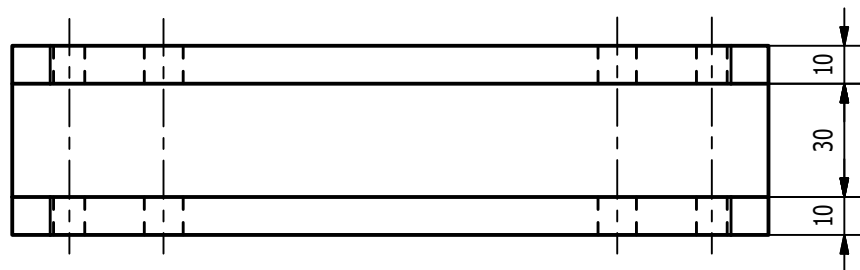
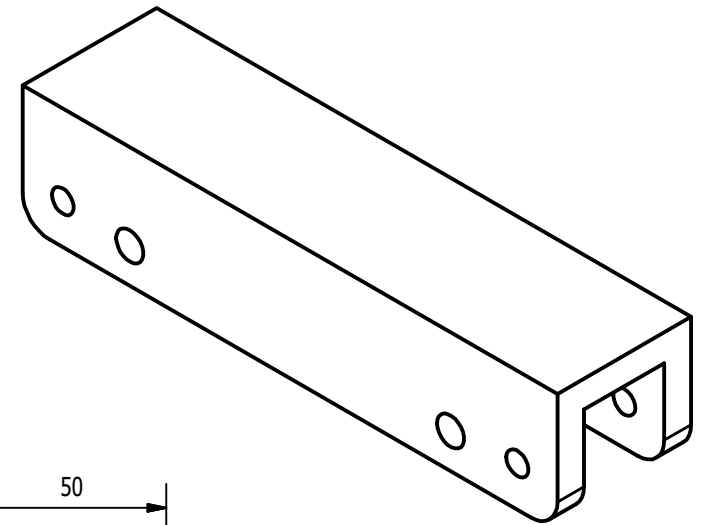
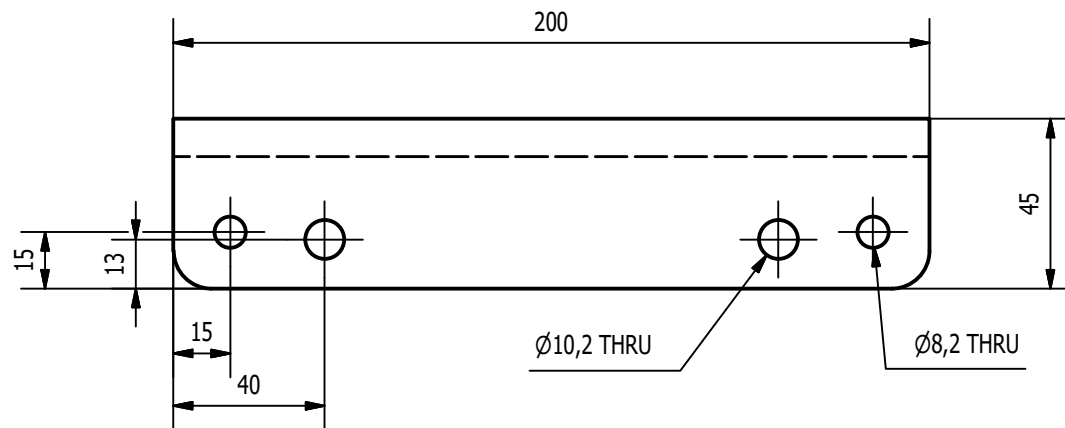


SKF 6004 ball bearing

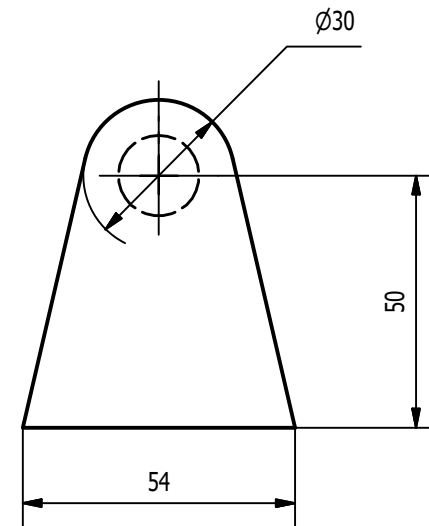
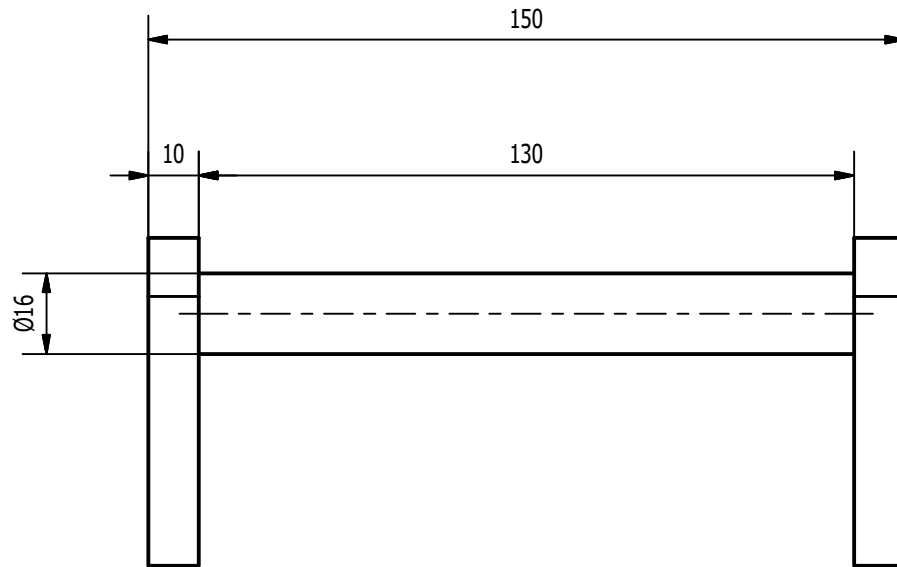
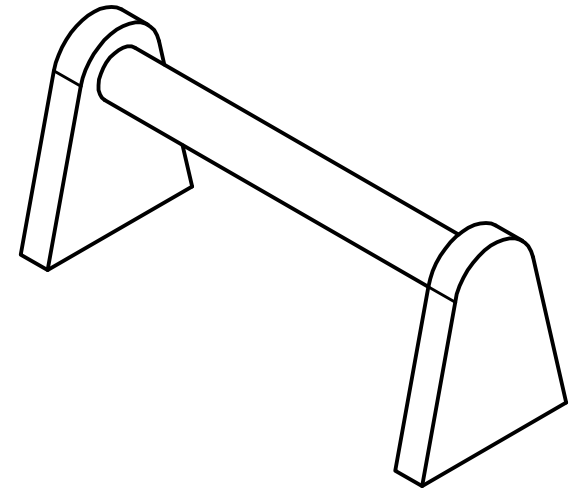


SKF 32004 X/Q

Designed by dotharth	ArcheryTalk	Date 08-01-17
Bow press		Mass 0.7 kg
Bearing assembly		Material
		Scale 1:1
		Sheet 5 / 20

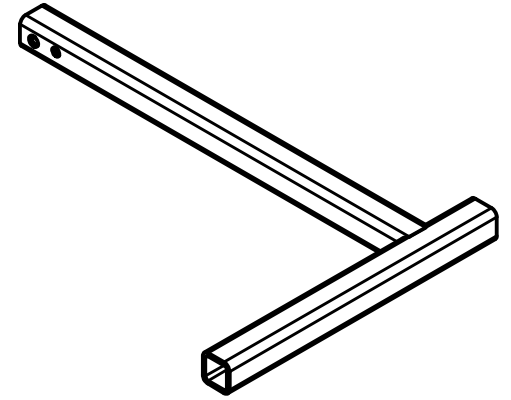
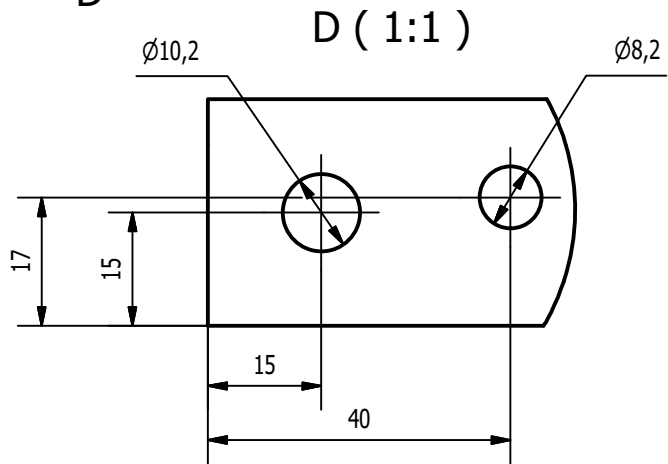
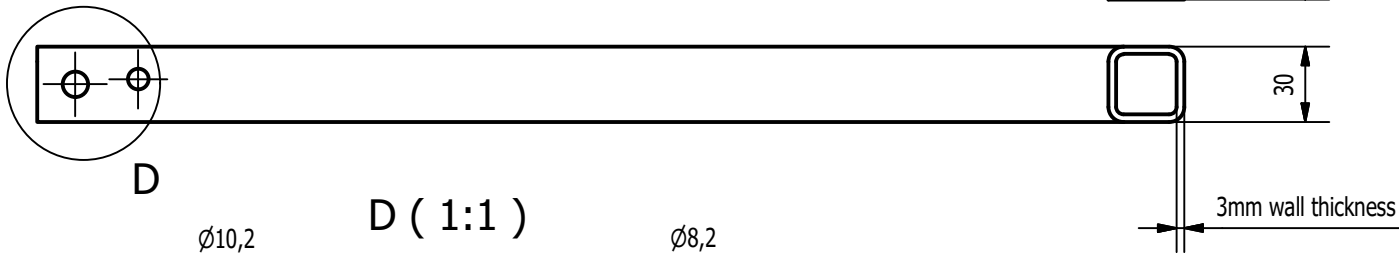
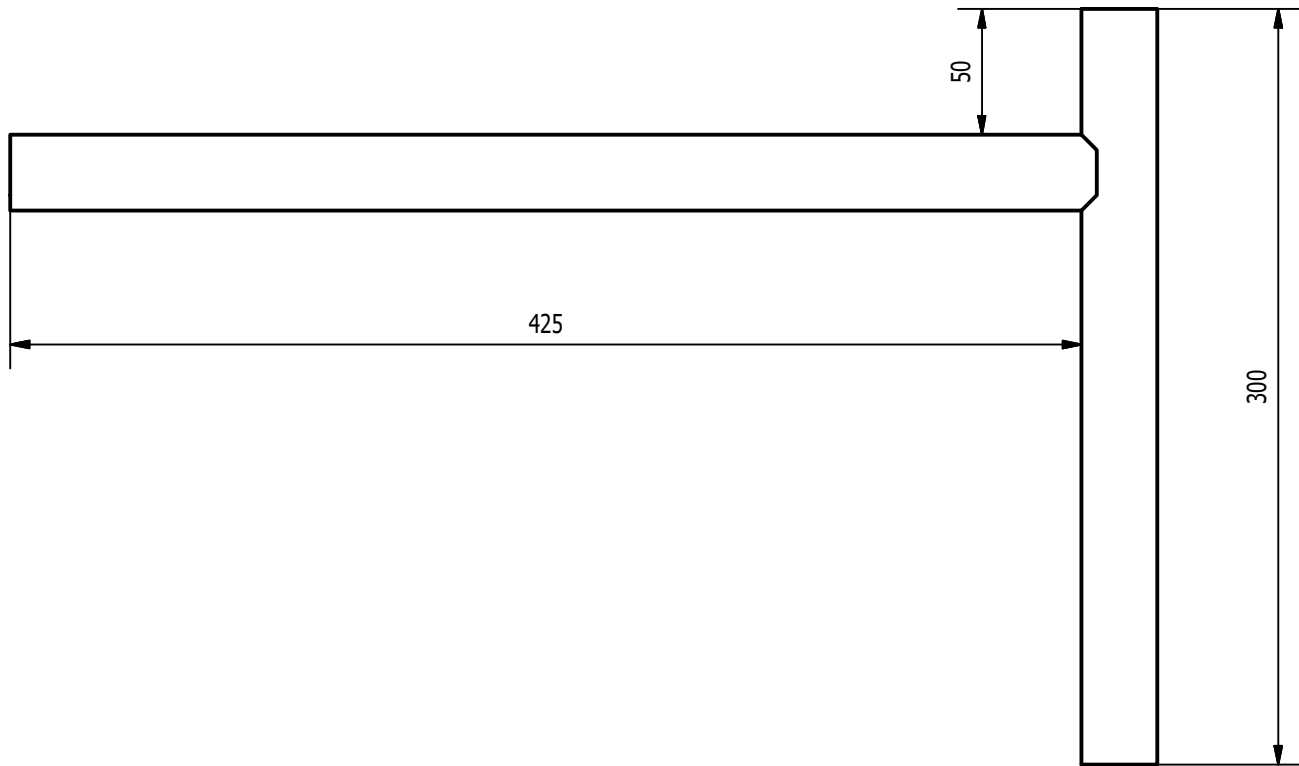


Designed by dotharth	ArcheryTalk		Date 08-01-17
Bow press		Mass 1,8 kg	Material Steel, Mild
Feet support		Scale 1 : 2	Sheet 6 / 20

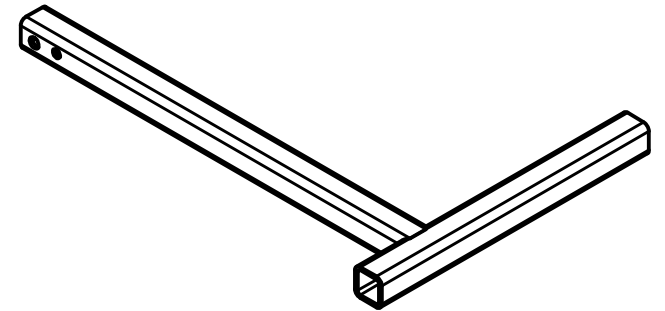


Designed by dotharth	ArcheryTalk	Date 08-01-17
Bow press		Mass Material Steel
Handle..for adult only ! (118lbs)		Scale 2:3 Sheet 7 / 20

Handle.ipt

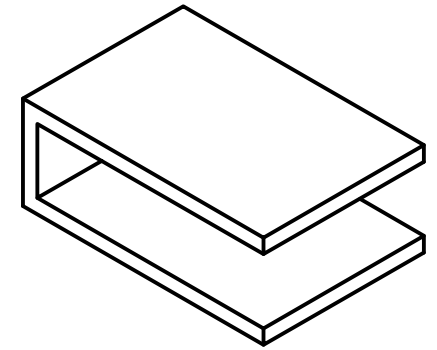
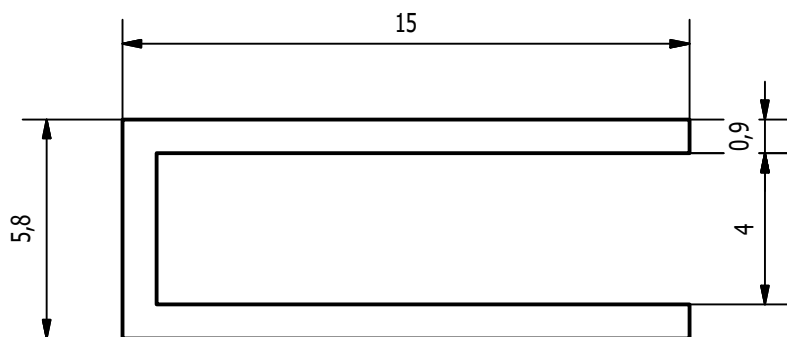
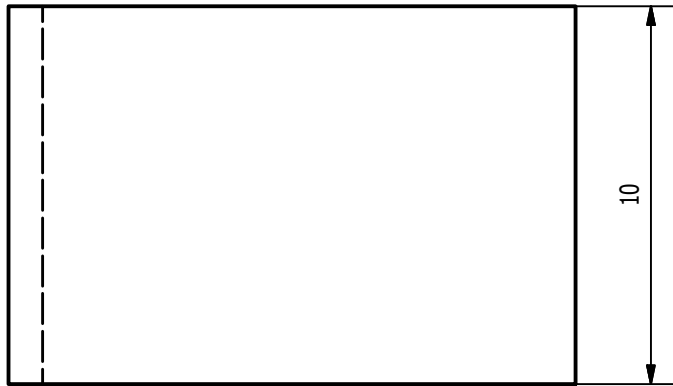


Right foot 1 : 6

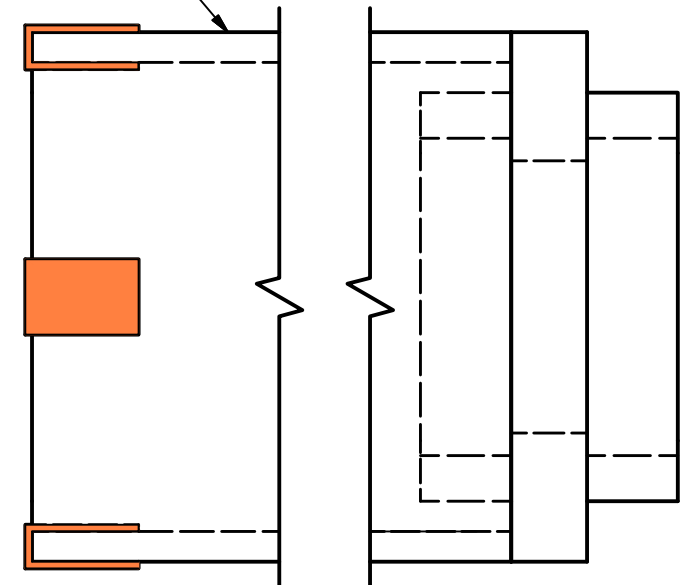


Left foot 1 : 6

Designed by dotharth	ArcheryTalk	Date 08-01-17
Bow press		Mass 1,7 kg
Right foot assembly		Material
		Scale 1 : 3
		Sheet 8 / 20

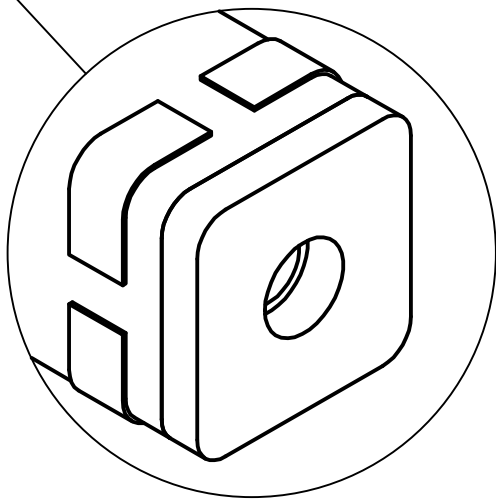
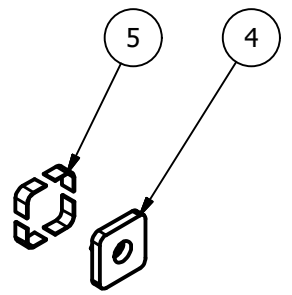
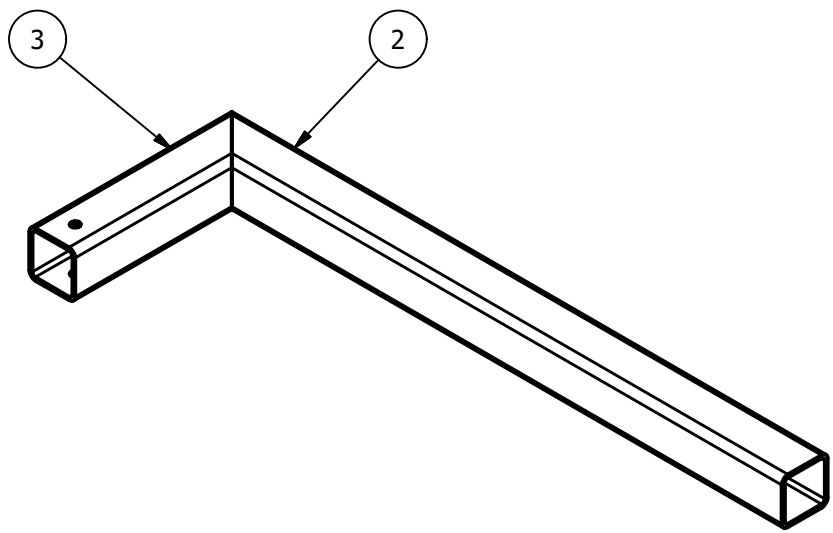
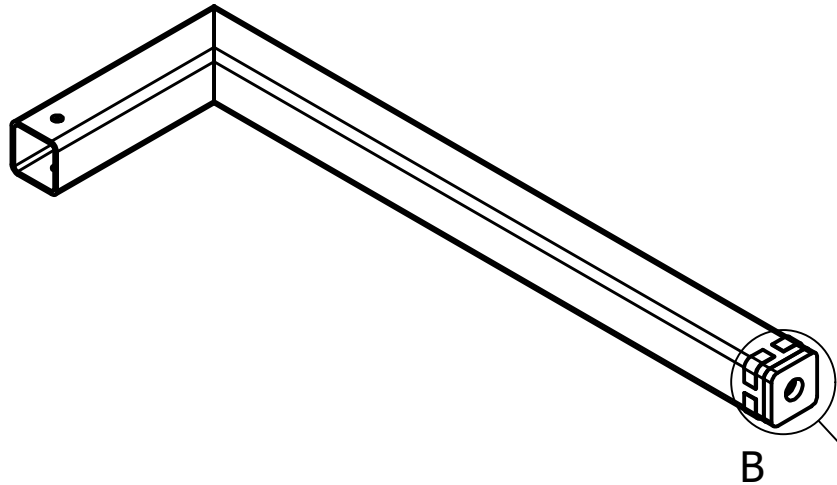


Base 70mm square tube



Spacer position 1:1

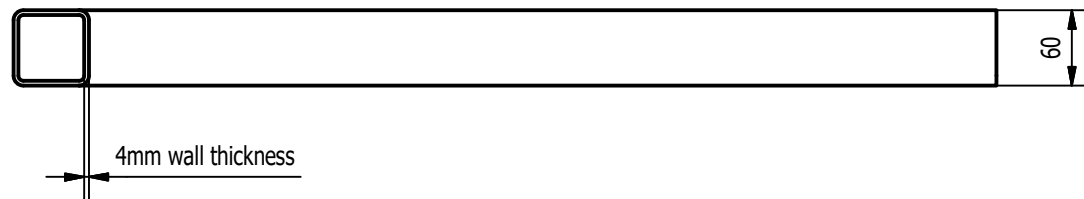
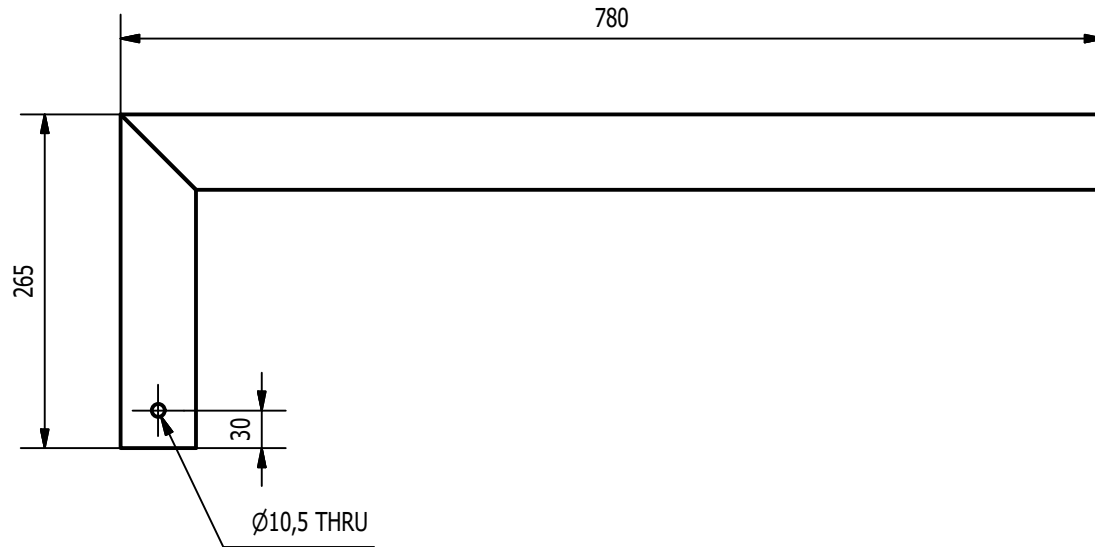
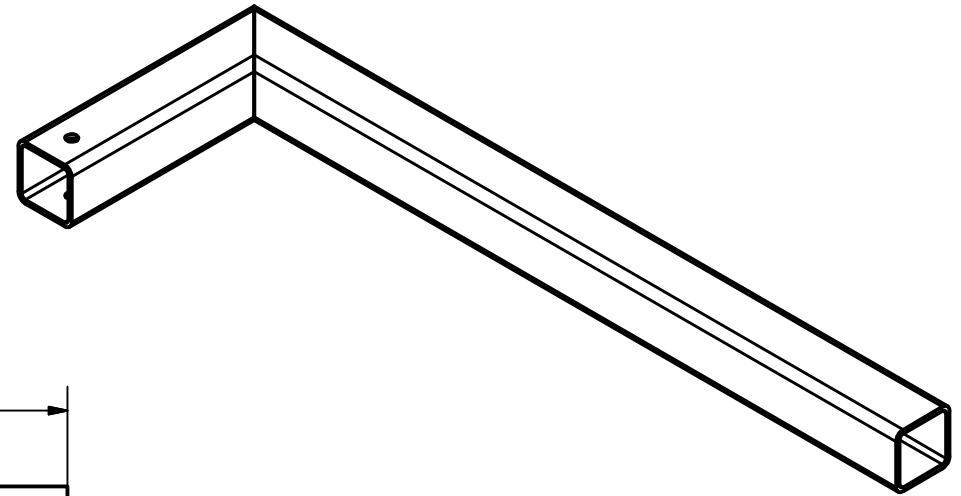
Designed by dotharth	ArcheryTalk	Date 08-01-17
Bow press		Material Steel
Spacer 0.9mm		Scale 5 : 1
		Sheet 9 / 20



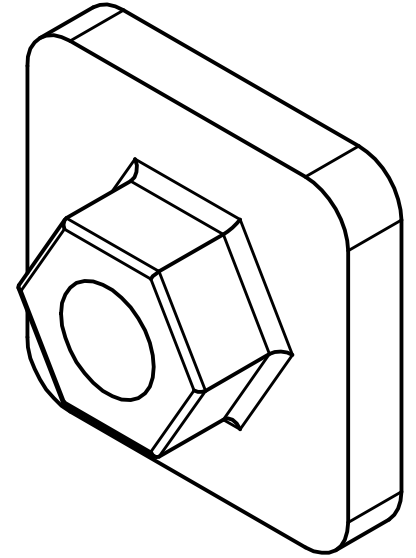
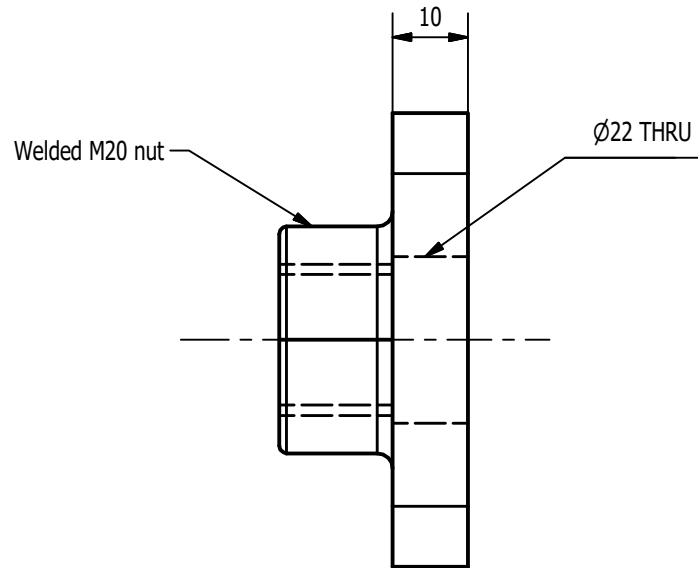
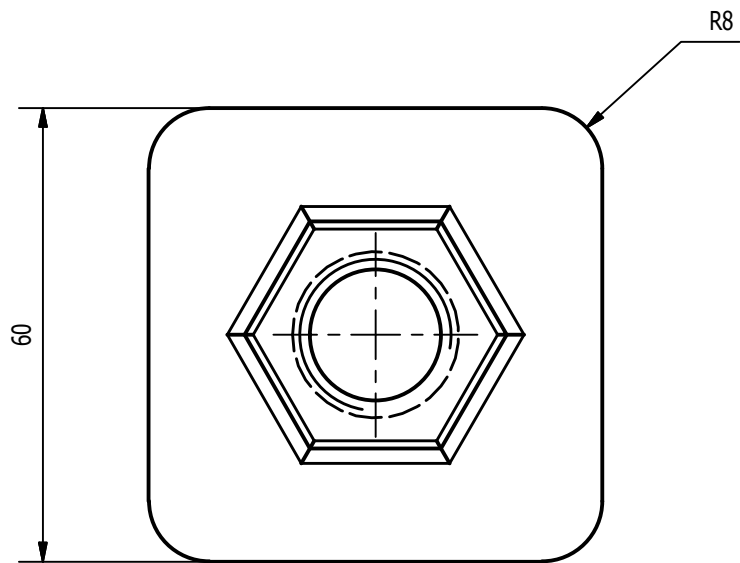
B (2:3)

ITEM	QTY	PART NUMBER	DESCRIPTION
2	780,000 mm	ISO 10799-2 - 60x60x4 - 780	Structural steels - Cold-formed, welded, structural hollow sections
3	265,000 mm	ISO 10799-2 - 60x60x4 - 265	Structural steels - Cold-formed, welded, structural hollow sections
4	1	End cap	With welded M20 nut
5	8	Slider spacer	thickness = 0.9mm

Designed by dotharth	ArcheryTalk		Date 08-01-17
Bow press		Mass 6.9 kg	Material
Slider assembly		Scale 1 : 7	Sheet 10 / 20

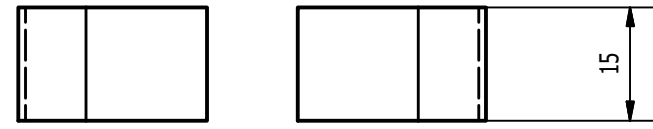
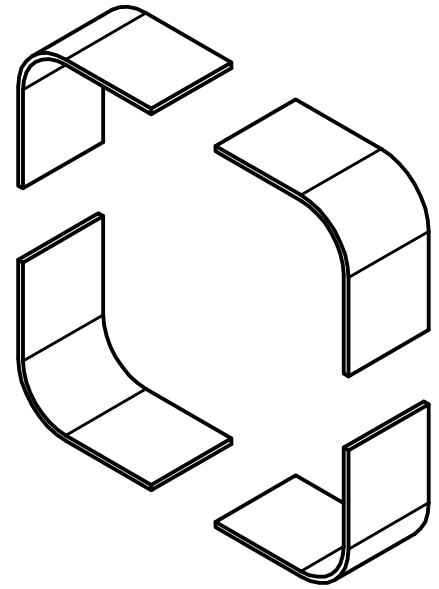
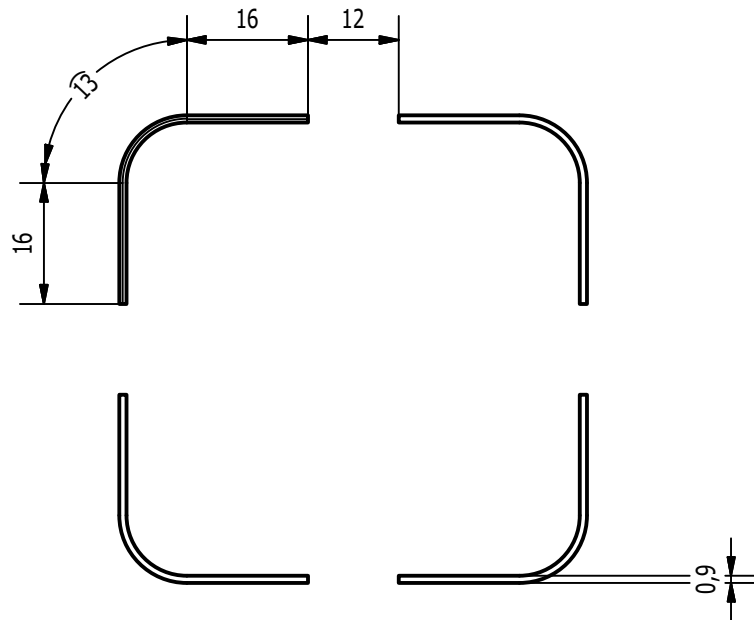


Designed by dotharth	ArcheryTalk	Date 08-01-17
Bow press		Mass 6.9 kg
Slider assembly		Material
		Scale 1 : 6
		Sheet 11 / 20

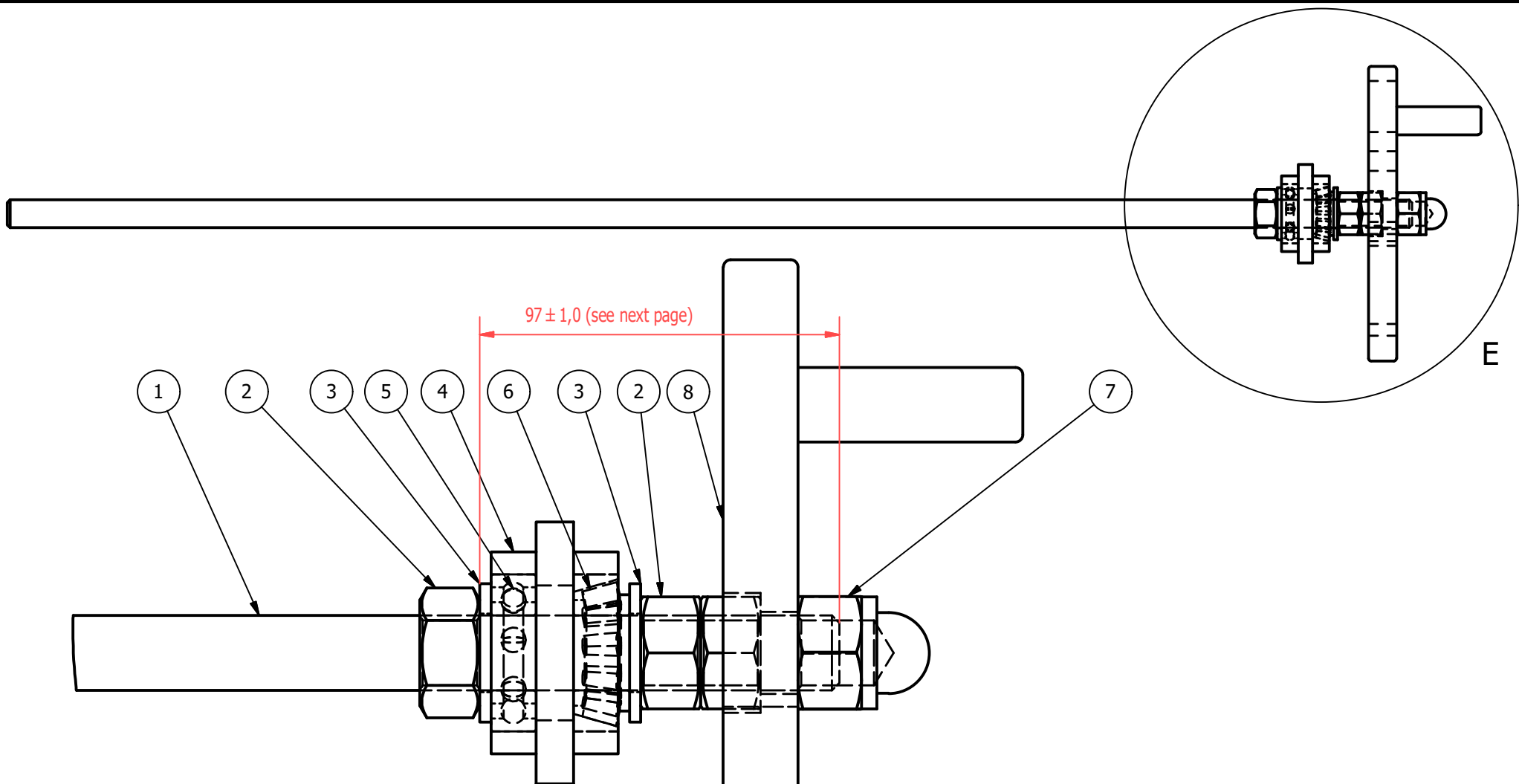


Designed by dotharth	ArcheryTalk	Date 08-01-17
Bow press		Mass 0.3 kg
End cap		Material Steel, Mild
		Scale 1 : 1
		Sheet 12 / 20

End cap.ipt



Designed by dotharth	ArcheryTalk	Date 08-01-17
Bow press		Mass
Slider spacer 0.9mm		Material Steel
		Scale 1 : 1
		Sheet 13 / 20

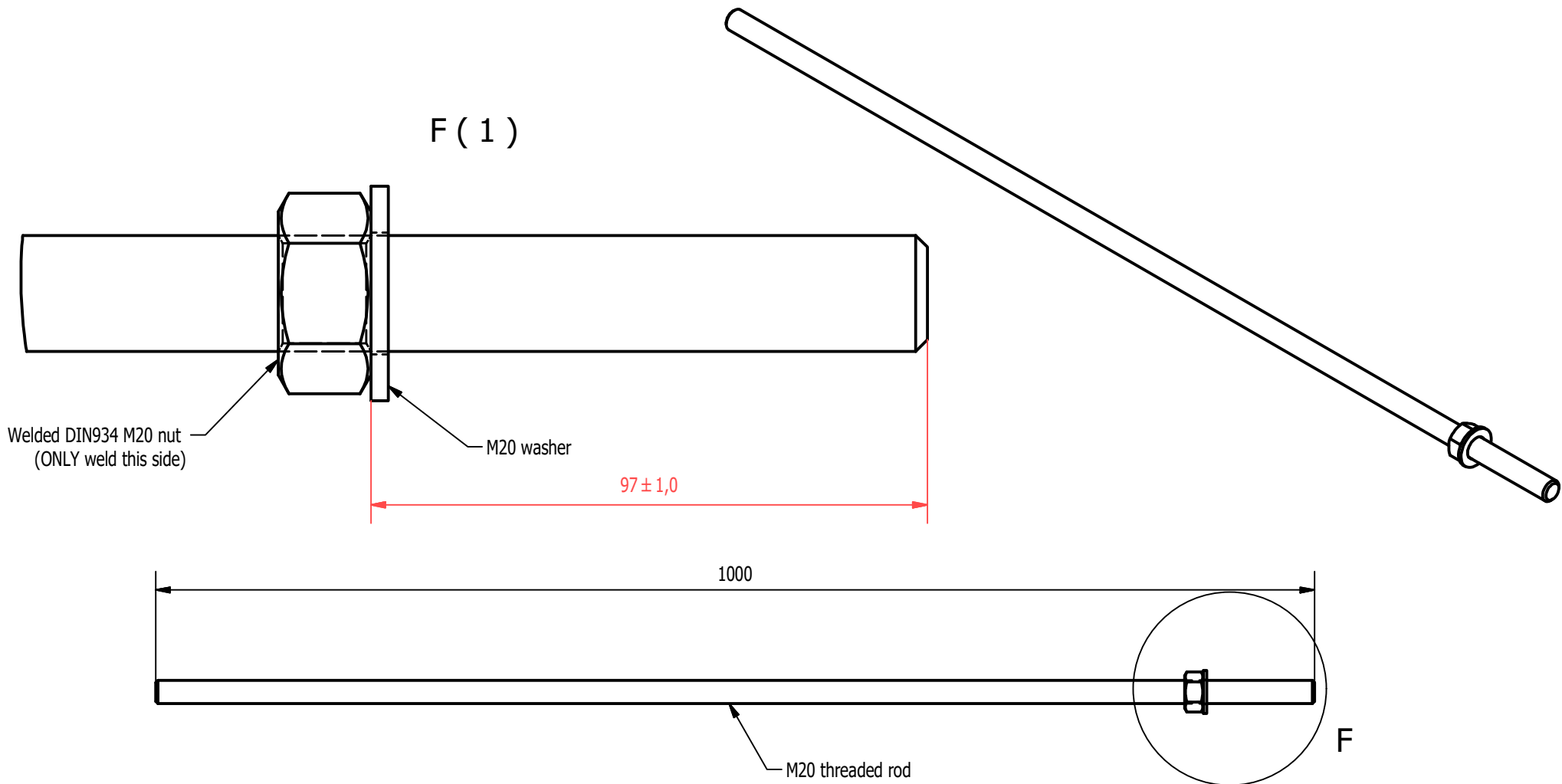


97 ± 1,0 (see next page)

E (2:3)

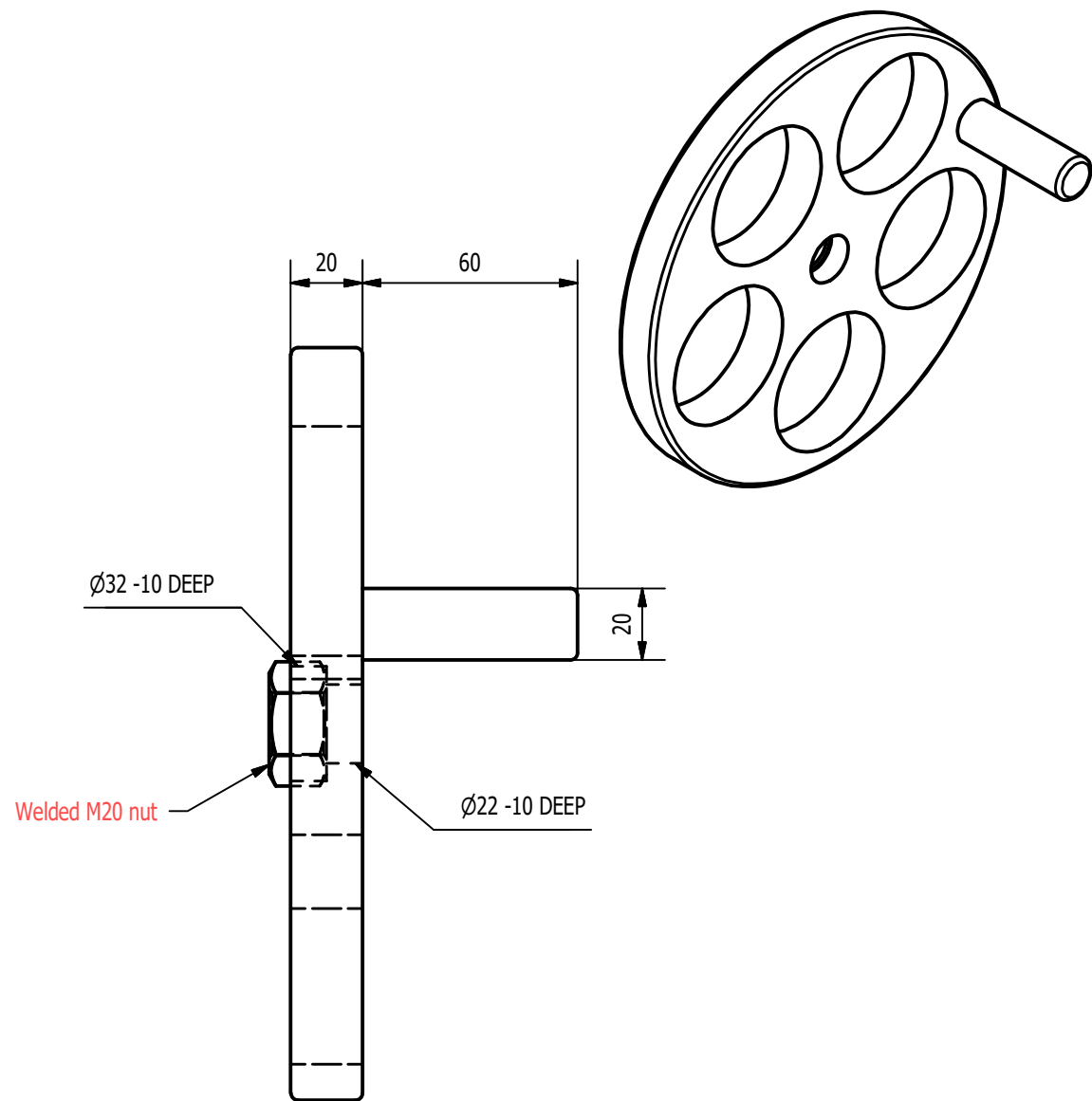
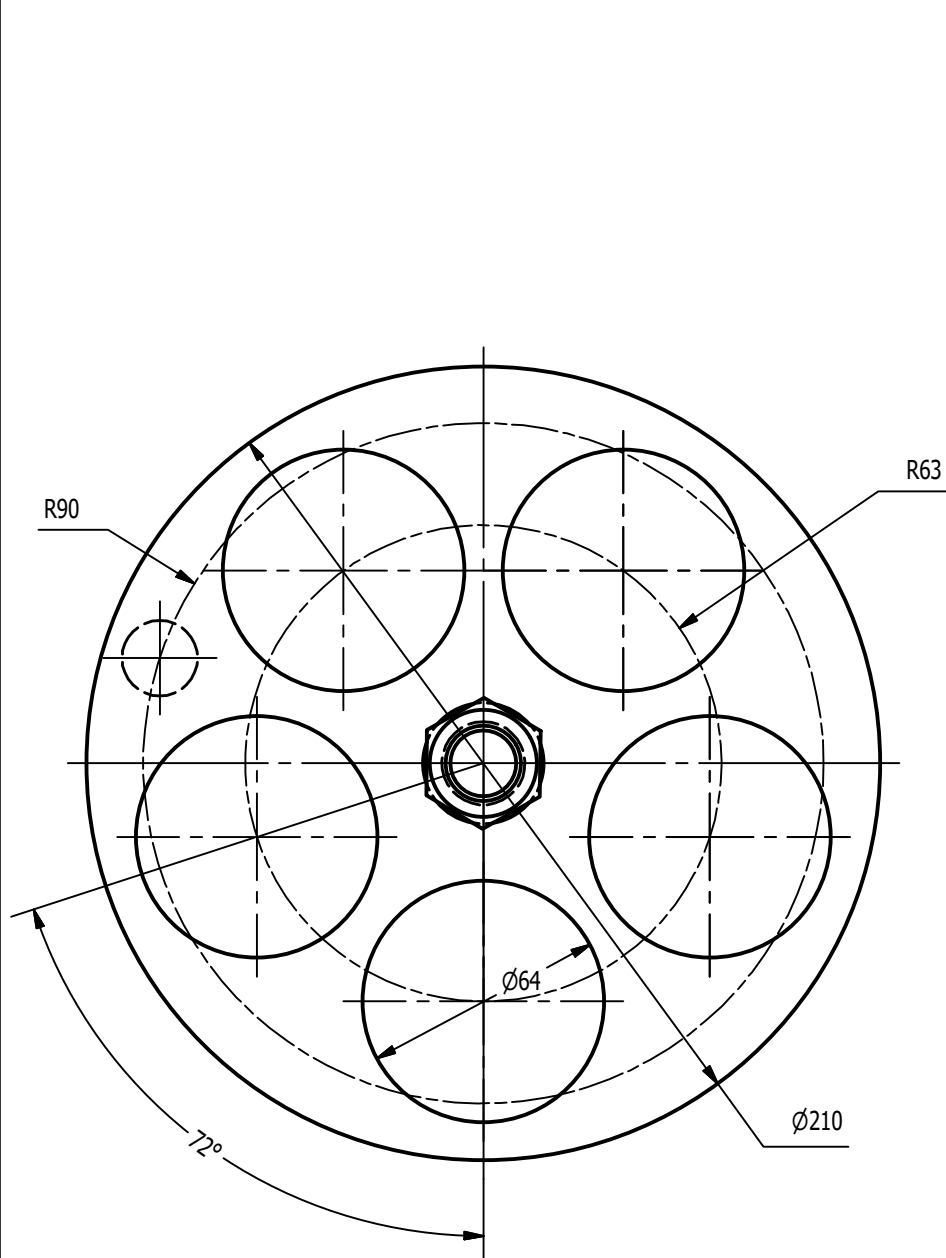
ITEM	QTY	PART NUMBER	DESCRIPTION
1	1	Threaded rod	M20 x 1000mm
2	3	DIN 934 - M20	Hex Nut
3	2	DIN 125 - A 21	Washer
4	1	Bearing adapter	
5	1	DIN 625 SKF - SKF 6004-2Z	Deep groove ball bearings single row with two Z shields SKF
6	1	DIN 720 SKF - SKF 32004 X/Q	Tapered roller single row bearings SKF
7	1	DIN 986 - M20	Hexagon Domed Cap Nuts
8	1	Hand weel	

Designed by dotharth	ArcheryTalk		Date 08-01-17
Bow press			Mass N/A
Threaded rod full assembly			Material
			Scale 1:4
			Sheet 14 / 20



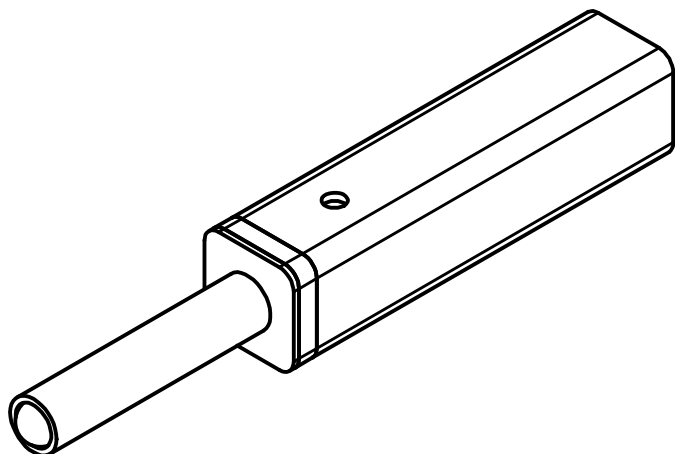
Red dimension : this dimension is correct only if you use M20 rod with DIN 934 hex nut. It is better to fully build the press BEFORE welding this nut in place in order to determine the correct rod length you need protruding. Especially if you plan to use a cap nut at the end of the rod.

Designed by dotharth	ArcheryTalk	Date 08-01-17
Bow press		Mass 2,5 kg
Threaded rod assembly		Material
		Scale 1 : 5
		Sheet 15 / 20

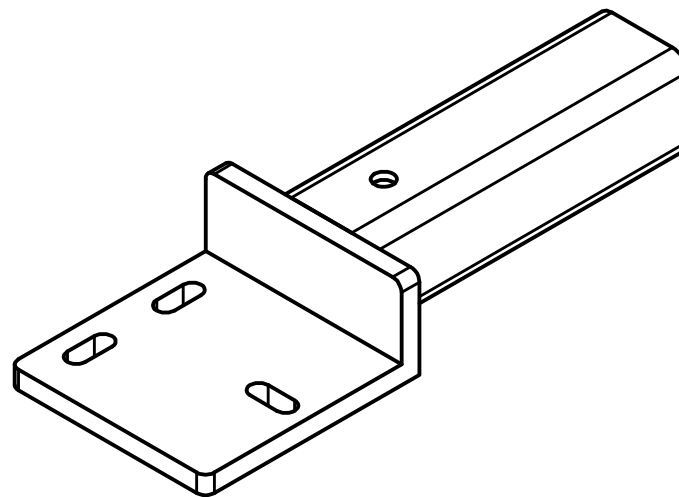


Note : Grind the corners of the nut to make it fit in the Ø32 hole

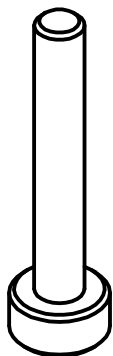
Designed by dotharth	ArcheryTalk	Date 08-01-17
Bow press		Mass 3.0 kg
Hand wheel assembly		Material
		Scale 1 : 2
		Sheet 16 / 20



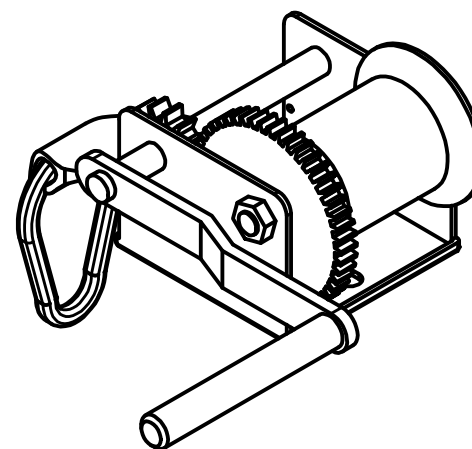
Bow support



Hand winch support

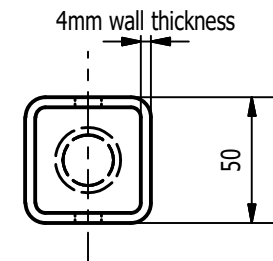
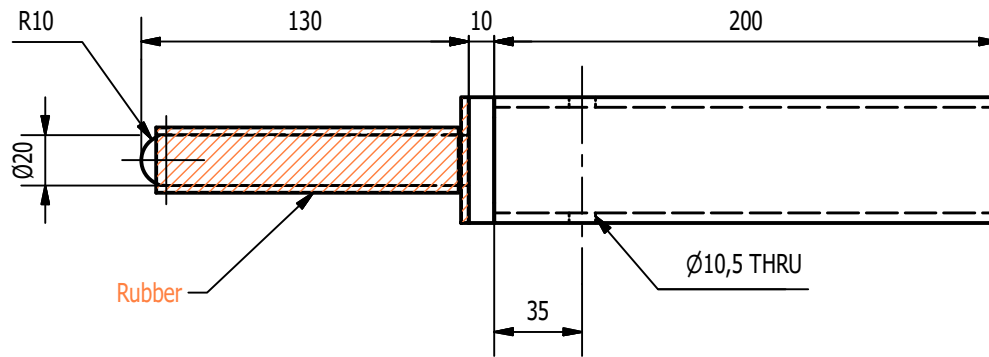
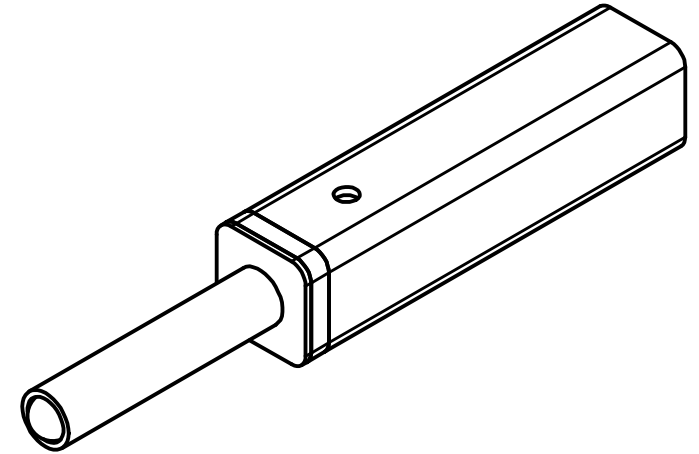


Pin Ø10 (x2)

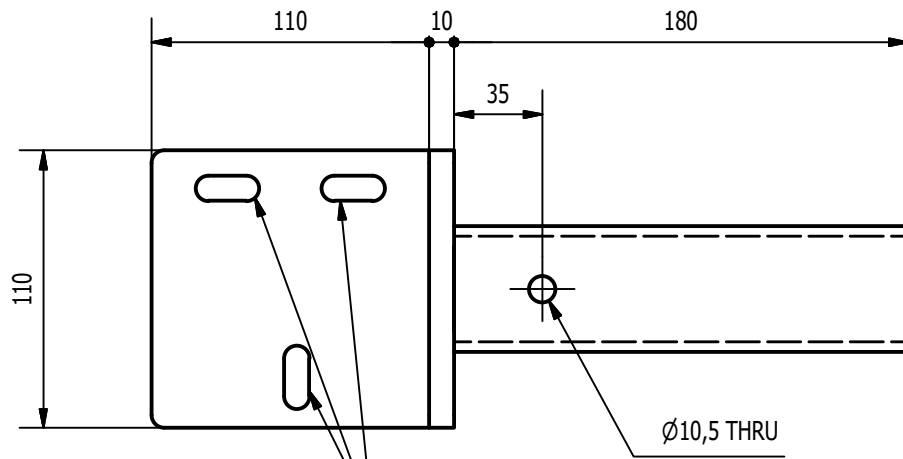


Hand winch

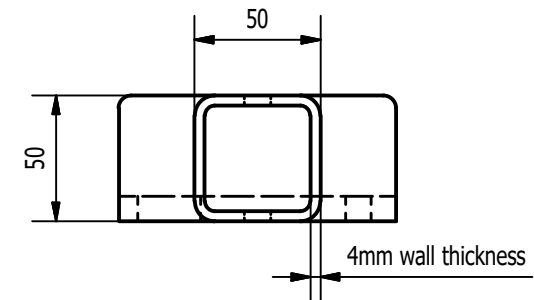
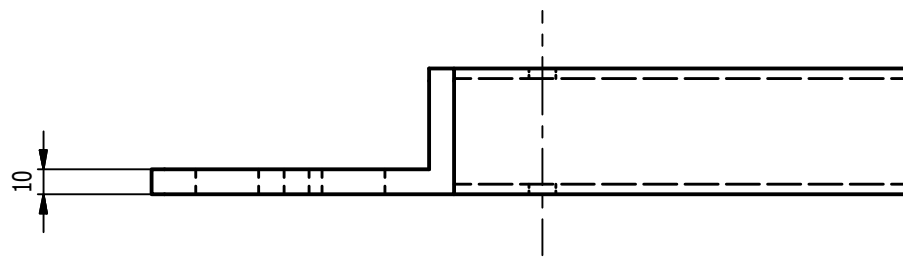
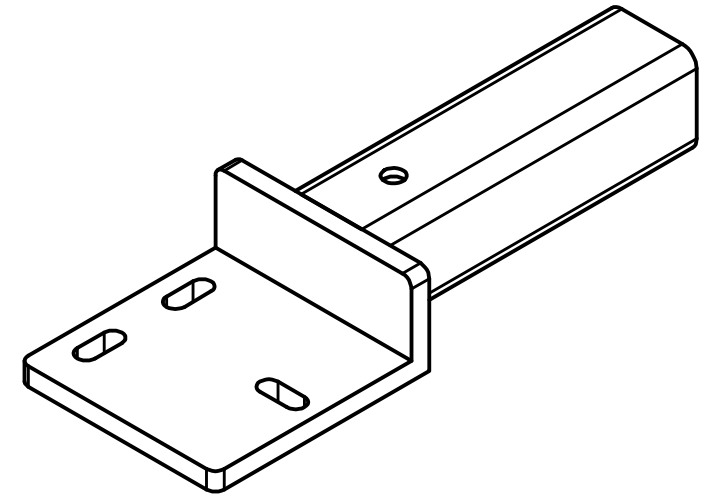
Designed by dotharth	ArcheryTalk	Date 08-01-17
Bow press		Mass
Draw board assembly		Material Steel
		Scale 1:3
		Sheet 17 / 20



Designed by dotharth	ArcheryTalk		Date 08-01-17
Bow press		Mass 1.8 kg	Material Steel
Draw board bow support		Scale 1 : 3	Sheet 18 / 20



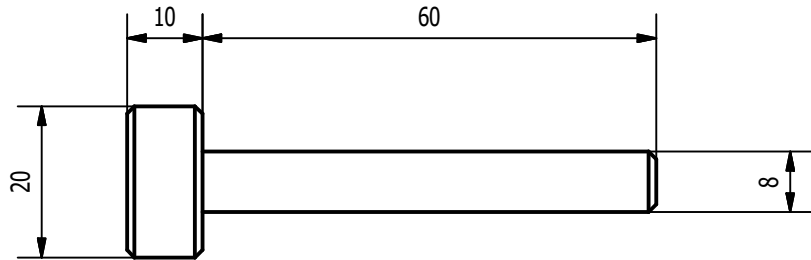
Adjust the holes dimensions and locations to fit the hand winch you have.



Designed by dotharth	ArcheryTalk		Date 08-01-17
Bow press		Mass	Material Steel
Hand winch support		Scale 1 : 3	Sheet 19 / 20



Pin Ø10 (x2)



Pin Ø8 (x2)

Designed by dotharth	ArcheryTalk	Date 08-01-17
Bow press		Mass Material Steel
Pin Ø10 & Ø8		Scale 1 : 1 Sheet 20 / 20