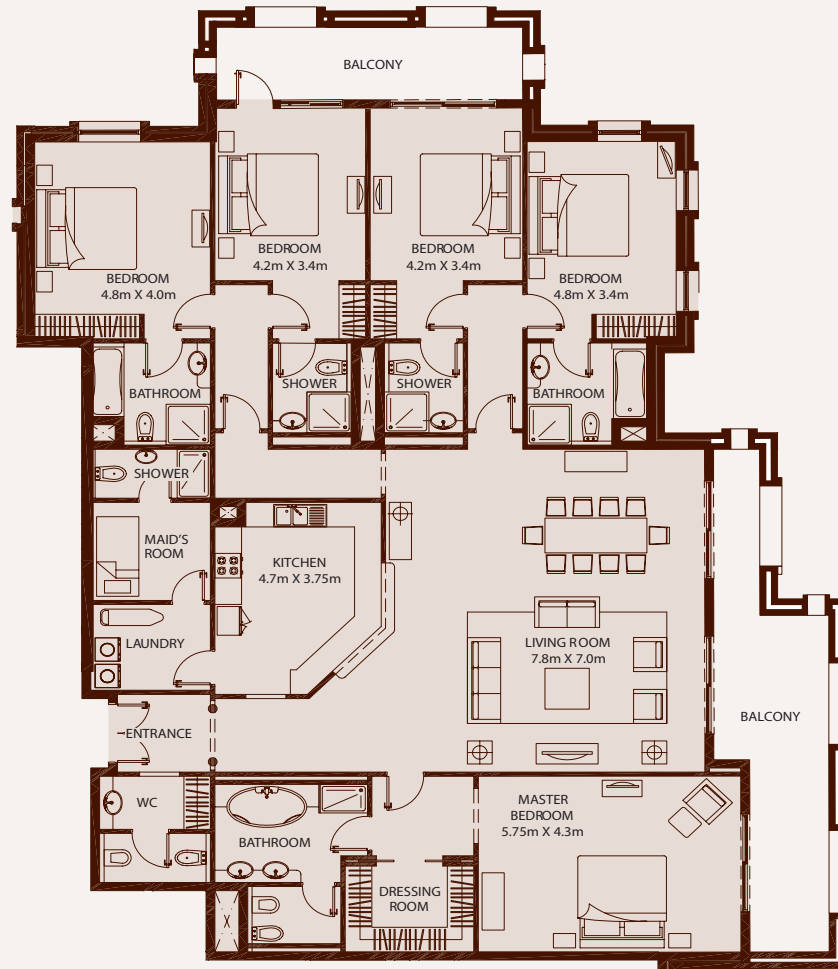
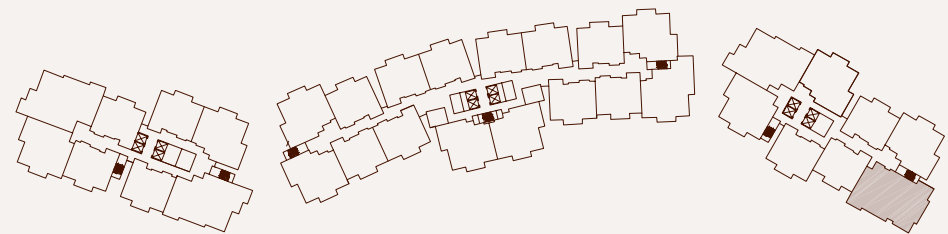


APARTMENTS

UNIT TYPE A - 5 BEDROOM

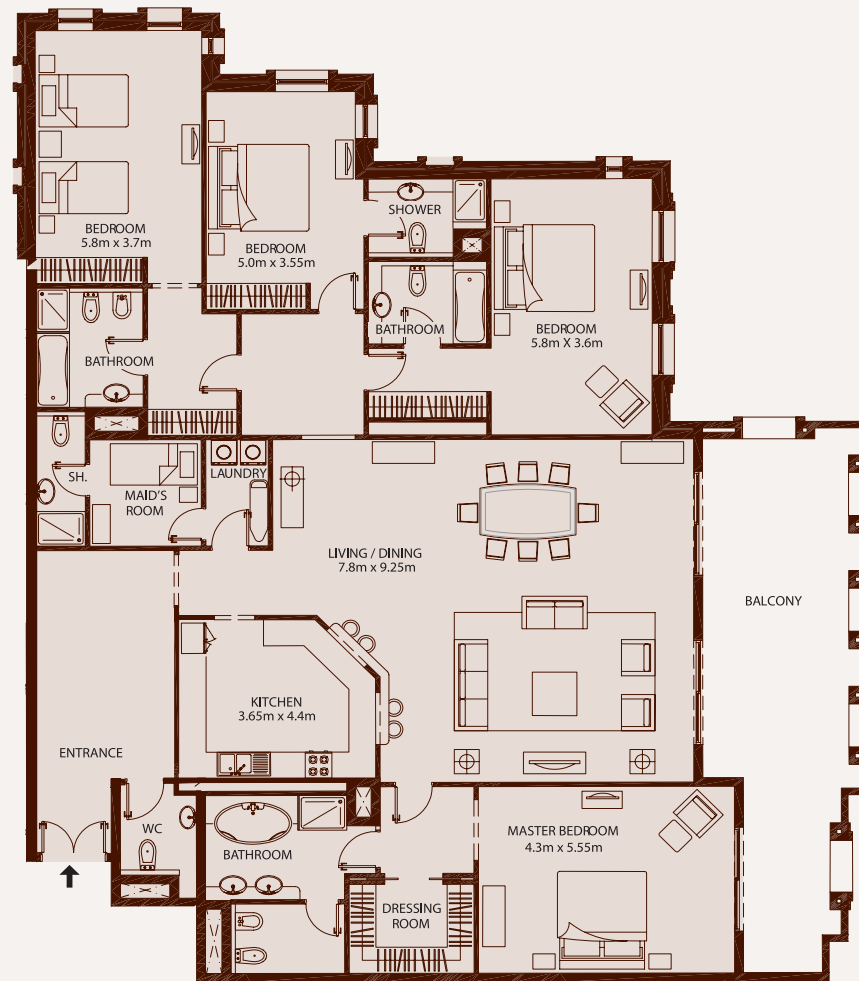


Apartments - Unit Type A, 5 Bedroom - Approximate Areas		
Unit	295.49m ²	3,181ft ²
Balcony	44.01m ²	474ft ²
Total	339.50m²	3,655ft²



APARTMENTS

UNIT TYPE B1 - 4 BEDROOM

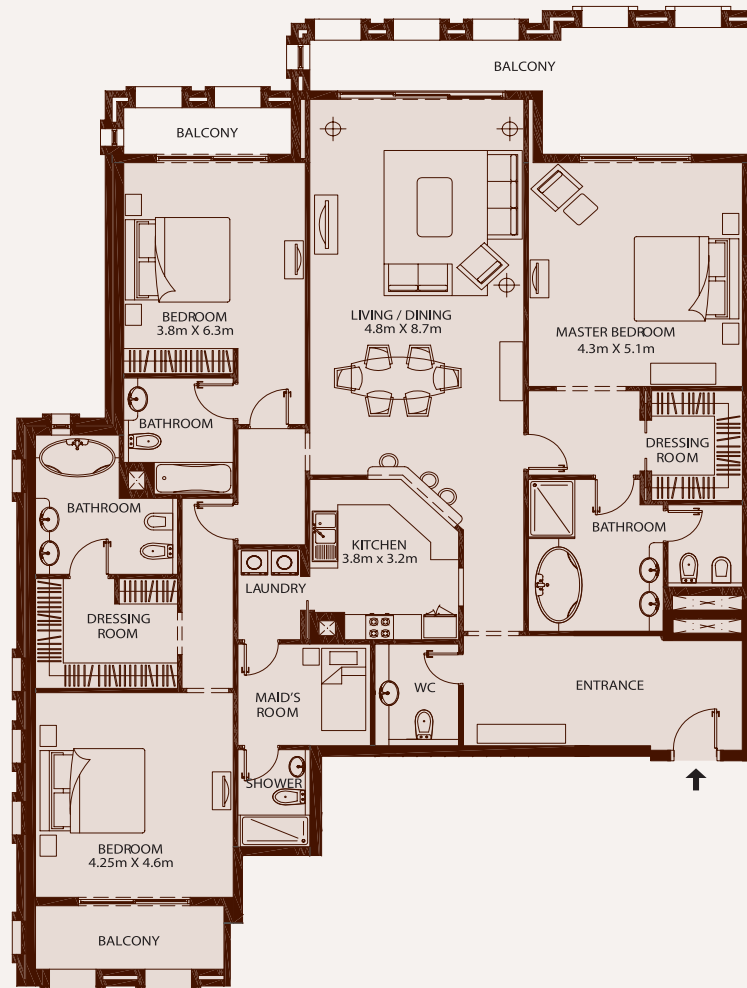


Apartments - Unit Type B1, 4 Bedroom - Approximate Areas		
Unit	296.94m ²	3,196ft ²
Balcony	40.08m ²	431ft ²
Total	337.02m²	3,627ft²

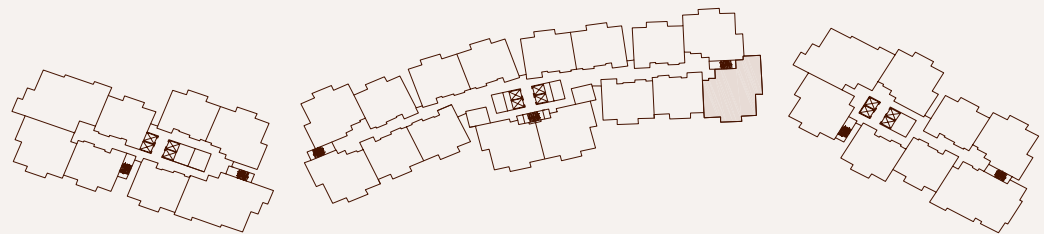


APARTMENTS

UNIT TYPE C - 3 BEDROOM



Apartments - Unit Type C, 3 Bedroom - Approximate Areas		
Unit	238.47m ²	2,567ft ²
Balcony	40.80m ²	439ft ²
Total	279.27m²	3,006ft²

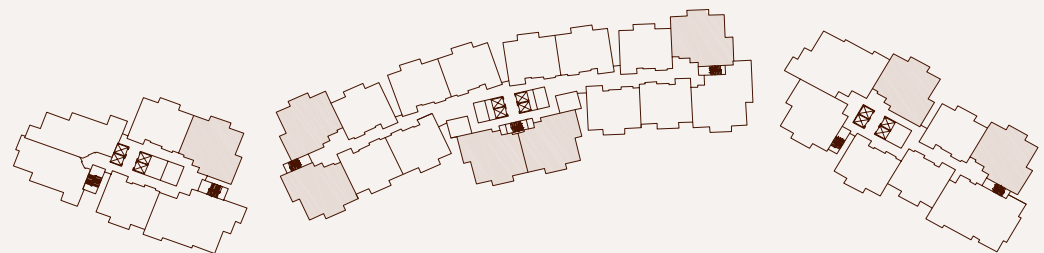


APARTMENTS

UNIT TYPE D1 - 3 BEDROOM

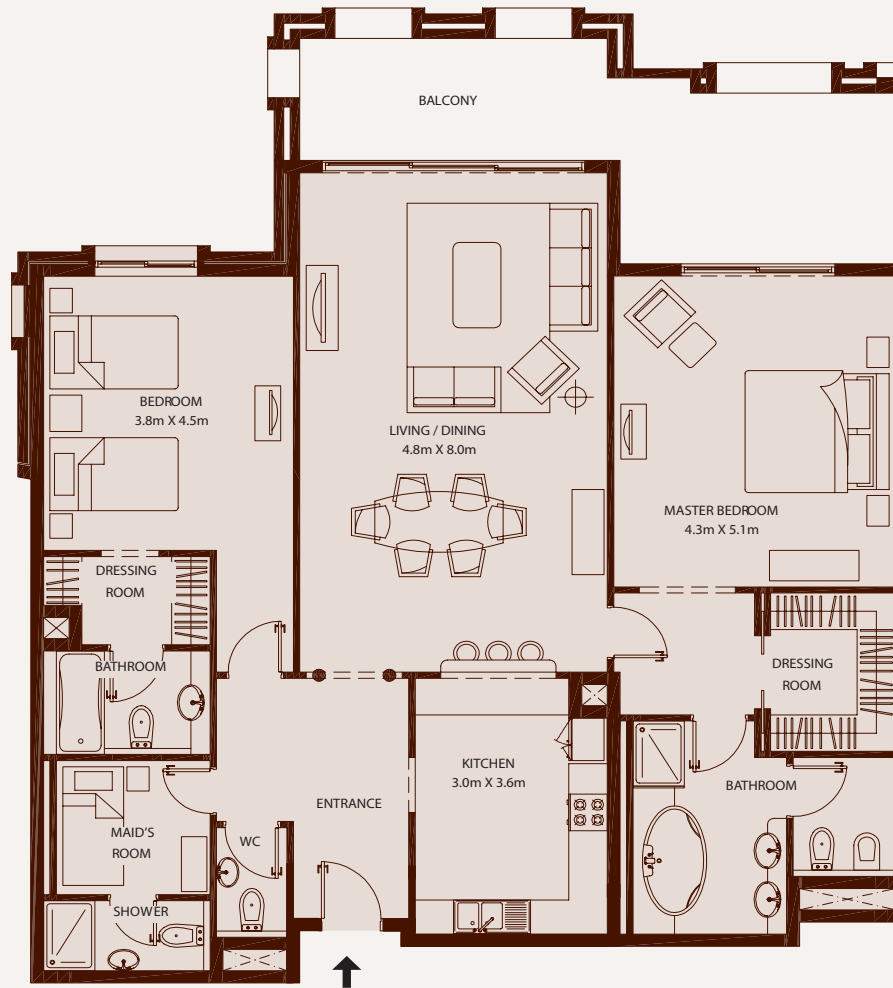


Apartments - Unit Type D1, 3 Bedroom - Approximate Areas		
Unit	199.85m ²	2,151ft ²
Balcony	22.68m ²	244ft ²
Total	222.53m²	2,395ft²

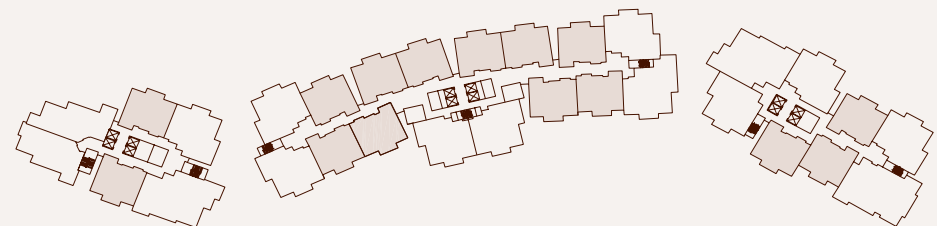


APARTMENTS

UNIT TYPE E - 2 BEDROOM

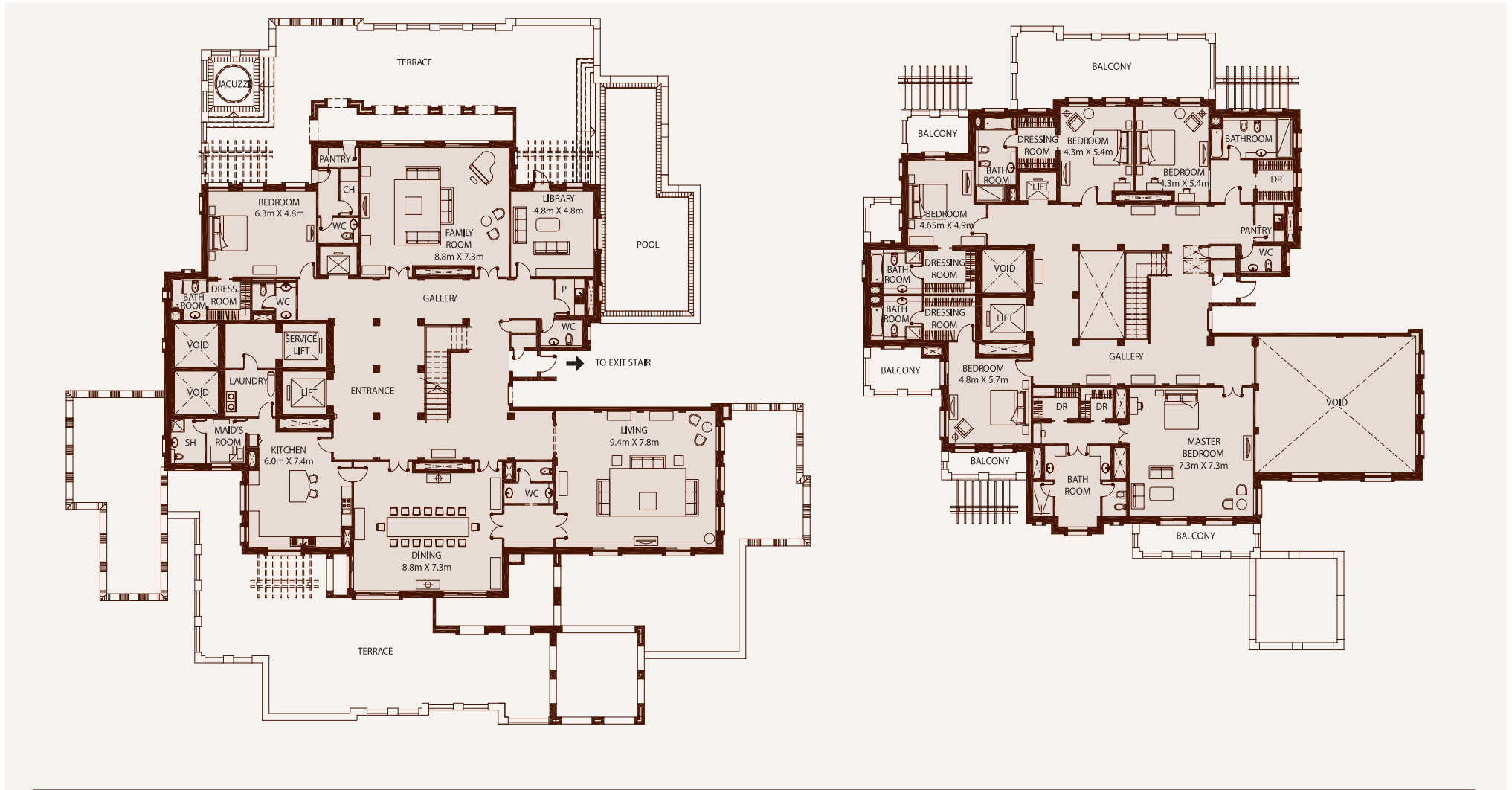


Apartments - Unit Type E, 2 Bedroom - Approximate Areas		
Unit	162.30m ²	1,747ft ²
Balcony	26.90m ²	290ft ²
Total	189.20m²	2,037ft²



PENTHOUSES

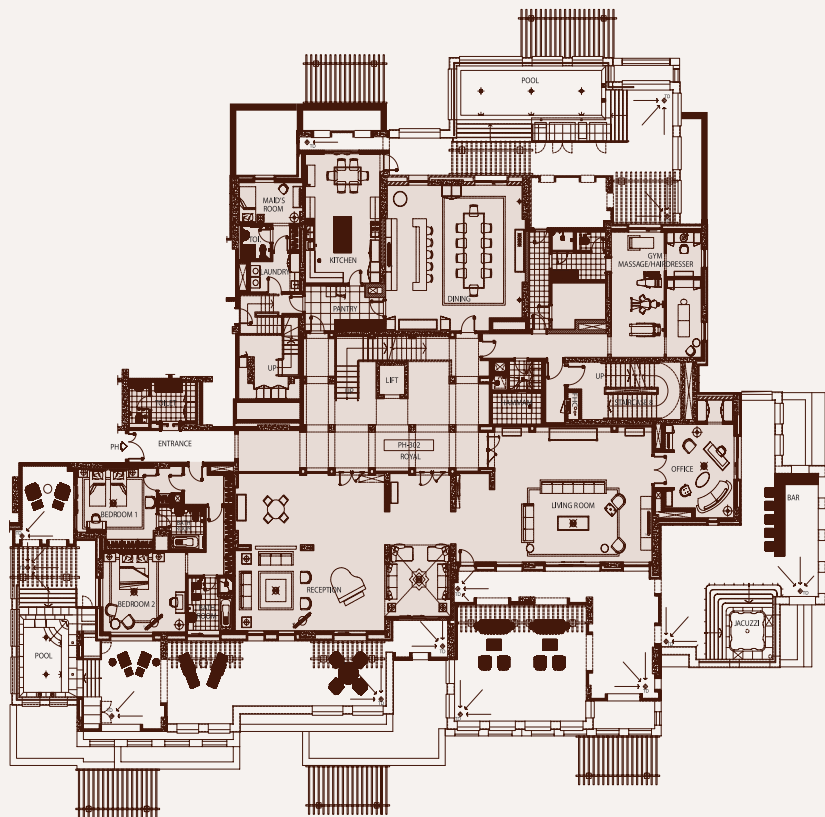
PH101



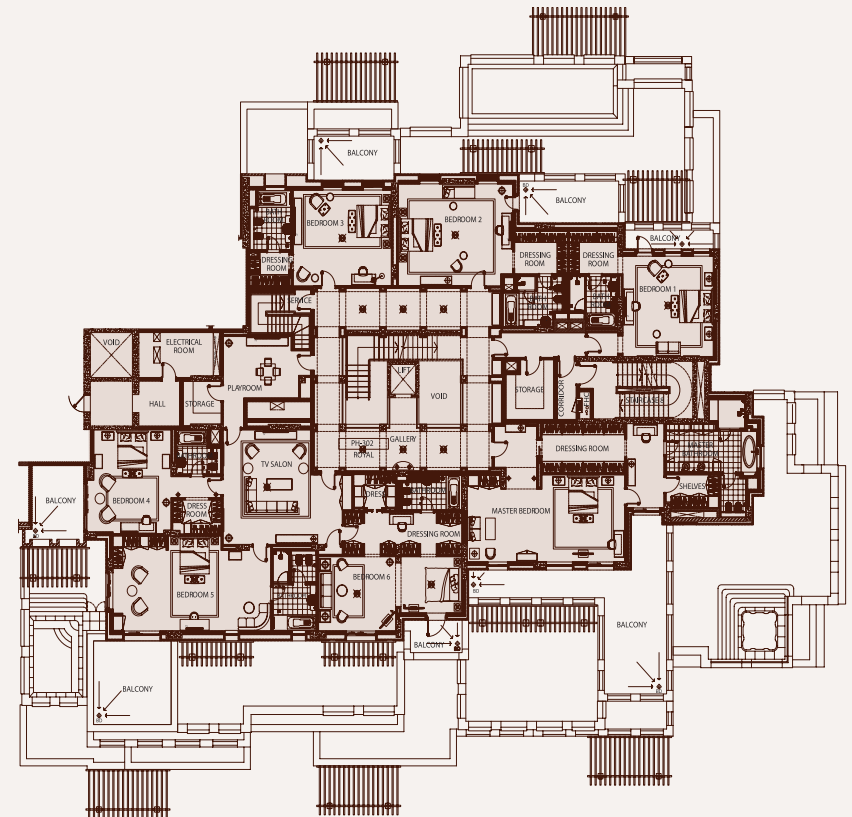
Penthouses - PH101 - Approximate Areas			
Lower Level	Unit	572.48m ²	6,162ft ²
Lower Level	Terrace	563.09m ²	6,061ft ²
Upper Level	Unit	458.72m ²	4,938ft ²
Upper Level	Balcony	99.92m ²	968ft ²
Upper Level	Void	83.00m ²	893ft ²
Total		1,777.21m²	19,022ft²



PENTHOUSES PH302

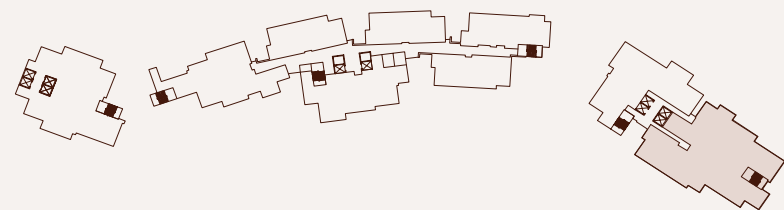


Lower Level



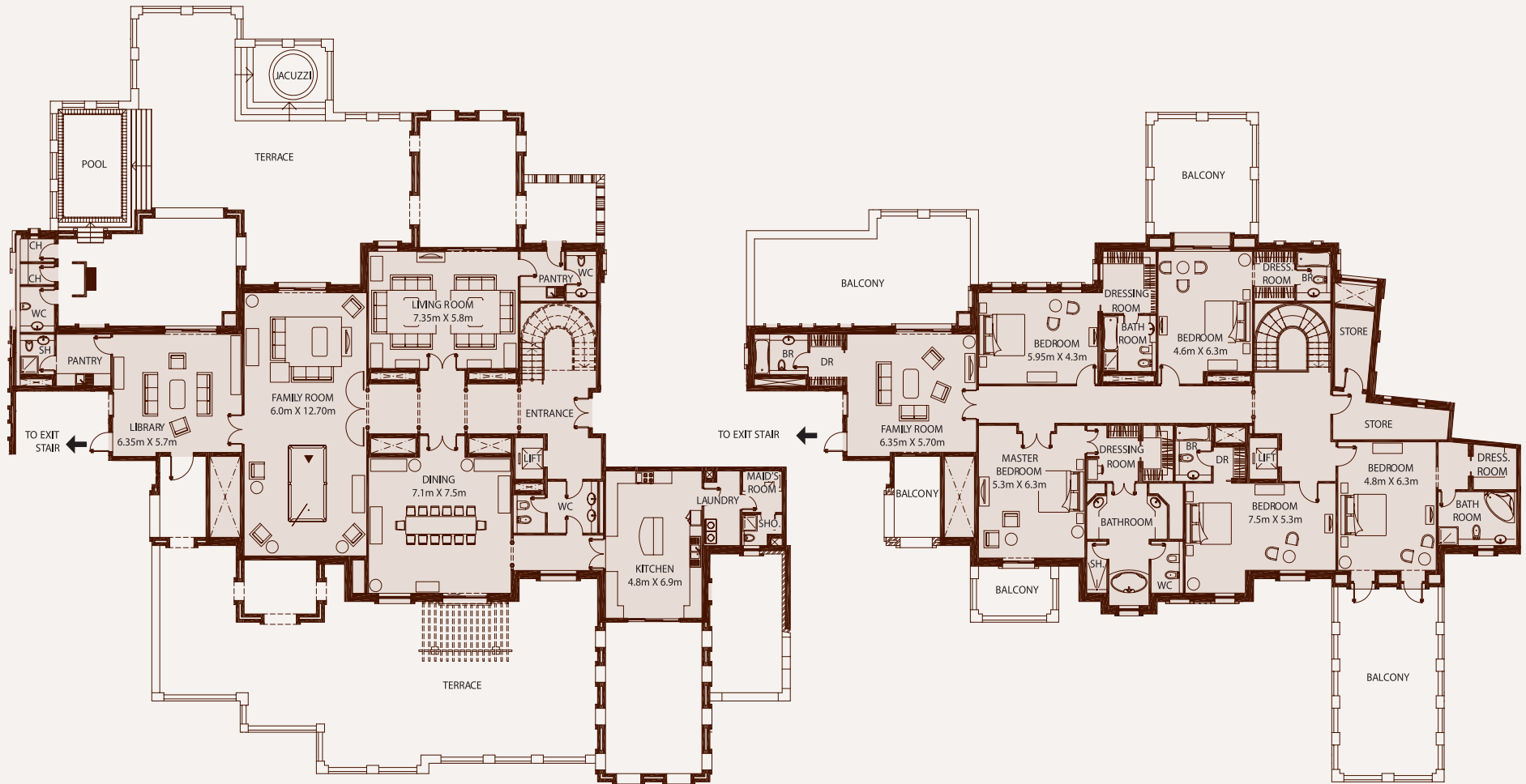
Upper Level

Penthouses - PH302 - Approximate Areas			
Lower Level	Unit	799.08m ²	8,601ft ²
Lower Level	Terrace	486.24m ²	5,233ft ²
Upper Level	Unit	782.00m ²	8,417ft ²
Upper Level	Terrace	153.52m ²	1,652ft ²
Total		2,220.84m²	23,905.12ft²



PENTHOUSES

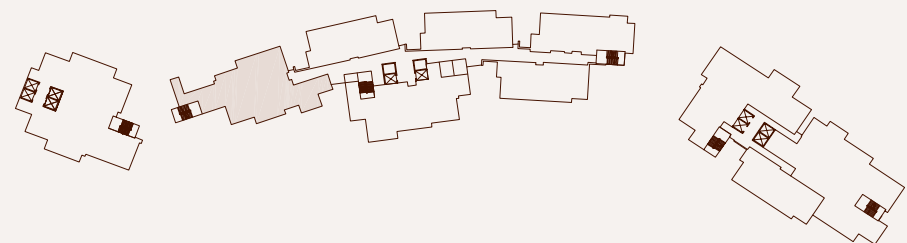
PH201



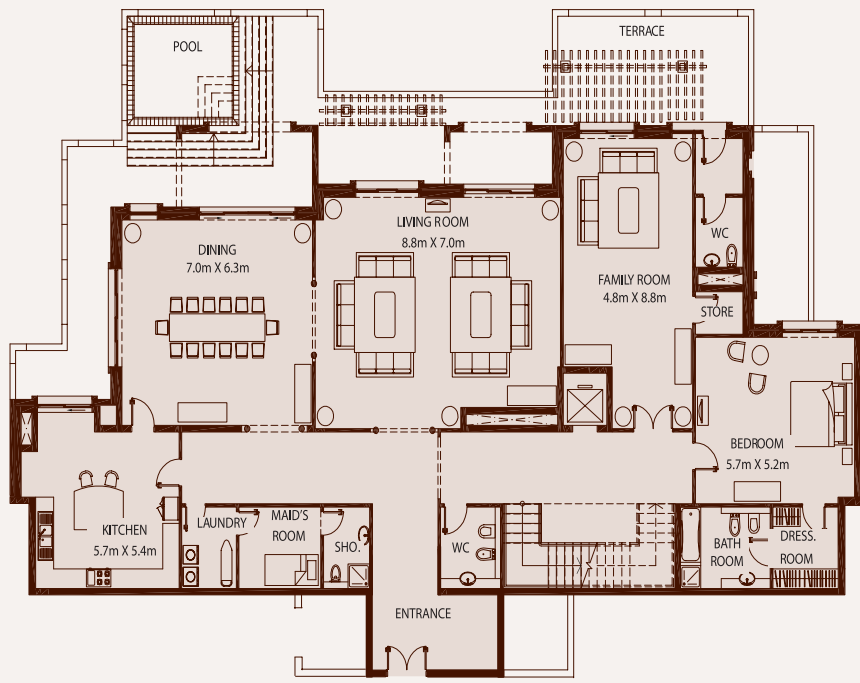
Lower Level

Upper Level

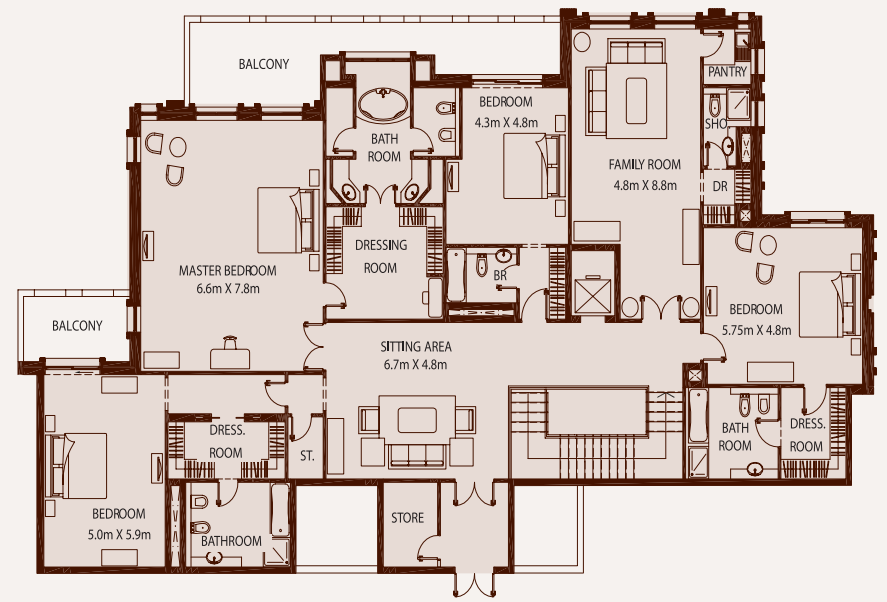
Penthouses - PH201 - Approximate Areas			
Lower Level	Unit	404.38m ²	4,353ft ²
Lower Level	Terrace	522.29m ²	5,622ft ²
Upper Level	Unit	424.84m ²	4,573ft ²
Upper Level	Balcony	166.34m ²	1,790ft ²
Total		1517.85m²	16,338ft²



PENTHOUSES PH206

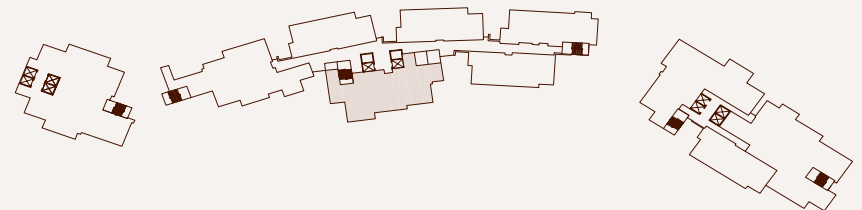


Lower Level



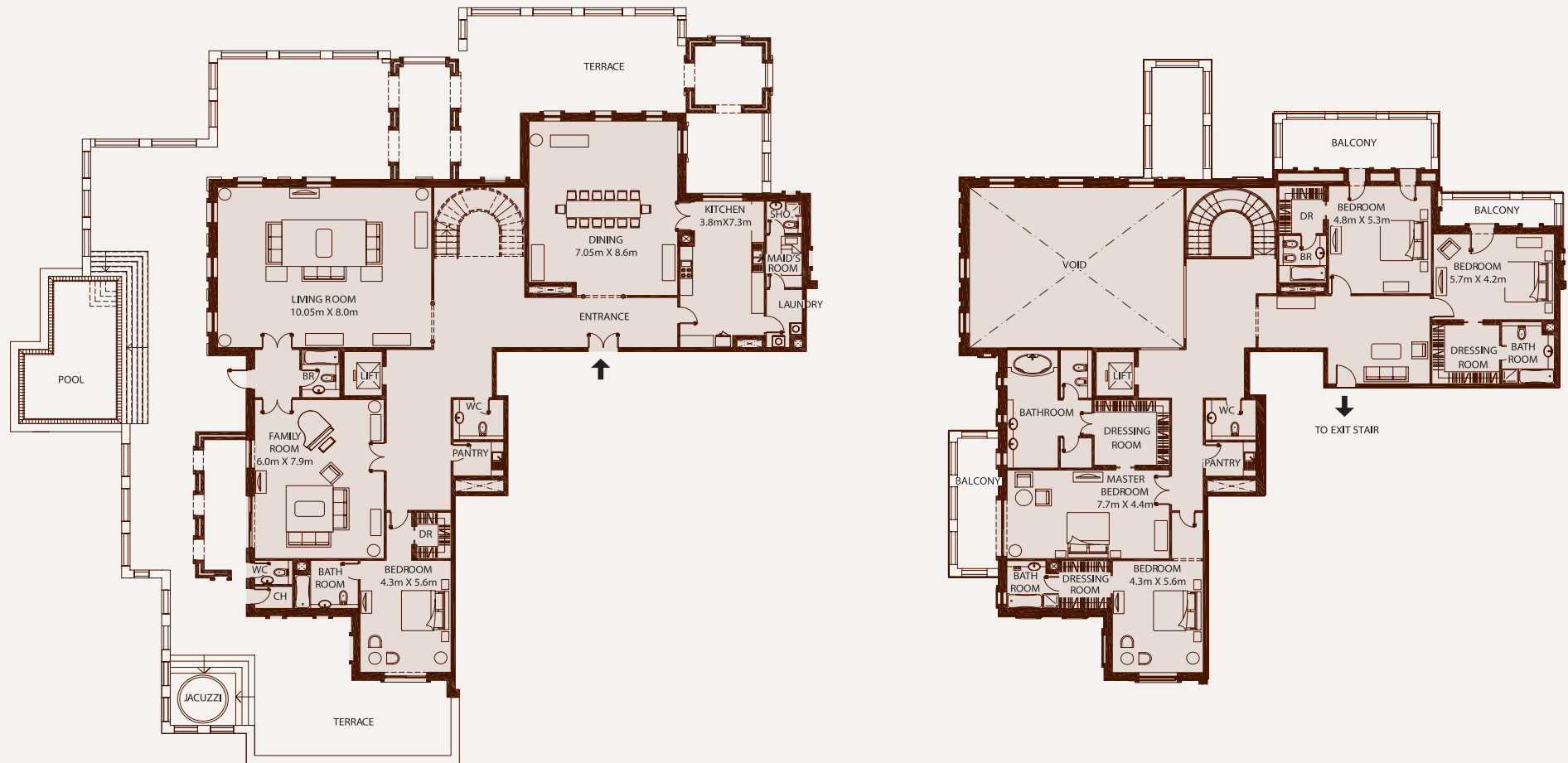
Upper Level

Penthouses - PH206 - Approximate Areas			
Lower Level	Unit	367.29m ²	3,953ft ²
Lower Level	Terrace	126.49m ²	1,361ft ²
Upper Level	Unit	381.53m ²	4,107ft ²
Upper Level	Balcony	36.33m ²	391ft ²
Total		911.64m²	9,812ft²



PENTHOUSES

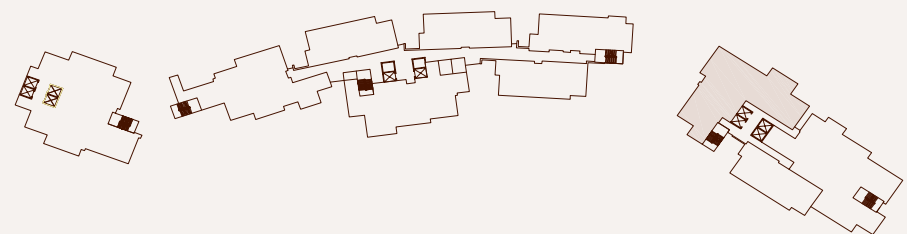
PH301



Lower Level

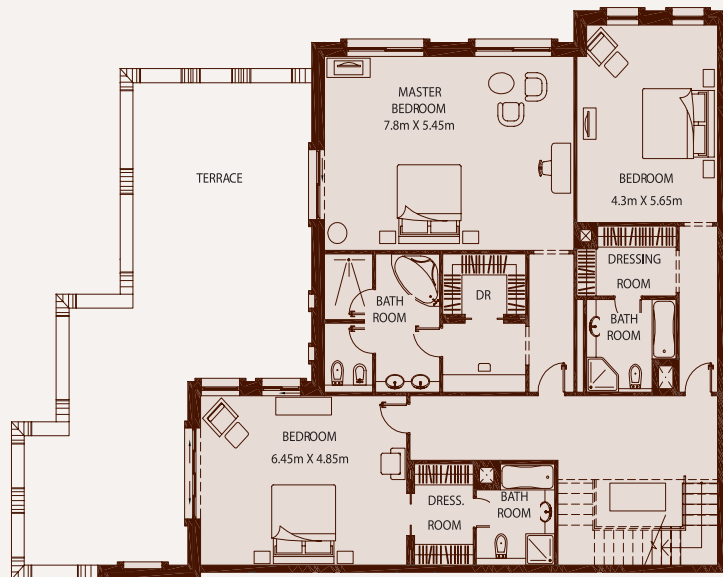
Upper Level

Penthouses - PH301 - Approximate Areas			
Lower Level	Unit	425.52m ²	4,580ft ²
Lower Level	Balcony	421.25m ²	4,534ft ²
Upper Level	Unit	332.06m ²	3,574ft ²
Upper Level	Void	81.19m ²	874ft ²
Upper Level	Balcony	50.32m ²	542ft ²
Total		1,310.34m²	14,104ft²

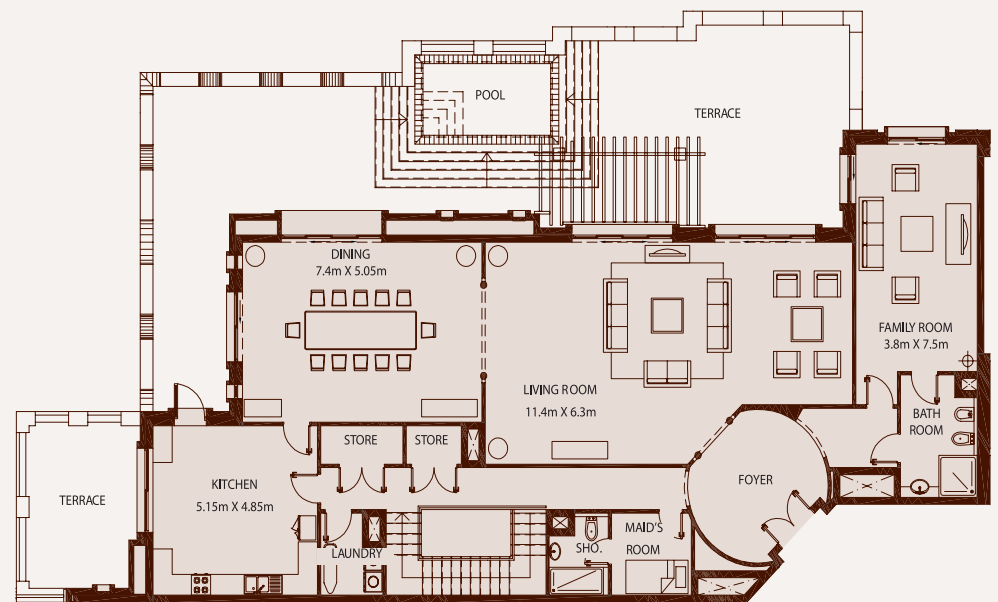


PENTHOUSES

PH1501, 1502

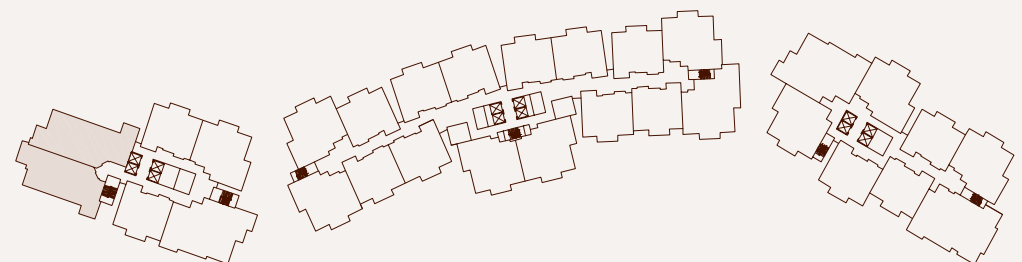


Lower Level



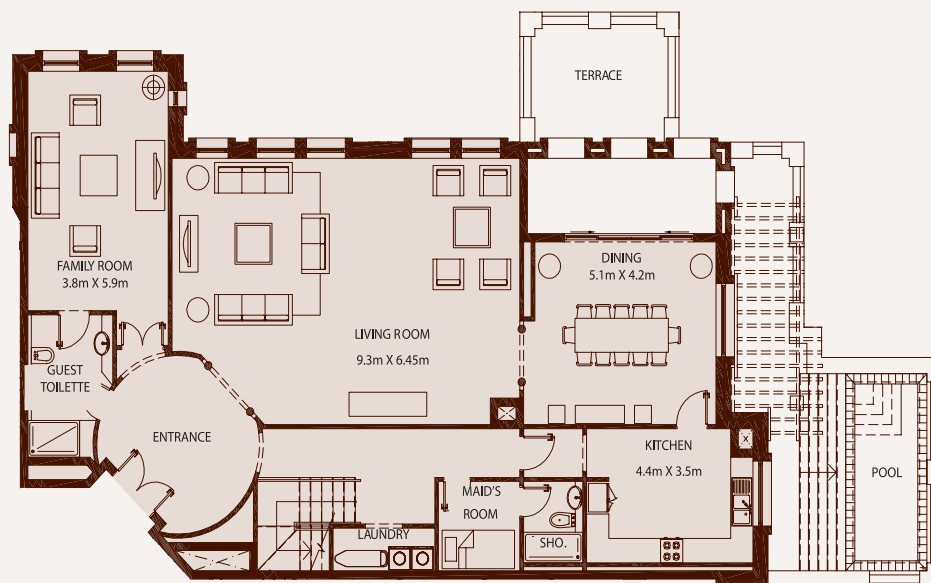
Upper Level

Penthouses - PH1501, 1502 - Approximate Areas			
Upper Level	Unit	264.05m ²	2,842ft ²
Upper Level	Terrace	148.50m ²	1,598ft ²
Lower Level	Unit	217.81m ²	2,344ft ²
Lower Level	Terrace	87.43m ²	941ft ²
Total		717.79m²	7,725ft²

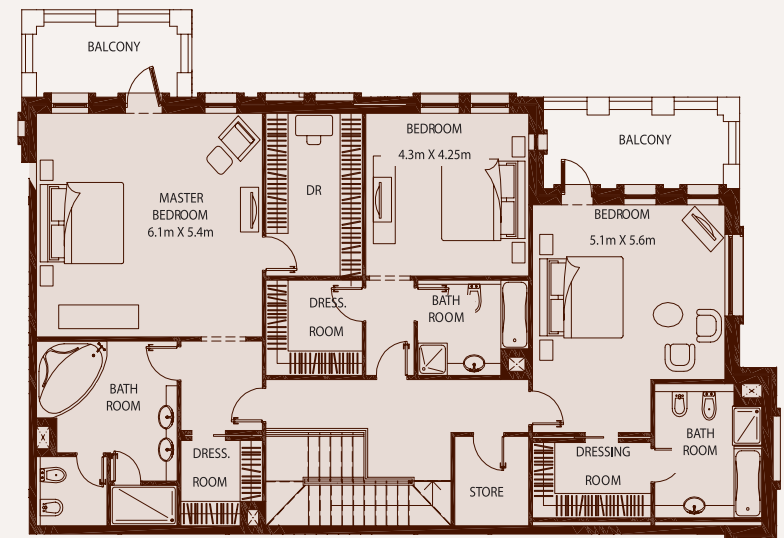


PENTHOUSES

PH1601, 1602

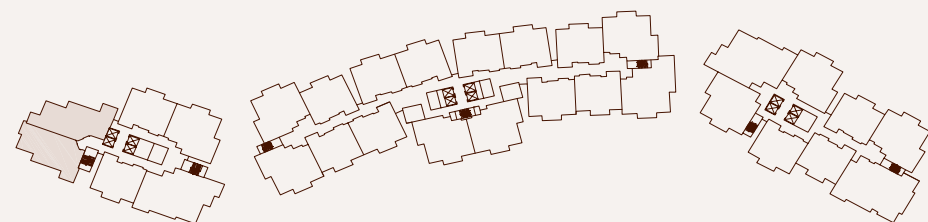


Lower Level



Upper Level

Penthouses - PH1601, 1602 - Approximate Areas			
Lower Level	Unit	197.33m ²	2,124ft ²
Lower Level	Terrace	64.34m ²	693ft ²
Upper Level	Unit	196.29m ²	2,113ft ²
Upper Level	Balcony	21.81m ²	235ft ²
Total		479.77m²	5,165ft²

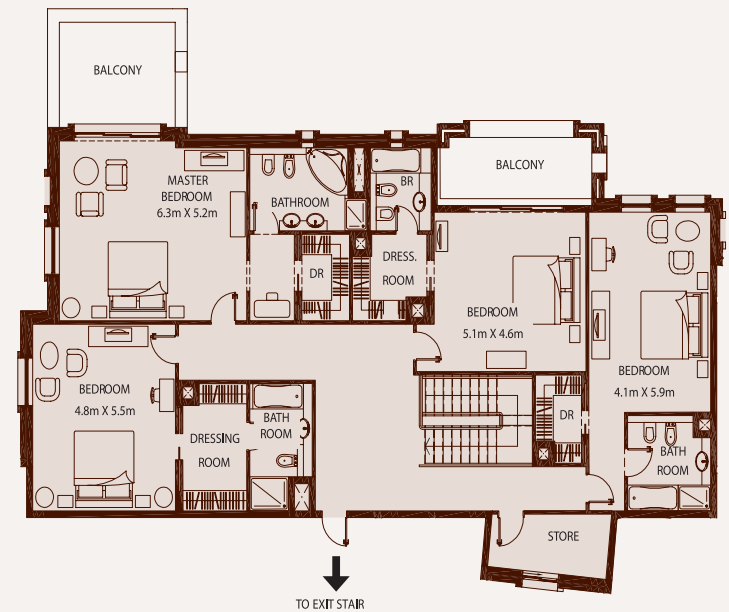


PENTHOUSES

PH202, 203

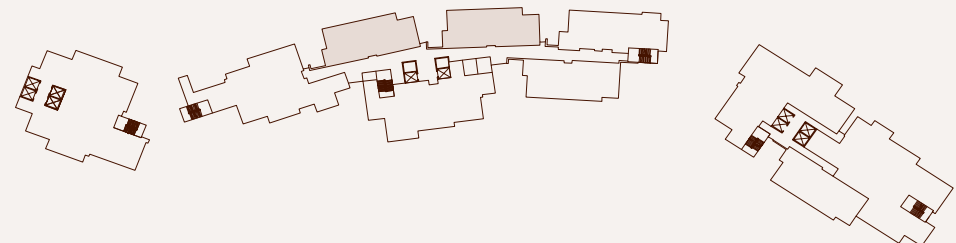


Lower Level



Upper Level

Penthouses - PH202,203 - Approximate Areas			
Lower Level	Unit	213.65m ²	2,300ft ²
Lower Level	Terrace	160.96m ²	1,732ft ²
Upper Level	Unit	247.33m ²	2,662ft ²
Upper Level	Balcony	29.89m ²	322ft ²
Total		651.83m²	7,016ft²



PENTHOUSES PH204

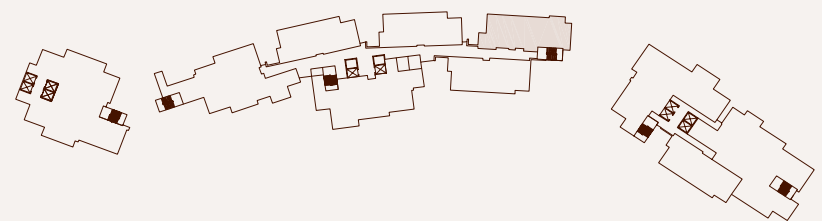


Lower Level

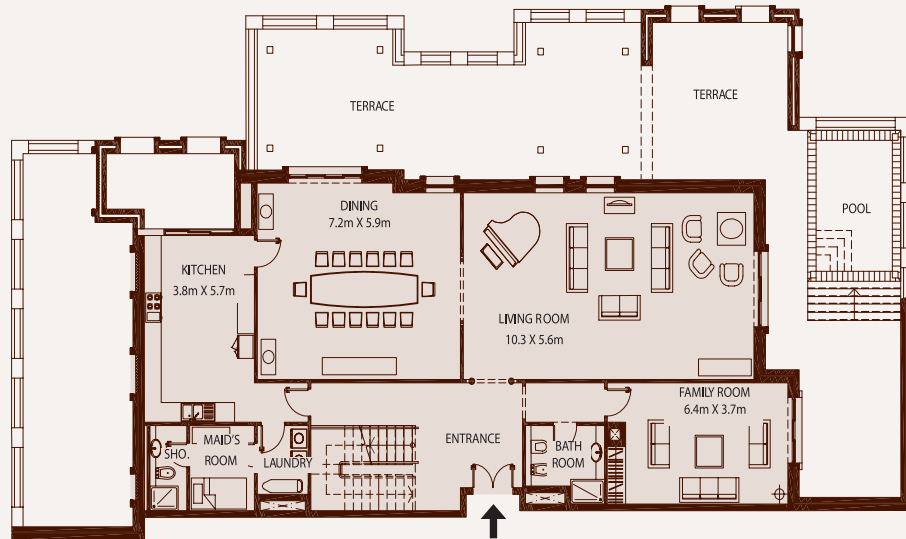


Upper Level

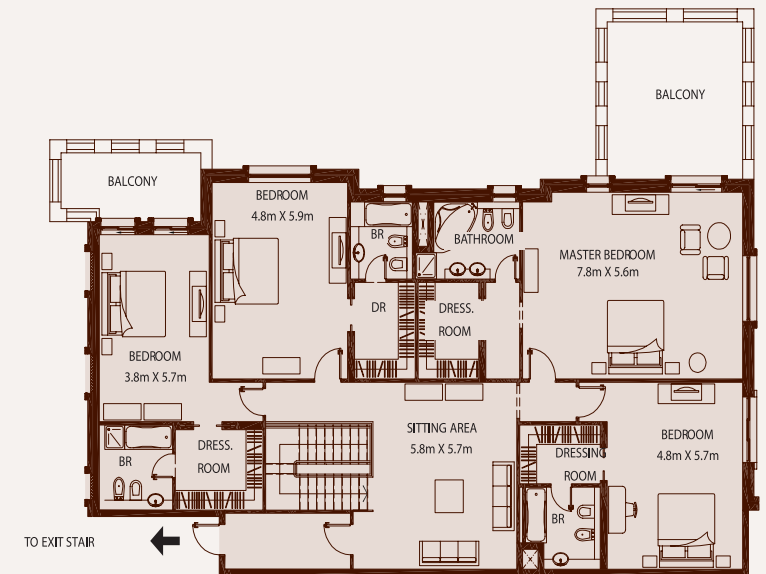
Penthouses - PH204 - Approximate Areas			
Lower Level	Unit	235.95m ²	2,540ft ²
Lower Level	Terrace	203.41m ²	2,190ft ²
Upper Level	Unit	244.08m ²	2,627ft ²
Upper Level	Balcony	21.33m ²	229ft ²
Total		704.77m²	7,586ft²



PENTHOUSES PH205



Lower Level



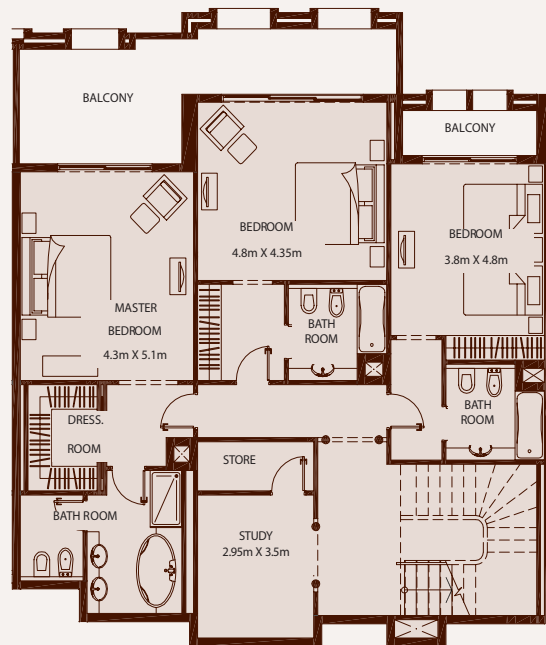
Upper Level

Penthouses - PH205 - Approximate Areas			
Lower Level	Unit	226.73m ²	2,440ft ²
Lower Level	Terrace	205.75m ²	2,215ft ²
Upper Level	Unit	268.59m ²	2,891ft ²
Upper Level	Balcony	42.76m ²	460ft ²
Total		743.83m²	8,006ft²

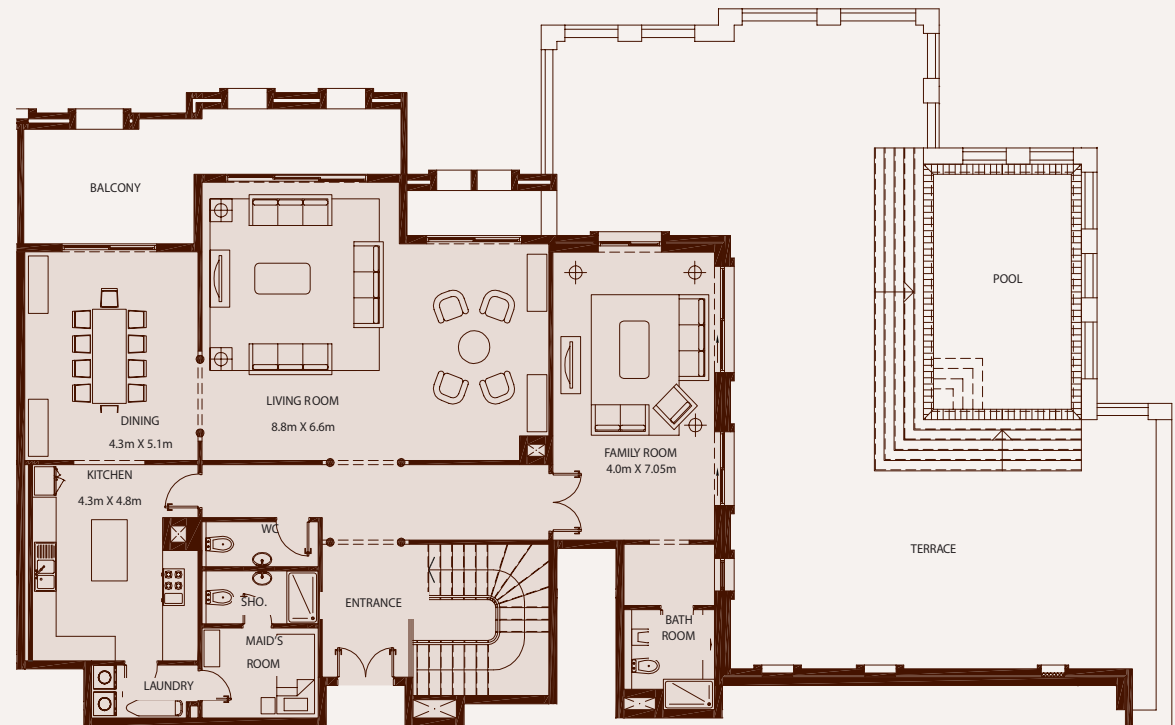


PENTHOUSES

PH21003, 21012



Lower Level



Upper Level

Penthouses - PH21003, 21012 - Approximate Areas			
Lower Level	Unit	161.39m ²	1,737ft ²
Lower Level	Balcony	30.36m ²	327ft ²
Upper Level	Unit	207.27m ²	2,231ft ²
Upper Level	Terrace	204.95m ²	2,206ft ²
Total		603.97m²	6,501ft²

