

BECAUSE YOU LOVE BEING DOWNTOWN.

Remember...
we are the real centre of now.

To keep up with the lively Florentine buzz, we've strategically positioned I Love Florence Tower in the centre of Dubai's urban hub; at Downtown Dubai, in Business Bay overlooking the majestic Dubai Canal. At your doorstep are the hottest locales for entertainment, fine dining and leisure.

Located in the luxury 5-star hotel corridor - JW Marriott Marquis, The Westin Dubai, The St.Regis Dubai, W Dubai.

- 0 MINUTES**
to Dubai Canal
- 2 MINUTES**
to Dubai Mall
- 5 MINUTES**
to Burj Khalifa
- 10 MINUTES**
to City Walk
- 10 MINUTES**
to Meydan Racecourse.



FLOOR PLANS FLOOR 1

FLOOR 1 | UNITS 1 & 5

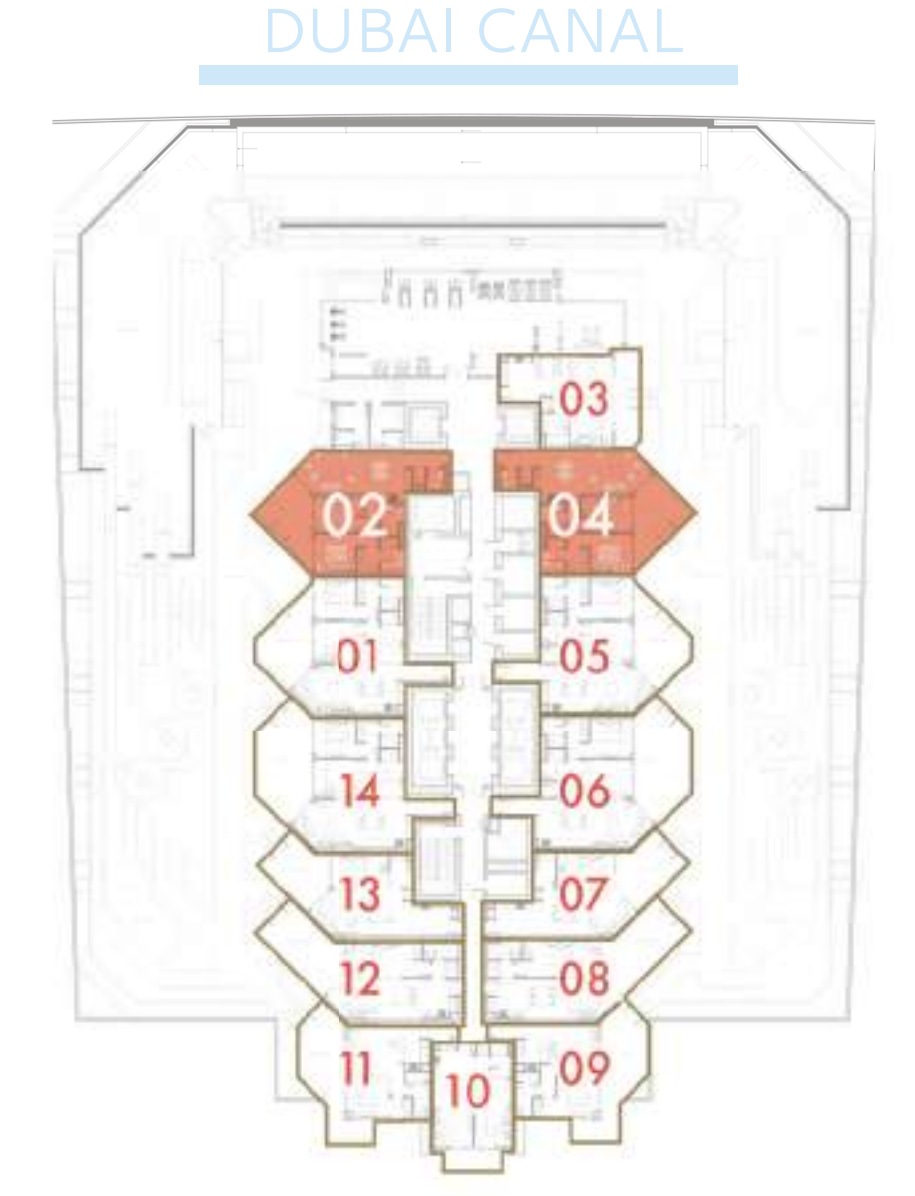


2 BEDROOM

Disclaimer: All pictures, plans, layouts, information, data and details included in this brochure are indicative only and may change at any time up to the final 'as built' status in accordance with final designs of the project, regulatory approvals and planning permissions. All accessories and interior finishes such as wallpaper, chandeliers, furniture, electronics, white goods, curtains, hard and soft landscaping, pavements, features, gym, swimming pool(s) and other elements displayed in the brochure, or within the show apartment or between the plot boundary and the unit, are not part of the unit and are shown for illustrative purposes only.

UNIT AREA	87.08 sq.m 937.33 sq.ft
BALCONY AREA	23.56 sq.m 253.60 sq.ft
TOTAL AREA	110.64 sq.m 1,190.93 sq.ft

FLOOR 1 | UNITS 2 & 4



2 BEDROOM

Disclaimer: All pictures, plans, layouts, information, data and details included in this brochure are indicative only and may change at any time up to the final 'as built' status in accordance with final designs of the project, regulatory approvals and planning permissions. All accessories and interior finishes such as wallpaper, chandeliers, furniture, electronics, white goods, curtains, hard and soft landscaping, pavements, features, gym, swimming pool(s) and other elements displayed in the brochure, or within the show apartment or between the plot boundary and the unit, are not part of the unit and are shown for illustrative purposes only.

UNIT AREA	84.22 sq.m 906.54 sq.ft
BALCONY AREA	19.84 sq.m 213.56 sq.ft
TOTAL AREA	104.06 sq.m 1,120.10 sq.ft

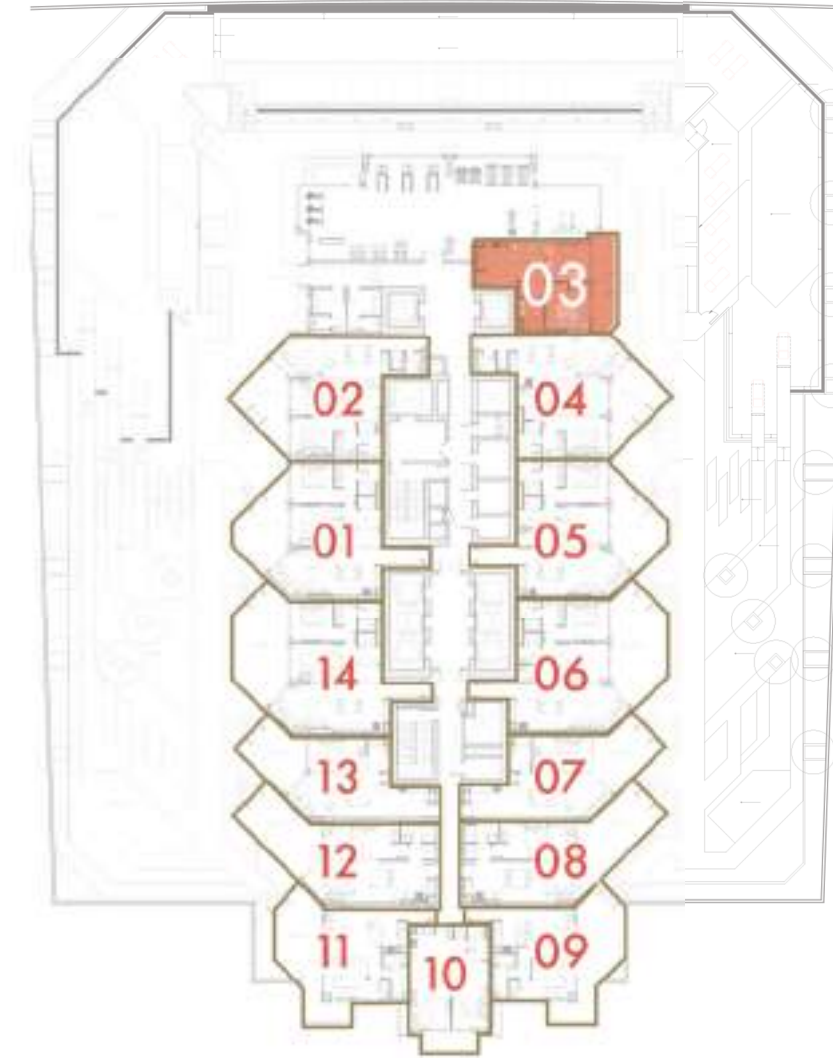
FLOOR 1 | UNIT 3



1 BEDROOM

Disclaimer: All pictures, plans, layouts, information, data and details included in this brochure are indicative only and may change at any time up to the final 'as built' status in accordance with final designs of the project, regulatory approvals and planning permissions. All accessories and interior finishes such as wallpaper, chandeliers, furniture, electronics, white goods, curtains, hard and soft landscaping, pavements, features, gym, swimming pool(s) and other elements displayed in the brochure, or within the show apartment or between the plot boundary and the unit, are not part of the unit and are shown for illustrative purposes only.

DUBAI CANAL



UNIT AREA	53.24 sq.m 573.08 sq.ft
BALCONY AREA	15.82 sq.m 170.29 sq.ft
TOTAL AREA	69.06 sq.m 743.36 sq.ft

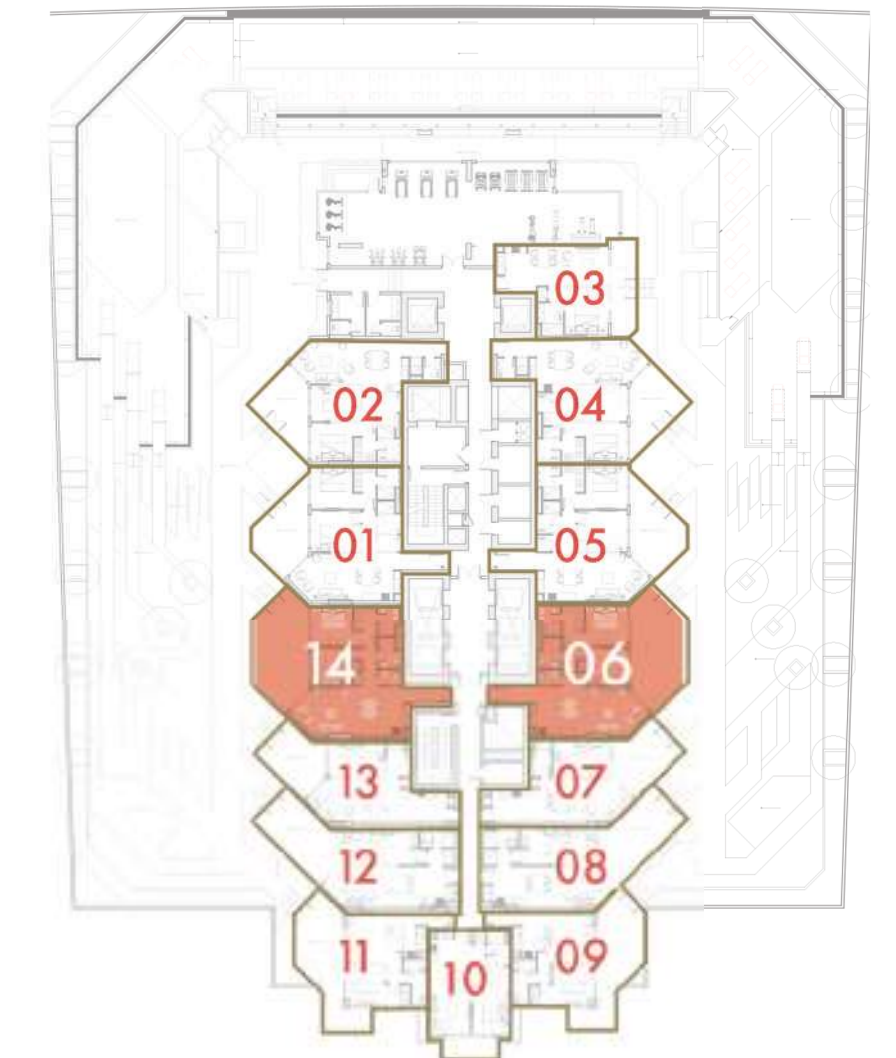
FLOOR 1 | UNITS 6 & 14



2 BEDROOM

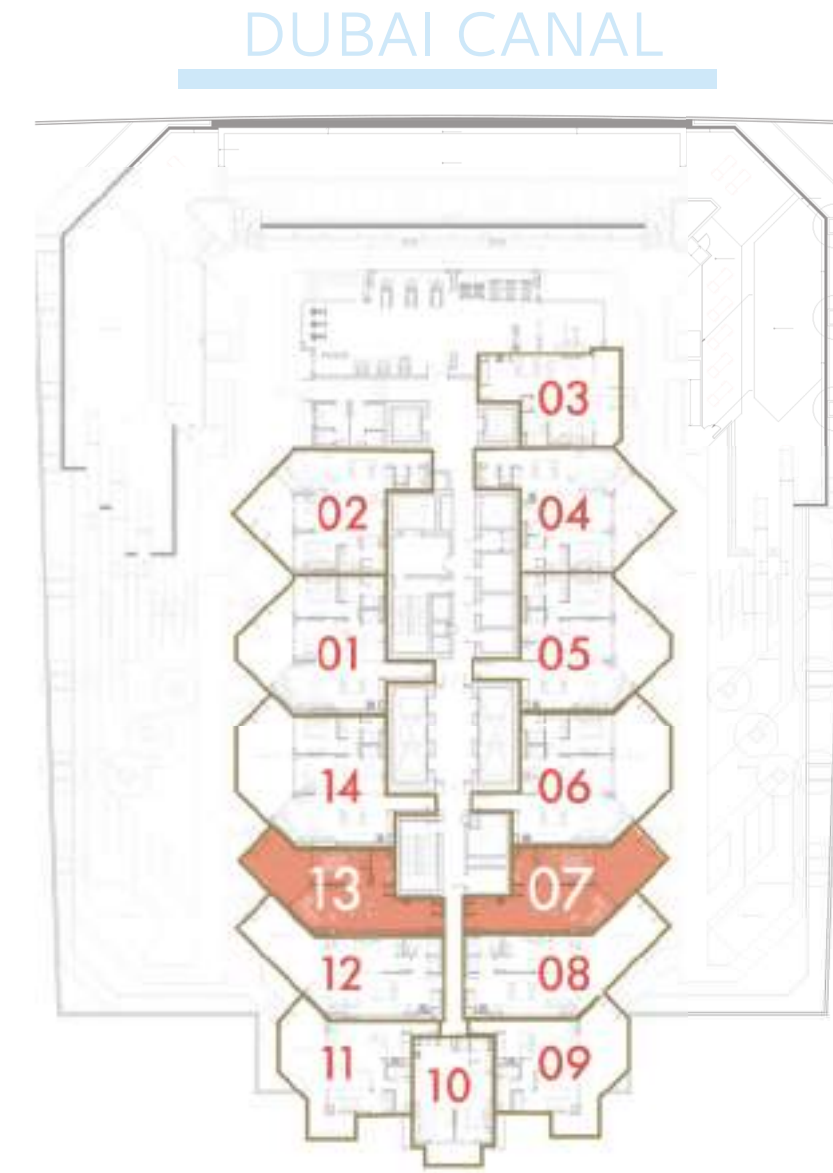
Disclaimer: All pictures, plans, layouts, information, data and details included in this brochure are indicative only and may change at any time up to the final 'as built' status in accordance with final designs of the project, regulatory approvals and planning permissions. All accessories and interior finishes such as wallpaper, chandeliers, furniture, electronics, white goods, curtains, hard and soft landscaping, pavements, features, gym, swimming pool(s) and other elements displayed in the brochure, or within the show apartment or between the plot boundary and the unit, are not part of the unit and are shown for illustrative purposes only.

DUBAI CANAL



UNIT AREA	86.71 sq.m 933.35 sq.ft
BALCONY AREA	35.31 sq.m 380.08 sq.ft
TOTAL AREA	122.02 sq.m 1,313.42 sq.ft

FLOOR 1 | UNITS 7 & 13

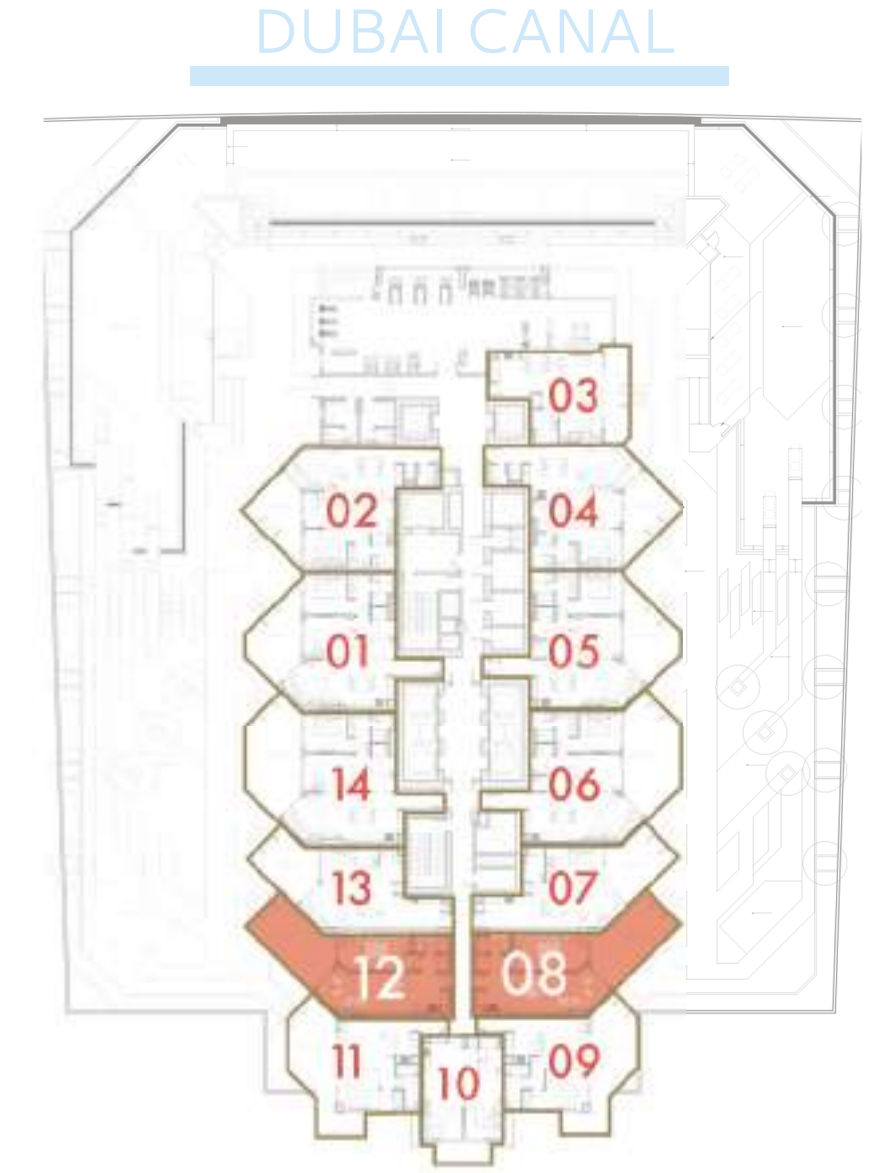


1 BEDROOM

Disclaimer: All pictures, plans, layouts, information, data and details included in this brochure are indicative only and may change at any time up to the final 'as built' status in accordance with final designs of the project, regulatory approvals and planning permissions. All accessories and interior finishes such as wallpaper, chandeliers, furniture, electronics, white goods, curtains, hard and soft landscaping, pavements, features, gym, swimming pool(s) and other elements displayed in the brochure, or within the show apartment or between the plot boundary and the unit, are not part of the unit and are shown for illustrative purposes only.

UNIT AREA	57.71 sq.m 621.19 sq.ft
BALCONY AREA	21.36 sq.m 229.92 sq.ft
TOTAL AREA	79.07 sq.m 851.11 sq.ft

FLOOR 1 | UNITS 8 & 12



1 BEDROOM

Disclaimer: All pictures, plans, layouts, information, data and details included in this brochure are indicative only and may change at any time up to the final 'as built' status in accordance with final designs of the project, regulatory approvals and planning permissions. All accessories and interior finishes such as wallpaper, chandeliers, furniture, electronics, white goods, curtains, hard and soft landscaping, pavements, features, gym, swimming pool(s) and other elements displayed in the brochure, or within the show apartment or between the plot boundary and the unit, are not part of the unit and are shown for illustrative purposes only.

UNIT AREA	60.20 sq.m 647.99 sq.ft
BALCONY AREA	27.81 sq.m 229.35 sq.ft
TOTAL AREA	88.01 sq.m 947.34 sq.ft

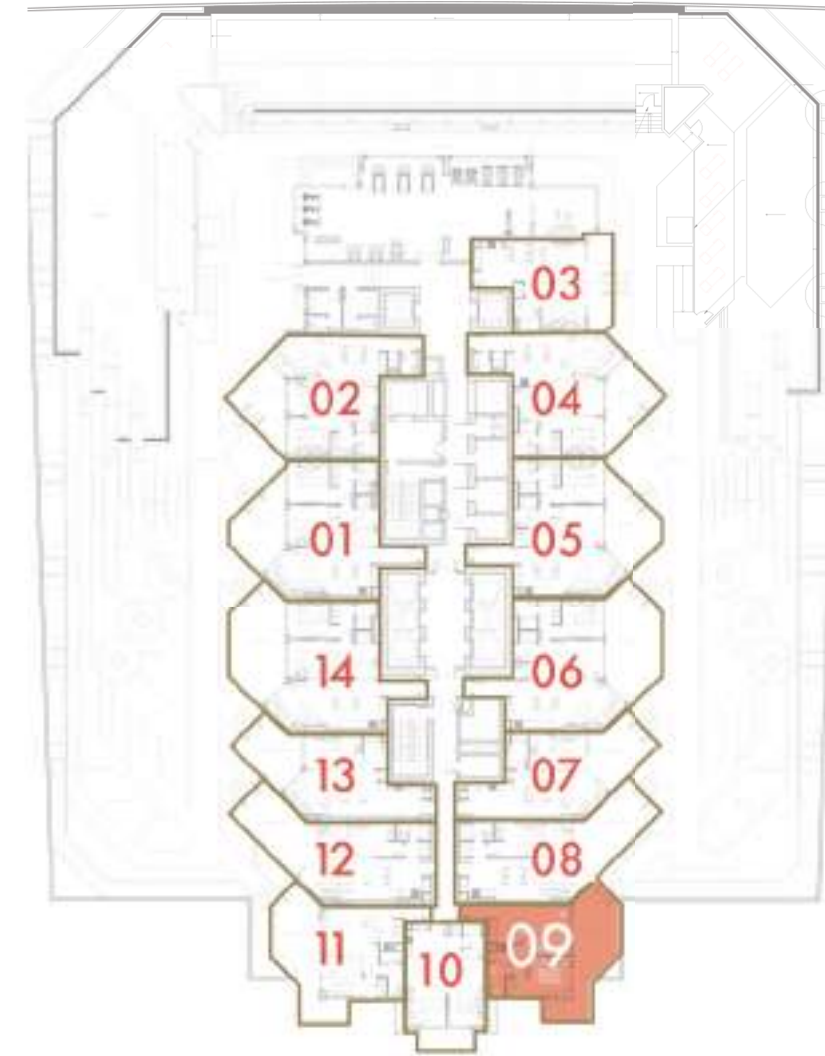
FLOOR 1 | UNIT 9



1 BEDROOM

Disclaimer: All pictures, plans, layouts, information, data and details included in this brochure are indicative only and may change at any time up to the final 'as built' status in accordance with final designs of the project, regulatory approvals and planning permissions. All accessories and interior finishes such as wallpaper, chandeliers, furniture, electronics, white goods, curtains, hard and soft landscaping, pavements, features, gym, swimming pool(s) and other elements displayed in the brochure, or within the show apartment or between the plot boundary and the unit, are not part of the unit and are shown for illustrative purposes only.

DUBAI CANAL



UNIT AREA	51.76 sq.m 557.14 sq.ft
BALCONY AREA	33.74 sq.m 363.18 sq.ft
TOTAL AREA	85.50 sq.m 920.32 sq.ft

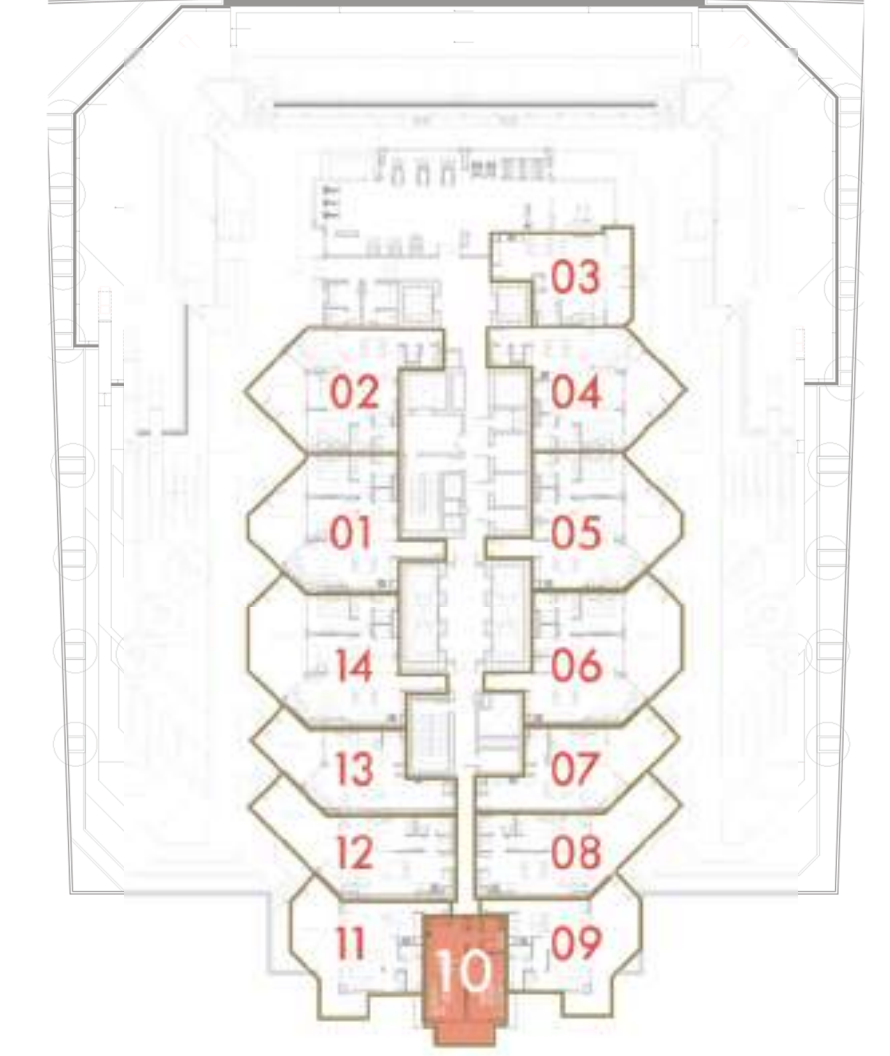
FLOOR 1 | UNIT 10



1 BEDROOM

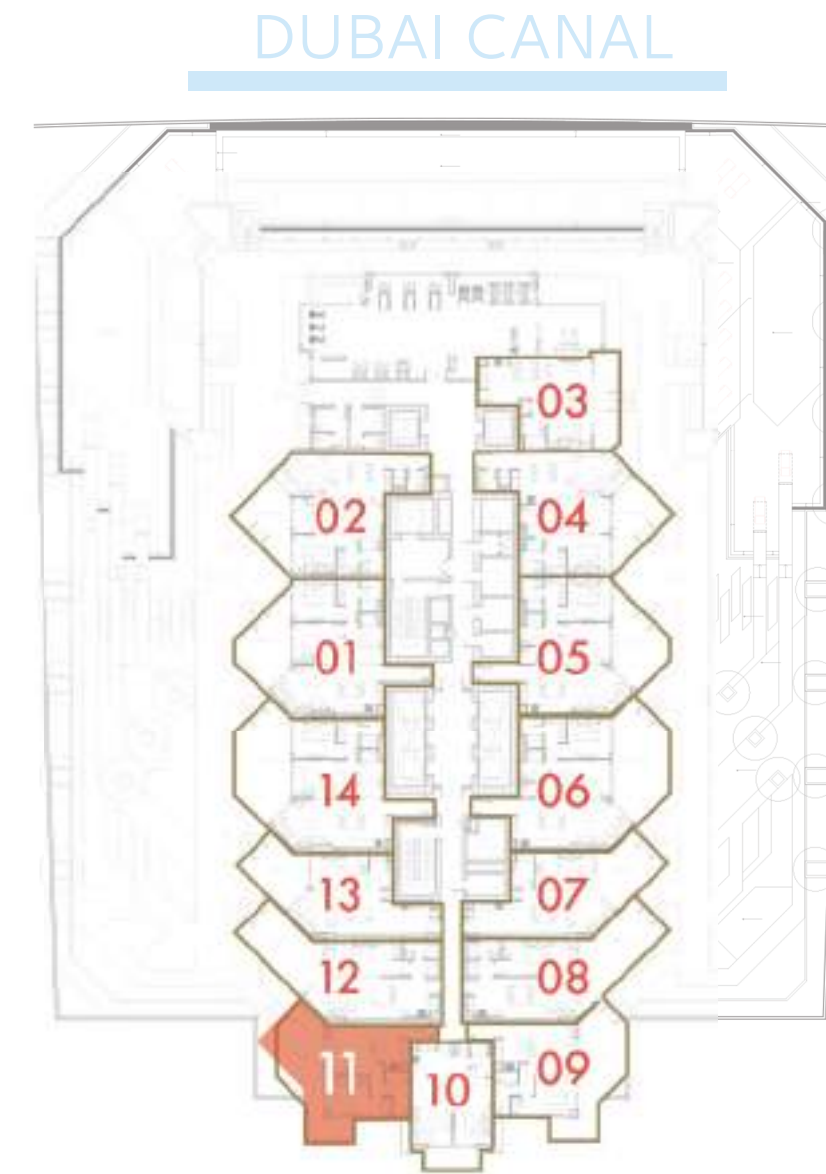
Disclaimer: All pictures, plans, layouts, information, data and details included in this brochure are indicative only and may change at any time up to the final 'as built' status in accordance with final designs of the project, regulatory approvals and planning permissions. All accessories and interior finishes such as wallpaper, chandeliers, furniture, electronics, white goods, curtains, hard and soft landscaping, pavements, features, gym, swimming pool(s) and other elements displayed in the brochure, or within the show apartment or between the plot boundary and the unit, are not part of the unit and are shown for illustrative purposes only.

DUBAI CANAL



UNIT AREA	52.32 sq.m 563.17 sq.ft
BALCONY AREA	8.31 sq.m 89.45 sq.ft
TOTAL AREA	60.63 sq.m 652.62 sq.ft

FLOOR 1 | UNIT 11



DUBAI CANAL

FLOOR PLANS FLOOR 2 - 14

1 BEDROOM

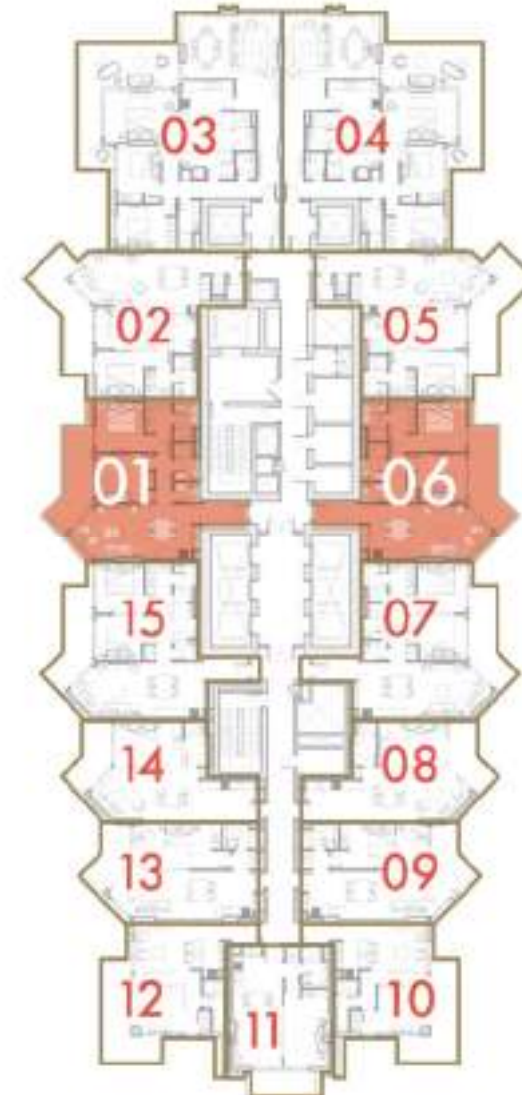
Disclaimer: All pictures, plans, layouts, information, data and details included in this brochure are indicative only and may change at any time up to the final 'as built' status in accordance with final designs of the project, regulatory approvals and planning permissions. All accessories and interior finishes such as wallpaper, chandeliers, furniture, electronics, white goods, curtains, hard and soft landscaping, pavements, features, gym, swimming pool(s) and other elements displayed in the brochure, or within the show apartment or between the plot boundary and the unit, are not part of the unit and are shown for illustrative purposes only.

UNIT AREA	51.73 sq.m 556.82 sq.ft
BALCONY AREA	34.36 sq.m 369.85 sq.ft
TOTAL AREA	86.09 sq.m 926.67 sq.ft

FLOOR 2-14 | UNITS 1 & 6



DUBAI CANAL



2 BEDROOM

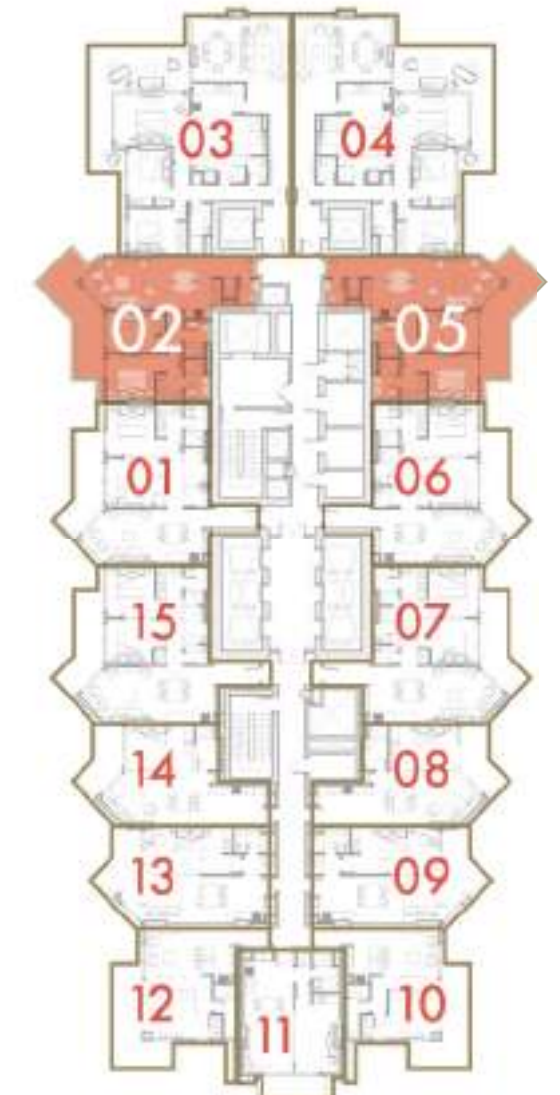
Disclaimer: All pictures, plans, layouts, information, data and details included in this brochure are indicative only and may change at any time up to the final 'as built' status in accordance with final designs of the project, regulatory approvals and planning permissions. All accessories and interior finishes such as wallpaper, chandeliers, furniture, electronics, white goods, curtains, hard and soft landscaping, pavements, features, gym, swimming pool(s) and other elements displayed in the brochure, or within the show apartment or between the plot boundary and the unit, are not part of the unit and are shown for illustrative purposes only.

UNIT AREA	87.12 sq.m 937.76 sq.ft
BALCONY AREA	13.73 sq.m 147.79 sq.ft
TOTAL AREA	100.85 sq.m 1,085.55 sq.ft

FLOOR 2-14 | UNITS 2 & 5



DUBAI CANAL

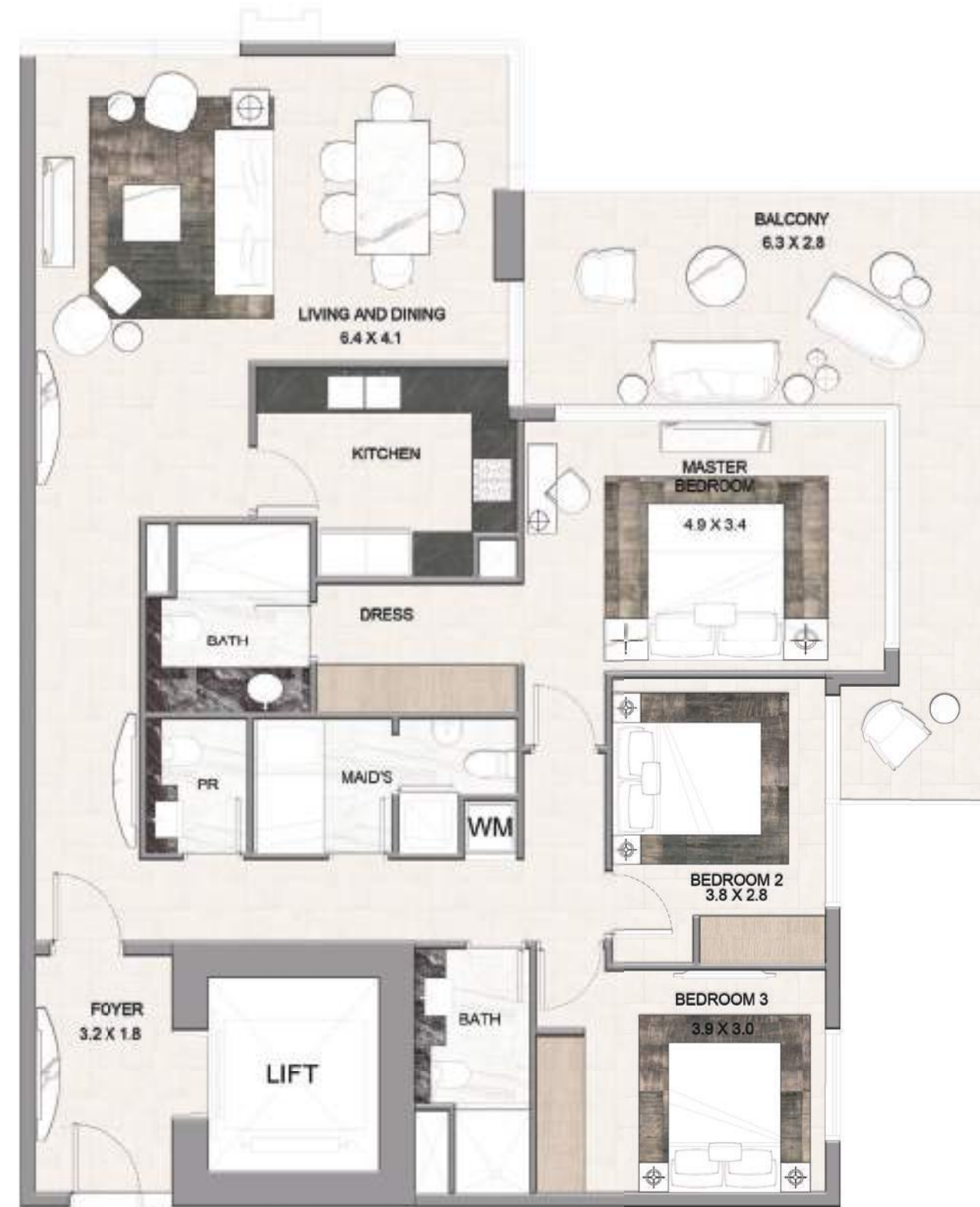


2 BEDROOM

Disclaimer: All pictures, plans, layouts, information, data and details included in this brochure are indicative only and may change at any time up to the final 'as built' status in accordance with final designs of the project, regulatory approvals and planning permissions. All accessories and interior finishes such as wallpaper, chandeliers, furniture, electronics, white goods, curtains, hard and soft landscaping, pavements, features, gym, swimming pool(s) and other elements displayed in the brochure, or within the show apartment or between the plot boundary and the unit, are not part of the unit and are shown for illustrative purposes only.

UNIT AREA	83.90 sq.m 903.10 sq.ft
BALCONY AREA	18.87 sq.m 203.12 sq.ft
TOTAL AREA	102.77 sq.m 1,106.22 sq.ft

FLOOR 2-14 | UNITS 3 & 4



3 BEDROOM

Disclaimer: All pictures, plans, layouts, information, data and details included in this brochure are indicative only and may change at any time up to the final 'as built' status in accordance with final designs of the project, regulatory approvals and planning permissions. All accessories and interior finishes such as wallpaper, chandeliers, furniture, electronics, white goods, curtains, hard and soft landscaping, pavements, features, gym, swimming pool(s) and other elements displayed in the brochure, or within the show apartment or between the plot boundary and the unit, are not part of the unit and are shown for illustrative purposes only.

DUBAI CANAL



UNIT AREA	142.06 sq.m 1,529.13 sq.ft
BALCONY AREA	31.00 sq.m 333.68 sq.ft
TOTAL AREA	173.06 sq.m 1,862.82 sq.ft

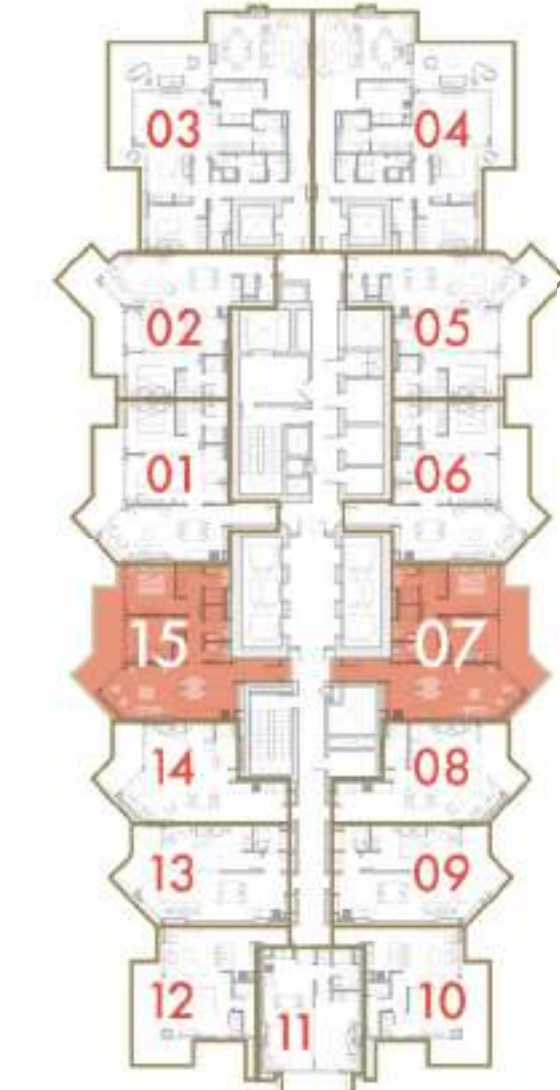
FLOOR 2-14 | UNITS 7 & 15



2 BEDROOM

Disclaimer: All pictures, plans, layouts, information, data and details included in this brochure are indicative only and may change at any time up to the final 'as built' status in accordance with final designs of the project, regulatory approvals and planning permissions. All accessories and interior finishes such as wallpaper, chandeliers, furniture, electronics, white goods, curtains, hard and soft landscaping, pavements, features, gym, swimming pool(s) and other elements displayed in the brochure, or within the show apartment or between the plot boundary and the unit, are not part of the unit and are shown for illustrative purposes only.

DUBAI CANAL



UNIT AREA	86.69 sq.m 933.13 sq.ft
BALCONY AREA	13.14 sq.m 141.44 sq.ft
TOTAL AREA	99.83 sq.m 1,074.57 sq.ft

FLOOR 2-14 | UNITS 8 & 14



DUBAI CANAL



UNIT AREA	57.63 sq.m 620.33 sq.ft
BALCONY AREA	9.65 sq.m 103.87 sq.ft
TOTAL AREA	67.28 sq.m 724.20 sq.ft

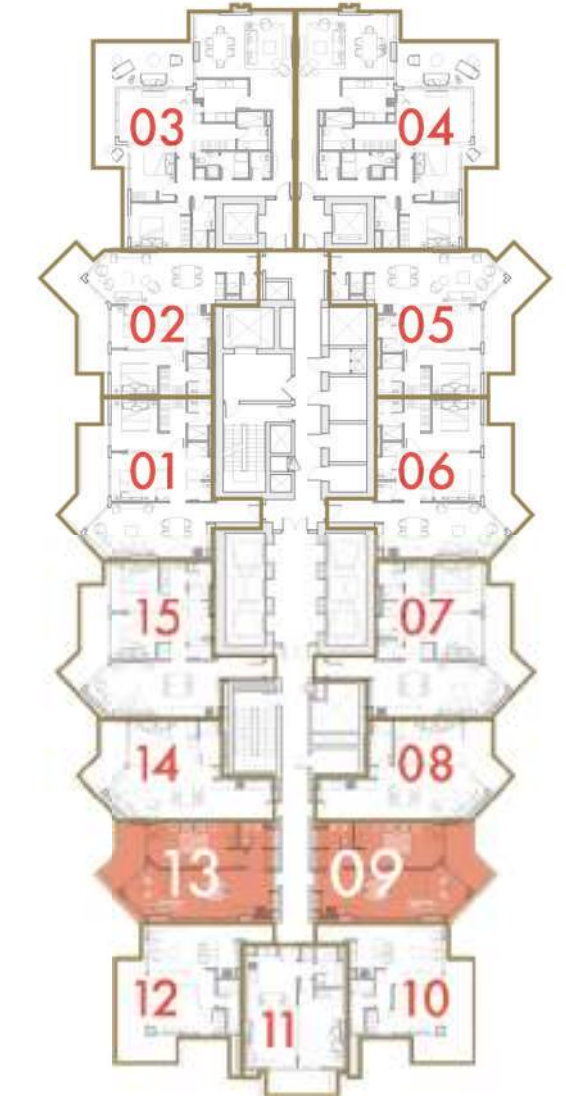
1 BEDROOM

Disclaimer: All pictures, plans, layouts, information, data and details included in this brochure are indicative only and may change at any time up to the final 'as built' status in accordance with final designs of the project, regulatory approvals and planning permissions. All accessories and interior finishes such as wallpaper, chandeliers, furniture, electronics, white goods, curtains, hard and soft landscaping, pavements, features, gym, swimming pool(s) and other elements displayed in the brochure, or within the show apartment or between the plot boundary and the unit, are not part of the unit and are shown for illustrative purposes only.

FLOOR 2-14 | UNITS 9 & 13



DUBAI CANAL



UNIT AREA	60.39 sq.m 650.04 sq.ft
BALCONY AREA	9.16 sq.m 98.60 sq.ft
TOTAL AREA	69.55 sq.m 748.64 sq.ft

1 BEDROOM

Disclaimer: All pictures, plans, layouts, information, data and details included in this brochure are indicative only and may change at any time up to the final 'as built' status in accordance with final designs of the project, regulatory approvals and planning permissions. All accessories and interior finishes such as wallpaper, chandeliers, furniture, electronics, white goods, curtains, hard and soft landscaping, pavements, features, gym, swimming pool(s) and other elements displayed in the brochure, or within the show apartment or between the plot boundary and the unit, are not part of the unit and are shown for illustrative purposes only.

FLOOR 2-14 | UNITS 10 & 12



1 BEDROOM

Disclaimer: All pictures, plans, layouts, information, data and details included in this brochure are indicative only and may change at any time up to the final 'as built' status in accordance with final designs of the project, regulatory approvals and planning permissions. All accessories and interior finishes such as wallpaper, chandeliers, furniture, electronics, white goods, curtains, hard and soft landscaping, pavements, features, gym, swimming pool(s) and other elements displayed in the brochure, or within the show apartment or between the plot boundary and the unit, are not part of the unit and are shown for illustrative purposes only.

DUBAI CANAL



UNIT AREA	52.17 sq.m 561.56 sq.ft
BALCONY AREA	18.22 sq.m 196.12 sq.ft
TOTAL AREA	70.39 sq.m 757.68 sq.ft

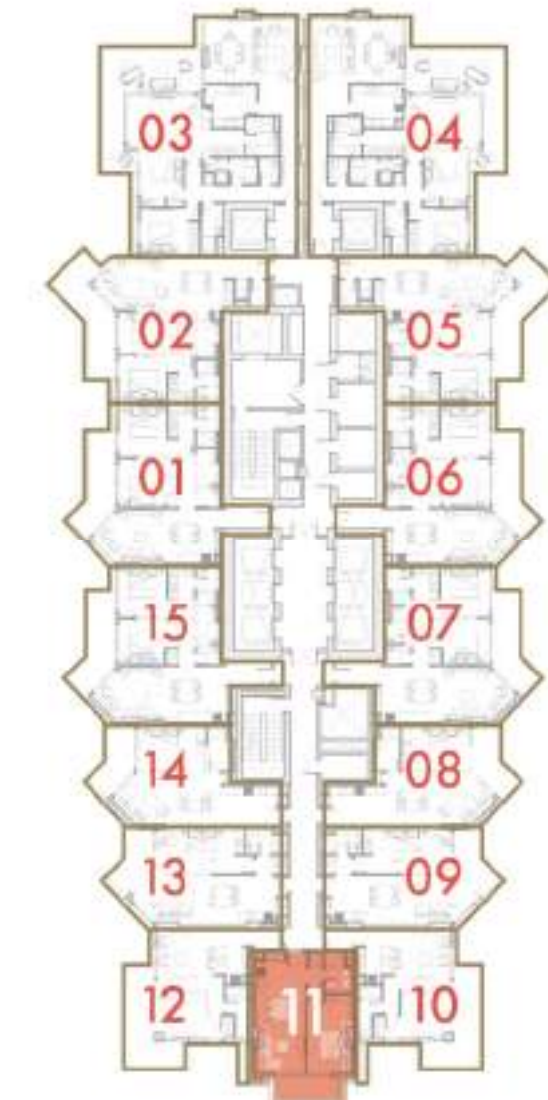
FLOOR 2-14 | UNIT 11



1 BEDROOM

Disclaimer: All pictures, plans, layouts, information, data and details included in this brochure are indicative only and may change at any time up to the final 'as built' status in accordance with final designs of the project, regulatory approvals and planning permissions. All accessories and interior finishes such as wallpaper, chandeliers, furniture, electronics, white goods, curtains, hard and soft landscaping, pavements, features, gym, swimming pool(s) and other elements displayed in the brochure, or within the show apartment or between the plot boundary and the unit, are not part of the unit and are shown for illustrative purposes only.

DUBAI CANAL

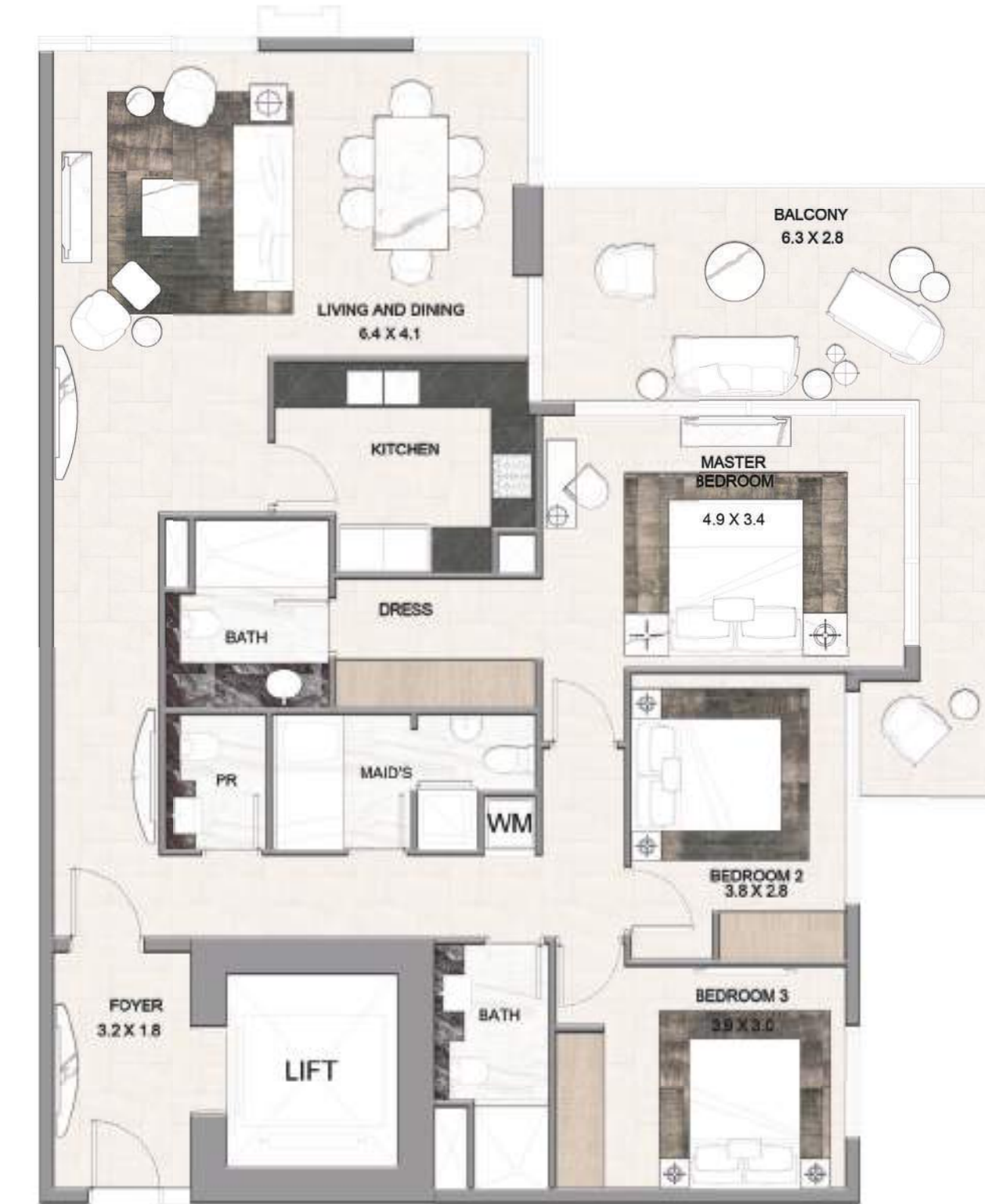


UNIT AREA	52.30 sq.m 562.96 sq.ft
BALCONY AREA	8.30 sq.m 89.34 sq.ft
TOTAL AREA	60.60 sq.m 652.30 sq.ft

FLOOR PLANS

FLOOR 15

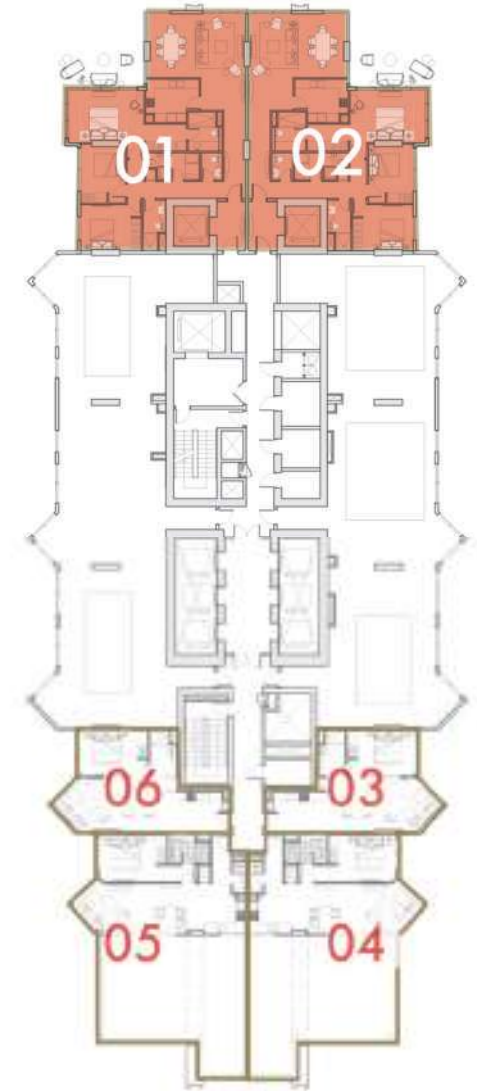
FLOOR 15 | UNITS 1&2



3 BEDROOM

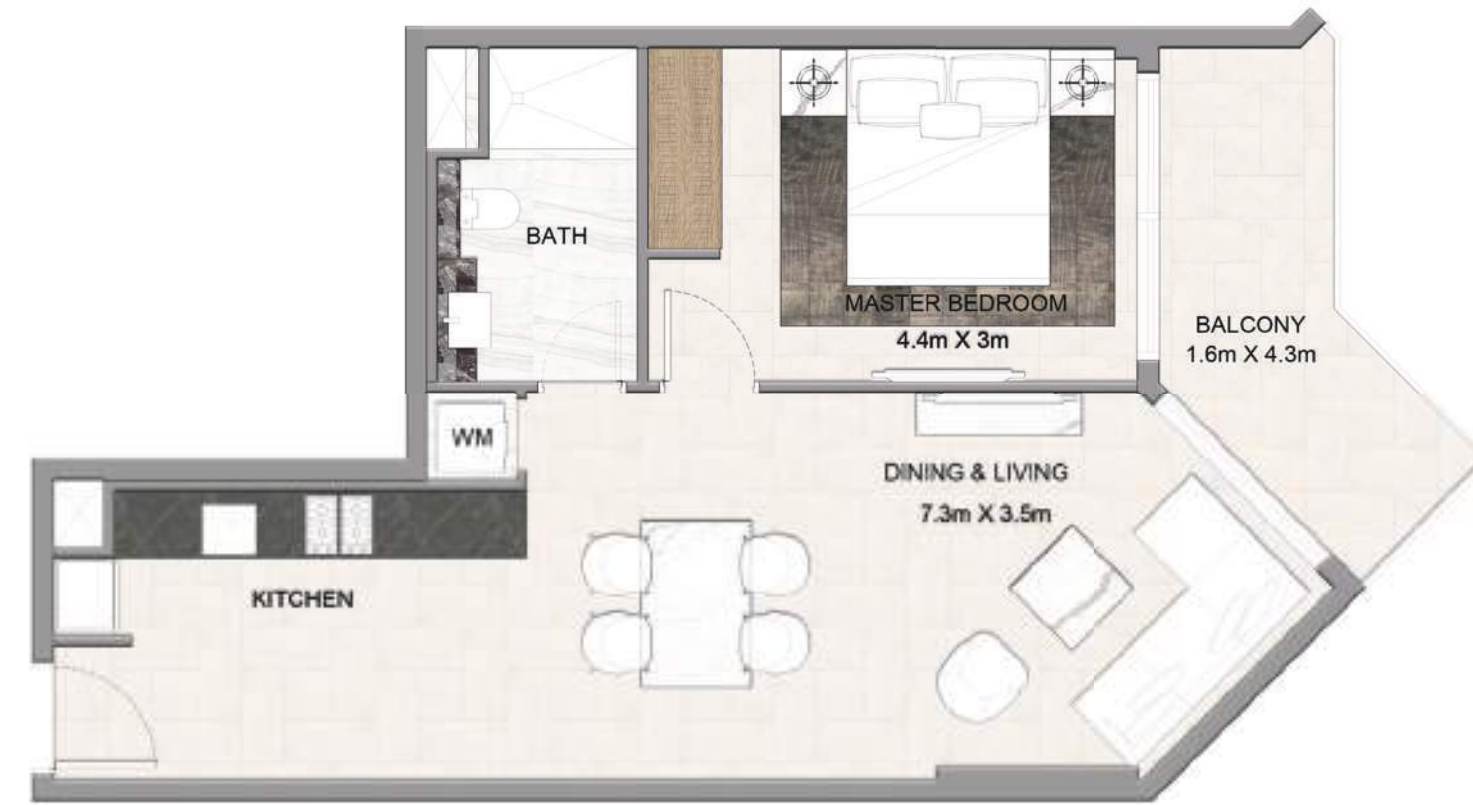
Disclaimer: All pictures, plans, layouts, information, data and details included in this brochure are indicative only and may change at any time up to the final 'as built' status in accordance with final designs of the project, regulatory approvals and planning permissions. All accessories and interior finishes such as wallpaper, chandeliers, furniture, electronics, white goods, curtains, hard and soft landscaping, pavements, features, gym, swimming pool(s) and other elements displayed in the brochure, or within the show apartment or between the plot boundary and the unit, are not part of the unit and are shown for illustrative purposes only.

DUBAI CANAL



UNIT AREA	142.10 sq.m 1,529.56 sq.ft
BALCONY AREA	31.00 sq.m 333.68 sq.ft
TOTAL AREA	173.10 sq.m 1,863.25 sq.ft

FLOOR 15 | UNITS 3&6



1 BEDROOM

Disclaimer: All pictures, plans, layouts, information, data and details included in this brochure are indicative only and may change at any time up to the final 'as built' status in accordance with final designs of the project, regulatory approvals and planning permissions. All accessories and interior finishes such as wallpaper, chandeliers, furniture, electronics, white goods, curtains, hard and soft landscaping, pavements, features, gym, swimming pool(s) and other elements displayed in the brochure, or within the show apartment or between the plot boundary and the unit, are not part of the unit and are shown for illustrative purposes only.

DUBAI CANAL



UNIT AREA	57.85 sq.m 622.70 sq.ft
BALCONY AREA	9.53 sq.m 102.58 sq.ft
TOTAL AREA	67.38 sq.m 725.28 sq.ft

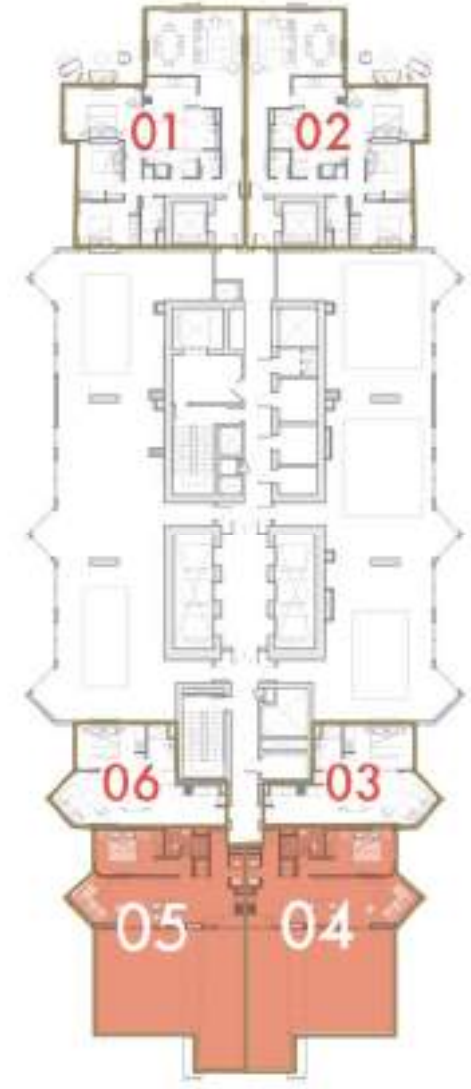
FLOOR 15 | UNITS 4&5



1 BEDROOM

Disclaimer: All pictures, plans, layouts, information, data and details included in this brochure are indicative only and may change at any time up to the final 'as built' status in accordance with final designs of the project, regulatory approvals and planning permissions. All accessories and interior finishes such as wallpaper, chandeliers, furniture, electronics, white goods, curtains, hard and soft landscaping, pavements, features, gym, swimming pool(s) and other elements displayed in the brochure, or within the show apartment or between the plot boundary and the unit, are not part of the unit and are shown for illustrative purposes only.

DUBAI CANAL



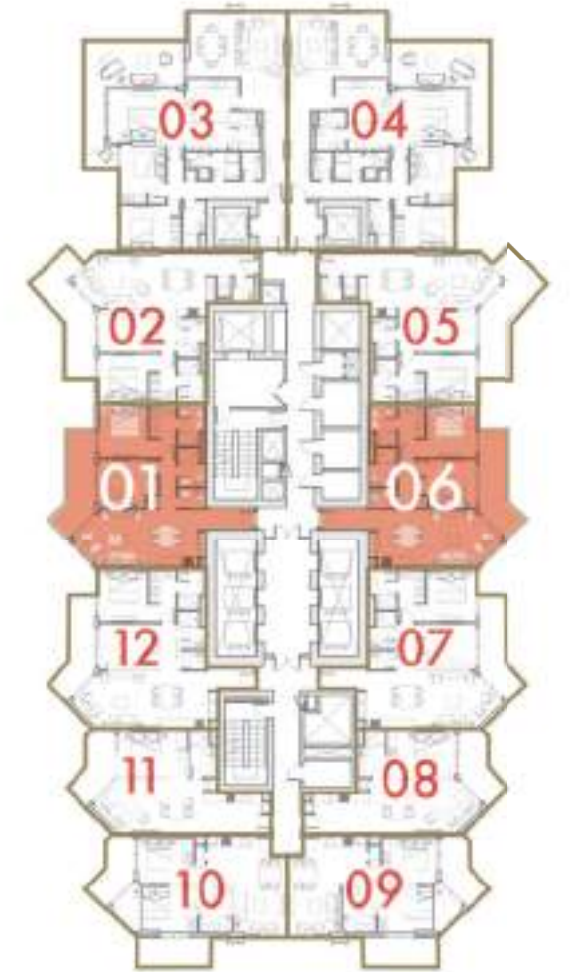
UNIT AREA	65.43 sq.m 704.29 sq.ft
BALCONY AREA	84.86 sq.m 913.43 sq.ft
TOTAL AREA	150.29 sq.m 1,617.72 sq.ft

FLOOR 16-23 | UNITS 1&6

FLOOR PLANS FLOOR 16 - 23



DUBAI CANAL



2 BEDROOM

Disclaimer: All pictures, plans, layouts, information, data and details included in this brochure are indicative only and may change at any time up to the final 'as built' status in accordance with final designs of the project, regulatory approvals and planning permissions. All accessories and interior finishes such as wallpaper, chandeliers, furniture, electronics, white goods, curtains, hard and soft landscaping, pavements, features, gym, swimming pool(s) and other elements displayed in the brochure, or within the show apartment or between the plot boundary and the unit, are not part of the unit and are shown for illustrative purposes only.

UNIT AREA	87.11 sq.m 937.65 sq.ft
BALCONY AREA	13.73 sq.m 147.79 sq.ft
TOTAL AREA	100.84 sq.m 1,085.44 sq.ft

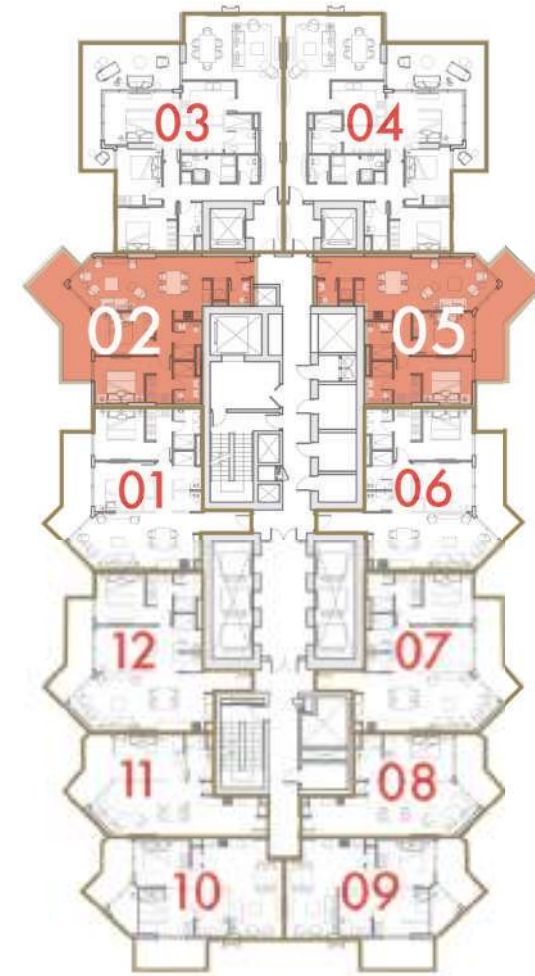
FLOOR 16-23 | UNITS 2&5



2 BEDROOM

Disclaimer: All pictures, plans, layouts, information, data and details included in this brochure are indicative only and may change at any time up to the final 'as built' status in accordance with final designs of the project, regulatory approvals and planning permissions. All accessories and interior finishes such as wallpaper, chandeliers, furniture, electronics, white goods, curtains, hard and soft landscaping, pavements, features, gym, swimming pool(s) and other elements displayed in the brochure, or within the show apartment or between the plot boundary and the unit, are not part of the unit and are shown for illustrative purposes only.

DUBAI CANAL



UNIT AREA	84.09 sq.m 905.14 sq.ft
BALCONY AREA	18.67 sq.m 200.96 sq.ft
TOTAL AREA	102.76 sq.m 1,106.11 sq.ft

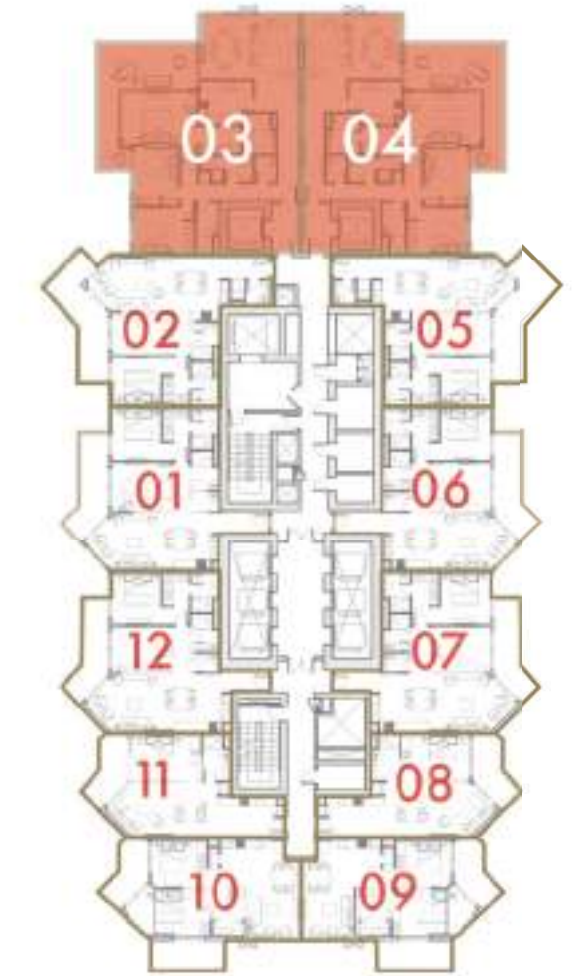
FLOOR 16-23 | UNITS 3&4



3 BEDROOM

Disclaimer: All pictures, plans, layouts, information, data and details included in this brochure are indicative only and may change at any time up to the final 'as built' status in accordance with final designs of the project, regulatory approvals and planning permissions. All accessories and interior finishes such as wallpaper, chandeliers, furniture, electronics, white goods, curtains, hard and soft landscaping, pavements, features, gym, swimming pool(s) and other elements displayed in the brochure, or within the show apartment or between the plot boundary and the unit, are not part of the unit and are shown for illustrative purposes only.

DUBAI CANAL



UNIT AREA	142.13 sq.m 1,529.89 sq.ft
BALCONY AREA	30.98 sq.m 333.47 sq.ft
TOTAL AREA	173.11 sq.m 1,863.36 sq.ft

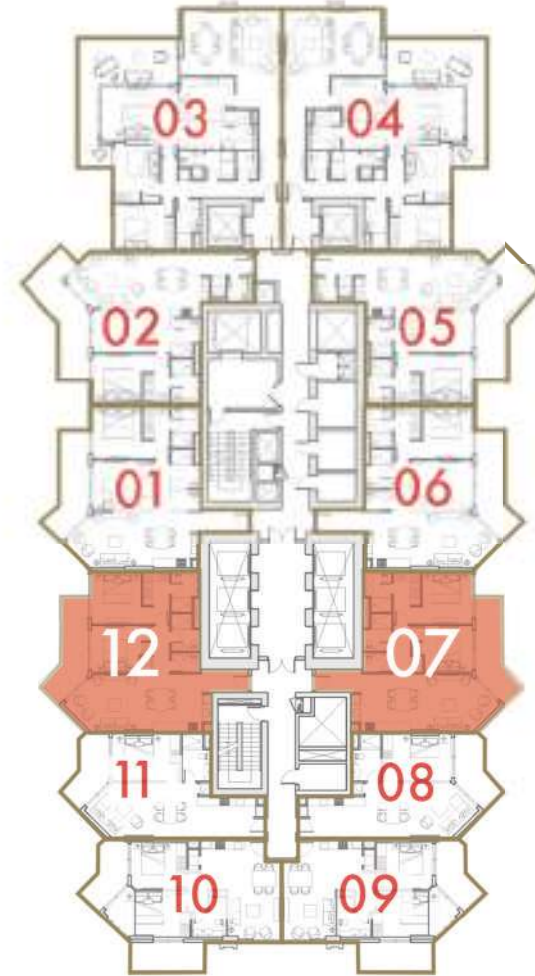
FLOOR 16-23 | UNITS 7&12



2 BEDROOM

Disclaimer: All pictures, plans, layouts, information, data and details included in this brochure are indicative only and may change at any time up to the final 'as built' status in accordance with final designs of the project, regulatory approvals and planning permissions. All accessories and interior finishes such as wallpaper, chandeliers, furniture, electronics, white goods, curtains, hard and soft landscaping, pavements, features, gym, swimming pool(s) and other elements displayed in the brochure, or within the show apartment or between the plot boundary and the unit, are not part of the unit and are shown for illustrative purposes only.

DUBAI CANAL



UNIT AREA	86.75 sq.m 933.78 sq.ft
BALCONY AREA	13.13 sq.m 141.33 sq.ft
TOTAL AREA	99.88 sq.m 1,075.11 sq.ft

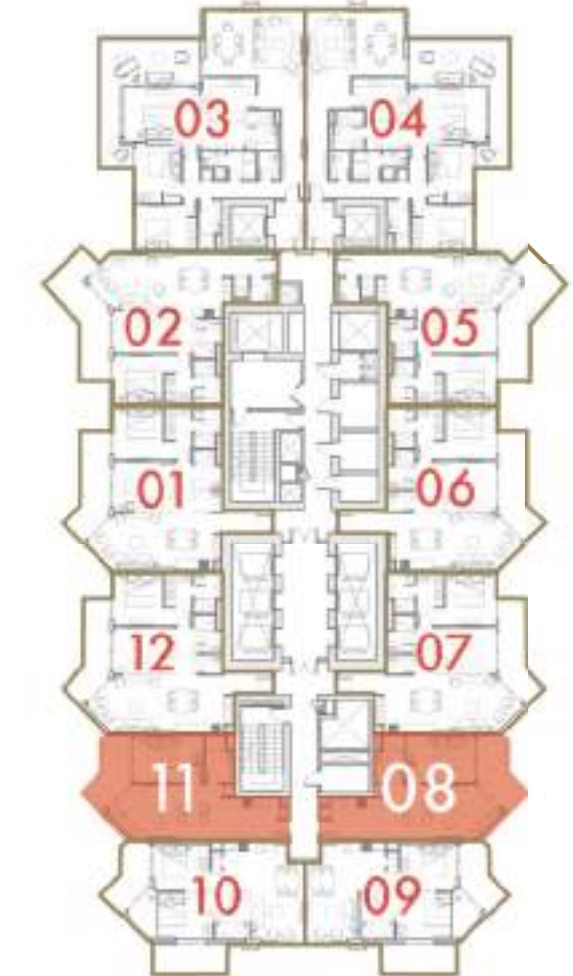
FLOOR 16-23 | UNITS 8&11



1 BEDROOM

Disclaimer: All pictures, plans, layouts, information, data and details included in this brochure are indicative only and may change at any time up to the final 'as built' status in accordance with final designs of the project, regulatory approvals and planning permissions. All accessories and interior finishes such as wallpaper, chandeliers, furniture, electronics, white goods, curtains, hard and soft landscaping, pavements, features, gym, swimming pool(s) and other elements displayed in the brochure, or within the show apartment or between the plot boundary and the unit, are not part of the unit and are shown for illustrative purposes only.

DUBAI CANAL



UNIT AREA	57.60 sq.m 620.01 sq.ft
BALCONY AREA	9.53 sq.m 102.58 sq.ft
TOTAL AREA	67.13 sq.m 722.59 sq.ft

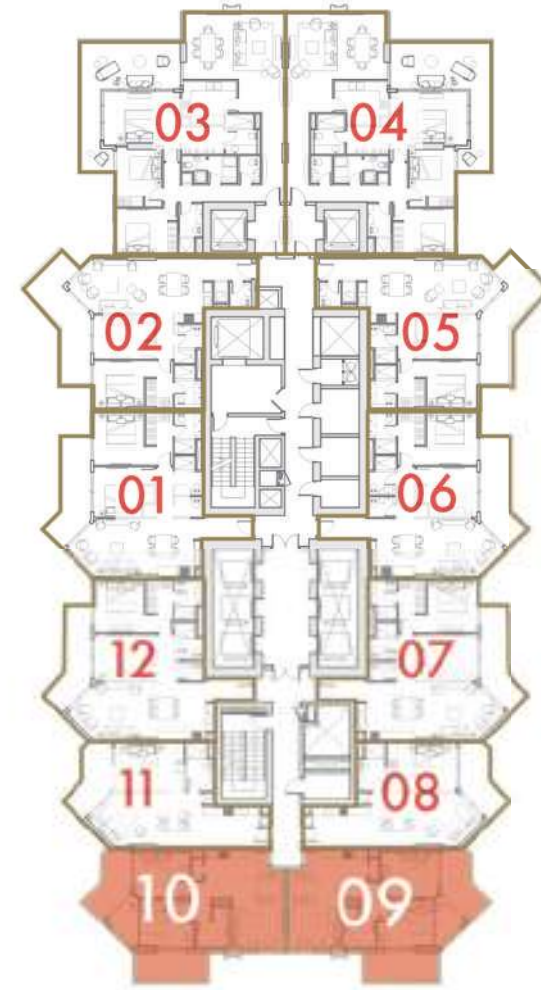
FLOOR 16-23 | UNITS 9&10



1 BEDROOM

Disclaimer: All pictures, plans, layouts, information, data and details included in this brochure are indicative only and may change at any time up to the final 'as built' status in accordance with final designs of the project, regulatory approvals and planning permissions. All accessories and interior finishes such as wallpaper, chandeliers, furniture, electronics, white goods, curtains, hard and soft landscaping, pavements, features, gym, swimming pool(s) and other elements displayed in the brochure, or within the show apartment or between the plot boundary and the unit, are not part of the unit and are shown for illustrative purposes only.

DUBAI CANAL



UNIT AREA	65.81 sq.m 708.38 sq.ft
BALCONY AREA	18.28 sq.m 196.77 sq.ft
TOTAL AREA	84.09 sq.m 905.14 sq.ft

FLOOR PLANS FLOOR 24

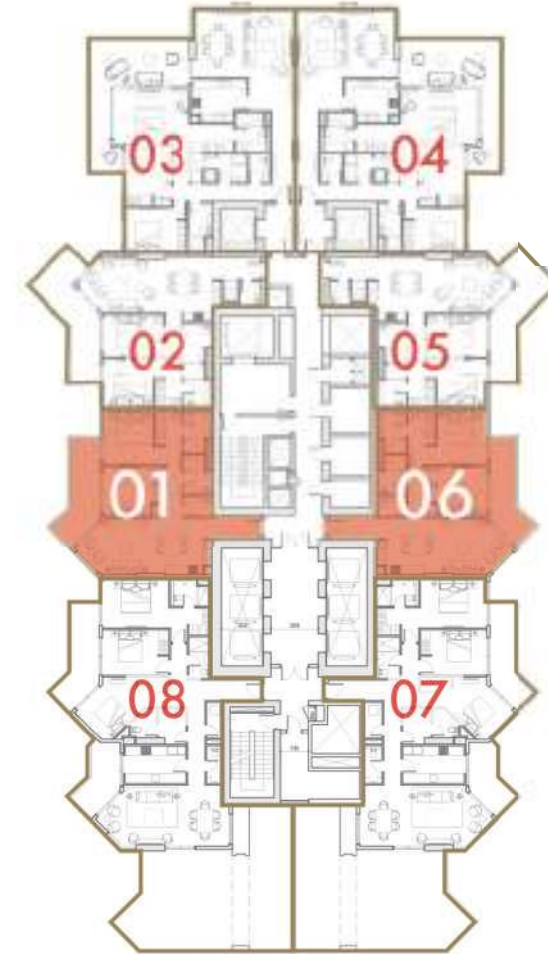
FLOOR 24 | UNITS 1&6



2 BEDROOM

Disclaimer: All pictures, plans, layouts, information, data and details included in this brochure are indicative only and may change at any time up to the final 'as built' status in accordance with final designs of the project, regulatory approvals and planning permissions. All accessories and interior finishes such as wallpaper, chandeliers, furniture, electronics, white goods, curtains, hard and soft landscaping, pavements, features, gym, swimming pool(s) and other elements displayed in the brochure, or within the show apartment or between the plot boundary and the unit, are not part of the unit and are shown for illustrative purposes only.

DUBAI CANAL



UNIT AREA	86.89 sq.m 935.28 sq.ft
BALCONY AREA	13.73 sq.m 147.79 sq.ft
TOTAL AREA	100.62 sq.m 1,083.07 sq.ft

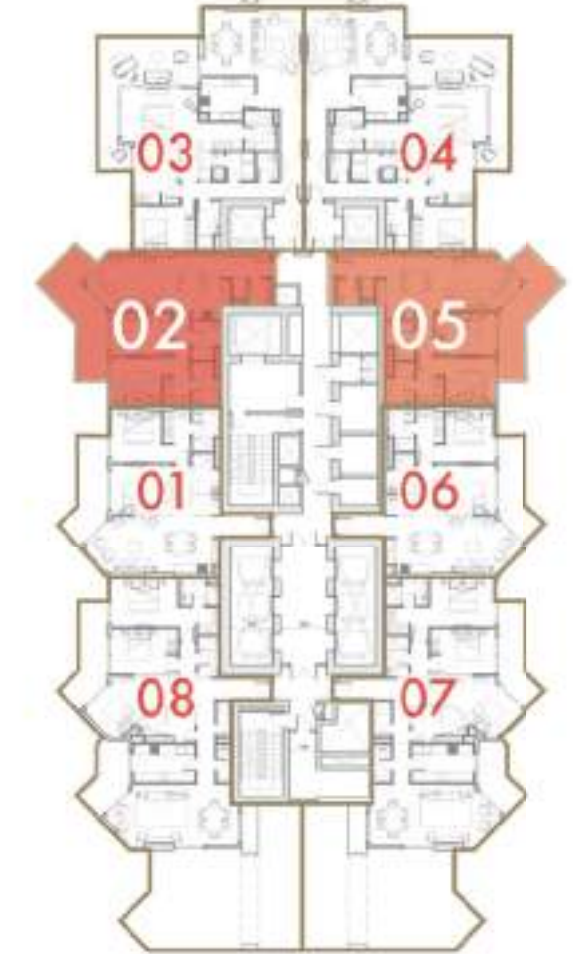
FLOOR 24 | UNITS 2&5



2 BEDROOM

Disclaimer: All pictures, plans, layouts, information, data and details included in this brochure are indicative only and may change at any time up to the final 'as built' status in accordance with final designs of the project, regulatory approvals and planning permissions. All accessories and interior finishes such as wallpaper, chandeliers, furniture, electronics, white goods, curtains, hard and soft landscaping, pavements, features, gym, swimming pool(s) and other elements displayed in the brochure, or within the show apartment or between the plot boundary and the unit, are not part of the unit and are shown for illustrative purposes only.

DUBAI CANAL



UNIT AREA	84.09 sq.m 905.14 sq.ft
BALCONY AREA	18.67 sq.m 200.96 sq.ft
TOTAL AREA	102.76 sq.m 1,106.11 sq.ft

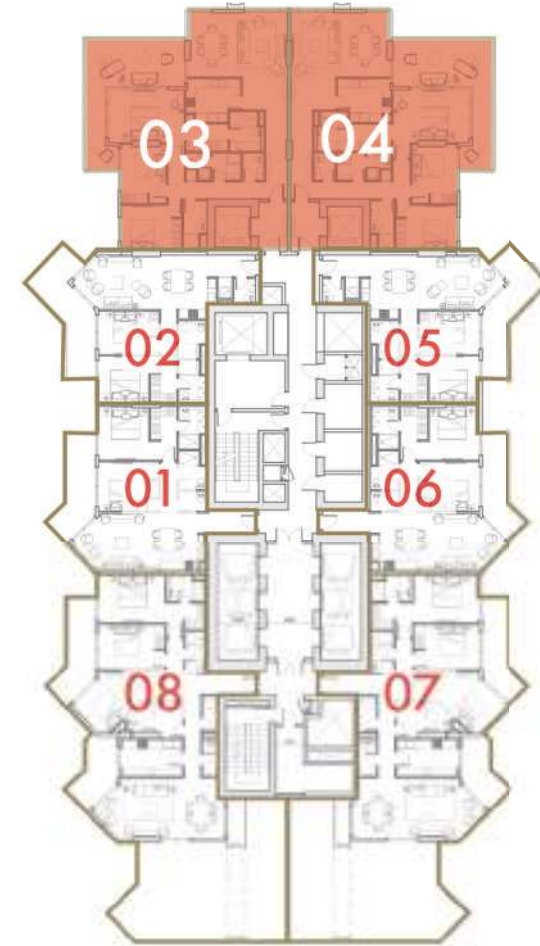
FLOOR 24 | UNITS 3&4



3 BEDROOM

Disclaimer: All pictures, plans, layouts, information, data and details included in this brochure are indicative only and may change at any time up to the final 'as built' status in accordance with final designs of the project, regulatory approvals and planning permissions. All accessories and interior finishes such as wallpaper, chandeliers, furniture, electronics, white goods, curtains, hard and soft landscaping, pavements, features, gym, swimming pool(s) and other elements displayed in the brochure, or within the show apartment or between the plot boundary and the unit, are not part of the unit and are shown for illustrative purposes only.

DUBAI CANAL



UNIT AREA	141.96 sq.m 1,528.06 sq.ft
BALCONY AREA	31.09 sq.m 334.65 sq.ft
TOTAL AREA	173.05 sq.m 1,862.71 sq.ft

FLOOR 24 | UNITS 7&8



3 BEDROOM

Disclaimer: All pictures, plans, layouts, information, data and details included in this brochure are indicative only and may change at any time up to the final 'as built' status in accordance with final designs of the project, regulatory approvals and planning permissions. All accessories and interior finishes such as wallpaper, chandeliers, furniture, electronics, white goods, curtains, hard and soft landscaping, pavements, features, gym, swimming pool(s) and other elements displayed in the brochure, or within the show apartment or between the plot boundary and the unit, are not part of the unit and are shown for illustrative purposes only.

DUBAI CANAL



UNIT AREA	137.04 sq.m 1,475.10 sq.ft
BALCONY AREA	103.20 sq.m 1,110.84 sq.ft
TOTAL AREA	240.24 sq.m 2,585.94 sq.ft

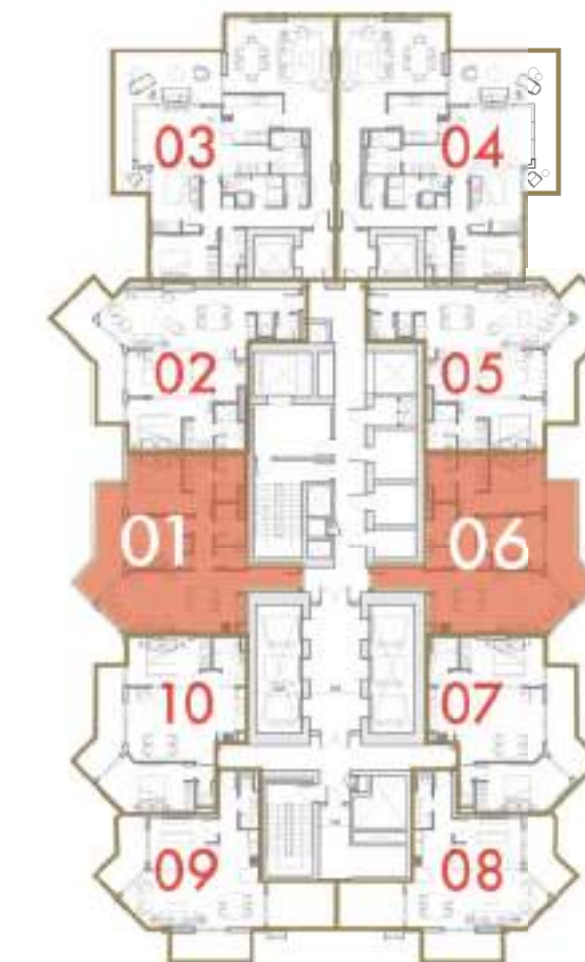
FLOOR PLANS

FLOOR 25 - 29

FLOOR 25-29 | UNITS 1&6



DUBAI CANAL



2 BEDROOM

Disclaimer: All pictures, plans, layouts, information, data and details included in this brochure are indicative only and may change at any time up to the final 'as built' status in accordance with final designs of the project, regulatory approvals and planning permissions. All accessories and interior finishes such as wallpaper, chandeliers, furniture, electronics, white goods, curtains, hard and soft landscaping, pavements, features, gym, swimming pool(s) and other elements displayed in the brochure, or within the show apartment or between the plot boundary and the unit, are not part of the unit and are shown for illustrative purposes only.

UNIT AREA	87.10 sq.m 937.54 sq.ft
BALCONY AREA	13.73 sq.m 147.79 sq.ft
TOTAL AREA	100.83 sq.m 1,085.33 sq.ft

FLOOR 25-29 | UNITS 2&5



DUBAI CANAL



2 BEDROOM

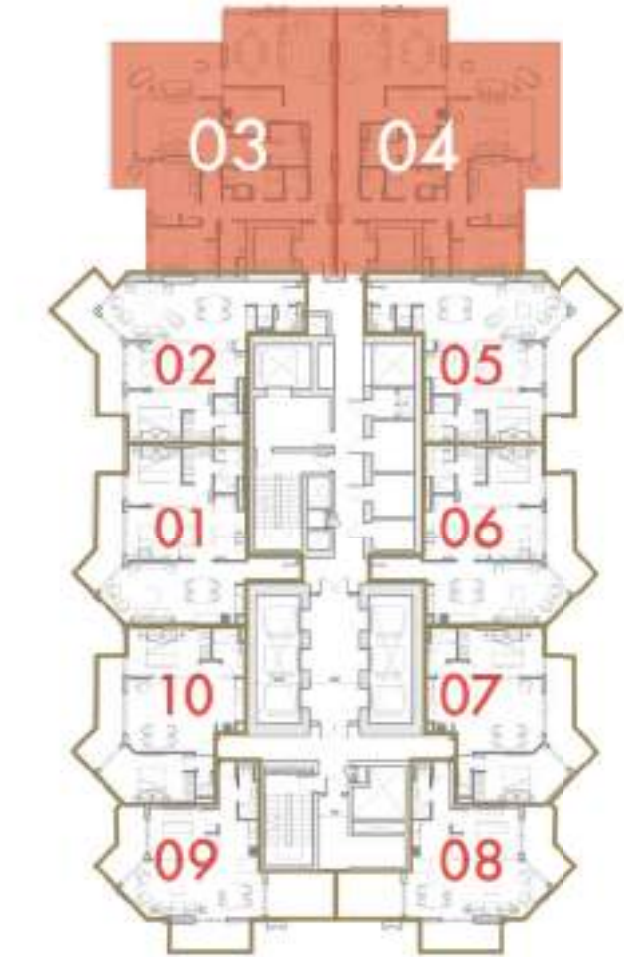
Disclaimer: All pictures, plans, layouts, information, data and details included in this brochure are indicative only and may change at any time up to the final 'as built' status in accordance with final designs of the project, regulatory approvals and planning permissions. All accessories and interior finishes such as wallpaper, chandeliers, furniture, electronics, white goods, curtains, hard and soft landscaping, pavements, features, gym, swimming pool(s) and other elements displayed in the brochure, or within the show apartment or between the plot boundary and the unit, are not part of the unit and are shown for illustrative purposes only.

UNIT AREA	84.11 sq.m 905.36 sq.ft
BALCONY AREA	18.65 sq.m 200.75 sq.ft
TOTAL AREA	102.76 sq.m 1,106.11 sq.ft

FLOOR 25-29 | UNITS 3&4



DUBAI CANAL



3 BEDROOM

Disclaimer: All pictures, plans, layouts, information, data and details included in this brochure are indicative only and may change at any time up to the final 'as built' status in accordance with final designs of the project, regulatory approvals and planning permissions. All accessories and interior finishes such as wallpaper, chandeliers, furniture, electronics, white goods, curtains, hard and soft landscaping, pavements, features, gym, swimming pool(s) and other elements displayed in the brochure, or within the show apartment or between the plot boundary and the unit, are not part of the unit and are shown for illustrative purposes only.

UNIT AREA	141.97 sq.m 1,528.17 sq.ft
BALCONY AREA	31.09 sq.m 334.65 sq.ft
TOTAL AREA	173.06 sq.m 1,862.22 sq.ft

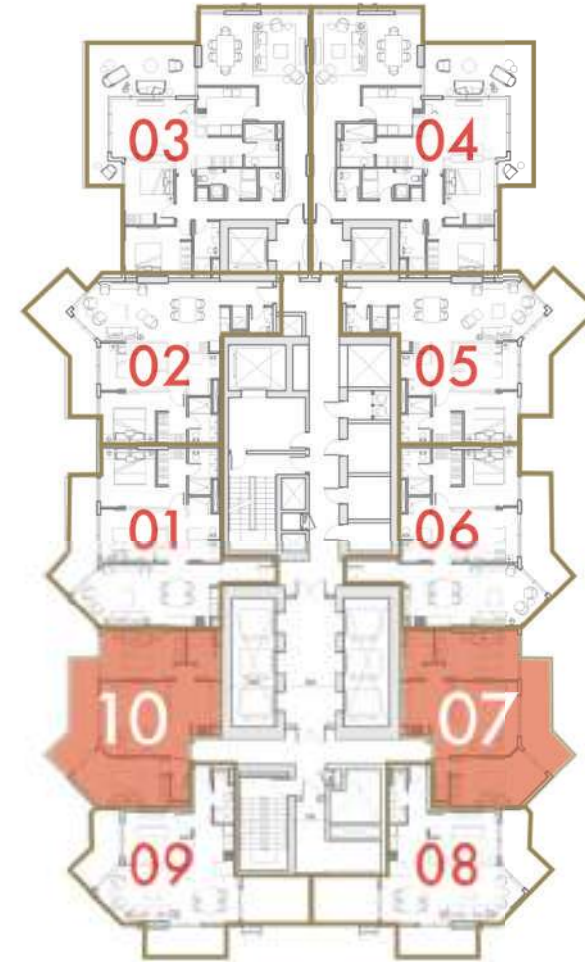
FLOOR 25-29 | UNITS 7&10



2 BEDROOM

Disclaimer: All pictures, plans, layouts, information, data and details included in this brochure are indicative only and may change at any time up to the final 'as built' status in accordance with final designs of the project, regulatory approvals and planning permissions. All accessories and interior finishes such as wallpaper, chandeliers, furniture, electronics, white goods, curtains, hard and soft landscaping, pavements, features, gym, swimming pool(s) and other elements displayed in the brochure, or within the show apartment or between the plot boundary and the unit, are not part of the unit and are shown for illustrative purposes only.

DUBAI CANAL



UNIT AREA	71.35 sq.m 768.01 sq.ft
BALCONY AREA	13.19 sq.m 141.98 sq.ft
TOTAL AREA	84.54 sq.m 909.99 sq.ft

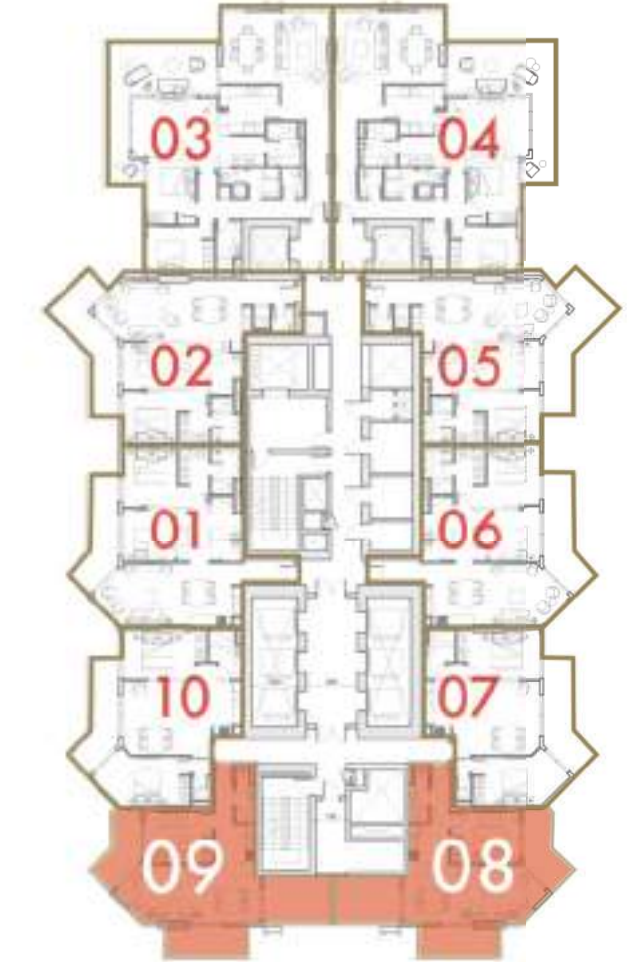
FLOOR 25-29 | UNITS 8&9



1 BEDROOM

Disclaimer: All pictures, plans, layouts, information, data and details included in this brochure are indicative only and may change at any time up to the final 'as built' status in accordance with final designs of the project, regulatory approvals and planning permissions. All accessories and interior finishes such as wallpaper, chandeliers, furniture, electronics, white goods, curtains, hard and soft landscaping, pavements, features, gym, swimming pool(s) and other elements displayed in the brochure, or within the show apartment or between the plot boundary and the unit, are not part of the unit and are shown for illustrative purposes only.

DUBAI CANAL



UNIT AREA	55.83 sq.m 600.95 sq.ft
BALCONY AREA	30.74 sq.m 330.89 sq.ft
TOTAL AREA	86.57 sq.m 931.84 sq.ft

DAR
AL ARKAN
دار الأركان