



April 2018 Monthly Newsletter



TOWNHOMES AT *Stonecrest*

1220 Stonecrest Place
Kirkwood, MO 63122
www.townhomesatstonecrest.com



Community Staff

Mandy Schulte, Community Manager
LaToya Hudson, Assistant Manager
Donnell Irvin, Maintenance

Office Information

Office Phone: (314) 822-1399
Office Fax: (314) 822-1385

Office Hours

Monday thru Friday: 9:00AM - 6:00PM
Saturday: Closed
Sunday: Closed

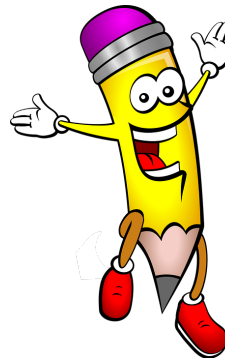
Important Phone Numbers

Emergency Maintenance:
(314) 822-1399
Poison Control: (800) 222-1222
Asset Towing and Recovery:
(314) 429-5800
Non-Emergency Police Department:
(314) 615-5325
Emergency Fire, Police or Ambulance:
911

KIRKWOOD EVENTS

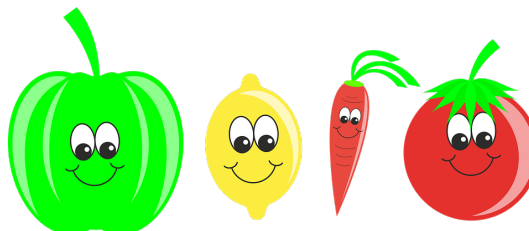
KIRKWOOD I.S.D. HALF DAY

All schools will have a half day on Friday, April 6th.

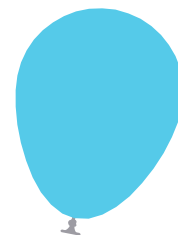


KIRKWOOD FARMERS MARKET

Opening Day, Saturday, April 7th.



Happy Birthday
to our Residents with
Birthdays this month!

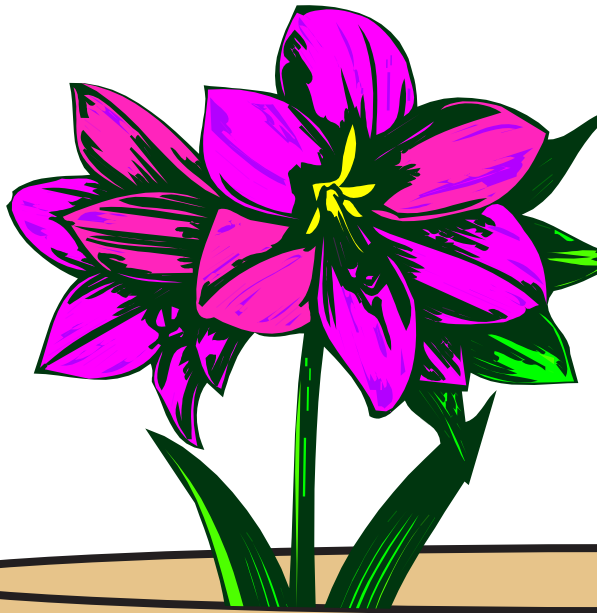


**Did you know that a clean air filter can help to keep
your apartment COOLER?**

Changing your filter monthly helps keep your
unit running better and uses less energy!
Stop by the office to pick up your **FREE filter today!**

APRIL 2018

Sunday	Monday	Tuesday	Wednesday	Thursday	Friday	Saturday
1 Rent Due! Easter Sunday April Fool's Day	2 Pest Control Inside Bldg 7 Stop by the office for a new air filter!	3	4	5	6	7
8	9 Pest Control Outside Bldg 7	10	11	12	13	14
15	16 Pest Control Inside Bldg 8	17	18	19 <i>LIKE us on Facebook and Twitter!</i>	20	21
22 Earth Day	23 Pest Control Outside Bldg 8	24	25 Administrative Professionals Day	26	27	28
29	30					



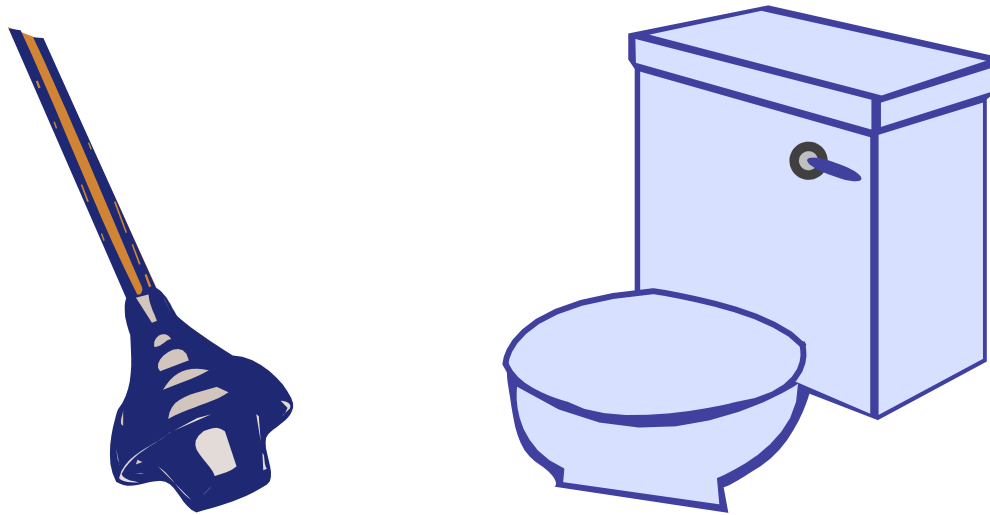
CARNATION
CHRYSANTHEMUM
DAFFODIL
DAISY
IRIS
LILAC
LILY
ORCHID
ROSE
SUNFLOWER
TULIP
VIOLET

April Word Search

Y	H	N	B	C	P	T	Z	B	K	X	L	C	X	L
S	I	R	I	I	E	Y	Y	E	F	F	H	K	W	I
E	H	G	C	L	L	L	L	W	Q	R	Z	W	K	D
V	H	R	O	G	O	I	I	J	Y	X	N	L	X	O
W	R	I	E	A	W	L	L	S	K	K	P	V	H	F
D	V	E	P	S	T	Y	A	L	Y	L	C	E	J	F
K	A	S	W	U	O	N	C	W	S	I	K	Q	G	A
N	G	I	L	O	T	R	A	U	G	O	S	S	H	D
E	H	I	S	H	L	E	T	N	B	Q	M	L	L	H
D	P	V	E	Y	P	F	O	R	C	H	I	D	M	B
T	X	M	K	A	X	G	N	Y	N	B	F	D	Z	W
N	U	J	N	C	T	D	T	U	T	Q	D	D	W	A
M	H	B	C	M	J	R	C	F	S	M	U	N	U	G
Y	W	T	X	U	C	U	S	V	X	U	S	F	Y	Q
S	W	N	O	I	T	A	N	R	A	C	I	P	K	Z

MAINTENANCE TIP OF THE MONTH

How to Plunge a Toilet



Step 1: There needs to be enough standing water in the toilet bowl. The ideal amount is enough to submerge the head of the plunger, but we need at least enough to cover the rim of the plunger cup (not the flange).

Step 2: Make sure the flange of the plunger is completely pulled out from the cup.

Step 3: Lower the plunger into the bowl at an angle so the cup fills with as much water as possible. If you go straight down the cup traps a lot of air, which compresses more than water and reduces the plunging force. Now fit the cup over the toilet's drain hole so the flange is inside the hole and the cup forms a complete seal around the outside of the hole.

Step 5: Grip the plunger handle in both hands and push down on the cup forcefully, then pull back up without breaking the cup's seal around the hole. Repeat the push-pull motion 5 or 6 times, then pull the cup off of the hole after the last thrust. The goal is to create rapidly alternating forces of compression and suction in the toilet drain, and this loosens the clog. Repeat the series of plunging motions as needed until the bowl empties by itself. Set the plunger aside.

*If you're pushing energy seems to be blowing out the side of the cup rather than down into the hole, you don't have a proper seal. Reposition the cup and try again.

Step 6: Remove the tank lid from the toilet and locate the round rubber trap door (called the flapper) at the center of the tank bottom (this is your emergency water shut off if the toilet is still clogged).

Step 7: Flush the toilet. If it flushes normally, you're all done, and you can set the lid back on the tank.

*If you're not so lucky and the toilet is still clogged and threatens to overflow, reach into the tank and push the flapper down over the hole to stop the flow of water from the tank to the bowl.