

The MARIJUANA GROW BIBLE

How To Grow Weed: A Step-by-Step Guide For Beginners

MARIJUANA GROW GUIDE FOR BEGINNERS

Congratulations! You've just downloaded the Marijuana Grow Bible. This grow guide will teach you everything you need to know about growing marijuana. Every aspect of the growing process is explained here, from germinating seeds to drying and storing your marijuana buds, both indoors and outdoors. Carefully read this guide to start growing like a professional.

I wrote this guide after receiving many questions and requests from visitors of ilovegrowingmarijuana.com. Many people requested a collection of the articles on my website as a PDF to read on-the-go or to print out. I want to help people grow, and I hope you'll share your knowledge as well. Feel free to share this guide with fellow growers.

So if you want to grow medical marijuana, marijuana for recreational use, or make some money from it, this beginner grow guide will help you grow the best plants possible. Learn all about marijuana seeds, watering, pruning, and harvesting marijuana both indoors and outdoors. If you grow marijuana indoors, you can yield up to 18 ounces per 10 ft² with a 600-watt HPS light. Outdoors, you can yield up to 18 ounces per plant. It all depends on the love and care you put into growing your plants.

To learn more about this beautiful plant please visit

www.ilovegrowingmarijuana.com.

For regular updates and the latest growing techniques be sure to check out my accounts on **Facebook**, **Twitter**, **Instagram** and **YouTube**.

Happy growing,

Robert Bergman



CONTENTS

Preface	5
Types of Marijuana	7
Marijuana Seeds.	9
Growing Marijuana	11
<i>Indoor Growing.</i>	<i>11</i>
<i>Lights.</i>	<i>12</i>
<i>Germination</i>	<i>14</i>
<i>Germination Soil.</i>	<i>16</i>
<i>Light Cycle and Distance from Plants</i>	<i>17</i>
<i>Watering.</i>	<i>19</i>
<i>Indoor Vegetative Growth.</i>	<i>21</i>
<i>Transplanting.</i>	<i>21</i>
<i>Vegetative Growth Techniques</i>	<i>23</i>
<i>Water and Lighting.</i>	<i>23</i>
<i>Soil Control</i>	<i>25</i>
<i>Nutrients and Feeding.</i>	<i>26</i>
<i>Pruning.</i>	<i>28</i>
Other Environmental Factors	30
<i>Air</i>	<i>30</i>
<i>Temperature</i>	<i>30</i>
<i>Humidity.</i>	<i>32</i>
<i>Carbon Dioxide (CO2).</i>	<i>32</i>
<i>Flowering</i>	<i>33</i>



PREFACE

Marijuana is likely one of the most interesting and rewarding plants to grow, if only because it has a remarkably short lifespan. You get to see the entire process from germination to harvest in only three to six months and, of course, you get to enjoy the fruits of your labor when the process is finished. Many prospective growers might take to growing marijuana with an air of nonchalance, but that is really not the way to go about it. It is a labor-intensive effort that requires you to take great care of the plants if you want the best product by harvest time. Even though it can be somewhat difficult, that doesn't mean it shouldn't be attempted at all. In fact, many people who have no gardening or horticultural history whatsoever have taken to growing cannabis. Many people suggest that, while you can't become addicted to marijuana *use*, you can certainly become addicted to marijuana growing. This beginner grow guide can undoubtedly give you a solid foundation to help make growing your marijuana garden a much simpler process overall.

Of course, as marijuana's murky legal history in the United States (and, really, around the world) will let you know, growing marijuana comes with a certain amount of risk. Even the first states to legalize the recreational use of marijuana (Colorado and Washington) still maintain strict laws about actual marijuana growth. Indeed, the federal government has yet to back down from its stance that both marijuana possession and growth are punishable offenses. But that doesn't stop



people from growing it, and there are plenty of ways to ensure that you maintain a certain amount of security during the process.

The interesting thing about marijuana's legal status in modern times is that the plant and humanity have shared a sort of symbiotic relationship for centuries. The plant has thrived as a result of cultivation and humans have benefited from the medicinal effects that cannabis provides. Indeed, up until about 70 years ago, cannabis was used in Western medicine as a way to treat all kinds of different ailments. Unfortunately, many governments across the world have criminalized it despite the fact that it is one of the most innocuous drugs that you can use. It does not have the addictive properties of hard narcotics like cocaine or heroin and, in some cases, it's even safer than using commonly prescribed drugs. So grow and smoke as much as you want...





TYPES OF MARIJUANA

Marijuana is one of the only annual plants to have two different sexes. This means that plants can come in both male and female varieties, and even occasionally hermaphroditic varieties that have both male and female reproductive organs. There are also three major species of marijuana:

- ▶ **Indica:** Relatively short and wide, with greener colors and round leaves that have marble-like patterns. Provides a heavy, body high.
- ▶ **Sativa:** Can grow taller, but are thinner with more pointed leaves that don't have patterns on them. Provides an energetic, cerebral high.
- ▶ **Ruderalis:** Lesser known than the other two. Small plants, used primarily for making clothes, rope, etc.

Each of these types of marijuana has its own properties when it comes to actually using it. One of the largest indicators of potency for a particular plant is its THC (tetrahydrocannabinol) content. This is essentially the stuff that provides the soothing, medicinal qualities that many people associate with cannabis. In general, most growers use indica, sativa, or hybrid varieties of the two. Ruderalis generally gets left out of any cannabis cultivation because it lacks a high amount of



THC. Also, it should be pointed out that the female sex on the cannabis plant is most prized by growers because of its high THC content.



Indica, small and bushy



Sativa, tall and thin



Ruderalis, hemp.
Low THC

In general, the THC in female plants rises when the plant remains unpollinated. It will produce more flowers, more buds, and more THC resin, making the eventual smoke much more potent by the time of harvest. There are also plenty of other natural chemicals on a marijuana plant that influence the kind of high you receive. These chemicals are referred to as cannabinoids, and they interact with your cognitive and physical functions to produce altered states of mind and being. Growing the plants under ideal conditions will promote high-quality THC production in your female plants. Indica/Sativa hybrids like Skunk, Northern Lights, Orange Bud, and Blueberry are very popular. Read more about different **marijuana strains**.





MARIJUANA SEEDS

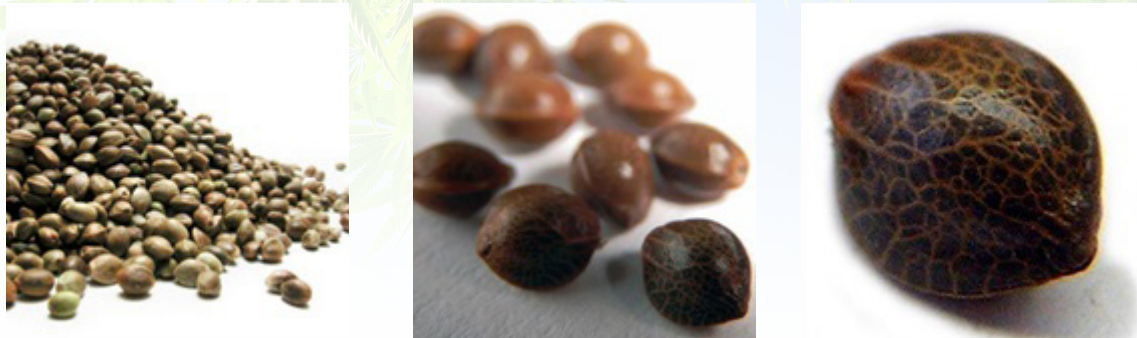
There are a number of ways to find marijuana seeds but, if you're in the United States, almost all of them are illegal. Of course, the most effective (and least expensive) way to get seeds is by receiving them from a friend. This will keep you off the radar of any law enforcement, and the seeds will be coming from a trusted source. There will be no surprises when it comes to the growth period or harvest time. Getting seeds from a fellow grower is an ideal scenario, but of course sometimes that isn't an option.

Another option you have at your disposal is buying seeds from a dealer. Of course, you'll need to have an in into the black market, and this option is really a toss-up when it comes to quality. It's possible to finish with some weird but very nice plants, but some of the seeds might be inert and won't grow to their full potential, if at all.

Your third option is to go through a seed bank. You can find a lot of these online, most of which are based out of the Netherlands or Canada where it's legal to sell marijuana seeds. Unfortunately, many Dutch seed banks refuse to ship to the US, and there is a decent possibility of getting ripped off in the end. There's minimal risk of being caught by any authorities because the seeds are packaged discreetly. Of course, if a postal employee mishandles the package, the seeds might come to you cracked or otherwise unusable. If you live near the border of



Canada, you could also cross the border and find a physical seed bank that might be willing to sell to you.



Healthy marijuana seeds

For novice growers who have some experience with different marijuana strains, locating a favorite type is likely a priority. Most vendors categorize their seeds by strain. They might have unique names for their individual strains, but the species (i.e., indica, sativa, etc.) will reveal what you can expect from the smoke. In any event, it's important to find the seeds that best correlate to the smoking experience you desire.

After receiving your marijuana seeds, make sure to inspect them for quality. Most mature seeds will have a dark brown color with swirling or marbling patterns. Mature seeds like these are the ones most likely to germinate and thrive. Seeds that are a sort of pale green are often not mature enough and were taken off the plant too early. There's no harm in trying to grow these, but you might not have as much success. Once you have a fully-grown crop you can harvest your own marijuana seeds and not need to deal with anyone in the future. What are your favorite marijuana seeds? Leave a comment on my article about **quality marijuana seeds**.





GROWING MARIJUANA

Obviously, obtaining seeds is only the first in a long line of steps that you must complete in order to start growing your marijuana plants. Before you start doing anything, you need to know where the growing will ultimately take place. Of course, there are two primary options: indoors or outdoors.

Growing marijuana isn't like picking up packages of pumpkin seeds at the grocery store and then throwing them into the ground. Many marijuana growers need to take stock of the feasibility of growing marijuana in the space they have to work with. For example, do you have enough space in your house to grow marijuana indoors? How many plants do you want to grow? Are you prepared for all of the unpredictabilities of being a grower? If you're growing marijuana outdoors, do you have a concealed location? How's the weather where you live? How's the soil?

The following sections of this e-book will explore these questions and much more.

Indoor Growing

For many people, growing marijuana indoors is the only option. Luckily, cannabis is a relatively versatile plant, and many varieties can be grown both indoors and out. Even so, you should check with the breeder (if



at all possible) to see where the plants are best grown. Sometimes breeders develop seeds specifically for outdoor use. The last thing you want to do is grow marijuana plants indoors that were really meant for the great outdoors.

If you grow your plants under the right circumstances, you can yield a lot of marijuana -- over a pound per square meter. Of course, temperature, air circulation, humidity, and plant care have to be perfect, but this can be controlled very well when growing indoors. No weather extremes or the neighbor's cat will damage your marijuana.

Lights

Lights often represent the lifeblood of plants that are grown indoors. Because any sunlight that they might receive is sparse, artificial light is valuable and necessary. Plants need the light to perform photosynthesis, which is vital for sugar and tissue production.

Many people who grow for personal use will use a closet space for their garden. Some can get away with using a guest bedroom that can't be seen from the outside and is rarely used otherwise. Regardless, every grower must assess the viability, both in terms of space and electrical capacity, of bringing in large amounts of lights.

Most growers limit their choices to one of the following three options: fluorescents, incandescents, and HID (high-intensity discharge) lamps. To save yourself some time and money, it's in your best interest to opt for HID lamps during the vegetative and flowering stage. These are sold as Metal Halide (MH) or High-Pressure Sodium (HPS) lamps and they are, without question, the best for your marijuana garden. Although they have a higher up-front cost than fluorescent or incandescent



lights, their overall value is much greater in the long run because they don't require as much electricity as the other options, plus they are brighter also last much longer. Even if you're on a budget and don't want to throw away too much money up front, you must still factor in the cost of the electricity bill and bulb replacements.



Fluorescent light



Marijuana needs a lot of light



HPS light

So, when it comes down to it, MH and HPS lamps represent a much better value and product overall. The plants will also need an even distribution of light so that growth is congruent. A lot of professional growers hook up a track system that allows the light(s) to be moved. With this technique, the plants receive an optimal amount of light without needing extra lights here and there.

For seedlings, an HPS light bulb can be too much, so many growers use fluorescent lights during germination. They don't produce a lot of heat and can be lowered to just four inches above the top leaves.

Reflective material also helps enhance the amount of light that the plants receive. This can be as simple as lining the walls with aluminum foil or just painting the walls of the room with bright white paint. While mirrors undoubtedly look nice as decorations, they don't actually reflect as much light as other materials.



Large indoor gardens (and the light they require) place some heavy burdens on electricity, but personal growers really won't have any problems because they might only use a few hundred volts per hour. This usage would add, at the most, about \$10 to the electric bill. Extensive growers, on the other hand, might be limited by the size of their circuit. For instance, older homes might only have a 15-amp circuit that can't maintain all the excess light that a large garden needs. Read these articles about **HPS** and **fluorescent** lights and let me know what kind of lights you use.

Germination

Once the lights are up, you can begin the process of germination. Germination essentially entails planting the marijuana seed and coercing it to sprout. If you don't provide it with the right environment, the seed will just remain a seed for the foreseeable future.

There are several methods that you can use to germinate your marijuana seeds, and every grower recommends something different. For the most part, the options are limited to either using soil (or another growing medium) or a wet paper towel.

Just by looking at these options, soil seems like it would be the most natural way of germinating a seed and, indeed, that is the case. Simply place the seed about 3 mm deep into the soil and keep the soil moist for about 7 days. This usually has around a 75% to 80% success rate in terms of getting seeds to germinate. This also depends on the seed quality.





Germinating process

The wet paper towel method is another method that is relatively simple. For this, you place the seed on a damp paper towel and fold the towel over it. In theory, the success rate with this method is around 80% to 90%, but it is more common for breakages to occur while transplanting. The seedling clearly won't be able to thrive in a paper towel, so transplanting is necessary, and it must be performed with great care.

Other options for germination include "propagation kits," which is just a fancy and more economical way to say "growing media for seeds." These include Rockwool cubes and have a similar success rate when compared to the paper towel trick. You can find these kits at many garden centers.

Still, the easiest method for any beginner is just to use soil. Transplanting will not be necessary, and it really is the most natural way to get your seeds to germinate adequately. When transplanting the seedlings at such an early age, you run the risk of "shocking" the plants. This will either stunt their growth or kill them altogether, so it makes sense to just stick with using soil until you get comfortable enough as a grower to use something else.



I've met many growers over the years, and everybody has their own way of germinating seeds. Some prefer soil, others rockwool or peat pots. What is your favorite way of germinating seeds? Read my article about **germinating marijuana seeds** and leave a comment.

Germination Soil

This brings up an obvious question: "What kind of soil should I use for germination?" At many garden centers, you will find soils that are marketed specifically as "germination soils." Nothing really separates these soils from more conventional soils except that they have certain nutrients and don't contain any composted material. Look for soils that have an NPK (Nitrogen-Phosphorus-Potassium) ratio of around 5:1:1 or 8:4:4. Really, any soil with more nitrogen than the other two nutrients will be adequate for germinating marijuana seeds.

The containers you place the soil in are also relatively important. It's common for growers to use buckets that can hold between 2 and 5 gallons because the root system in a marijuana plant can become quite extensive. Smaller containers will work for the germination and seedling period, but the plants will need to be transplanted later. Thus, it makes sense to plant the marijuana seeds and leave the plants in a single 2- to 5-gallon bucket for the majority of their lives. This gives the roots adequate room to grow and thrive while also providing a perfect environment for nutrients and a satisfactory reservoir of water. Also, leaving them in buckets makes them easily transportable.





Seed cracks open



Leaves come out



Ready to grow...

Depending on the intensity of the lights you use, the plants will need about 25 to 35 watts per square foot. The seeds won't need light to germinate right away, but it's common for growers to turn the lights on after sowing the seeds to warm the soil and promote germination. It's also a good idea to keep the lights on and ready for when the first sprouts appear out of the soil.

A few other things to take into account are the pH balance and the actual texture of the soil. You can feasibly use the same soil throughout the life of the plant if you ensure that water can drain properly (soil texture) and the soil maintains a good pH balance (between 6.0 and 8.0). The texture is particularly important because soils should neither be too dry nor too moist. Moist soils that have an almost muddy consistency reduce the amount of oxygen that can reach the roots. As long as the roots can "breathe" and still maintain adequate water uptake, the soil should be fine.

Light Cycle and Distance from Plants

Perhaps the best thing about growing marijuana indoors is that you have more control over virtually every aspect of the growing process.



While the seeds themselves won't need light initially, they will certainly need some light when they produce visible sprouts. Light acts as their sustenance during this period of time, and it can affect the plants later in life if they are deprived of the valuable light they require. This assumes, of course, that the soil, nutrient quality, and watering regimen are all adequate as well.

At this delicate stage, the lights should be somewhat close to the marijuana plants. In fact, dropping them down to about four inches away from the soil is ideal if you use fluorescent lights. The light cycle should also be relatively consistent at around 16 to 18 hours of light per day. This will be the light cycle for a majority of the plant's life, but it can be hard to maintain a reliable schedule. To remedy this, you can purchase an automatic timer, which only costs about \$8 and will let you focus on other things.



Lights close to plants



Automatic timer



Small plants under fluorescent light

Depending on the particular strain, some plants could stand to use a more intensive light regimen. Cannabis really tends to absorb light voraciously because it is a high-energy plant. Some marijuana growers have been known to expose their plants to a light cycle with a full 24 hours of light. Most growers won't have to go to those extremes, but you may need to increase the light cycle to over 18 hours at some point if you want to improve growth. Of course, an automatic light timer can



make this considerably easier, and some lights actually come installed with a timer.

As the marijuana plant ages and starts to grow, the lights should still remain as close to the leaves as possible without damaging them. The instructions on the lights might tell you to keep them at a certain distance from the plants, but cannabis requires a lot of light energy to thrive. In fact, with lower output bulbs, you can place the lights 2 to 4 inches away from the tops of the leaves. For higher output bulbs, you can place them 4 to 6 inches from the tops of the leaves.

Watering

Every living thing on the planet requires water in some form, but, when working with marijuana, extra caution should be exercised. During the germination period, avoid overwhelming the marijuana plant with moisture. The top layer of soil should be kept moist, but even then it's best to only use a few spritzes of water from a spray bottle. When the plant actually sprouts, keep the area near the stem dry. This is because moist conditions around the stem are often conducive to stem rot.

At this stage (and, really, any stage) it's relatively easy to overwater marijuana plants. Using excessive water can cause significant issues with the soil and place stress on the plants. As mentioned previously, the soil should not be too wet. If you make the soil soggy by overwatering it, the roots will essentially drown due to a lack of oxygen. This is particularly true when watering small marijuana seedlings in large pots. These plants won't need to be watered as much as bigger plants because they won't need to take in as much water.



Unfortunately, it can be hard to tell if you are overwatering your plants because the symptoms of overwatering and underwatering are exactly the same (i.e. the leaves will droop). One way to check is by inspecting the moisture level of the soil. You can do this by merely touching the soil with your hand. If the soil feels damp, then holding off on watering your plants is the best course of action. It will still have plenty of water to draw from in the soil if it is clearly moist. If the soil is dry, then adding more water is advisable. As the plants grow, they will require more and more water to quench their thirst.



Keep soil moist



Use regular plant sprayer



Spray leaves every now and then

Overall, keeping the soil exceptionally moist or exceptionally dry for any long period of time will not be good for the plants. In fact, it actually needs to alternate between moist and dry to provide better aeration in the soil.

Tap water is frequently used to grow marijuana, but many growers have concerns about its viability. Some municipal water systems put a lot of chlorine in the water which could kill beneficial bacteria around the plant. In general, chlorine isn't going to be a huge problem, and many plants grow and thrive using chlorinated water. Some solutions that are normally used for fish tanks can also work for growing a marijuana garden. Try adding sodium to the tap water prior to watering. The sodium then bonds with chlorine in the water to make sodium



chloride (a.k.a. salt). This won't harm the plant but, if used in excess, the soil could become too saline.

It's also possible for your water supply to be infected with other minerals, which is a condition known as hard water. While hard water might be detrimental to your plumbing over an extended period of time, it won't have any negative effects on the plants. In fact, the minerals in the water actually help promote growth by adding extra nutrients. It is advisable to stay away from artificial water softeners during the growing period because they tend to put excessive amounts of sodium in the water supply, making it unsafe for the soil and the plant. They also use a lot of other artificial additives that might not be good for your plant later on.

Indoor Vegetative Growth

Once the marijuana plant progresses out of the seedling stage, it will enter the vegetative growth period. During this time, the growth rate will increase by leaps and bounds, with more leaves and branches appearing. The seedlings will also finally start looking like actual marijuana plants.

Transplanting

Marijuana plants that were germinated in small pots will need to be transplanted to larger ones as soon as the vegetative growth starts kicking in. If the containers are too small for the plants, they can quickly become rootbound and begin to lose vigor (or even die). The key is, of course, to transplant them before that happens.



Of course, the transplanting process should be treated with a lot of care because transplant shock is common. You can avoid transplant shock if you treat the process with extreme caution. Before you do anything, make sure the soil is moist so that nothing will be jarred out of place. Then, insert a spade (or even a large spoon) into the soil about 1 inch away from the plant's stem. Make sure that you don't damage the roots and that you take out a large enough clump to do the transplant. You should have a previously prepared hole in the new soil. It should be dug in such a way that the seedling will be at the same height.



Squeeze pot and hold upside down



Beware of becoming rootbound



Almost rootbound

Place the plant into the hole and cover it as best as you can with the new soil. Then, moisten the soil so that the transplant and the host soil meld nicely together. If you do this carefully and correctly, you won't have to worry about the plants suffering from any transplant shock, and they will continue to grow like normal.

I transplant my plants when the first root tips grow out the bottom of the pot. Read more about when and how to **transplant marijuana plants**.



Vegetative Growth Techniques

From this point on, the plants will primarily live out their lives in vegetative growth. It is important to make sure that you provide them with all the proper environmental conditions during this stage to promote growth, higher yields, and potency. One of the benefits of growing marijuana indoors is that you can manipulate the conditions exactly as you see fit without having to worry about environmental factors.

Water and Lighting

We've already seen how plants should be watered and how much light they should receive. During the vegetative growth period, the plants are likely going to become "thirstier" and require more water as they get larger. The same rules still apply when it comes to watering: don't severely overwater and don't severely underwater. Many growers develop patterns for watering their marijuana plants. For instance, you might water one day, skip watering for two days, and then water again.

It really depends on the plants themselves. You need to pay close attention to exactly how dry the soil gets after a few days. If the soil is still moist, then you can probably continue with the same pattern, but, if it dries out significantly before the next scheduled watering, you should increase the rate at which you're watering the marijuana plants.

When it comes to light, marijuana requires a lot of it. In fact, it is feasible to keep the lights on 24 hours per day to achieve the maximum growth potential. Adjustable light tracks are ideal when you have a large grow



room and little electricity so that you can move the lights around to every part of your garden. This way, every plant gets intense amounts of high-quality light.

Try to keep a sharp eye on the distance between the lights and the top of the plant canopy; 20 to 30 inches is usually perfect. The accelerated rate at which the plants tend to grow will cause them to inch closer to the lights almost on a daily basis. So, be sure to place the lights close enough so that they provide adequate light energy, but far enough away that they don't burn the tips of the leaves.



Watering marijuana



Vegetative stage



Light

If you want to avoid this, install an air-cooled or water-cooled system that will essentially reduce the heat that the lights produce. Electric light bulbs produce both light and heat whenever they are turned on. Of course, if you let them go unchecked, they can create incredibly hot temperatures. But, if you want to make use of all the light they have to offer, a cooling system will allow the lights to get closer and work better in the long run.

It should also be noted that certain lights emit different color spectrums. When we talk about visible light, we're referring to all the colors that we can see which is often represented by "ROYGBIV" (red, orange, yellow, green, blue, indigo, and violet). Marijuana tends to thrive under light that is strong in the red spectrum. This promotes



photosynthesis, which is vital for tissue production during vegetative growth. High-pressure sodium (HPS) lamps produce the most light in the red spectrum (and the most light in general) and are often the best choice during virtually every stage of the growing process.

Using anything that is high in the green spectrum will produce wilted, unproductive plants in general. This is largely because the plants reflect green light entirely, which is why they are green in color themselves.

Make sure to visit my website every now and then to get the latest **marijuana growing techniques**.

Soil Control

When you have an indoor marijuana garden you have more control over the soil, so you'll need to keep an eye on it. Marijuana prefers to grow in a nutrient-rich soil that has a neutral pH of around 7.0. Sometimes, however, the pH in the soil can shift quite far out of the acceptable ranges of 6.0 to 8.0. In such cases, you may need to take drastic measures to ensure that the soil does not end the life of your plants.

When pH levels fluctuate, it is often caused by chemical contamination. A soil flush can reduce contamination and balance the pH. However, this is generally not a recommended procedure, although it is sometimes necessary. A soil flush should only be used as a last resort when trying to keep your marijuana plant alive. To do it, place your entire plant, pot included, in a sink. From there, turn on the faucet and let the water run through the soil so that it eliminates any of the contaminants that might have been harming the plant. The danger of this method is a risk of killing the plant by oversaturation. Too much water is as bad as



too many nutrients. But, sometimes flushing the soil is the only way to ensure that additives don't kill your marijuana plants.



pH problems



Good pH



pH problems

For less severe issues, there are other options. If your soil's pH level drops below the recommended 6.0 and becomes too acidic, then you can simply add some lime to the soil the next time you water it. This should raise the pH back into an acceptable range between 6 and 8. If the soil is above 8 and, therefore, too alkaline, you might consider adding a mixture of cottonseed meal, lemon peels, and ground coffee.

Some fertilizers are also made to be highly acidic and can lower your soil's alkalinity if applied. In any event, it's always a good idea to keep checking the pH balance of your soil; otherwise, you could be in for a disappointing surprise.

Nutrients and Feeding

Of course, the primary cause of any significant irregularities in soil pH comes from the nutrients that you apply. Unlike standard dirt, soil for growing marijuana should be infused with nutrients. Sometimes, you can produce an adequate amount of nutrients just by combining certain fertilizers. But, in many cases, you will "water in" the nutrients using a solution. Of course, if you accidentally include too many

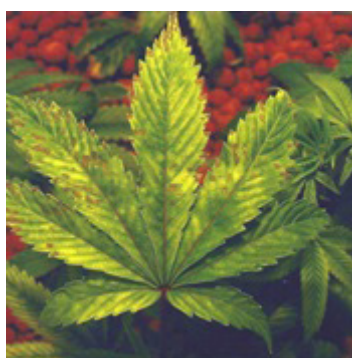


nutrients, you could wind up making the soil toxic (and then you will have to flush it out to fix it). Your water should have the proper pH as well. Professional growers use water with a pH of around 6.

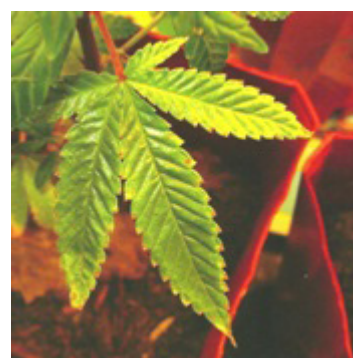
In any event, all plants need nutrients to thrive, and providing them with those nutrients can ensure that your work pays off in the end. We have already mentioned “NPK” (nitrogen, phosphorus, and potassium) as the three major nutrients for marijuana growers. Other essential chemicals for the cannabis plant include Calcium (Ca), Magnesium (Mg), and Sulfur (S). During vegetative growth, the fertilizing solution should have a concentration of N that is higher than or equal to both P and K. Again, you can use fertilizer if you want, however, it should be mixed in with the soil before beginning the growth process.



Nitrogen deficiency



Phosphorus deficiency



Potassium deficiency

There are also solutions that can be used for “feeding” the plant instead of mixing it into the soil; but keep in mind the fact that the plant won’t need to be fed that frequently. In fact, you only need to feed it about once every week if everything is going well. Note: you should never give your plants undiluted nutrients. Marijuana plants “burn” easily from full-strength nutrients. Instead, dilute the solution to around 50% so that you don’t have to use a soil flush later.

In general, you might not be able to notice whether or not your plants are fully absorbing the nutrients. In fact, in most cases, the nutrient



uptake will be the least of your worries. As long as the soil is good and you continue to use the same regimen, you should be all right. Many growers keep several diluted solutions on hand to make growing just a little bit easier. One of those should be an NPK solution where N has the most prominent concentration. This should be used for vegetative growth. Another should be an NPK solution in which the P has the highest concentration (used for the flowering stage). You can also keep a couple of bottles of diluted micronutrient solution if your plants need extra help along the way.

Nutrient deficiencies can damage your marijuana plants and seriously decrease the yield. The section on **nutrient deficiencies** on ilovegrowingmarijuana.com is an excellent reference for any nutrient problems.

Pruning

Pruning marijuana plants can be both a logistical necessity and something that helps produce more buds when it comes time to harvest. Many indoor growers will want to keep their plants 'in check' if they start to grow too high due to a lack of vertical space in their grow room. For the most part, indoor plants don't grow as large as outdoor plants, but they will need to be kept at bay if they start to grow really tall. Snipping off the top stem will also force the plant to create more branches and grow broader instead of taller. This way, although you may lose vertical height, you probably won't lose any of your yield.

If your goal is to ensure uniform growth, cutting the shoots and leaves won't really harm the plant if done in moderation. However, you don't want to get too carried away with this because cutting too many shoots and leaves can make it hard for the plant to regrow. You have to give



it some time to recuperate before cutting off a significant amount of leaves or shoots.



Before pruning



After pruning



After few weeks

For many growers, this might seem like a waste of perfectly adequate leaves and shoots, but during vegetative growth, the shoots are the most potent part of the plant. They can produce a high-quality smoke that will at least get you a little buzzed. The leaves can also be used in cooking preparations for potent edibles.

The marijuana plants in the picture on the right are being grown with a method called ScrOG. It's an advanced growing technique that can double your yield! Read this article about using the **ScrOG method for marijuana**.





OTHER ENVIRONMENTAL FACTORS

While it might seem obsessive, the vegetative growth period requires complete attention to detail on every aspect of the plant's development. Neglecting even one issue could end up causing detrimental effects in terms of your plant's ability to thrive and produce excellent bud.

Air

As with most living things, fresh air is something precious. Opening up a window or installing a fan system in the room can help provide your plants with some much-needed fresh air. Of course, if it is particularly cold outside, it's probably not a good idea to keep the window open for too long, even if it's your only means of refreshing the air. The cold outside will stunt plant growth and make it difficult for you to help them recover.

Temperature

The temperature of the plants and the grow room is also something that needs to be monitored and regulated. The average temperature for a grow room should be around 75°F. Even so, cannabis is remarkably adaptive and will produce buds in lower or higher temperatures. If the temperature drops to extreme lows or rises to extreme highs, then you



could be in for a surprise when it comes to the quality of your plants. Although cannabis can survive at temperatures as low as 50 to 55°F, it will not produce the most potent bud in those conditions. In general, keeping the room at about 75°F is your best bet.

In reality, plants will grow slightly better at slightly higher temperatures, but it might be difficult to maintain those higher temperatures. You might also need to counteract the extra heat by watering the plants more to cool down the roots.



Too hot, curling leaves



Perfect temperature



Too cold, small plants

Sometimes, lights present a problem when it comes to maintaining a consistent temperature. Lights that produce a great deal of heat can give the room a sweltering feel and cause the plants to dry up or burn. If this is a problem, then you might want to install an air- or water-cooled system to alleviate the extra heat. You can even install an air conditioner if it is cost effective for your grow room. Most homes maintain an average temperature that is ideal for growing marijuana, but it's essential to monitor the temperature on a daily basis to ensure that your plants are being taken care of properly.



Humidity

You might think of humidity as something that occurs in the Deep South or tropical environments, but humidity can be found virtually everywhere – including your grow room. In general, about 40 to 80% relative humidity (rH) is ideal. Humidity is basically a measurement of the water in the air. Humidity is controlled through the use of fresh air (as stated above). Some growers even have an rH meter on hand to ensure the humidity stays within an ideal range. There are also expensive dehumidifiers that control humidity levels in a room, but they can be quite expensive. Unless you're planning on setting up a rather substantial operation, you can probably get by with a little fresh air once in a while.

Carbon Dioxide (CO2)

CO2 is another vital component that plants need to survive. CO2 isn't that great for humans, but plants like cannabis use CO2 as their air. It's basically the stuff that helps them breathe, but it is also vital for spurring and maintaining photosynthesis. If your grow room lacks enough CO2, it will likely become obvious. There are plenty of methods to increase CO2 in a room, but the best way is with a CO2 generator. These generators will keep a steady flow of CO2 coming into the room, which the plants will easily consume. There's almost no way to overfeed cannabis plants with CO2 unless you somehow go really overboard. For instance, if the grow room is unsafe for you to breathe, then you might need to tone it down a little. Otherwise, the amount of carbon dioxide in the room is directly proportional to how large the plant (and later the buds) will end up growing.



Flowering

Because you're growing indoors, when your plants begin to flower is almost wholly dependent on when you want the plants to flower. Of course, you want them to flower when the buds are at their highest potency. It's feasible to keep a marijuana plant in a vegetative state for up to 10 years, but those plants certainly won't be potent by the end of such a long lifespan. Before you induce flowering, make sure you know which plants are male and which ones are female.



Grow huge marijuana buds

Determining the Sex

In general, marijuana plants start to “pre-flower” before you even manipulate them to flower. During this time, they will exhibit subtle signs of their sex. Male plants will generally start to pre-flower earlier than females (by around two weeks). You'll notice the male plants growing taller than the females. They also might develop sacs that resemble buds but aren't actually buds. The reason the male plants grow faster and taller than the female plants is so they can pollinate them. The pollen in the sacs (or false buds) will drop down onto the females to start the pollination process.

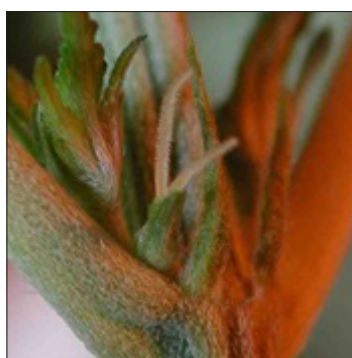


By contrast, the female plant will enter the pre-flowering stage by producing white, hairy growths at the nodes and on the top cola (the head). These are called pistils, and they are what attract the male pollen to the female plant.

There's really no surefire way to determine the sex of your plants until they start exhibiting these telltale signs. You can, however, take a cutting from one of the plants and plant it in an area separate from your garden. The cutting is basically a clone of its "mother" plant and will share the exact same genetic structure. You can then force the clone to flower, causing it to definitively start to show signs of its sex. Then, you can go back to your garden and label each plant that you do this for.



Male marijuana plant



Female marijuana plant



Hermaphrodite marijuana plant

Many growers want to determine the sex as soon as possible because the female plants will naturally produce a much better high. That's not to say that the males are useless, but you still want to distinguish between the two so that you know what you have. This is particularly true for growers who want "sinsemilla" buds. Sinsemilla literally means "without seed" in Spanish and, if the males are not allowed to pollinate the females, the plants will not produce any seeds. These seedless female plants are considerably more potent than their counterparts because they focus more attention on THC production and bud growth



rather than on producing seeds. In fact, you can practically see the THC resin dripping off their buds.

Of course, you'll need to take out the male plants early to produce these types of buds. If you rely on your own garden for seeds for next year's harvest, then this probably wouldn't be a good idea. As mentioned before, buying seeds from a dealer or even a seed-bank is often a random grab bag. You don't know what the seeds will become, and receiving a full batch of males is not outside the realm of possibility. Letting your male plants pollinate the female plants will provide you with plenty of seeds, and you won't have to pay for them.

It is also possible to end up with hermaphroditic plants, which are basically just plants that have both sets of reproductive organs. Thus, they might exhibit early signs of both male and female plants. Most growers also eliminate these plants from their crop even if they want to pollinate the females. While they are self-pollinating, they will only ever produce hermaphroditic plants, and they might even pollinate some non-hermaphroditic plants. It might seem like the best of both worlds, but your potency will be limited in these plants.

It should also be noted that male plants aren't useless in terms of smoking either. They can still produce a little bit of a high and can also be used in culinary preparations. However, it's critical to take out the males if you want to grow sinsemilla marijuana. One male marijuana plant can pollinate hundreds of females. For more on **sexing marijuana plants** visit ilovegrowingmarijuana.com.



How to Force Flowering

Now that you know how to check for the signs of male and female plants, the next step is getting them to flower properly. Just remember that, once you start flowering, it might be difficult to stop the males from pollinating the females if you haven't removed them. Even if you segregate the plants by their sex, the air still might carry some of the pollen to the female pistils. It's really a decision between whether you want hyper-potent buds for this year only or to keep growing your favorite strain without having to pay for new seeds. (Most personal growers will want to stick with the latter option because paying for your own seeds every year can be costly.)

In any event, if you want to force flowering, all you have to do is put the plants on a 12-12 light regimen. That essentially means that you'll need to leave the lights on for only about 12 hours per day and turn them off for the remaining 12 hours.



Flowering week 3



Flowering week 5



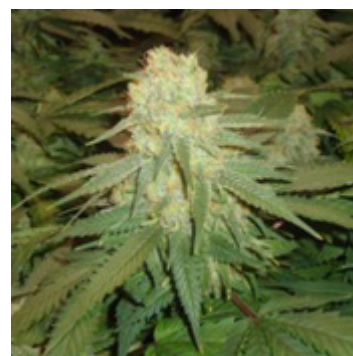
Flowering week 9

The room should be kept as dark as possible during the 12-hour dark period. Turning off the lights won't always do the trick, especially if there are other light sources nearby. In fact, even shining a flashlight on the plants for a few minutes at a time during the dark period can keep them in vegetative growth. If you have windows in your grow



room, do your best to block them out, especially if the sun comes up before the 12-hour period is over. If your lights came equipped with a timer, then it's a good idea to set that so you don't have to worry about manually turning the lights on and off every 12 hours.

You'll notice that the female plants will start to grow larger as the flowering period progresses. They will grow more branches, buds, and flowers, and the plant will begin to produce more THC overall. The plants will take on a sort of cone shape that resembles a Christmas tree, and you might even start to smell a distinctive fruity or smoky aroma. Their pistils will change from their whitish color to a darker shade (generally brown, red, or orange); at that point, they should be ripe enough for picking. Even if you want to pollinate your female plants, you might consider removing the male plants post-pollination so that the females have more room to flourish.



Beautiful marijuana buds

The plants start to flower when the light and dark periods are both 12 hours long because they are genetically programmed to do so. If you plant outdoors (more on that later), you'll find that the plants will start to flower naturally when daylight begins to dwindle in the fall.

(Note: There is a section on harvesting and curing the plants at the end of this guide, after the section on outdoor growing, since it's the same process for both indoor and outdoor growing.)



Indoor Problems and Pests

For the most part, indoor growers won't have to worry about any diseases or pests plaguing their plants. But that doesn't mean it's entirely impossible. In general, microbial diseases are minimal because the microbes that affect plants usually don't exist in Europe or North America (where many of you are likely growing).

Nutrient issues occur, but those are from the plant receiving too many or too few nutrients. This can be remedied in a number of ways that are outlined in the "Indoor Vegetative Growth" section above.

Pests are really what you need to focus on preventing or eliminating if they make their way into your house. This is because, in nature, these pests would be mitigated by their natural predators, but in an enclosed system like the inside of your house, they won't have anything but you to stop them. Of course, the best option when it comes to these pests is always prevention. But some of the most insidious plant pests, like mites and whiteflies, are very difficult to detect. You can bring them in on your hands or clothes, or they might slip through cracks in your windows. It's also possible that the mites could have already been in your house to begin with. Many houseplants are resistant to these types of pests, but that doesn't mean that they aren't there; it just means that they don't hurt the houseplant.



White flies



Spider mites



Mealybugs



If you have a houseplant that's resistant to mites and other pests, it could already be infested with many of these creatures. You can test this out by placing a marijuana seedling in the pot with the other houseplant. If the seedling starts to show signs of drooping or a lack of vitality, or if the leaves start turning a whitish color, then you probably already have mites in your house.

Never use the same tools for your houseplants and your marijuana garden. If you have windows in the grow room, install a nylon mesh or wire screen to prevent pests from accessing your garden. Also, make sure that the soil you use is pasteurized and thoroughly sterilized so that it doesn't contain any larval eggs.

Pests can be devastating for your marijuana plants. If you suspect any intruders in your grow room, be sure to act immediately. There is a section on my website on **pest control** with pictures of every possible pest. Read it and learn how to identify any problems.

Eliminating Pests

If you still end up with an infestation of mites or whiteflies (or any other pests), then there are a few things you can do to get rid of them. Insecticides will work, of course, but many people don't want to harm their plants with the chemicals they contain. If the plants are otherwise healthy but you can see some significant deterioration of the leaves, then you might want to begin force flowering right away. If the pests only infected a few plants or a few leaves, you can simply remove the infected sections. Plants that are already in the flowering stage will likely survive any pests without a problem.



If the problem still persists, you might want to think about using an insecticide. Sprays that include things like pyrethrum, rotenone, and malathion are generally considered safe when used correctly. Just remember that you don't have to spray an entire canister on your plants to get the job done. Remove any affected leaves before spraying, and don't use any insecticide during flowering. The best part about these varieties of insecticides is that they degrade into safe chemical compounds, such as CO₂ or water, when they stop working. There are also natural solutions that you can make, but they aren't as effective.

A Few Notes about Indoor Security

Although most people grow indoors to avoid any security issues, there are still some problems that can occur if you're not careful. In many jurisdictions, growing marijuana is still clearly illegal, and, if an unfriendly snitch thinks there's reason to suspect that you are growing, you could wind up behind bars (or at least paying a hefty fine).

The first rule about growing marijuana is to never talk about growing marijuana. Even if you feel like you're friendly with your neighbor or your bank teller or an acquaintance, they might not be friendly with the practice of growing marijuana. Although it's natural for any gardener to want to tell everyone about their efforts, it's dangerous when the plant they're gardening happens to be illegal.





Keep the fucking police out

If you have a window in your grow room, concealing the marijuana plants won't be that easy unless your window isn't visible to your neighbors or anyone else from the outside. Also, if you leave the grow lights on at night, it might lead someone to suspect that something illicit is going on. To avoid that, you can buy a blackout curtain that you leave pulled down for most of the time you spend growing marijuana. A blackout curtain will also help make the flowering period easier because it ensures that no outside light will leak in.

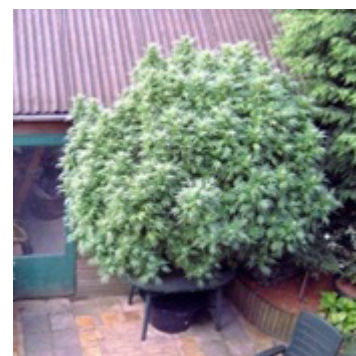
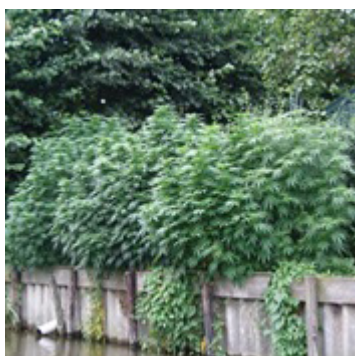
Sometimes your marijuana plants will give off a distinct smell that anyone will recognize as cannabis. It might be a relatively strong smell wafting out of any open windows. The scent might make your neighbors suspicious, particularly if they are not proponents of growing cannabis. In this case, you might need to keep your window firmly closed and install fans in the grow room (instead of opening the windows) to circulate the air.



OUTDOOR GROWING

Many growers prefer to grow their marijuana seeds outdoors because of the possibility of a better smoke, plus there is undoubtedly nothing more natural than growing your plants outside. Most of the environmental factors outlined above are provided to the plant via natural resources, saving you from having to create them. While indoor growing gives you a lot of control, outdoor growing lets the plants flourish to their fullest capacity.

The main problem with outdoor growing, however, is that the plants are visible to anyone who happens to have prying eyes. If you live in a residential neighborhood, you might be able to get away with growing your plants in your backyard, but you'll likely need to be somewhat paranoid about keeping the operation under wraps. Even then, you could still be caught, and the penalties for that are potentially severe.



2-pound marijuana plants

If you live in a secluded or wooded area and you own a lot of land, then it might be a little easier to grow your own smoke on your personal



property. For instance, if you live on ranchland (or you have access to a friend's ranchland), then you might be able to grow outdoors with minimal interference. This is really the ideal way to go about it because you can inspect the plants whenever you want without the fear of being caught. You can also avoid the hassle of having to deal with thieves looking to score your homemade bud.

Unfortunately, many people don't have access to secluded private land that wouldn't arouse suspicion from law enforcement or other individuals. Thus, if they want the best bud, they will have to employ a system known as "guerrilla farming." This means that you'll have to go to public lands that are somewhat off the beaten path to grow your garden. There are obvious dangers to doing this because anyone could happen to come across your garden and alert the proper authorities. It's also not uncommon for law enforcement to survey many public lands using helicopters or slow-flying planes. The police are equipped with infrared devices that can point out any irregularities in foliage. If the spot you planted your garden is in an open space, the plants will likely be clearly visible to anyone flying by. But, if you plant underneath some dense foliage, they might just blend in with the rest of the trees and shrubs in the area.

Soil

Regardless of where you're growing outside, good soil is imperative. But not every kind of dirt will be ideal for growing marijuana. It's always a good idea to test the ground soil that you're planning to grow in before actually using it. This is to ensure that it won't be too alkaline or acidic when the plants start extending their roots even deeper into



the ground. If the pH balance is too much in either direction then you might want to consider a new location or infuse the soil with some nutrients and fertilizers.

Many growers like to use composted material as a natural fertilizer. Anything that once was organic can be used as compost. This means that you can gather leaves, banana peels, and even dog droppings, and in a few months you'll have a nice, nutrient-rich fertilizer. Obviously, you can't just take the leaves or shrubs or banana peels and use them as a fertilizer if they haven't yet decayed. But virtually any decayed organic material works as a cheap fertilizer. If you want to get the pH to an acceptable level, use some of the techniques outlined in the "Soil Control" section above.



Plant in green areas



Make your own container



**Corn and marijuana
need the same soil**

You can also buy fertilizers. A fertilizer with an NPK ratio of around 5:1:1 (just like before) will be the best option. Any fertilizer that has more nitrogen than the other two nutrients will be ideal for most of the plant's life, up until flowering (when more phosphorus is ideal.)

Of course, if guerrilla farming is your preferred method of growing, then you won't really have these options at your disposal. In fact, unless you have a definitive location picked out months ahead of time, you won't really have the option of creating a more workable soil. You'll



just have to go with what you can find, as hiking in your own fertilizer could make it exceedingly obvious that you're growing something out there.

Sowing the Seeds

Many growers like to start out their seeds in rows created in the soil. You don't really need to bury the seeds very deep in the soil. In fact, some growers simply scatter their seeds on top of the soil to get them to germinate. This random seeding is called broadcast seeding.

A more effective way to sow your seeds is by using hills or mounds. For this method, the seeds go on top of the small mounds of soil. With this technique, you can plant outdoors even when the ground is somewhat wet. This is because the water is naturally going to drain off of the mound so the seed (and, later, the plant) won't be inundated. In either the hill or row option, try to ensure that the seeds have adequate soil coverage so that they can stay moist.



Sowing in rows



Broadcast seeding



Sowing on hills

Most guerilla farmers use broadcast seeding to limit any suspicion and because it's a lot easier. If you spend hours building rows or mounds, there is a strong likelihood that someone could happen to notice you. It's also rare to see any uniformity in nature. If your plants



are ordered in perfect rows, or they are all sitting atop a small mound of some kind, then any passersby (whether on the ground or in the air) is probably going to take notice of the anomaly. Scattering the seeds around definitely gives the area a look of complete arbitrariness, the way nature might have intended. The plants will blend in with all of the other scattered trees and/or shrubs and won't be easily noticed by anyone else.

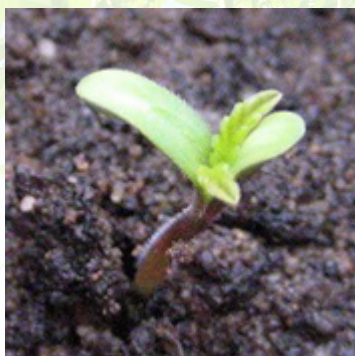
Unfortunately, broadcast seeding isn't the best way to ensure that your plants will germinate. If you place a layer of soil over your seeds and gently press them down into the soil with your foot, there's a better chance that the seeds will germinate. Many seeds, however, will never germinate or will simply die after becoming seedlings if you try to grow in this fashion. That's why using a large amount of seeds for broadcast seeding is crucial so that you are at least guaranteed some growth by the time they start germinating.

Germination

Just like with indoor germination, outdoor seeds require moisture to germinate properly. Adding too much water can be detrimental, but as long as the seeds are surrounded by at least some moisture they should start to germinate. Of course, this is easier if you built mounds or rows for the seeds, as they naturally maintain moisture.

Sometimes, the conditions outside are not conducive to germination or the subsequent seedling stage. If you live in an area where the temperatures remain relatively low well into spring then you may need to germinate the seeds indoors. To do this, just follow the instructions laid out in the indoor growing section on germination above. Then you can transplant the seedlings when the weather starts to improve.

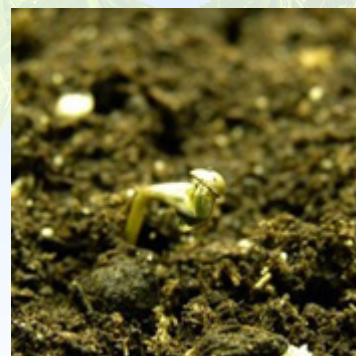




Outdoor germinating



Indoor germinating



Germinating in soil

Again, transplanting to a secluded location on public land is pointless at best and dangerous at worst. There's a strong likelihood that the plants won't survive the transplant because of all the stress they would be put under. There is also a strong likelihood that you could be caught because it would probably take more than one trip to get all of your plants in the right position. The whole germination process is difficult for guerrilla farmers, especially if there isn't a reliable source of water nearby. Hauling in your own water is challenging, but the soil needs to be moist for the seeds to germinate so it may be vital. If you're interested in learning more about this process read this article on **guerrilla marijuana farming**.

Weeding

As your plants start to germinate, it's essential to keep the area free of weeds. Avoid using any weed killers like Round-Up that might also affect your marijuana plants. Weeds are dangerous because they will end up taking a lot of the water and nutrients meant for your plants if you don't stamp them out quickly. The best way to get rid of weeds is by merely pulling them out by hand. Trying to kill them with any chemicals will only be bad for the plants that you are trying to grow to be big and strong. Naturally, before planting in an area you should pull out any weeds that happen to be there.



Light

The benefit of being in the great outdoors is that you don't really need to **worry about light** too much. The sun will provide all the light a plant could need and much more. There is no way to duplicate the sun's intensity, and it's just a better light source than anything you could produce artificially.

If you transplant your plants from indoor artificial light to outdoor sunlight, however, they could be shocked by the intensity. This would certainly not be an ideal way to start your outdoor growing experience as you might see the plants lose vigor and ultimately die. If you sowed the seeds outdoors in the bright sunlight, your plants will already be acclimated to the sun for the rest of their lives. However, when transplanting from indoors to outdoors, you have to ease them into it. At first, place the plants in a location that has shade for part of the day to ensure that the sun's rays hit them directly but for a shorter period of time. This is assuming you will leave them in portable pots rather than planting them straight into the ground. As they start to get used to the sun's rays, gradually move them more into the direct sunlight until they are receiving light all day. It shouldn't take more than 7 or 10 days to get the plants acclimated to the sunlight.



Huge outdoor plant



Marijuana plants in full sunlight



Grow in your garden



Light can also be a problem if something is blocking it from getting to your plants. If you live in a cloudy area, for instance, the plants might not be receiving enough direct light from the sun. You may have to bring the plants indoors at night and put them under some lamps, so they get a full dose of light for the day.

If you are guerrilla farming in a forested area, your plants might be at risk of having the light blocked out by taller trees in the area. Although the trees provide security and cover from any potential onlookers, they may also limit the amount of light that your plants receive. It will be difficult to transplant them once they are in the ground so you may just have to deal with the limited amount of light.

Some growers utilize the landscape to receive the most light. When planting on the slope of a mountain, make sure that you plant on the south side (if you're in the Northern Hemisphere). This is because the sun will go from east to west, but it will be in the southern half of the sky. If the plants are on the southern slope of the mountain, they will receive the most sunlight possible throughout the day.

Watering

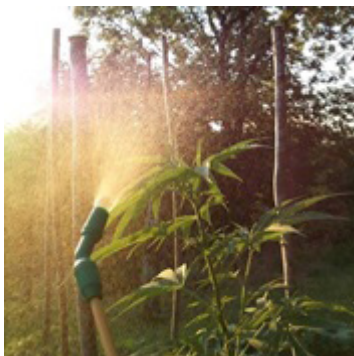
Watering your outdoor plants can be kind of tricky, especially if they are located in a relatively dry and arid place. If your plants aren't close to a hose then you'll have to devise a plan to get your plants as much water as possible. Obviously, early on, the plants won't need a lot in the way of H₂O but, as they enter into vegetative growth and start to get much larger, they will need more water. Large adult plants can consume up to a gallon of water per day. This doesn't mean that you'll have to water the plants with a gallon of water every day because the



soil should retain some of the water from previous waterings (or even from rain).

If your plants are on private land that you have access to, there is no shortage of unique techniques that you can use to get water to your plants. For instance, you can fill buckets up with water and transport them by truck to the grow site. Try to avoid oversaturating your plants with water by dumping too much water on a single one.

Other growers set up a drip method of watering with something like a squeeze bottle that has a permanent drip. This technique allows the growers to avoid having to water the plants every day while still keeping the soil moist on a continuous basis. Although it is gradual by nature, the drip method keeps the plants relatively healthy and doesn't flood them with too much water.



Watering marijuana



Grow near water sources



Marijuana loves water

Of course, you might live in an area where cannabis can grow naturally without the use of any extra water on your end. This is ideal for guerrilla farmers who likely won't be able to check on their plants on a daily basis. If you are a guerrilla farmer and you live in an area where the weather is often hot and dry, then you might need to keep a firm watch on the plants. Hauling in your own water will be challenging on a number of levels, and it's better if you can find a nearby lake or stream that can provide water for you naturally.



If your plants are underwatered they will likely start wilting, but be aware that plants will naturally start wilting in the summer as a response to the heat of the sun. The best way to check if your plants are getting enough water is to dig about 6 inches into the soil, making sure not to cut any major roots on the way down. If the soil there is still cool and moist, the plants should be fine. Many types of soil are adept at holding water for long periods of time so that there is essentially a reservoir of water stored within it.

If at all possible, you might want to water your plants with a nutrient solution about once every couple of weeks. As long as the nutrient solution has a higher concentration of nitrogen than phosphorus and potassium, it will be good for vegetative growth. For flowering, use a solution that is higher in phosphorus than either of the other two nutrients. This should be done when you water the plants.

Temperature, Weather, and Air

Obviously, temperature is one of the major issues when growing outdoors. There's not a lot you can do to keep your plants warm enough or cool enough if there are weather problems. If your plants are still in pots, then you can move them indoors to avoid any excessive cold at night. When the temperature is particularly hot outside, the roots can start to sort of "boil" in the soil. Keeping them cool with extra water will help ensure that the plants don't begin to lose vigor.

Of course, being outdoors leaves your plants open for a large variety of other weather problems. Wind, rain, and snow (depending on where you live and when you plant) can all be problems that will hurt your plants. For the most part, high winds won't have much effect on healthy cannabis plants. They generally grow firm stalks that won't



need any exterior support to stay standing. Indeed, most high winds will cause some tiny cracks in the plants' stalks, but, if they are healthy, they will heal themselves quite easily.

If the plants are suffering from nutrient deficiencies, however, they may have a hard time recuperating. This is also true if they are top heavy and therefore susceptible to more angled bends of the stalk. In this case, you might think about staking the plants so that they don't experience any irreparable damage. If you know a storm is coming, it's best to find your weakest plants and make sure they have some exterior support to mitigate the damage that the storm might cause.



Not enough rain



Too cold



**Too much rain,
bad drainage**

To do this, simply place a stake about six inches from the base of the plant, and then tie the plant and the stake together with wire twists or string.

For guerrilla farmers, it's a good idea to avoid planting in areas that are prone to mudslides. But not every slope is going to be an obvious mudslide area. A good indication that an area won't be adequate for your plants is if there aren't any other small plants growing there. If all you see is sturdy trees or shrubs, then the slope likely does not support small vegetation. Not paying attention to these signs could wipe out your entire crop during one freak summer storm.



In terms of the air quality that your plants will experience, there's nothing better than the great outdoors. Your plants will get all the fresh air they need and plenty of CO2 to stay healthy.

Outdoor Flowering

For the most part, flowering outdoors will require no input from the grower. Most plants will start adjusting to the changes in the daylight hours and begin the flowering process on their own. The days will naturally start to get shorter, which will trigger the plants into flowering organically.

For some growers, however, this will not be the ideal circumstance. Sometimes you don't want the plants to enter flowering, and sometimes you want them to enter it earlier. For instance, if the weather is still nice and you want to eke out all the vegetative growth you can in your plants, you'll want to delay flowering as long as possible. By that same token, if you know that the weather will soon become exceptionally cold or at least too cold for the plants to survive, then try to make sure that they start flowering sooner than they naturally would.

For growers that have access to their plants, both of these options are possible. If you want to delay the onset of flowering, it merely takes a little light during the night. You can accomplish this with a high-powered flashlight shining on the plants once every couple of hours or so for about 10 minutes during the night. This will adequately mess with the plants' natural inclination to start flowering and they will stay in vegetative growth for the time being.





Outdoor Marijuana Flowers

Obviously, if the weather starts to get cold early where you live, try to ensure that your plants start flowering as soon as possible. But outdoor plants offer certain challenges to this goal. If the light to darkness period isn't yet 12 hours to 12 hours then you'll need to make that happen on your own. Using a polyethylene sheet will help block out any sunrise or sunset light so that you can get the required 12 hours of darkness. For instance, if you know that your area is going to get exactly 13 hours of sunlight during the day and that sunset is at 7 PM, then place the sheet over the plants at 6 PM and remove it at 6 AM when the sun rises. After doing this for about 1 to 2 weeks, the plants should start to flower, and you can begin harvesting.

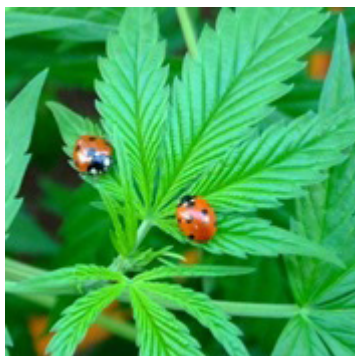
When it comes to manipulating the flowering period, guerrilla farmers are kind of out of luck. They will be at the mercy of the local weather in the area and won't have a lot of say in the matter. Just trust that nature will work its magic and find a way to give you some excellent smoke.

Pests, Predators, and Other Problems

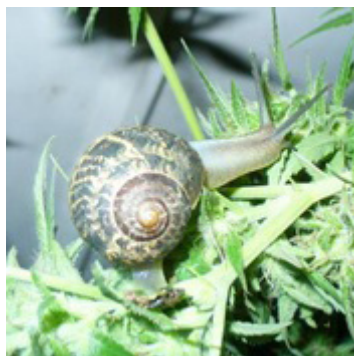
You might expect outdoor plants to fare much worse than plants grown indoors when it comes to pests. That's true, but because the



ecosystem is often self-regulating, there are many tricks to get rid of unwelcome visitors. For instance, even if a few bugs start munching on the leaves of your cannabis plants, it's likely that they will be held in check by any of their natural predators. Spider mites, aphids, whiteflies, and mealybugs are all common pests that many growers have to deal with both indoors and out. The plants are in the most danger when they are young and not well-developed. A single meal by a group of mites during a plant's seedling stage could cause some irreparable damage.



Ladybugs



Snail



Hummingbird

As the plant ages, however, it will start becoming less susceptible to insect damage. This is mainly because these insects will be taken care of by natural predators before the plant incurs much damage. If pests are a problem, there are a few options you can try to chase them away from your plants.

Companion Planting

Although the THC that marijuana produces is supposed to act as a **natural repellent**, it is sometimes not very helpful for getting rid of certain insects. Many outdoor growers have taken to planting companion plants that work to repel pests. In general, you must plant the companion plants near the actual marijuana plants. The most



effective repellent plants are those that have strong scents like herbs, spices, and mint.

Garlic cloves are probably the best repellents because they ensure that a wide range of pests stay away from your garden. Aphids, spider mites, potato bugs, many types of beetles, and a wide range of other pests will be repelled by garlic cloves. Even rabbits and some deer will be put off by the scent that garlic cloves produce.



Garlic



Other plants as camouflage



Mint

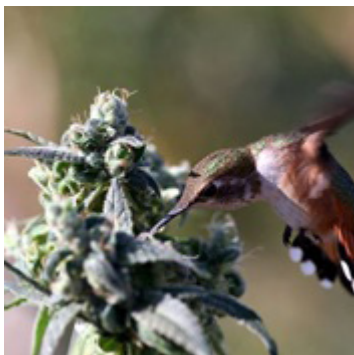
Mint is particularly effective at controlling flea beetles if you've got an unusually large infestation of them. They also repel a wide variety of other insects and even mice.

Geraniums and marigolds can also be interspersed throughout your garden to provide an even larger range of protection. Geraniums can even be placed outside in pots so that you don't have to go through the hassle of actually planting them in the soil. Marigolds are some of the fastest growing flowers, and they will produce a strong scent within a few days.

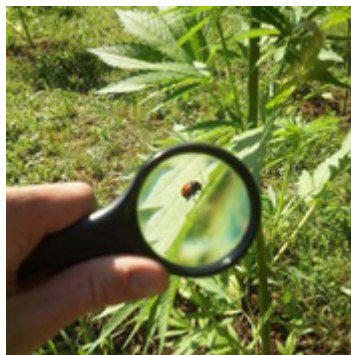


Natural Predators

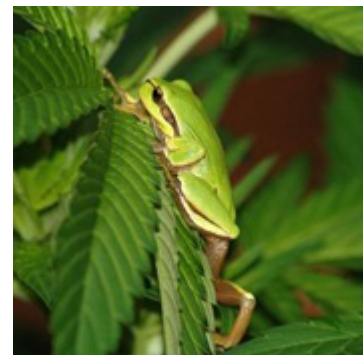
It's also possible to purchase the natural predators of these pests and place them in your garden. Other insects, such as ladybugs, have no interest in eating a marijuana plant, but they do have quite an appetite for aphids and insect eggs. Both praying mantises and lacewings also provide you with a natural way to rid yourself of any unwanted pests. All of these are sold commercially.



Birds eat insects



Ladybugs eat mites



Frogs love larvae

Several birds, including blue jays, robins, martins, chickadees, and others, are adept predators when it comes to killing off marijuana-loving pests. To attract these birds, some growers have installed birdhouses, feeders, and pools of water. It's also not a bad idea to let a few chickens, ducks, or geese run through the garden every once in a while as the plants grow larger. These birds will take out many pests along with a number of different weeds -- and you won't have to do any work. Other insect predators include frogs, toads, snakes, turtles, and lizards, which should all be encouraged to take up residence in your garden.



Other Repellent Methods

Many gardeners employ the use of some ingenious homemade sprays or other solutions that are remarkably effective. It's possible to use a concoction composed of liquid garlic extract and regular soap. You can also add cayenne peppers, onions, or almost anything else that is safe for the marijuana plant and also pungent enough to repel many different kinds of pests.

If you really want a cheap solution, you can literally just stomp on the bugs or squeeze them to death. It's best to do this in the early morning when the bugs are moving much slower in general. If anything, it gives you something to do before you head off to work or do whatever else you had planned for the day.

Many growers like to place barriers around their garden. This is particularly effective for guerrilla growers because it's hard to notice and doesn't take a lot of time to prepare. To do this, create a barrier about 6 feet away from the plant using powdered potash (wood ash). You can even sprinkle some of the wood ash onto the leaves to keep flying bugs at bay as well.



Homemade spray



Greenhouse keeps out many bugs



Hidden growsite in the woods



But insects aren't the only pests that can cause problems. This is particularly true if you live in an area that has a large quantity of omnivorous or herbivorous mammals or birds. Deer, rats, rabbits, cows, and other mammals are prone to finding ways to get to your marijuana plants. When the plants are young, it's common for deer to come by and virtually decimate the crop. As the plants age, however, animals aren't as attracted to them.

For large mammals, the best repellent is an equally large fence, but many growers don't have the luxury of being able to build a fence. Thus, other methods are required to force those mammals away. Many growers have started purchasing the urine of certain predators. For instance, if a group of deer constantly messes with your garden, you might think about purchasing some bear urine and placing a perimeter of the stuff around the plants. When the deer catch the scent, they will inherently want to avoid the area from here on out because they recognize the smell as something predatory. This can work for smaller mammals as well. As long as you purchase the urine of one of the mammal's main predators, they will stay away. A rabbit might be repelled by the scent of fox or wolf urine. You can find these repellents at many outdoor shops.

In general, birds don't represent much of a threat to any marijuana garden. When you have just planted the seeds, however, crows, sparrows, and starlings can be potentially harmful to your crop because they like to steal the seeds. This could be a risk until the plant germinates and becomes a seedling. To avoid any of your seeds being taken prematurely, you could use plastic netting or even a scarecrow to keep the birds away. After the seeds have germinated, you really won't have any problems with birds. They don't really like the taste of the leafy marijuana plant. As mentioned previously, birds should

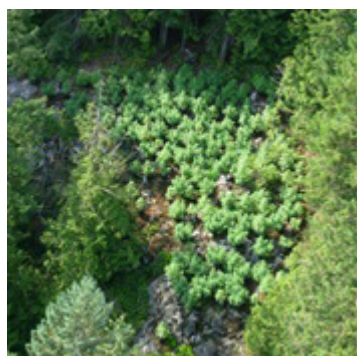


be encouraged to nest in your garden because they are the natural predators of other insect pests.

Some Notes about Outdoor Security

Obviously, the difference between growing outdoors and indoors is that outdoors your plants are basically wide open to any onlookers who happen to pass by. If you're on public land (or even private land), there's always a chance that your plants could be found by either law enforcement or thieves. The only way to really prevent yourself from getting caught is to cover your tracks meticulously.

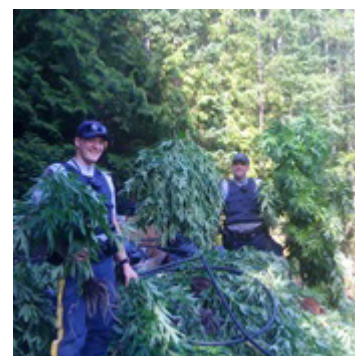
If you're growing on public land, be sure to find a place that will be difficult to discover by land or air. Try to find an area where you know that fly-bys are rare or non-existent. Also, don't plant your garden in an area that is visible from any trails or walking paths. A random citizen could report your crop to the police and, even if you don't get arrested, you'd likely lose your garden. It's always a good idea to be as clandestine as possible and remain out of the sight of any onlookers (for instance, a park ranger) when you go to the garden. If you can find a place that is secluded but not too hard to reach then you will be much better off when taking care of your plants and ultimately harvesting them.



Outdoor grow site



Police helicopter patrol



Rangers by foot



If you have to make a relatively long hike to a place like a clearing in the forest, then it's important to take 3 or 4 different routes. Even an amateur tracker will start to notice the path you make when walking to your garden if you only have one entry point. This path will be obvious to any thieves or other people who know what they're looking for. You should always try to leave your garden in a different way than you came in. For instance, if you are planting in a park with a number of different trails, it could be prudent to enter the park on one trail, leave that trail to tend to your garden, and then leave the garden to get on another trail altogether. Always keep a map of the land handy in the event that you get lost. If it's possible, try entering the public land from inconspicuous places (for instance, areas that don't have trails).

If growing on private land, make sure you do everything in your power to keep the plants from being seen. This includes pruning and trimming them so that they don't invite any suspicion from passersby or neighbors. Plants grown outdoors can often reach incredible heights that will make them relatively obvious to anyone looking. For instance, if you're growing in your backyard, a six-foot monster plant is going to catch the eye of any neighbor relatively quickly. Keeping the plant pruned will limit its size and detectability and might also produce a higher yield in the end.

Some growers have considered growing their crop on land adjacent to their own that is owned by someone else. For example, if you live next to a cornfield, you might think it would be advantageous to grow out there. Unfortunately, it's hard to predict how frequently the landowner inspects their land or if any flybys are performed in the area. If you get caught, expect to be hit with more than a trespassing charge.



It should also be reiterated that you should never talk to anyone about growing marijuana. Even if your plants are heavily secluded and almost impossible to find, don't tell anyone.

Harvesting

Indoor and outdoor harvesting are basically the same thing except you have to bring your harvest inside if growing outdoors. If the plants are on private land where you can just pull them out of the ground and bring them in your house then you shouldn't have any trouble. Guerrilla farmers, however, will probably have to hike in to retrieve their plants and then hike back out unnoticed. Of course, this is generally not that easy to do and may require the help of a friend, depending on the size of the plants and the overall size of the crop. If at all possible, try doing this during the night or in the early morning to avoid any chance of people seeing you. Even if you conceal the plants in bags, any onlookers will reach some obvious conclusions.

In any event, taking a few leaves and shoots before the actual harvest time is one of the more prudent decisions you can make. This essentially ensures that you'll at least get something for all your efforts if your plants get stolen or noticed by law enforcement. For indoor growers, it's always good to sample a little bit of the smoke beforehand. The leaves and shoots during vegetative growth will actually be rather potent and will already provide you with a good smoke.

The right time to harvest the plants won't always be apparent. You don't want to harvest too early, and you certainly don't want to harvest too late. In either case, the THC and other cannabinoids on the plant won't be nearly as concentrated as you might like. Obviously, if you want sinsemilla buds, the male plants must be harvested early so they



don't pollinate the female flowers. If you remove male flowers early, you won't really be losing that much in terms of potency or yield. For the most part, male plants don't produce the highest quality smoke anyway. Still, if you want to avoid pollination, you should get them out as soon as you determine the sex.



Not ready, white pistils **Be careful during transport** **Ready, many red pistils**

If you do want to pollinate your female seeds, then you should just leave the males in the soil so that they can flower and produce pollen. This will keep you from having to pluck out the males prematurely, and it will also ensure that you will have seeds for next year's crop. When it comes to pollinated female plants, you won't want to pull them before the seeds have had enough time to mature. Many growers start to notice the telltale signs of high THC production and increased flower and bud growth, and they might think it's a good idea to pull out their female plants. But, if you pull the plants out too early, the seeds might just be inactive and won't germinate next season. You can investigate the seeds by opening up their sheaths or bracts and seeing if they have achieved the marbling brown color associated with maturity.

Of course, sinsemilla plants don't have to rely on seed maturation for them to be viable for harvesting. But in general, these plants have a longer flowering period. In fact, they might bloom for 4 to 5 weeks with new growth happening almost instantaneously. The new growth will



be sort of a boon to your overall yield, but you should wait until there is a noticeable decline in flower production. This will generally happen in the fourth or fifth week of blooming. When you notice the decline, don't start to harvest immediately. Wait about a week after the decline starts before you start harvesting sinsemilla plants. This is when the THC will be at its highest, and the smoke will be the most potent. If you allow the plants to grow more after this point, they might slowly get a bit larger and produce a few extra buds, but the THC won't be as potent because it will have started to degrade.

To harvest the plants, all you'll have to do is gently pull them up out of the soil. To facilitate this process, you might want to wet the soil beforehand. Avoid bending or cracking the plants as you pull them up, as it makes them harder to deal with. If your plants are in pots you can simply pull them out or even dump the pot and all the soil out.

There are many different techniques of harvesting and transporting marijuana, and I'm always interested in your story. You can leave a comment about your methods on this **harvesting marijuana** article.

Post-Harvest Activities

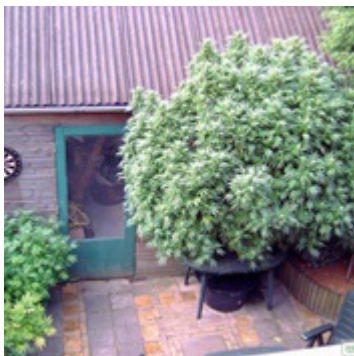
When you finally harvest, the first thing you should do is strip the fan leaves off of the plant. This is because they are less potent than the colas and they often don't cure as well as the other parts of the plant. That doesn't mean that they can't be used, however. In fact, fan leaves are known to have a somewhat high concentration of THC, especially after they have just been pulled.

Once you've done that, you can start grading and manicuring the plants. Grading simply involves separating the plants by their particular



sex, strain, and anatomical part. For instance, you might place all sativa-dominant, female, top colas in the same area. Most growers like to hang their plants upside down from a wire, if only because it's considerably easier than doing anything else. Manicuring involves taking any excess leaves from around the colas so that the plants will dry quite easily.

After all the plants are graded and manicured neatly, you can start curing them. Curing is a process that is meant to bring out the best flavors and tones, but sometimes it can actually decrease the amount of THC substantially if you do it wrong. Sinsemilla buds often don't require curing because they are potent enough as is.



Ready for harvest



Cut branches



Hang upside down

The most common way to cure a plant is by air curing. It involves hanging the plants upside in an unventilated room. You want the temperatures to be relatively hot, so, if you can place the plants in the sun, the curing process should go off without a hitch. The plants will start to lose color and become pale, at which point you should open the ventilator or window to slow down the curing process. The entire length of curing might take you around six weeks to complete. If you are having relatively overcast or wet days or the room isn't staying near 90°F, then you could be at risk of your plants developing mold. This is something you desperately don't want to have happen. To prevent



this, you might want to introduce a heater of some kind to keep the temperature as high as it can go.

Flue curing expedites the process of curing by adding an external force that works to heat the plants faster. You can place the plants in a water-tight box that you then place into a pool of water (generally, a fish tank). Then, heat that pool of water to about 90°F consistently. When the plants start to lose their green color, turn the heat up to about 100°F. When all the green is sapped out of the plants, turn the heat up to 115°F. This process will also dry the plants, but make sure to turn the heat down as they start to dry; otherwise, they might end up being brittle. This process generally only takes about a week to complete.

Sweat curing is a method used primarily in Colombia to get the plants to cure within about 5 days. It generally involves stacking branches and colas about 1.5 feet high and 2 square feet minimum. The microbial action works like a fermentation process in the same way that compost starts to heat up. The plants will start to lose color little by little. You should remove the plants that have lost the most color each day. To avoid any mold or rot, place paper towels, cotton sheets, or rags in between each of the plants. The rags will absorb any excess moisture and facilitate the curing process.

Drying

At this point, you should start drying your plants. Drying is a necessary activity, particularly if you want to store your bud for later use. It eliminates the risk of incurring mold and also ensures that it lasts a long time. Most growers use a slow drying method that simply involves hanging the plants upside down and letting them air dry naturally.



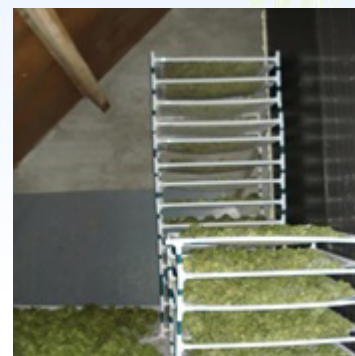
This usually takes about two weeks to complete. Of course, they will also start to cure a little bit during this process which may limit the potency somewhat.



Drying outside



Drying inside



Drying in nets

Fast drying techniques include using the oven, microwaving, and even using a skillet. Most people will want to test out their smoke relatively quickly, and, even though these methods might produce a harsher taste overall, they will still give you the ability to smoke some bud soon after harvesting. It should be noted that you don't want to dry your entire harvest using one of these fast-drying methods. In fact, it might be more prudent to dry the plants using a heater to facilitate the slower drying process. In any event, it's important not to leave marijuana in the oven or skillet for too long. Keep it in the oven for about 10 minutes at a temperature of 150 to 200°F. Don't be careless or you could end up charring your bud entirely.

Storage

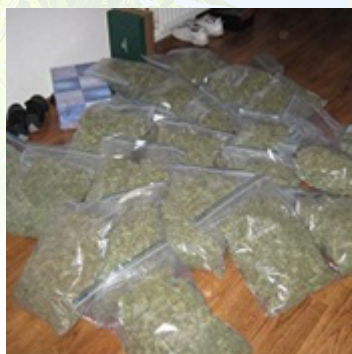
Storing your bud is the best way to ensure that it lasts you until at least the next harvest. Many growers simply place their dried bud in a dark (usually glass) container and then put that container in the refrigerator or freezer. Light and heat are two of the major things that will degrade



THC, so if you keep the storage area dark and cold, you will still be able to enjoy your smoke well into the future.



Airtight jars



Ziplock bags



Compressed blocks

It should also be noted that storing your entire crop in one space is a recipe for disaster. Although it might be more convenient to do it that way, you still run the risk of incurring mold. If even just one portion of one plant stayed moist, you could end up ruining the entire crop with mold. That's why it's important to portion your harvest so that you don't run into a disaster like that.

After that, you can always get ready for next year's crop by tilling some soil or inspecting your seeds. Of course, you could also just sit back, relax, and enjoy the fruits of your labor for a while. Hopefully, this Grow Bible helped you through the process of growing your marijuana crop, and it will continue to support you as you keep growing for years to come.



EPILOGUE

Thank you very much for reading this grow guide. I hope this information was useful and helps you grow higher quality marijuana and increase your yield. As you know, there are hundreds of marijuana growing-related articles on my website. You will also find an active marijuana **grow support forum**, moderated by expert marijuana growers.

If you are looking to buy viable quality marijuana seeds, visit my **seed shop** and read some of the reviews. We ship our seeds worldwide and guarantee arrival and germination.

I'm always looking for growers who can help build the website by writing articles, leaving comments, becoming a moderator on the forum, or telling their friends about us. So don't be shy and **leave me a message** if you want to contribute.

Happy growing,

Robert

Robert Bergman

I ♥ GROWING
MARIJUANA





ILGM PLACES OF INTEREST

- ▶ [Blog](#)
- ▶ [Grow Guides](#)
- ▶ [Seed shop](#)
- ▶ [Grow Support Forum](#)
- ▶ [Bud of the Month contest](#)
- ▶ [Robert's Harvesting Mini Guide](#)
- ▶ [ILGM Merchandise](#)
- ▶ [Sales support](#)
- ▶ [Bitcoin guide Get 10% off your order](#)
- ▶ [ILGM Affiliate program](#)
- ▶ [Bergman's Lab Professional Grow Course](#)

