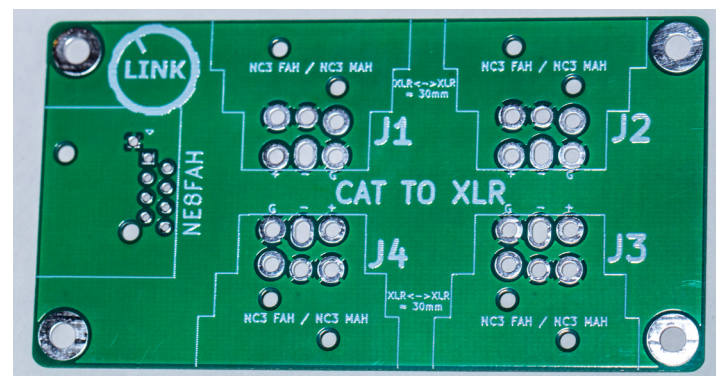
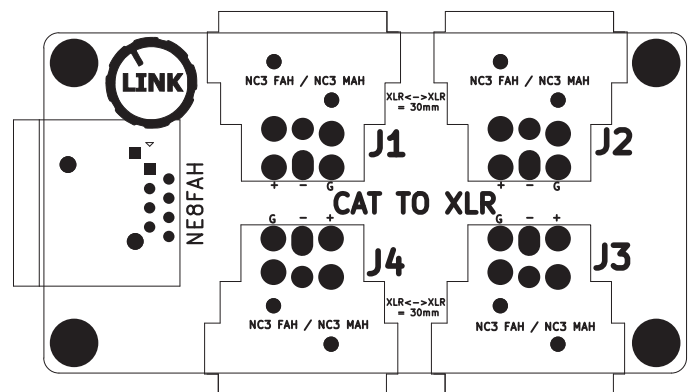


CAT TO XLR

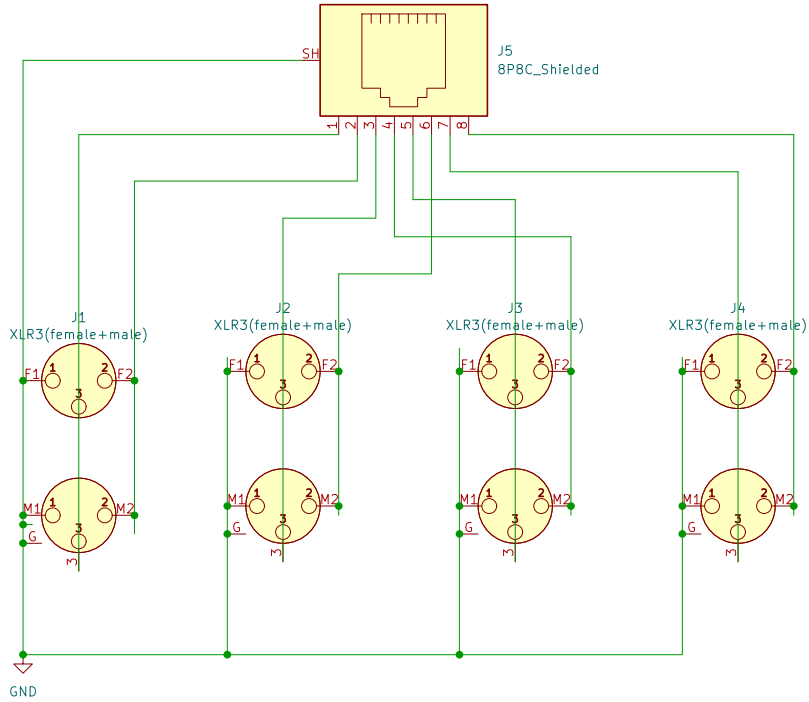
Let me introduce this Mini Project. It's basically a simple CAT EXTENSION. The main idea is to extend with a CAT5e cable 4 Microphone cables. A CAT5e Cable basically consist out of 4 twisted pairs and a GND Connection. So in our case all of these Microphone cables share the same GND. The Normal Configuration would be - One PCB 4 XLR Female, Second PCB 4 XLR Male. In that Case each Connector is connected with the corresponding on the other side. So J1 is connected to J1. We designed the PCB in a way you can add Female or Male XLR Connectors on all positions. If you want to mix the way signals will run trough the cable, it's totally your decision. We have designed this Project in Business Card Format 85x55mm. In this Sheet you get Schematic, BOM and Overlay. In the Future we will add 3D Files for printing your own case with a 3D Printer. Have Fun!

PCB layout for reference



DISCLAIMER: Proceed at your own risk. I am not liable for any damage, harm or loss of any kind resulting from the assembly and/or use of this PCB set. Safety provisions should always be exercised whenever working with any electronics. The following instructions are guidelines only. I can make no guarantee of the accuracy of contents contained within this document.

Schematics



Bill of Materials (BOM)

| | | | | |
|---|-------------|--------------------|---|-------------------|
| 1 | J1,J2,J3,J4 | Neutrik_NC3FAH-MAH | 4 | XLR3(female+male) |
| 2 | J5 | Neutrik_NE8FAH_ | 1 | 8P8C_Shielded |