



SHARM EL SHEIKH LAKE VILLAS AND CHALETs



SHARM EL SHEIKH

On the coast of the "Red Sea" and 500 Kilometers from Egypt's capital is the largest city in the south of "Sinai Peninsula", a recreational safe haven for all who makes it a destination.

Described as the "City of Peace" with an inevitable sensation of love, where all foreign and domestic individuals relish their stay. Our Villas and Chalets are 10 minutes away from the city's International Airport.





Located on the southern tip of Sinai Peninsula overlooking the Red Sea, Sharm El Sheikh is a recreational haven for holiday and scuba diving seekers. It is the largest city in Sinai with modern amenities and is well connected to the Egyptian Capital, Cairo

Described as the City of Peace, Sharm El Sheikh has an inevitable atmosphere of tranquility and charm, where all foreign and domestic individuals relish their stay.

Lake Villas and Chalets are ten minutes away from Sharm El Sheikh International Airport. The site benefits from wide views of the Red Sea and stepped plateaus.



QUALITY - TRUST - COMMITMENT

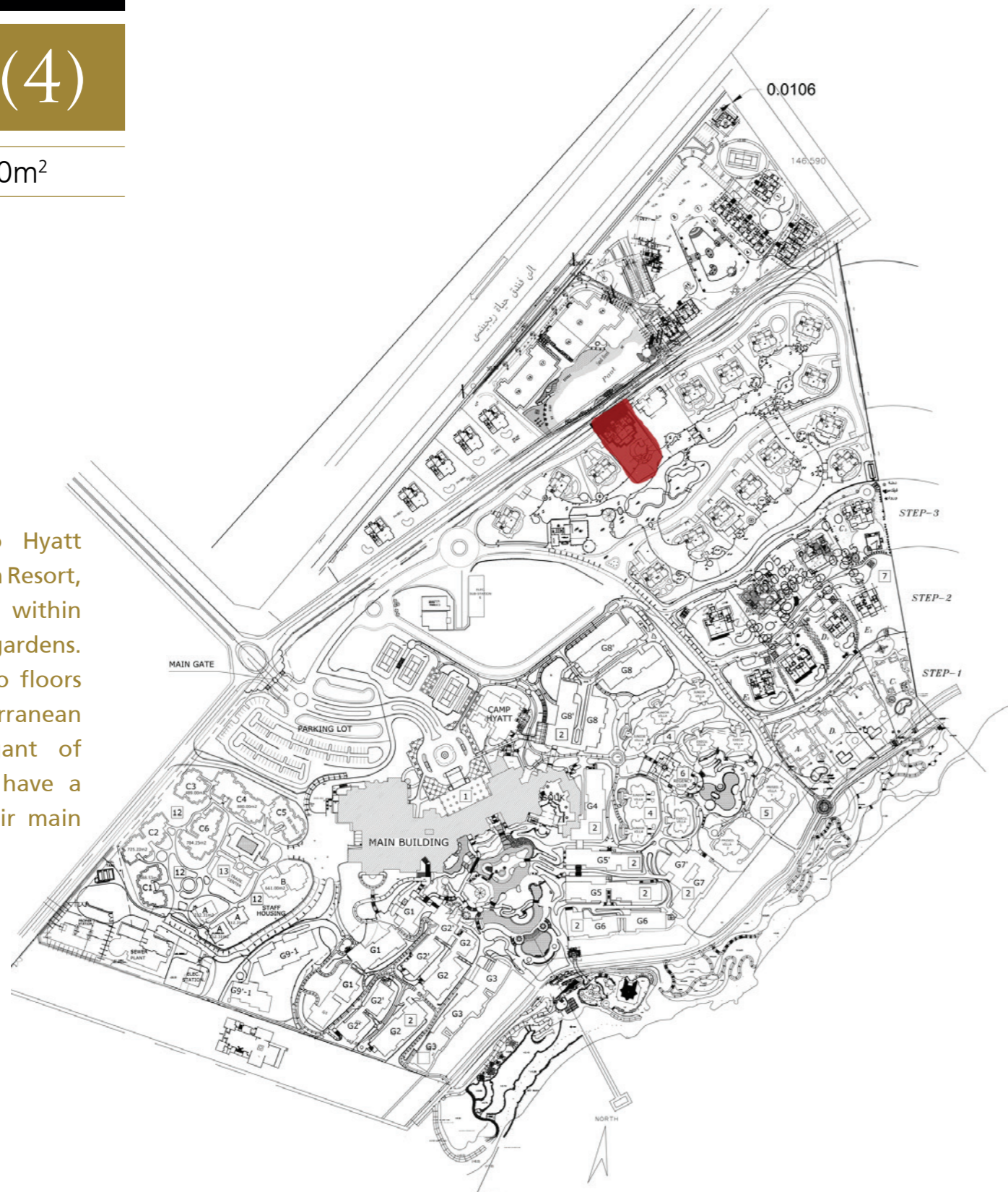
RAMW is a well established Egyptian group of companies with more than 50 years of experience in construction, real estate, and hospitality development. The company has expanded over the years to address the specific needs of the domestic and international markets.

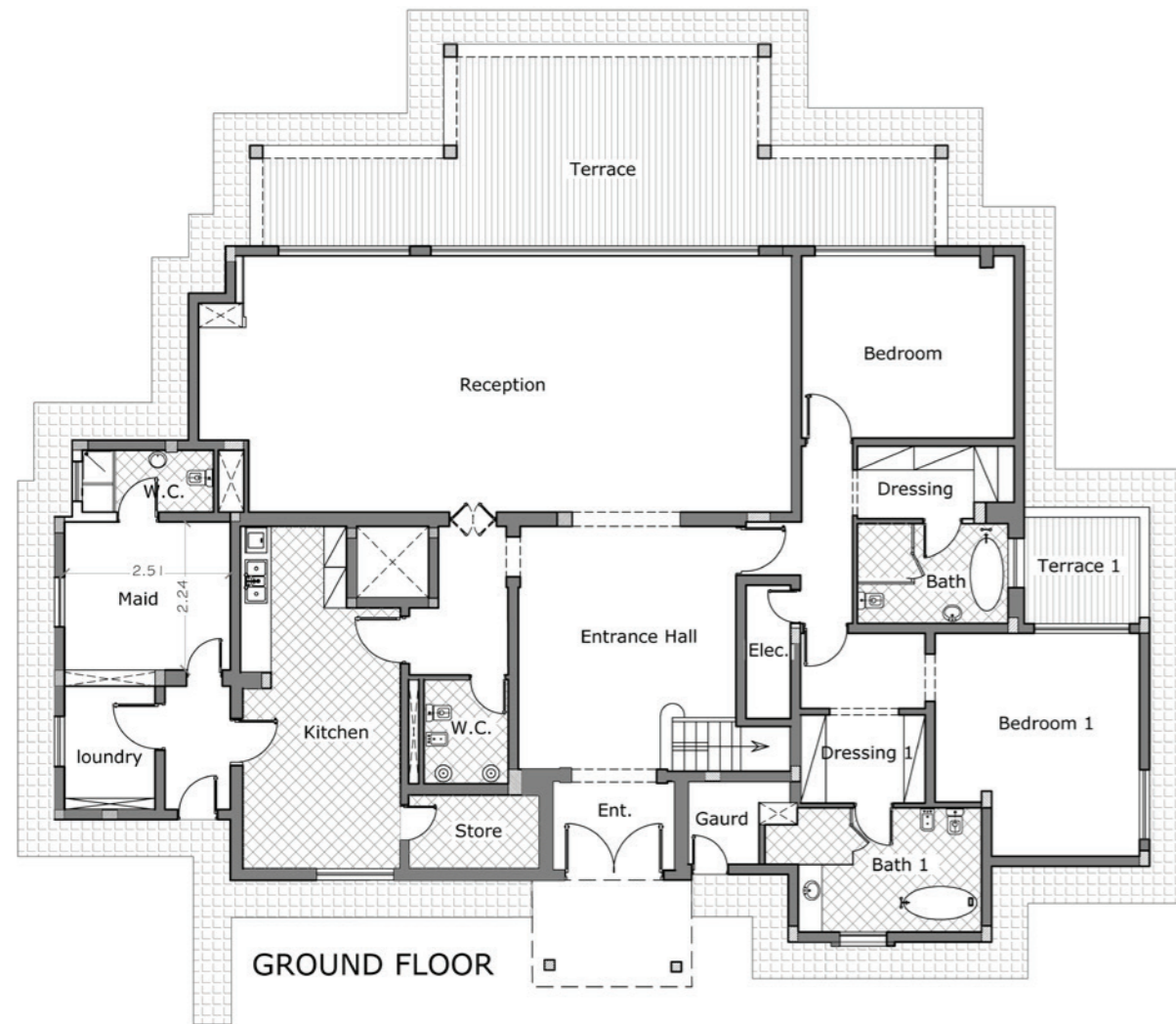


VILLA (4)

Net Area 2160m²

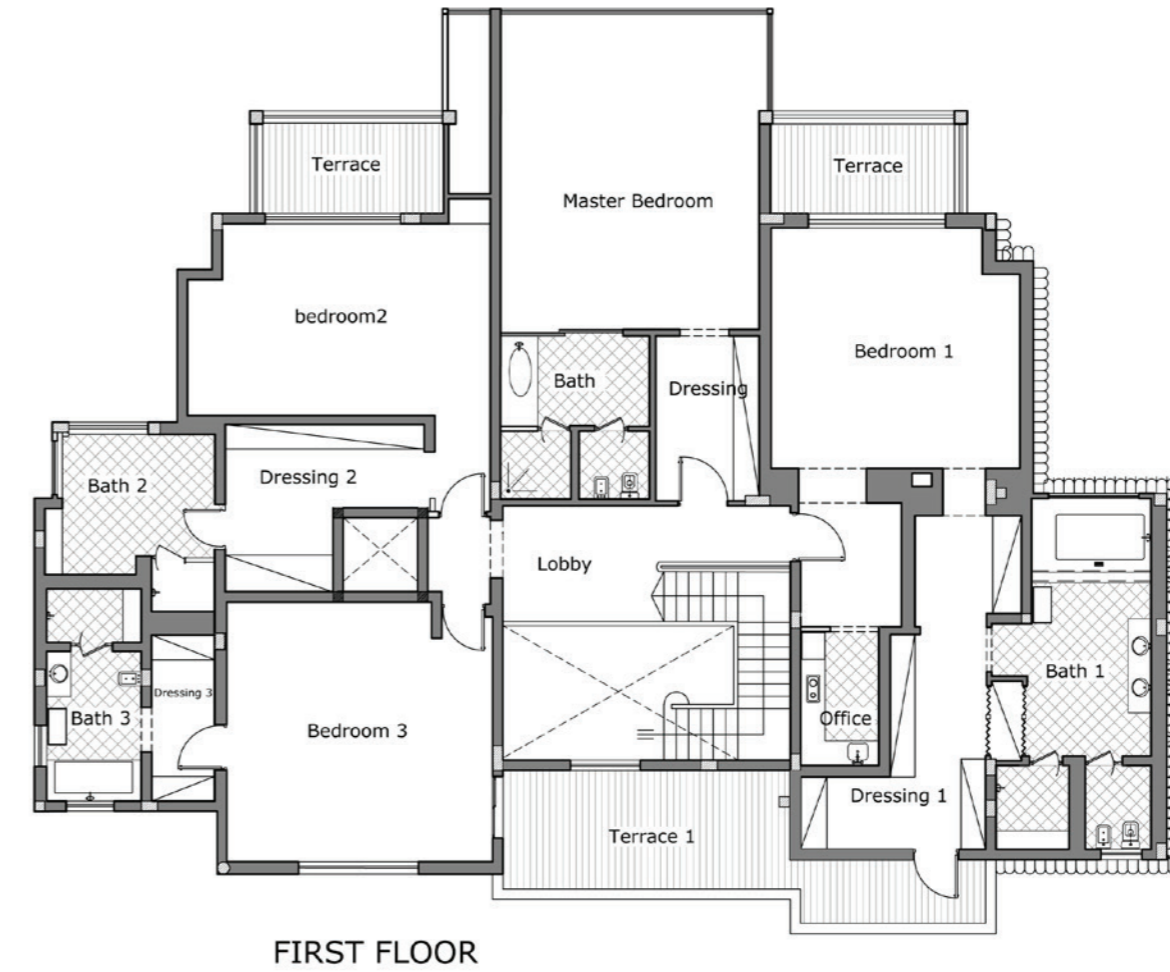
In close proximity to Hyatt Regency Sharm El Sheikh Resort, Lake Villas are nestled within lush-green landscaped gardens. The Lake Villas are two floors with luxurious Mediterranean architecture and elegant of finishings. Lake Villas have a full sea view from their main gardens.





Space	Dimensions (m)
Reception	13.78x6.46
Entrance Hall	6.11x5.48
Ent.	2.90x2.51
Bedroom	5.24x4.43
Dressing	2.93x1.83
Bath	3.80x2.51
Bedroom 1	5.42x5.14
Dressing 1	3.20x2.22
Bath 1	4.38x2.97
Kitchen	8.62x3.96
Store	3.29x1.86
W.C.	2.62x2.12
Terrace	16.92x3.81
Terrace 1	2.96x2.81
Maid	3.65x2.90
Maid w.c.	3.18x1.57
Laundry	2.82x2.35
Guard	2.22x1.79
Elec.	3.36x1.12

Ground Floor Total Area
471 m²



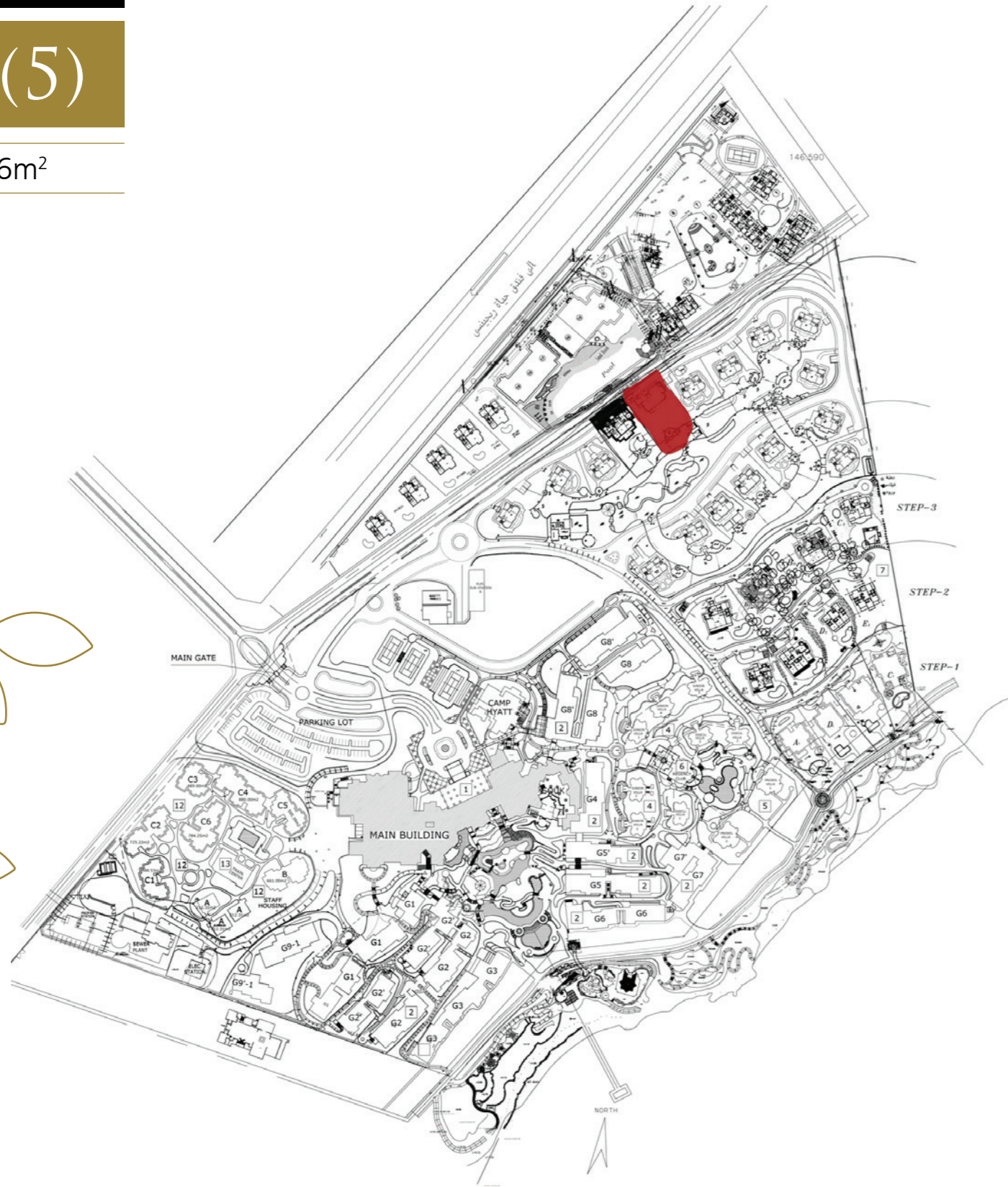
Space	Dimensions (m)
Master Bedroom	7.40x6.27
Dressing	4.01x2.52
Bath	3.97x3.62
Bedroom 1	6.05x5.85
Dressing 1	8.01x1.74
Bath 1	8.54x3.68
Bedroom 2	6.89x4.47
Dressing 2	4.85x4.07
Bath 2	3.71x3.38
Bedroom 3	6.38x6.27
Dressing 3	4.04x1.44
Bath 3	5.10x2.30
Terrace	2.69x1.31
Terrace 1	4.35x1.73
Office	3.26x1.90
Lobby	7.00x2.82

First Floor Plan Total area
467.00 m²



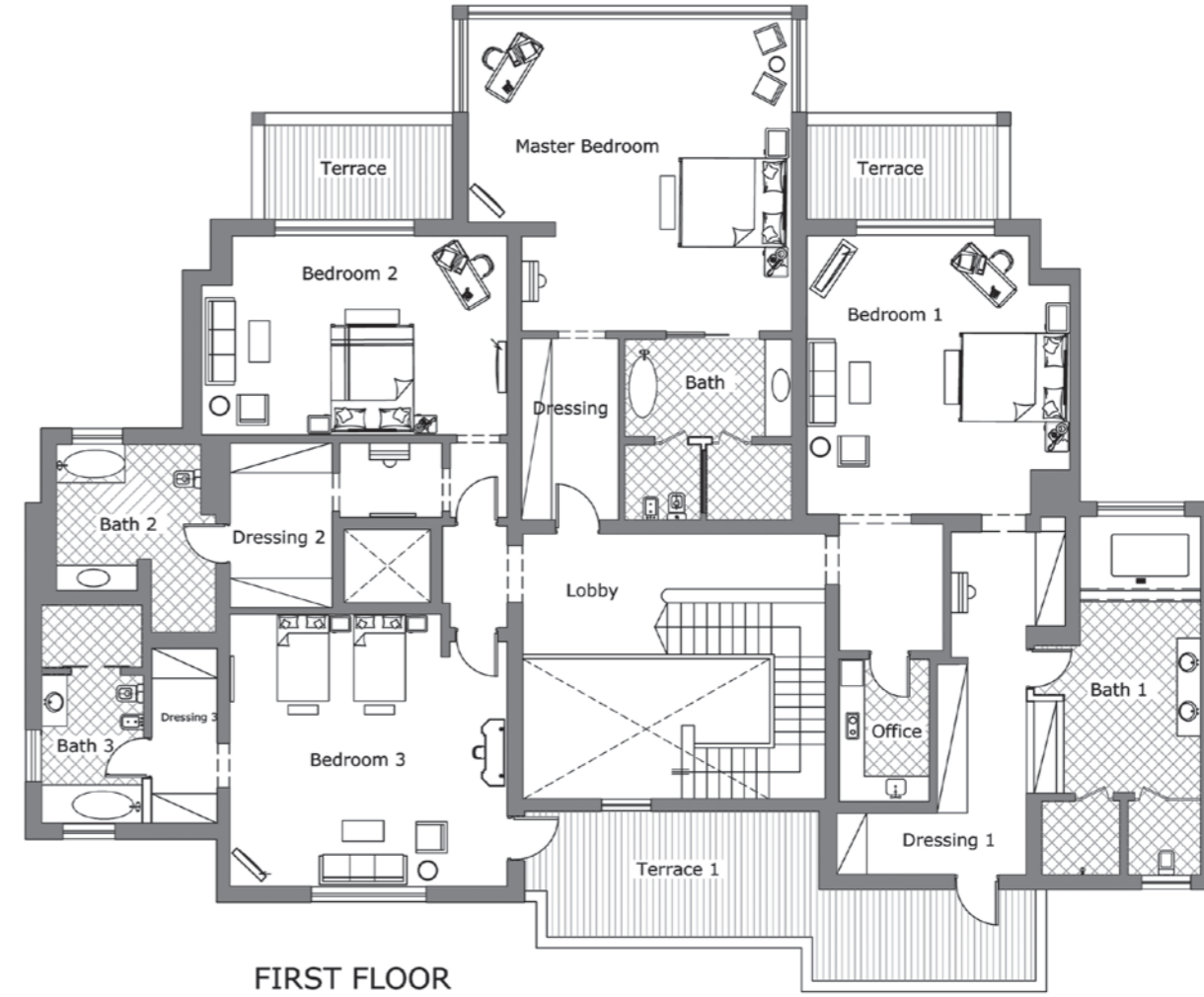
VILLA (5)

Net Area 2236m²





Space	Dimensions (m)
Reception	14.55x6.46
Entrance Hall	6.15x4.54
Ent.	1.90x1.64
Bedroom	5.40x4.48
Dressing	3.90x1.94
Bath	3.85x2.48
Bedroom 1	5.46x5.18
Dressing 1	3.16x2.38
Bath 1	4.41x2.90
Kitchen	8.44x3.96
W.C.	2.66x2.28
Terrace	17.15x3.62
Terrace 1	2.80x2.53
Maid	4.09x3.72
Maid w.c.	3.57x1.55
Laundry	2.80x2.39
Guard	2.02x1.92
Ground Floor Total Area	
471 m ²	



Space	Dimensions (m)
Master Bedroom	7.56x7.27
Dressing	4.25x2.25
Bath	4.22x3.91
Bedroom 1	6.50x4.15
Dressing 1	8.00x2.08
Bath 1	8.36x3.71
Bedroom 2	7.13x4.65
Dressing 2	3.85x2.40
Bath 2	3.54x3.38
Bedroom 3	6.48x6.35
Dressing 3	4.09x1.54
Bath 3	5.10x2.39
Terrace	4.44x2.20
Terrace 1	11.37x2.94
Office	3.33x2.12
Lobby	7.06x2.82
First Floor Plan Total area	
468 m ²	

LAKE VILLAS INTERIOR FINISHING SPECIFICATIONS

Entrance

2 Main Gates.
Parking Area.

Floors

White Marbled Floors.
Kitchens and Kitchenettes are covered with
Black Porcelain.

Bathrooms

1 guest WC.
6 bathrooms, bathtubs and showers.
1 jacuzzi.

Air circulation

Central air conditioning with separate
controllars.

Ground Floor

Entry Hall

On the right hand side: guest WC - 2 bedrooms
with en-suite dressing and bath rooms, one of
them has a direct access to the main garden
through a balcony.

On the left hand side: elevator - kitchen -
laundry room - staff accommodation.

Main Hall

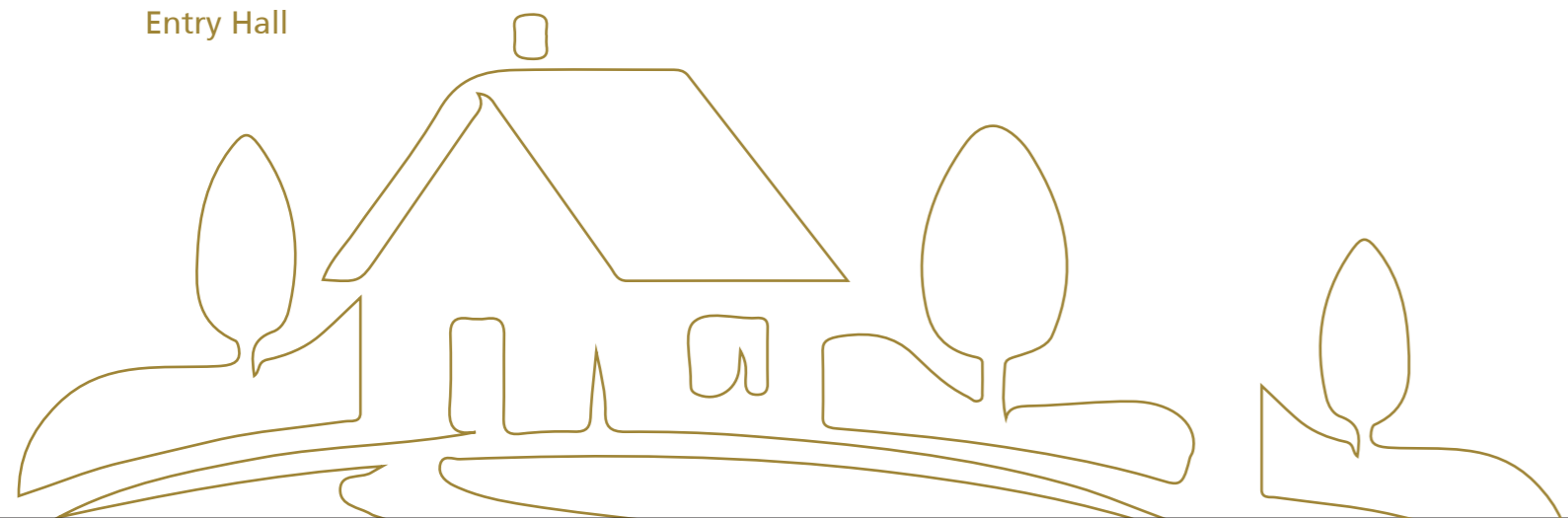
Divided into 3 parts including reception,
dining and living areas.

Main Garden

An outdoor terrace over-looking green
gardens and a swimming pool.

First Floor

4 master bedrooms with en-suite dressing and
bathrooms.



CHALETS

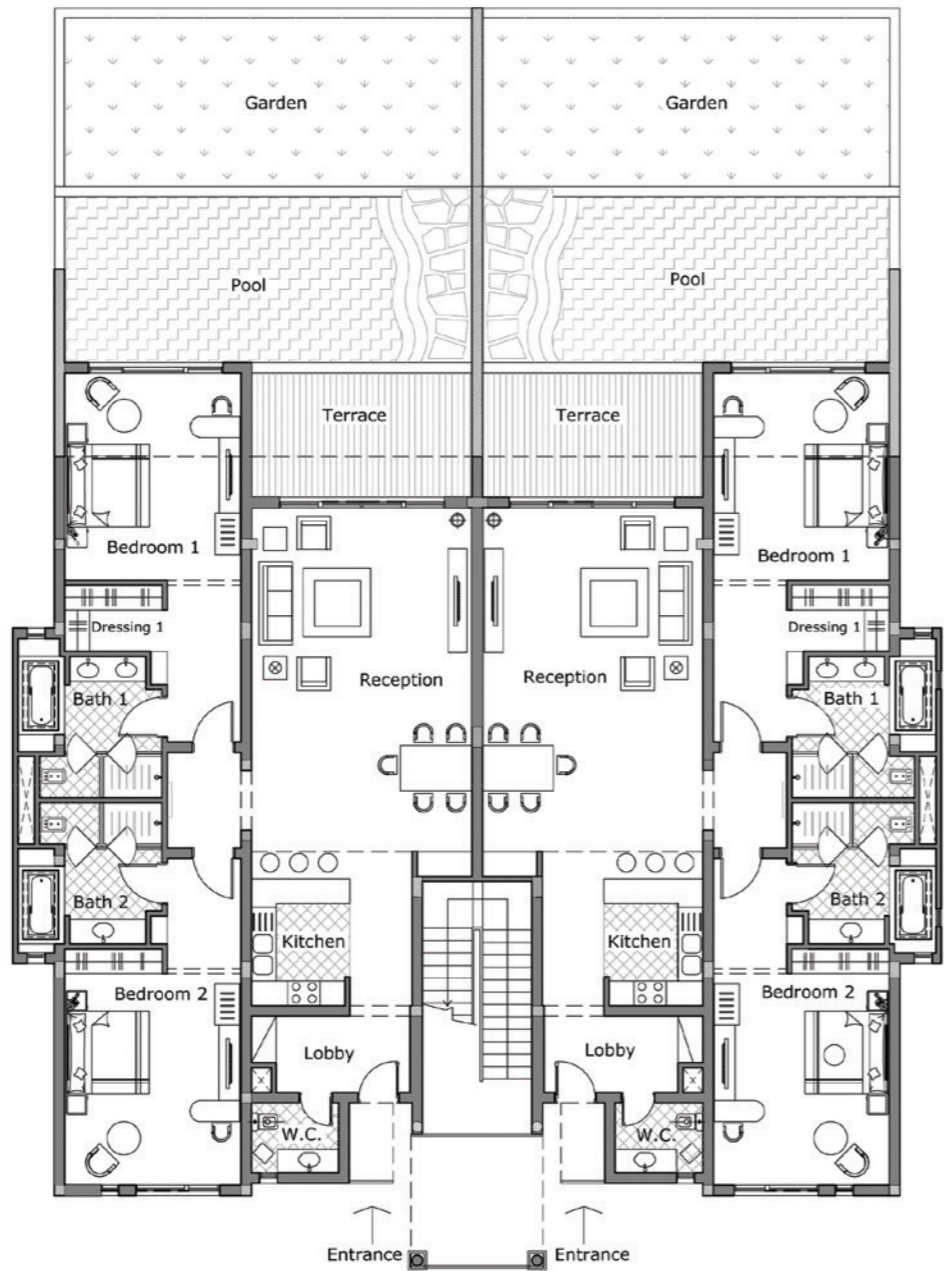
Net Area 592.80m²

Across from Lake Villas through a pathway, Chalets are luxurious two floor buildings each with 4 apartments. Each apartment has 2 bedrooms overlooking a private outdoor swimming pool.

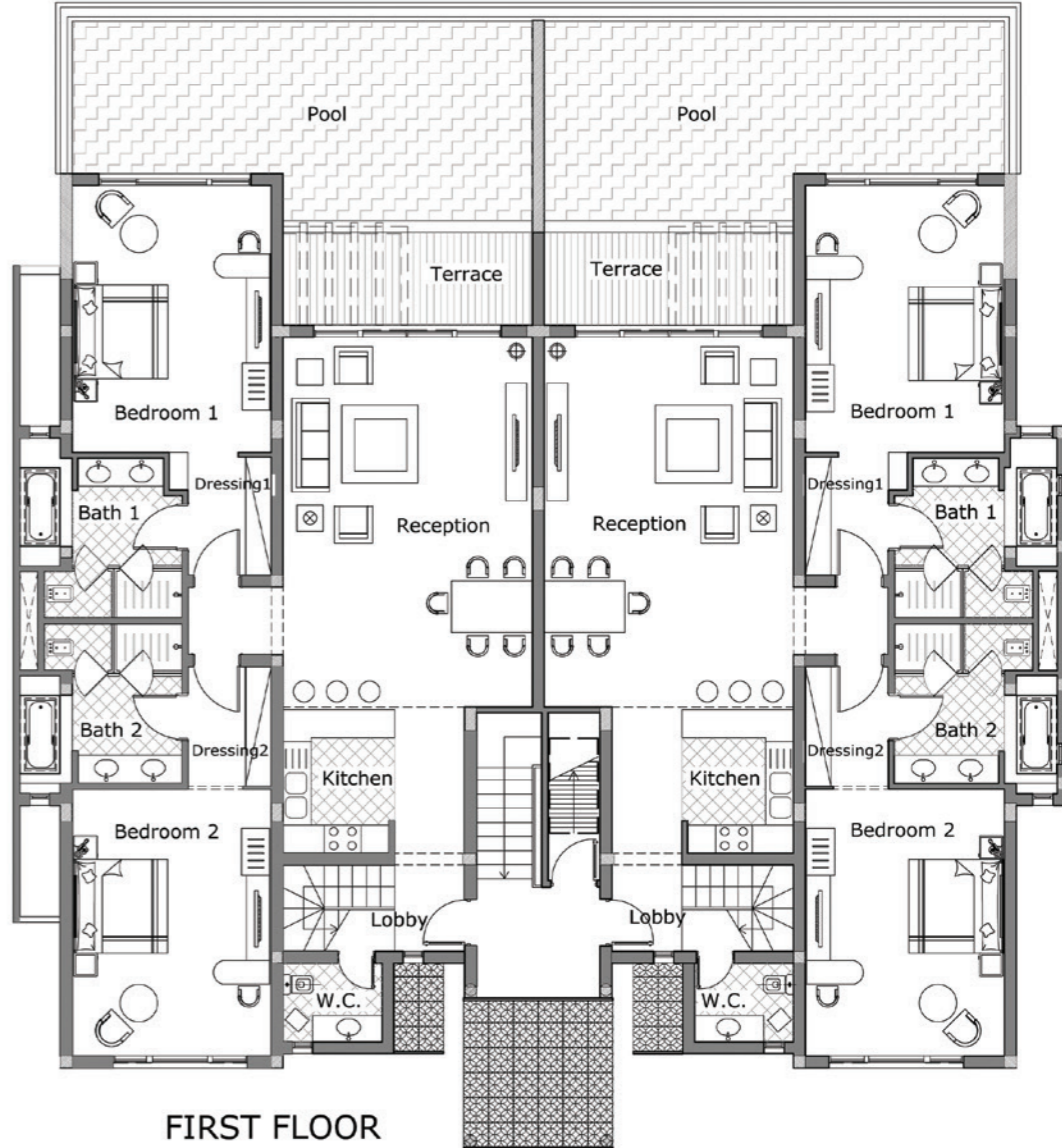




Space	Dimensions (mt)
Reception	8.95x5.32
Bedroom 1	4.99x4.25
Dressing 1	2.36x1.60
Bath 1	3.47x3.40
Bedroom 2	5.10x4.25
Bath 2	3.47x3.40
Terrace	5.32x3.00
Pool	9.83x4.00
Garden	9.83x4.00
Kitchen	3.06x2.38
W.C.	2.11x1.68
Lobby	3.23x1.85
Ground Floor Plan Total area	293.30 m2



Space	Dimensions (mt)
Reception	7.95x5.32
Bedroom 1	5.70x4.25
Dressing 1	2.52x1.78
Bath 1	3.47x3.40
Bedroom 2	5.70x4.25
Dressing 2	2.52x1.78
Bath 2	3.47x3.40
Terrace	5.31x2.00
Pool	9.82x3.25
Kitchen	3.12x2.38
W.C.	2.11x1.68
Lobby	3.88x1.85
First Floor Plan Total area	233.70 m2

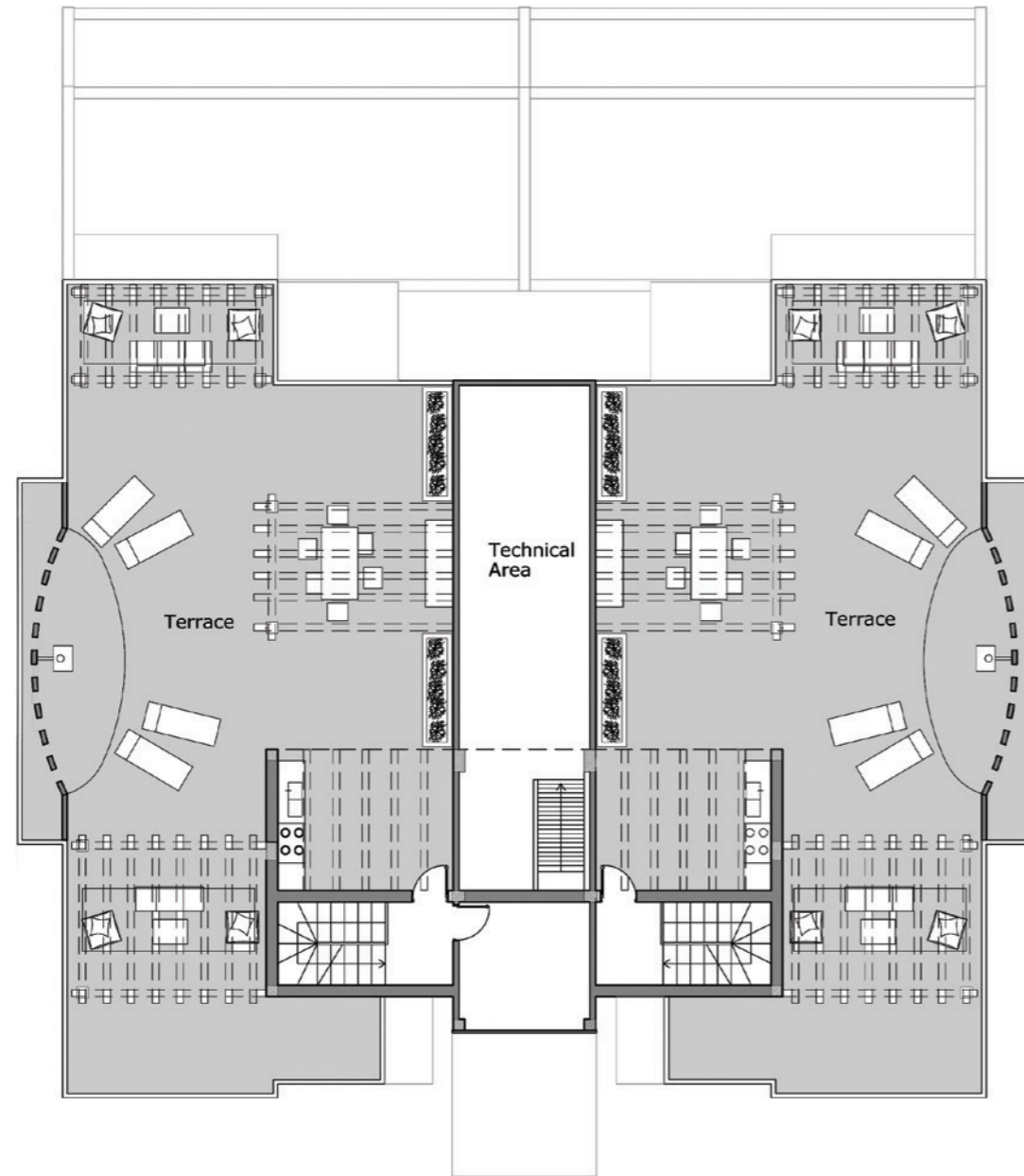


FIRST FLOOR

CHALETS INTERIOR FINISHING SPECIFICATIONS

Space	Dimensions (mt)
Terrace	13.40x9.65
Technical Area	11.16x2.89

Roof Floor Plan Total area	153.20 m2
----------------------------	-----------



Entrance

Wooden door with exceptional artwork.

Floors

White Marbles.

Bathrooms

1 guest bathroom.

2 bathrooms with bathtubs and showers.

Air circulation

Central air conditioning with separate controllers.

Swimming Pool

Accessible through 1 bedroom and the living room.

Roof

Special access to rooftop through an interior stairs.

Rooftop has a kitchenette and a barbecue area.



