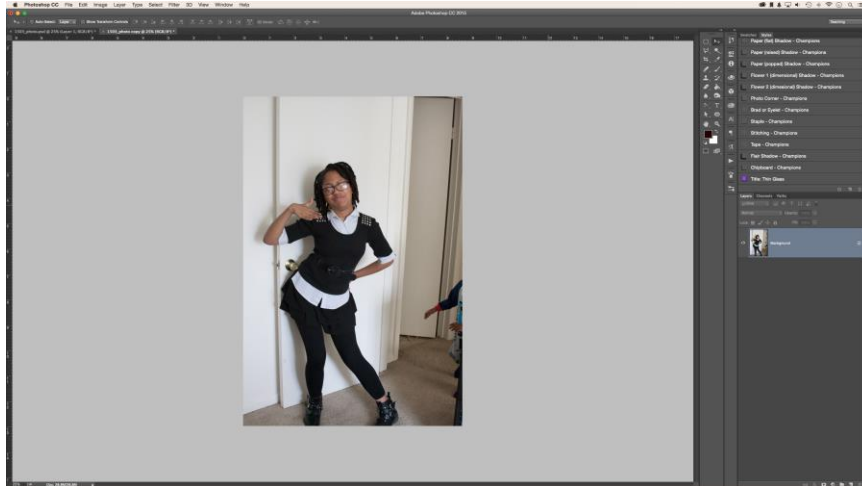


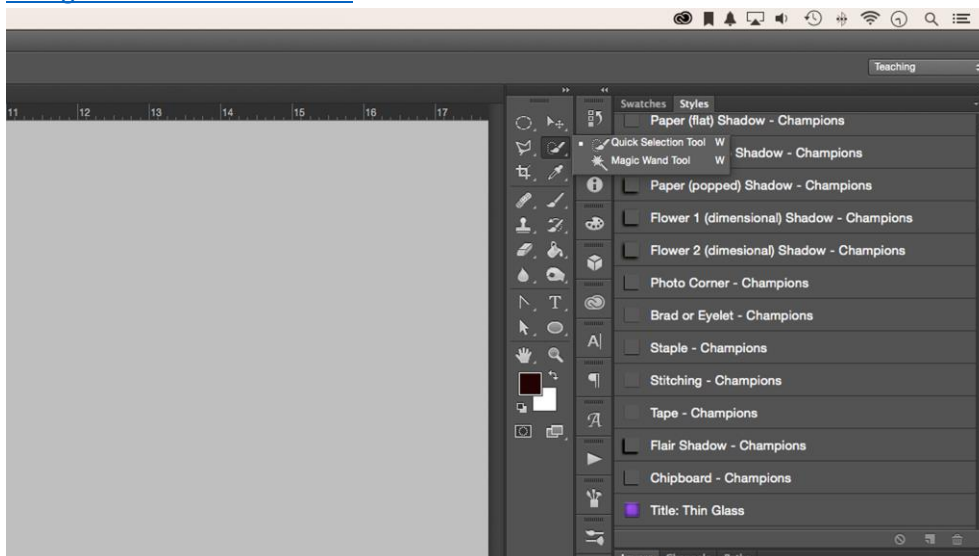
How to Remove the Background of an Image in Photoshop



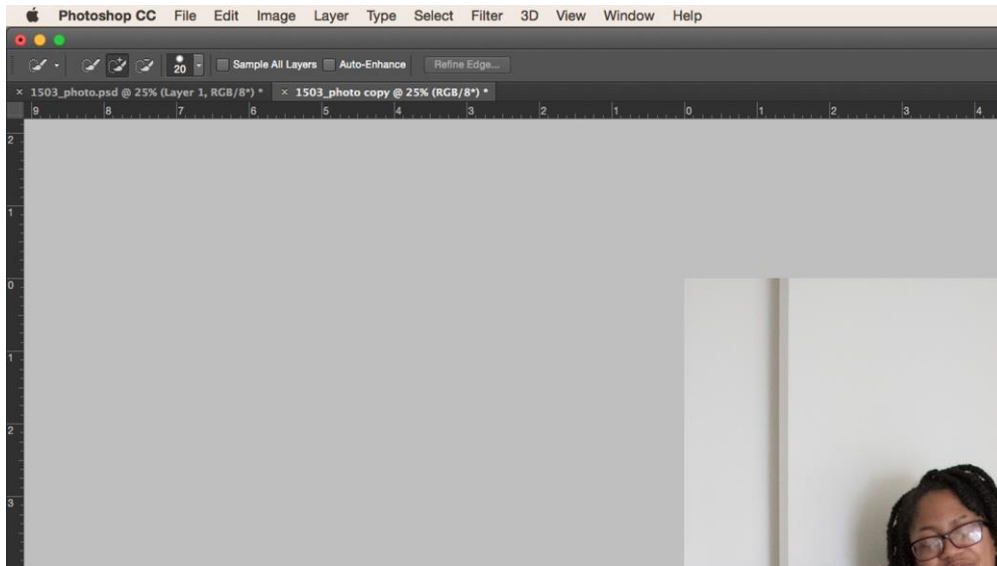
Envision the subject of your photograph encompassed by a totally unique background — one you've structured starting from the earliest stage utilizing your creative mind. Before you can put your subject into a totally new scene, you'll have to expel the background of the first picture first. [Background removal service](#) is a dubious workmanship and requires something other than the eraser device, however you don't need to be a visual computerization genius to get familiar with the means in Adobe Photoshop CC.

Stage 1: Ready Your Tool

To begin with, open your photograph in Adobe Photoshop. To evacuate the background, select the 'Speedy Selection Tool' from the instruments board. (Try not to see the 'Snappy Selection Tool!' It might be settled with the 'Enchantment Wand Tool'). The 'Brisk Selection Tool' is the best device for essential [background removals service](#).

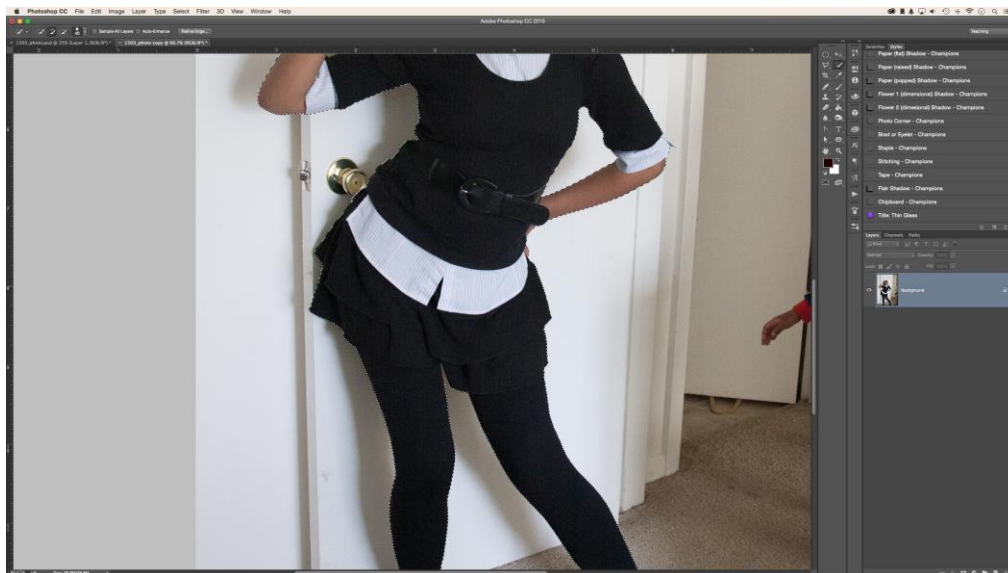


Picking the 'Brisk Selection Tool' opens a setting delicate menu at the highest point of your workspace. Before you start, select 'Add to Selection.' You may need to open the 'Brush Picker' and increment or decrease the brush size contingent upon the size of your photograph.



Stage 2: Remove Background Imagery with a Selection

With the instrument prepared, snap and drag your mouse on the undesirable background. A gathering of walking ants, or choice, will show up and develop as you snap and drag. Bit by bit work around your subject adding to the determination as you go.



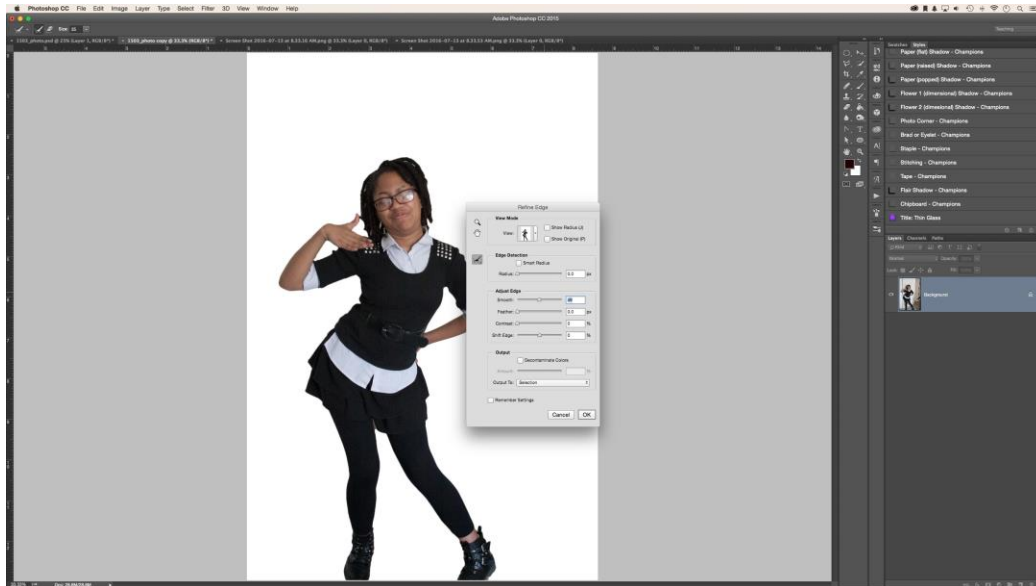
Some of the time, you'll see that a few territories are added to your choice that you would prefer not to incorporate. Hold down the 'Alt' or 'Choice' key to flip the subtraction mode for the apparatus, and after that snap and drag your mouse around the background region you wish to evacuate. Discharge the 'Alt' or 'Alternative' key when you're prepared to add to your choice once more. Shift back and forth between the expansion and subtraction modes as your work.

Zoom-in nearer to work harder regions that incorporate both background and subject. Tip: littler subtleties like shoestrings, aren't important to incorporate. Be that as it may, lessening your brush to 1px can help catch the littlest subtleties.

When your subject is totally inside a choice, you're prepared to proceed onward.

Stage 3: Refine the Edges

With the determination complete, right snap inside the walking ants and select 'Refine Edge' from the spring up menu.

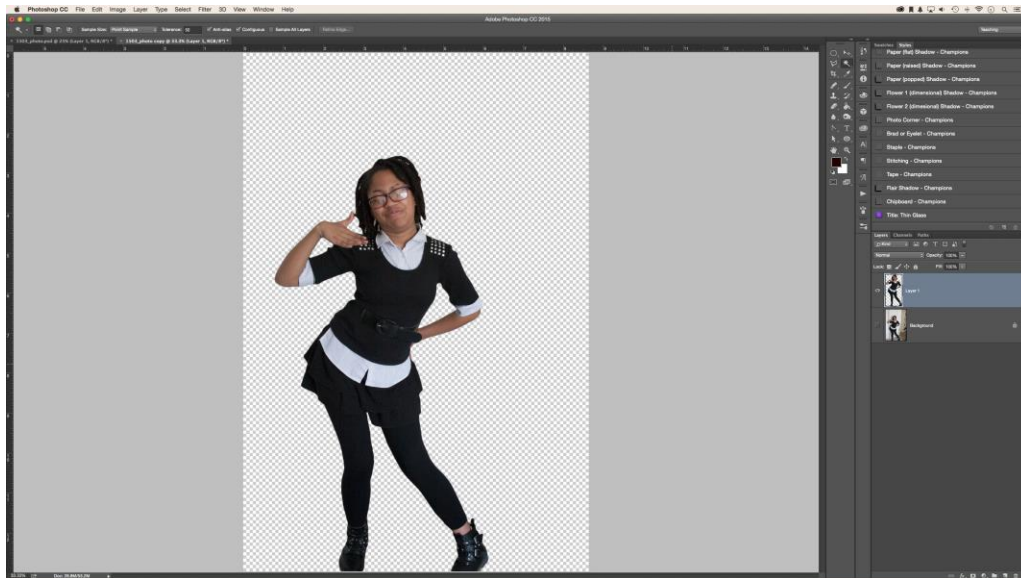


The Refine Edge exchange can enable you to tweak your determination for better outcomes. In the first place, change the View Mode to 'On White' or any alternative that pointedly stands out from your determination. Doing as such will enable you to see the pieces of your edge that need the most assistance.

Under Adjust Edge, increment the Smooth worth slider to relax the rugged edges of your choice. You may need to alter extra sliders however smoothing should help the most. Snap OK when wrapped up.

Stage 4: View Your Selection On a New Layer

Your last advance is to audit your outcome. Right-click inside your determination and pick Layer Via Copy. Your determination will dole out itself to another layer, sans background, without having altered your unique photograph.



Switch off the perceivability of your unique background layer to see your finished piece against the first picture.

Evacuating the background of a picture is the initial step for compositing achievement. With the background expelled, you're prepared to make another encompassing for your subject utilizing your very own innovativeness.