

January 2018 Monthly Newsletter

Creek Bend Heights

A P A R T M E N T S

25 Buffalo Street
Hamburg, NY 14075
www.creekbendheights.com



Community Staff

Gayle Kenney, Community Manager
Devyn Lewis, Assistant Manager
Maureen Hill, Housekeeper
Tom Kuszniaj, Maintenance Supervisor

Office Information

Office Phone: (716) 648-5200
Office Fax: (716) 646-1109

Office Hours

Monday thru Friday: 8:30AM - 5:30PM
Saturday: Closed
Sunday: Closed

Important Phone Numbers

Emergency Maintenance:
(716) 648-5200, Option 3
Poison Control: (800) 222-1222
Nutrition Program (716) 648-2414
Van Transportation (716) 646-1666
Hair Salon (716) 648-7645
Non-Emergency Police Department:
(716) 648-5111
Emergency Fire, Police or Ambulance:
911

Local Events

SunMoon Psychic Expo at Michael's Catering

4885 Southwestern Blvd.

Cost: \$7 Admission, \$45 Readings

When: January 20th-21st

Time: 10:00AM - 6:00PM

Benefit Sadie's Safe Harbor Canine Rescue Group

Winterfest

Chestnut Ridge Park

When: January 28th

Time: 11:00AM - 4:00PM

Free Family fun, sledding, arts and crafts, \$5 Hayride

Hosted by Erie County Parks and Recreation

AherePac Presentation

When: January 22nd

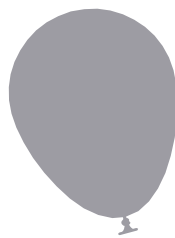
Time: 2:30PM

They offer an alternative to setting up daily pill boxes.

Social Hour

Wednesday, January 17th, 3:00PM

Sign up in the Community Room by Friday, January 12th



*Happy Birthday to
our residents!*



Eleanor A., 3rd
Rachel H., 5th
William M., 5th
Judith d., 5th
Barbara D., 15th
Delores N., 16th

Phyllis S., 19th
Betty J., 21st
Gail G., 21st
Noreen F., 27th
Sandra H., 27th
Eva B., 31st

Thank You to all our residents who renewed their lease! We're excited that you continue to make Creek Bend your home. And a BIG Welcome to ALL our new residents! We are happy that you chose Creek Bend to be your home!

JANUARY 2018

Sunday	Monday	Tuesday	Wednesday	Thursday	Friday	Saturday
	Rent Due! 1 Office Closed SCRABBLE 6:00PM PINOCHLE 6:30PM <i>New Year's Day</i>	2 EXERCISE CLASS 2:00PM RUMMY 6:00PM	3 SCRABBLE 6:00PM RUMMY & PINOCHLE 6:30PM	4 STRETCH BAND EXERCISE 2:00PM BINGO 7:00PM	5 TAI CHI EXERCISE PROGRAM 3:30PM POKENO 6:30PM	6 POKENO 6:30PM
7 POKENO 6:30PM	8 COMMUNION SERVICE 4:00PM SCRABBLE 6:00PM PINOCHLE 6:30PM	9 EXERCISE CLASS 2:00PM RUMMY 6:00PM	10 SCRABBLE 6:00PM RUMMY & PINOCHLE 6:30PM	11 STRETCH BAND EXERCISE 2:00PM BINGO 7:00PM	12 TAI CHI EXERCISE PROGRAM 3:30PM POKENO 6:30PM	13 Sing-A-Long 2:00PM POKENO 6:30PM
14 POKENO 6:30PM	15 Presentation by Inheritance Group, giving information on financial planning 2:00PM SCRABBLE 6:00PM PINOCHLE 6:30PM <i>Martin Luther King Jr's Birthday</i>	16 EXERCISE CLASS 2:00PM RUMMY 6:00PM	17 SOCIAL HOUR 3:00PM SCRABBLE 6:00PM RUMMY & PINOCHLE 6:30PM	18 STRETCH BAND EXERCISE 2:00PM BINGO 7:00PM	19 GARDEN CLUB CRAFT 3:00PM TAI CHI EXERCISE PROGRAM 4:00PM POKENO 6:30PM	20 POKENO 6:30PM
21 POKENO 6:30PM	22 SCRABBLE 6:00PM PINOCHLE 6:30PM Presentation Custom Medication Packets 2:30PM	23 EXERCISE CLASS 2:00PM RUMMY 6:00PM	24 SCRABBLE 6:00PM RUMMY & PINOCHLE 6:30PM	25 STRETCH BAND EXERCISE 2:00PM BINGO 7:00PM	26 TAI CHI EXERCISE PROGRAM 3:30PM POKENO 6:30PM	27 Sing-A-Long 2:00PM POKENO 6:30PM
28 POKENO 6:30PM	29 SCRABBLE 6:00PM PINOCHLE 6:30PM	30 EXERCISE CLASS 2:00PM RUMMY 6:00PM	31 SCRABBLE 6:00PM RUMMY & PINOCHLE 6:30PM		<p style="text-align: center;">We would like to wish all of our Residents Happy New Years ! Our office will be closed January 1st in observance to New Years!</p>	



January Word Search



A H W X S T D W K V Z B W C Z
W G B D V R E M O Y D L B Q Q
N O B R E V I K W W E I O A P
C C U T F T L J C J Z Z D V X
U P N Z T T H F Y A O Z B O D
F I R E W O R K S S J A V D Z
W N N K T N Q K E E H R N E T
W S E X Y T F K A E N D V W Y
P M I W N D A N T D D H I C M
V E E T Y L I C I C L E Y K S
A P E N F E G G M C G F U P E
R L B W O Z A N A M W O N S T
I I O Z E O K R Z C O H P N A
U N K B W U P C S Y V R R F K
S P C Q V F X F L R Y C Y B S

FIREWORKS

MITTENS

JACKET

SNOWFLAKES

NEW YEARS



BLIZZARD

SKATES

SNOWMAN

WINTER

ICICLE

New Year, New CASH!



Refer your Family, Friends and
Co-Workers to live at
Creek Bend Heights Senior Apartments
and you will receive up to

\$150 OFF*

ONE MONTH'S RENT!

*Maximum amount paid for referral will be the lesser of \$150 or tenant paid portion of monthly rent.

Referral reward will be given after your referral leases and pays their first month's full rent.

Referral must include your name and apartment number with their application.

Must lease and move-in by February 5, 2018. This offer excludes renewal leases. See office for more details.

Creek Bend Heights (716) 648-5200

A P A R T M E N T S

www.creekbendheights.com



25 Buffalo Street, Hamburg, NY 14075

