

# CISTeC

Research Centre in Science and Technology  
for the Conservation of the Historical-  
Architectural Heritage

*Prof. Maria Laura Santarelli*  
*Director*

*marialaura.santarelli@uniroma1.it*



SAPIENZA  
UNIVERSITÀ DI ROMA

UNIVERSITÀ DI ROMA  
"LA SAPIENZA"



**CISTeC**

Centro di Ricerca  
Scienza e Tecnica per la Conservazione  
del Patrimonio Storico-Architettonico

# MEMBERS



- 24 professors
- 3 faculties (Engineering, Archeology, Architecture,)
- 9 departments



SAPIENZA  
UNIVERSITÀ DI ROMA

UNIVERSITÀ DI ROMA  
"LA SAPIENZA"



**CISTeC**

Centro di Ricerca  
Scienza e Tecnica per la Conservazione  
del Patrimonio Storico-Architettonico



## Location

Civil and Industrial Engineering Faculty  
via Eudossiana 18



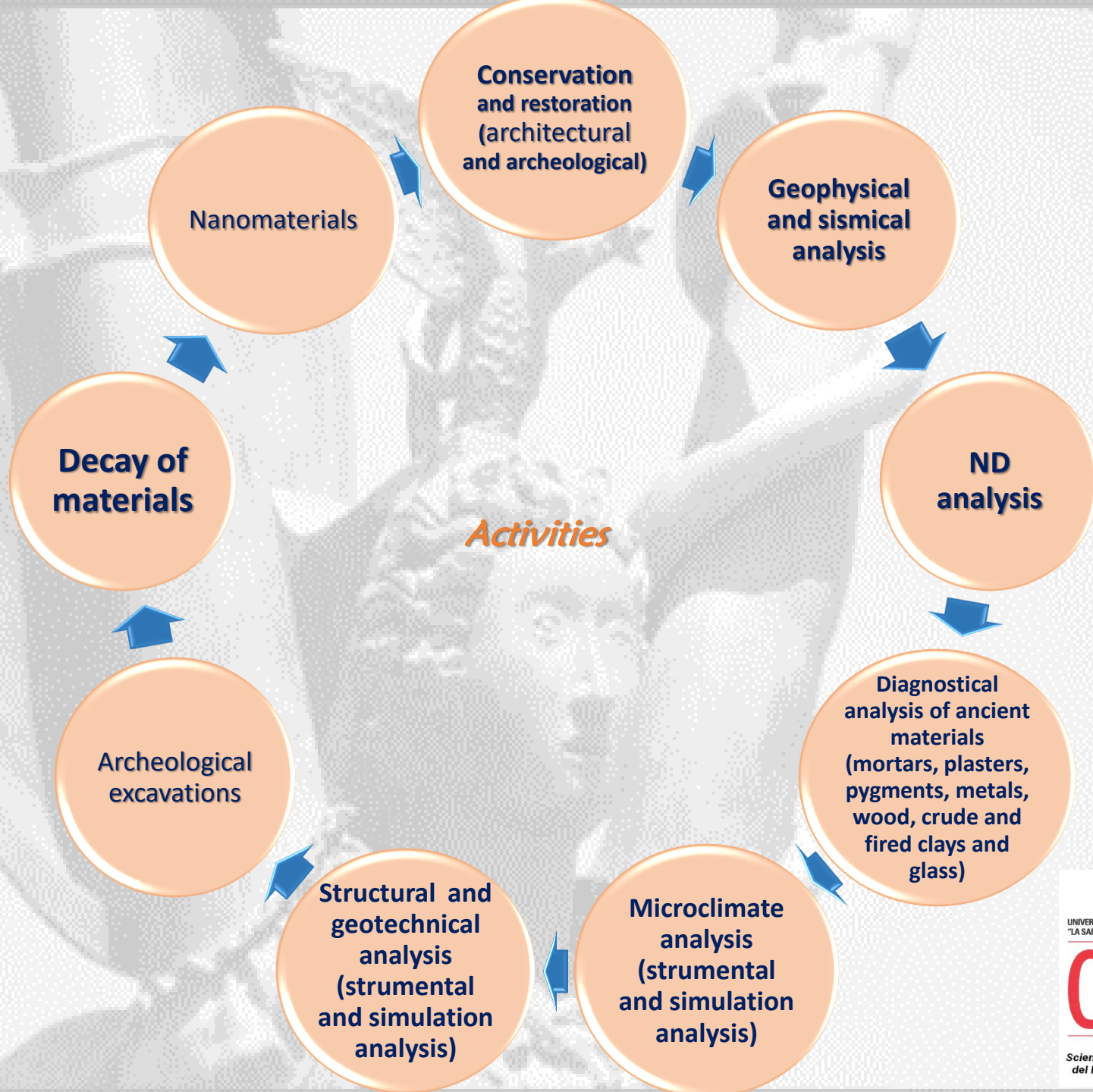
**SAPIENZA**  
UNIVERSITÀ DI ROMA

UNIVERSITÀ DI ROMA  
"LA SAPIENZA"



**CISTeC**

Centro di Ricerca  
Scienza e Tecnica per la Conservazione  
del Patrimonio Storico-Architettonico



# Collaborations

## Lazio:

Soprintendenza Archeologica di Roma e Ostia  
Istituto Superiore per la Conservazione e il Restauro (ISCR)  
CNR Istituto di Biologia e Patologia Molecolari  
Musei Capitolini  
CTS Europe (sede Roma)  
CBC (sede Roma)  
Comune di Roma  
CIM Calci Idrauliche Marcellina (Roma)  
CNR – Istituto di Calcolo Applicato (Roma)  
Consorzio Conart (Roma)  
Cooperativa Fiume Farfa (Rieti)  
CNIS – Università di Roma La Sapienza  
Tecno.el  
Severa Marmi s.a.s., Fiuggi  
RE.CO (Roma)

## out Lazio:

Bruker Optics s.r.l. (Milano)  
CHEM SPEC (Milano, rappresentanza a Roma)  
Soprintendenza Archeologica dell'Umbria  
Dipartimento di Chimica Università di Perugia  
LyondellBasell, Ferrara  
Impresa Bacchi, Milano  
Sterling s.r.l, Perugia  
Massenza srl, Fidenza, Parma

## Internazional:

Slovenian National Building and Civil Engineering Institute (ZAG, Slovenia)  
Federal Institute for Materials Research and testing (BAM, Germany)  
Belgian Building Research Institute (BBRI, Belgium)  
ETH (Zurigo, Svizzera)  
Fraunhofer (Berlino, Germania)  
Labein (Bilbao, Spagna)  
Imperial College (London)  
Università di Novi Sad (Serbia)  
Northwestern University (USA)  
Sogang University (Republic of South Korea)  
•University of Arkasas  
•SUPSI, Lugano (Switzerland)  
•Getty Institute (USA)  
•University of Madrid Carlos III  
•University of San Sebastian - Polymat

*Sites in Roma (selezionati)*

Colosseo  
Domus Aurea  
Augustus' House in Palatine  
Livia' Villa  
Settimio Severo' Arch in Foro Romano  
Marco Aurelio' Bronze Statue in Campitoliun  
Lapis Niger in Foro Romano  
Domus Tiberiana  
Maxensius' Basilica di Massenzio  
Ss Quattro Coronati' Basilica  
Temple of Veiove in Campitoliun  
Titus' Arch in Foro Romano  
Markets of Traiano

*Sites in Italia*

Pompei  
Ercolano  
Greek Tempio in Segesta, Sicilia  
Etruscan Statue of Cavalli Alati in Tarquinia, Lazio  
Greek Column of the Hera Licina' temple in Capo Colonna, Crotona, Calabria  
Castle in Collalto Sabino, Rieti, Lazio

*Foreign sites*

Villa Silin (Libia)  
Monastero di S.Caterina sul Sinai (Egitto)  
Ebla (Siria)  
Elaiussa (Turchia)  
Eridu (Iraq)  
Banbhore (Pakistan)

# Heritage-Lab

*Finanziamento Filas – Regione Lazio*

- Spettroscopy FT-Raman e micro-Raman
- Spettroscopy FT-IR e micro-FTIR
- Spettroscopy FT-IR mobile (alpha)
- Thermal Analysis
- Microscopies
- ..... and FESEM, AFM, XRD, XRF, mechanical tests ecc.



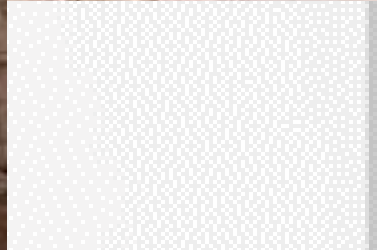
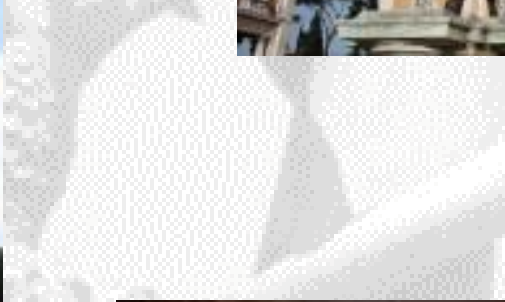
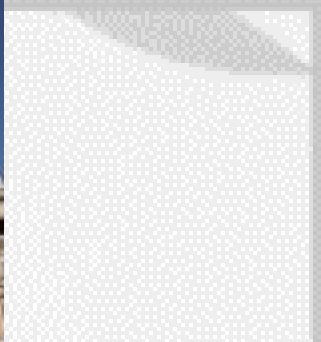
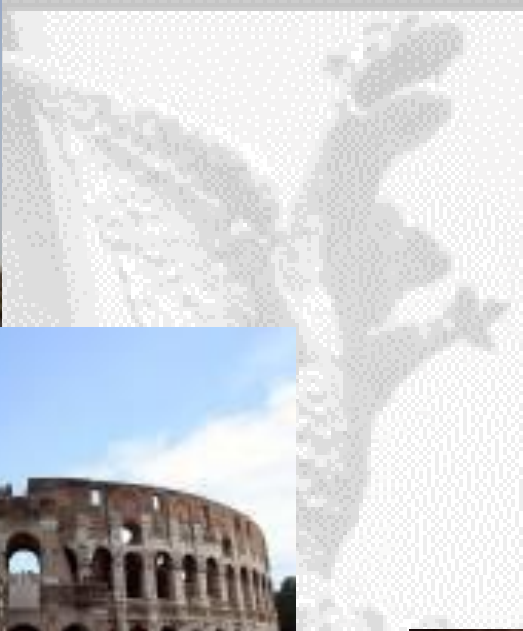
**SAPIENZA**  
UNIVERSITÀ DI ROMA

UNIVERSITÀ DI ROMA  
"LA SAPIENZA"



**CISTeC**

Centro di Ricerca  
Scienza e Tecnica per la Conservazione  
del Patrimonio Storico-Architettonico

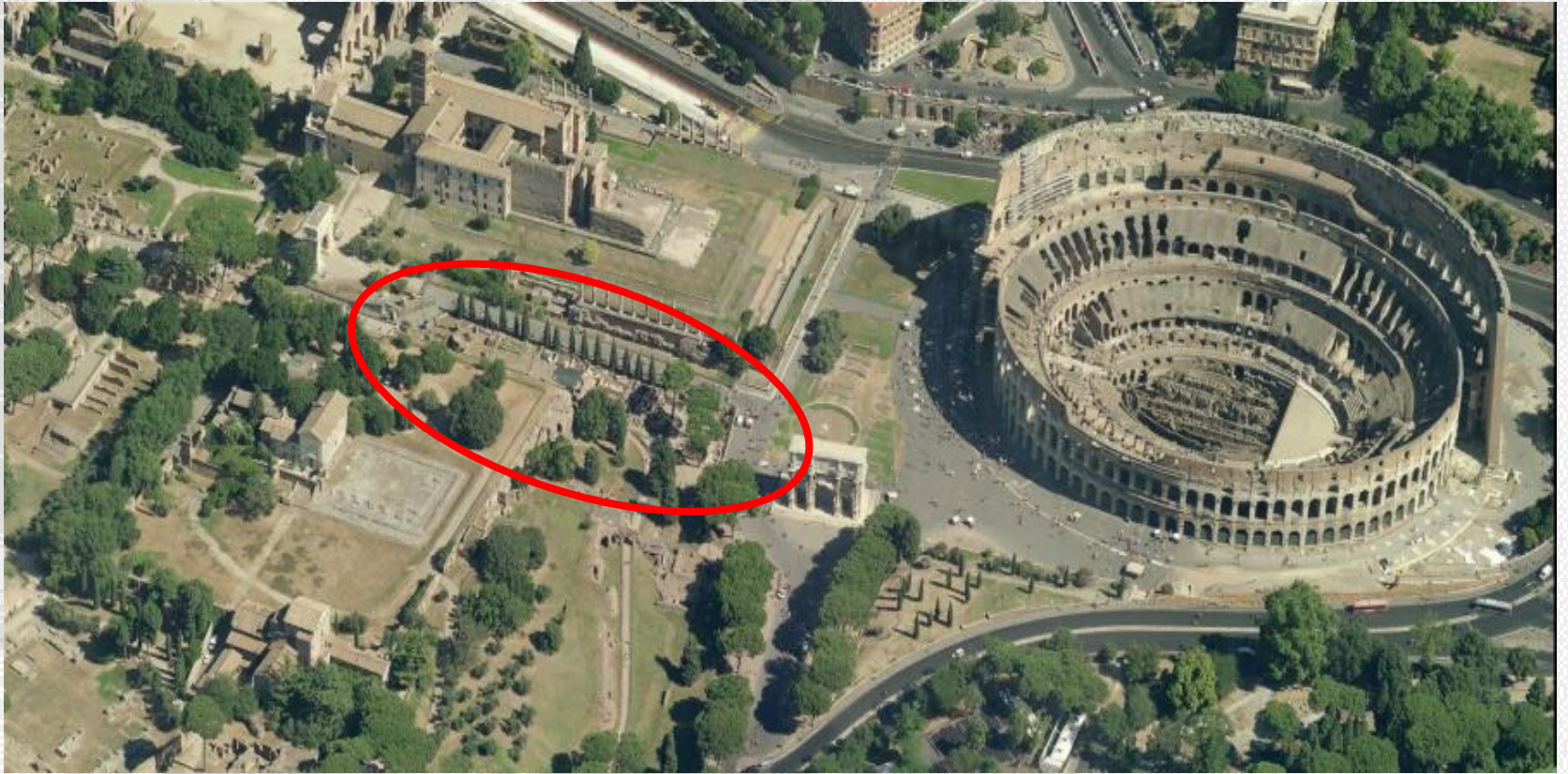






# The Dig in the Palatine Hill: The birth of Rome

# Location



# Prof. Clementina Panella

Director project (since 1983)



# Why the birth of Rome?

- 12 archeological levels (3000 years from the Iron age to the modern age)
- More of million of archeological finds
- Here Augustus Emperor was born
- There is a part of Domus Aurea (Nerone)
- There are Thermal Baths of Elagabalus



# Why the crowdfunding?

- The last findings are of the age BEFORE the birth of Rome (BEFORE ROMOLO)
- We need to study the new finds
- We need to publish the results
- We need to contribute to the knowledge of our origins



# How you can support us?

- Click on LOVEITALY! Web site
- Check our project

(Valley of the Colosseum & Palatine Hill)

Or copy this link in your browser:

<http://crowdfunding.loveitaly.org/projects/21-scavando-nell-antica-roma-nella-valle-del-colosseo-e-pendici-del-palatino>

- Spread the word to other
- You can follow our studies!



**Excavating Ancient Rome**  
Valley of the Colosseum & Palatine Hill  
**This Project Needs Your Help.**

**Donate Today**



Loveitaly! is a non-profit association whose objective is to create an international movement that protects & sustains Italy's cultural heritage. Visit [loveitaly.org](http://loveitaly.org) to learn about our work + support our initiatives.  
**Let's dig this together.**

[loveitaly.org](http://loveitaly.org)

# Who will be supported?

- Since 1983, 3500 students and PhD students and we want to continue!
- Different training:  
engineers, architects, archeologists, restorators,  
conservation scientists



# SUPPORT US! SUPPORT THEIR DREAMS!

