



SH
SOHO

2018-2019
Hair Extension Catalogue

Volume Pieces



Ali - Human Hair Volume Clip-In Extension

This Ali volume set comes with 6 pieces; two for each side of your part and two for volume in the back. For more volume on the sides, or those with larger hair surface area, additional Ali's may be purchased separately here. These 100% handmade, strip pieces blend perfectly with your real hair, and it is so light that you'll forget you even have it on. It gives instant volume WITHOUT HAVING to tease your hair.

This is not the same as a regular clip-in hair extension, as these pieces come with volume. These pieces are perfect for any type of hair. This is 100% human hair, so you can dye, curl, or straighten them.

Available in 16 colors

Sold in 2 pieces as a set



Ali - Futura Hair Volume Clip-In Extension

Meet Futura Ali - the synthetic version of the Ali. Futura Ali adds instant volume without having to tease your hair. This piece is made of special fibers to give that natural volume look. It gives instant volume without even having to tease your hair. This is not the same as a regular clip-in hair extension, as this piece comes with volume. This piece is perfect for any type of hair. You can also use this item as a side bang.

Available in 12 colors

Sold in 2 pieces as a set



Volume Pieces



Top 1 - Human Hair Volume Clip-In Top Piece

Perfect top piece to cover your small bald spot and give a volume for your short thin hair. You can wear it either horizontally or vertically, depending on your head size, your hair line, and where you want to add volume and coverage. Each strand is made with the highest quality and most natural fiber for a silky-smooth look.

Available in 4 colors

Our TOP 1 pieces are 100% Remy Human Hair with 3 snap clips.



Sena - Human Hair Clip-In Top Piece

Meet Sena - our most versatile, clip-in top piece made of Remi human hair! With beautiful, gentle waves, this top piece can be worn vertically or horizontally for maximizing volume.

Available in 9 colors

Sold as 1 Piece



Volume Pieces



Angela - Human Hair Volume Top Piece

Conceal that thinning hair in the crown area and create instant volume with this innovative top piece. Simply clip this piece to the crown of your head and blend it with your own hair to disguise any thinning areas you may have. This piece is also 100% human hair so it can be ironed, curled and straightened.

Available in 11 colors

Sold as 1 Piece



Lucy - Human Hair Volume Top Piece

Meet Lucy - our 100% handmade top piece used to add volume to the top of your head. It is made to blend perfectly with your real hair. What makes this piece so unique is the ability to pull your own hair through each divided section within the top piece. After pulling your hair through each divided section, just clip it in for an extra secure hold and voila - you have instant volume! Perfect for any hair type, but especially for those with sparse hair in the top of your head.

Available in 13 colors

Sold as 1 Piece



Volume Pieces



Human Hair Bangs

Have you always wanted bangs or nice volumized bangs? The human hair bangs give you bangs & gives some extra volume to your hair so you don't have to go out of your way to cut your normal hair! Made out of 100% Remy Hair.

Available in 8 colors

Sold as 1 Piece



Futura Hair Bangs

Our clip-in Synthetic Bangs are made of special fibers to give it a very natural look.

Available in 24 colors

Sold as 1 Piece



Volume Pieces



Godiva - Human Hair Volume Top Piece

Hand stitched with 100% Human Hair, this 18' volume topper will add volume, length and coverage to the top of your head. Each strand is made with the highest quality and most natural fiber for a silky-smooth look. Godiva is the ultimate hair enhancement extension that is placed at the crown of the head hiding and concealing roots, thinning hair, or gray hair; while providing fullness volume and length.

Available in 6 colors

Our Godiva pieces are 100% Remy Human Hair with 6 snap clips.



Tiara - Human Hair Volume Top Piece

Hand stitched with 100% Human Hair, this 16' volume topper will add volume, length and coverage to the top of your head. Each strand is made with the highest quality and most natural fiber for a silky-smooth look. The Tiara attaches comfortably with coated snap clips for an easy application, which are attached to a breathable mesh piece to create a natural, invisible look.

Available in 6 colors

Our Tiara pieces are 100% Remy Human Hair with 5 snap clips.



Volume Pieces



Alex - Futura Hair Top Piece

Meet Alex- our handmade top piece. This piece is perfect for those with short curly hair or anyone who is looking to add more coverage on the top of your head. This top piece has three clip-ins for an extra secure hold. This product is heat resistant up to 300° Fahrenheit or 148° Celsius.

Available in 24 colors

Sold as 1 piece



Tyler - Futura Hair Top Piece

Meet Tyler- our handmade top piece. This piece is perfect for those with short straight hair or anyone who is looking to add more coverage on the top of your head. This top piece has three clip-ins for an extra secure hold. This product is heat resistant up to 300° Fahrenheit or 148° Celsius.

Available in 23 colors

Sold as 1 piece



Shannon - Human Hair / Futura Hair Top Piece

This 100% handmade top piece hair extension blends perfectly with your real hair and is so light that you won't even notice it is there! Perfect for short hair, four snap clips hold it firmly in place. It fits the top of your head and is slightly longer in back than front for a very natural look. It comes in Human hair and Futura (synthetic) hair. This product is heat resistant up to 300° Fahrenheit or 148° Celsius.

Futura: Available in 24 colors

Human: Available in 10 colors

Sold as 1 piece

Length



Aura - Invisible Wired Human Hair Extension

Meet Aura - our revolutionary, invisible wired hair extension made of Remy Human Hair. The Aura adds instant length. this set contains two auras, the 14" and 20" to achieve a more dramatic, and natural layered look. This will give you instant length *AND* volume.

Available in 11 colors

Sold as 1 piece



Aura - Invisible Wired Futura Hair Extension

Meet Aura - our revolutionary, invisible wired hair extension made of Futura synthetic Hair. The Aura adds instant length. To achieve a more dramatic look, double up and layer two Auras together (the 15" and 19"). This will give you instant length *AND* volume. This product is heat resistant up to 300° Fahrenheit or 148° Celsius.

Available in 24 colors, including natural colors and
COLOR: HPK, PK, BL, DBL, PP, DPP, GRY, RD, SA, ETC.

Sold as 1 Piece



Length



Isabella - Futura Hair Clip-In Extension

Meet Isabella - our 13" clip-in Futura hair extension. The Isabella is very easy-to-use. This piece is perfect for those with longer, thicker hair. Made from high-quality, synthetic fiber called Futura, these extensions look and feel like your real hair! Our FULL sets are for those who love more volume and fuller length! This product is heat resistant up to 300° Fahrenheit or 148° Celsius.

Available in 25 colors

Sold in 4 piece sets



Allison - Futura Hair Clip-In Extension

Meet Allison - our 16" clip-in hair extensions are made of high-quality, synthetic Futura fiber. This piece is great for longer, thicker hair. This is our newest FULL set which has more fibers than our LIGHT set giving you additional fullness and length! This product is heat resistant up to 300° Fahrenheit or 148° Celsius.

Available in 25 colors

Sold with 4 pieces

- One piece (narrow weft) is 16" long
- Second piece (wider weft) is 14" long



Ponytail



Kasey - 11" Wrap-Around Ponytail Extension

The Kasey fits right over your own ponytail and gives you instant length. To use it, simply create a ponytail and secure it with an elastic band. Then grab the Kasey and place it on top of your ponytail. At the base of the ponytail, insert the comb that is attached to the Kasey above the elastic band so that the Kasey does not slip off your ponytail. Then wrap the extra piece of hair around the base of your ponytail (to cover the elastic band) and secure the end with bobby pins or an accessory of your choice! Made of high quality synthetic fiber.

Available in 22 colors

Sold as 1 piece



Christy - 18" Wrap-Around Ponytail Extension

The Christy fits right over your own ponytail and gives you instant length. To use it, simply create a ponytail and secure it with an elastic band. Then grab the Christy and place it on top of your ponytail. At the base of the ponytail, insert the comb that is attached to the Christy above the elastic band so that the Christy does not slip off your ponytail. Then wrap the extra piece of hair around the base of your ponytail (to cover the elastic band) and secure the end with bobby pins or an accessory of your choice!

Available in 21 colors

Sold as 1 piece



Ponytail



Long Christy - 25" Wrap-Around Ponytail Extension

Meet Christy - our sleek wrap-around ponytail hair extension in long length, 25", made of high quality synthetic fiber.

The Christy fits right over your own ponytail and gives you instant length. To use it, simply create a ponytail and secure it with an elastic band. Then grab the Christy and place it on top of your ponytail. At the base of the ponytail, insert the comb that is attached to the Christy above the elastic band so that the Christy does not slip off your ponytail. Then wrap the extra piece of hair around the base of your ponytail (to cover the elastic band) and secure the end with bobby pins or an accessory of your choice!

Available in 21 colors

Sold as 1 piece



Miley - Futura Wrap-Around Ponytail Extension

Meet Miley - our 18" curly wrap-around ponytail hair extension. This is the curly version of the Christy.

The Miley fits right over your own ponytail and gives you instant length. To use it, simply create a ponytail and secure it with an elastic band. Then grab the Miley and place it on top of your ponytail. At the base of the ponytail, insert the comb that is attached to the Miley above the elastic band so that the Miley does not slip off your ponytail. Then wrap the extra piece of hair around the base of your ponytail (to cover the elastic band) and secure the end with bobby pins or an accessory of your choice! Made of high quality synthetic fiber.

Available in 22 colors

Sold as 1 piece



Ponytail



Susan - Futura Clip-In Ponytail Extension

Meet Susan - our medium length clip-in ponytail extension. This piece can be worn in two different ways: as a long, layered look or a shorter ponytail by flipping the jaw clip over. Made of high quality synthetic fiber. This product is NOT heat resistant.

Available in 27 colors

Sold as 1 piece



Joann - Futura Clip-In Ponytail Extension

Meet Joann - our longest clip-in ponytail extension. Joann comes styled with beautiful, gentle waves, and can be worn in two ways. Wear this as a long, layered ponytail or flip the jaw clip over and wear this as a shorter ponytail that is all one length. What's great about the Joann and makes it easy to wear is the strong jaw clip that is at the base of this ponytail extension. This product is NOT heat resistant.

Available in 27 colors

Sold as 1 piece



Ponytail



Juliet - Human Hair Ponytail Extension

Our sleek wrap-around ponytail hair extension. Juliet will give you instant length just the same as the Christy, but with a more natural look, since it is made of 100% high quality Remi hair. You can color and curl the Juliet. Treat just the same as your own hair. At the base of the ponytail, insert the comb that is attached to the Juliet above the elastic band so that the Juliet does not slip off your ponytail. Then wrap the extra piece of hair around the base of your ponytail to cover the elastic band and secure the end with bobby pins or an accessory of your choice.

Available in 6 colors

Sold as 1 piece



Meghan - 18" Futura Ponytail Extension

A premium quality, jaw clip extension, with a wavy and layered ponytail style. This versatile hair piece is an easy to wear, everyday and special occasion extension, that can transform any hairstyle with a thicker and longer look. The unique claw clip attachment is what gives hair a naturally voluminous look! Simply tie your hair into a ponytail and clasp the jaw clip over your hair for a seamless finish. Our premium Futura hair fibers allows you to apply heat and style accordingly with up to 350 degrees Fahrenheit.

Available in 22 colors

Sold as 1 piece



Up-do



Tiffany - Short Wired Up-do Extension

This hair extension piece is the sister version of the Rena. This hair extension piece allows you to make an easy, everyday updo in just seconds! Simply make a bun with your natural hair, then insert one piece under the bun and twist the ends around your bun. Insert the second piece on the top of the bun and make sure that this piece locks with the other piece in order to create a secure fit. The secure fit that the Tiffany provides makes this item very popular amongst dance teams, cheer teams, and figure skaters.

Available in 24 colors
Sold as a pair



Rena - Curly Wired Up-do Extension

This hair extension piece is the sister version of the Tiffany. The Rena is longer in length and also very curly. This popular piece allows you to create an elegant, beautiful updo in just seconds for any formal occasion! Simply make a bun with your natural hair, then insert one piece under the bun and twist the ends around your bun. Insert the second piece on the top of the bun and make sure that this piece locks with the other piece in order to create a secure fit.

Available in 24 colors
Sold as a pair



Half wig



Jeanne - Invisible Wire Human Hair Extension

Meet Jeanne: our latest functional invisible wired hair extension, made of Remy Human Hair. The Jeanne has an innovative concave design that is placed at the crown. This is a revolutionary new lengthening extension; hand stitched with natural layers, to solve the challenge of blending in even the shortest and thickest hair types!

Available in 11 colors

Sold as 1 piece



SOHO

HUMAN HAIR COLOR CHART

BLONDES



S12-1 Platinum Blonde



S01 Light Blonde



S15 Golden Natural Blonde



S04 Ash Blonde



S03-16 Reddish Blonde

BROWNS



S17 Ash Brown Highlights



S13 Medium Ash Brown



S05-6 Frosted Brown



S07 Medium Brown



S22 Bronzed Brown Highlights



S18 Mahogany Brown



S09 Burgundy

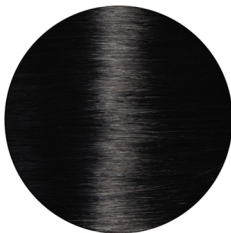


S14-14-1 Dark Soft Brown



S08 Dark Brown

BLACK



S11 Jet Black



SOHO

SYNTHETIC HAIR COLOR CHART

BLONDES



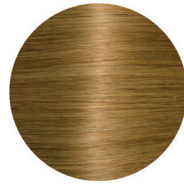
S12 Platinum Blonde



S01 Light Blonde



S20 Light Ash Blonde



S04 Ash Blonde



S15 Light Strawberry Blonde



S02 Strawberry Blonde



S03 Reddish Blonde

BROWNS



S17 Ash Brown Highlights



S16 Ash Brown



S22 Bronzed Brown Highlights



S13 Medium Ash Brown



S05 Natural Brown



S06 Spiced Brown



S1401 Dark Natural Brown



S07 Auburn Brown



S18 Mahogany Brown



S09 Burgundy



S0901 Reddish Auburn

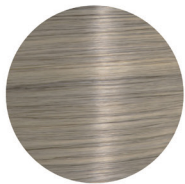


S14 Dark Soft Brown



S08 Espresso Bean

GREYS

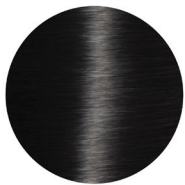


S1901 Natural Grey



S19 Dark Grey

BLACK



S11 Jet Black