

BRIXTON
MOTORCYCLES

**ANY
DIRECTION.
AS LONG AS
IT'S YOUR
OWN.**

see more at: www.brixton-motorcycles.com | contact ksr group: office@ksr-group.com

WHO WE ARE

No two Brixton Motorcycles are the same. Okay, they are when they come off the production line. At this point, in fact, they're identical. Identically designed, spec'd and finished, marketed and sold. It's our riders that make each Brixton unique. The decisions they make. The paths they choose. The lives they live. Where to go with their Brixton. What direction to take. Who to ride along with. So that, before you know it, it's not the same bike any more. Now it's truly a Brixton. As individual as the people who ride them.

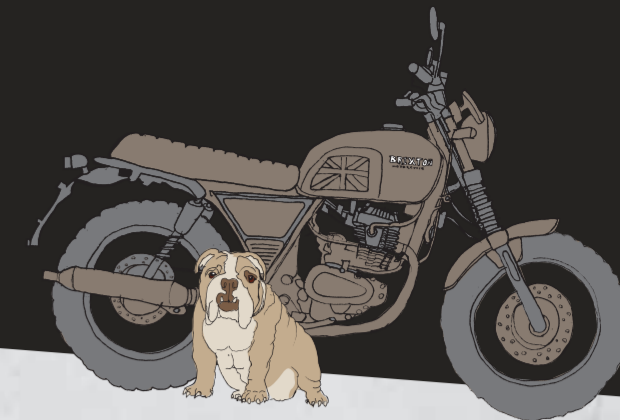


DE/ Keine Brixton gleicht der anderen. Okay, sie sind gleich, wenn Sie vom Band laufen. Bis zu diesem Punkt sind sie tatsächlich identisch. Identisches Design, identische Spezifikation und identische Fertigung nach höchsten Standards. Identisch vermarktet und verkauft. Es sind die Fahrer, die jede Brixton einzigartig machen. Die Entscheidungen, die sie treffen. Die Wege, die sie wählen. Die Leben, die sie leben. Wo sie mit ihrer Brixton hinfahren. Welche Richtung sie wählen. Mit wem sie fahren. Ohne es zu wissen, ist es somit nicht mehr das gleiche Motorrad. Nun ist es wirklich eine Brixton. So individuell wie die Fahrer, die sie bewegen.

IT/ Nessuna Brixton è uguale all'altra. Okay, sono uguali quando escono dalla produzione. Fino a quel momento sono identiche. Stesso Design, stesse specifiche tecniche e stessa cura di montaggio ad alti livelli. Distribuite e vendute in maniera uguale. Sono i proprietari che rendono ogni Brixton unica. Decidono con chi trovarsi. Scelgono le strade da percorrere. La vita che vogliono vivere. Dove vogliono andare con la loro Brixton. La meta che vogliono raggiungere. Con chi viaggiare. Senza accorgersene non è più la stessa moto. Ora è una vera Brixton. Unica come il suo proprietario che la guida.



CUSTOM PARTS



black / art. nr.: 701000-143



brown / art. nr.: 701000-146



brown / art. nr.: 701000-158



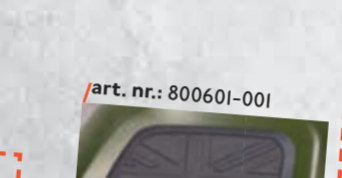
silver / art. nr.: 801000-605



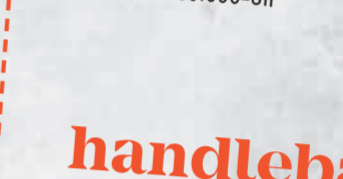
green / art. nr.: 801000-597



black / art. nr.: 801000-607



brown / art. nr.: 801000-611



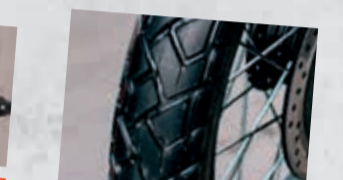
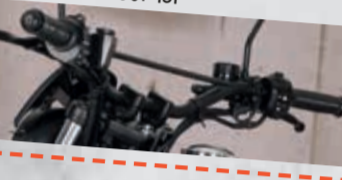
art. nr.: 600001-132



art. nr.: 600001-121



art. nr.: 600001-131



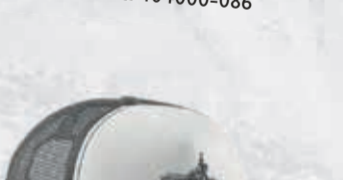
rear / art. nr.: 408000-090
front / art. nr.: 404000-081



rear / art. nr.: 408000-100
front / art. nr.: 404000-087



rear / art. nr.: 408000-099
front / art. nr.: 404000-086



fuel tank

art. nr.: 800601-001



knee pads

handlebar

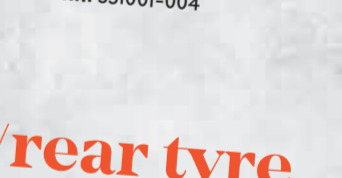
front wind shield

art. nr.: 081936-001 SET



head light circle

art. nr.: 331001-004



front/rear tyre

muffler comp.

art. nr.: 180000-367



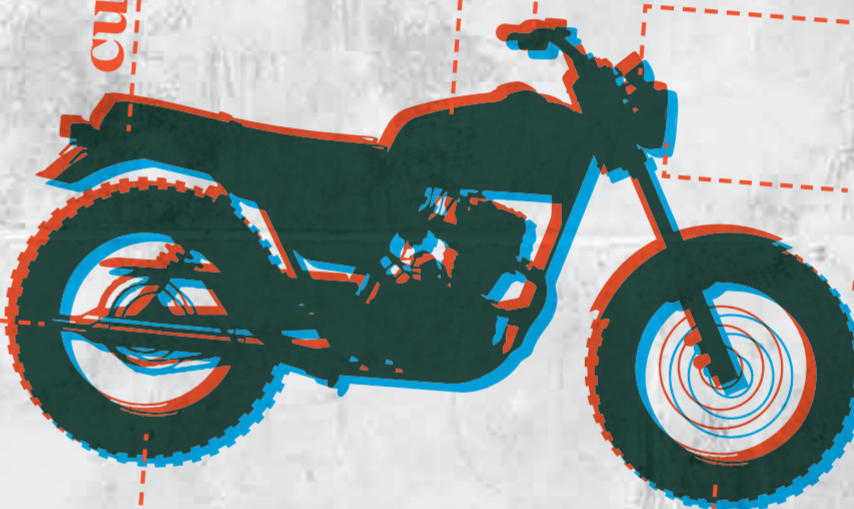
art. nr.: 180000-342



art. nr.: 180000-359



cushion



helmets

- grey / art. nr.: EXP-BRIX-000006
- black mat / art. nr.: EXP-BRIX-000008
- × shell: fiberglass
- × colour: black mat, grey
- × lining: genuine leather
- × XS, S, M, L, XL, XXL



shirt

- / art. nr.: EXP-BRIX-000002
- × 100% cotton
- × short-sleeve crew neck t-shirt
- × genuine Brixton trademarked apparel
- × dark grey
- × S, L, XL, XXL

cap

- / art. nr.: EXP-BRIX-000001
- × 100% polyester
- × one size fits all adjustable strap closure
- × relaxed fit
- × dark grey



In order to design your BX individually we offer a wide variety of genuine parts for all model variants at particularly attractive prices. Scan the QR Code for your home country and explore the list of parts shown in the corresponding pricelist.

DE/ Um deine BRIXTON individuell zu gestalten, bieten wir dir alle Teile der unterschiedlichen Modell zu günstigen Konditionen an. Scanne den jeweiligen QR-Code für dein Land und finde die dazugehörigen Preise.
IT/ Per informazioni sui vari accessori e prezzi scannerizza il tuo codice QR del tuo paese.

BRIXTON
MOTORCYCLES

Europe



UK



Switzerland



Europe: www.brixton-motorcycles.com/prices_accessories_eu
UK: www.brixton-motorcycles.com/prices_accessories_uk
Switzerland: www.brixton-motorcycles.com/prices_accessories_ch

OUR NEW RIDES

GLANVILLE 250X

GLANVILLE 250X



- ✗ LED daylight
 - ✗ LED turn light
 - ✗ Digital speedometer
 - ✗ ABS - anti-lock braking system
 - ✗ EFI electronic fuel injection
 - ✗ Engine type: 1 cylinder, 4 stroke, air cooled
 - ✗ Displacement: 249 cc
 - ✗ Max power: 13 kw / 7500 ±500 rpm
 - ✗ Ignition: ECU
 - ✗ Brakes front/rear: disc/disc
 - ✗ Unloaded mass of the vehicle: 150 kg
 - ✗ Dimensions: 2020x830x1150mm
 - ✗ Fuel tank capacity: 13 l ±0,2 l
 - ✗ Consumption: n/a
 - ✗ CO₂-Emission: n/a
- Final data available after homologation



„Any direction. As long as it's your own.“ is what the first BRIXTON in the 250 cc class stands for. The Glanville 250X features KOSO LED handlebar indicators and BRIXTON LED headlamps, as well as a replaceable tank inlay for your customization.



custom inlay

DE/ „Any Direction. As long as it's your own.“ wird bei der ersten BRIXTON in der 250 cm³ Klasse groß geschrieben. Die Glanville 250X bietet neben KOSO LED-Lenkerenden Blinkern und LED-Scheinwerfer im BRIXTON-Design, ein austauschbares Tank-Inlay für deine individuelle Gestaltung.

IT/ „Any direction. As long as it's your own.“ è il motto della nuova BRIXTON 250cc. La Glanville 250X offre oltre agli indicatori KOSO LED nel manubrio e al faro anteriore LED, un inserto intercambiabile nel serbatoio.

SPECIAL EDITION

HAYCROFT

The exclusive Half Fairing special edition BX 125 Haycroft is limited to 444 pieces worldwide and offers an independent old-school racing look. The sportiness is underlined with rear-set footrests, adjustable shock absorbers and the single seat bench. Available while stocks last!

DE/ Die exklusive Half Fairing Sonderedition BX 125 Haycroft ist weltweit auf 444 Stück limitiert und bietet einen eigenständigen Old School Racing Look. Die Sportlichkeit wird mit nach hinten verlegten Fußrasten, verstellbaren Dämpfern und der Single Sitzbank unterstrichen. Erhältlich solange der Vorrat reicht!

IT/ La Half Fairing edizione speciale BX 125 Haycroft è una versione limitata a 444 pezzi in tutto il mondo e offre un design racing old-school. La sportività viene sottolineata con i poggiatesta posteriori, ammortizzatori regolabili e la sella monoposto. Disponibile fino ad esaurimento scorte!



BX 125



BX 125 Blue/Silver

- ✗ LED daylight
- ✗ LED turn light
- ✗ Digital speedometer
- ✗ CBS - combined braking system
- ✗ EFI electronic fuel injection
- ✗ Engine type: 1 cylinder, 4 stroke, air cooled
- ✗ Displacement: 124,8 cc
- ✗ Max power: 8,3 kw / 8500 rpm
- ✗ Ignition: ECU
- ✗ Brakes front/rear: disc/disc
- ✗ Unloaded mass of the vehicle: 134 kg
- ✗ Dimensions: 2020x910x1105mm
- ✗ Fuel tank capacity: 14 l ±0,2 l
- ✗ Consumption: 2,7 l/100km
- ✗ CO₂-Emission: 62 g/km



BX 125



BX 125 Grey

Brixton at its best – either with stylish 2-colour-painting or in classic British Racing Green combined with a perfectly matching brown leather seat. From a technical perspective, the traditionally shaped bike comes with state-of-the-art equipment such as LED daylight running lights, LED turn signals, a digital speedometer, dual disc brake system with CBS and of course electronic fuel injection system.

DE/ BRIXTON at its best! Entweder in stylischer Zweifarbenlackierung oder im beliebten British Racing Green mit brauner Sitzbank. Dazu passend ist die BX 125 mit moderner Technik wie LED-Tagfahrlicht und -Blinker, Digitaltachometer, zwei kräftige Scheibenbremsen mit CBS und natürlich auch mit elektronischer Einspritzung ausgestattet.

IT/ BRIXTON at its best! Bella nella versione bicolore o nel amato British Racing green con la sella marrone. Non mancano i componenti tecnici di ultima generazione come, fari - frecce a led, strumento digitale, potentissimi freni a disco con il nuovo sistema CBS, e iniezione elettronica.



BRIXTON'S OTHER FAMILY MEMBERS

BX 125 X



- LED daylight ✕
- LED turn light ✕
- Digital speedometer ✕
- CBS - combined braking system ✕
- EFI electronic fuel injection ✕
- Engine type: ✕
- 1 cylinder, 4 stroke, air cooled ✕
- Displacement: 124,8 cc ✕
- Max power: 8,3 kw / 9000 rpm ✕
- Ignition: ECU ✕
- Brakes front/rear: disc/disc ✕
- Unloaded mass of the vehicle: 134 kg ✕
- Dimensions: 2020x910x1105mm ✕
- Fuel tank capacity: 14 l ±0,2 l ✕
- Consumption: 2,7 l/100km ✕
- CO₂-Emission: 63 g/km ✕



BX 125 X
Green



BX 125 R
Red

- ✕ LED daylight
- ✕ LED turn light
- ✕ Digital speedometer
- ✕ CBS - combined braking system
- ✕ EFI electronic fuel injection
- ✕ Engine type:
- 1 cylinder, 4 stroke, air cooled
- ✕ Displacement: 124,8 cc
- ✕ Max power: 8,3 kw / 9000 rpm
- ✕ Ignition: ECU
- ✕ Brakes front/rear: disc/disc
- ✕ Unloaded mass of the vehicle: 134 kg
- ✕ Dimensions: 2020x730x1040mm
- ✕ Fuel tank capacity: 14 l ±0,2 l
- ✕ Consumption: 2,7 l/100km
- ✕ CO₂-Emission: 62 g/km

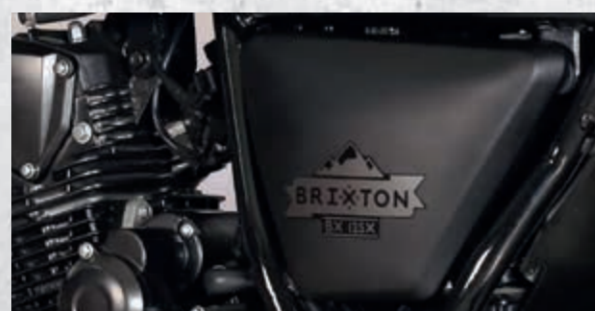
BX 125 R



2 COLOUR
OPTIONS



BX 125 X
Black



2 COLOUR
OPTIONS



BX 125 R
Silver

BX 125 X

Brixton goes offroad! The Scrambler variant of the popular BX steps up in two entirely new matt colours. Matt black as well as matt green live up to the expectations of "bad boy" and adventurers around the planet. In addition, to the comprehensive standard equipment, the Scrambler features long lasting lugged tyres, a protective grid for the front light, a windshield and a rear suspension which was extended by more than 2 centimetres. A matt black exhaust system as well as the Union-Jack-styled knee pads also form a key part of features completing the BX 125 X.

DE/ Brixton goes offroad! Il Scrambler si presenta con due colori opachi. Nero opaco e verde opaco si lanciano per qualsiasi avventura. Oltre gli accessori di serie monta anche dei copertoni tassellati, protezione faro, cupolino e ammortizzatori post di 2 cm più lunghi. La marmitta nera e i cuscini in stile Union Jack sul serbatoio completano il nostro Scrambler.



BX 125 R

With the BX 125R the first Cafe Racer is brought onto the streets by Brixton. Stub handlebars, passenger seat cover, a windshield together with a brand-new exhaust system and onroad tyres make you look a winner in every starting grid. The 125R is available in stylish silver as well as superfast red.

DE/ Mit der BX 125 R bringt BRIXTON einen Cafe Racer auf die Straße. Stummellenker, Soziussitzabdeckung, Windschild, Straßenbereifung und eine neue Auspuffanlage lassen dich in jeder Startaufstellung gut aussehen. Erhältlich ist die BX 125 R in stilischem Silber und schnellerem Rot.

IT/ La BX 125 R è il nostro Cafe Racer, con manubrio basso, copri sella, cupolino, copertoni stradali e una marmitta diversa e pronta per la pista. I colori disponibili sono silver e rosso corsa.



see more at:
www.brixton-motorcycles.com
contact ksr group:
office@ksr-group.com