

### Float Kit

This kit provides a replacement float and inlet needle for use on Walbro LMC carburetors.

	<p><b>! WARNING</b></p> <p>Accidental Starts can cause severe injury or death. Disconnect and ground spark plug lead(s) before servicing.</p>
--	---

*Disabling engine. Accidental starting can cause severe injury or death. Before working on the engine or equipment, disable the engine as follows:*

- 1) Disconnect the spark plug lead(s).
- 2) Disconnect negative (-) battery cable from battery.

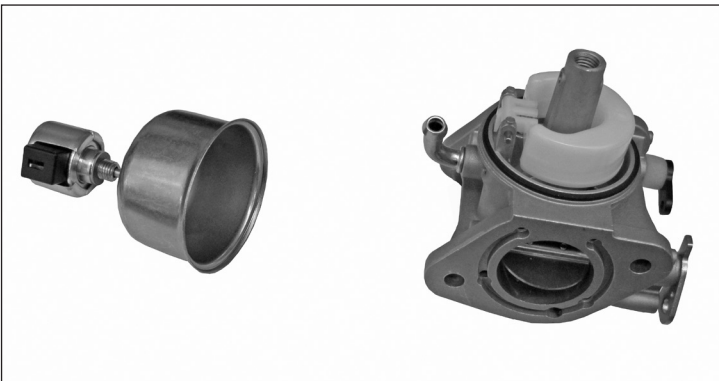
### This Kit Contains –

Qty.	Description
1	Float
1	Valve, Inlet Needle
1	Pin, Float
1	Gasket, Carburetor Bowl
1	Gasket, Solenoid
1	Gasket, Carburetor
1	Gasket, Air Cleaner Base
1	Installation Instructions

### To Install –

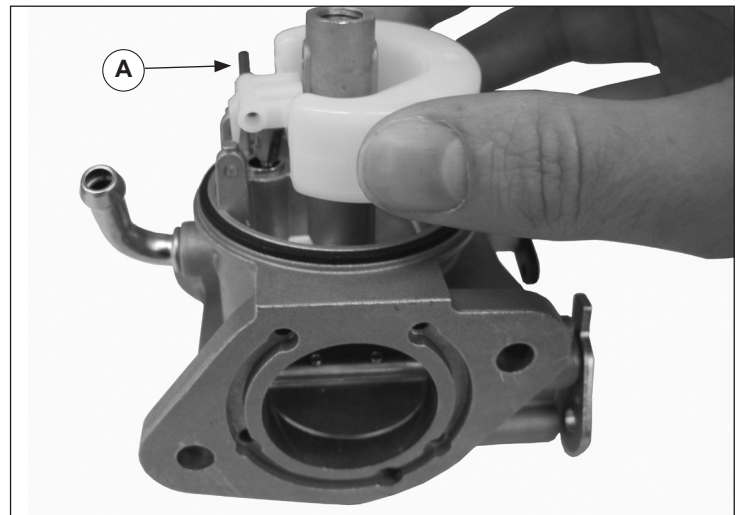
**NOTE:** These instructions cover installation of the kit components after the carburetor has been removed from the engine. Refer to the appropriate service manual for accessing, removal, and reinstallation of carburetor.

1. Clean the exterior surfaces of dirt or foreign material before disassembling the carburetor. Unseat the clamp and disconnect the accelerator pump hose (if so equipped), from the upper fitting. Remove the fuel shutdown solenoid and carefully separate the fuel bowl from the carburetor. Discard the carburetor bowl gasket and solenoid gasket. Transfer any remaining fuel into an approved container. See Figure 1.



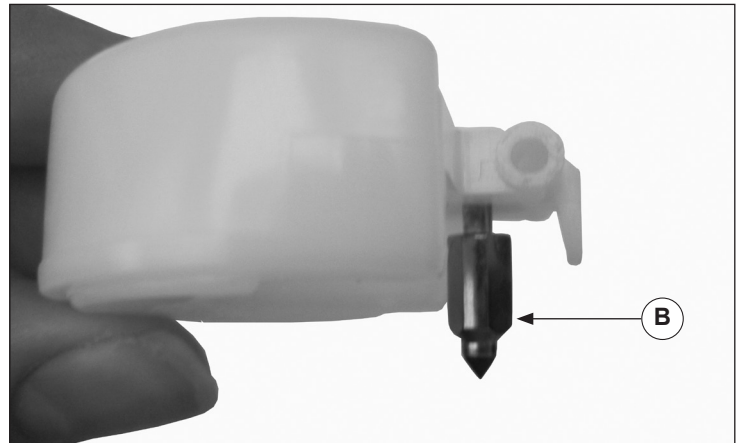
**Figure 1. Fuel Bowl Removed From Carburetor.**

2. Remove the float pin (A) and lift out the old float, pin, and inlet needle. See Figure 2. Discard all of the parts. The seat for the inlet needle is not serviceable, and should not be removed.



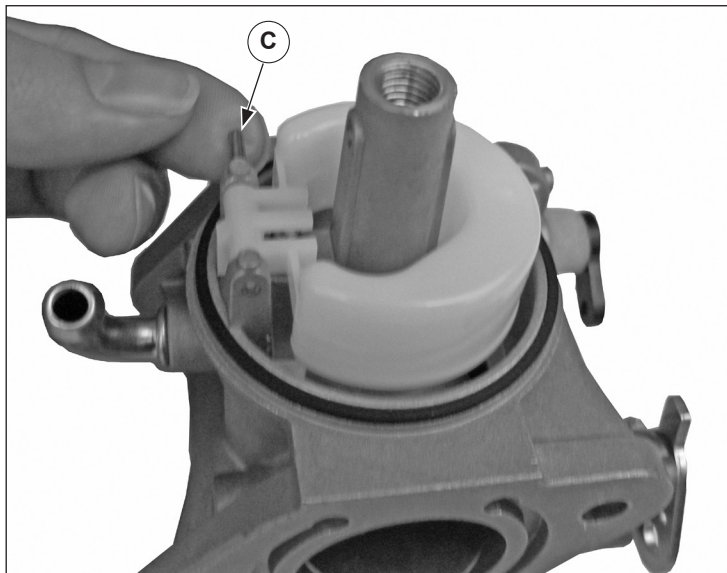
**Figure 2. Removing Float and Inlet Needle.**

3. Clean the carburetor bowl and inlet needle seat areas as required, before installation of new parts.
4. Slide the inlet needle into the groove of float with the needle valve hanging **down** (B). See Figure 3.



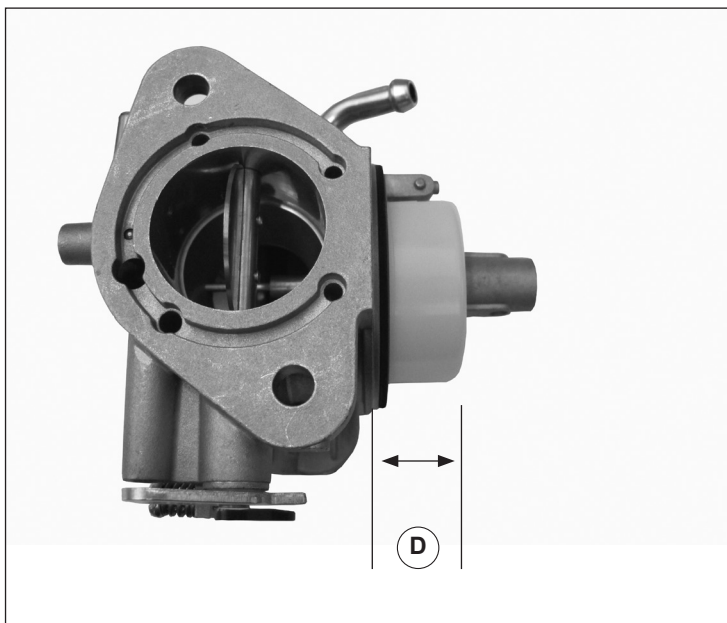
**Figure 3. Float and Inlet Needle.**

5. Install the float and inlet needle down into the seat and carburetor body. Insert the new float pin (C) through the float hinge, centering the pin between the two posts. See Figure 4.



**Figure 4. Installing Float Assembly.**

6. Hold the carburetor with the float assembly up. Do not push down on the float. Check the float height adjustment.
7. The correct float height adjustment (D) is **14 mm (0.55 in.)** measured from the float bottom to the body of the carburetor. See Figure 5.



**Figure 5. Checking Float Height.**

**NOTE:** Be sure to measure from the casting surface, not the rubber gasket, if still attached.

8. Carefully reinstall the fuel bowl, with the new bowl gasket in place, onto the carburetor. Install the new solenoid gasket on the solenoid. Secure the bowl with the solenoid. Torque the solenoid to **5.0 ± 0.5 N·m (45 ± 5 in. lb.)**. Reattach the accelerator pump hose (if so equipped), and secure with the clip. See Figure 6.



**Figure 6. Installing Fuel Bowl.**

9. Reinstall the carburetor using the appropriate new carburetor and air cleaner base gaskets. Refer to the service manual as required.
10. Reconnect the spark plug lead(s), negative (-) battery cable, and test run the engine.