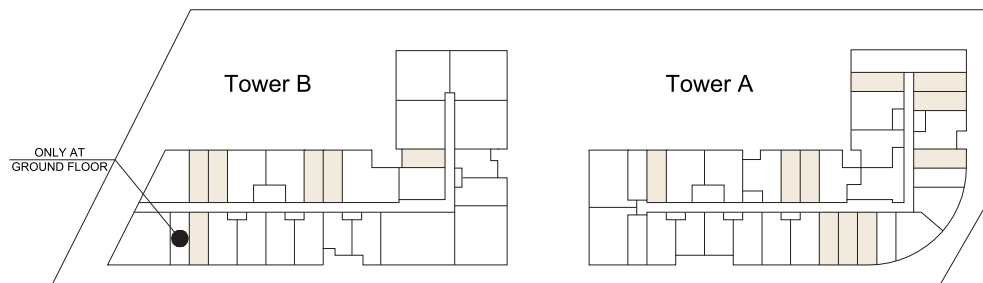
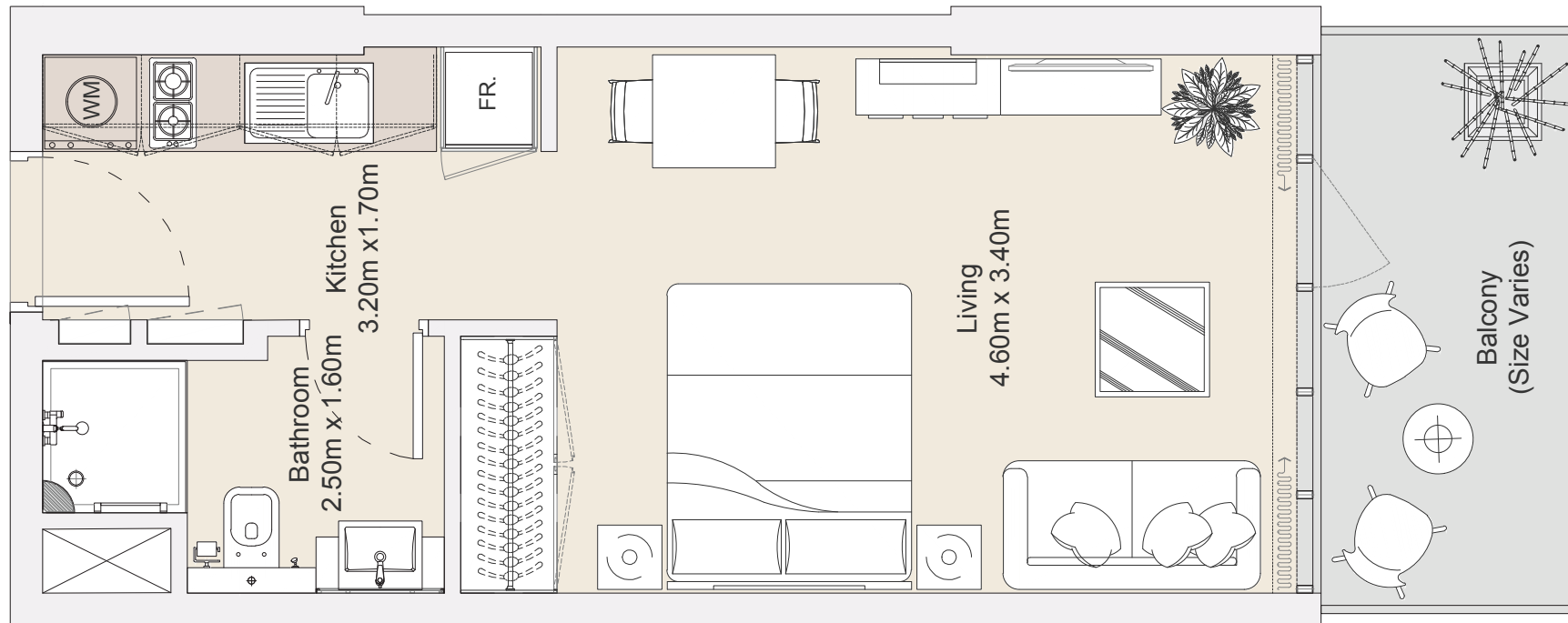


# Floor Plans



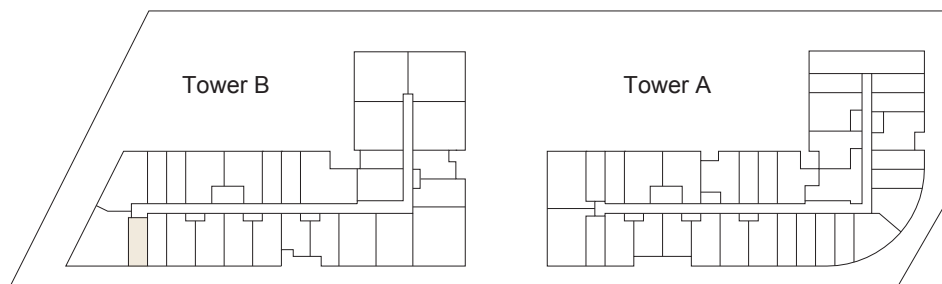
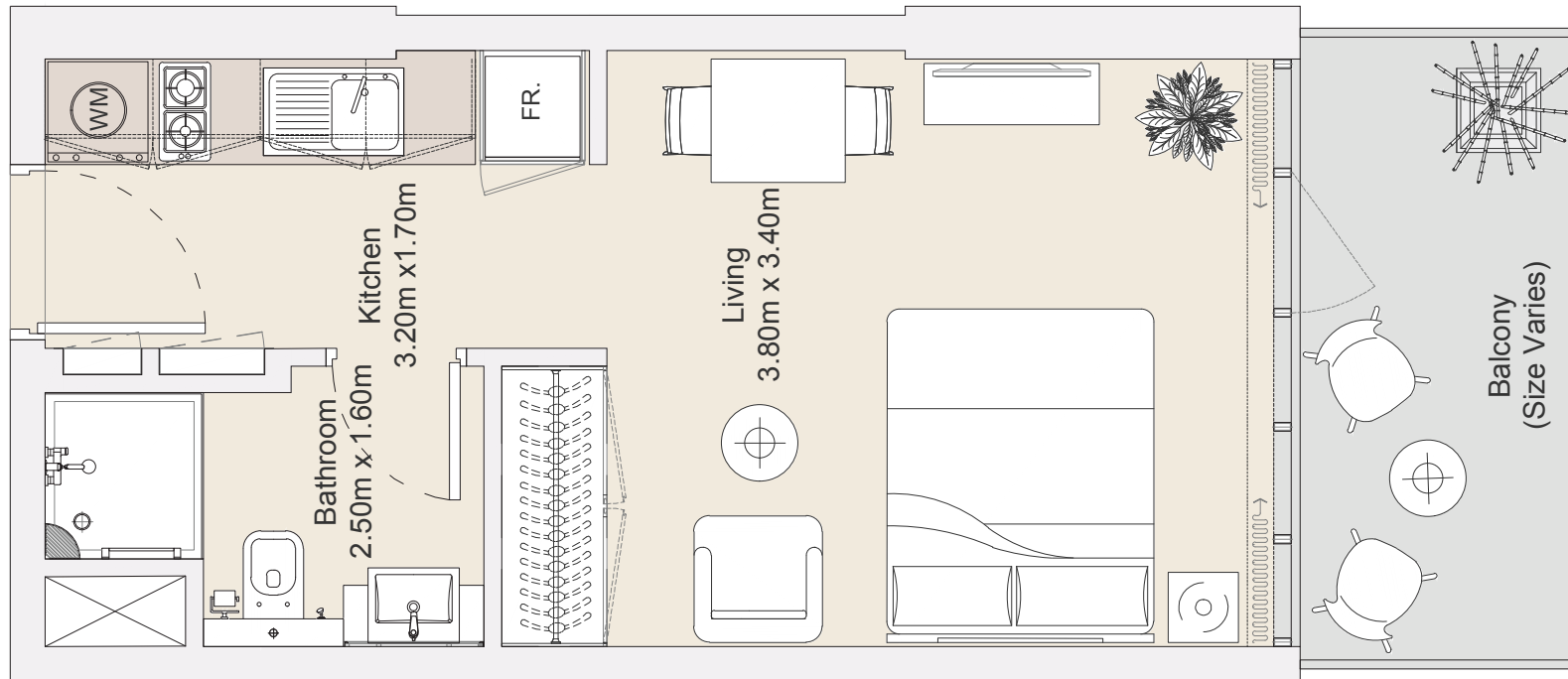
## STD | Type A

Typical Floor Plan from Ground to 12<sup>th</sup> Floors

Internal Area	302.65 sq.ft
Outdoor Area	66.63 sq.ft
<b>Total Area</b>	<b>369.28 sq.ft</b>

All drawings and dimensions are approximate. Drawings are not to scale and are subject to change without notice. The developer reserves the right to make revisions. The units are measured at typical floors in the building and columns may vary in size depending on the floor level. The furnishing and accessories shown are for representation only. The availability, length and width of the balcony varies depending on which floor and which orientation the unit is located within the building. There will be slight differences in the internal areas between the same unit types depending on the shaft sizes that go through the units.



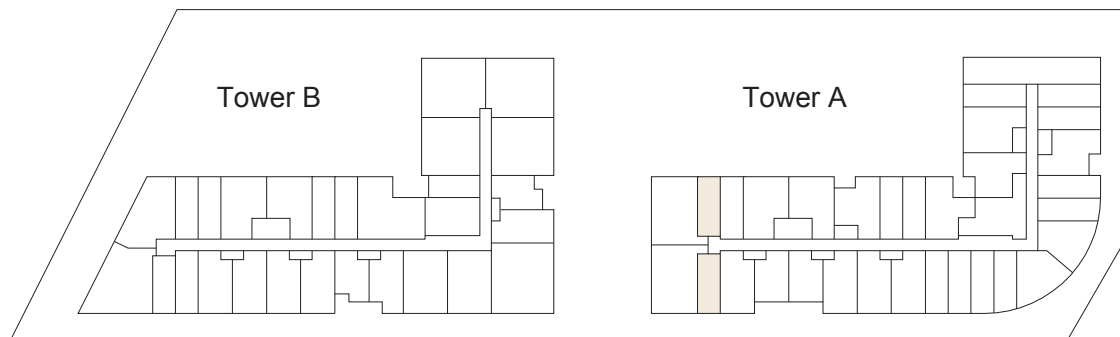
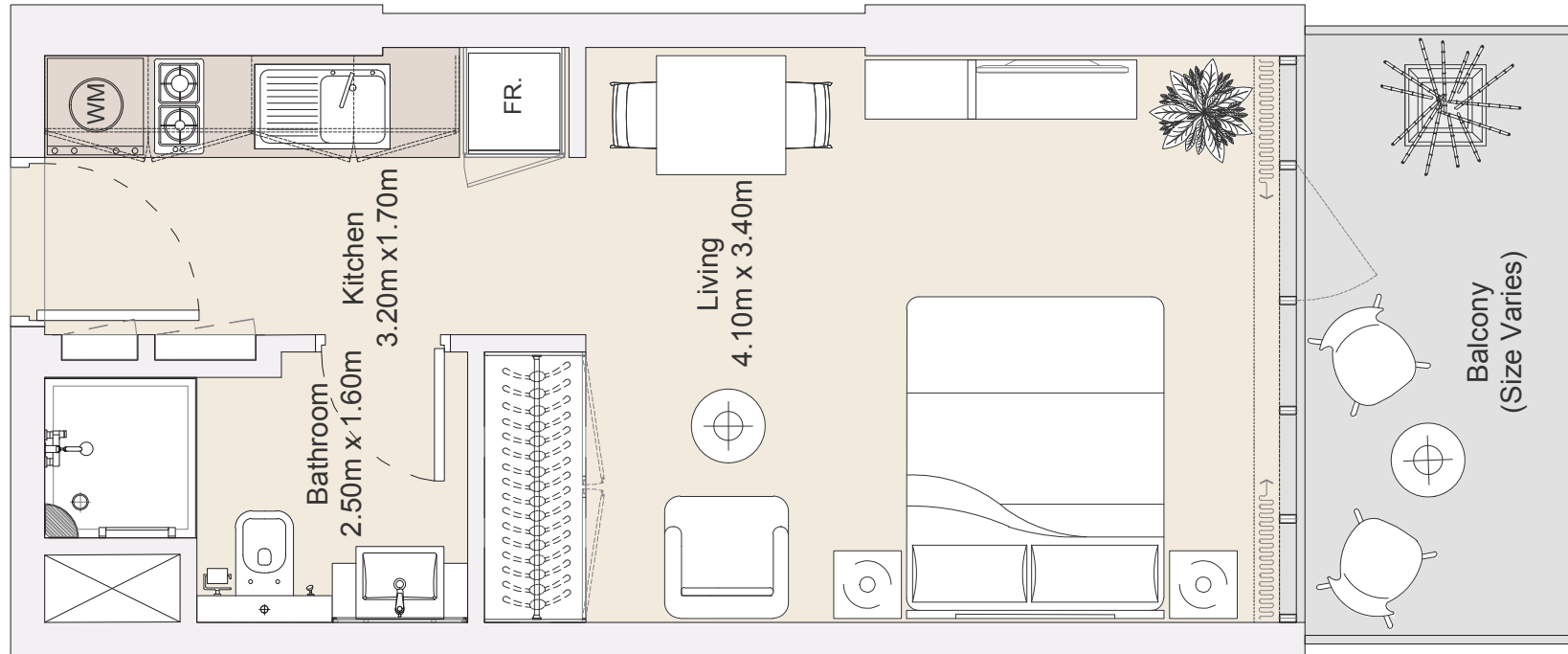


## STD | Type B

Typical Floor Plan from 1<sup>st</sup> to 12<sup>th</sup> Floors

Internal Area	271.64 sq.ft
Outdoor Area	62.93 sq.ft
<b>Total Area</b>	<b>334.57 sq.ft</b>

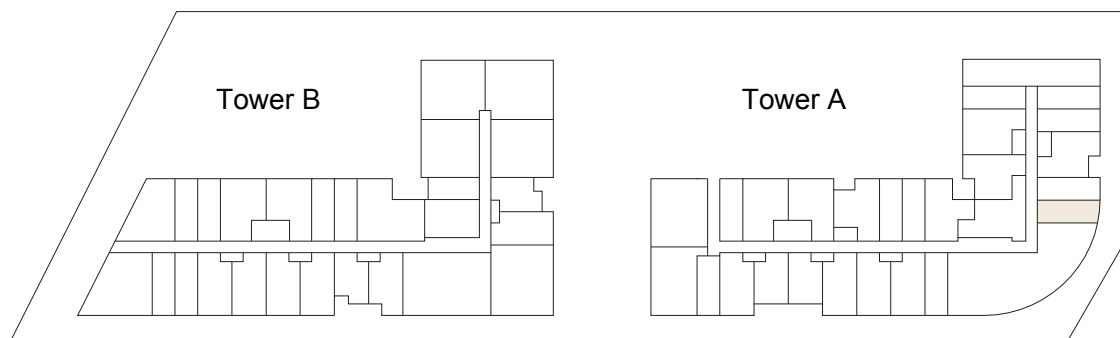
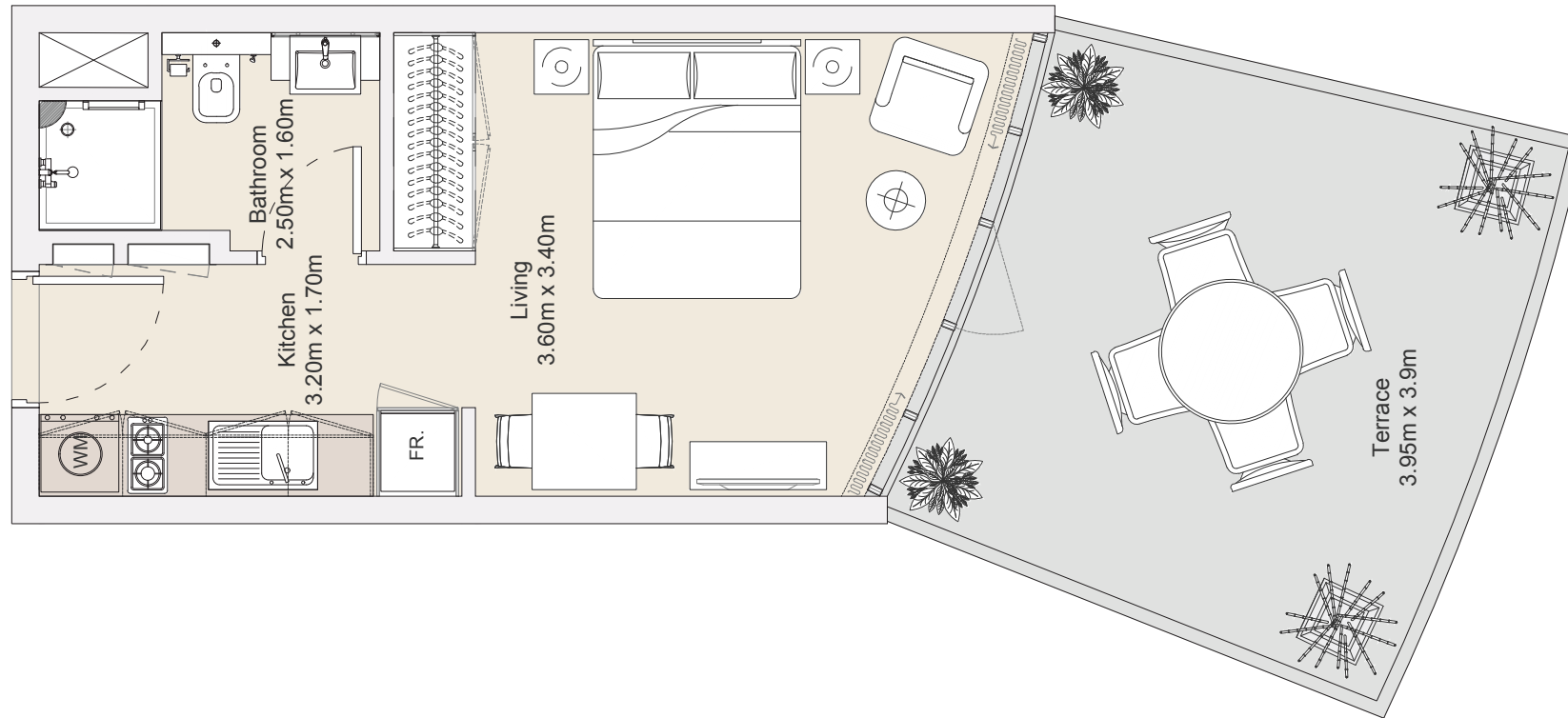
All drawings and dimensions are approximate. Drawings are not to scale and are subject to change without notice. The developer reserves the right to make revisions. The units are measured at typical floors in the building and columns may vary in size depending on the floor level. The furnishing and accessories shown are for representation only. The availability, length and width of the balcony varies depending on which floor and which orientation the unit is located within the building. There will be slight differences in the internal areas between the same unit types depending on the shaft sizes that go through the units.



## STD | Type C

Typical Floor Plan from Ground to 12<sup>th</sup> Floors

Internal Area	282.70 sq.ft
Outdoor Area	68.49 sq.ft
<b>Total Area</b>	<b>351.19 sq.ft</b>

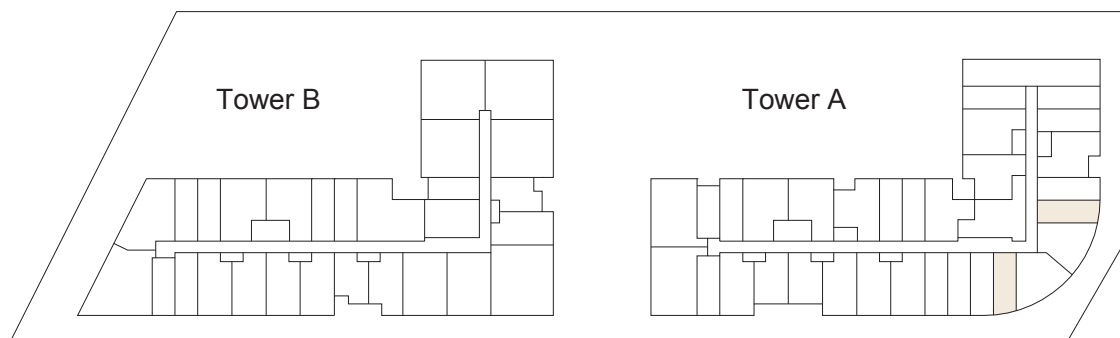
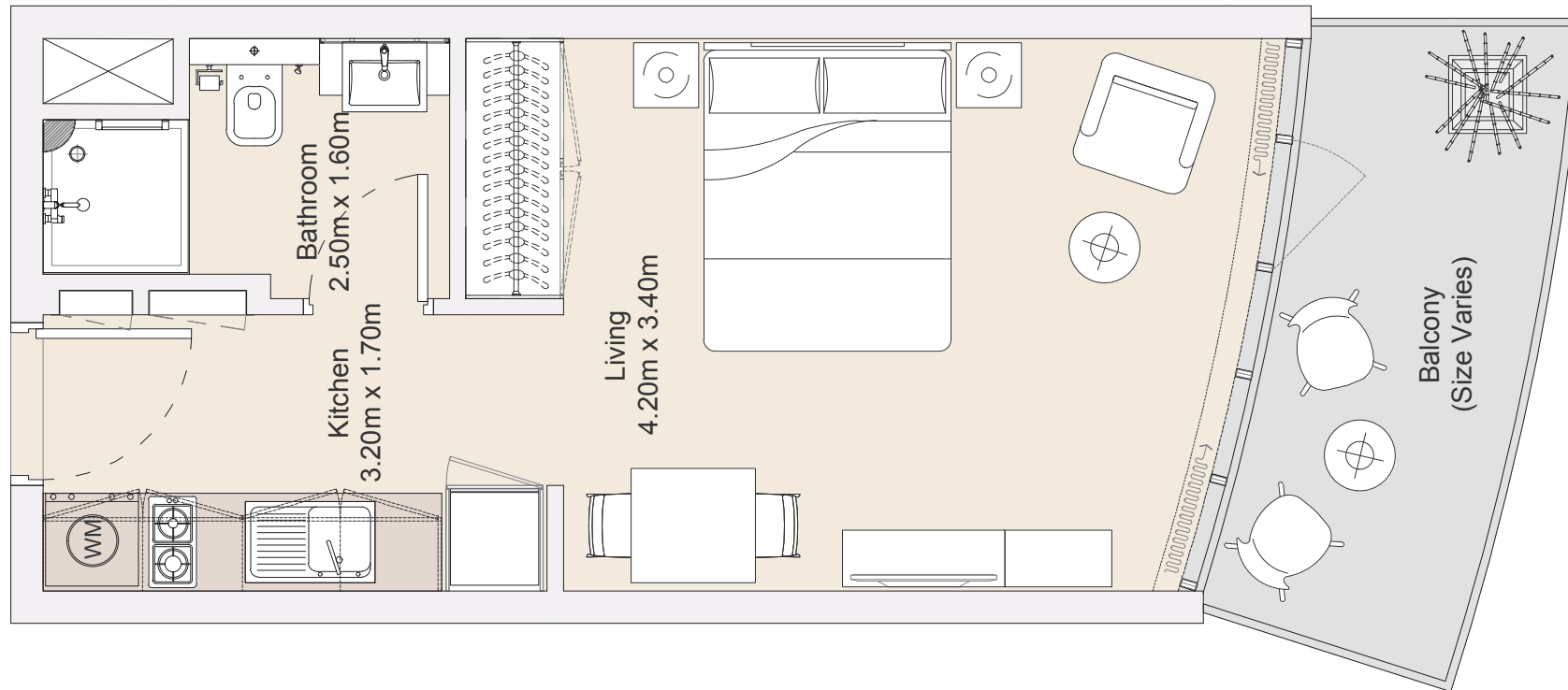


## STD | Type D

### Ground Floor

Internal Area	264.47 sq.ft
Outdoor Area	184.14 sq.ft
<b>Total Area</b>	<b>448.61 sq.ft</b>

All drawings and dimensions are approximate. Drawings are not to scale and are subject to change without notice. The developer reserves the right to make revisions. The units are measured at typical floors in the building and columns may vary in size depending on the floor level. The furnishing and accessories shown are for representation only. The availability, length and width of the balcony varies depending on which floor and which orientation the unit is located within the building. There will be slight differences in the internal areas between the same unit types depending on the shaft sizes that go through the units.

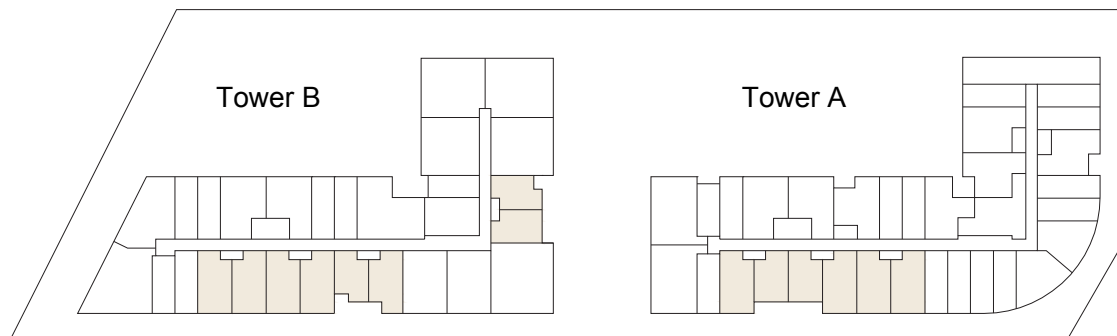
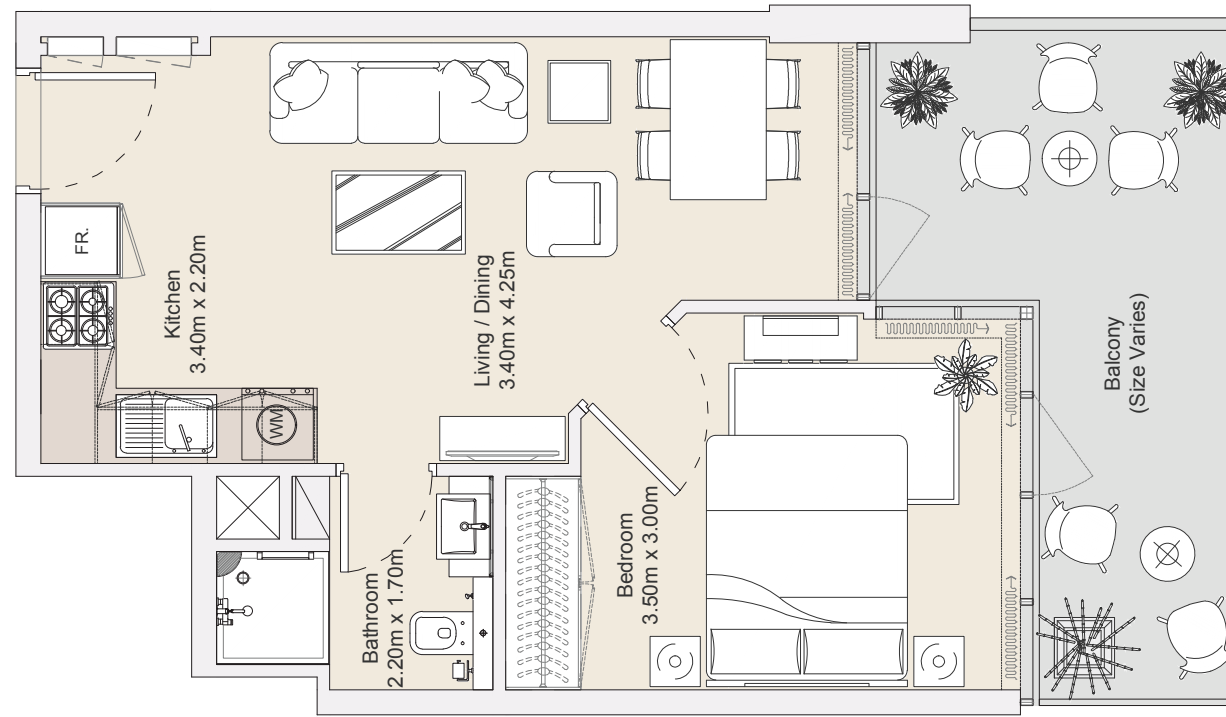


## STD | Type E

Typical Floor Plan from Ground to 12<sup>th</sup> Floors

Internal Area	288.88 sq.ft
Outdoor Area	72.84 sq.ft
<b>Total Area</b>	<b>361.72 sq.ft</b>

All drawings and dimensions are approximate. Drawings are not to scale and are subject to change without notice. The developer reserves the right to make revisions. The units are measured at typical floors in the building and columns may vary in size depending on the floor level. The furnishing and accessories shown are for representation only. The availability, length and width of the balcony varies depending on which floor and which orientation the unit is located within the building. There will be slight differences in the internal areas between the same unit types depending on the shaft sizes that go through the units.

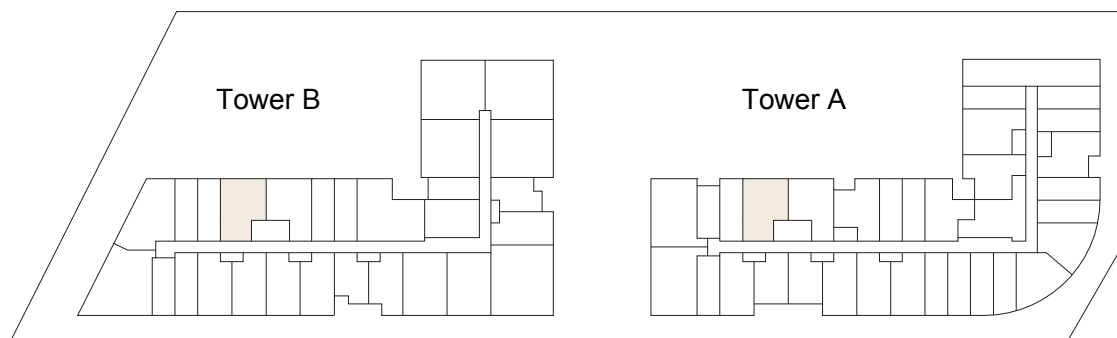
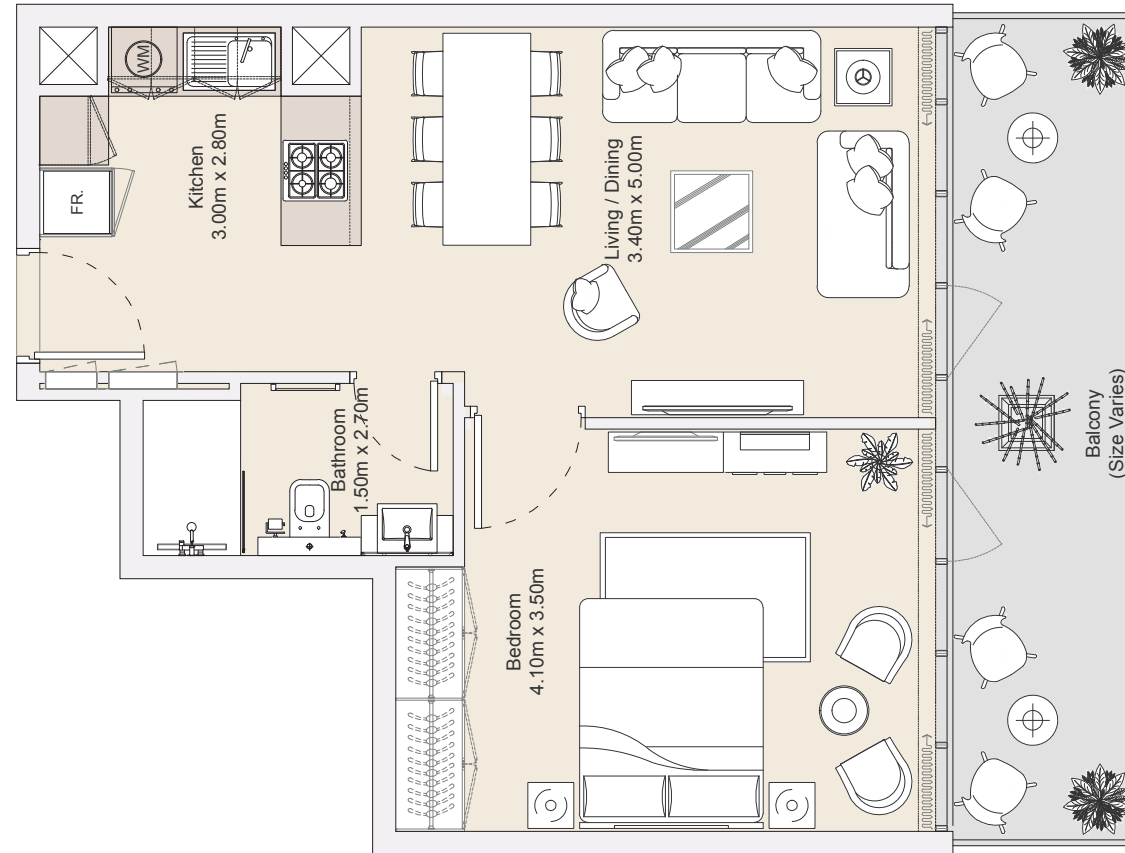


## J1B | Type A

Typical Floor Plan from Ground to 12<sup>th</sup> Floors

Internal Area	396.55 sq.ft
Outdoor Area	127.68 sq.ft
<b>Total Area</b>	<b>524.23 sq.ft</b>

All drawings and dimensions are approximate. Drawings are not to scale and are subject to change without notice. The developer reserves the right to make revisions. The units are measured at typical floors in the building and columns may vary in size depending on the floor level. The furnishing and accessories shown are for representation only. The availability, length and width of the balcony varies depending on which floor and which orientation the unit is located within the building. There will be slight differences in the internal areas between the same unit types depending on the shaft sizes that go through the units.

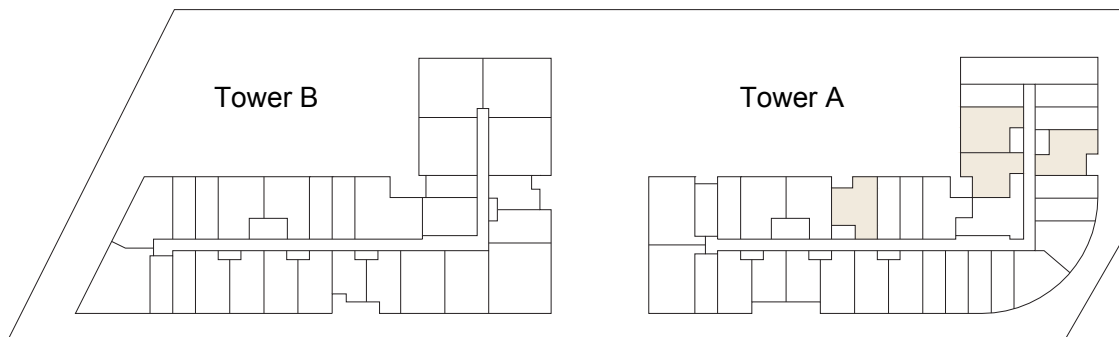
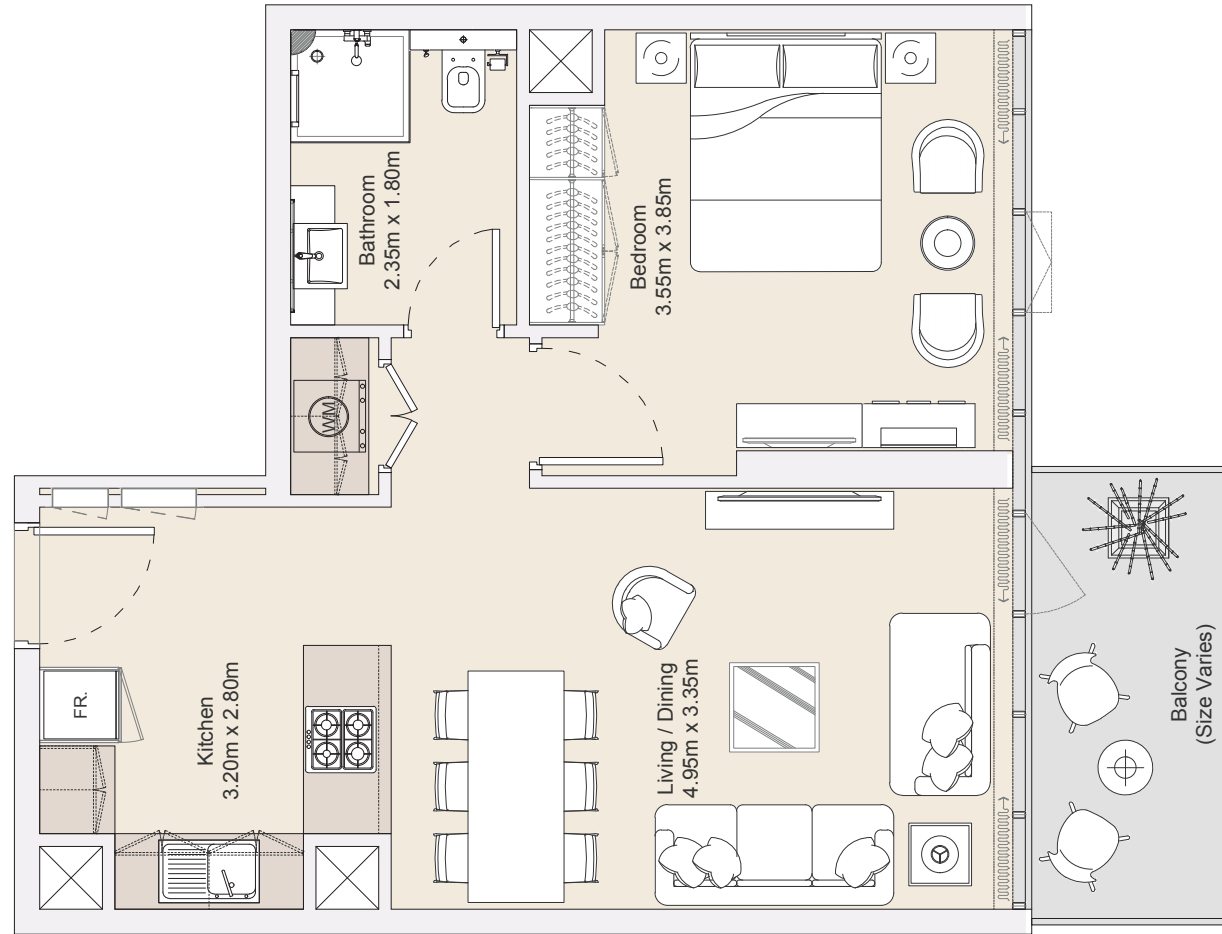


## 1B | Type A

Typical Floor Plan from 1<sup>st</sup> to 12<sup>th</sup> Floors

Internal Area	518.00 sq.ft
Outdoor Area	128.67 sq.ft
<b>Total Area</b>	<b>646.67 sq.ft</b>

All drawings and dimensions are approximate. Drawings are not to scale and are subject to change without notice. The developer reserves the right to make revisions. The units are measured at typical floors in the building and columns may vary in size depending on the floor level. The furnishing and accessories shown are for representation only. The availability, length and width of the balcony varies depending on which floor and which orientation the unit is located within the building. There will be slight differences in the internal areas between the same unit types depending on the shaft sizes that go through the units.

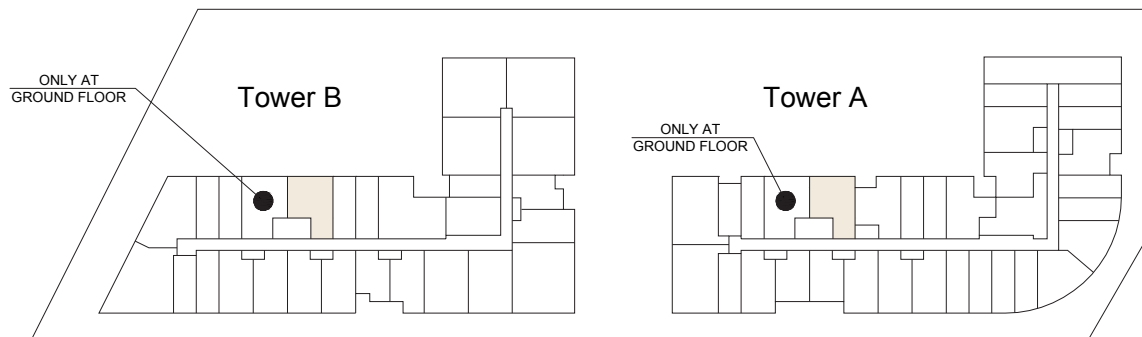
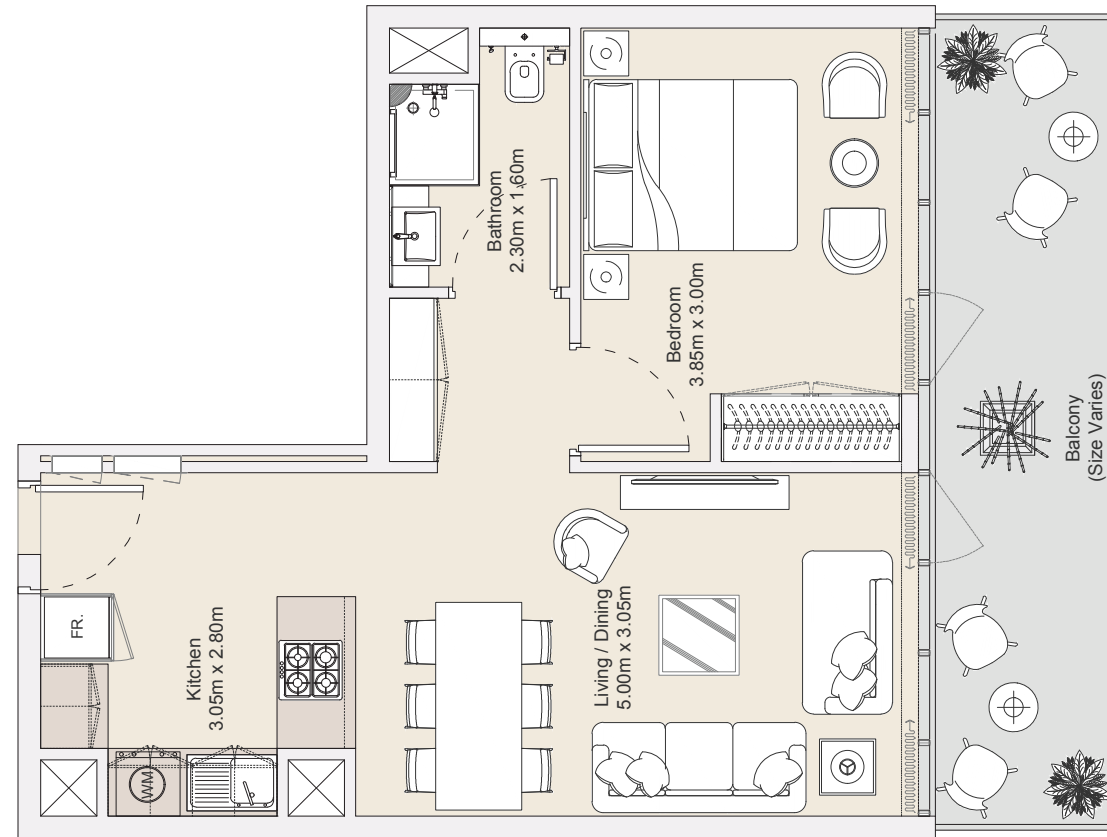


## 1B | Type B

Typical Floor Plan from Ground to 12<sup>th</sup> Floors

Internal Area	520.70 sq.ft
Outdoor Area	62.94 sq.ft
<b>Total Area</b>	<b>583.64 sq.ft</b>

All drawings and dimensions are approximate. Drawings are not to scale and are subject to change without notice. The developer reserves the right to make revisions. The units are measured at typical floors in the building and columns may vary in size depending on the floor level. The furnishing and accessories shown are for representation only. The availability, length and width of the balcony varies depending on which floor and which orientation the unit is located within the building. There will be slight differences in the internal areas between the same unit types depending on the shaft sizes that go through the units.



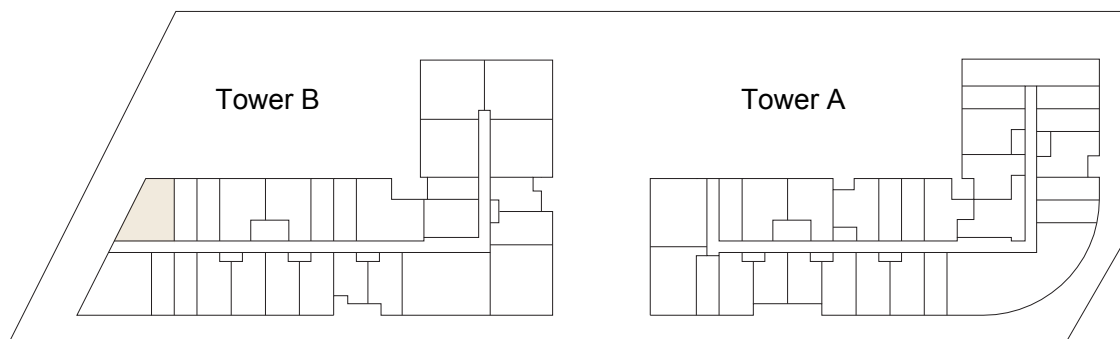
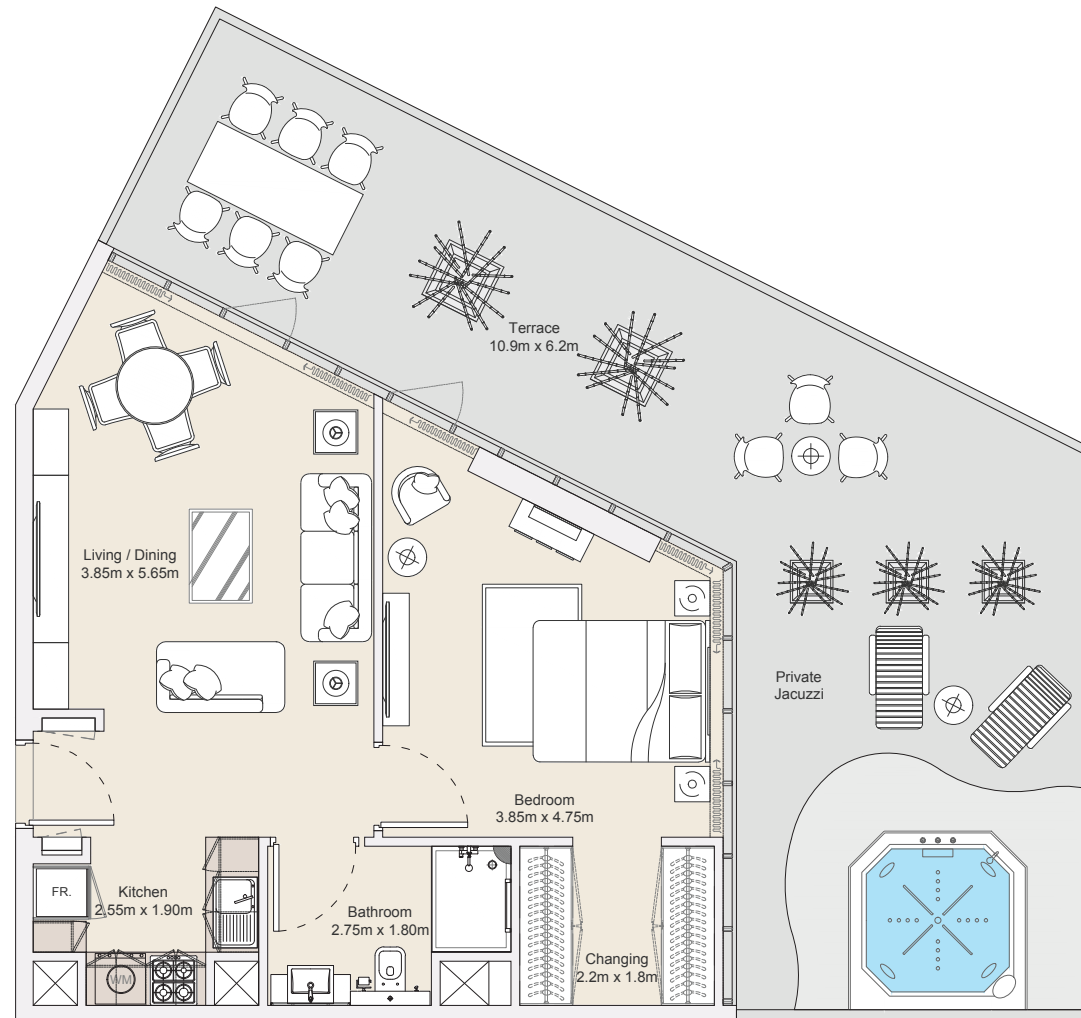
## 1B | Type C

Typical Floor Plan from Ground to 12<sup>th</sup> Floors

Internal Area	482.68 sq.ft
Outdoor Area	129.56 sq.ft
<b>Total Area</b>	<b>612.24 sq.ft</b>

All drawings and dimensions are approximate. Drawings are not to scale and are subject to change without notice. The developer reserves the right to make revisions. The units are measured at typical floors in the building and columns may vary in size depending on the floor level. The furnishing and accessories shown are for representation only. The availability, length and width of the balcony varies depending on which floor and which orientation the unit is located within the building. There will be slight differences in the internal areas between the same unit types depending on the shaft sizes that go through the units.



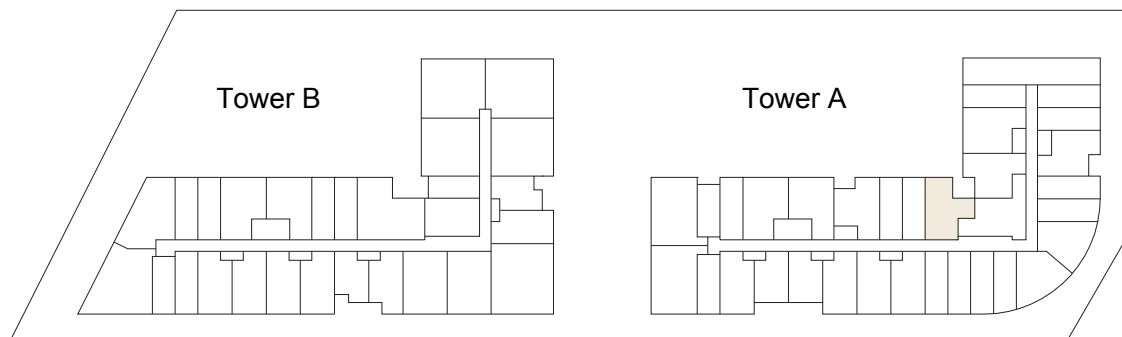
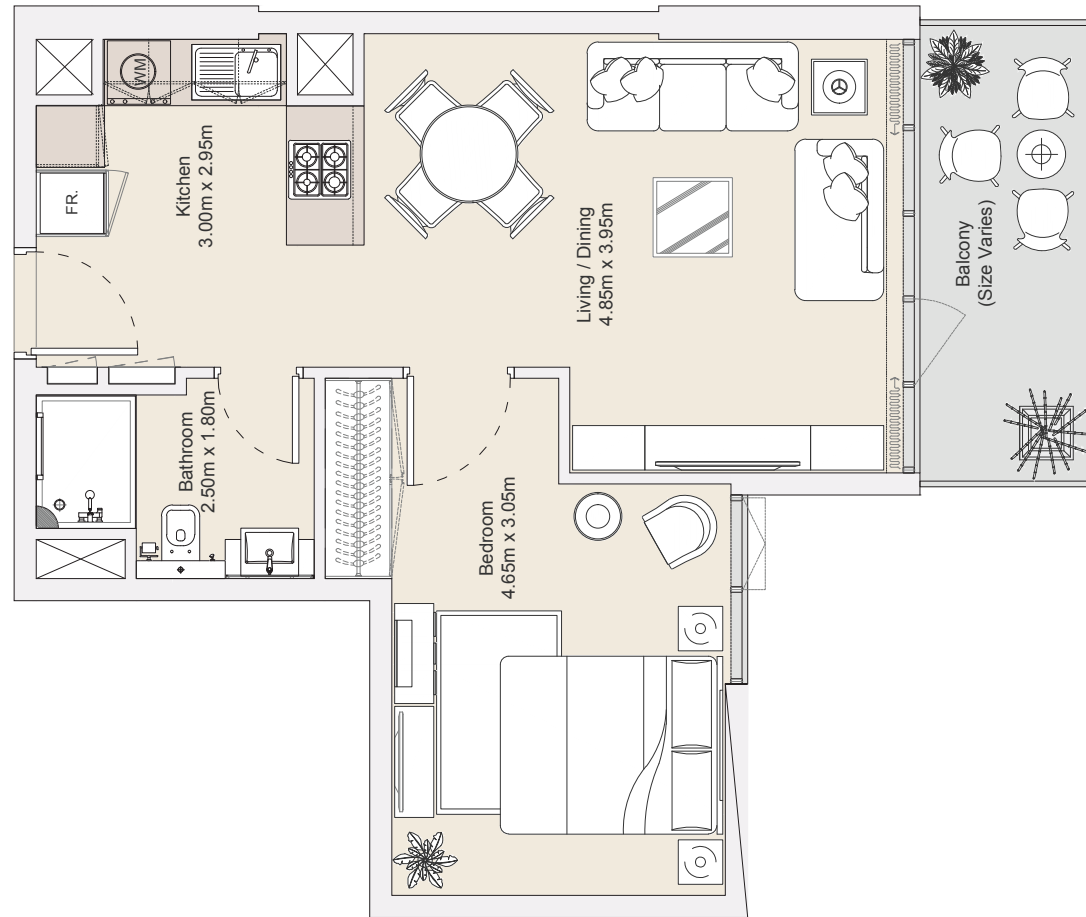


## 1B | Type D

### Ground Floor

Internal Area	579.24 sq.ft
Outdoor Area	556.68 sq.ft
<b>Total Area</b>	<b>1135.92 sq.ft</b>

All drawings and dimensions are approximate. Drawings are not to scale and are subject to change without notice. The developer reserves the right to make revisions. The units are measured at typical floors in the building and columns may vary in size depending on the floor level. The furnishing and accessories shown are for representation only. The availability, length and width of the balcony varies depending on which floor and which orientation the unit is located within the building. There will be slight differences in the internal areas between the same unit types depending on the shaft sizes that go through the units.

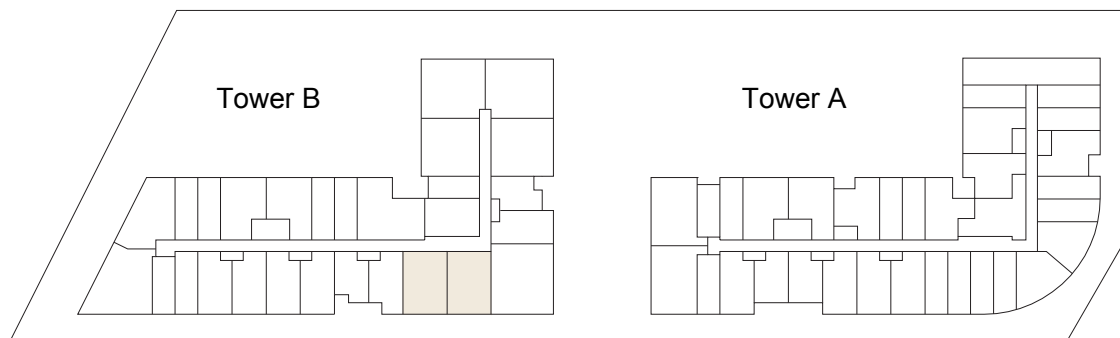
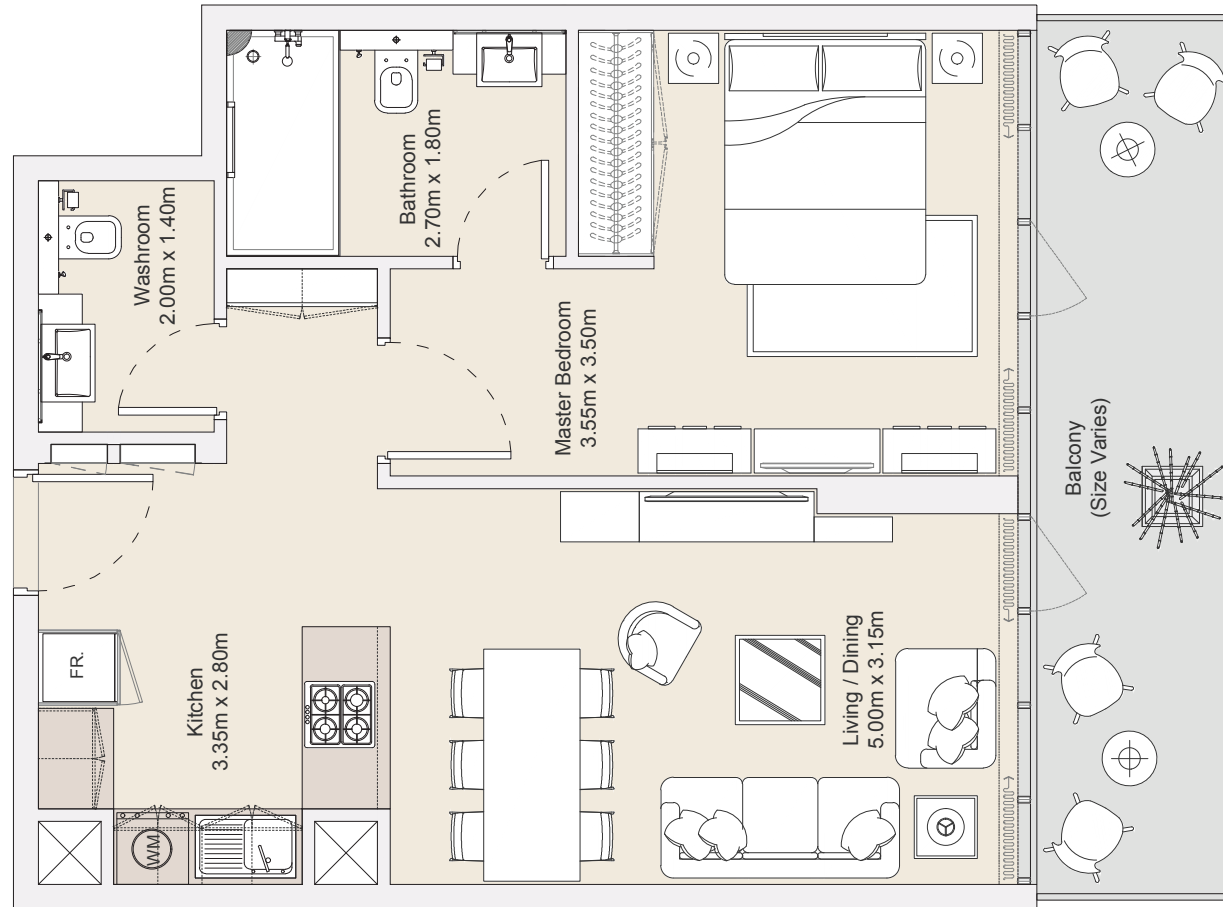


## 1B | Type E

Typical Floor Plan from Ground to 12<sup>th</sup> Floors

Internal Area	513.47 sq.ft
Outdoor Area	78.21 sq.ft
<b>Total Area</b>	<b>591.68 sq.ft</b>

All drawings and dimensions are approximate. Drawings are not to scale and are subject to change without notice. The developer reserves the right to make revisions. The units are measured at typical floors in the building and columns may vary in size depending on the floor level. The furnishing and accessories shown are for representation only. The availability, length and width of the balcony varies depending on which floor and which orientation the unit is located within the building. There will be slight differences in the internal areas between the same unit types depending on the shaft sizes that go through the units.

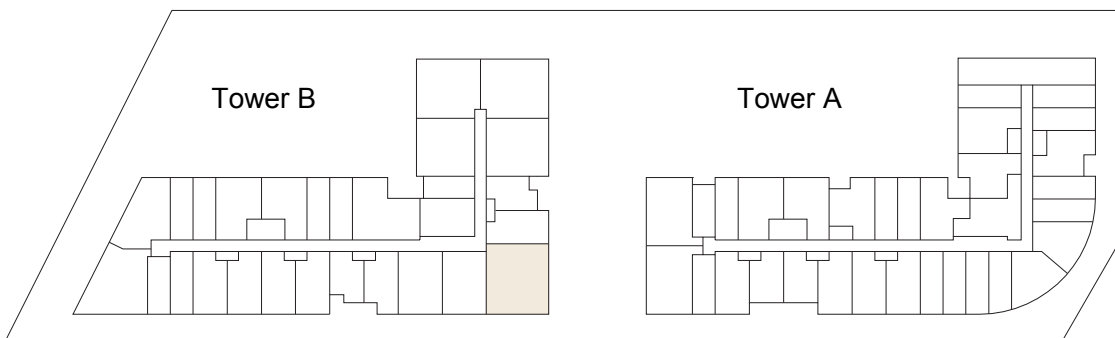
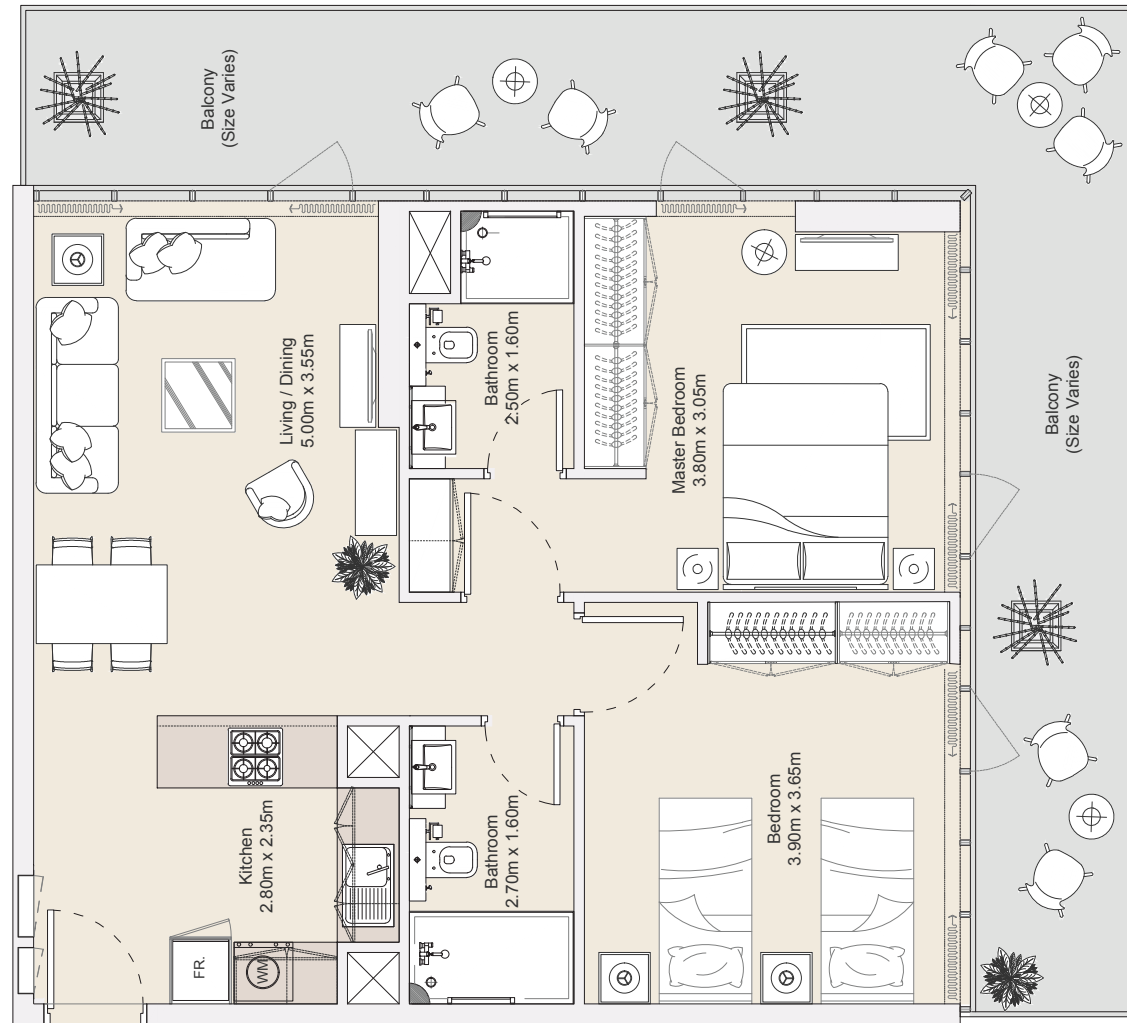


## 1B | Type F

Typical Floor Plan from 2<sup>nd</sup> to 12<sup>th</sup> Floors

Internal Area	571.28 sq.ft
Outdoor Area	125.87 sq.ft
<b>Total Area</b>	<b>697.15 sq.ft</b>

All drawings and dimensions are approximate. Drawings are not to scale and are subject to change without notice. The developer reserves the right to make revisions. The units are measured at typical floors in the building and columns may vary in size depending on the floor level. The furnishing and accessories shown are for representation only. The availability, length and width of the balcony varies depending on which floor and which orientation the unit is located within the building. There will be slight differences in the internal areas between the same unit types depending on the shaft sizes that go through the units.

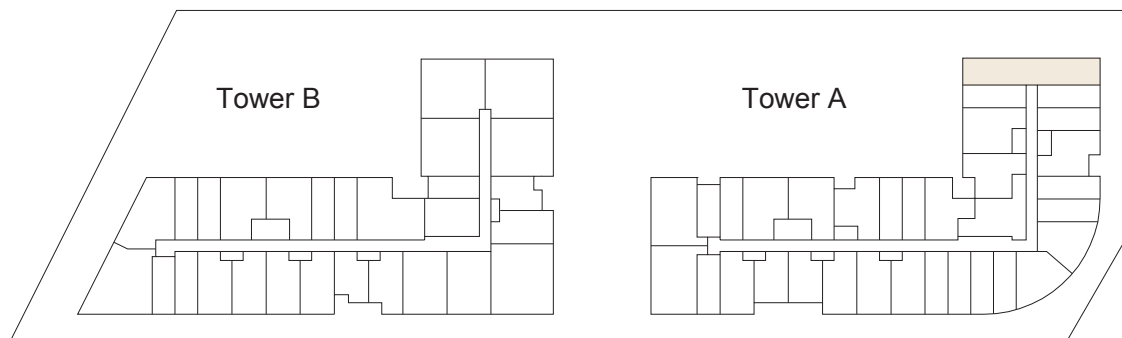
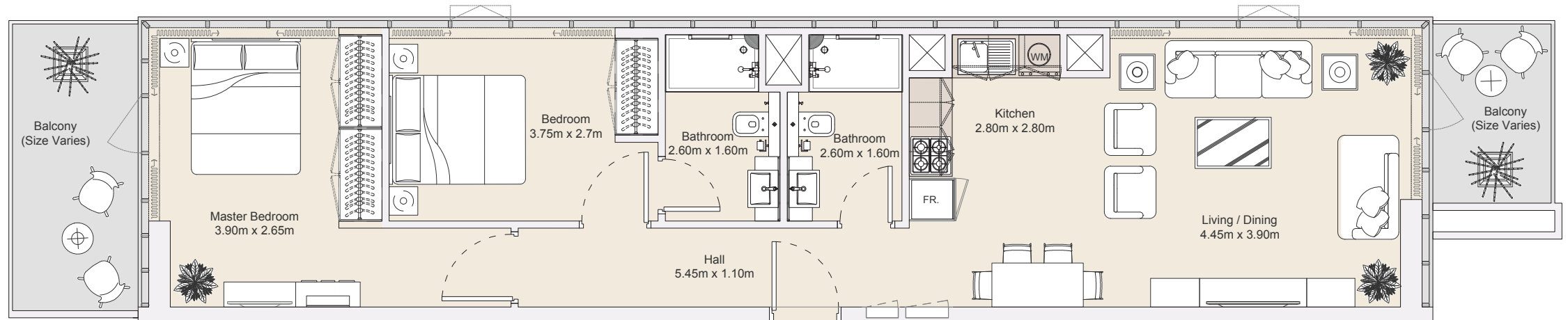


## 2B | Type A

Typical Floor Plan from Ground to 12<sup>th</sup> Floors

Internal Area	770.48 sq.ft
Outdoor Area	338.34 sq.ft
<b>Total Area</b>	<b>1108.82 sq.ft</b>

All drawings and dimensions are approximate. Drawings are not to scale and are subject to change without notice. The developer reserves the right to make revisions. The units are measured at typical floors in the building and columns may vary in size depending on the floor level. The furnishing and accessories shown are for representation only. The availability, length and width of the balcony varies depending on which floor and which orientation the unit is located within the building. There will be slight differences in the internal areas between the same unit types depending on the shaft sizes that go through the units.

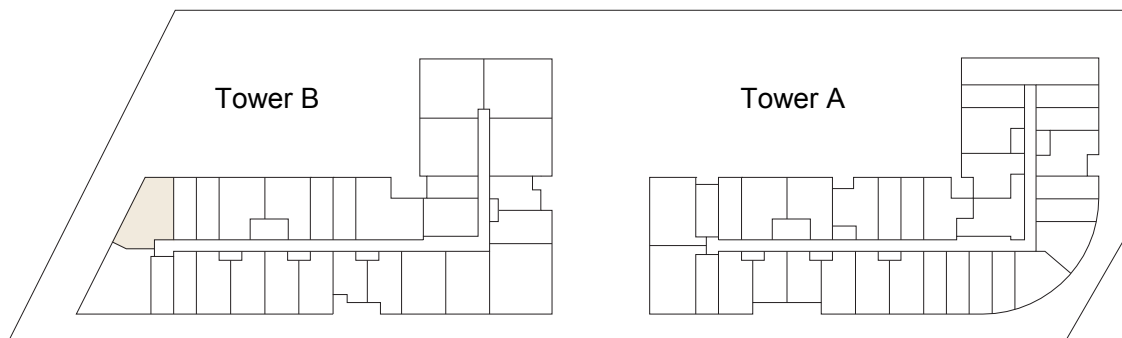
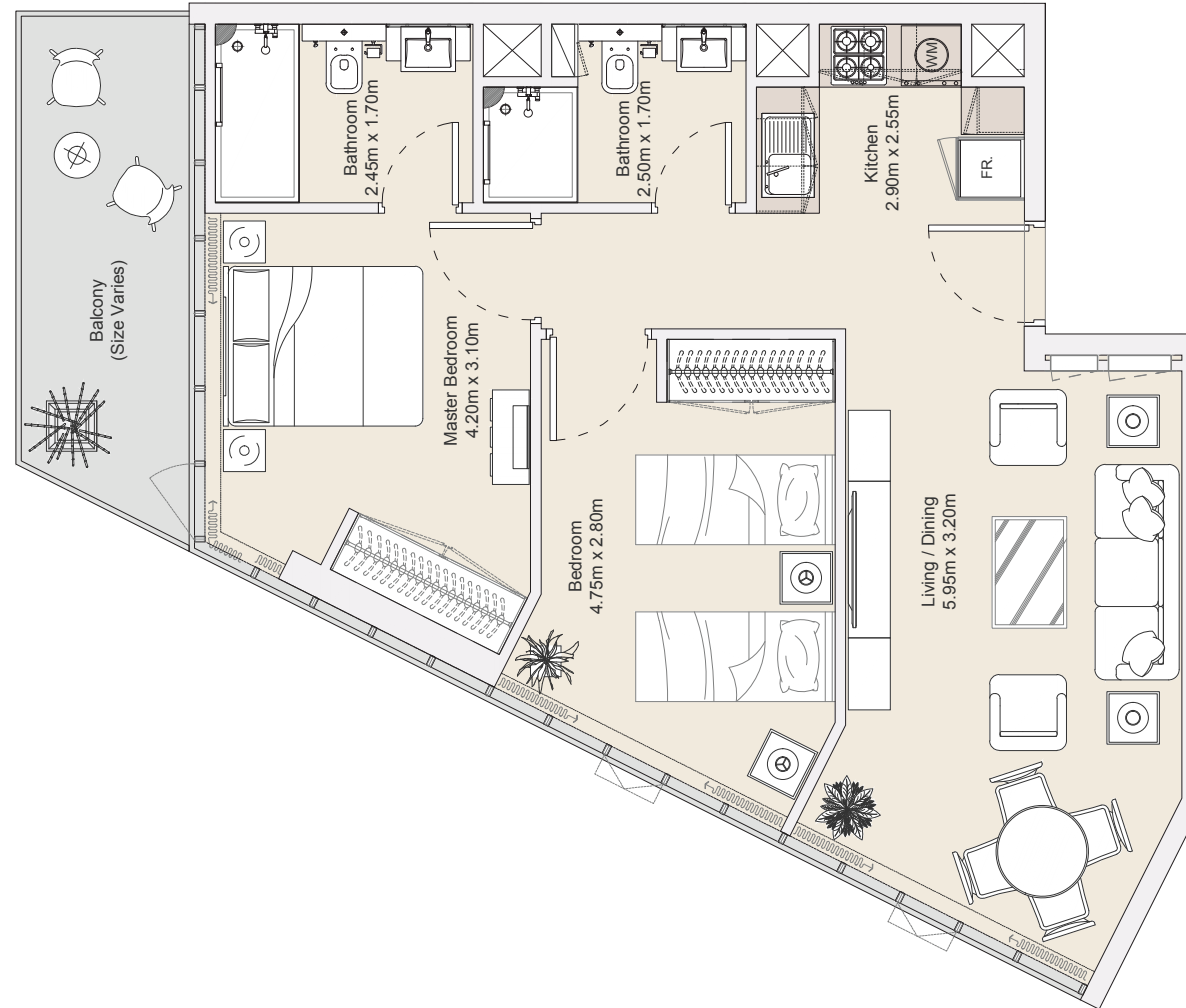


## 2B | Type B

Typical Floor Plan from 1<sup>st</sup> to 12<sup>th</sup> Floors

Internal Area	764.56 sq.ft
Outdoor Area	129.55 sq.ft
<b>Total Area</b>	<b>894.11 sq.ft</b>

All drawings and dimensions are approximate. Drawings are not to scale and are subject to change without notice. The developer reserves the right to make revisions. The units are measured at typical floors in the building and columns may vary in size depending on the floor level. The furnishing and accessories shown are for representation only. The availability, length and width of the balcony varies depending on which floor and which orientation the unit is located within the building. There will be slight differences in the internal areas between the same unit types depending on the shaft sizes that go through the units.

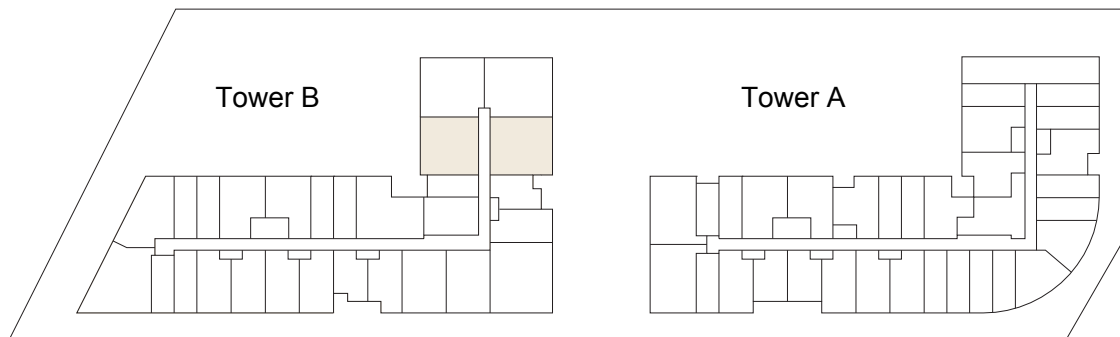
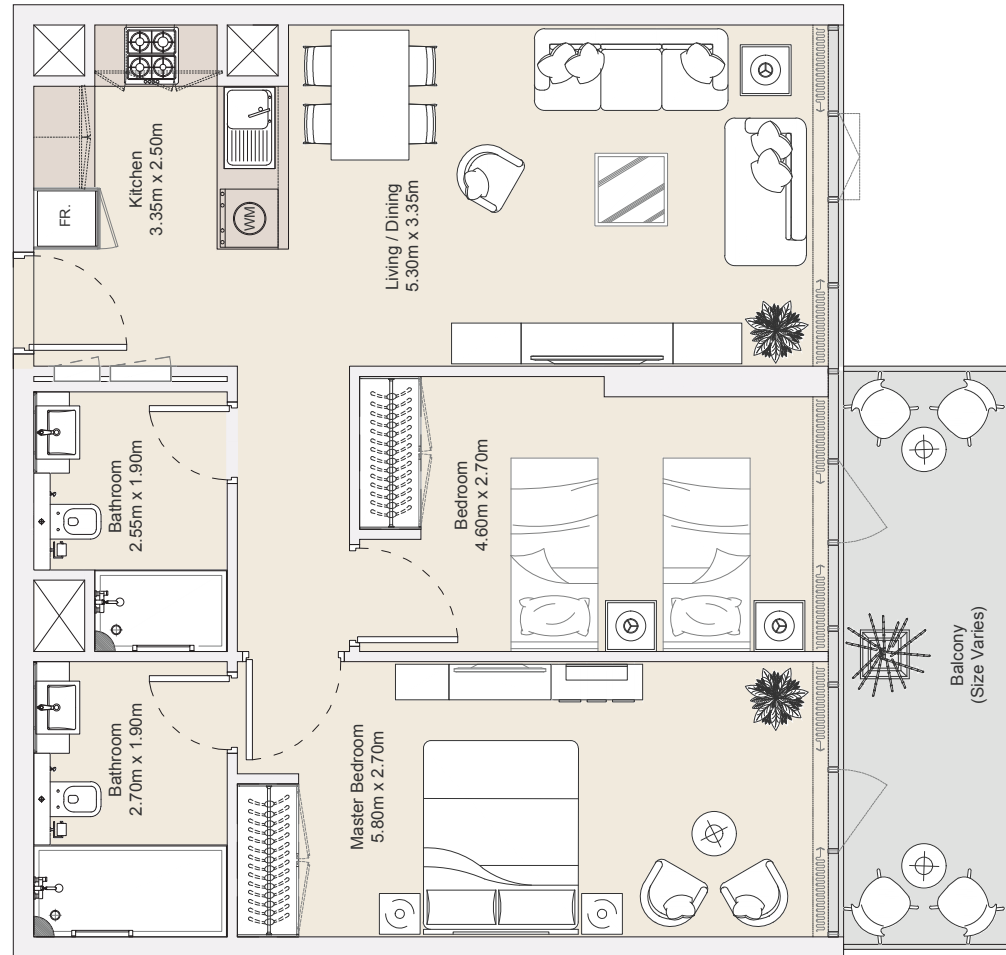


## 2B | Type C

Typical Floor Plan from 1<sup>st</sup> to 12<sup>th</sup> Floors

Internal Area	681.30 sq.ft
Outdoor Area	84.42 sq.ft
<b>Total Area</b>	<b>765.72 sq.ft</b>

All drawings and dimensions are approximate. Drawings are not to scale and are subject to change without notice. The developer reserves the right to make revisions. The units are measured at typical floors in the building and columns may vary in size depending on the floor level. The furnishing and accessories shown are for representation only. The availability, length and width of the balcony varies depending on which floor and which orientation the unit is located within the building. There will be slight differences in the internal areas between the same unit types depending on the shaft sizes that go through the units.

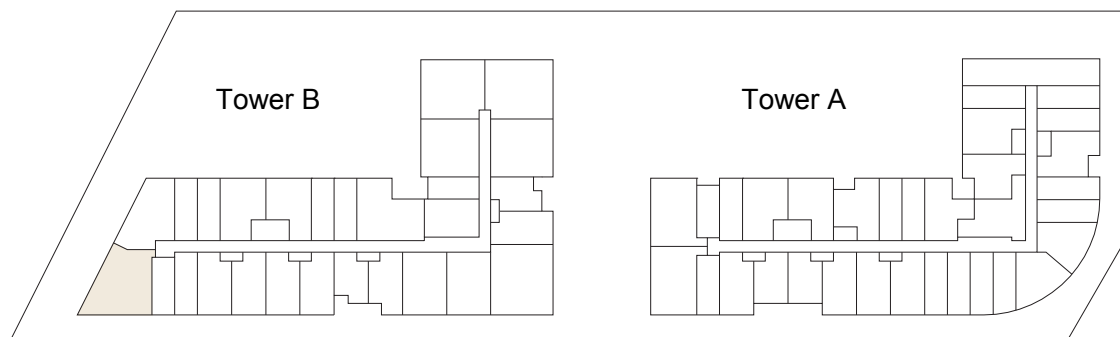


## 2B | Type D

Typical Floor Plan from Ground to 12<sup>th</sup> Floors

Internal Area	764.24 sq.ft
Outdoor Area	171.83 sq.ft
<b>Total Area</b>	<b>936.07 sq.ft</b>

All drawings and dimensions are approximate. Drawings are not to scale and are subject to change without notice. The developer reserves the right to make revisions. The units are measured at typical floors in the building and columns may vary in size depending on the floor level. The furnishing and accessories shown are for representation only. The availability, length and width of the balcony varies depending on which floor and which orientation the unit is located within the building. There will be slight differences in the internal areas between the same unit types depending on the shaft sizes that go through the units.



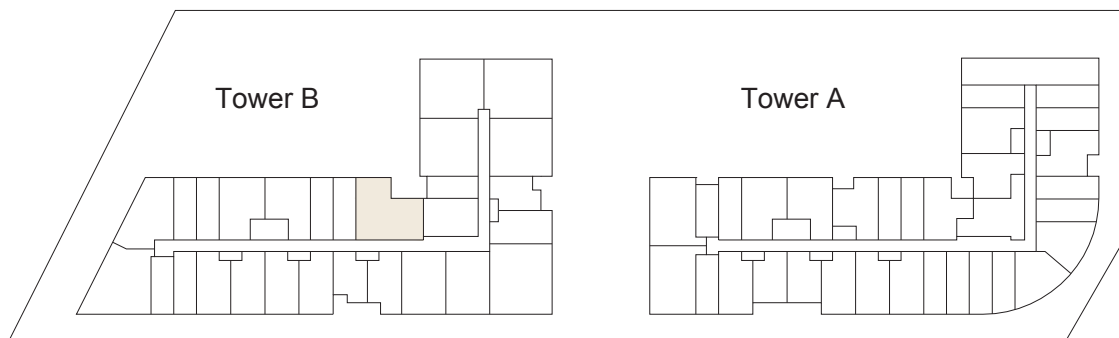
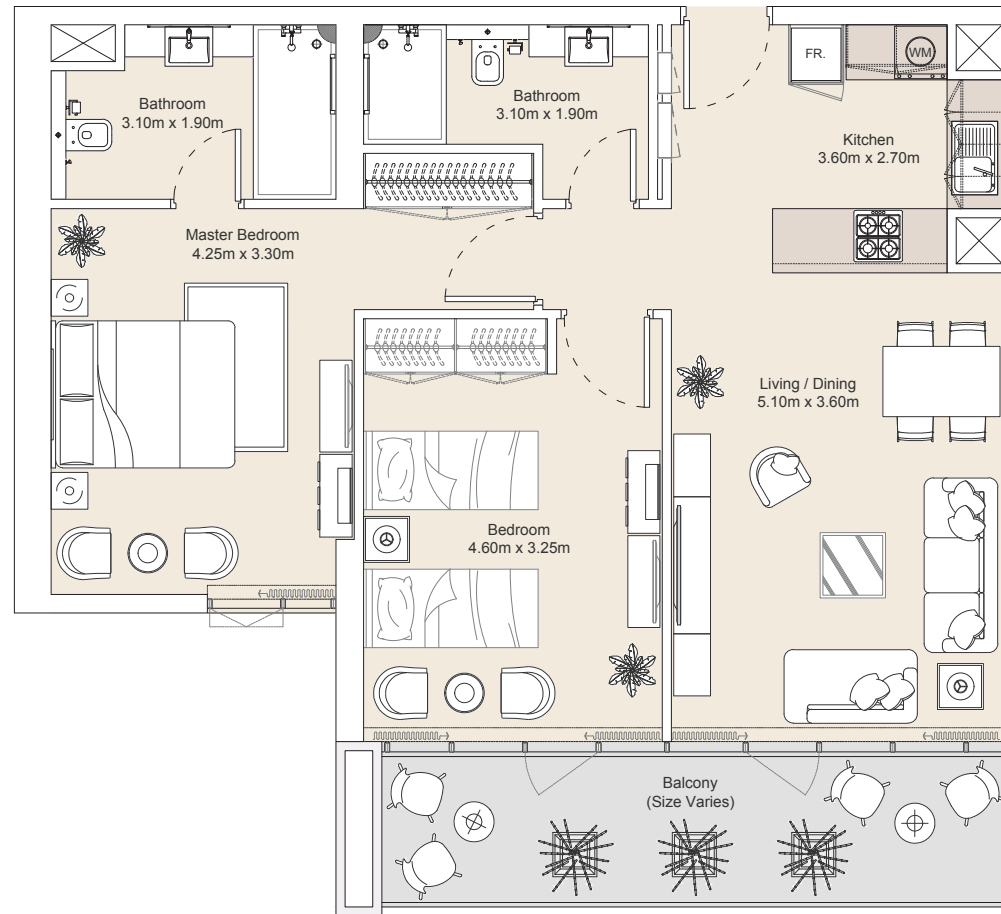
## 2B | Type E

Typical Floor Plan from 1<sup>st</sup> to 12<sup>th</sup> Floors

Internal Area	745.66 sq.ft
Outdoor Area	221.82 sq.ft
<b>Total Area</b>	<b>967.48 sq.ft</b>

All drawings and dimensions are approximate. Drawings are not to scale and are subject to change without notice. The developer reserves the right to make revisions. The units are measured at typical floors in the building and columns may vary in size depending on the floor level. The furnishing and accessories shown are for representation only. The availability, length and width of the balcony varies depending on which floor and which orientation the unit is located within the building. There will be slight differences in the internal areas between the same unit types depending on the shaft sizes that go through the units.



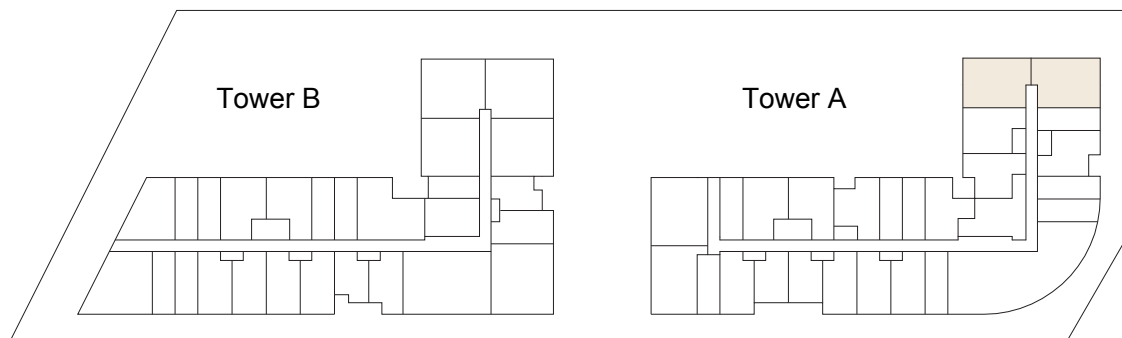
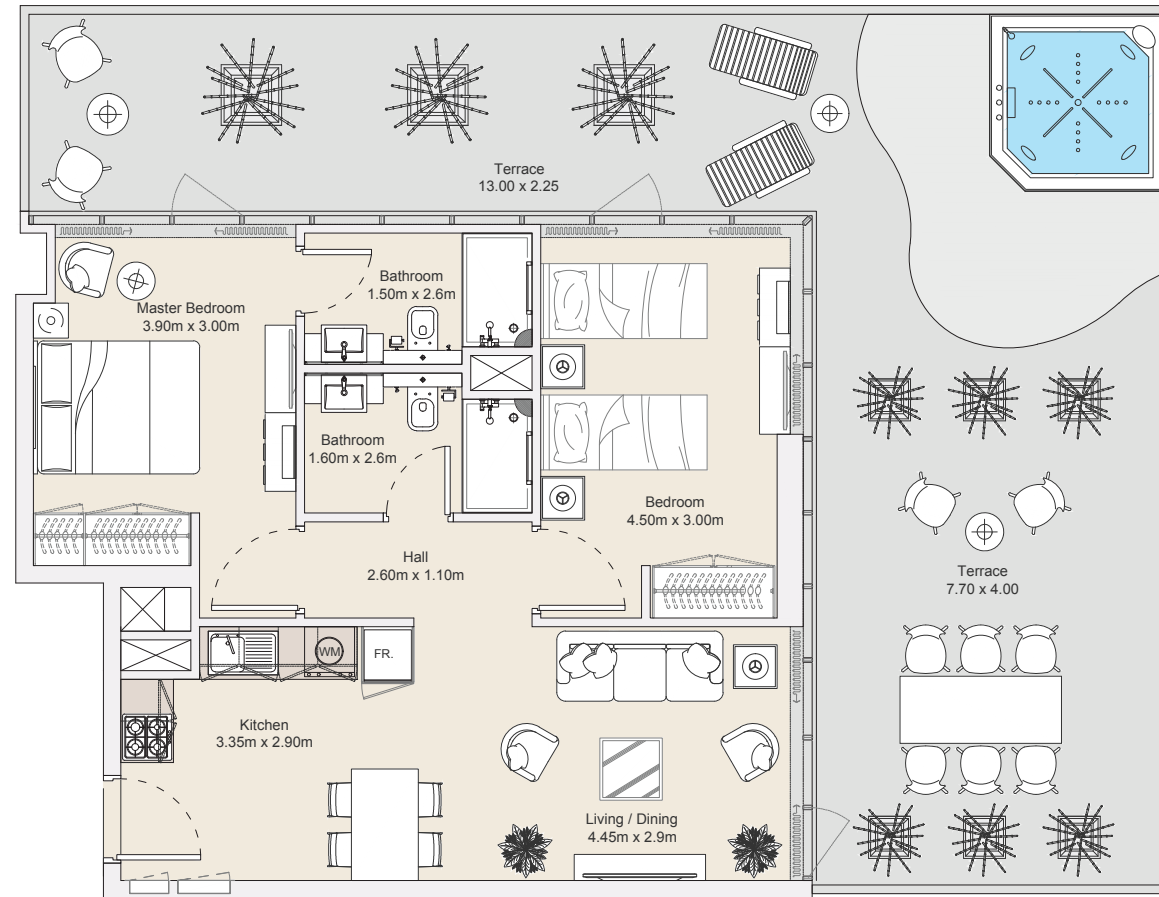


## 2B | Type F

Typical Floor Plan from 1<sup>st</sup> to 12<sup>th</sup> Floors

Internal Area	835.14 sq.ft
Outdoor Area	125.87 sq.ft
<b>Total Area</b>	<b>961.01 sq.ft</b>

All drawings and dimensions are approximate. Drawings are not to scale and are subject to change without notice. The developer reserves the right to make revisions. The units are measured at typical floors in the building and columns may vary in size depending on the floor level. The furnishing and accessories shown are for representation only. The availability, length and width of the balcony varies depending on which floor and which orientation the unit is located within the building. There will be slight differences in the internal areas between the same unit types depending on the shaft sizes that go through the units.

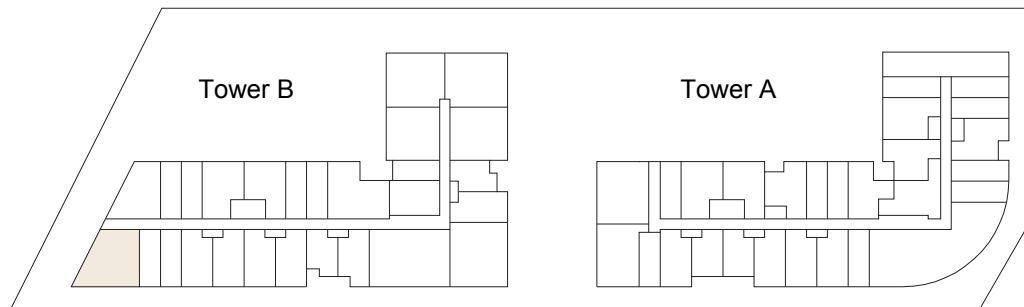
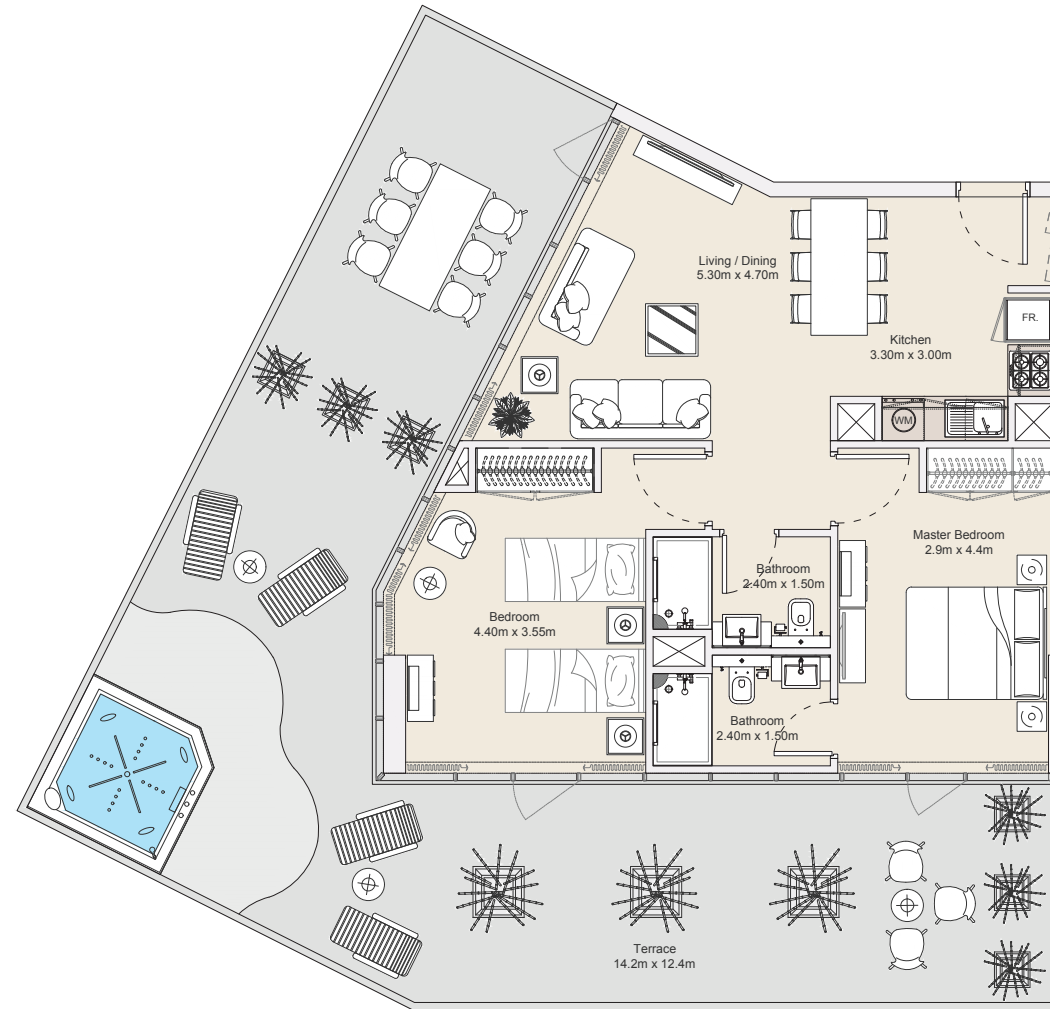


## 2B | Type G

### Ground Floor

Internal Area	680.48 sq.ft
Outdoor Area	671.26 sq.ft
<b>Total Area</b>	<b>1351.74 sq.ft</b>

All drawings and dimensions are approximate. Drawings are not to scale and are subject to change without notice. The developer reserves the right to make revisions. The units are measured at typical floors in the building and columns may vary in size depending on the floor level. The furnishing and accessories shown are for representation only. The availability, length and width of the balcony varies depending on which floor and which orientation the unit is located within the building. There will be slight differences in the internal areas between the same unit types depending on the shaft sizes that go through the units.

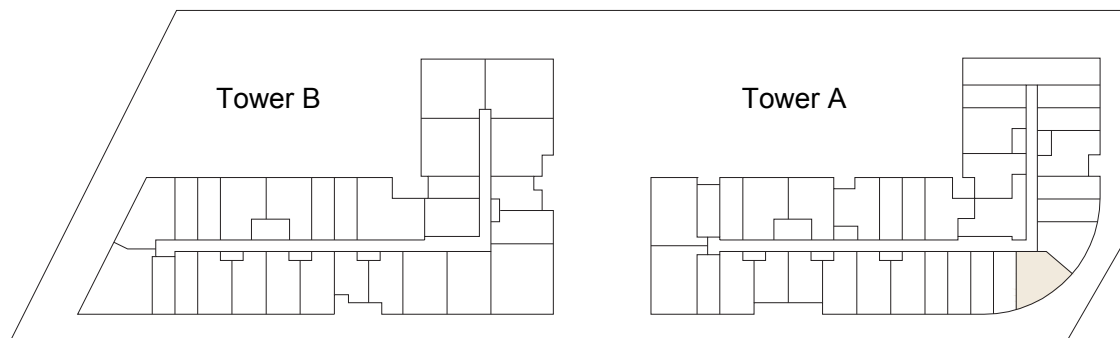
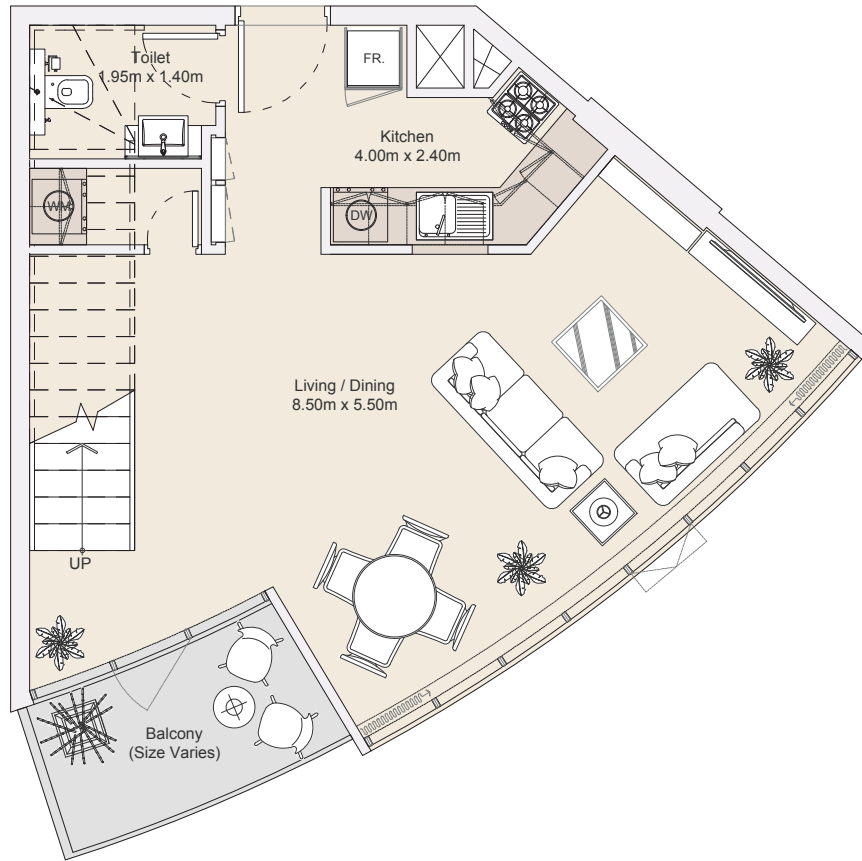


## 2B | Type H

### Ground Floor

Internal Area	709.39 sq.ft
Outdoor Area	757.88 sq.ft
<b>Total Area</b>	<b>1467.27 sq.ft</b>

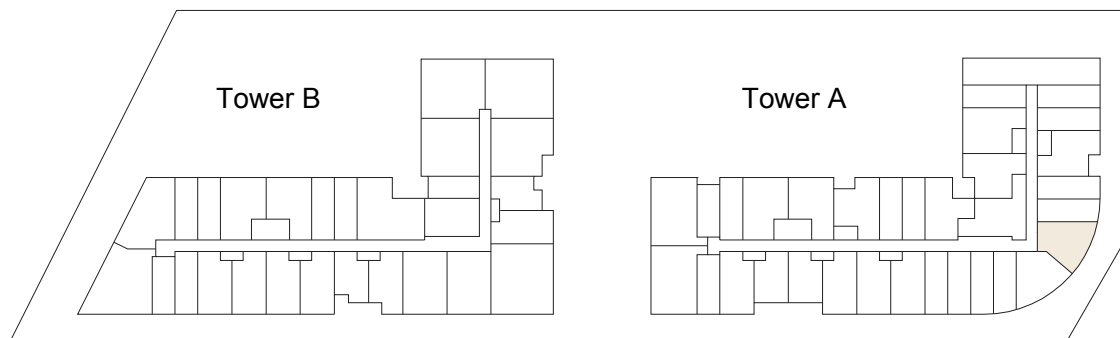
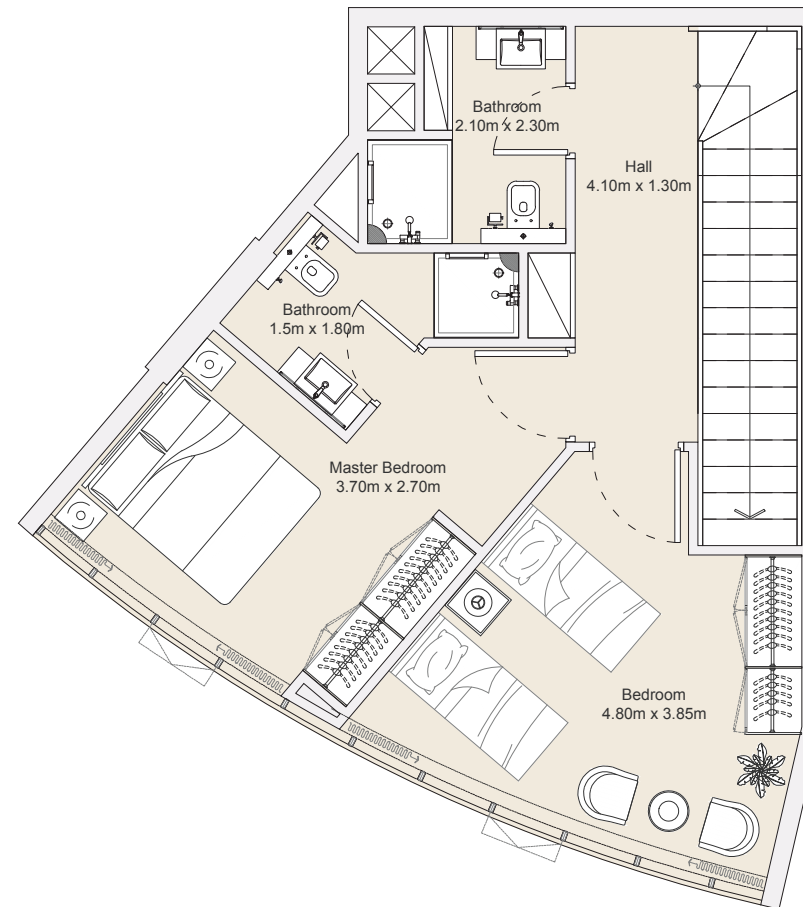
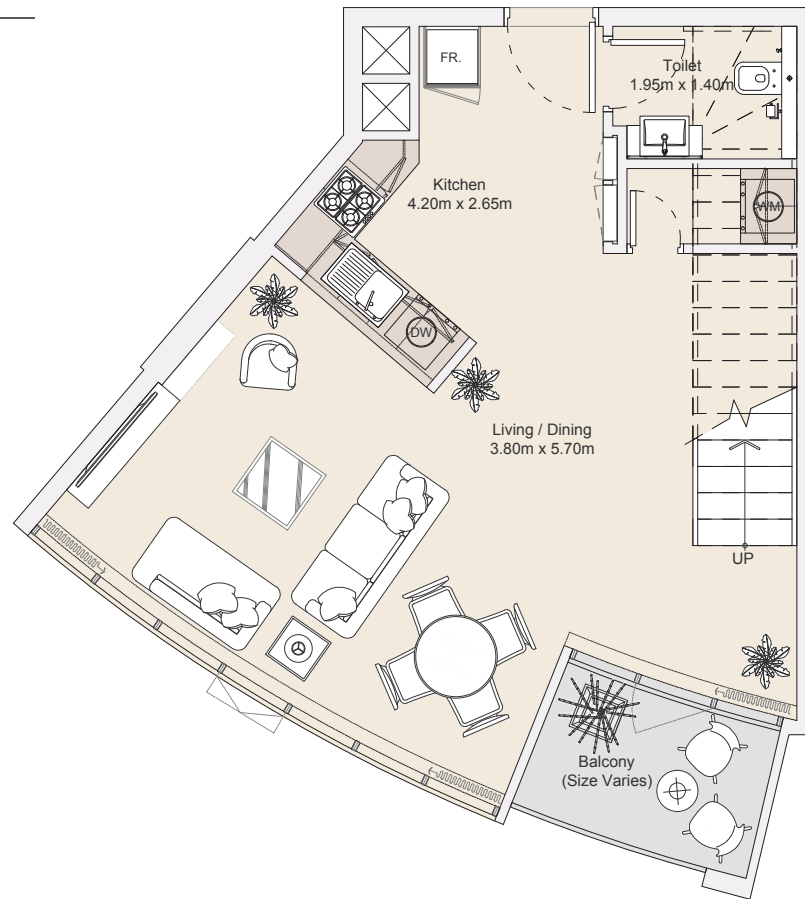
All drawings and dimensions are approximate. Drawings are not to scale and are subject to change without notice. The developer reserves the right to make revisions. The units are measured at typical floors in the building and columns may vary in size depending on the floor level. The furnishing and accessories shown are for representation only. The availability, length and width of the balcony varies depending on which floor and which orientation the unit is located within the building. There will be slight differences in the internal areas between the same unit types depending on the shaft sizes that go through the units.



## 2B Duplex | Type A

1<sup>st</sup>, 3<sup>rd</sup>, 5<sup>th</sup>, 7<sup>th</sup>, 9<sup>th</sup>, 11<sup>th</sup> Duplex Floors

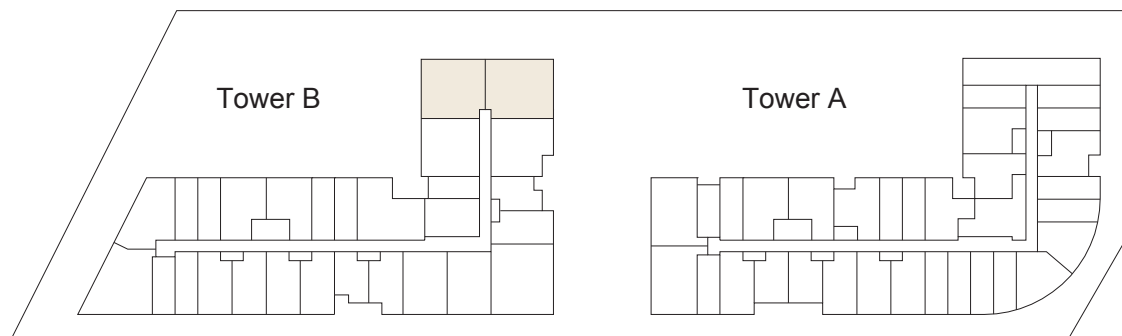
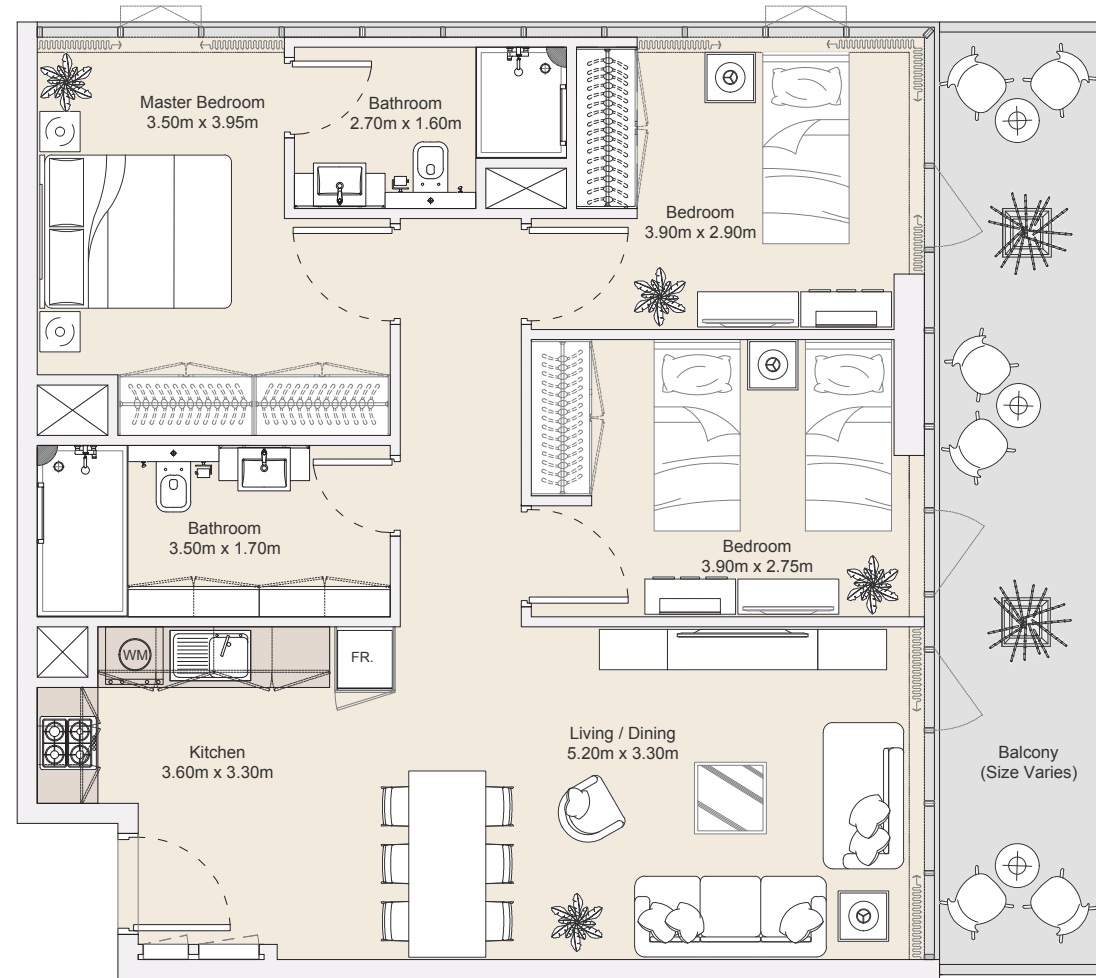
Internal Area	1,072.29 sq.ft
Outdoor Area	59.98 sq.ft
<b>Total Area</b>	<b>1132.27 sq.ft</b>



## 2B Duplex | Type B

1<sup>st</sup>, 3<sup>rd</sup>, 5<sup>th</sup>, 7<sup>th</sup>, 9<sup>th</sup>, 11<sup>th</sup> Duplex Floors

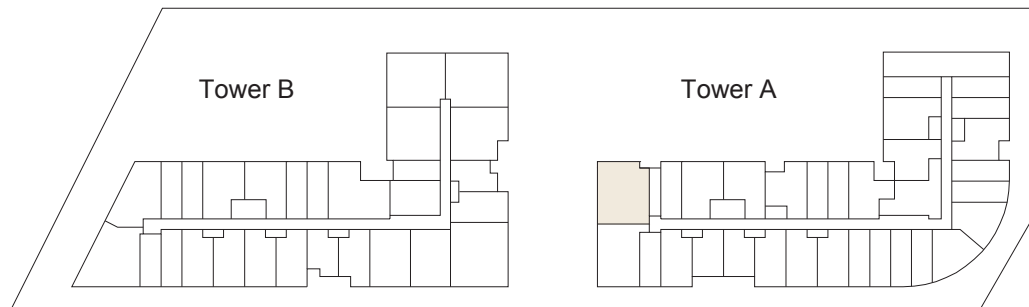
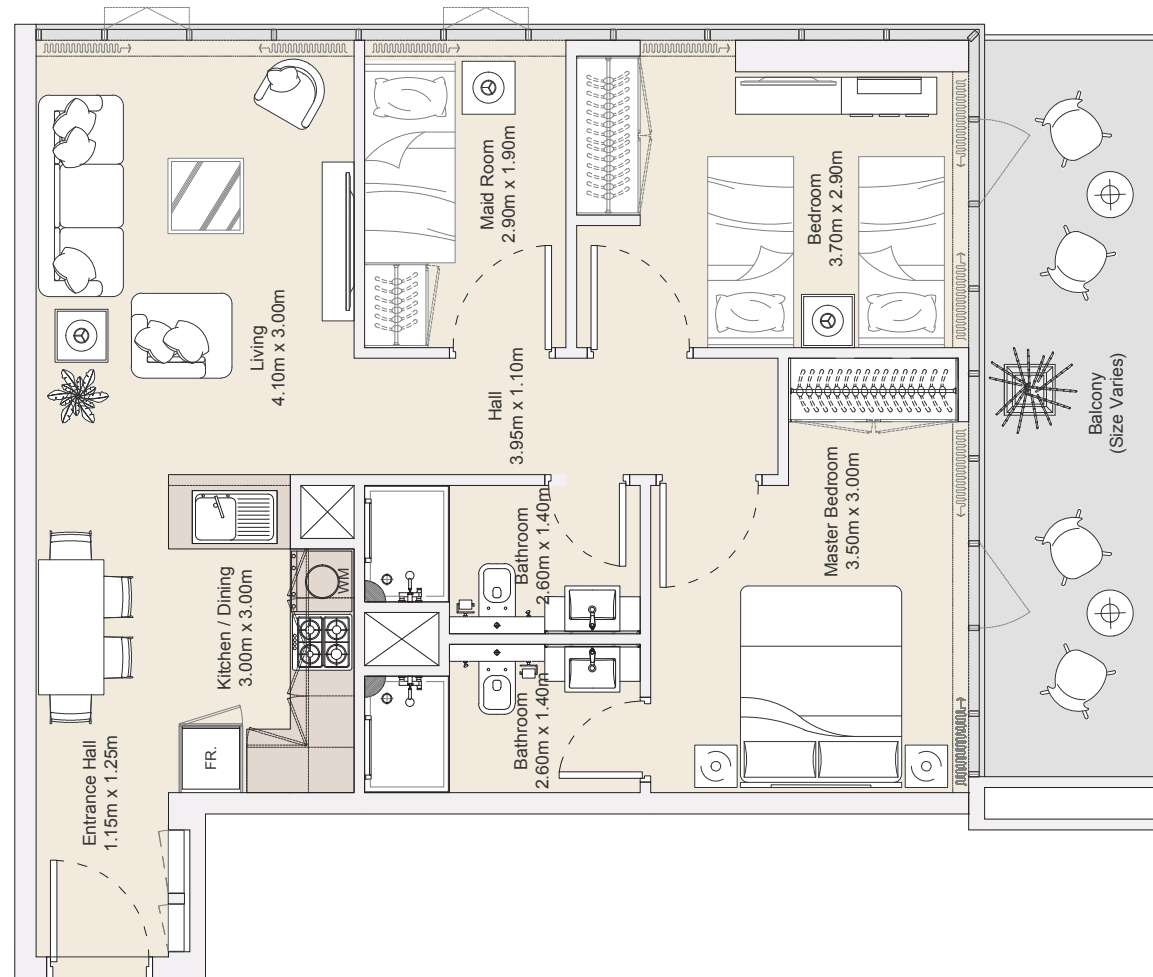
Internal Area	1,063.69 sq.ft
Outdoor Area	50.02 sq.ft
<b>Total Area</b>	<b>1113.71 sq.ft</b>



## 3B | Type A

Typical Floor Plan from Ground to 12<sup>th</sup> Floors

Internal Area	861.32 sq.ft
Outdoor Area	170.18 sq.ft
<b>Total Area</b>	<b>1031.50 sq.ft</b>

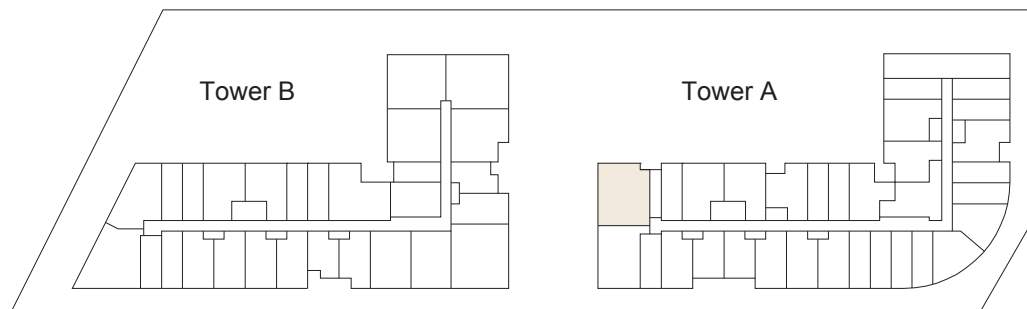
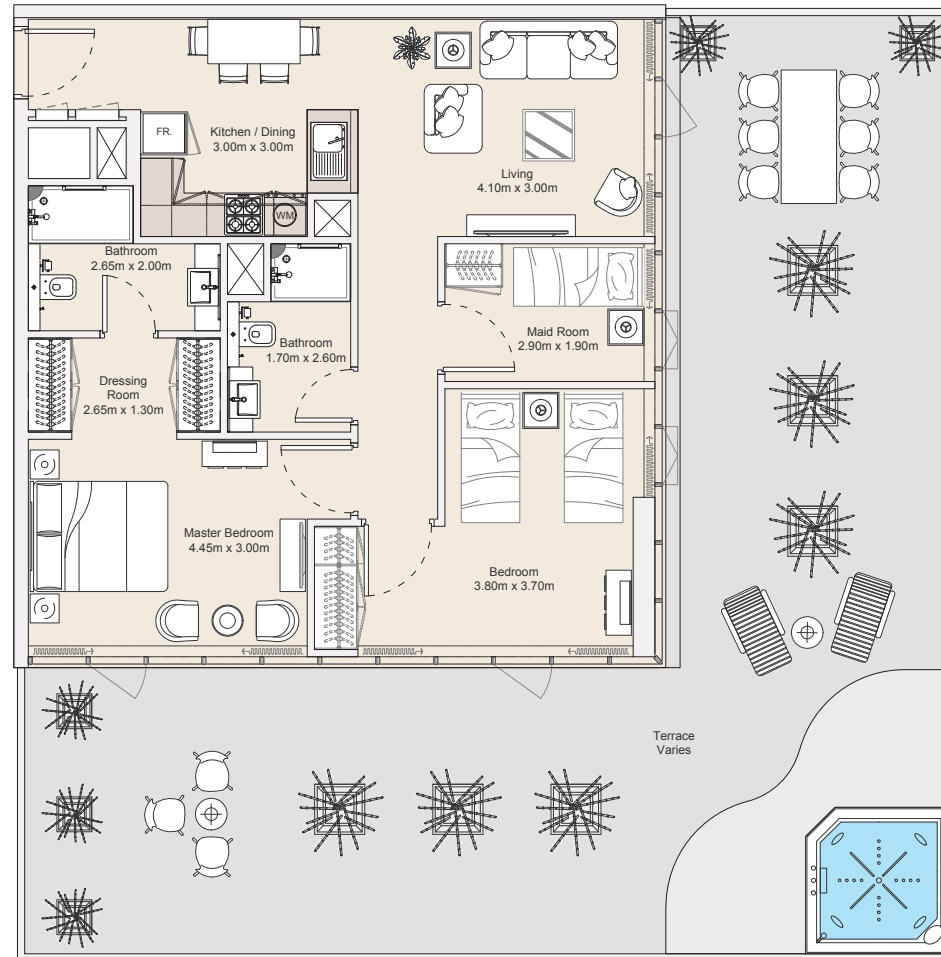


## 3B | Type C

### Ground Floor Plan

Internal Area	823.40 sq.ft
Outdoor Area	962.13 sq.ft
<b>Total Area</b>	<b>1785.53 sq.ft</b>

All drawings and dimensions are approximate. Drawings are not to scale and are subject to change without notice. The developer reserves the right to make revisions. The units are measured at typical floors in the building and columns may vary in size depending on the floor level. The furnishing and accessories shown are for representation only. The availability, length and width of the balcony varies depending on which floor and which orientation the unit is located within the building. There will be slight differences in the internal areas between the same unit types depending on the shaft sizes that go through the units.



## 3B | Type C

### Ground Floor Plan

Internal Area	823.40 sq.ft
Outdoor Area	962.13 sq.ft
<b>Total Area</b>	<b>1785.53 sq.ft</b>

All drawings and dimensions are approximate. Drawings are not to scale and are subject to change without notice. The developer reserves the right to make revisions. The units are measured at typical floors in the building and columns may vary in size depending on the floor level. The furnishing and accessories shown are for representation only. The availability, length and width of the balcony varies depending on which floor and which orientation the unit is located within the building. There will be slight differences in the internal areas between the same unit types depending on the shaft sizes that go through the units.