



Alrite Steel & Services NZ Ltd



STEEL PILES

PO Box 98-967, Manukau,

Auckland 2241, New Zealand

PH: +64 9 270 2008 / Fax: +64 9 270 2009

Email: info@alrite.co.nz / Website: www.alrite.co.nz

Welcome to Alrite Steel & Services NZ Limited

Alrite Steel & Services NZ Ltd is an importer, stockiest and distributor of all types of Building and Civil Construction Steel with warehousing based in Auckland, New Zealand

With over 30 years' industry knowledge and experience, Alrite Team has earned an enviable reputation for outstanding customer service and as a supplier of high quality compliant steel products.

We specialize in the supply of materials on "Indent" direct to our clients and end users.

We carry a modest amount of steel stock locally and are able to supply the whole range of commonly used Hollows (SHS, RHS, CHS) Structural Steel UBs, UCs, Channels, Angles, Flat bars, Sheet / Circular and Bearing H Piles, HR & CR Coils, sheets and plates, etc. and these can be available ex our offshore stock within 2-6 weeks.

Representing various Steel manufacturers and suppliers from all over the world our team specializes in supplying all types of Steel and associated products to top mark quality.

We specialize in supply of all types of Steel Piles, Casings and associated accessories.

Products are available in various specifications, standards and grades in 6, 9 & 12m lengths or to required lengths from mill rolling.

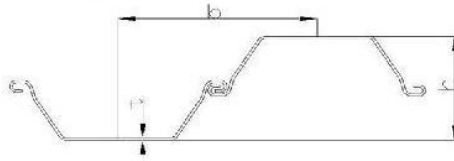
- **Sheet Piles**
- **Circular / Hollow Piles and Casing**
- **Bearing / H Beam Piles**
- **Accessories**



ALRITE SHEET PILES

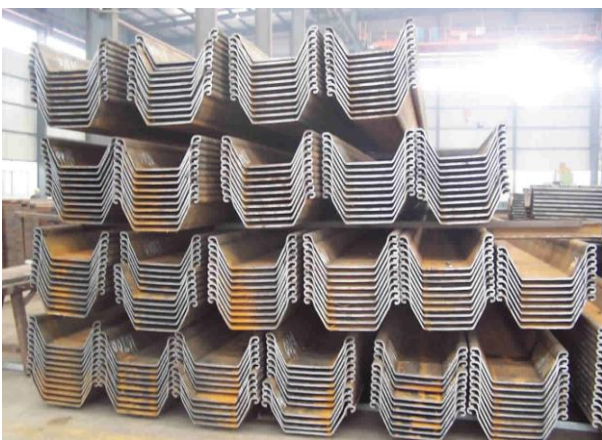
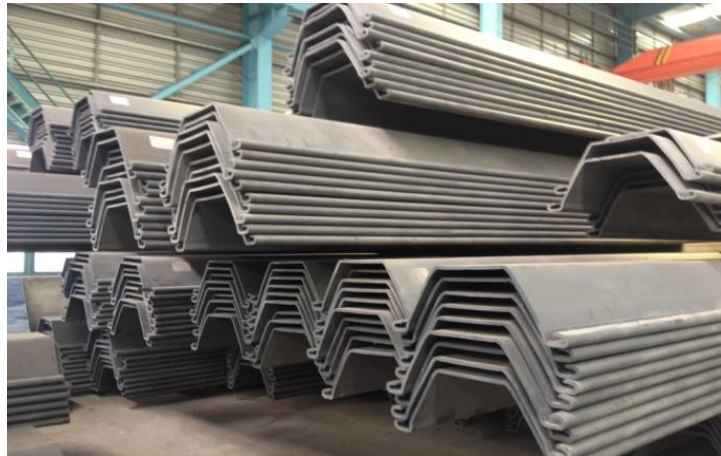
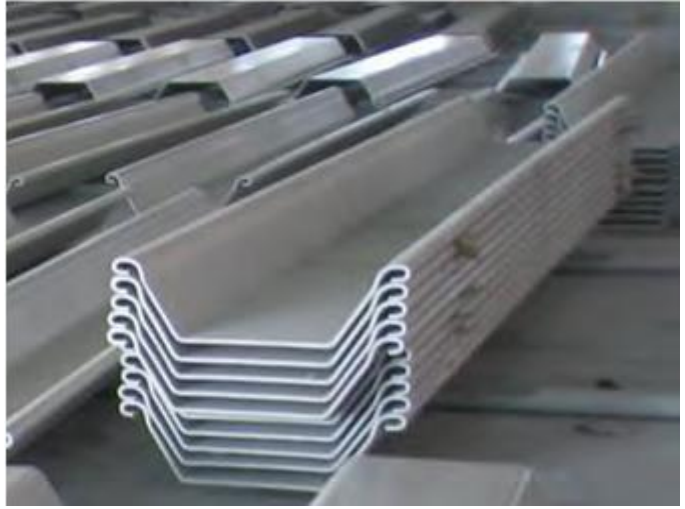
- Hot & Cold Rolled Sheet Piles
- “U” & “Z” Types Sheet Piles
- Hat Type Sheet Piles
- Asia Type / Profile Sheet Piles
- Hoesch Sheet Piles
- European Type Sheet Piles
- Wide Type Sheet Piles
- Web Type Sheet Piles
- Box Type Sheet Piles
- Straight Web Section Sheet Piles
- Combined Wall Section Sheet Piles – Pipe plus Hat or U
- Fibre Reinforced Polymer (FRP) Sheet Piles – Box & Z profile
- Marine Grade Sheet Piles
- Vinyl Sheet Piles (PVC, UPVC, Composite, Plastic Sheet Piles)
- Corner Piles / Joiners / Clutches

ALRITE (ALR) U TYPE SHEET PILE

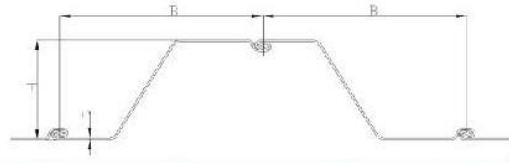


ITEM	WIDTH [mm]	HEIGHT [mm]	PLATE THICK. [mm]	WEIGHT/ PILE [kg/m]	WEIGHT/ AREA [kg/m ²]	MOMENT OF INERTIA [cm ⁴ /m]	ELASTIC MODULUS OF SECTION [cm ³ /m]
ALRU 4	600	320	3.5	24.6	41.1	7298	456
ALRU 5	600	320	4	28.2	46.9	8307	519
ALRU 7	750	320	5	42.8	57	11089	693
ALRU8-600	600	320	6	44	73.3	12791	799
ALRU 8-750	750	320	6	51.1	68.1	13191	824
ALRU8-850	850	320	6	55.8	65.6	13379	836
ALRU9-600	600	320	7	51	85	14783	924
ALRU9-750	750	320	7	59.3	79	15256	953
ALRU10	450	360	8	52.6	116.9	18267	1015
ALRU10-700	700	310	9	71.6	102.3	16270	1049
ALRU11-575	575	360	8	60.4	105.1	19685	1094
ALRU11-600	600	360	8	62	103.4	19897	1105
ALRU11-450	450	360	9	58.8	130.7	20375	1132
ALRU12-575	575	360	9	67.6	117.6	21979	1221
ALRU12-600	600	360	9	69.4	115.7	22219	1234
ALRU12-450	450	360	10	64.7	143.8	22444	1247
ALRU 13	575	360	10	74.8	130	24223	1346
ALRU 14	600	360	10	76.7	127.9	24491	1361
ALRU15	650	480	7	62.3	95.8	35144	1464
ALRU16-600	600	480	8	67.8	113	39481	1645
ALRU 16-650	650	480	8	71.2	109.5	39872	1661
ALRU 17	750	480	8	77.2	102.9	40497	1687
ALRU18-600	600	480	9	76	126.7	44674	1854
ALRU 18-650	650	480	9	79.6	122.5	44521	1855
ALRU19-500	500	350	12	94.3	188.7	32499	1857
ALRU19-600	600	350	12	103.8	172.9	32797	1874
ALRU20	600	350	13	112.3	187.2	35224	2013
ALRU 21	650	540	8	78.4	120.7	56002	2074
ALRU23-600	600	540	9	84.3	140.5	62516	2315
ALRU 23-650	650	540	9	87.8	135.1	62588	2318
ALRU26-600	600	540	10	93.2	155.3	68988	2555
ALRU 26-650	650	540	10	96.2	148	69093	2559
ALRU30-600	600	560	11	110.4	184	83966	2999
ALRU 30-700	700	560	11	119	170.1	83813	2993
ALRU32-600	600	560	12	120.3	200.5	90502	3231
ALRU 32-700	700	560	12	129.8	185.4	90880	3246
ALRU 35	700	562	13	140.2	200.3	98652	3511
ALRU 37	700	560	14	156.2	223.2	102145	3661
ALRU 40	700	560	15	166.9	238.5	109655	3916
ALRU 43	700	560	16	177.6	253.7	117194	4170

ALRITE U TYPE SHEET PILES

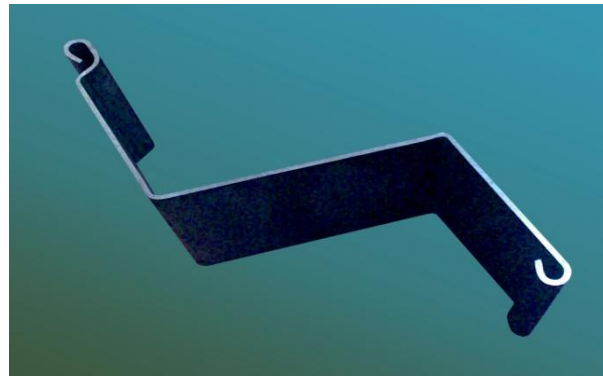


ALRITE (ALR) Z TYPE SHEET PILE



ITEM	WIDTH [mm]	HEIGHT [mm]	PLATE THICK. [mm]	WEIGHT/ PILE [kg/m]	WEIGHT/ AREA [kg/m ²]	MOMENT OF INERTIA [cm ⁴ /m]	ELASTIC MODULUS OF SECTION [cm ³ /m]
ALRZ5-850	850	253	5	41.1	48.4	6416	507
ALRZ6-850	850	254	6	49.2	57.9	7671	604
ALRZ10-700	700	350	5	42	60	17208	983
ALRZ12-700	700	351	6	50.3	71.8	20569	1172
ALRZ12-650	650	319	7	57.8	88.9	19603	1229
ALRZ14-650	650	320	8	65.8	101.2	22312	1395
ALRZ14-700	700	419	7	61.5	87.8	30824	1471
ALRZ16-NL	635	379	7	60.2	94.9	30272	1597
ALRZ16-635	635	379	7	61.5	96.9	30502	1610
ALRZ16-700	700	420	8	70	100	35074	1670
ALRZ18-NL	635	380	8	68.5	108	34405	1811
ALRZ18-635	635	380	8	70.1	110.3	34717	1827
ALRZ19-685	685	401	9	77.4	113	37335	1862
ALRZ21-685	685	402	10	85.7	125.2	41304	2055
ALRZ22-700	700	419	9	87.1	124.5	47058	2246
ALRZ23-635	635	417	9	81.1	127.6	47225	2265
ALRZ25-700	700	420	10	96.5	137.9	52095	2491
ALRZ25-635	635	418	10	89.7	141.3	522258	2500
ALRZ26-635	635	418.5	10.5	94	148.1	54758	2617
ALRZ27-700	700	448	10	101.9	145.6	61144	2730
ALRZ28-635	635	419	11	104.2	164.1	58786	2806
ALRZ30-700	700	449	11	111.8	159.7	67025	2986
ALRZ30-635	635	420	12	113.3	178.4	63889	3042
ALRZ32-700	700	450	12	121.6	173.7	72863	3238
ALRZ32-635	635	421	13	122.3	192.7	68954	3276
ALRZ35-675	675	490	12	118.9	176.1	84657	3455
ALRZ36-700	700	500	12	125.2	178.9	91788	3672
ALRZ37-675	675	491	13	128.4	190.2	91327	3720
ALRZ39-675	675	491.5	13.5	133.1	197.2	94699	3853
ALRZ40-700	700	501	13	135.2	193.2	99086	3956
ALRZ43-700	700	499	14	151	215.7	107240	4298
ALRZ44-700	700	548	13	138.4	197.8	120551	4400
ALRZ46-700	700	500	15	161.3	230.4	114516	4581
ALRZ48-700	700	549	14	148.7	212.4	129356	4712
ALRZ51-700	700	550	15	165.8	236.9	141518	5146
ALRZ54-700	700	551	16	176.3	251.9	150443	5461

ALRITE Z TYPE SHEET PILES



ALRITE PROJECTS



ALRITE PROJECTS



ALRITE CIRCULAR / HOLLOW PILES & CASINGS

- SSAW – Spiral Submerged Arc Welding pipe pile
- LSAW – Longitudinally Submerged Arc Welding pipe pile
- ERW – Electric Resistance Welded pipe piles
- Seamless Pipes
- Spiral Piles
- Beveled / Chamfered ends
- Protective Coatings

ALRITE CIRCULAR / HOLLOW PILES & CASINGS



ALRITE BEARING / H BEAM PILES

- Bearing piles – sizes from 200 x 200 up to 400 x 400
- Metric & Imperial Size H Beams
- Universal Columns
- Universal Beams

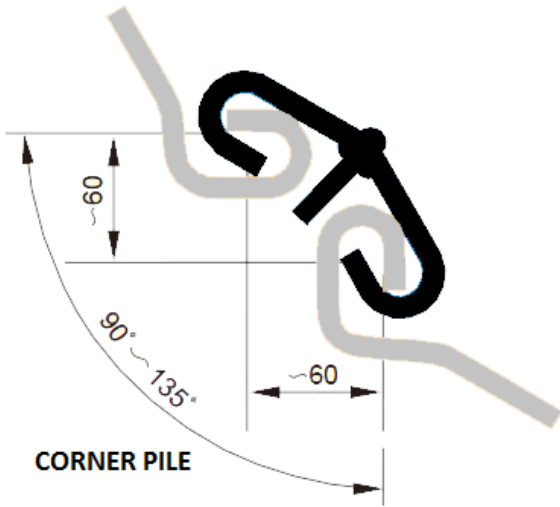
ALRITE BEARING / H BEAM PILES



ACCESSORIES

- Joiners / Clutches / Corner Piles
- Waling – Steel Channels, Angles & Beams
- Reinforcing Steel
- Piling Hammers – excavator mounted & crane hang on type
- Piling Shoes
- Lifting lugs
- Steel Plates
- Cold Formed special sections to suit
- Steel Tie Rods & Fittings- Turnbuckle/Coupler and hinge (ring) joint, 2 hinge joints, cardan joint and 2 cardan joints
- Protective Coatings – painting, zinc rich epoxy paint, hot dip galvanizing, denso wrapping, bitumen, concrete lined, etc.
- Third Party / Independent Inspection and reporting from SGS

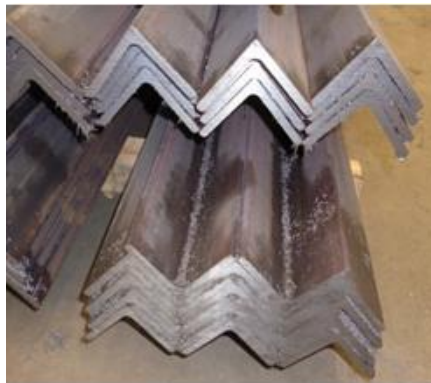
ACCESSORIES



TIE RODS



CHANNELS



ANGLES



BEAMS



EXCAVATOR



PILING CAGE

