

# Autoclave

## Super Microm Series

Sturdy's advanced tabletop autoclaves for solid, wrapped, tubal and liquid (optional) sterilization. These autoclaves use Microprocessor design, providing smart logic control for precision temperature monitoring and a full range of settings for diagnostics, drying and pre-programmed sterilization presets. The most main feature is a powerful vacuum pump for thorough inside-out sterilization of tubal instruments.



# Autoclave

## Super Deluxe Series

### Features

- Pre & post vacuum
- B.D. & Pump test program
- Prion program
- Auto water fill
- Pressure overload protection
- Overheat protection
- Pressure auto door lock
- Emergency/reset buttons
- Pressure safety valve
- Chamber volume: 16L / 24 L / 40L / 50L



# Autoclave

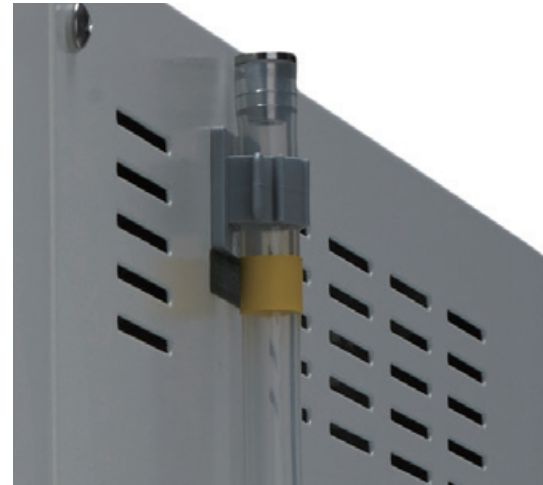
## Super Deluxe Series

SA-230/260MA External View

A Pressure Gauge



B The yellow mark is full water level.



C Easy Door Knob



If SA-230MA/ 260MA with recorder (The model NO. is SA-230MA-R /260MA-R/SA-300MA-R), they comply with Class S.

Reliable Sterilization Partner

**STURDY**  
APEX GROUP

# Autoclave

## Super Deluxe Series

SA-300MA External View

A Pressure Gauge



B Door Handle



# Autoclave

## Super Deluxe Series

SA-300VMA External View

A Door Handle



B Pressure Gauge



C Caster With Total Lock



# Super Deluxe Series

SA-230MA / 260MA / 300MA / 300VMA Control Panel

# Autoclave

**Temperature Panel**  
Display the temperature inside the chamber.  
Display "REC" with recorder type (optional).

**Process Status Indicator**  
Individual LED light to indicate the current status of the sterilization program.

- Vacuum
- Add Water
- Heating
- Sterilization
- Exhaust – pressure release and water drain
- Dry
- Complete

**Door Open Indicator Light**  
Indicates the chamber door is open or not closed fully.

**Pump Test Button**  
Perform pumping step for verifying the pump function.

**B.D. Test Button**  
Perform B.D. Test program.

**Re-Dry Button**  
Select Re-Dry Program for 10 min. The light will illuminate when selected.

**Vacuum Release Button**  
To release the pressure inside the chamber prior opening the door.

**Emergency Stop Button**  
Stop program and release pressure/vacuum. (Press for more than 3 seconds.)

**Visual Alarm Indicator Light**  
Indicates over-temperature or over-pressure in the chamber

**Low Water Indicator Light**  
Indicates the water level is below the minimum level or the program has been unable to add sufficient water after 5 min.. And reservoir

**Sterilization Temperature Button**  
Select the required sterilization temperature of 121°C or 134°C. The selected temperature light will illuminate.

**Sterilization Item Button**  
Select between unwrapped or wrapped items. The selected item light will illuminate.

**Dry Timer Button**  
Select a 0/15/30/35/40 min. drying time. The light will illuminate when selected.

**PRION Button**  
Start the PRION Program.

**Start Button**  
Start the selected Program.

**Reset / Stop Button**  
Reset program while running. (Press for more than 3 seconds.)

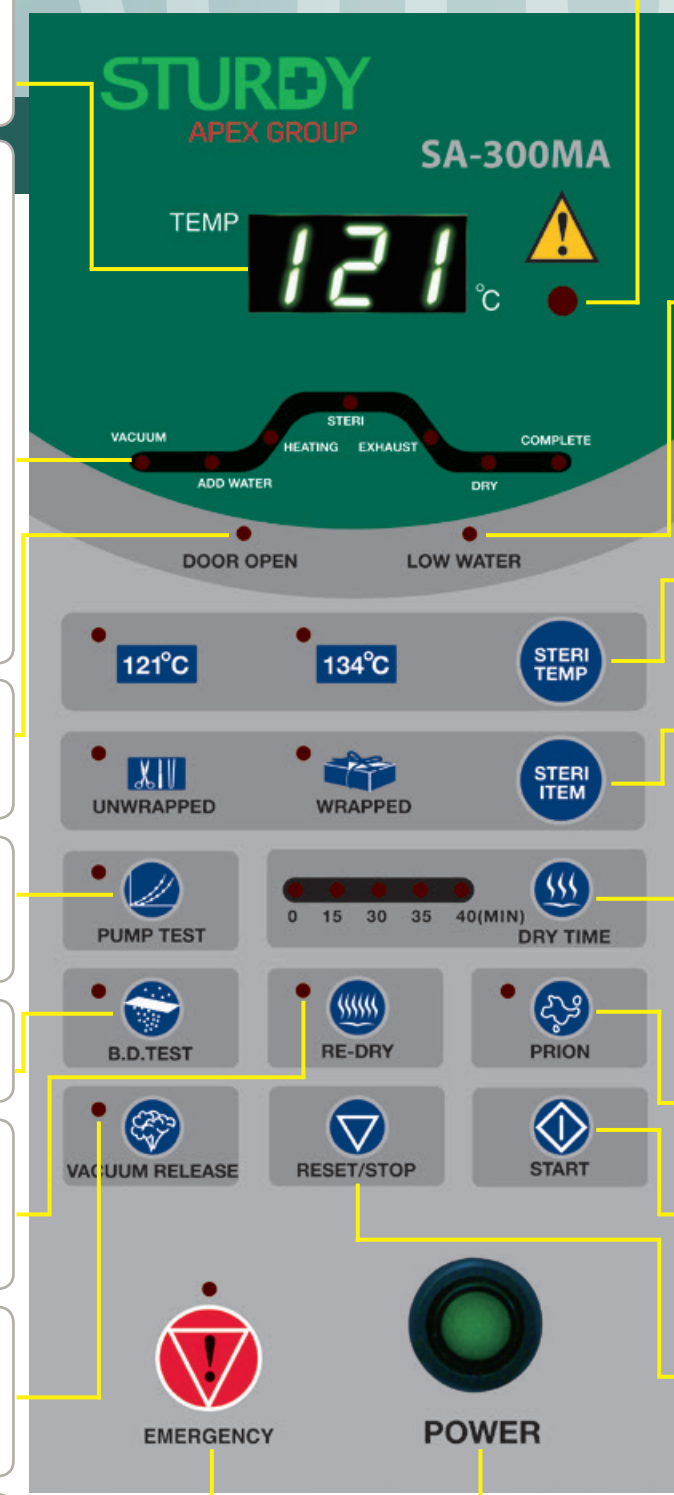
**Power Switch**  
ON/OFF switch and power indicator (Illuminates when ON)

You can choose Flash or Liquid function.

**Optional by order request**

- **Flash Button:** Select Flash Sterilization Program. The light will illuminate when selected.(For SA-230/260MA)
- **Liquid Button:** Select Liquid Sterilization Program. The light will illuminate when selected.(For SA-230/260/300MA /300VMA)

**SA - 300VMA:** Liquid sterilization is standard function.



Reliable Sterilization Partner



# Autoclave

## Super Deluxe Series

### Certifications

Sturdy is manufactured in compliance with the following directives and standards:

- 93/42/EEC, Class IIB (European Directive for Medical Devices)
- 2014/68/EU (Pressure Equipment Directive)
- EN 285 (Large Steam Sterilizers),
- EN 13060 (Small Steam Sterilizers)
- EN 61010-1/-2-040 (Safety Requirements for Electrical Equipment for Measurement Control And Laboratory Use – Part 1 and Part 2)
- EN 61326-1 (Electrical Equipment for Measurement Control And Laboratory Use – EMC Requirements – Part 1: General Requirements)
- ISO 13485 (Quality Management/Certification)

# Autoclave

## Super Deluxe Series

### Specifications

| SPEC/Model NO.                       | SA-230MA        | SA-260MA        | SA-300MA        | SA-300VMA       |
|--------------------------------------|-----------------|-----------------|-----------------|-----------------|
| Chamber Capacity (L)                 | 16              | 24              | 40              | 50              |
| Chamber Size<br>Diam x Depth (mm)    | 230 x 410       | 260 x 450       | 300 x 570       | 300 x 710       |
| Overall Dimensions<br>W x H x D (mm) | 522 x 410 x 594 | 533 x 442 x 655 | 620 x 489 x 766 | 600 x 980 x 450 |
| Voltage (V)                          | 230             | 230             | 230             | 230             |
| Current(A) / Power(W)                | 9A / 2026W      | 13A / 2770W     | 14A / 3226W     | 14A / 3000W     |
| Heater (W)                           | 1400            | 1800            | 2300            | 2300            |
| Dry Heater (W)                       | 526             | 870             | 826             | 600             |
| Net Weight (Kg)                      | 44              | 54              | 77              | 84              |
| Water Fill*                          | Tank            | Tank            | Tank            | Piped           |
| Type                                 | Tabletop        | Tabletop        | Tabletop        | Vertical        |
| Water Tank<br>Capacity (cc)          | 4200            | 4200            | 8400            | N/A             |
| Water Consumption<br>per cycle (cc)  | 200~450         | 280~350         | 350~700         | 1000~1200       |

\* "Tank" - Internal Water Tank with auto-chamber-fill, "Piped" - uses local water plumbing with auto-fill.



# Autoclave

## Super Deluxe Series

### Specifications

| SPEC/Model NO.                     | SA-230MA          | SA-260MA          | SA-300MA          | SA-300VMA         |
|------------------------------------|-------------------|-------------------|-------------------|-------------------|
| Class S Model (+Recorder)          | SA-230MA-R        | SA-260MA-R        | SA-300MA-R        | SA-300VMA-R       |
| Temperature Options ( °C)          | 121 or 134        | 121 or 134        | 121 or 134        | 121 or 134        |
| Prion                              | S                 | S                 | S                 | S                 |
| Bowie Dick Test                    | S                 | S                 | S                 | S                 |
| Pump Test                          | S                 | S                 | S                 | S                 |
| Sterilization Timer                | N/A               | N/A               | N/A               | N/A               |
| Dry Timer                          | 0,15,30,35,40 min | 0,15,30,35,40 min | 0,15,30,35,40 min | 0,15,30,35,40 min |
| Redry                              | S                 | S                 | S                 | 0                 |
| Data Recorder                      | 0                 | 0                 | 0                 | 0                 |
| Liquid                             | 0                 | 0                 | 0                 | S                 |
| Temperature Indicator              | LED               | LED               | LED               | LED               |
| Pressure Indicator                 | Gauge             | Gauge             | Gauge             | Gauge             |
| Progress Indicator (bar or lights) | S                 | S                 | S                 | S                 |
| Power Indicator                    | S                 | S                 | S                 | S                 |
| Pressure Auto Lock                 | S                 | S                 | S                 | S                 |
| Door Closed Indicator              | S                 | S                 | S                 | S                 |
| Low Water Indicator                | S                 | S                 | S                 | S                 |
| Reset                              | S                 | S                 | S                 | S                 |
| Program Selector                   | S                 | S                 | S                 | S                 |
| Error Indicator                    | S                 | S                 | S                 | S                 |
| Pre-Vacuum                         | S                 | S                 | S                 | S                 |
| Post Dry Vacuum                    | S                 | S                 | S                 | S                 |

Note: "S" - Standard configuration. "0" - Optional configuration.