



St Werburghs Community Centre

Horley Road, St Werburghs, Bristol, BS2 9TJ

0117 955 1351 (tel:0117 955 1351)

Send email (<mailto:office@stwerburghs.org.uk>)

Visit website (<https://www.stwerburghs.org.uk>)



Access Guide

Location

- There is not a bus stop within 150m (164yds) of the venue.
- The nearest National Rail station is Stapleton Road.

Opening Times

- Monday 08:00 - 22:00.
- Tuesday 08:00 - 22:00.
- Wednesday 08:00 - 22:00.
- Thursday 08:00 - 22:00.
- Friday 08:00 - 00:00.
- Saturday 08:00 - 00:00.

- Sunday 08:00 - 23:00.

Parking

Photos



1



2

-
- The venue does not have its own car park.

Public Car Parks

[View](#)

- There is not a car park for public use within 200m (approx).

On Street Blue Badge Parking

[View](#)

- On street marked Blue Badge bays are available.
- The dimensions of the marked Blue Badge bays are 204cm x 1200cm (6ft 8in x 39ft 4in).
- On street Blue Badge parking is located in Merstham Road.

On Street Standard Parking

[View](#)

- Clearly signed and/or standard marked parking bays are not available.

Drop-off Point

[View](#)

- There is not a designated drop off point.

Outside Access (Main Entrance)

Photos



1



2



3



4

Entrance

View

- This information is for the entrance located at the front of the building, on Merstham Road.
- There is ramped/sloped access at this entrance.
- The main door(s) open(s) automatically (towards you).
- The main automatic door(s) is/are push pad or push button activated.
- The push pad or push button is 82cm from floor level.
- The door(s) is/are double width.
- The width of the door opening is 135cm.
- There is a small lip on the threshold of the entrance, with a height of 2cm or below.
- There is a second set of doors.
- The door(s) open(s) automatically (towards you).
- The automatic door(s) is/are push pad or push button activated.
- The push pad or push button is 91cm from floor level.
- The door(s) is/are double width.
- The width of the door opening is 131cm.

Ramp/Slope

View

- The ramp/slope is located to the right as you face the entrance.
- The gradient of the ramp/slope is slight.
- The ramp/slope is permanent.
- There is not a level landing at the top of the ramp/slope.
- There is a/are handrail(s) at the ramp.

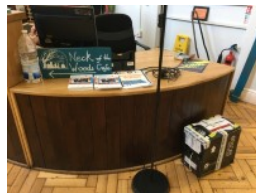
- The handrail(s) is/are on the left going up.

Reception

Photos



1



2

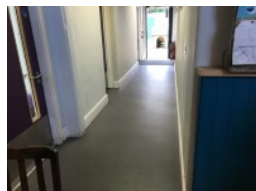
-
- The desk/counter is 8m (8yd 2ft) from the main entrance.
 - There is level access to the desk/counter from the entrance.
 - The desk/counter is medium height (77cm - 109cm).
 - The desk/counter has a low (76cm or lower) section.
 - The lighting levels are bright.
 - There is a hearing assistance system.
 - The hearing system is available only on request.
 - The type of system is a fixed loop.
 - Staff are trained to use the system.

Inside Access

Photos



1



2



3



4

-
- There is level access to the service(s).
 - This venue does play background music.
 - Music is played throughout the venue.
 - Motorised scooters are allowed in public parts of the venue.

- The lighting levels are moderate to good.

Comments

[View](#)

- The majority of doors in the building are automatic.
- Photographs 3 and 4 show the outside area.

Eating and Drinking (Neck of the Woods Café)

Photos



1



2



3



4

-
- The following information is for the café.
 - The café is located to the left beyond the entrance.
 - Full table service is not available.
 - Food or drinks are ordered from the service counter.
 - Food or drinks can be brought to the table.
 - There is not a lowered section at the counter.
 - No tables are permanently fixed.
 - No chairs are permanently fixed.
 - Some chairs have armrests.
 - The nearest table is approximately 14m (15yd 11in) from the main entrance.
 - The standard height for tables is 75cm.
 - There is ample room for a wheelchair user to manoeuvre.
 - Plastic/takeaway cups are available.
 - Plastic/takeaway cutlery is available.
 - Drinking straws are available.
 - Menus are hand held and wall.
 - Menus are not available in Braille.

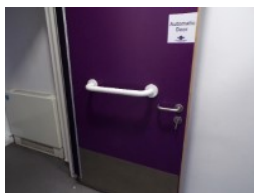
- Menus are not available in large print.
- Picture menus are available.
- Menus are clearly written.
- Menus are presented in contrasting colours.
- The type of food served here is hot and cold meals and snacks.

Accessible Toilet (Left Transfer)

Photos



1



2



3



4



5

-
- Accessible toilet facilities are available.

Location and Access

[View](#)

- There is pictorial signage on or near the toilet door.
- This accessible toilet is approximately 17m (18yd 1ft) from the main entrance.
- This accessible toilet is located to the right of the café.
- There is level access to this accessible toilet.

Features and Dimensions

[View](#)

- This is a shared toilet.
- A key is not required for the accessible toilet.
- The door opens outwards (automatically).
- The door is push pad activated.

- The door is locked by a lever twist.
- The width of the accessible toilet door is 91cm (2ft 12in).
- The door is easy to open.
- The dimensions of the accessible toilet are 161cm x 251cm (5ft 3in x 8ft 3in).
- There is sufficient turning space in the cubicle for a wheelchair user.
- There is a lateral transfer space.
- As you face the toilet pan the transfer space is on the left.
- The lateral transfer space is 94cm (3ft 1in).
- There is a dropdown rail on the transfer side.
- There is a flush on the transfer side.
- The tap type is lever.
- There is a mixer tap.
- There is an emergency alarm.
- The emergency pull cord alarm is fully functional.
- Disposal facilities are available in the cubicle.
- There is a/are sanitary and general domestic waste disposal units.
- There is not a/are not coat hook(s).

Position of Fixtures

View

- Wall mounted grab rails are available for the toilet.
- As you face the toilet the wall-mounted grab rails are on both sides.
- There is not a shelf within the accessible toilet.
- There is a mirror.
- Mirrors are placed at a lower level or at an angle for ease of use.
- The height of the toilet seat above floor level is 46cm (1ft 6in).
- There is a hand dryer.
- The hand dryer can be reached from seated on the toilet.
- The hand dryer is not placed higher than 100cm (3ft 3in).
- There is not a towel dispenser.
- There is not a toilet roll holder.

- There is a wash basin.
- The wash basin can be reached from seated on the toilet.
- The wash basin is not placed higher than 74cm (2ft 5in).

Colour Contrast and Lighting

[View](#)

- The contrast between the external door and wall is good.
- The contrast between the internal door and wall is good.
- The contrast between the wall-mounted grab rail(s) and wall is good.
- The contrast between the dropdown rail(s) and wall is good.
- The contrast between the walls and floor is good.
- The lighting levels are good.

Standard Toilet(s)

Photos



1



2



3



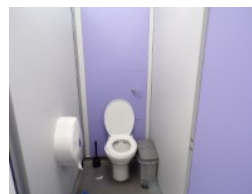
4



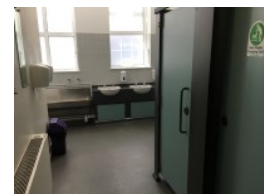
5



6



7



8



9



10



11

Availability and Location of Standard Toilets

[View](#)

- Standard toilet facilities are available.

Access to Standard Female Toilet(s)

[View](#)

- The female toilet facilities that were surveyed are located at the rear of the venue.
- The female toilet(s) is/are approximately 19m (20yd 2ft) from the main entrance.
- Inside the venue, there is level access to the female toilet(s).

Access to Standard Male Toilet(s)

[View](#)

- The male toilet facilities that were surveyed are located at the rear of the venue.
- The male toilet(s) is/are approximately 17m (18yd 1ft) from the main entrance.
- Inside the venue, there is level access to the male toilet(s).
- Lighting levels in the male toilets are good.

Baby Change Facilities

[View](#)

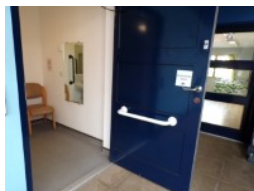
- Baby change facilities are located within the venue.
- Baby change facilities are located in male standard toilets.
- The height of the baby change table once extended is 85cm (2ft 9in).
- Inside the venue, there is level access to the baby change facility.

Changing Places (Right Transfer)

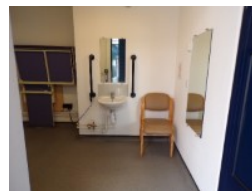
Photos



1



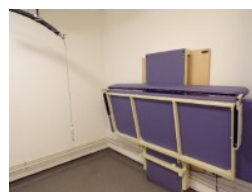
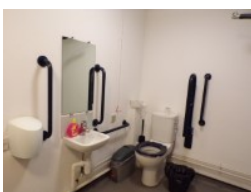
2



3



4



Location and Access

[View](#)

- The facility is located within the annex to the rear of the venue.
- The facility is approximately 18m (19yd 2ft) from the main entrance.
- The facility is in addition to standard and accessible toilets.
- The facility is located close to other managed facilities (e.g. reception or service counter).
- There is level access to the facility.
- The facility surveyed is for the sole use of disabled people.
- The colour contrast between the external door and wall is good.
- The colour contrast between the internal door and wall is good.
- You do not need a key for the facility.
- There is a sign at the entrance to the Changing Places facility indicating the location of the nearest toilets and baby changing facilities.
- The door opens outwards (automatically).
- The door is easy to open.
- The door is locked by a locking handle.
- The door has a horizontal grab rail.
- The width of the door is 90cm (2ft 11in).
- The dimensions of the facility are 270cm x 335cm.
- The ceiling height is at a minimum of 2.4m.
- There is a clear 200cm x 180cm manoeuvring space in the facility.
- The facility has a non-slip floor.
- The colour contrast between the walls and floor is good.

Toilet Details

[View](#)

- The facility toilet is corner.
- The transfer space on the right as you face the toilet is 204cm (6ft 8in).
- Dropdown rails are provided.

- As you face the toilet the dropdown rail(s) is/are on the right.
- The colour contrast between the dropdown rail(s) and wall is good.
- As you face the toilet the vertical grab rail is on the right.
- The colour contrast between the wall-mounted grab rails to the left of the toilet and wall is good.
- The colour contrast between the wall-mounted grab rails to the right of the toilet and wall is good.
- The height of the toilet seat above floor level is 50cm (1ft 8in).
- There is a spatula flush.
- There is not a toilet roll holder.
- The toilet has a cistern.
- The toilet seat colour contrast is good.
- There is an emergency alarm for the toilet.
- The emergency pull cord alarm is within reach and fully functional.

Changing Bench and Hoist Details

View

- The facility changing bench is wall mounted.
- The facility changing bench height is adjustable.
- The length of the facility changing bench is 180cm (5ft 11in).
- The facility hoist is powered overhead.
- The overhead hoist covers all areas in the cubicle.

Shower Details

View

- There is not a shower unit with a detachable shower head.

Other Facilities

View

- A privacy screen is not available.
- The type of wash basin is fixed.
- The height of the wash basin is 74cm.
- The wash basin tap type is lever.
- There is a mixer tap.

- Wall mounted grab rails are available at the wash basin.
- As you face the wash basin, the wall mounted grab rails are on both sides.
- The colour contrast between the wash basin grab rail(s) and wall is good.
- There is not a soap dispenser.
- Wide tear off paper roll is not available.
- There is a hand dryer.
- The hand dryer is not at the recommended height of 80cm-100cm.
- The height of the hand dryer is 74cm.
- There is not a towel dispenser.
- There is a mirror.
- The mirror is not placed at a lower level or at an angle for ease of use.
- There is a/are sanitary and pedal waste paper bin disposal units.
- There is an emergency alarm for the facility.
- The emergency pull cord alarm is within reach and fully functional.
- There is not a coat hook.
- There is not a red flashing fire alarm beacon within the room.
- The lighting levels are moderate to good.

Additional Info

- Documents are not available in Braille.
- Documents can be requested in large print.
- A bowl of water can be provided for an assistance dog.
- A member of staff trained in BSL skills is not normally on duty.