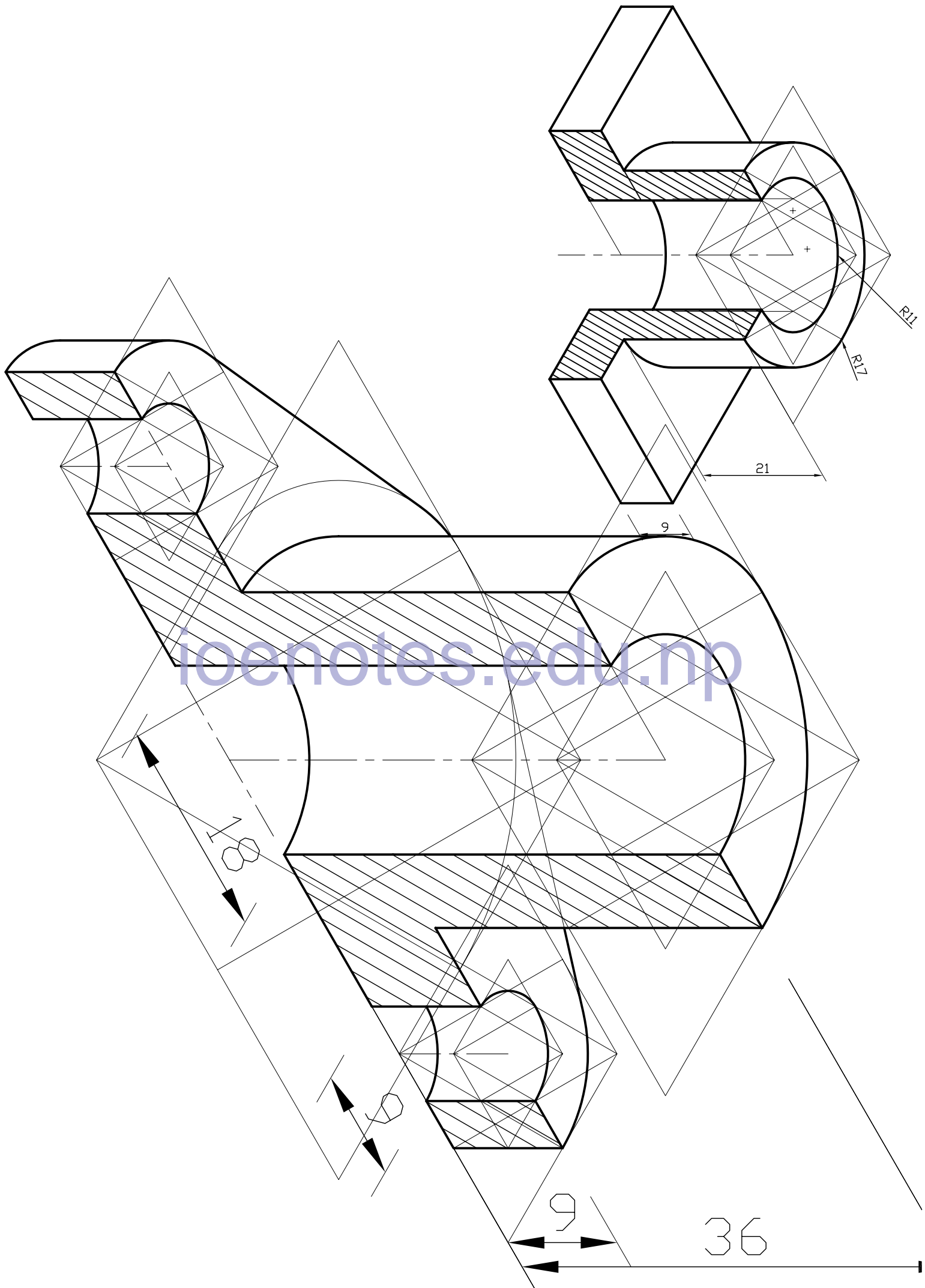


Fig ISOMETRIC PROJECTION

Drawn By :- Narayan Nyaupane



Drawn By :- Narayan Nyaupane

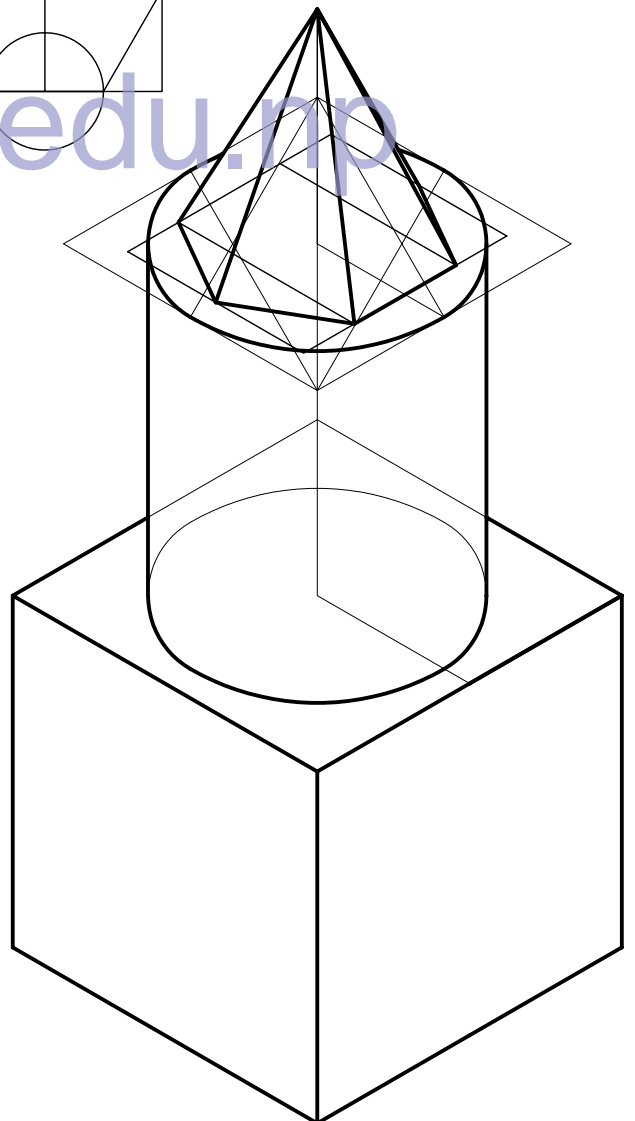
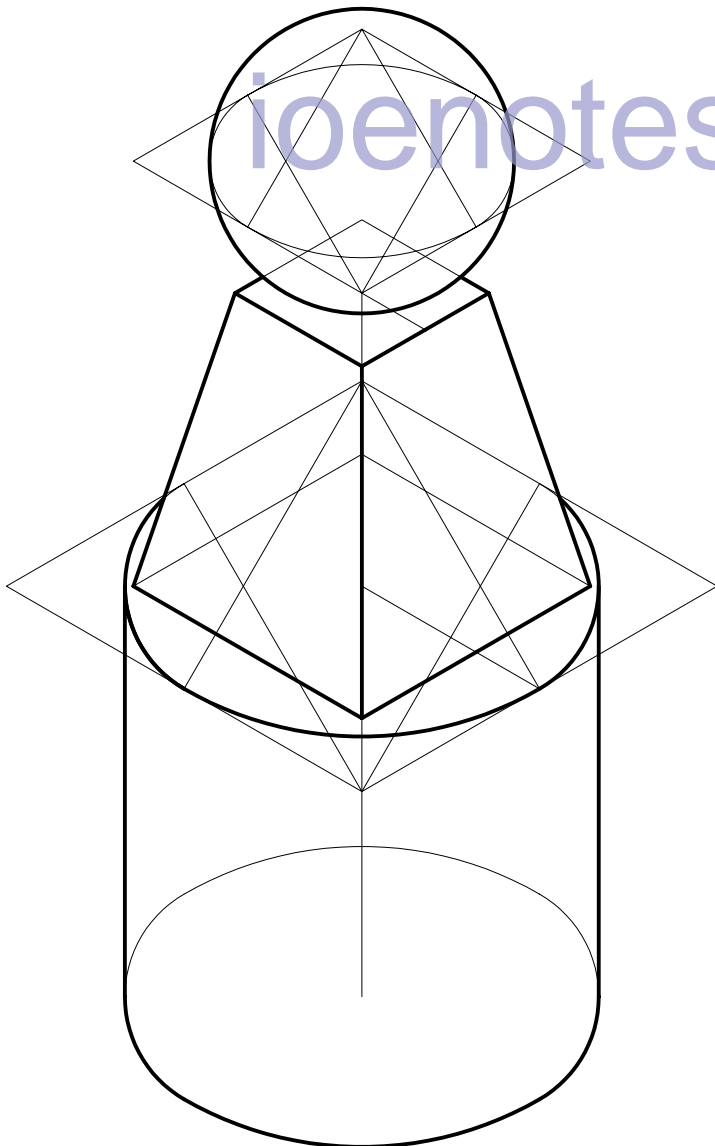
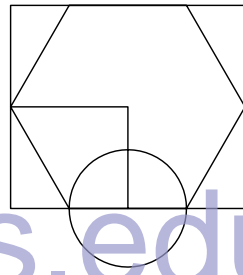
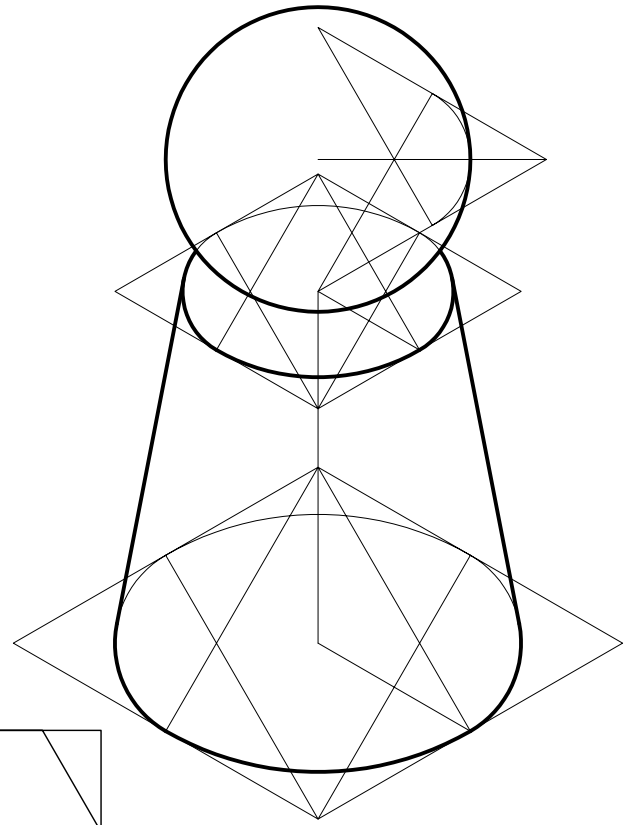
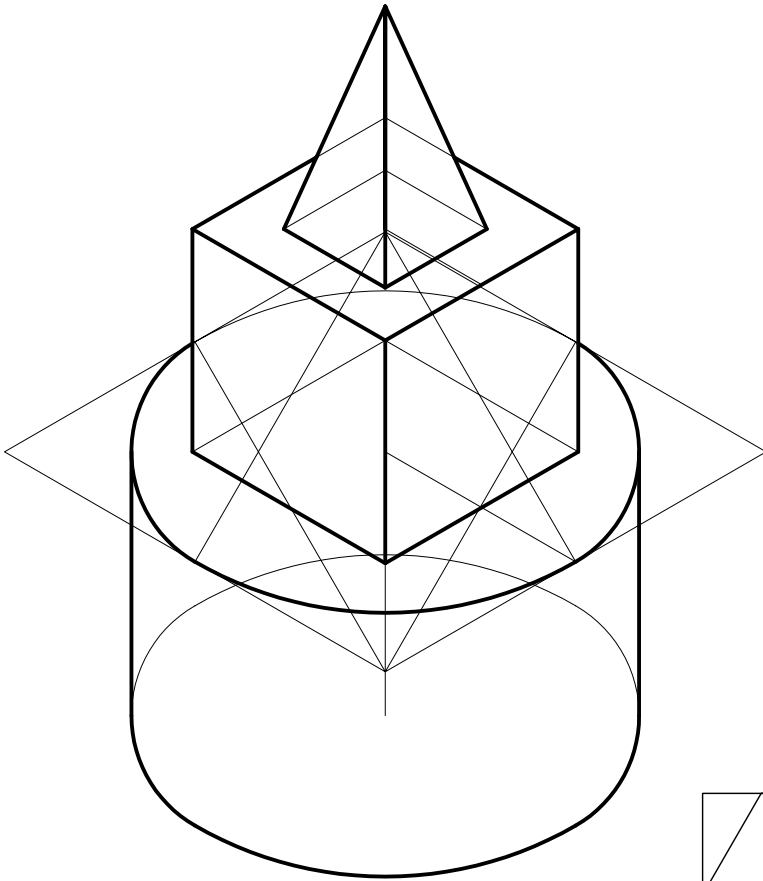
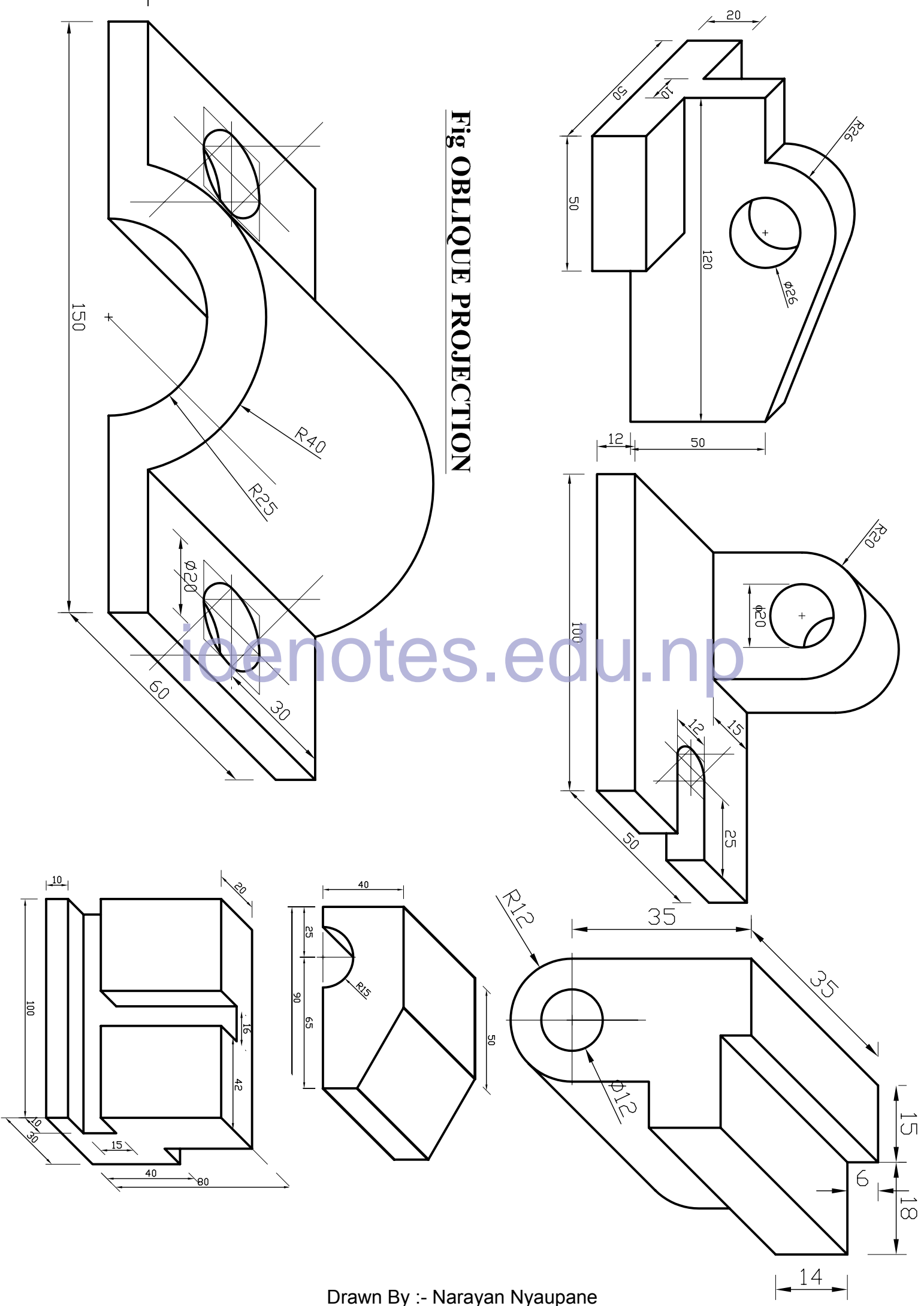
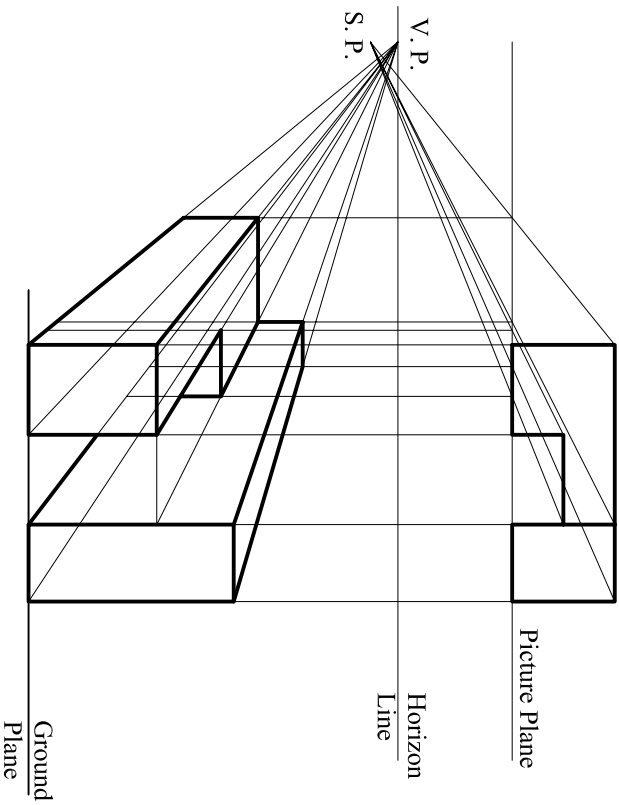
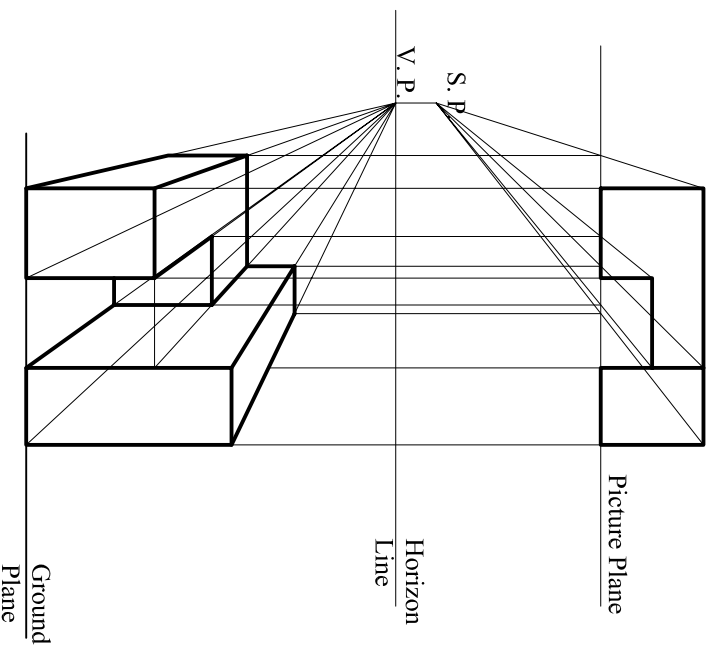
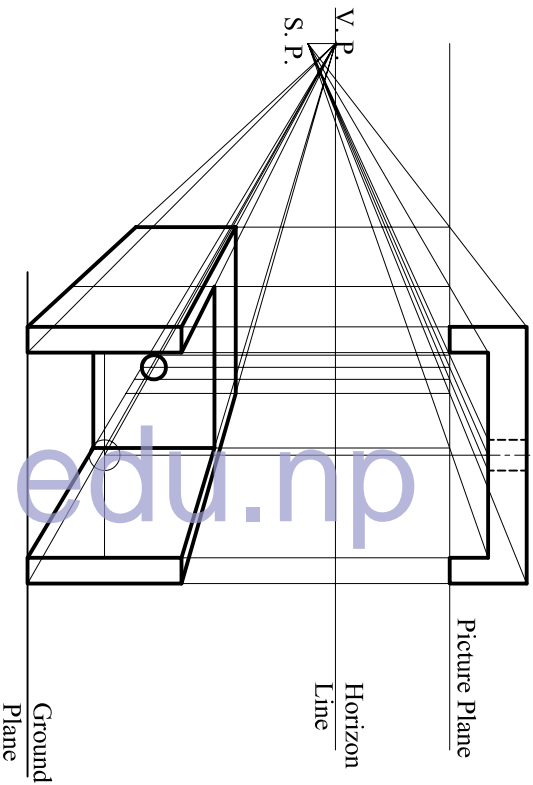
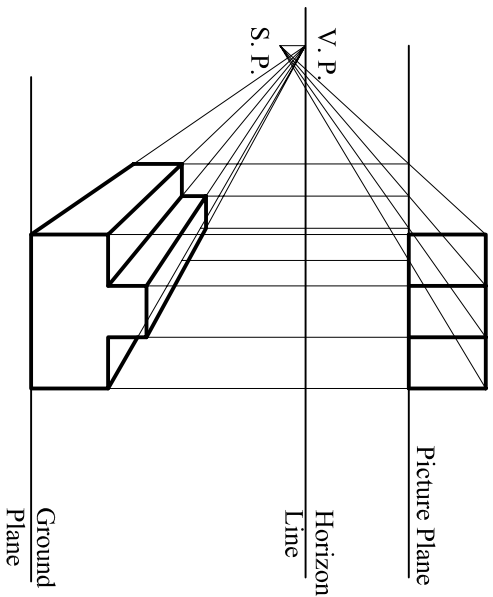


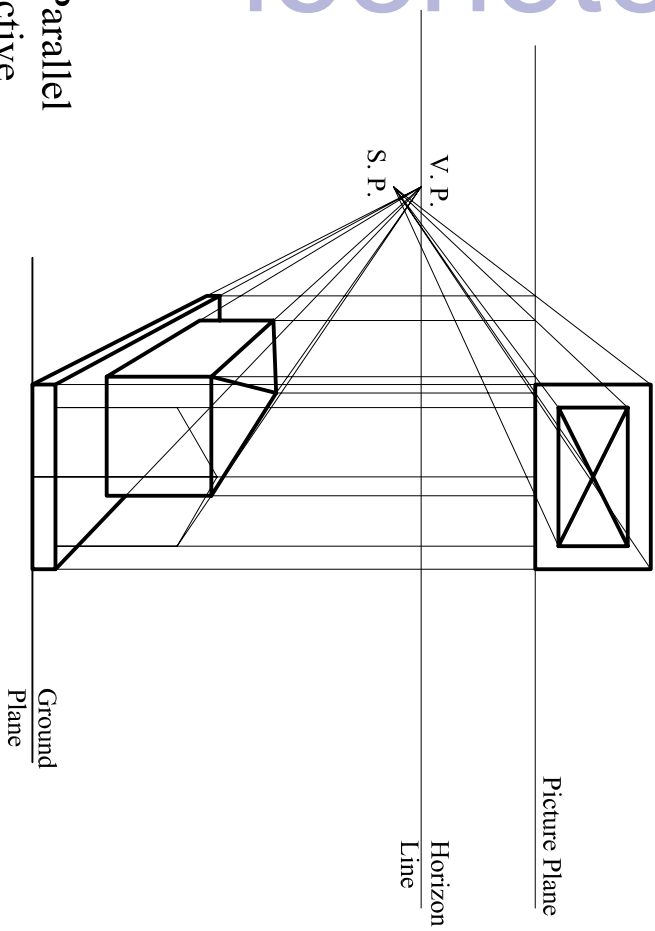
Fig OBLIQUE PROJECTION

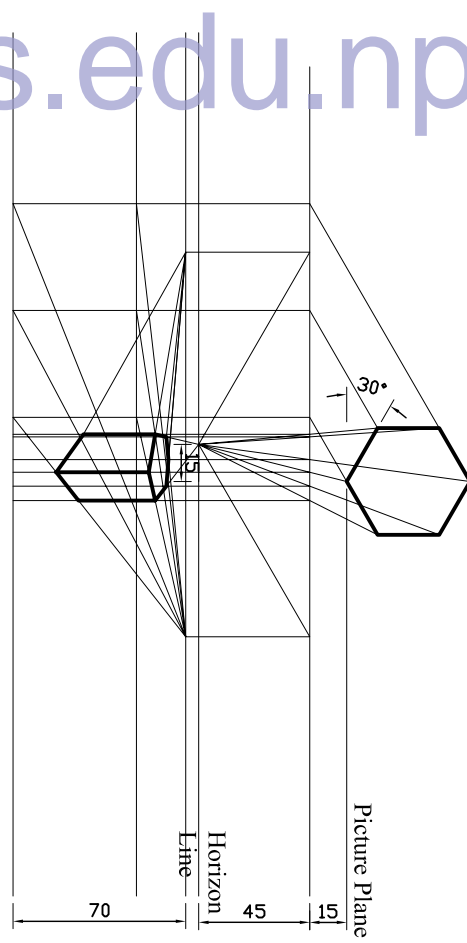
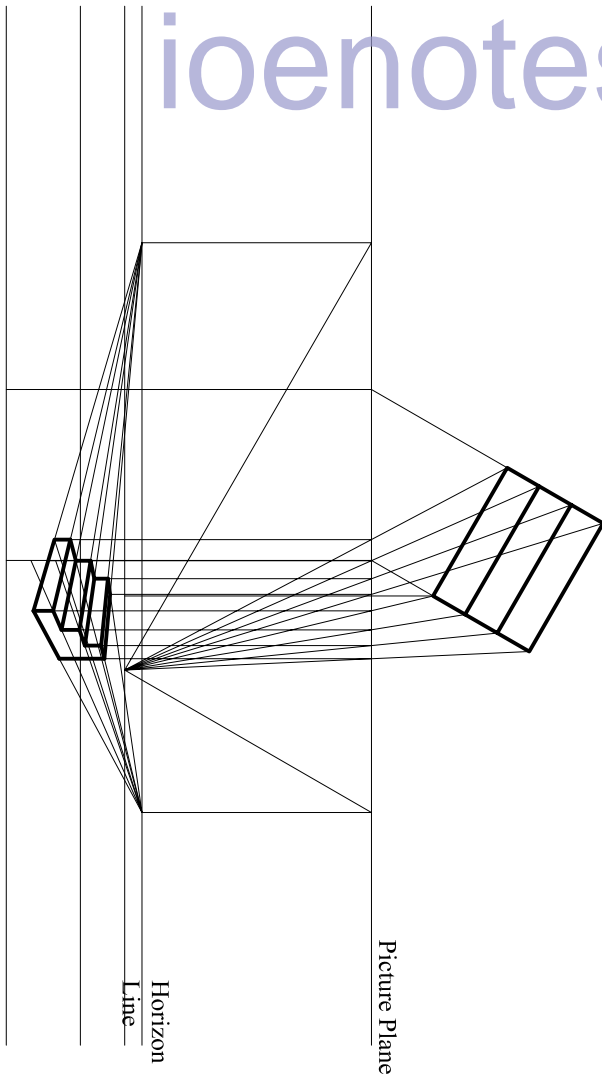
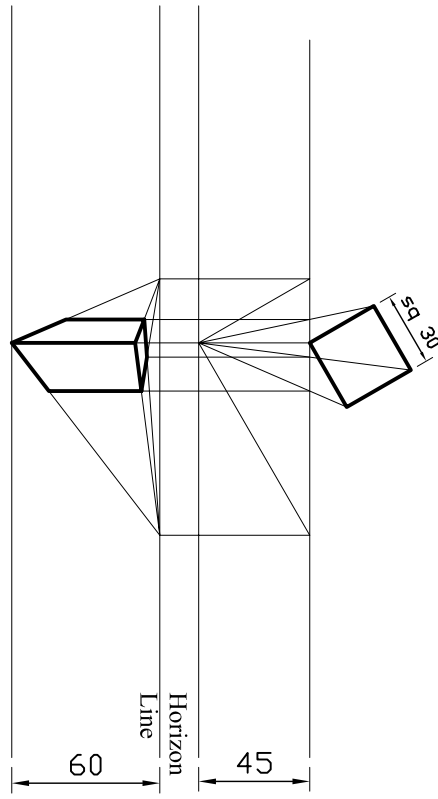
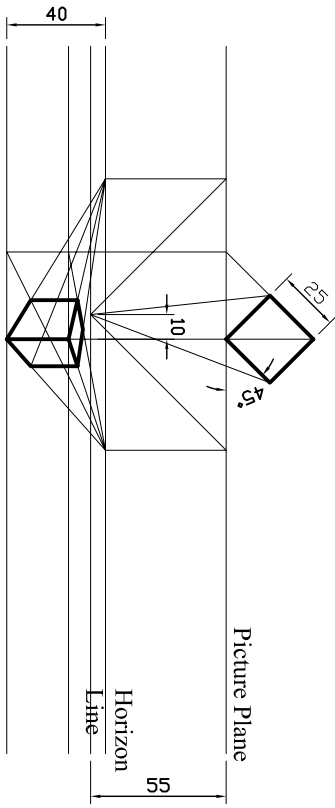


Drawn By :- Narayan Nyaupane

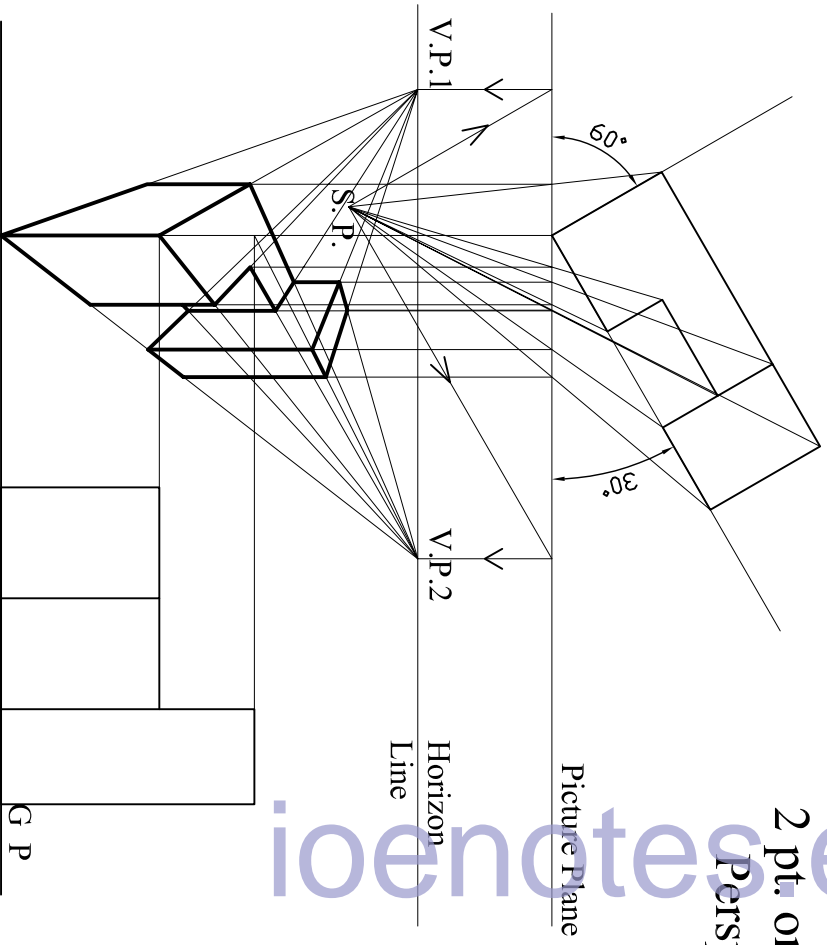
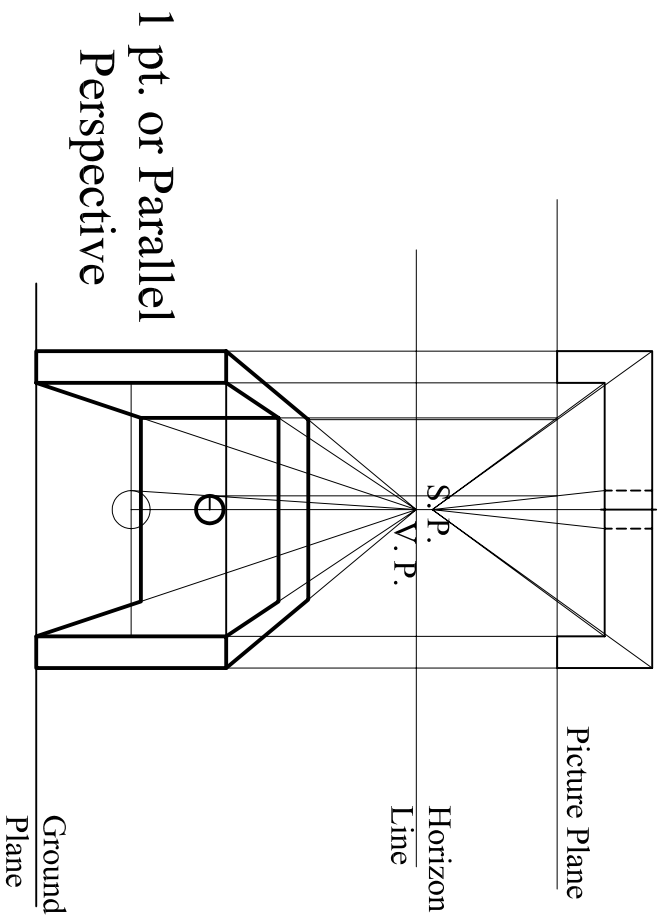


1 pt. or Parallel
Perspective

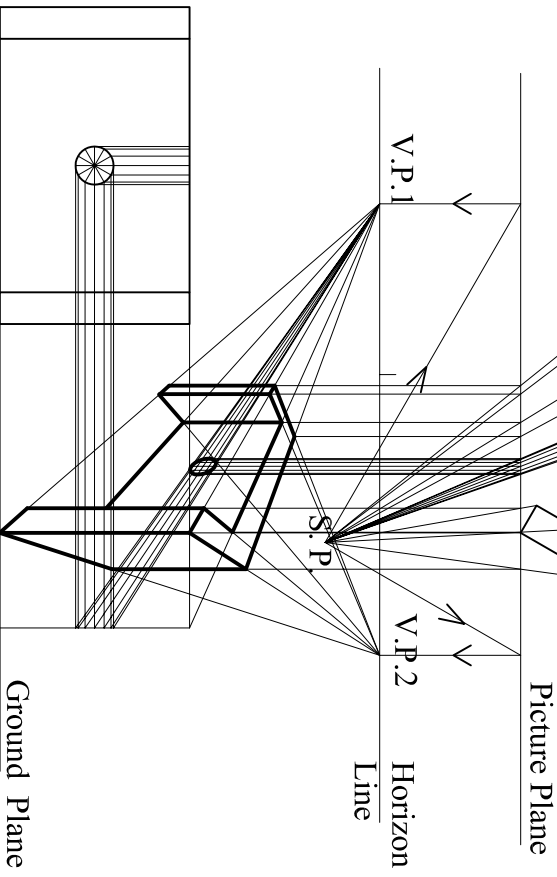
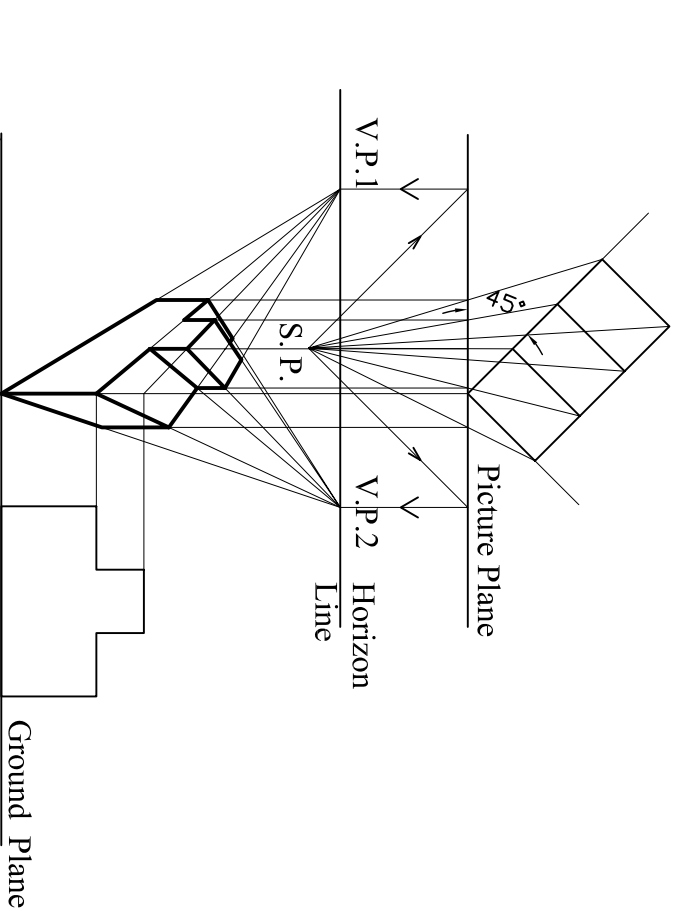




ioenotes.edu.np



2 pt. or Angular Perspective



5.1 Normal speed= H8f7

Basic Size = 45 mm

For hole H8

Tolerance = 0.039 mm

Maximum diameter of hole (D_{max}) = $45+0.039 = 45.039$ mm

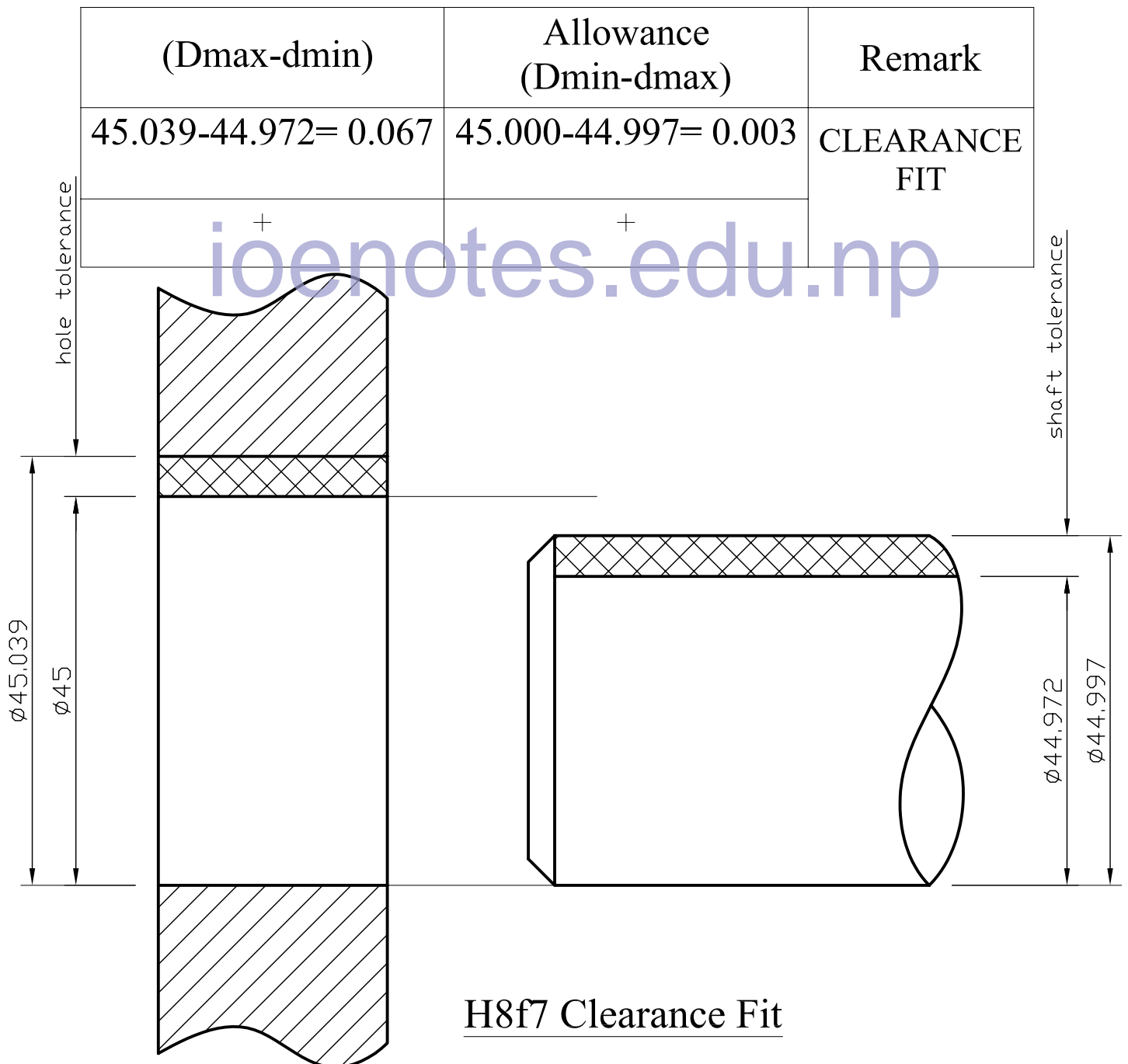
Minimum diameter of hole (D_{min}) = 45.000 mm

For shaft f7

Maximum diameter of shaft (d_{max}) = $45-0.003 = 44.997$ mm

Tolerance = 0.025 mm

Minimum diameter of shaft (d_{min}) = $45-0.003-0.025 = 44.572$ mm



H8f7 Clearance Fit

5.2

T6h5

Basic Size = 25 mm

For hole T6

Tolerance = 0.013 mm

Maximum diameter of hole (Dmax) = 25- 0.040
= 24.960 mm

Minimum diameter of hole (Dmin) = 25-0.04-0.013
= 24.947 mm

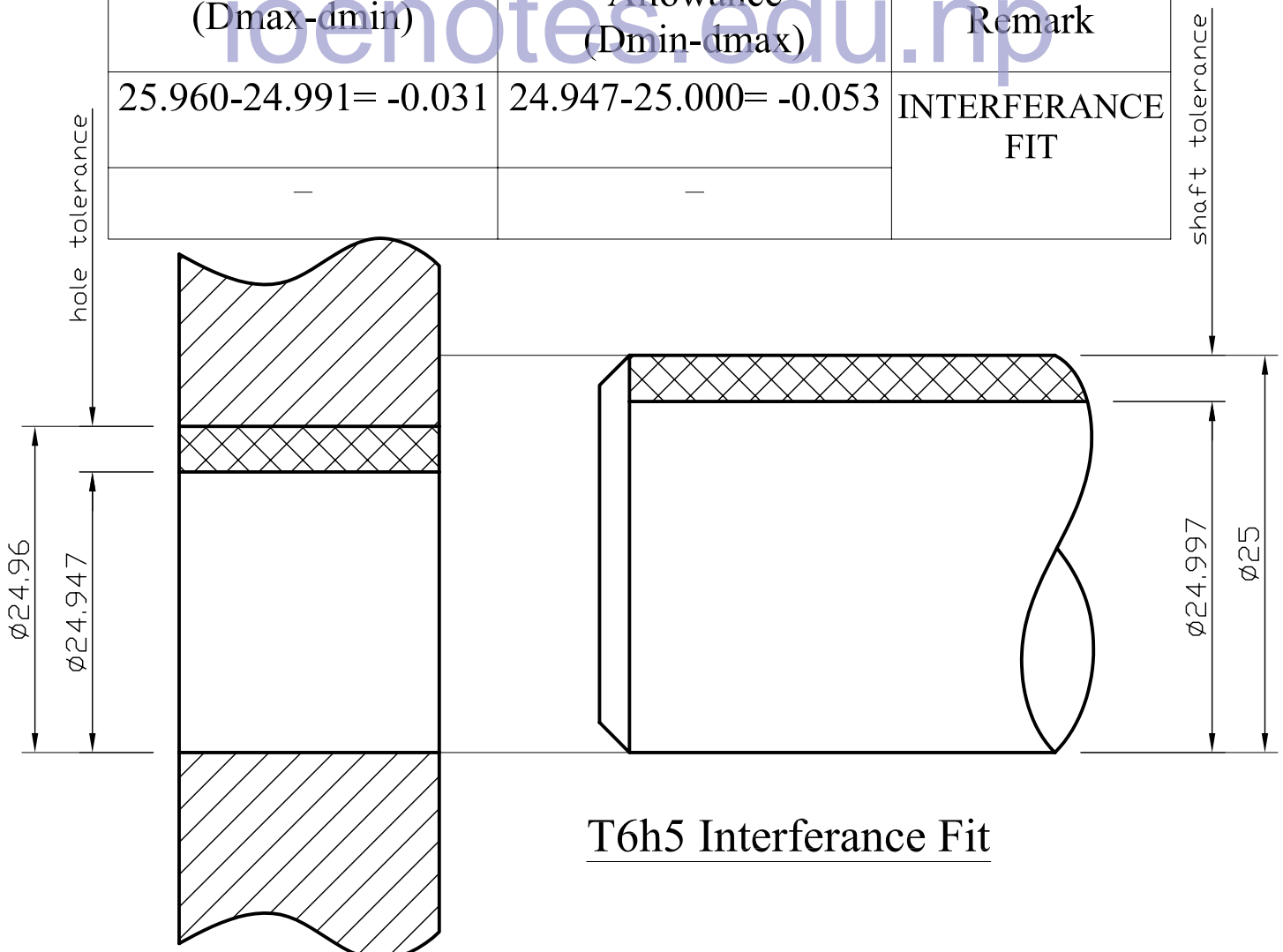
For shaft h5

Tolerance = 0.009 mm

Maximum diameter of shaft (dmax) = 25-0.000
= 25.000 mm

Minimum diameter of shaft (dmin) = 25-0.009
= 24.991 mm

(Dmax-dmin)	Allowance (Dmin-dmax)	Remark
25.960-24.991= -0.031	24.947-25.000= -0.053	INTERFERENCE FIT
-	-	



T6h5 Interference Fit

5.3 H8p7

Basic Size = 50 mm

For hole H8

Tolerance = 0.039 mm

Maximum diameter of hole (D_{max}) = $50+0.039 = 50.039$ mm

Minimum diameter of hole (D_{min}) = 50.000 mm

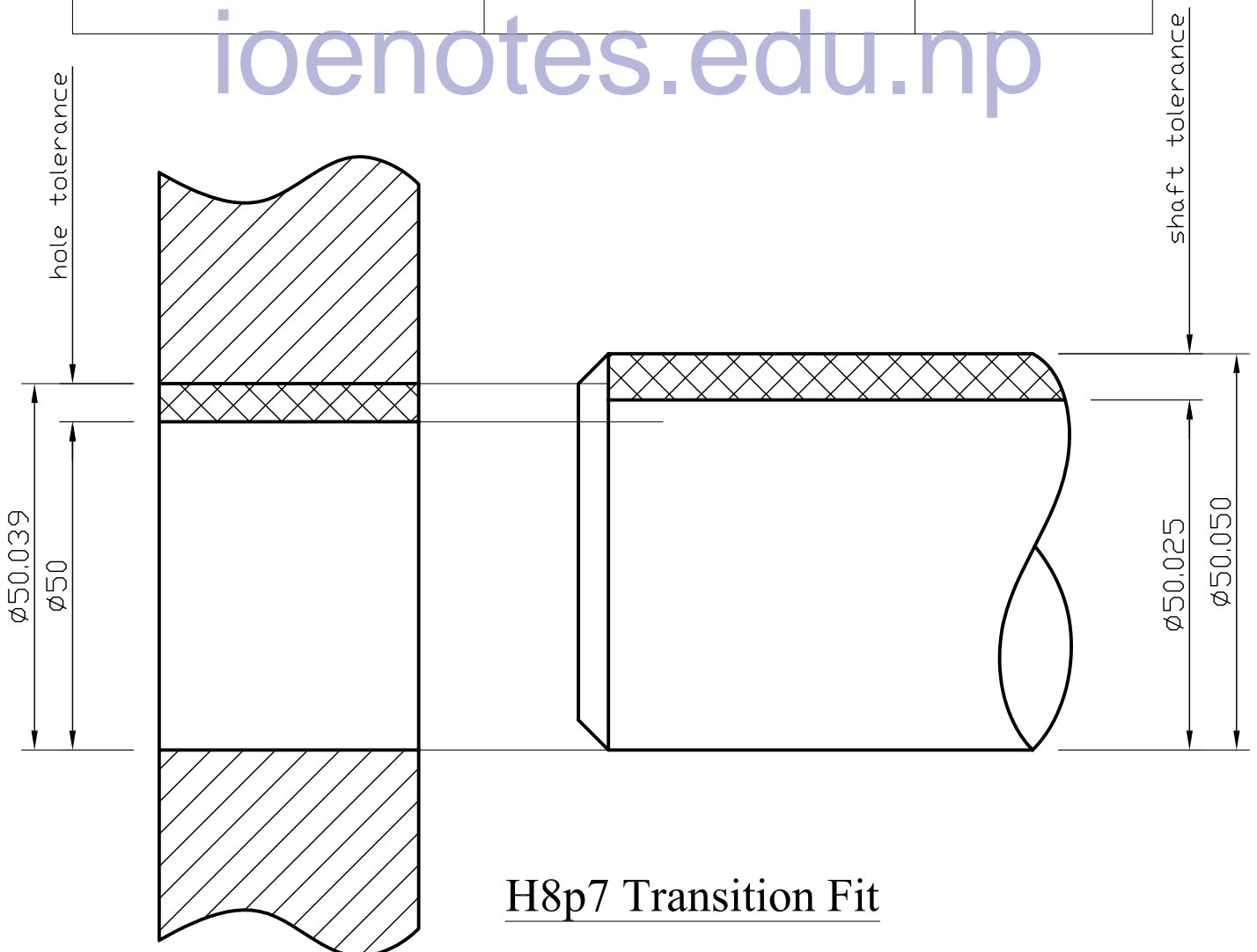
For shaft p7

Tolerance = 0.025 mm

Maximum diameter of shaft (d_{min}) = $50+0.025 = 50.025$ mm

Minimum diameter of shaft (d_{max}) = $50+0.025+0.025 = 50.05$ mm

($D_{max}-d_{min}$)	Allowance ($D_{min}-d_{max}$)	Remark
$50.039-50.025= 0.014$	$50.000-50.025= -0.025$	TRANSITION FIT
+	-	



H8p7 Transition Fit

Fig T6.2

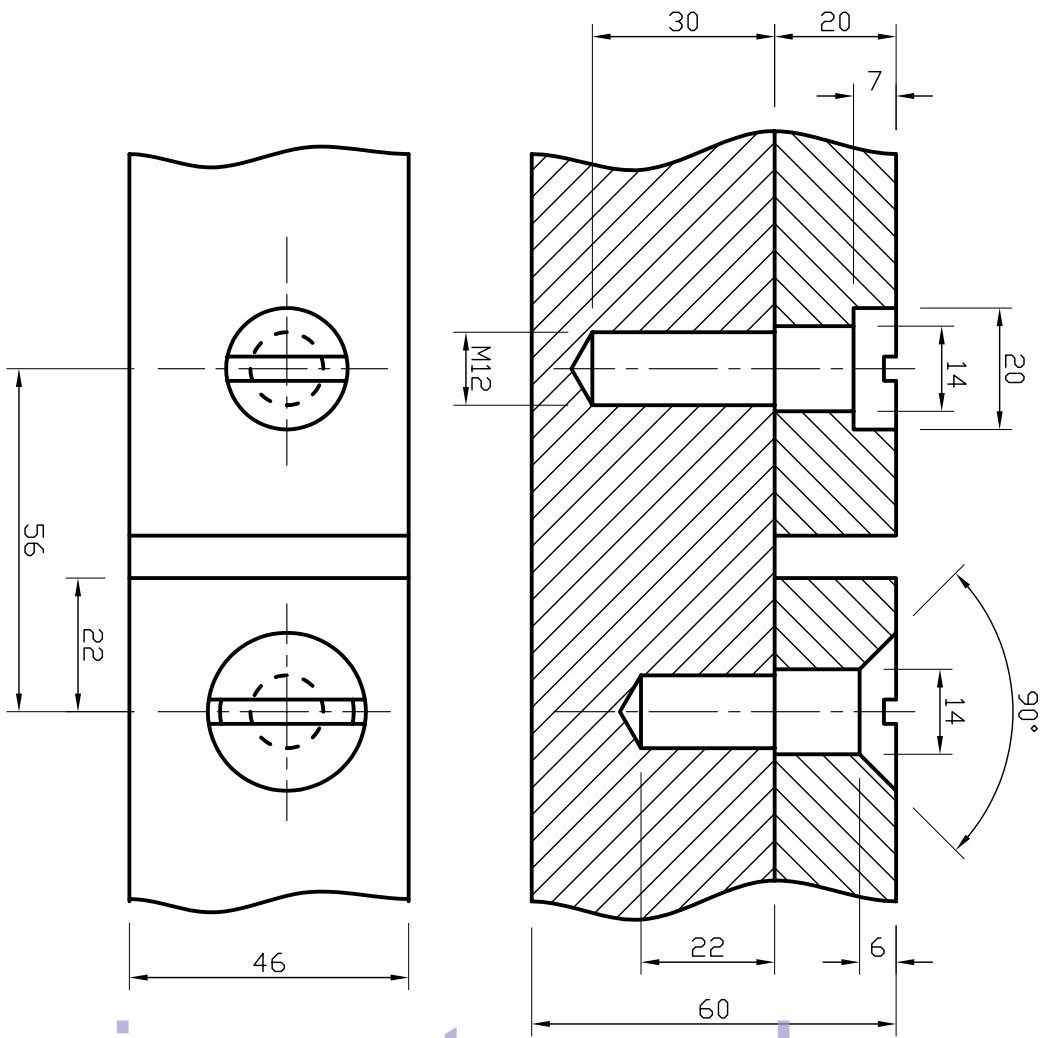
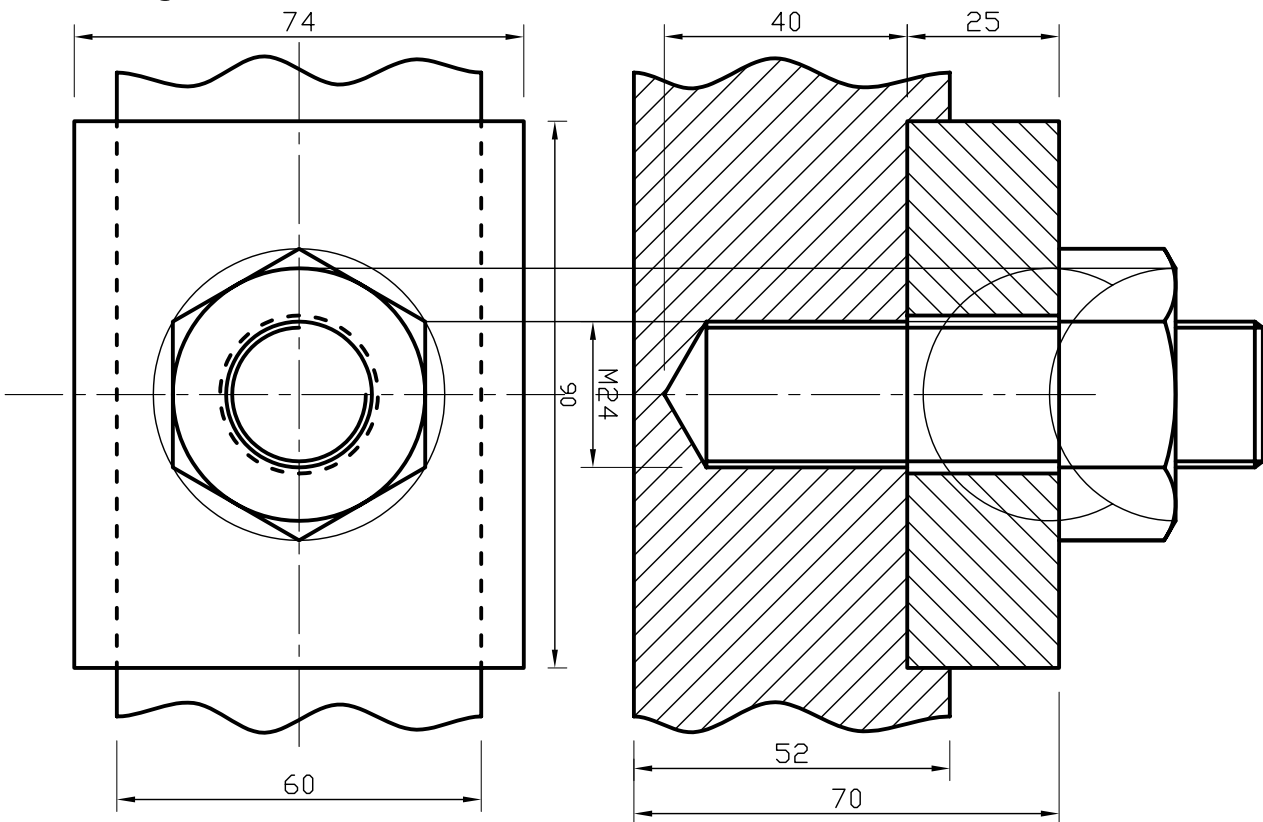
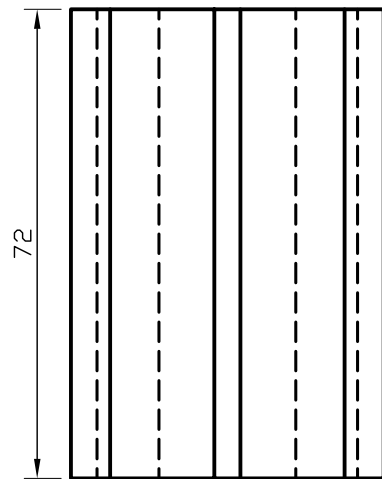
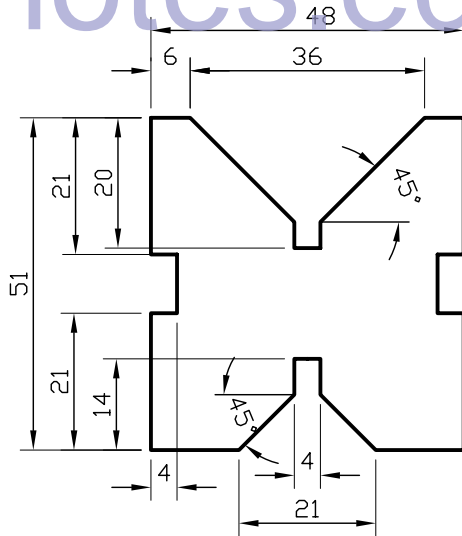
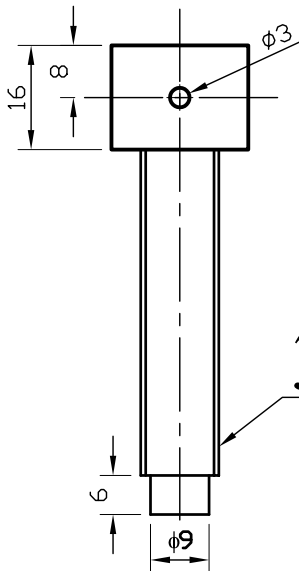
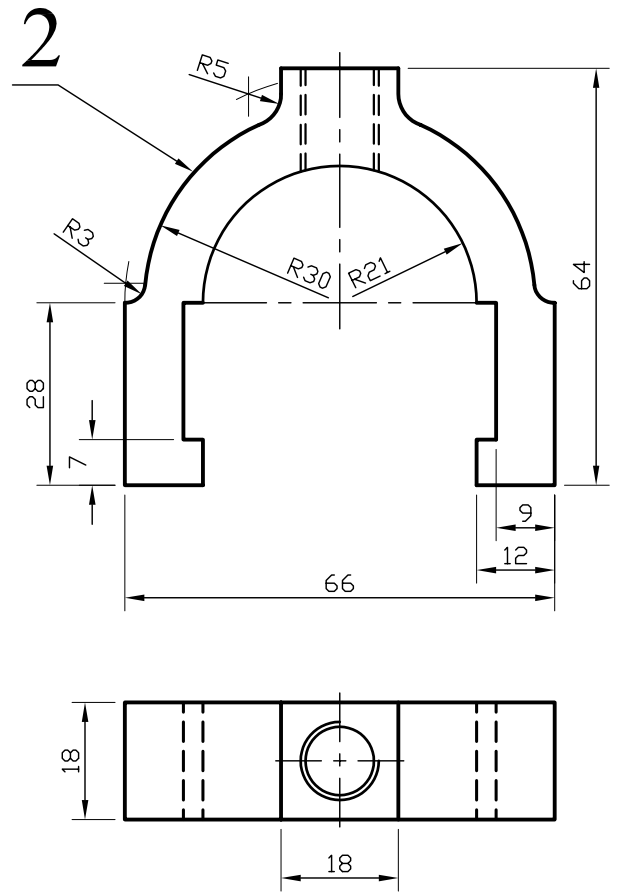
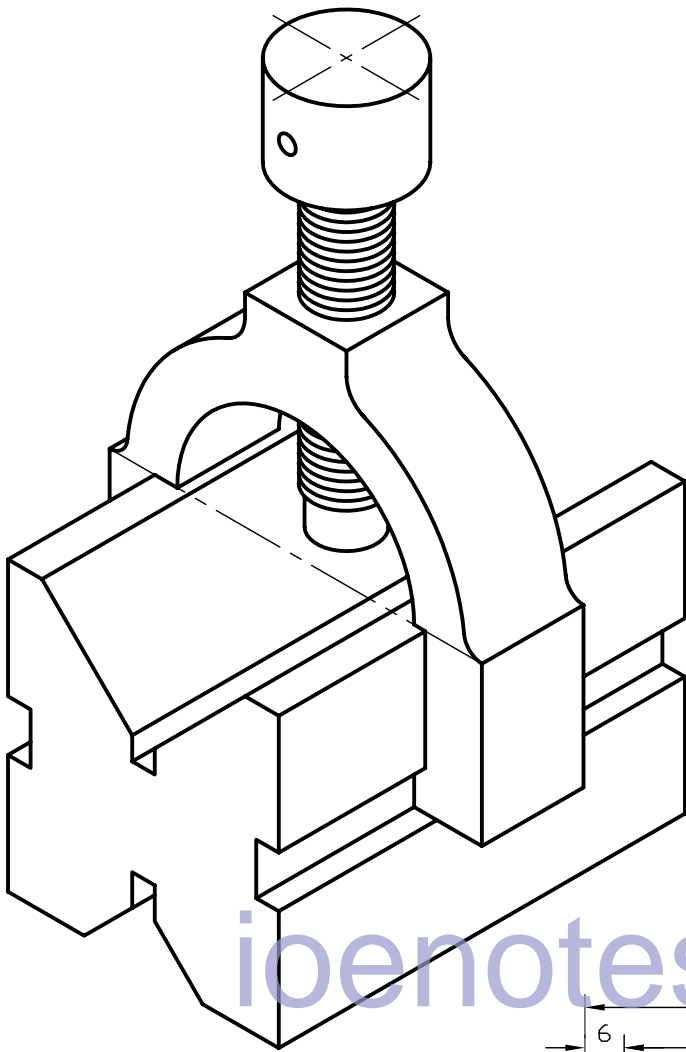


Fig T6.3



Drawn By :- Narayan Nyaupane

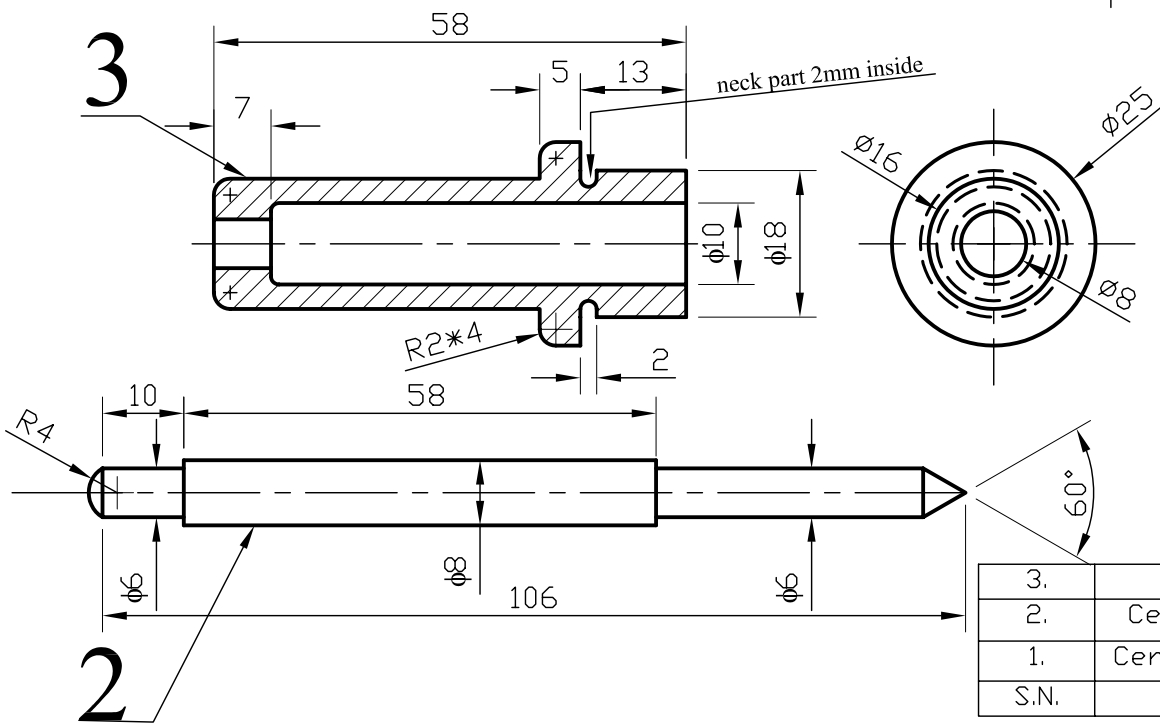
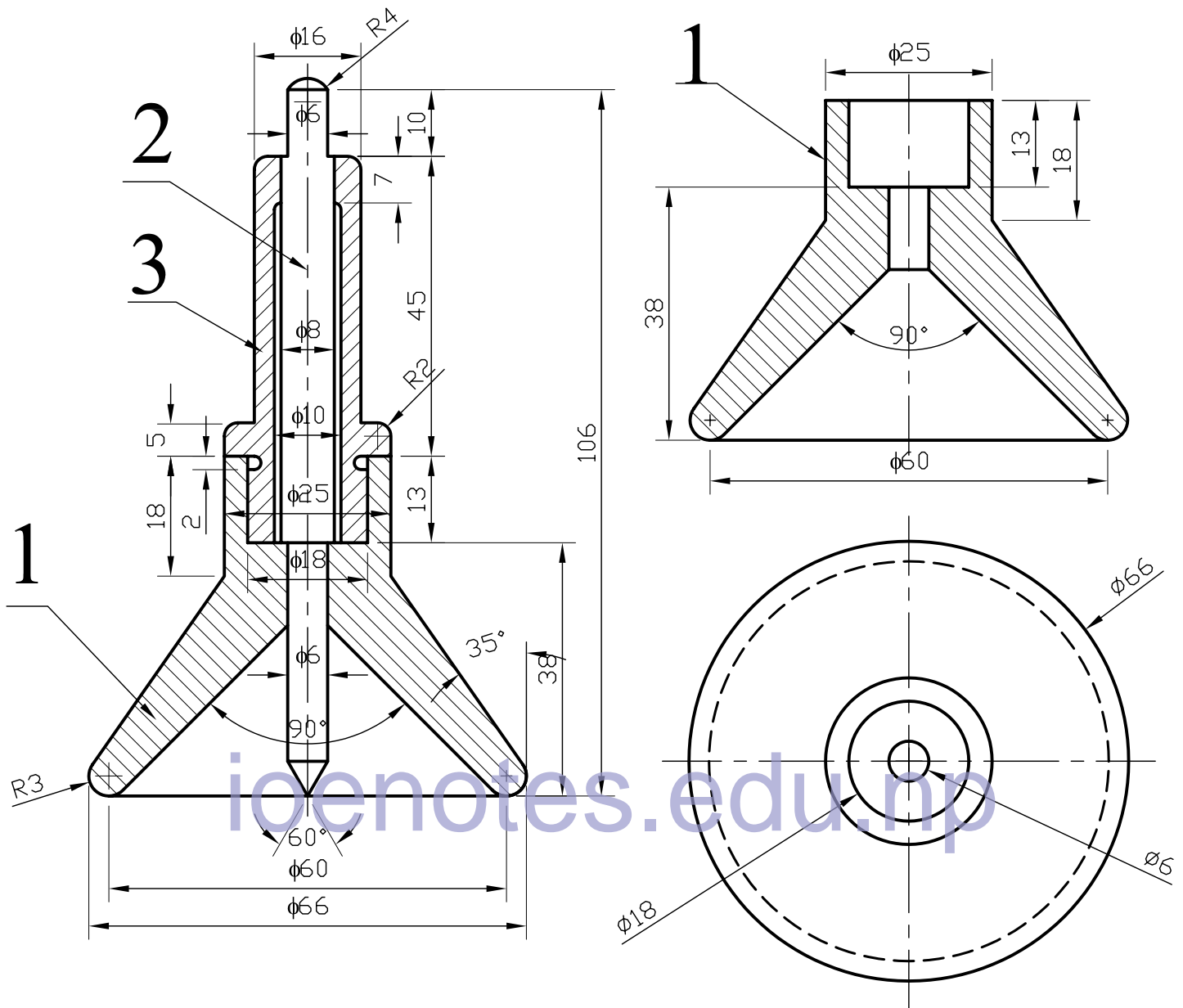


3.	Screw	1
2.	Clamp	1
1.	Block	1
S.N.	Name	Qty.

Parts List

Fig. V-block Clamp

Drawn By :- Narayan Nyaupane

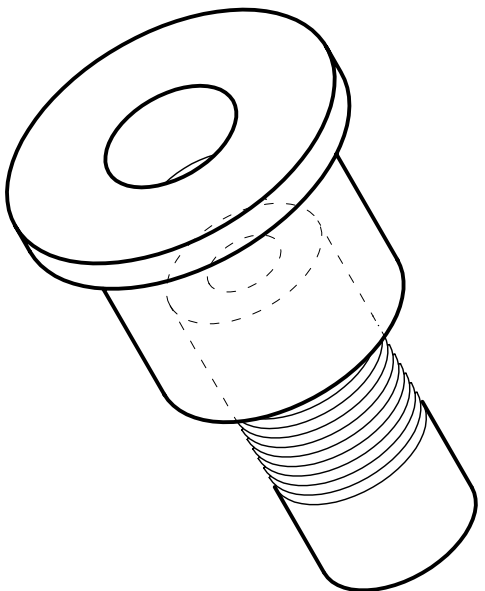


3.	Guide	1
2.	Centering Pin	1
1.	Centering Cone	1
S.N.	Name	Qty.

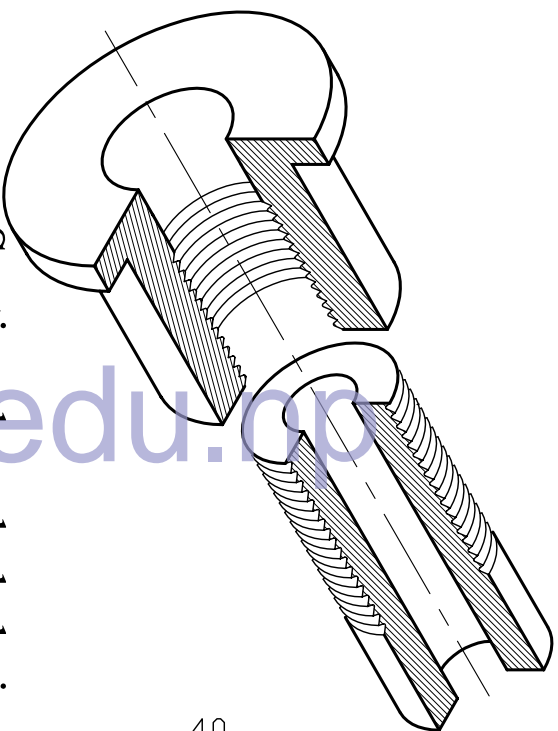
Parts List

Fig. Centering Cone

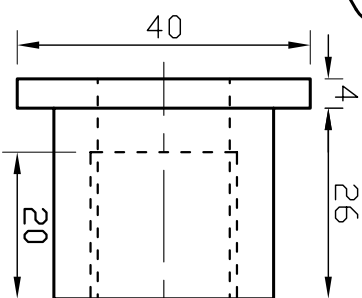
Drawn By :- Narayan Nyaupane



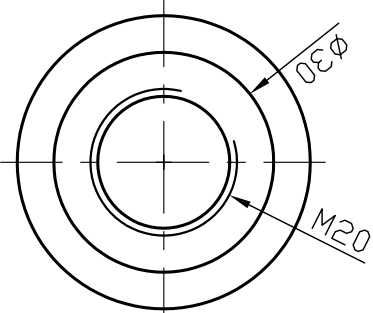
Assembled Isometric View



Sectional exploded view

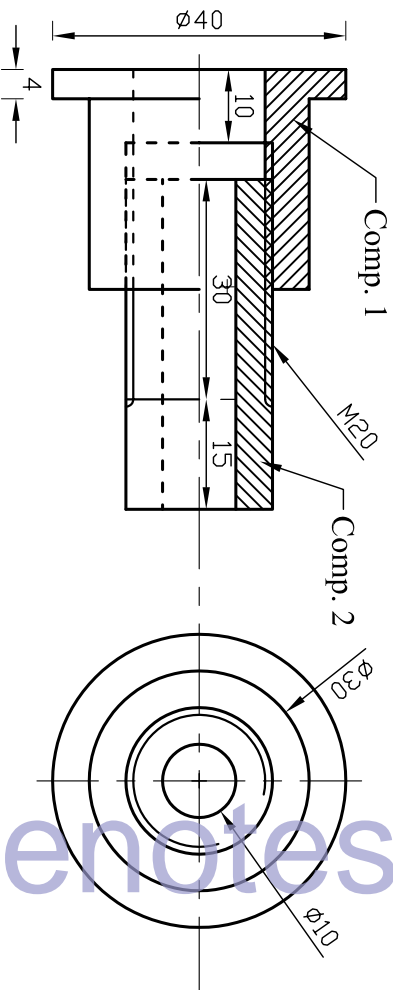


FV

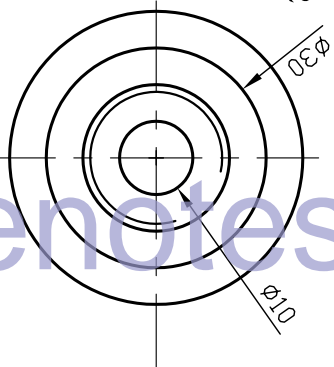


END VIEW

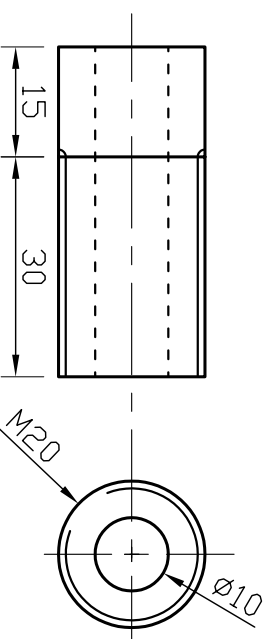
Component NO. 1, 1 OFF (M.S.)



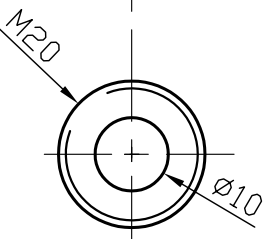
Half Sectional Assembled FV



End View
(RHS View)



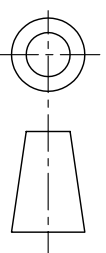
FV



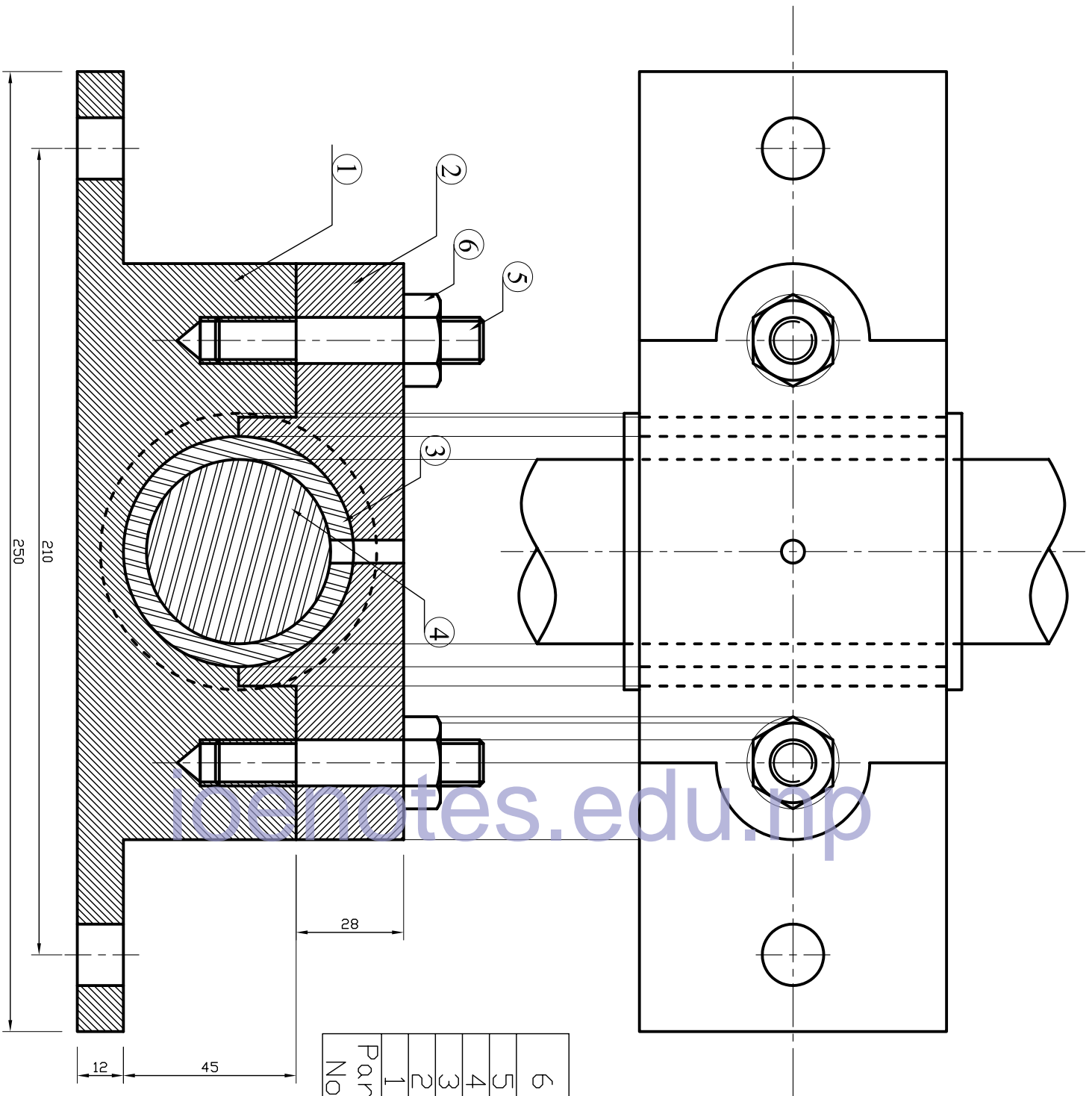
END VIEW

Component NO. 2, 1 OFF (M.S.)

2	Component no. 2	1	
1	Component no. 1	1	
St. No.	Name of Part	No. Off	Remark



All dimensions are in mm



Part No.	Name of parts	No. off	Remark
1	Base	1	
2	Cap	1	
3	Bush	1	
4	Shaft	1	
5	M12 stuff	2	
6	M12 Nut	2	

Drawn By :- Narayan Nyaupane

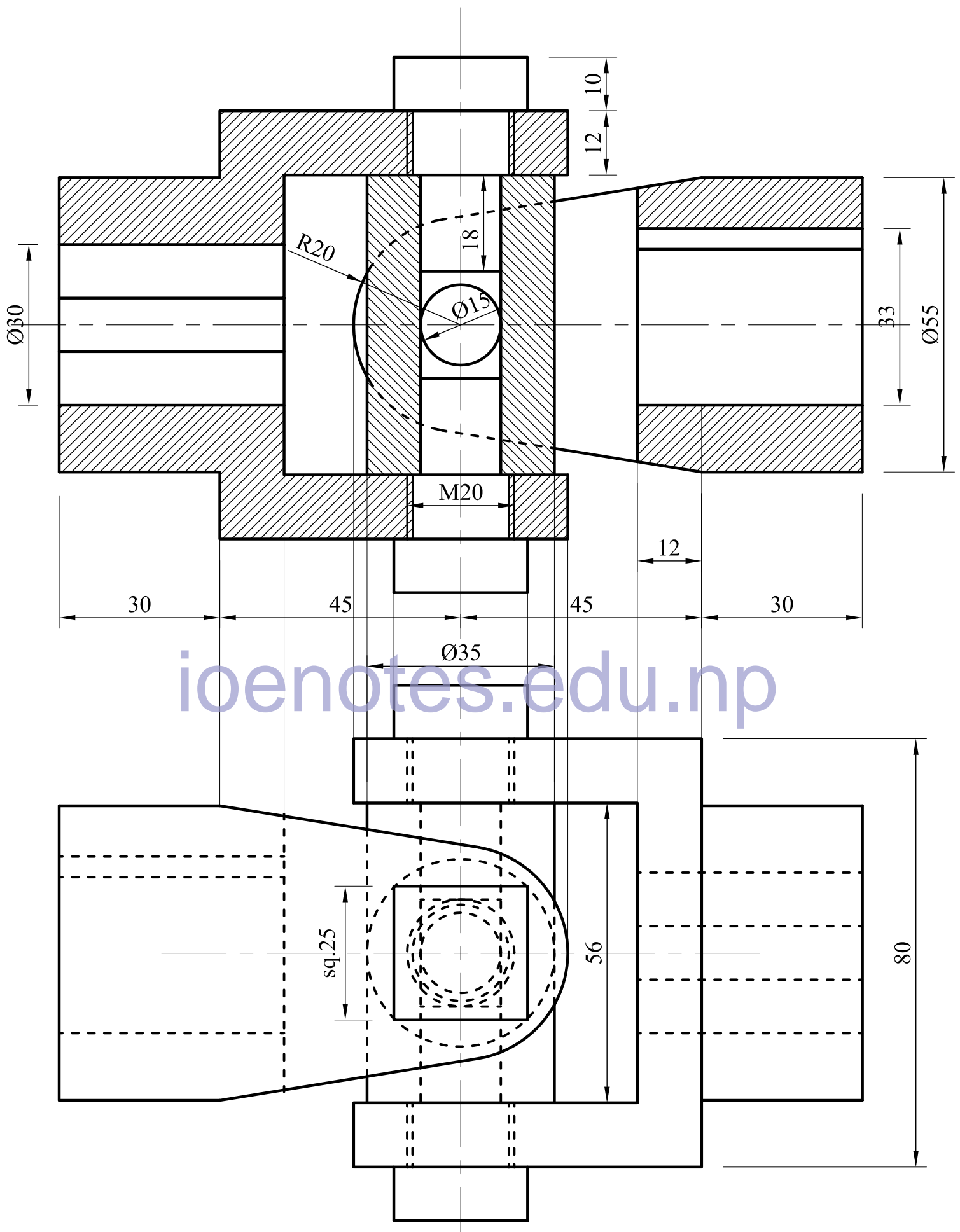
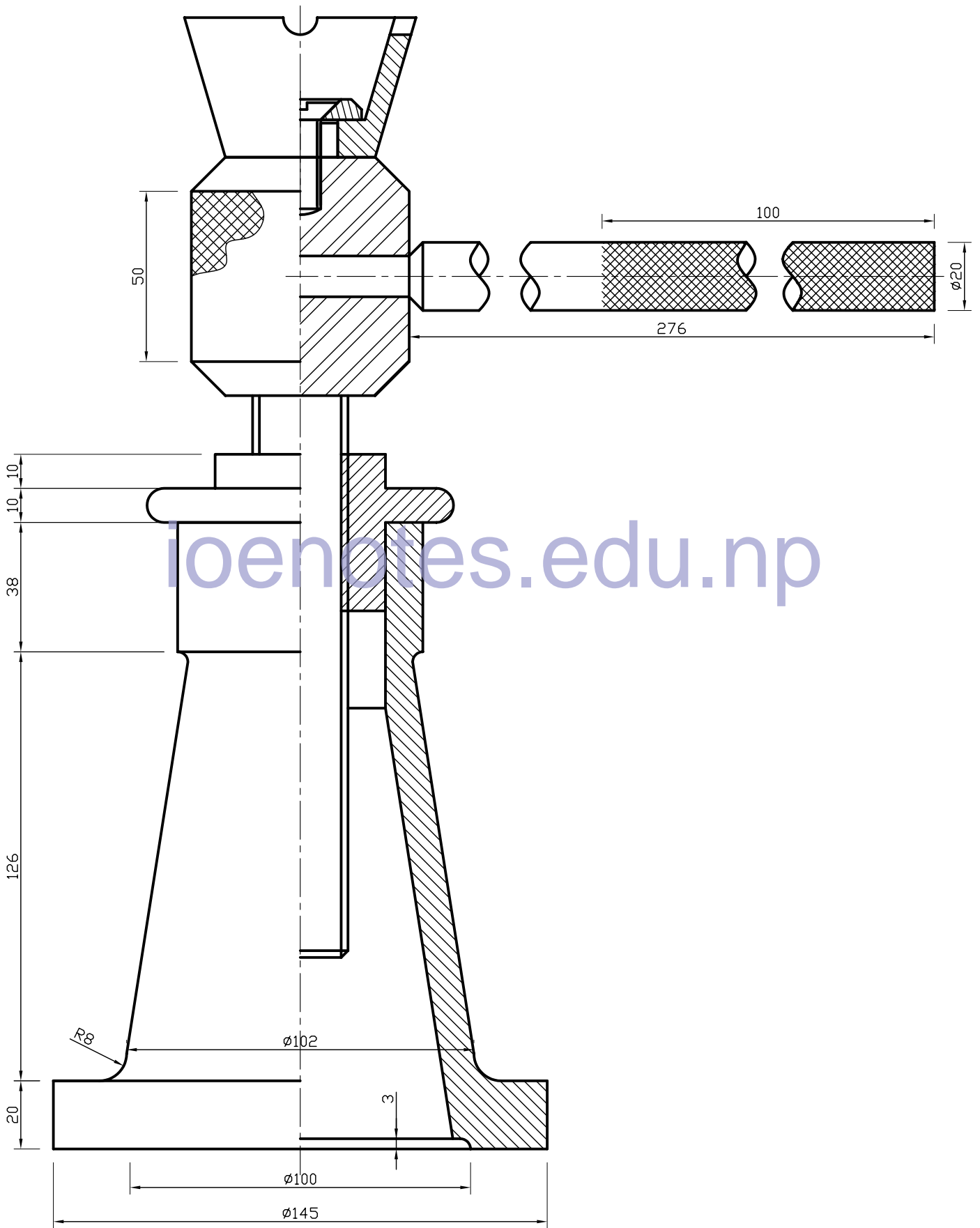


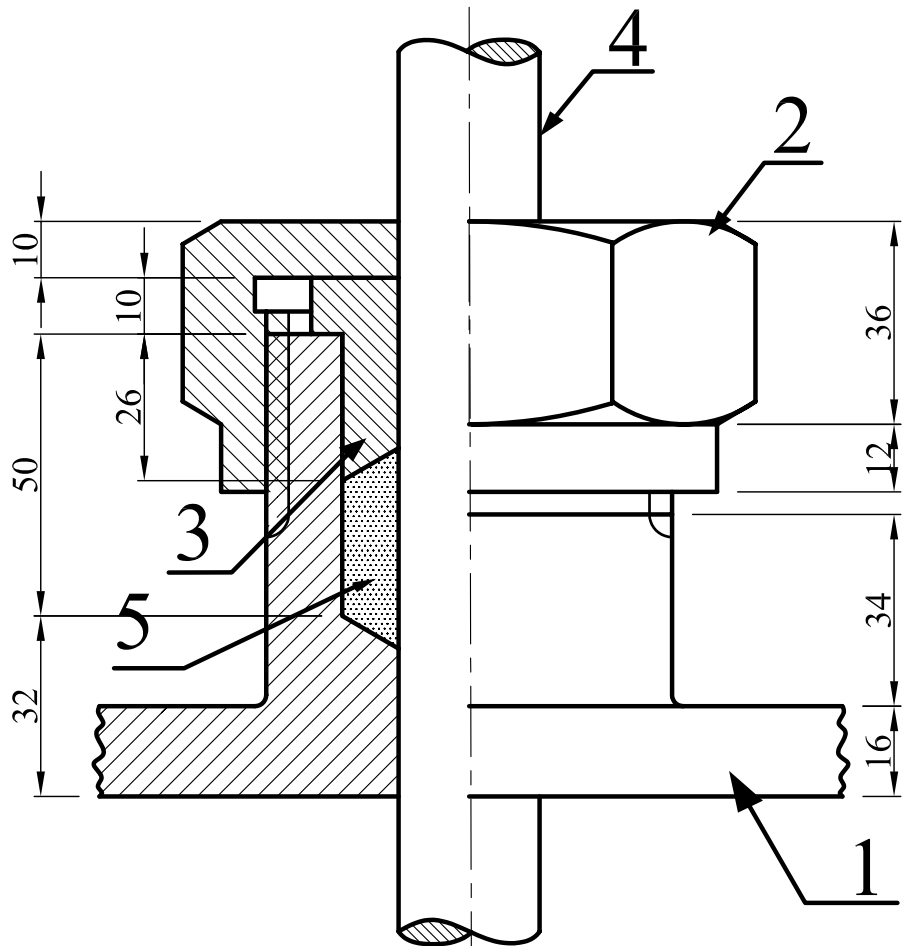
Fig. Universal Coupling

Drawn By :- Narayan Nyaupane

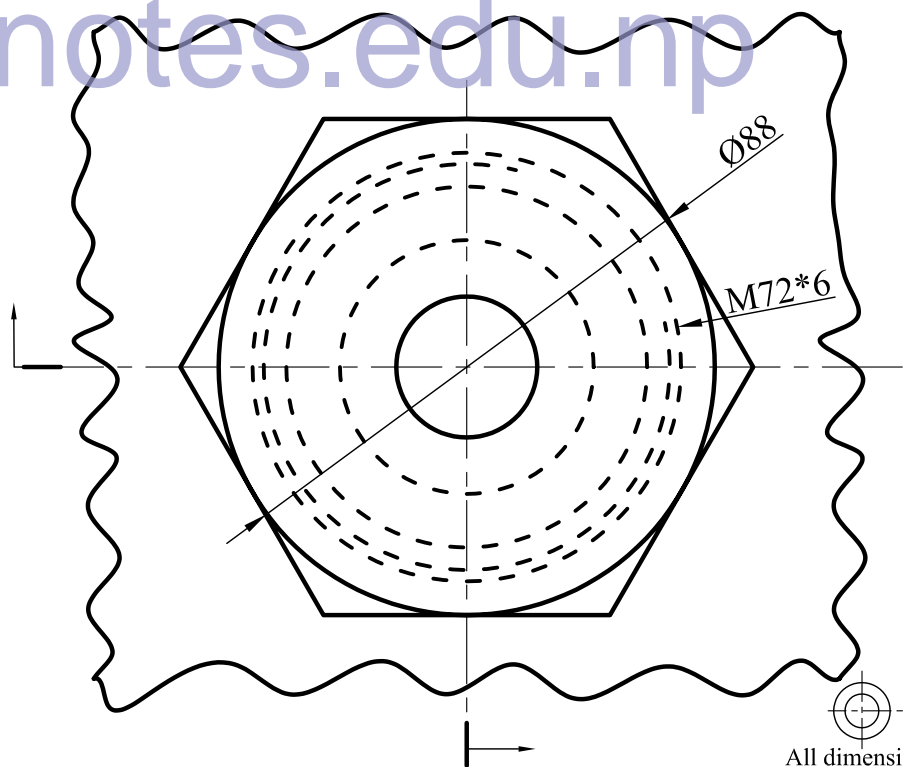


SCREW GAUGE

Drawn By :- Narayan Nyaupane



ioenotes.edu.np



All dimensions are in mm

5	Packing		Asbestos	
4	Piston rod	1	C-30	
3	Gland bush	1	Brass	
2	Nut	1	C.I.	
1	Cylinder	1	C.I.	
Part No.	Name of parts	No. off	Material	Remark

Fig. Stuffing Box

Drawn By :- Narayan Nyaupane

Antivibration Mount

