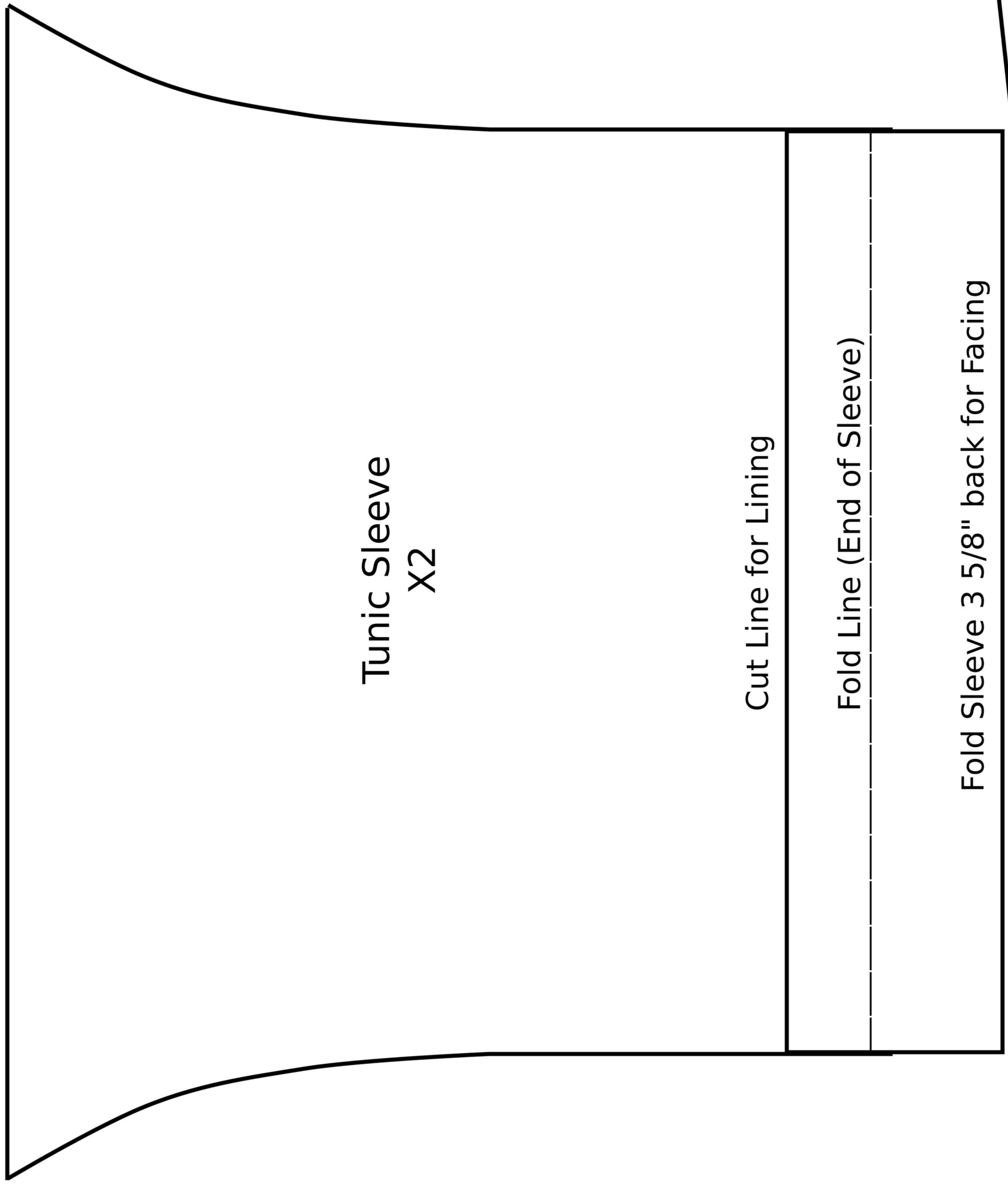


5/8" Seam Allowance Unless Specified

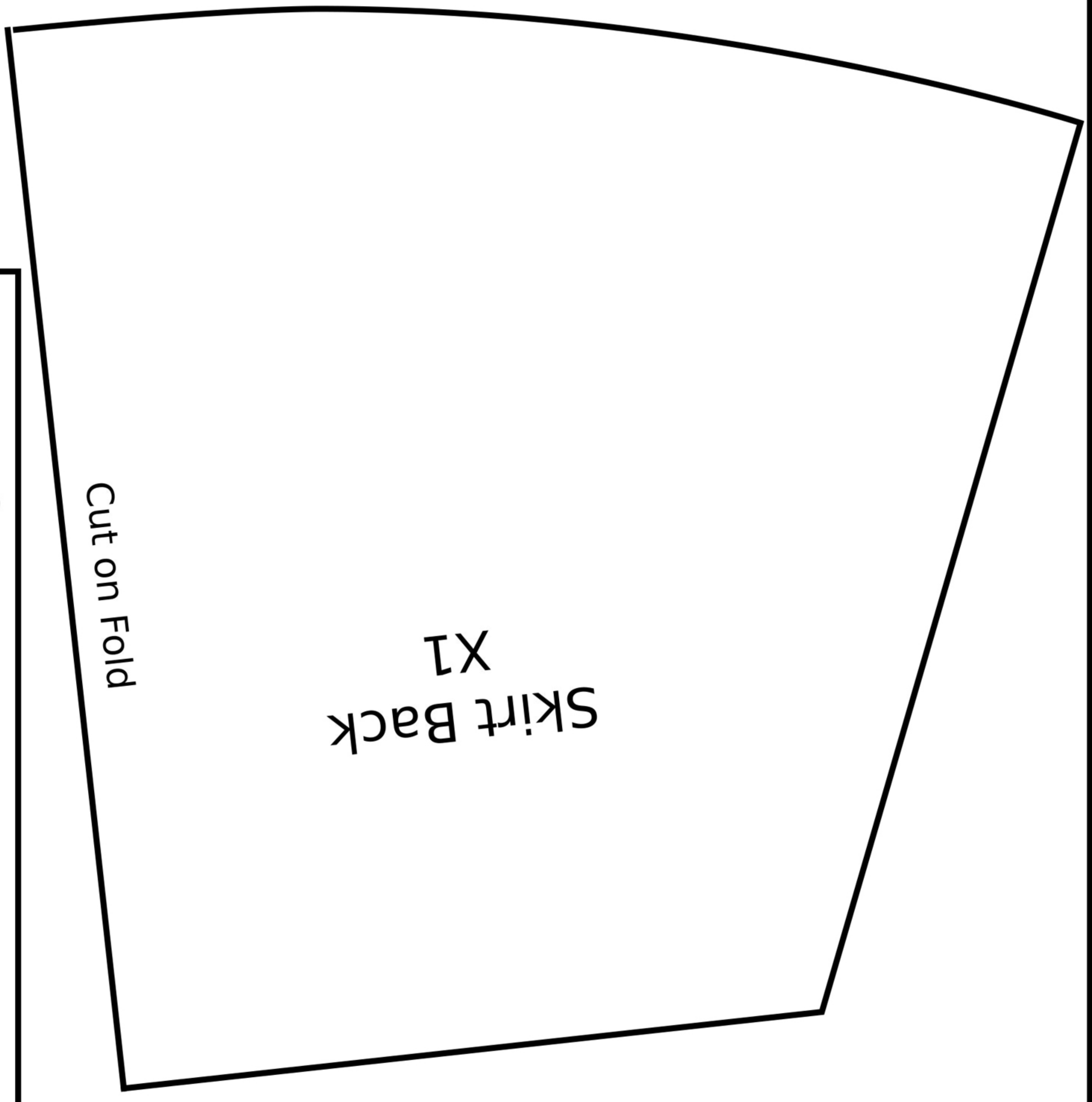


Tunic Sleeve
X2

Cut Line for Lining

Fold Line (End of Sleeve)

Fold Sleeve 3 5/8" back for Facing



Skirt Back
X1

Cut on Fold

5/8" Seam Allowance Unless Specified

Collar
X1

Tabbard
X4

Obi
X2

Cut on Fold

