

Congratulations on the purchase of your new Delphi DS150e Diagnostic system!

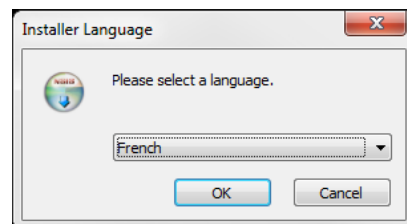
▶ Installing the software



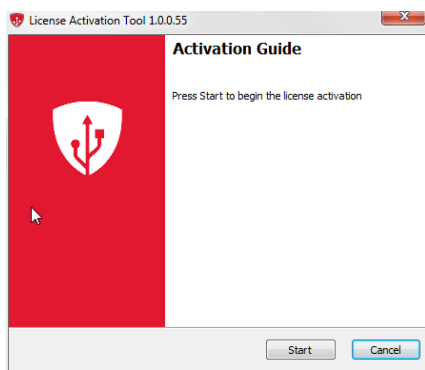
1 From the DVD menu click on « PC - SW »



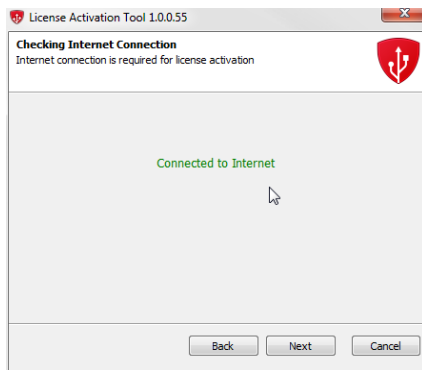
2 Click on Diagnostic SW Install (Ensure your dongle is fitted on a USB port at this point)



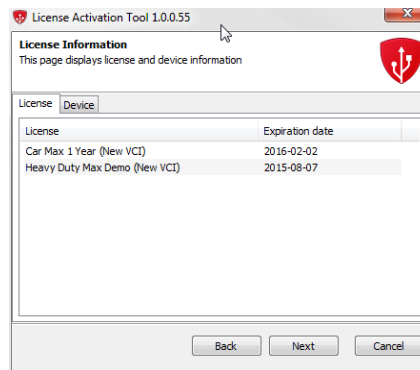
3 Select the installation language (doesn't determine the display language of the software)



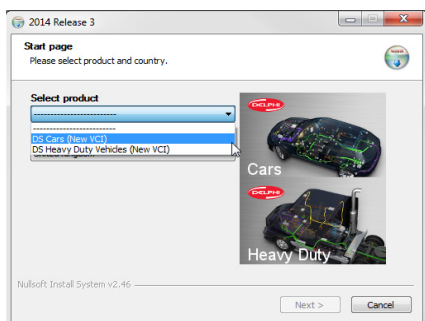
4 The Licence Activation Tool runs, click start to activate your license



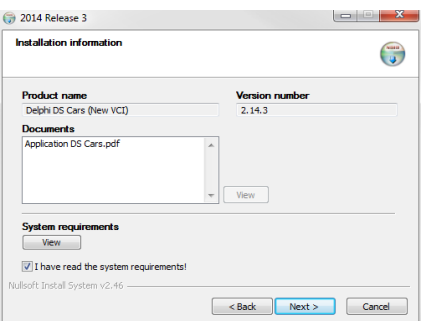
5 Internet connection is required for activation. It won't be possible to go further without internet connection



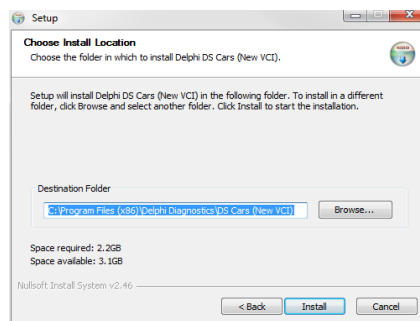
6 The current subscribed licenses are shown, check they are correct and click Next



7 Select the product you wish to install « DS Cars » or « DS Heavy duty ». If both are required the installation must be performed twice (one for each)

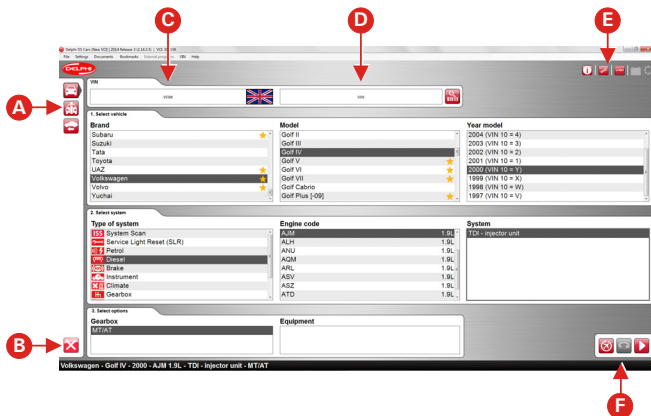


8 Check that System requirements match computer configuration, tick the checkbox and click Next



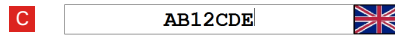
9 Select the desired folder, click install and wait for the installation to complete. It is recommended not to change the destination folder.

Software main menu



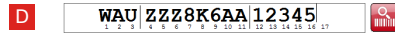
- A**
 - Classic view**
Simple selection by make, model, year and system
 - Information/Tree structure**
Selection by make, model, year and system with functions breakdown and information on diagnostic socket and engine code location
 - History**
Shows the history of the last diagnosed vehicles for quick selection
- B** **Quit Program**

VRM lookup



Type the VRM of the vehicle and press « Enter » Key to lookup the vehicle. (Available in United Kingdom only).

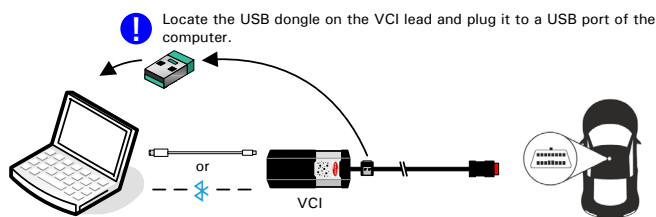
VIN lookup



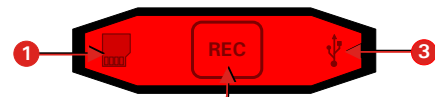
Type the VIN or click on the button to retrieve the VIN from the vehicle (the VCI must be connected to the vehicle and the VCI must be setup in the hardware settings)

- E**
 - Vehicle Technical Information**
(maintenance schedule, Adjustment data, repair information, etc. Only available when online.)
 - Website links**
 - Generic EOBD Scantool**
 - Vehicle battery voltage level indicator**
 - Activity Indicator**
- F**
 - Flight Recorder**
This functions records the selected parameters while driving the vehicle. Once the FR session is configure press, the REC button at the rear of the VCI to start recording
 - ISS (Intelligent System Scan)**
This function scans all ECU fitted on the vehicle and reports found Diagnostic Trouble Codes. Select « System Scan » in « Type of System » list to enable this button.
 - Diagnostic**
Access to all Diagnostic functions supported by the selected ECU

Connection to vehicle



Rear VCI view



- 1 MicroSD slot for Flight Recorder
- 2 Flight recorder Trigger button
- 3 USB Port

Diagnostic functions

- DTC reading (Diagnostic Trouble Codes)**
Gives access to DTC stored in the selected ECU and associated freeze frame data when available.
- DTC clearing (Diagnostic Trouble Codes)**
Sends a DTC clearing request to the selected ECU.
- Real-Time Data**
Allows dynamic reading of ECU parameters, with the ability to select the parameters to be viewed simultaneously, in either instantaneous or graphical way.
- Adjustments**
Give access to ECU adjustments such as injector coding, adaptation reset, pedal calibration, service reset, actuator relearning etc. Instructions are provided to guide the user in the use of the function.
- Component Activation**
Forces ECU to test its functionality
- ECU Coding**
Allows to configure and code ECU for functions such as Tyre size configuration, key programming, VIN programming etc.)

- Informations (EOBD)**
Displays general information about the vehicle (communication protocol, available control units, number of DTC, MIL Status etc.)
- Freeze Frame Data (EOBD)**
Displays to EOBD Freeze Frame (EOBD function only)
- Oxygen Sensor tests result (EOBD)**
Displays the Oxygen sensor(s) tests result
- Non-continuous tests result (EOBD)**
Displays the EOBD Non-continuous tests result
- Diagnostic check (EOBD)**
Displays the EOBD tests result
- Vehicle information (EOBD)**
Displays vehicle identification numbers - Vehicle Identification Number (VIN) , Calibration Identification Number (CIN) and Calibration Verification Number (CVN)