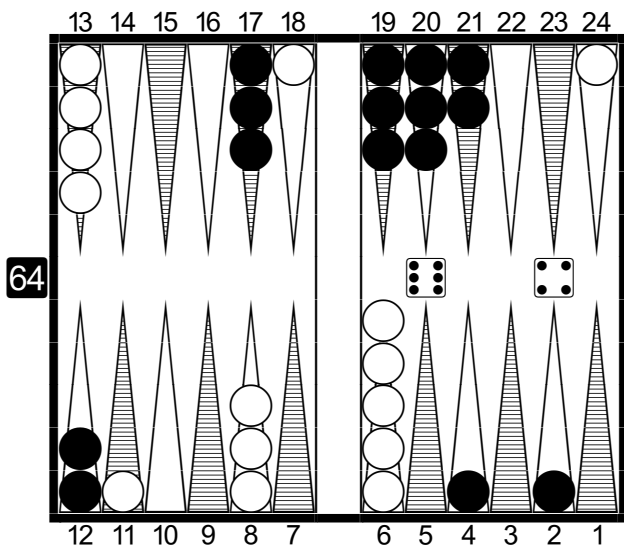


Problem 1

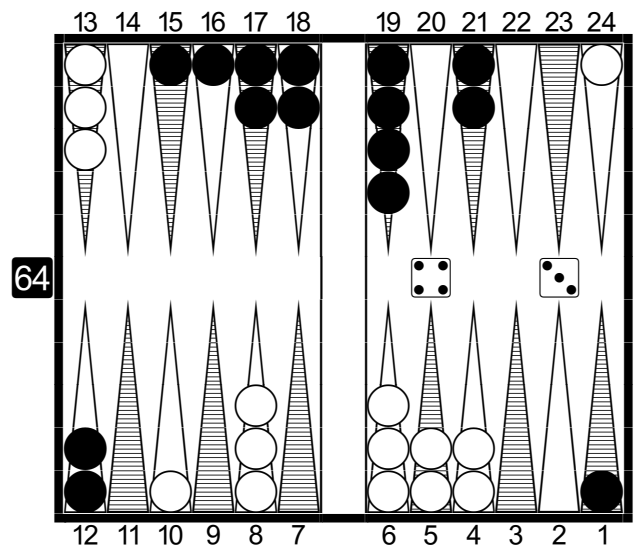
White to move - 64



- a) 18/8
- b) 13/7 11/7
- c) 8/2* 6/2
- d) 24/18 8/4*
- e) 24/18 6/2*

Problem 2

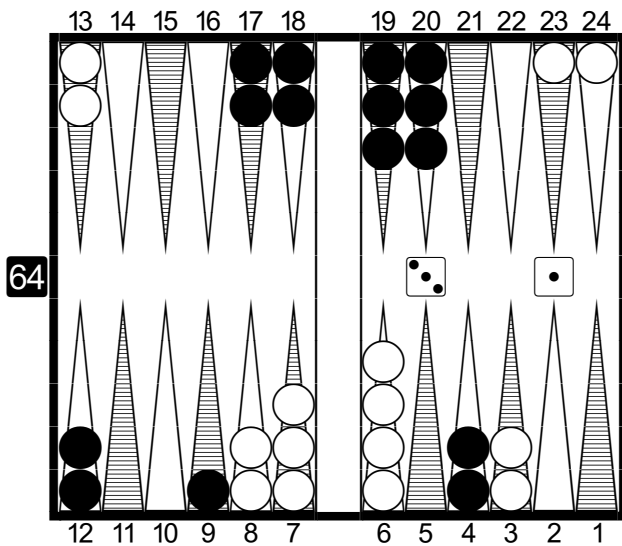
White to move - 43



- a) 24/20 13/10
- b) 13/10 8/4
- c) 13/9 8/5
- d) 8/1*

Problem 3

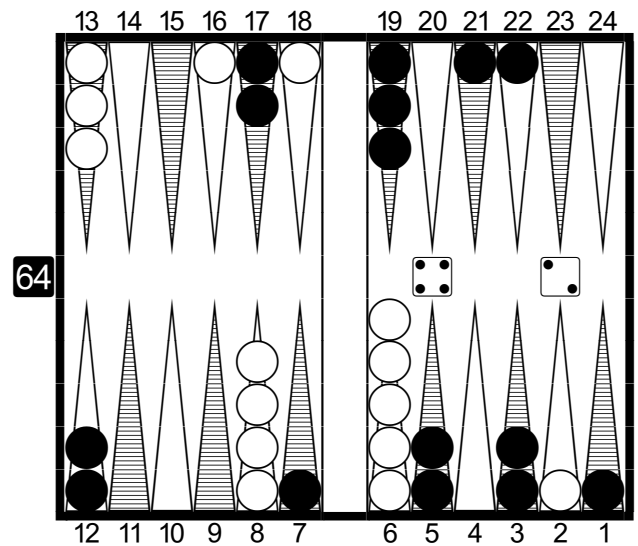
White to move - 31



- a) 24/23 6/3
- b) 23/22 6/3
- c) 24/21 23/22
- d) 8/5 6/5
- e) 13/9*

Problem 4

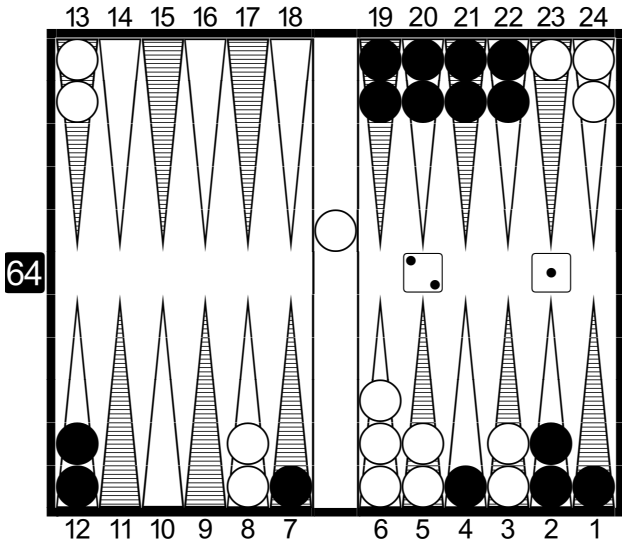
White to move - 42



- a) 18/14 16/14
- b) 18/16 6/2
- c) 8/4 6/4
- d) 13/7*

Problem 5

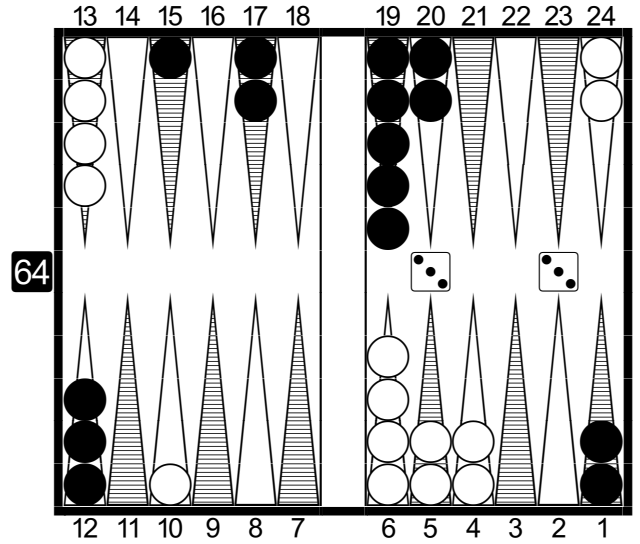
White to move - 21
 (White has 1 checker on the bar)



- a) bar/23 24/23
- b) bar/23 6/5
- c) bar/23 8/7*
- d) bar/24 6/4*

Problem 6

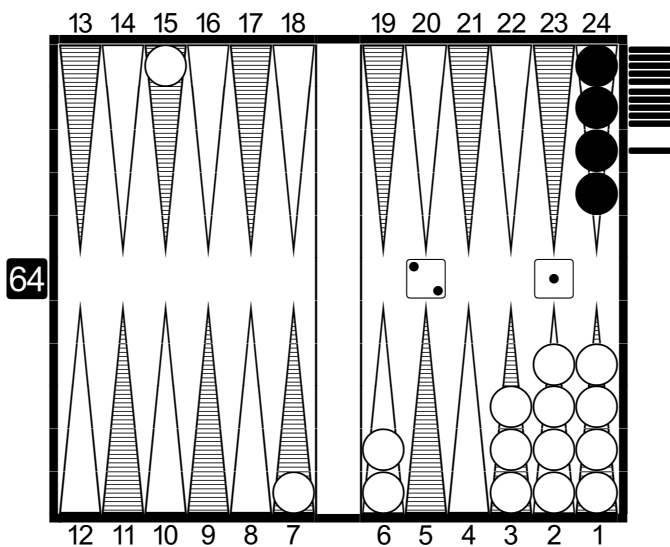
White to move - 33



- a) 24/18(2)
- b) 24/21(2) 6/3(2)
- c) 24/15* 13/10
- d) 24/21 13/7 10/7
- e) 13/7(2)

Problem 7

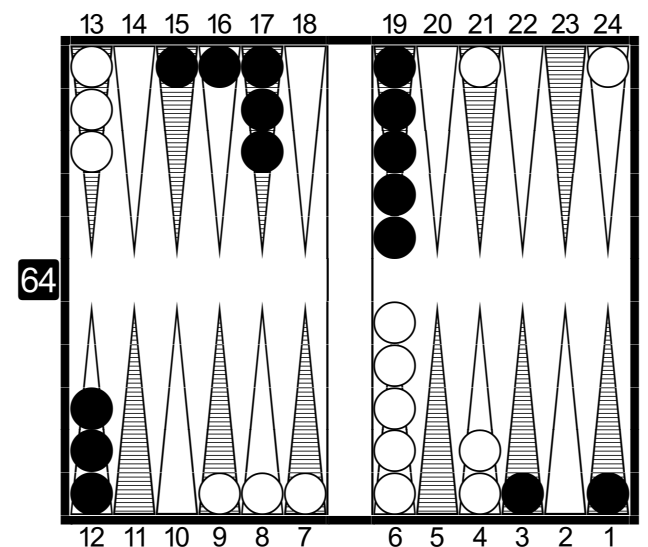
White to move - 21



- a) 15/13 7/6
- b) 15/14 7/5
- c) 15/12
- d) 7/4

Problem 8

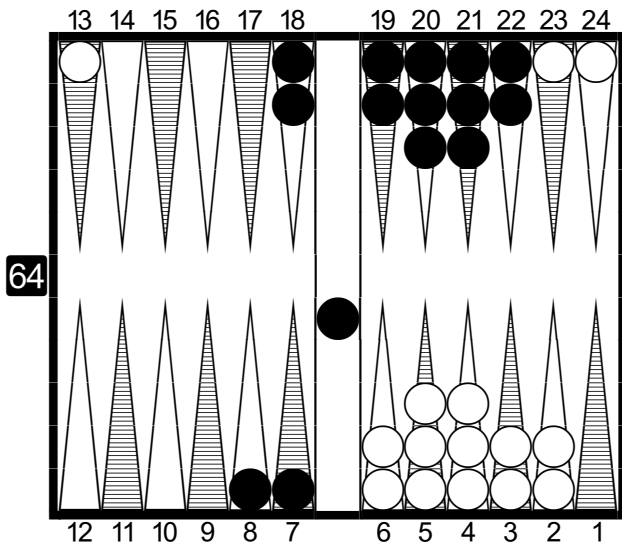
White on roll - cube action?



- a) No double / Take
- b) Double / Take
- c) Double / Pass
- d) Too good to double / Pass

Problem 9

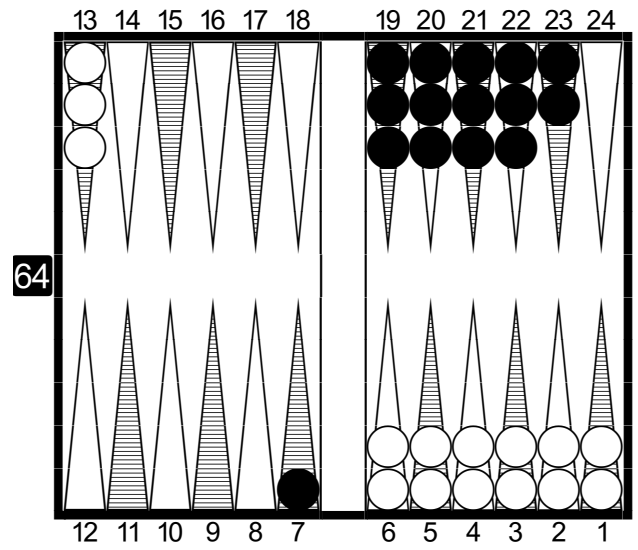
White on roll - cube action?
 (Black has 1 checker on the bar)



- a) No double / Take
- b) Double / Take
- c) Double / Pass
- d) Too good to double / Pass

Problem 10

White on roll - cube action?



- a) No double / Take
- b) Double / Take
- c) Double / Pass
- d) Too good to double / Pass

THANKS FOR YOUR PARTICIPATION!

