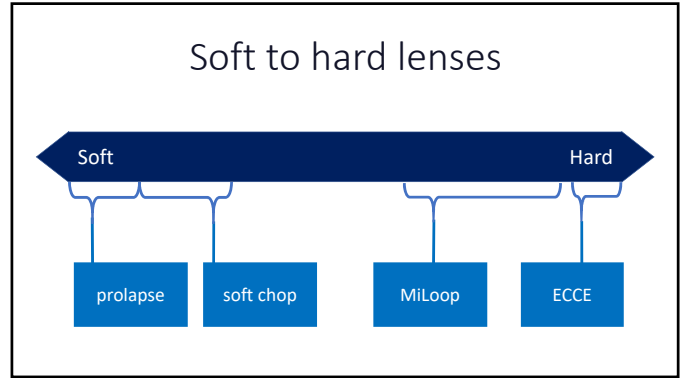
  
**UNIVERSITY of IOWA**  
HEALTH CARE  
*Department of Ophthalmology  
and Visual Sciences*

# Soft to hard lenses

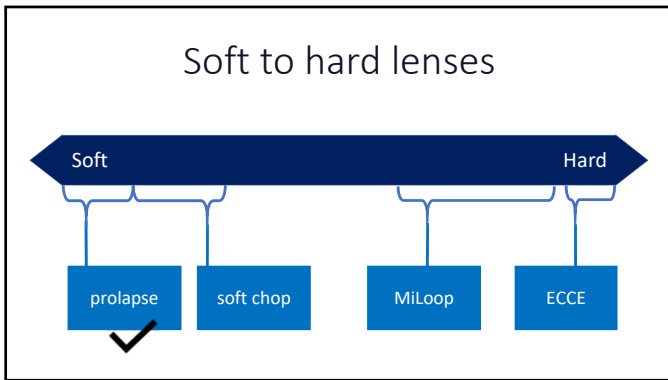
Thomas A Oetting  
University of Iowa

No Financial Issues to Disclose

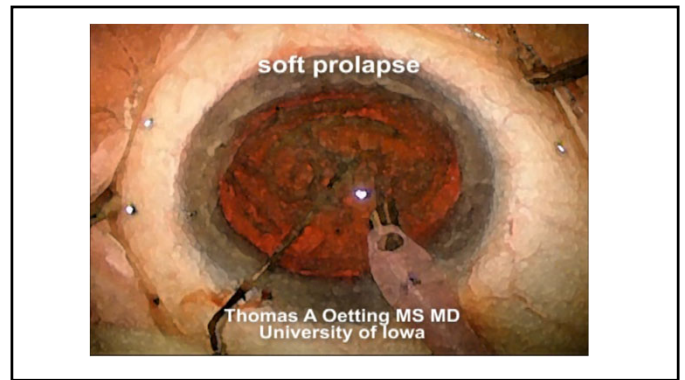
1



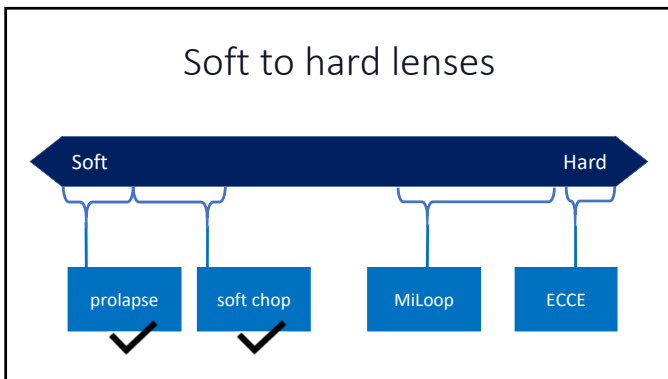
2



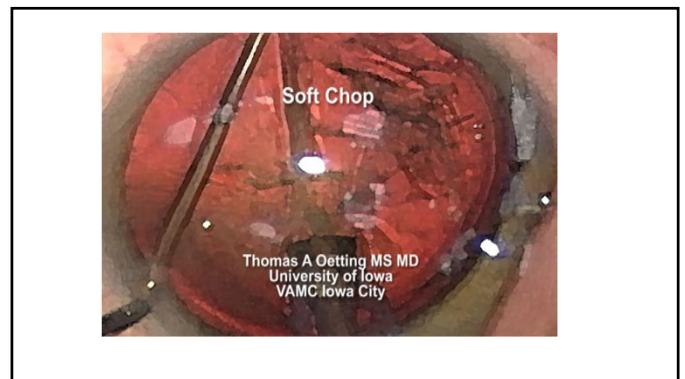
3



4



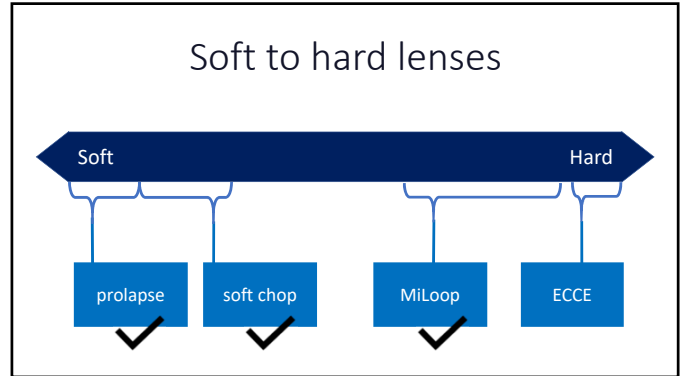
5



6



7



8

### the miLOOP™

- Initial fragmentation without phaco energy
- Break into 2-6 pieces
- Remove pieces with phaco or manually
- Minimal capsular stress

9

### the miLOOP™

- Initial fragmentation without phaco energy
- Break into 2-6 pieces
- Remove pieces with phaco or manually
- Minimal capsular stress

10

### Nitinol Technology

- Nickel-Titanium alloy
  - Elasticity
  - Shape-memory
  - Extreme tensile strength

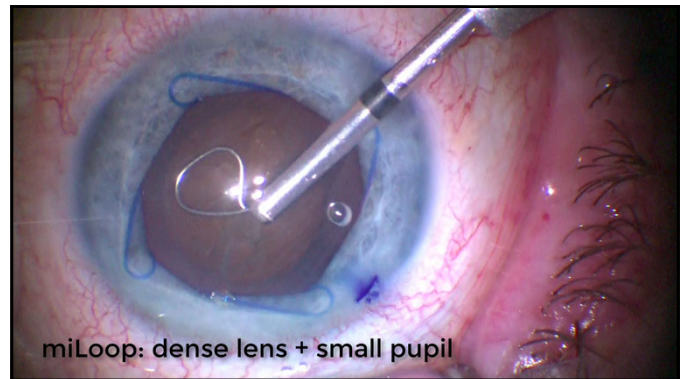
11



12

Practice the wrist motion  
Mind the rhexis edge (stain)  
Second instrument ready

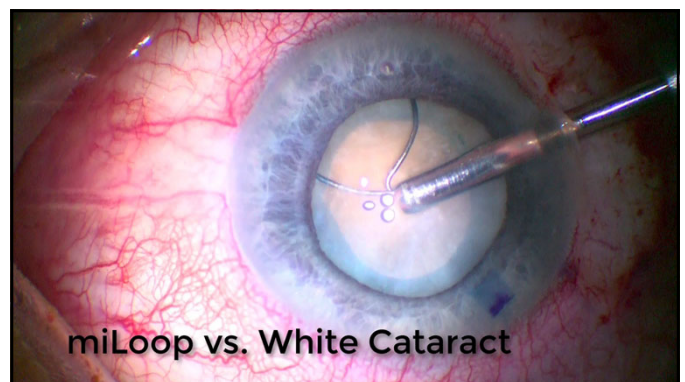
13



14

OK with Malyugin ring (7 mm)  
Don't over spin  
OVD improves view 2<sup>nd</sup> pass

15



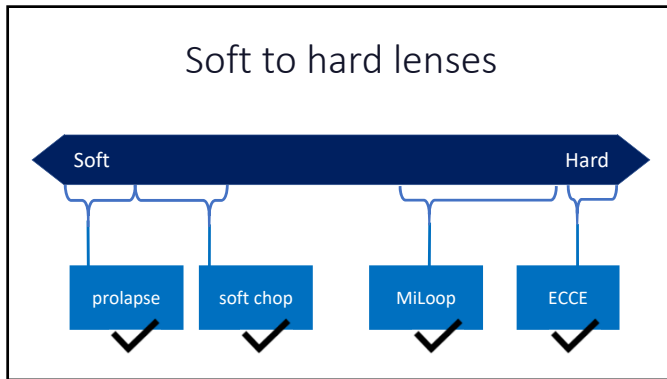
16

May not see posterior loop  
Tactile feedback present  
Can prolapse pieces into AC

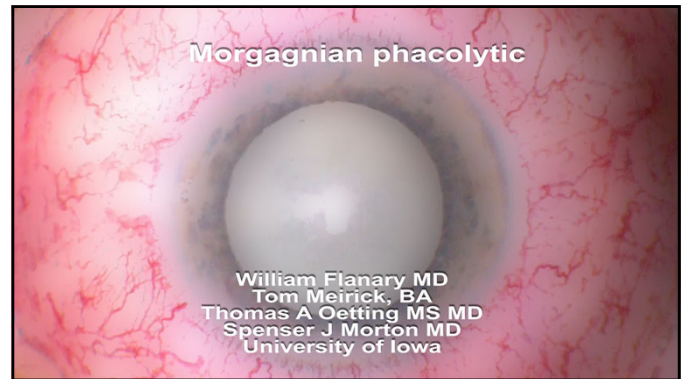
17



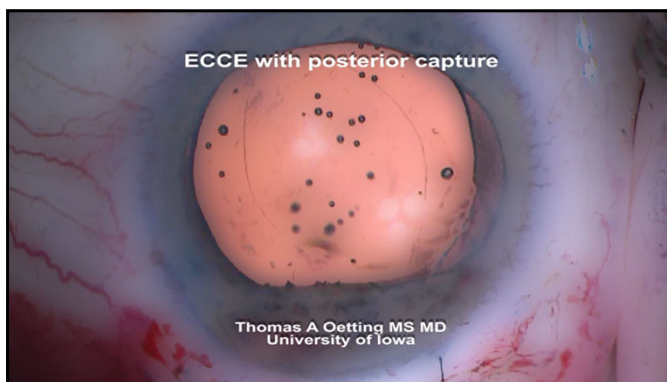
18



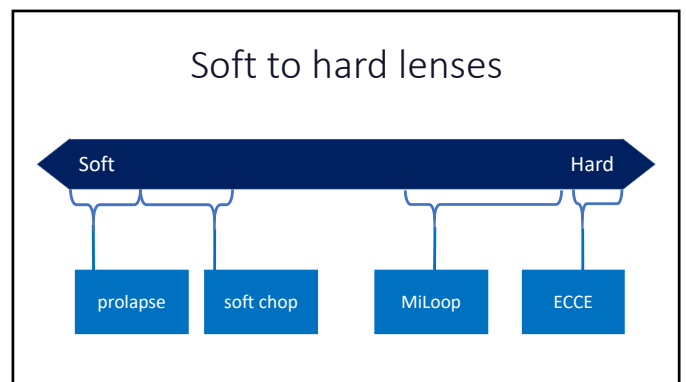
19



20



21



22

Summary

- Prolapse
- Soft Chop
- MiLoop Useful Engine
  - Fuchs' Dystrophy
  - Dense lens
  - Smaller incision ECCE
- Still a Role for ECCE

23