

# Service Information

Mazda Motor Corporation

3-1, Shinchi, Fuchu-cho, Aki-gun  
Hiroshima 730-8670, Japan  
TEL : 81(82)287-5323  
FAX : 81(82)287-5220



Category <b>S</b>	<b>Repair Guidance</b>	Ref. No. R017/16A	Page 1 of 6
Coverage Distributor only Please inform your dealers		Date Issued February 26, 2016	
Please convey this information to your Director General Manager Warranty Dept. Parts Dept. Training Dept. Field Rep.		Date Revised <b>March 29, 2016</b>	
Applicable Model  MX-5 (ND) with INNER CLOTH		Applicable Countries or Specifications  Worldwide	

**REVISED**

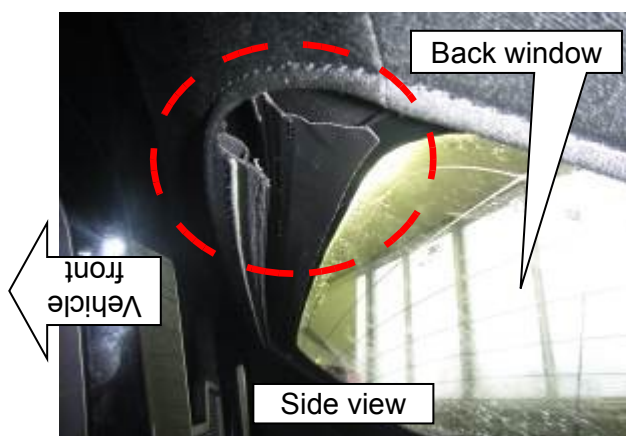
**Revision note: "Beginning VIN" has been updated.**

## Subject: Convertible Top-Inner Cloth coming off causing Poor Appearance and Obstructing view of Back Window

### DESCRIPTION

Some vehicles may exhibit a coming off of the inner cloth at the rear end causing poor appearance and obstructing view of the back window.

The coming off occurs when the convertible top is opening and/or closing or by vibration during vehicle driving.



### CAUSE

The J-hook binding to hold the inner cloth becomes loose during opening/closing the convertible top or by heat influence.

## MASS PRODUCTION CHANGE

Two top-protectors (clip) have been additionally installed to the both side edges of the J-hook to prevent opening/loosening of the J-hook.

## BEGINNING VIN & DATE OF MODIFICATION

### **MX-5 (ND)**

Spec.	Beginning VIN		Date of Modification
ADR	JM0 ND **** **	101477	January 19, 2016
General (R.H.D.)	JM6 ND **** **	100264	
General (L.H.D.)	JM7 ND **** **	100394	
Europe	JMZ ND **** **	111273	
US (2016 MY)	JM1 ND **** **	110159	

## REPAIR PROCEDURE

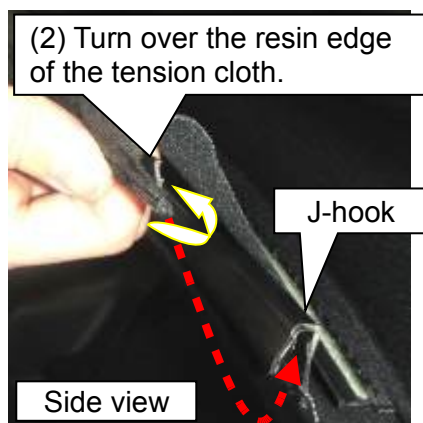
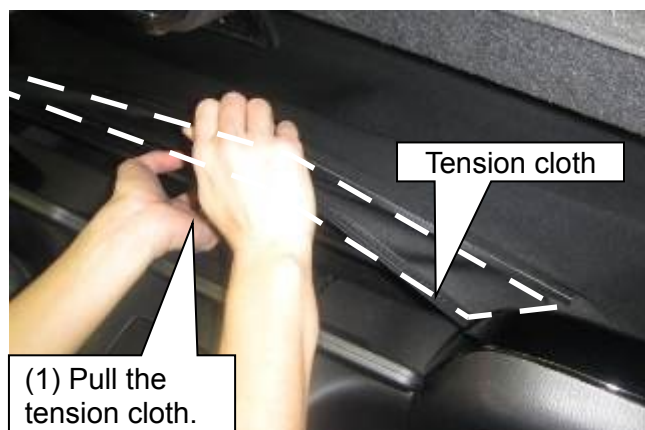
If you receive a customer complaint on this concern, use the following repair procedure.

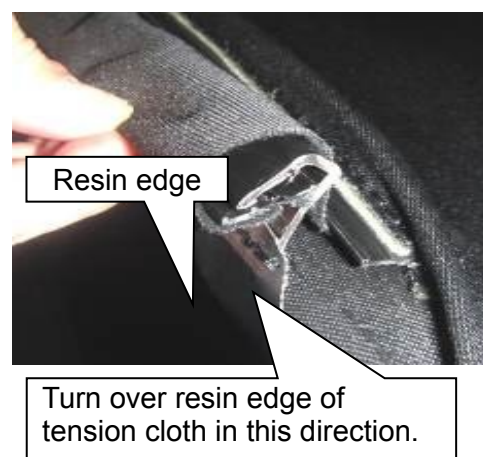
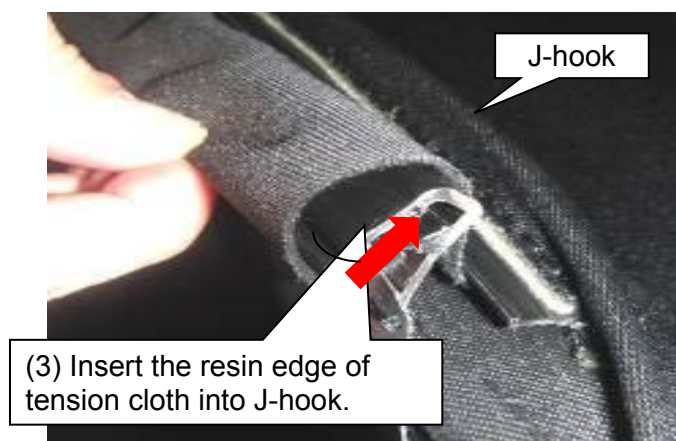
### 1. **Install the inner cloth.**

1). Open the soft top to the position shown in the following picture.

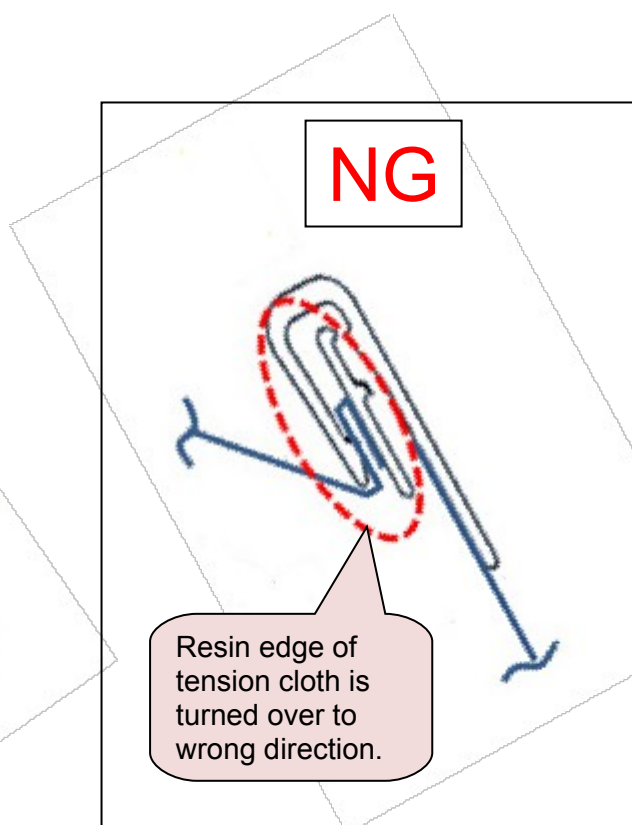
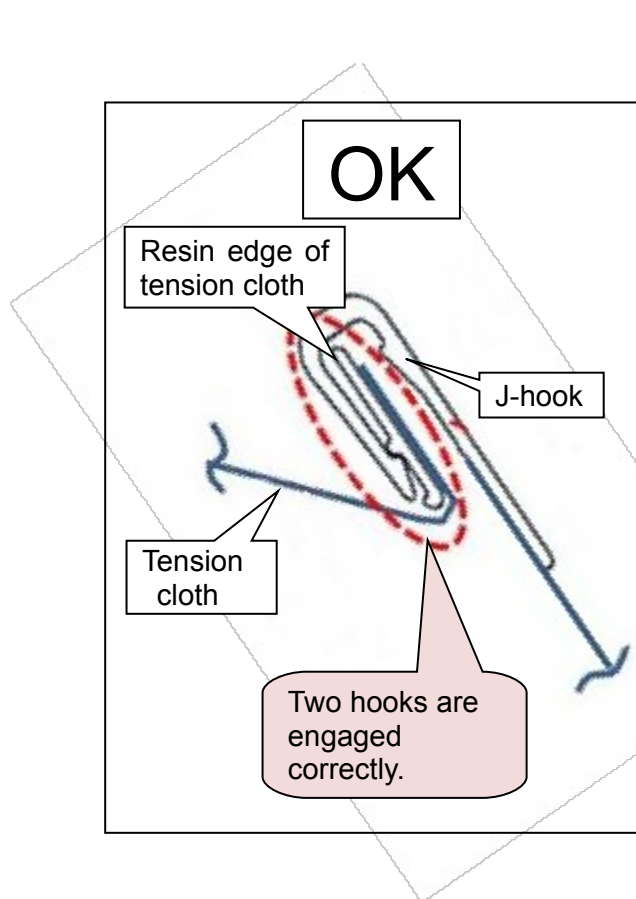


2). Install the resin edge of the tension cloth into the J-hook.

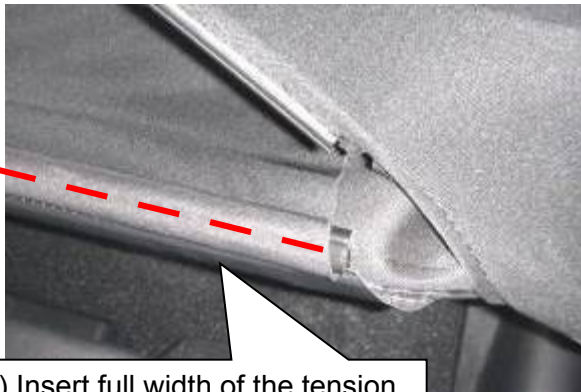




**NOTE:** Make sure to turn over the resin edge of the tension cloth to the correct direction as shown.



### Cross section

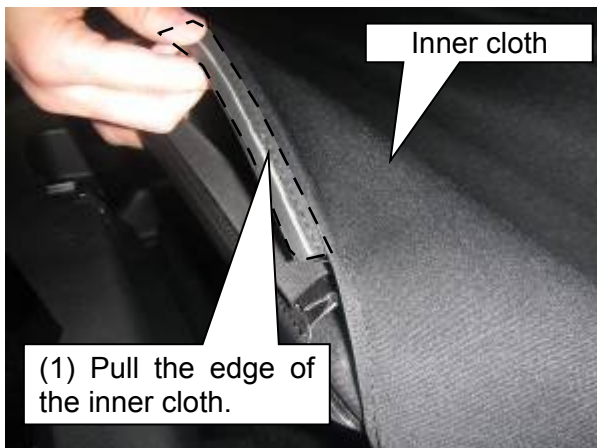


(4) Insert full width of the tension cloth edge into the J-hook.

J-

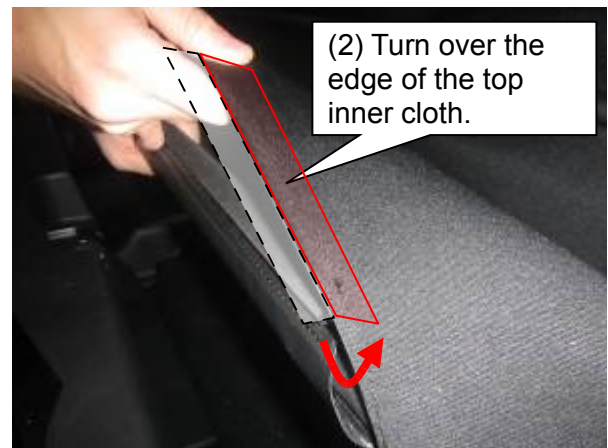
hook.

3). Install the edge of the inner cloth into the

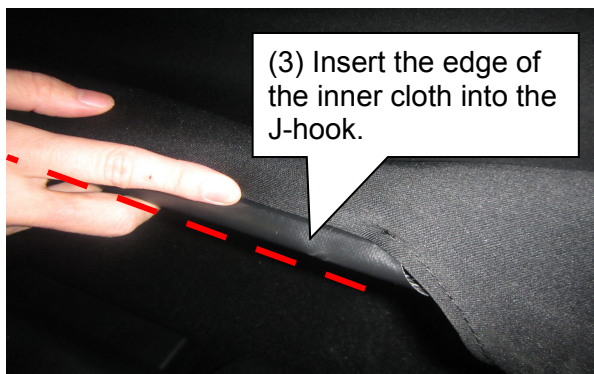


(1) Pull the edge of the inner cloth.

Inner cloth



(2) Turn over the edge of the top inner cloth.



(3) Insert the edge of the inner cloth into the J-hook.

ension cloth

ar Joint Plate

Outer Cloth

J Hook

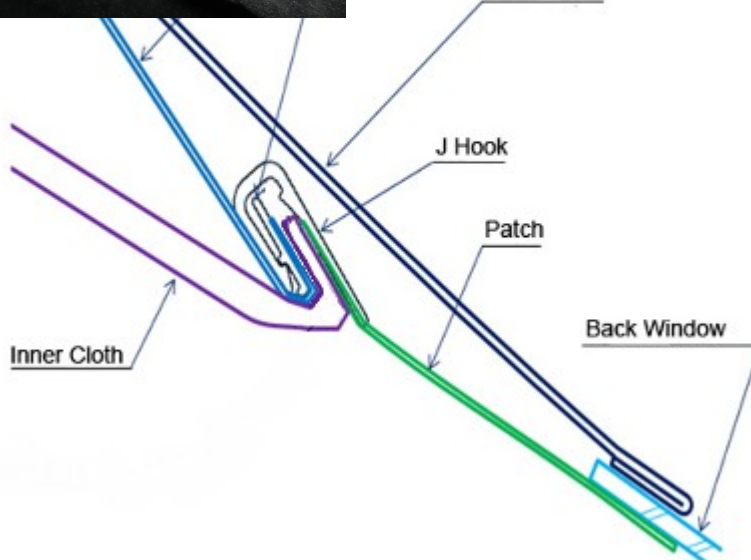
Patch

Back Window

Inner Cloth

-Cross  
Tension  
Inner  
how they  
in J-Hook-

view of  
Cloth and  
cloth to show  
are installed



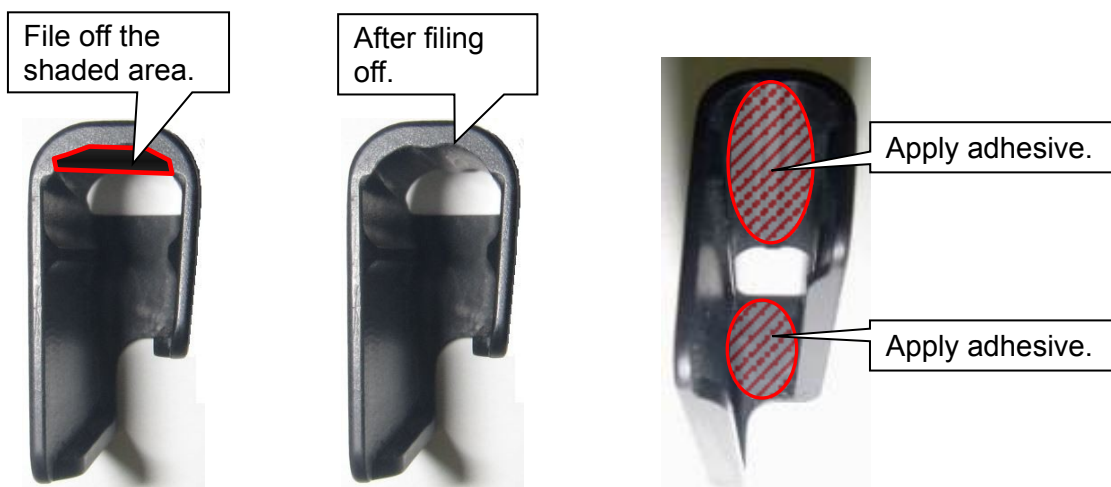


4). Lightly pull the inner cloth and verify that the inner cloth does not come off easily.

**2. Install the top-protectors onto both edges of the J-hook.**

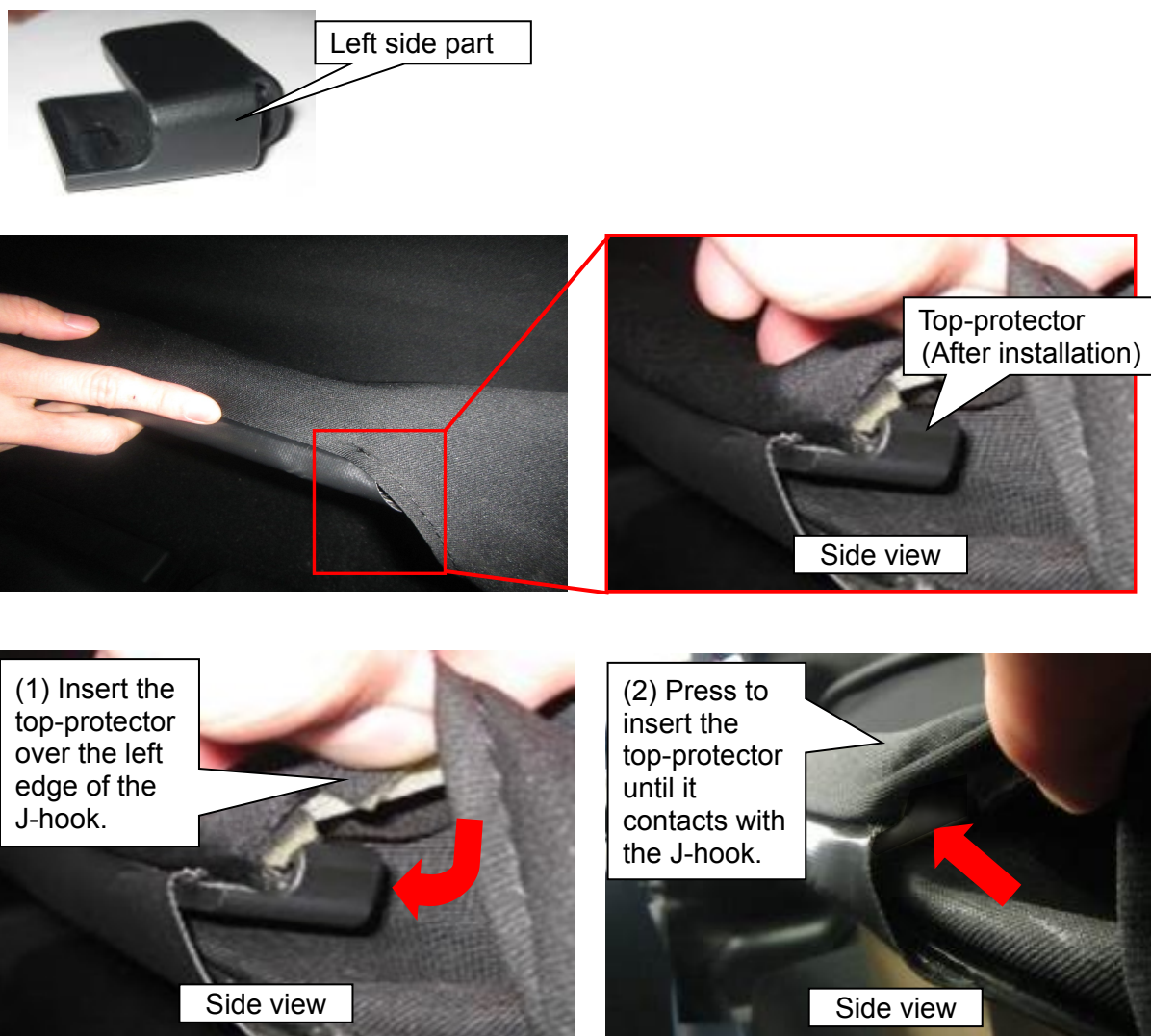
- 1) File off the shaded area of the top-protector (for both left and right sides).  
Apply an appropriate adhesive to the inside of the top-protector as shown in the illustration.

**NOTE:** Pictures show the left side.



- 2) Install the top-protectors (see Parts Information) to both edges of the J-hook.

**NOTE:** Pictures show the left side.



3) Verify the repair.

#### PARTS INFORMATION

Part Number	Part Name	Q'ty	Remark
N247-R1-280	PROTECTOR-TOP,LH	1	LH
N247-R1-230	PROTECTOR-TOP,RH	1	RH

#### WARRANTY INFORMATION

Assembly group	S - Body
Subassembly group	21 - SOFT TOP
Symptom Code	88
Damage Code	9E
Causal Part No.	N243 R1 210
Q'ty	0
Operation No. and hours	XXM2KXRX, 0.4 hours
Period Covered	Normal Warranty Period
Prior Approval necessary	NO

**NOTE:** Claim "Protector-Top. LH & RH" (N247-R1-280 Q'ty=1; N247-R1-230 Q'ty=1) as related parts.

Ryu Shimizugawa  
Manager, Technical Information Gr.  
Technical Service Dept.  
Mazda Motor Corporation  
1F80631648 (MC Internal Use)