



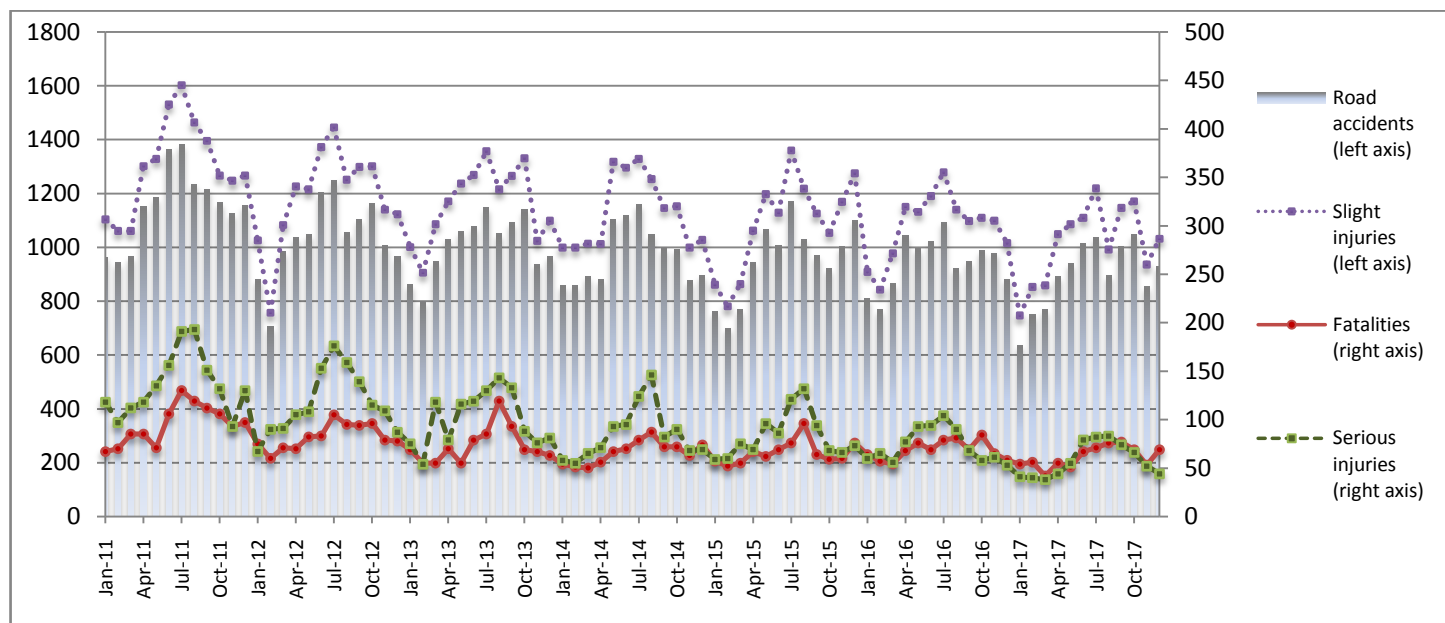
PRESS RELEASE

ROAD ACCIDENTS: December 2017

The Hellenic Statistical Authority (ELSTAT) announces provisional¹ data on Road Accidents for December 2017. In particular, the road traffic accidents which occurred in Greece, resulting in death or injury, increased by 5.4% in comparison with the corresponding month of 2016 (930 road accidents in December 2017, against 882 road accidents in December 2016).

The casualties of the injury-causing accidents that occurred in December 2017 were as follows: 69 deaths, 44 serious injuries and 1,032 slight injuries. In contrast, in December 2016 the corresponding figures were: 58 deaths, 53 serious injuries and 1,016 slight injuries. Therefore, road accident casualties in December 2017 increased by 19.0% for deaths, decreased by 17.0% for serious injuries and increased by 1.6% for slight injuries.

**Graph 1: Road traffic accidents and casualties,
January 2011 - December 2017**



Provisional data: Mar 17 –Dec 17

Information:

Social Statistics Division

Justice and Public Order Statistics Section

D. Athanasopoulou

Tel: +30 213 1352767

Fax : +30 213 1352764

e-mail: d.athanasopoulou@statistics.gr

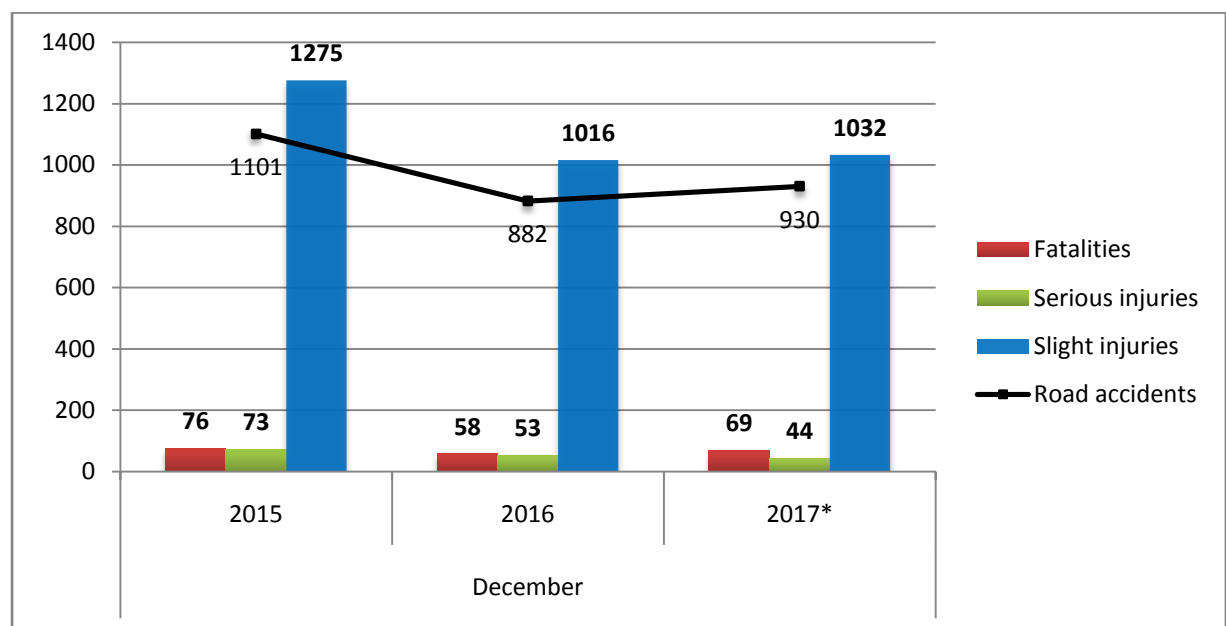
¹ Data for the reference year are provisional until the finalisation of the annual data, which become final 10 months after the end of the reference year. During these 10 months the provisional data are updated on the basis of the data of the Road Accident Forms which are transmitted to ELSTAT by Police Authorities.

Table 1: Road traffic accidents and casualties, December 2015-2017*

	December				
	2015	2016	2016/2015 (%)	2017*	2017*/2016 (%)
Road accidents	1,101	882	-19.9%	930	5.4%
Fatalities	76	58	-23.7%	69	19.0%
Total injuries	1,348	1,069	-20.7%	1,076	0.7%
Serious injuries	73	53	-27.4%	44	-17.0%
Slight injuries	1,275	1,016	-20.3%	1,032	1.6%

* Provisional data

Graph 2: Road traffic accidents and casualties, December 2015-2017*



* Provisional data

Table 2: Road traffic accidents and casualties, by region and department, December 2016 – 2017*

Region and Department	Road accidents			Fatalities			Serious injuries			Slight injuries		
	2016	2017*	%	2016	2017*	%	2016	2017*	%	2016	2017*	%
Greece Total	882	930	5.4%	58	69	19.0%	53	44	-17.0%	1,016	1,032	1.6%
Anatoliki Macedonia, Thraki (East Macedonia and Thrace)	25	25	0.0%	5	1	-80.0%	4	1	-75.0%	23	29	26.1%
Drama	6	5	-16.7%	2	0		0	0		6	6	
Evros	5	5	0.0%	1	0		1	0		3	5	
Kavala	9	6	-33.3%	2	0		2	1		7	5	
Xanthi	1	2	100.0%	0	0		0	0		1	4	
Rodopi	4	7	75.0%	0	1		1	0		6	9	
Kentriki Macedonia (Central Macedonia)	211	181	-14.2%	11	15	36.4%	6	6	0.0%	251	205	-18.3%
Imathia	5	5	0.0%	0	2		2	0		4	8	
Thessaloniki	179	155	-13.4%	7	11		3	0		220	174	
Kilkis	4	8	100.0%	0	0		0	5		5	9	
Pella	9	3	-66.7%	2	1		0	0		10	2	
Pieria	1	2	100.0%	1	1		0	1		0	0	
Serres	6	4	-33.3%	1	0		0	0		5	8	
Chalkidiki	7	4	-42.9%	0	0		1	0		7	4	
Dytiki Macedonia (West Macedonia)	10	8	-20.0%	1	1	0.0%	1	2	100.0%	12	6	-50.0%
Grevena	0	0	-	0	0		0	0		0	0	
Kastoria	5	1	-80.0%	1	0		0	0		7	1	
Kozani	5	6	20.0%	0	1		1	0		5	5	
Florina	0	1	-	0	0		0	2		0	0	
Ipeiros (Epirus)	8	10	25.0%	1	2	100.0%	4	0	-100.0%	6	12	100.0%
Arta	1	1	0.0%	0	1		1	0		1	1	
Thesprotia	3	5	66.7%	0	1		0	0		3	4	
Ioannina	3	3	0.0%	1	0		2	0		1	5	
Preveza	1	1	0.0%	0	0		1	0		1	2	
Thessalia (Thessaly)	17	21	23.5%	0	5	-	4	4	0.0%	17	19	11.8%
Karditsa	6	9	50.0%	0	1		1	1		8	11	
Larissa	8	7	-12.5%	0	1		2	2		6	5	
Magnissia	1	3	200.0%	0	2		0	1		1	0	
Trikala	2	2	0.0%	0	1		1	0		2	3	
Ionioi Nisoi (Ionian Islands)	9	3	-66.7%	2	1	-50.0%	1	0	-100.0%	6	2	-66.7%
Zakynthos	0	0	-	0	0		0	0		0	0	
Kerkyra	4	0	-100.0%	1	0		1	0		2	0	
Kefallinia	2	0	-100.0%	1	0		0	0		1	0	
Lefkada	3	3	0.0%	0	1		0	0		3	2	

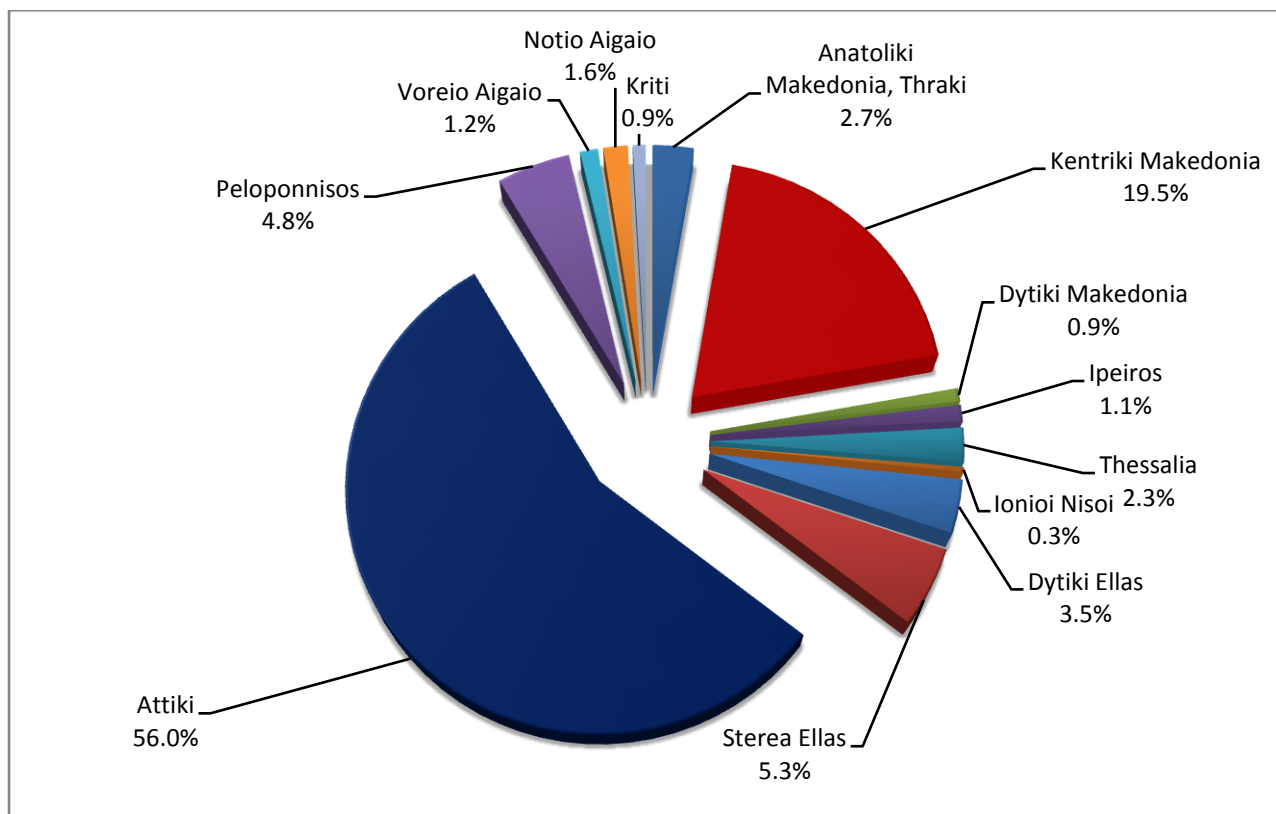
* Provisional data

Table 2: Road traffic accidents and casualties, by region and department, December 2016 – 2017* (Continued)

Region and Department	Road accidents			Fatalities			Serious injuries			Slight injuries		
	2016	2017*	%	2016	2017*	%	2016	2017*	%	2016	2017*	%
Dytiki Ellas (West Greece)	43	33	-23.3%	4	3	-25.0%	4	5	25.0%	45	32	-28.9%
Etolia & Akarnania	14	15	7.1%	1	2		0	4		16	15	
Achaia	24	13	-45.8%	2	1		2	1		25	12	
Ilia	5	5	0.0%	1	0		2	0		4	5	
Stereia Ellas	34	49	44.1%	2	5	150.0%	6	5	-16.7%	38	63	65.8%
Viotia	7	10	42.9%	1	0		1	0		10	14	
Evia	17	18	5.9%	0	1		4	2		17	28	
Evrytania	0	2	-	0	0		0	1		0	1	
Fthiotida	4	16	300.0%	1	2		0	2		6	17	
Fokida	6	3	-50.0%	0	2		1	0		5	3	
Attiki (Attica)	443	521	17.6%	15	18	20.0%	13	13	0.0%	532	571	7.3%
Peloponnisos (Peloponnese)	46	45	-2.2%	8	9	12.5%	5	4	-20.0%	48	56	16.7%
Argolida	6	4	-33.3%	1	0		2	0		4	8	
Arkadia	6	8	33.3%	1	2		0	1		9	9	
Korinthia	18	14	-22.2%	3	2		1	1		15	12	
Lakonia	6	6	0.0%	0	1		1	0		7	7	
Messinia	10	13	30.0%	3	4		1	2		13	20	
Voreio Aigaio (North Aegean)	15	11	-26.7%	3	0	-100.0%	1	1	0.0%	17	11	-35.3%
Lesvos	8	1	-87.5%	3	0		1	0		8	2	
Samos	4	6	50.0%	0	0		0	0		5	6	
Chios	3	4	33.3%	0	0		0	1		4	3	
Notio Aigaio (South Aegean)	9	15	66.7%	1	5	400.0%	4	3	-25.0%	9	16	77.8%
Dodekanissos	3	8	166.7%	0	2		1	1		5	8	
Kyklades	6	7	16.7%	1	3		3	2		4	8	
Kriti (Crete)	12	8	-33.3%	5	4	-20.0%	0	0	-	12	10	-16.7%
Iraklio	5	5	0.0%	3	1		0	0		6	9	
Lassithi	4	1	-75.0%	1	1		0	0		3	0	
Rethymno	1	1	0.0%	0	1		0	0		1	1	
Chania	2	1	-50.0%	1	1		0	0		2	0	

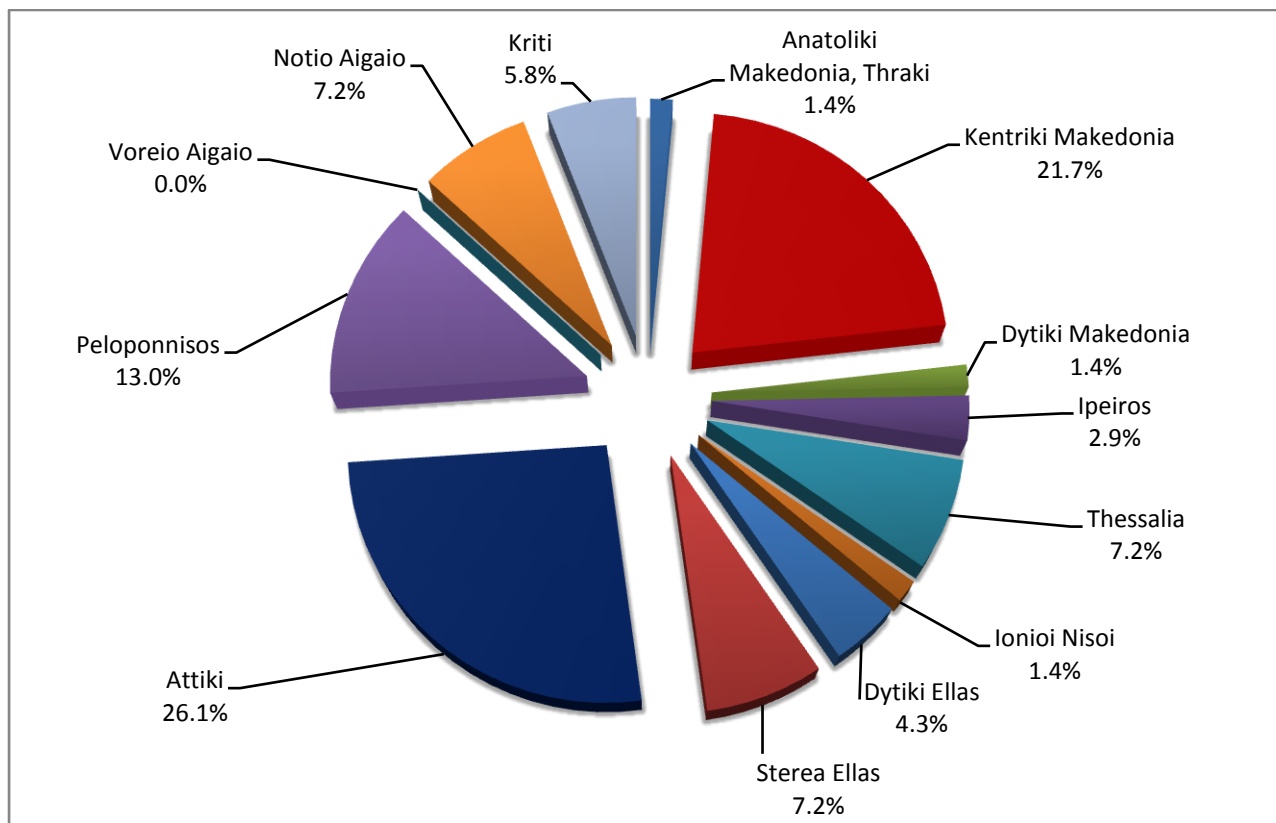
* Provisional data

**Graph 3: Road traffic accidents by region,
December 2017 ***



* Provisional data

**Graph 4: Fatalities by region,
December 2017 ***



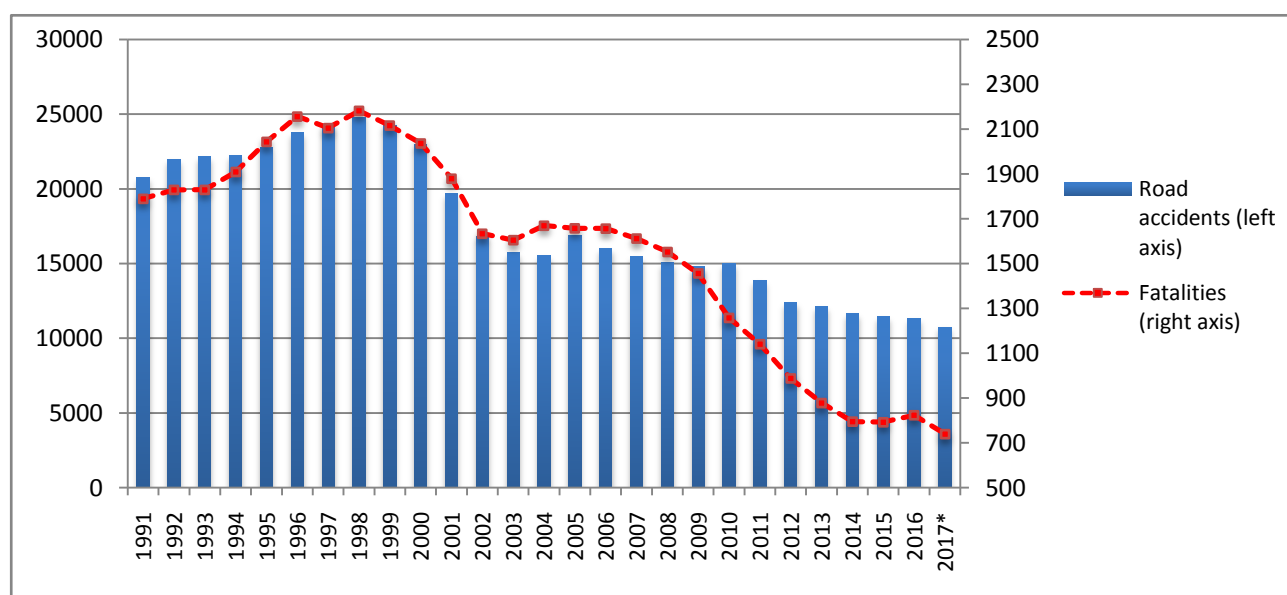
* Provisional data

Table 3: Road Traffic Accidents and casualties for the period January - December 2015, 2016 and 2017*

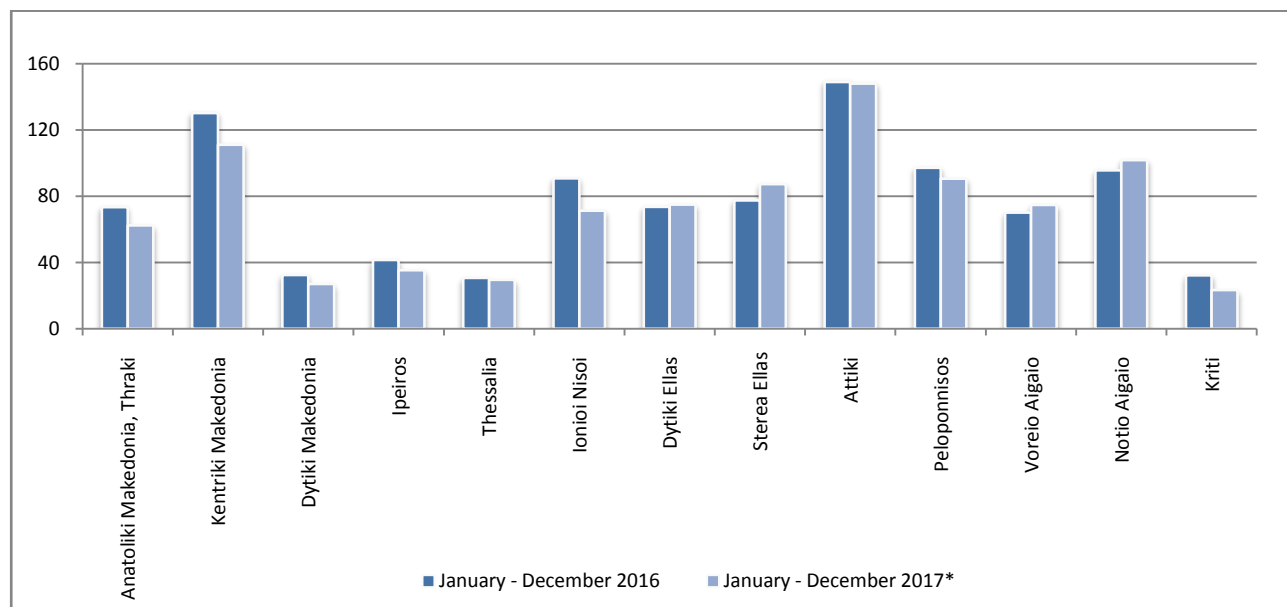
	2015	2016	2017*
	January - December	January - December	January - December
Road Accidents	11,440	11,318	10,768
Annual Change (%) :		-1.1%	-4.9%
Fatalities	793	824	740
Annual Change (%) :		3.9%	-10.2%
Serious injuries	999	879	698
Annual Change (%) :		-12.0%	-20.6%
Slight injuries	13,097	12,946	12,201
Annual Change (%) :		-1.2%	-5.8%

* Provisional data

Graph 5: Total Road traffic accidents and fatalities, 1991-2017

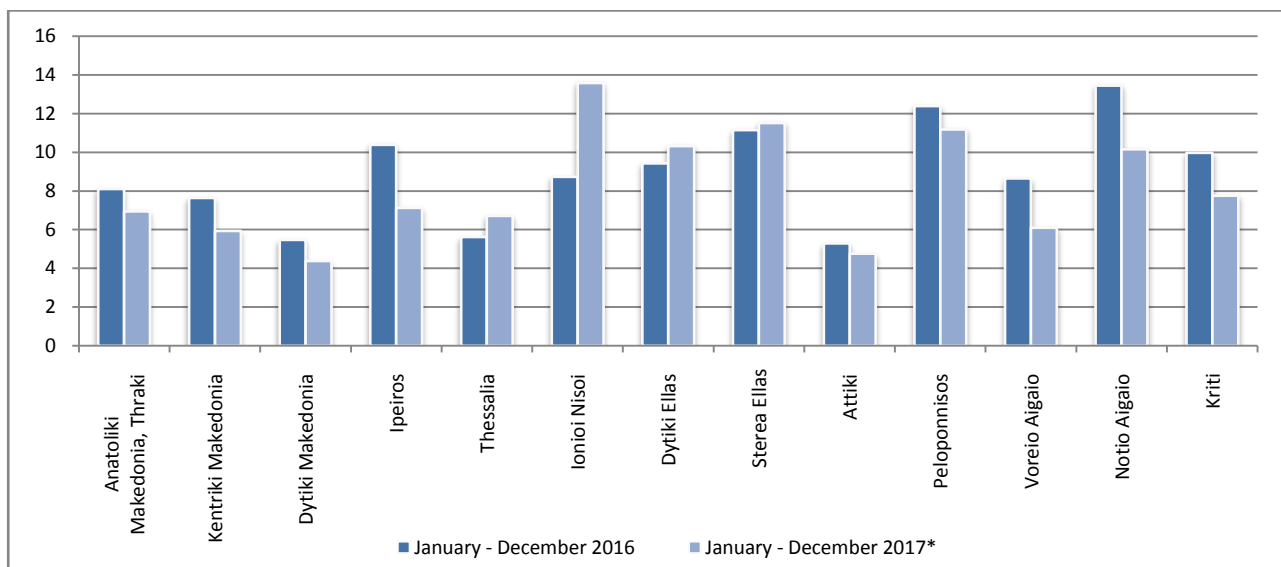


Graph 6: Road accidents per 100,000 inhabitants

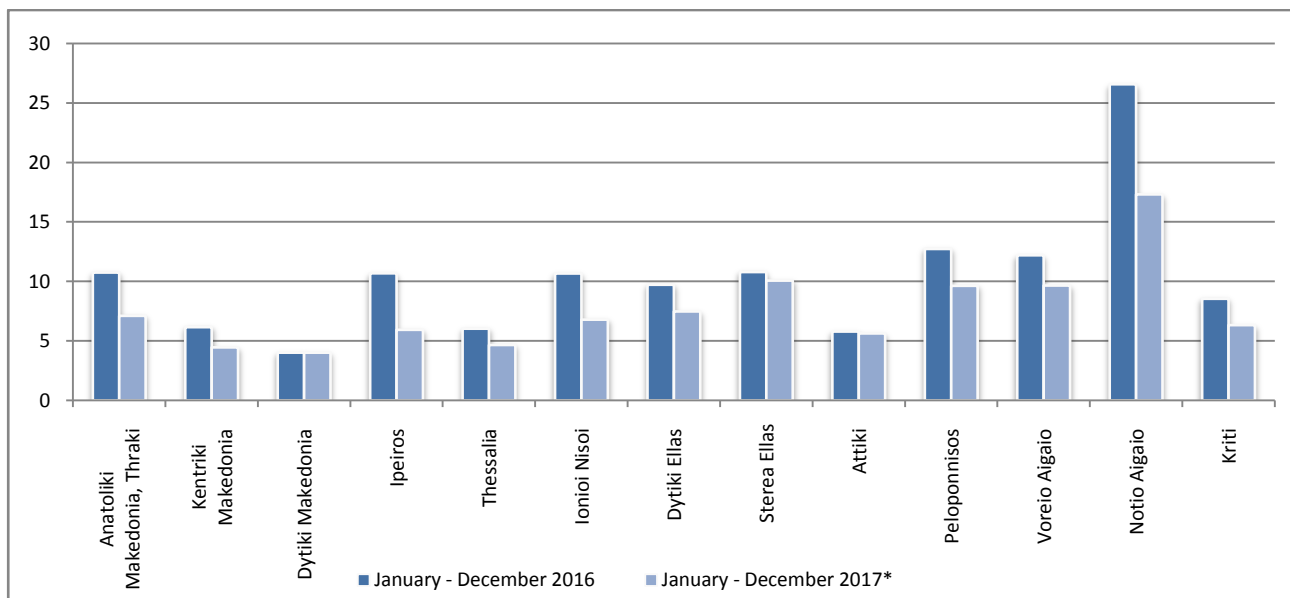


* Provisional data

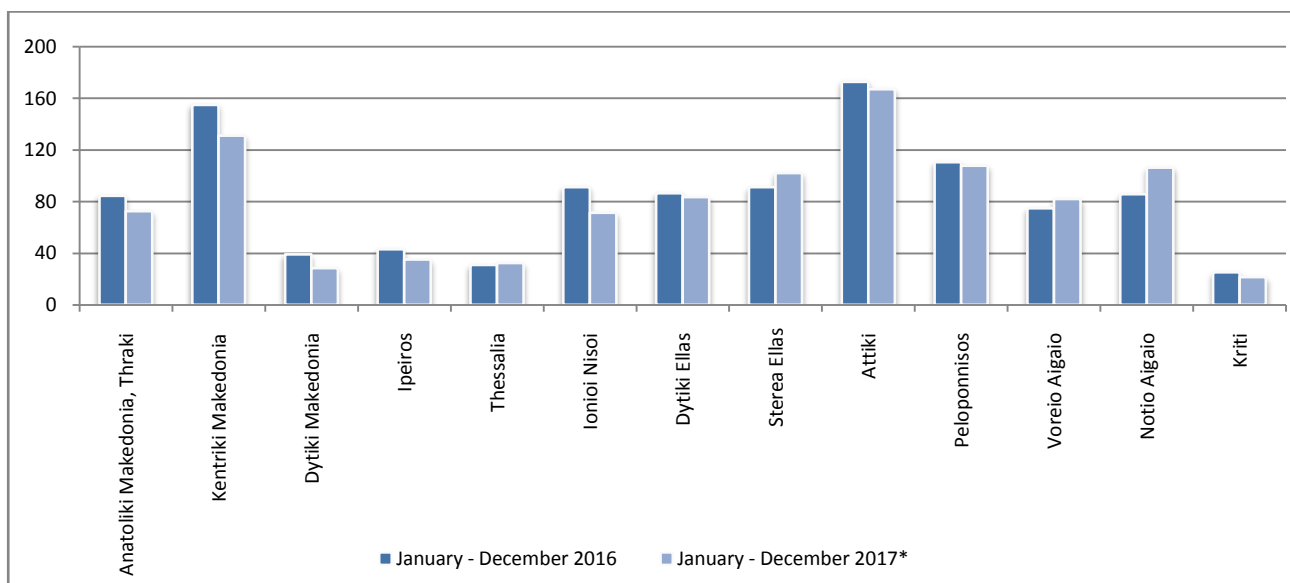
Graph 7: Fatalities per 100,000 inhabitants



Graph 8: Serious injuries per 100,000 inhabitants



Graph 9: Slight injuries per 100,000 inhabitants



* Provisional data

Explanatory Notes

Survey on Road Accidents	<p>The survey on road accidents is conducted on a monthly basis and it records, for each department of Greece and for each month separately, the number of accidents resulting in death or injury, as well as the number of persons injured by categories (drivers, passengers, pedestrians).</p> <p>On a yearly basis, road accidents are further analyzed. The competent agencies for filling in/collecting the forms on road accidents are the local Police Authorities and the local Port Authorities of Greece.</p> <p>The lower level of analysis for the place where an injury road accident occurred is the Municipal – Local Commune, which is described by a 8-digit geographic code. Data are collected on a monthly basis. The main variables are the following: place of accident, kind of road, casualties, conditions of road surface and type of road.</p>
Legal basis	<p>The Survey on Road Traffic Accidents is governed by Council Decision 93/704 of the European Community.</p>
Reference Period	<p>Monthly.</p>
Availability of Data	<p>Provisional data are available 2 months after the reference month.</p> <p>Final data are available 10 months after the reference year.</p>
National Definitions	<p>Road accident (injury accident): Any accident involving at least one road motor vehicle in motion on a public road or square to which the public has access (excluding yards, industrial sites or vehicle depot of public transport enterprises), resulting in at least one injured or killed person. Accidents with only material damages are not included.</p> <p>Fatality (Death): Any person killed immediately or dying within 30 days as a result of an injury accident (This national definition applies since 01.01.1996)</p> <p>Person injured: Any person who sustained an injury as result of an injury accident, and who normally needs medical treatment.</p> <p>Serious injury: Any person who sustained an injury as result of an injury accident, such as brain damages, mutilation, multiple injuries, which may result in lack of awareness or which are life-threatening.</p> <p>Slight injury: Any person injured who sustained minor and not life-threatening injuries.</p> <p>Vehicle: Include motor vehicles, trolleybuses, motorcycles, bicycles, motorbikes, agricultural and road making machines, animal and hand-drawn vehicles. Railway vehicles are excluded, unless the road accident involves at least one of the aforementioned types of vehicles and therefore, railway vehicles are considered vehicles.</p>
Methodology	<p>The forms of the survey are filled in by the local Police Authorities and the local Port Authorities as well.</p>
References	<p>More information about road accidents is available on ELSTAT's website and more specifically at the link: www.statistics.gr > Population & Social Conditions > Accidents > Road Traffic Accidents.</p> <p>It should be noted that previous press releases and time series are available on ELSTAT's website: www.statistics.gr</p>