

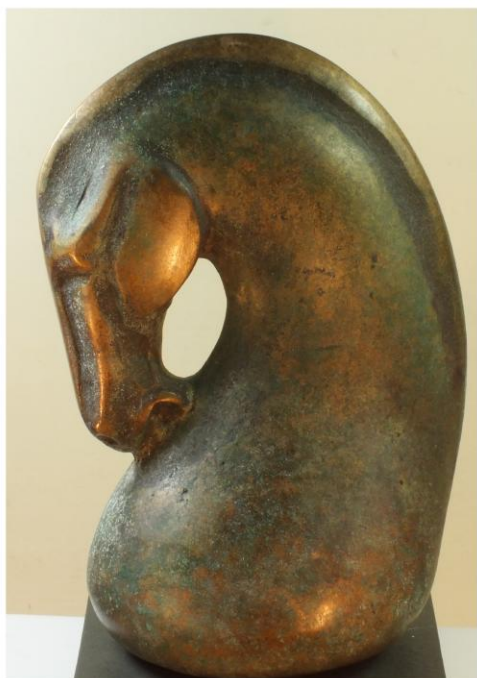
Perryn Butler

Sculptor

www.perryn-butler.co.uk

perrynbutler247@btinternet.com

01437767869



Limited Edition Bronzes

Made from predominantly Blue Stone Carvings

*This catalogue is of postable
bronzes only, Perryn has much
larger works available in stone
and slate*

The Artist

Born 1953



Perryn Butler has been working as a sculptor in Pembrokeshire, for close to 30 years. Her sculptures have been commissioned and bought by collectors worldwide from Europe to Australia, Asia, and the Americas.

And they grace such public places as the Environment Agency in Ireland, the National Library of Wales and the Centre for European Culture in Germany.

In Perryn Butler's work the influence of very early sculpture is undeniable. Perryn studied ancient forms of representation and became fascinated by the abstract genius of African, South American and Inuit

sculpture.

The other great influence on her work is music. As an accomplished musician herself, Perryn uses music as both subject matter and as metaphor. Music infuses her sculptures with rhythm and flow and with their intensely emotional character. For Perryn 'the joy of carving is that it is difficult. It is always an experimental and potentially dangerous journey, which is the challenge and excitement' she enjoys.

'When you work with stone', she says, 'you can't stick a piece back on and you are always constricted by the size of the block'. 'This', she suggests, 'calls for ingenuity and a fluidity of expression that does not exist in other materials... and demands a sort of visual shorthand.' And elsewhere she says about her work: 'The compulsion to make is a huge driving force and ideas may rumble for ages before I pick up a piece of stone. Sometimes I see a lump of stone and know what it is immediately. I just know what I have to remove to make it sing. Other times I have a vague idea for one side of a piece and it will emerge very slowly'.

The majority of Perryn's small bronzes started life as a piece of Bluestone.

The Preseli Mountains are wild and windswept with spectacular views. They were the stamping ground of our ancient ancestors who built burial mounds, stone circles, cromlechs and dolmens. This is the place where the magical blue stones came from and were taken to Stonehenge to form the inner circle.



It is extremely hard to carve, speckled granite that exudes history. It is millions of years old and immensely satisfying to carve into something that will continue to last for millennia. It speaks to Perryn like no other stone and evolves into something unexpected. If she had used any other material it would not have emerged in this way, so influenced is she by its essence. Apparently the dust nurtures plants and the stone has a measurable magnetism. It comes in a variety of colours from blue to bluey green to browns with orange flecks. No two pieces are the same some are finer grained and some have tiny holes within.

Patination of bronze

This is the alchemy of using heat and chemicals to change the colour and texture of bronze. No two will be identical as how it colours depends upon the humidity and temperature in the air, as well as how it is heated. It is a very intuitive process that only the artist who made the sculpture can really judge.



The signature, usually on the underside. The squiggle is Perryn's makers mark

If there is a base then it will be on the underside of a form.



1 Preseli Bird

This was the very first piece Perryn Made in Bluestone. She was given a chunk of the stone found by a friend who was walking the Preselis. It was the start of an enduring passion for the material, which is so hard to carve it naturally forces the artist to abstract into simple forms



Edition of/9 13 x 14.5 x 3.5cms



2 Bird from the blue mountains



Edition of /9 28 x15 x5cms



This bird has architectural forms and is reaching up,
sensing the wind and preparing for flight

3 Little man



Edition /9 12 x 20 x 4.5cm

The Mother and Child is a traditional subject with sculptors, and we all know how a woman's emotions are altered by motherhood. This a father and child. A man changes profoundly too, when he has a child.

4 Silkie

Bronze Edition of /12 11.5 x 8 x 5 cms

There is a legend told in places like Pembrokeshire, which have coastlines populated by seals, that there are seal people called Silkies or Selkies in Scotland. They come to shore and hide their skin. They may notice a beautiful human and court and marry them. For a while they are very happy but his yearning for the sea overwhelms him and one day he disappears leaving her to raise the child on her own. When the child is grown her father may come back and entice the offspring into the sea.



5 Lady Guitar



19 x 8 x 5 cms Edition of /49

Perryn has been a singer song writer, performing since the age of fifteen. Music runs through her like a river. When she feels sad, she plays until the feelings melt away. A guitar is much more to her than just a musical instrument, it is a vehicle for joy and she is lost without it. When playing music with other people the communication is on a deeper level than through speech.

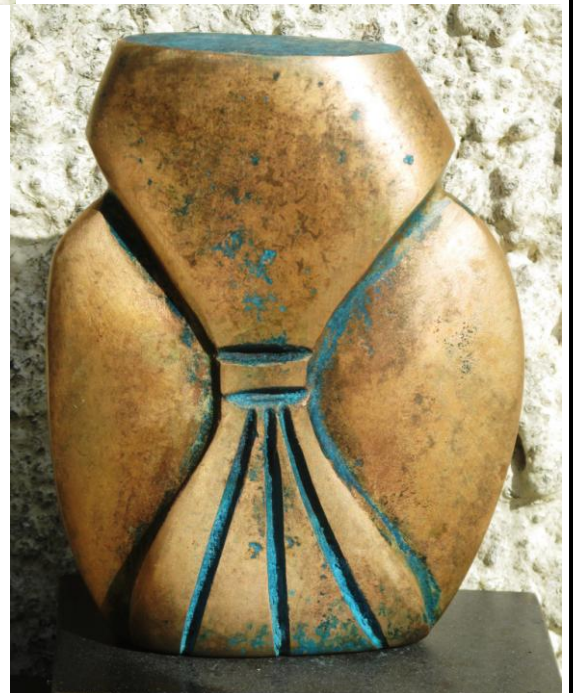
Various artists of the 20th century used musical instruments in their sculpture and paintings as metaphors, such as Picasso, Jacque Lipschitz and Braque. Perryn has made a series of music related pieces and it is an ongoing theme...



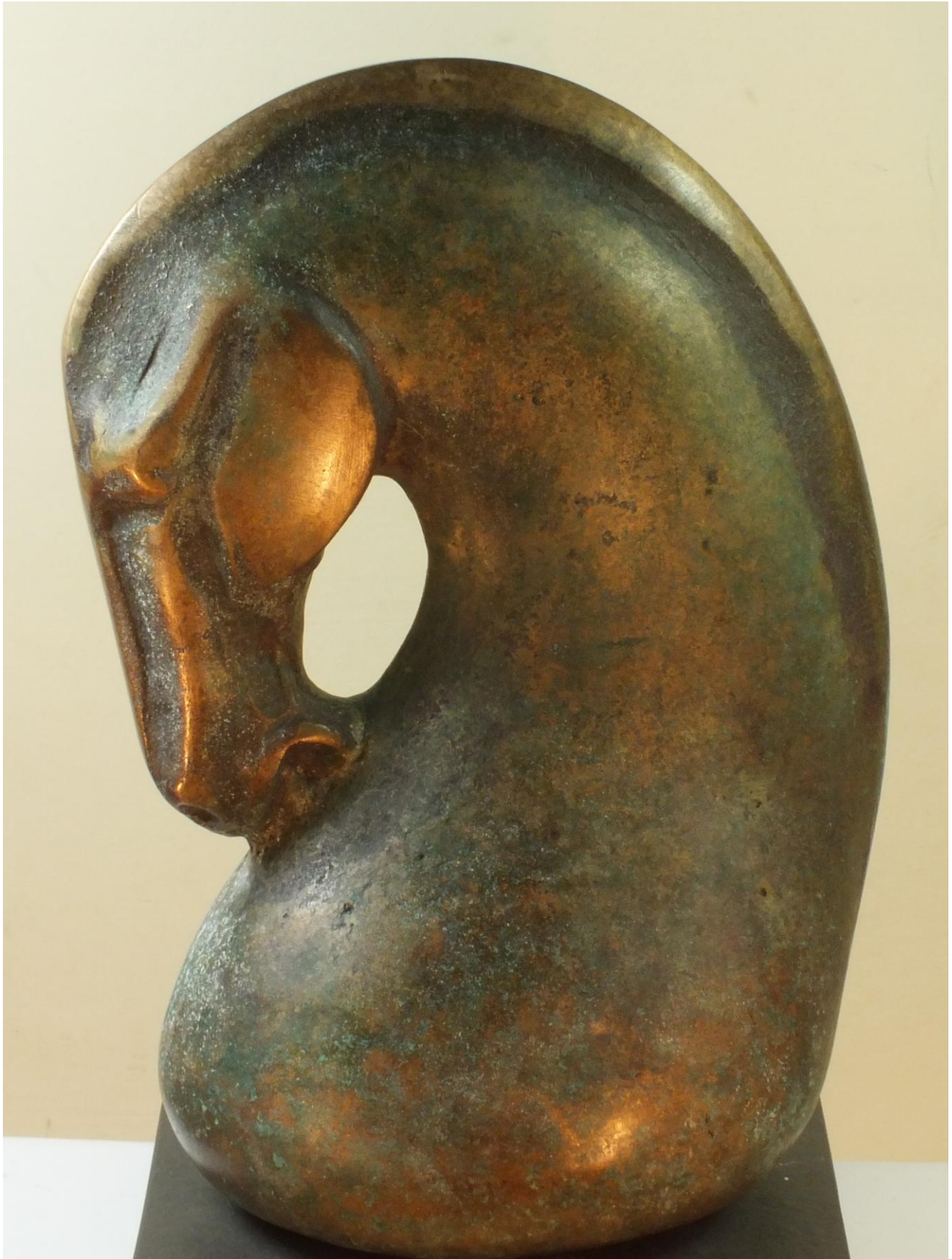
6 Blue Mamma



The Janus or double head is a constant theme in Perry's work and reflects her Celtic roots.



7 Big Horse



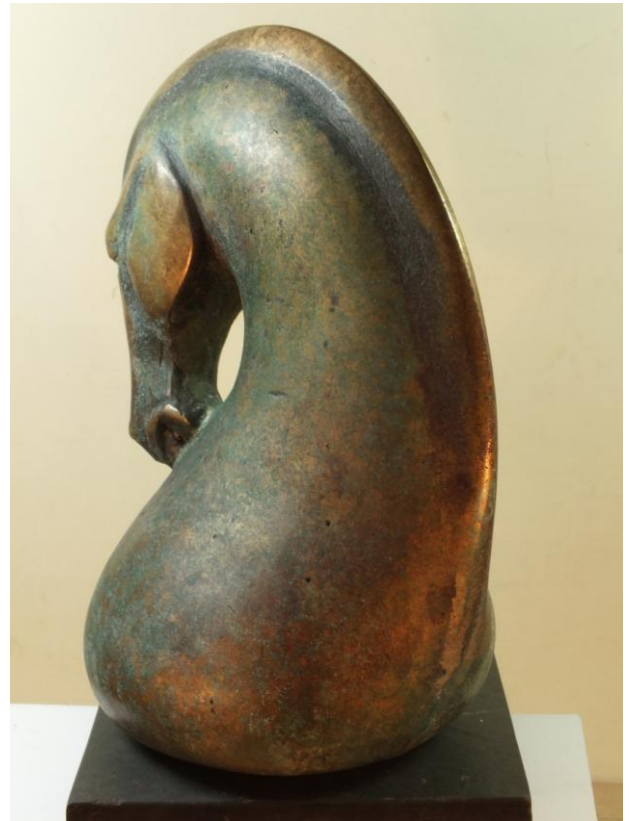
25x 12x 12cms

Edition of 49



The patination is unique on each one as the colour depends upon the air humidity and the chemical mix and the amount of heat applied. This is solid bronze and very heavy; it is larger than the other bronze horses and each one responds to patination in a very different way.

Like many children Perryn was passionate about horses. She drew their heads on her maths books on her Geography book, in detention. She had no interest in the legs but in the beautiful shapes of the bones of the head, and neck. She could draw them with her eyes shut which bled into the sculpture in later life. With each one she is looking at shape and character, as like people, horses are very individual in nature. She is also interested in the relationship man has with horses throughout history

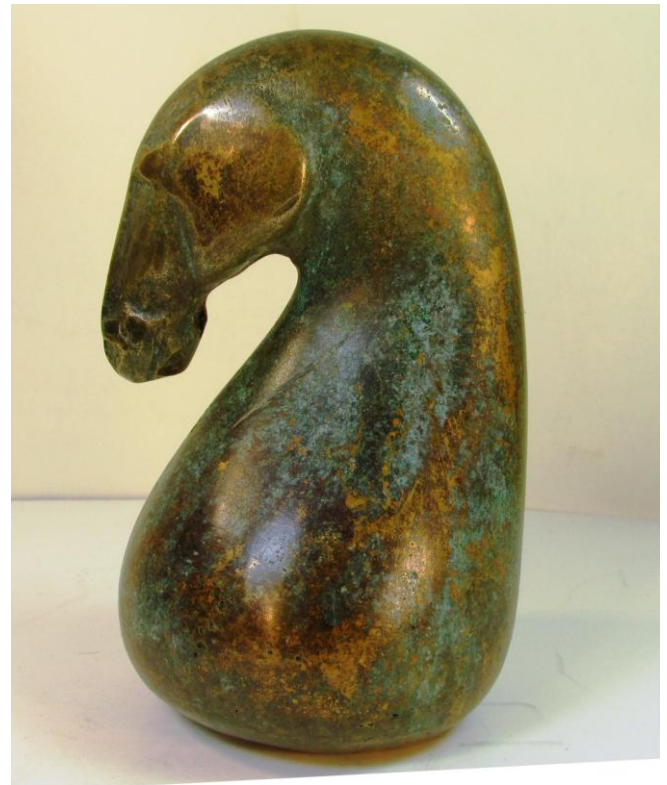


8 Little Horse



13x8x8cms

Edition 12



Perryn grew up with a Welsh Mountain pony that had a head the size of a hunter and little short legs. She was a character and a half. Horses are strong with pronounced temperament.

9 Sea Horse



13x7x7cms

Edition of 12

The only creature apart from penguins where the male looks after the young.

This is thinner than the other horses.

10 Celts



25 x16x2cms

Edition of 49

The three counties of Pembrokeshire, Ceredigion and Carmarthenshire abound with Celtic crosses; Nevern and Carew being the most famous. She became intrigued with the extraordinary and varied surface carving upon them. This piece was influenced by that study.

11 Earth Mother



15x12x4cms Edition of 12

This piece came from studying ancient Venus's and early stone votive carvings of The Great Mother goddess; it is primitive and rugged and varies much in the patination.

Back



12 Lovers



18x7.5x5cms

edition of 12



This started out as a chunk of blue stone found in the hills. Love is a constant theme in Perryns work, the melding of forms and the closeness. Having the juxtaposition of two figures is more interesting than one, because there is an opportunity to echo form and shape.

13 Love And War



18x12x 6cms

Edition of 49

This was inspired by the shape of a flintlock on a gun. This to Perryn looked like tiny lovers.
Love and hate are closely related.



14 Metamorphosis



12x14x6cms

Edition Of 49

Shape shifting is changing from human to animal or animal to bird forms.



15 Mau



20.5x 5x4cms Edition of 49

Mau was an Egyptian cat god who protected Ra and killed the evil serpent

15 Polar Bear



12x25x6cms

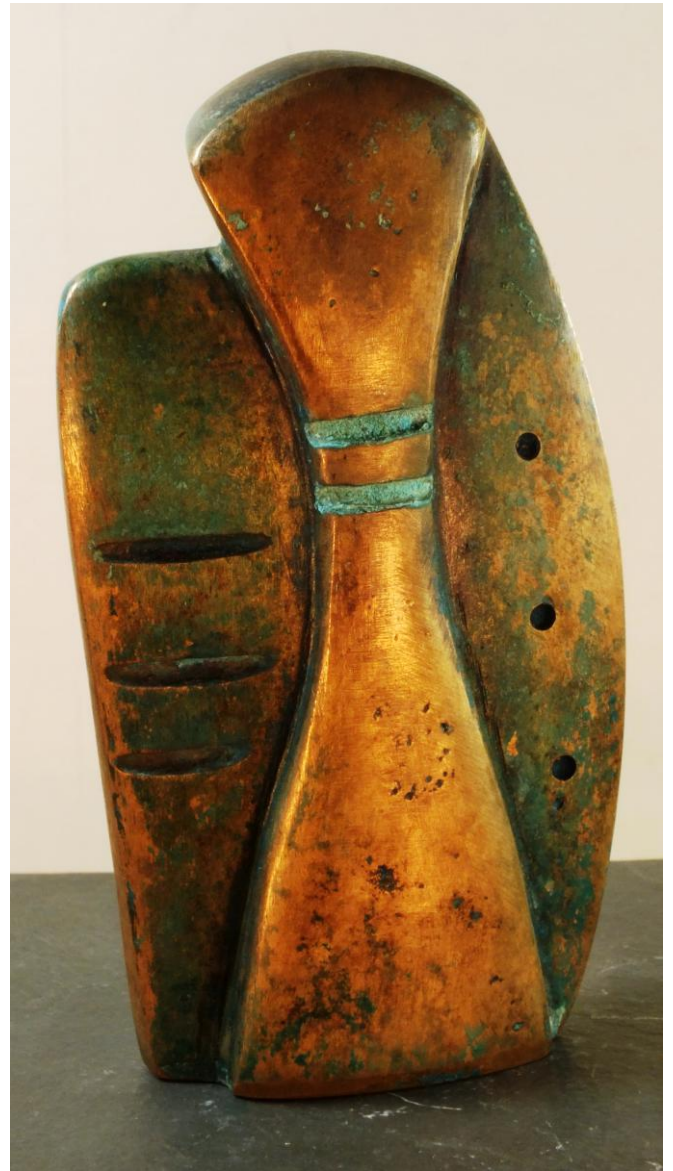
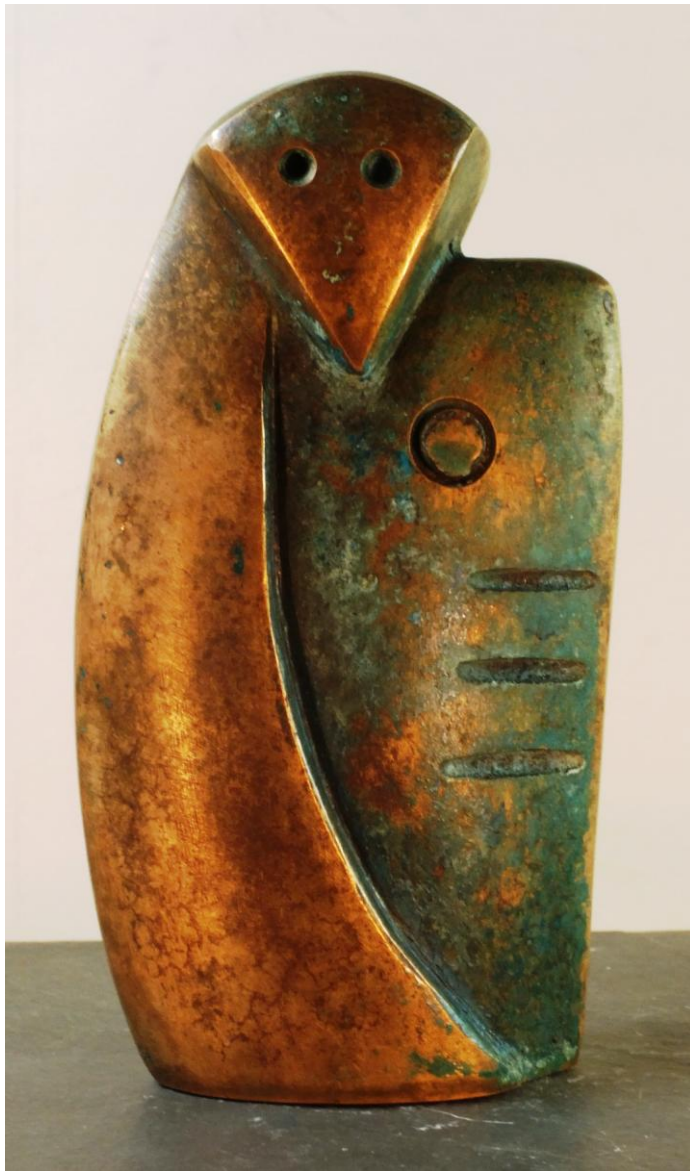
Edition of 49



This was inspired by Perryn's admiration of Inuit sculpture where they believe that whatever you carve is already inside the stone and the carver releases it.



16 Boudicca



12x6.5x3cms

Edition of 49

She was a Celtic Warrior and started life as a chip off a huge rock in the Preselis, perhaps cracked off millennia ago. Perryn is very connected to the Preseli hills and our ancient culture.

17 Circle Of Life



7x10x5cms Edition of 12

Three is a magical number in many cultures:-in Celtic Lore there are the Three Mothers; Roman, the three graces; and in Christianity, the trinity among many more.

Here we have three people holding on to a disc, which symbolizes how everything in life and nature goes in circles. As Taoist believe, everything you do comes back to you.

