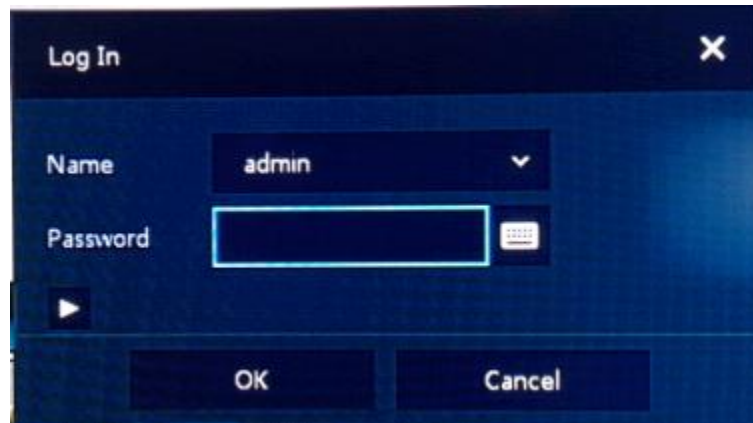




**Step by step guide to:**  
Virtual Matrix setup, basic camera selection  
and PTZ control



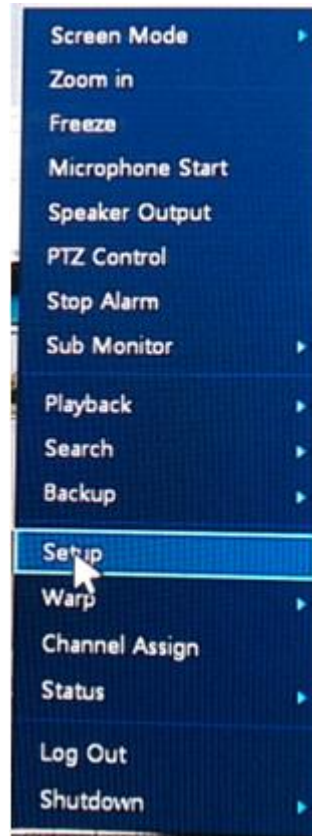
### Login

To Log into the Virtual Matrix, right click any where on the screen to display the main menu.

Select “Login”

This will display the login page:

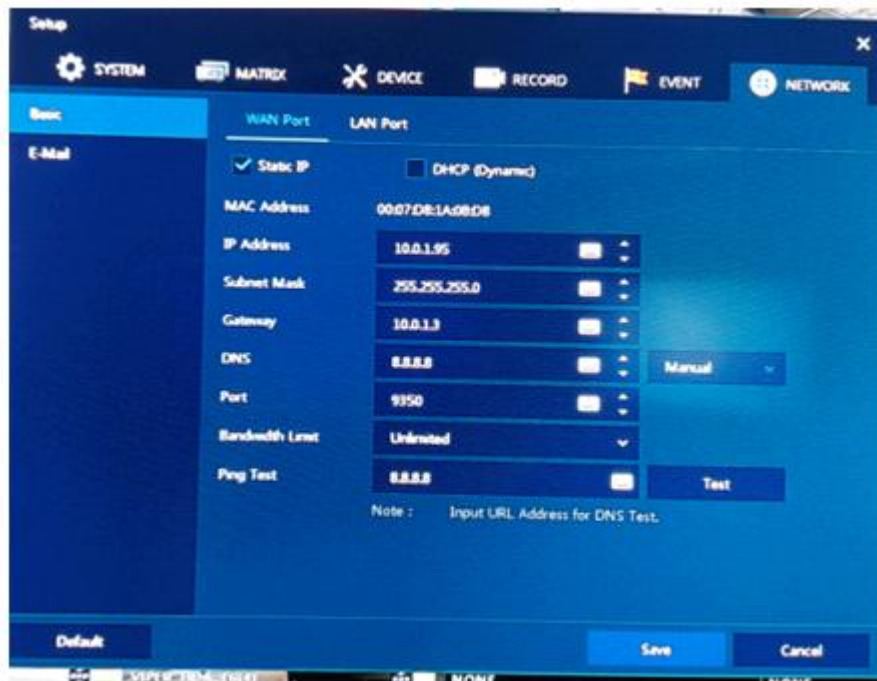
Default is admin / admin



Select the setup menu

Right click on the screen to display the main menu, select the “Setup” option



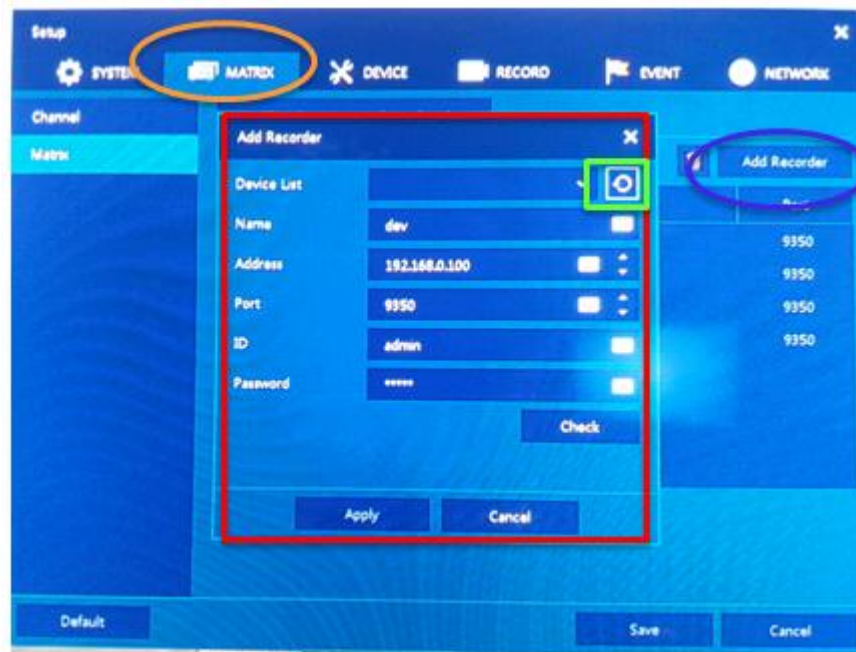


## Set VMC IP Address

Right click to go to the main menu and select “Setup”

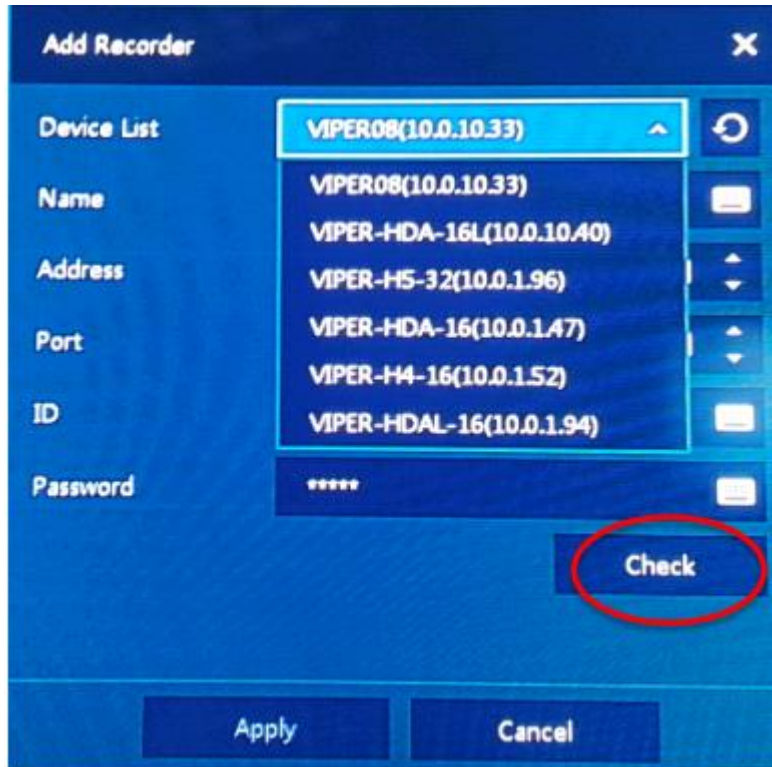
Select the “Network” tab, set the Virtual Matrix WAN port address to be in the same range as the IP addresses of the recorders on the network.

Click on “Save”



## Adding recorders

1. Go to the “Matrix” tab.
2. Click on the Add recorder button
3. The Add recorder menu will appear.
4. Click on the search icon
5. The Matrix will search for other devices on the network in the same IP range



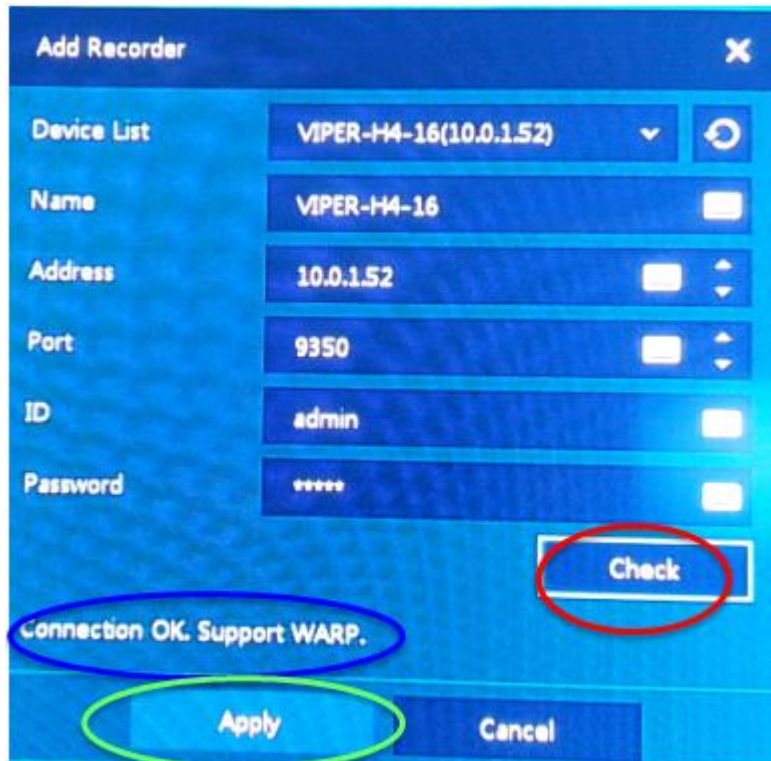
### Recorder list

All discovered devices will be displayed in the drop down list.

Select the required recorder

Click on "Check"





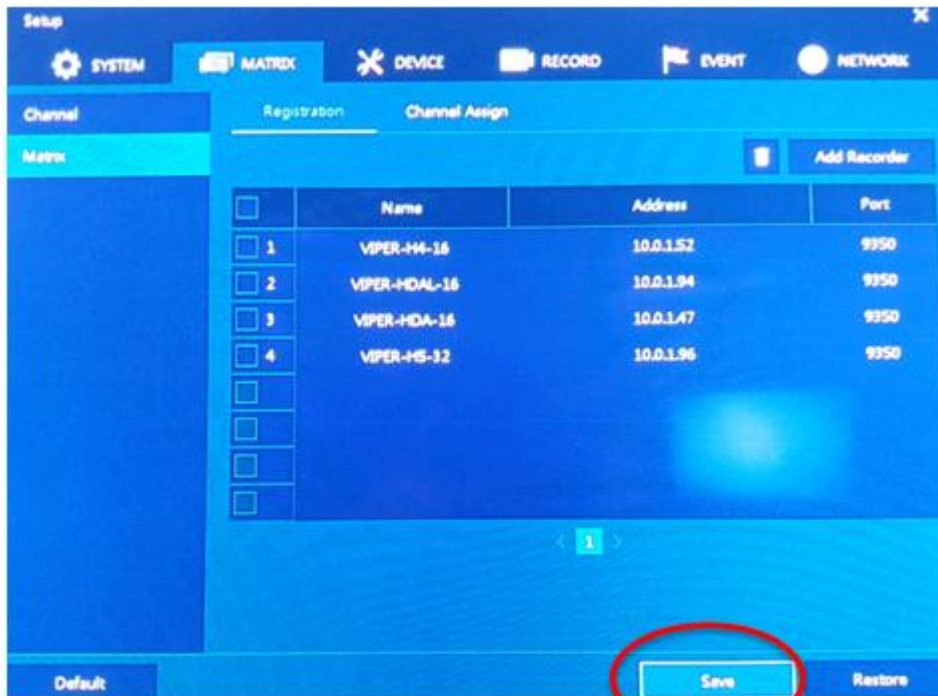
### Adding recorders

Click on the “check box”.

If all is ok the message “Connection OK, Support WARP” will be displayed

Click on “Apply”.

Then repeat for all recorders.



## Saving connected recorders

Once all the recorders have been added, click on “Save” to confirm the list

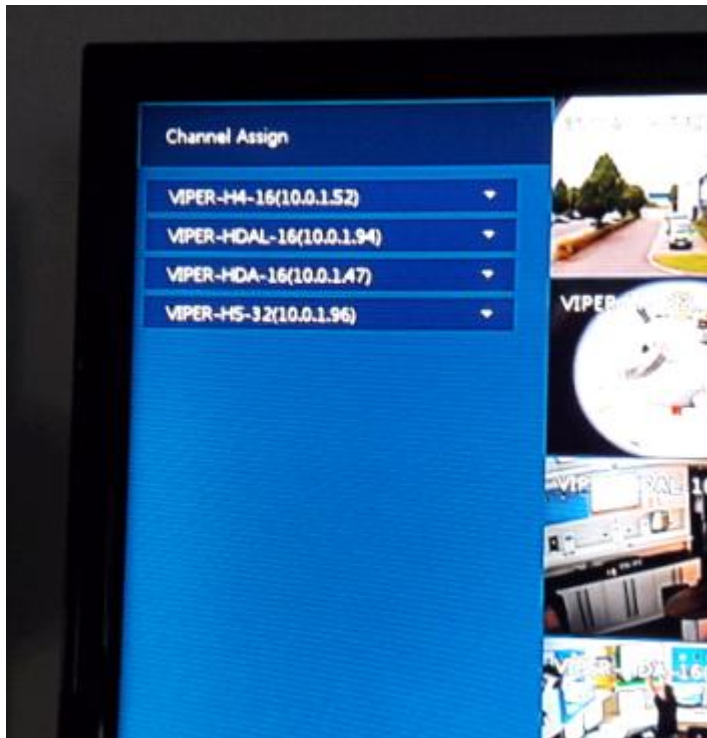




### Assigning cameras

Right click on the main screen to display the main menu.

Select the “Channel Assign” option .



## Channel Assign

The List of available recorders will be displayed on the left side of the screen, with an empty 8 x 8 grid.

## Channel Assign



Expand each recorder individually using the drop down arrow

Highlight each camera to show a cameo in the bottom left, to confirm this is the correct camera

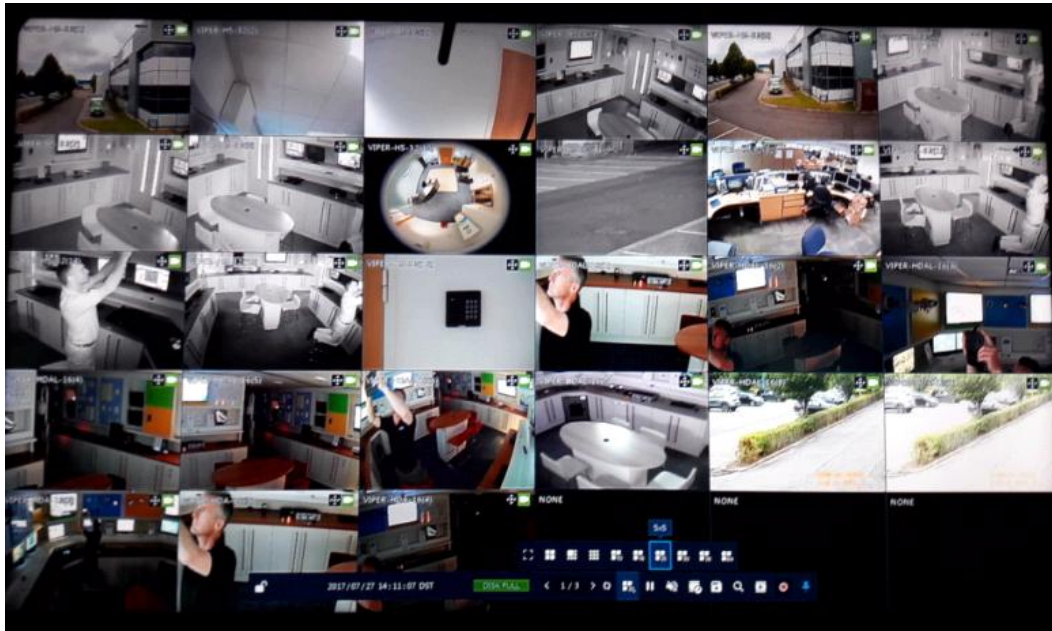
Click and drag the camera from the list to the required screen position within the 8 x 8 screen split.

Repeat for each recorder

When all cameras have been allocated segments, click on Exit to save the camera positions.



## VMC CAMERA SELECTION

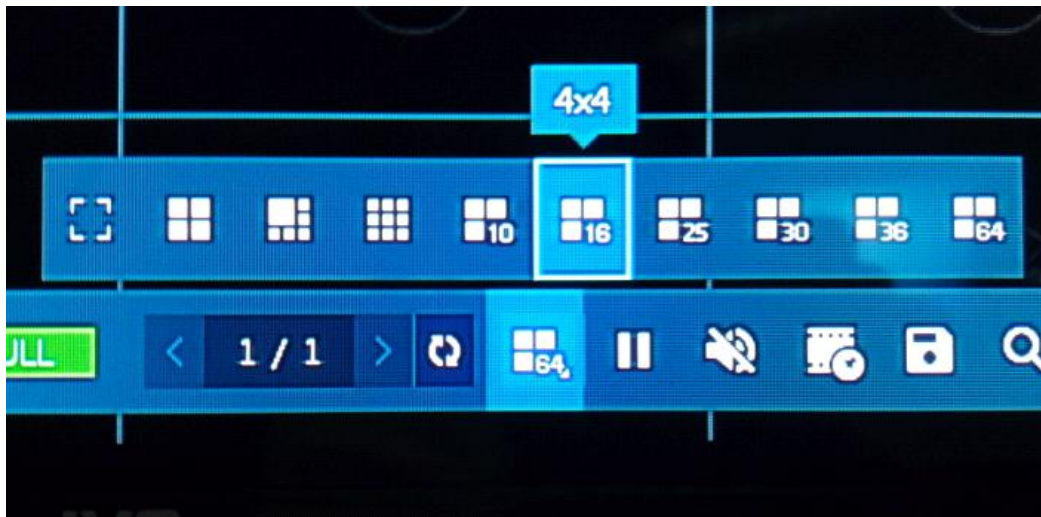


### Camera Selection

The Main screen will default to a 64 way split.

Double click on a camera to select a full screen view.

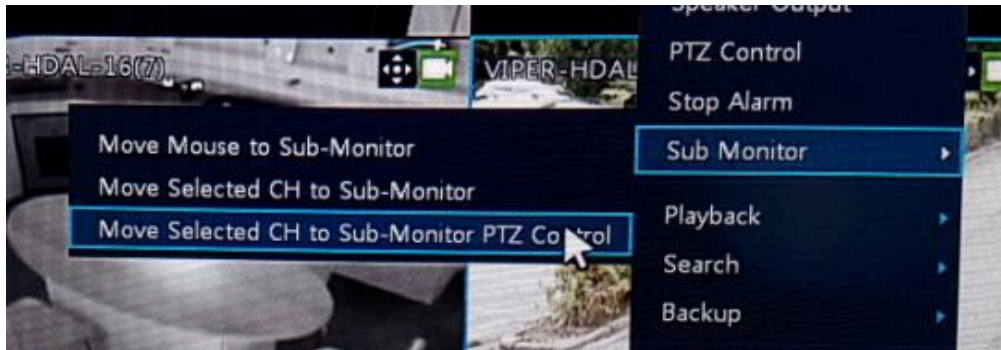
Double click on full screen to return to the previous split screen.



### Split screen options

The Main screen will default to a 64 way split.

To change to different split screen options use the monitor icon selection shown.

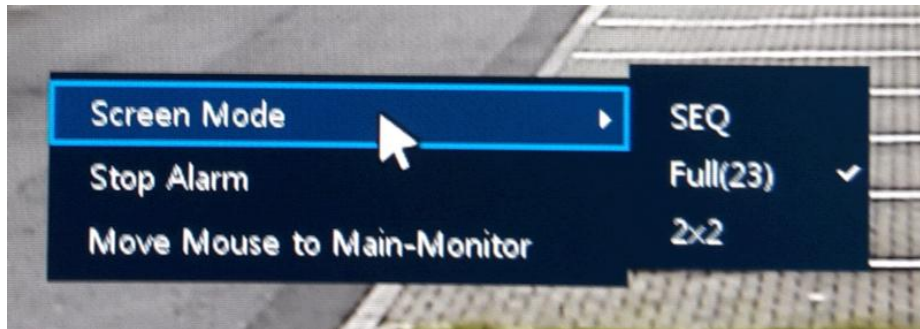


### Sub Monitor Selection

To send mouse control to the Sub (2<sup>nd</sup>) monitor, either:

1. Move the mouse pointer off the right-hand side of the Main monitor, it will appear on the left of the Sub  
or
2. Select the Sub Monitor options via a right click as shown. This give several options including PTZ

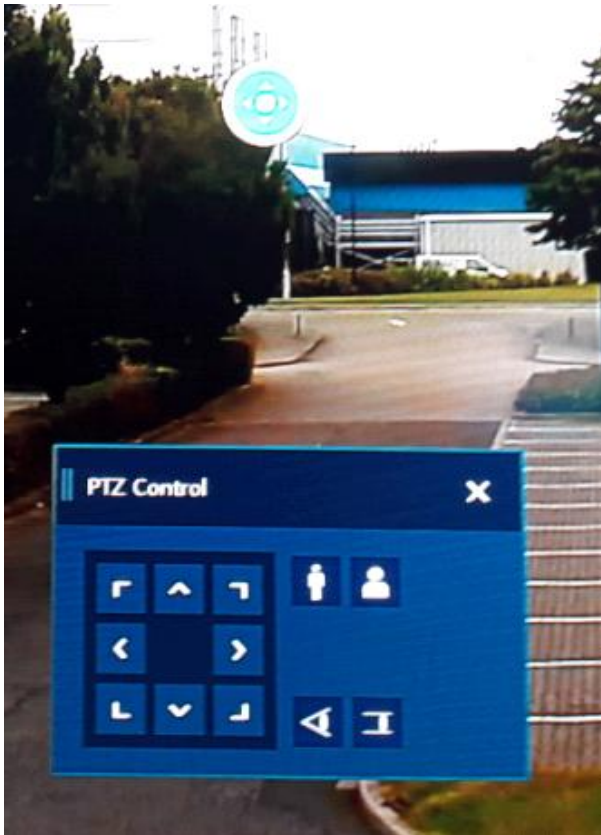




### Main and Sub Monitor Split screen options

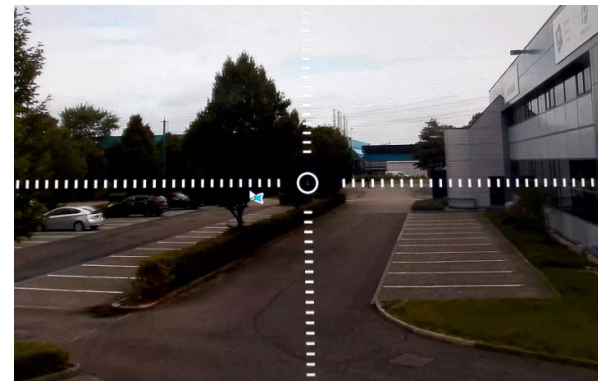
When the Main monitor is showing a **64** way split the Sub monitor can display a **maximum** of a 4 way split

If the main monitor is displaying a **36**way split (or less) then the sub monitor can also display up to a **36** way split.



## PTZ control

PTZ control can be selected on both the Main and Sub monitor by right clicking and selecting the PTZ control option:





## [Presets / Tours](#)

When in PTZ mode right click anywhere on the screen to display options for selecting Presets tours etc: