

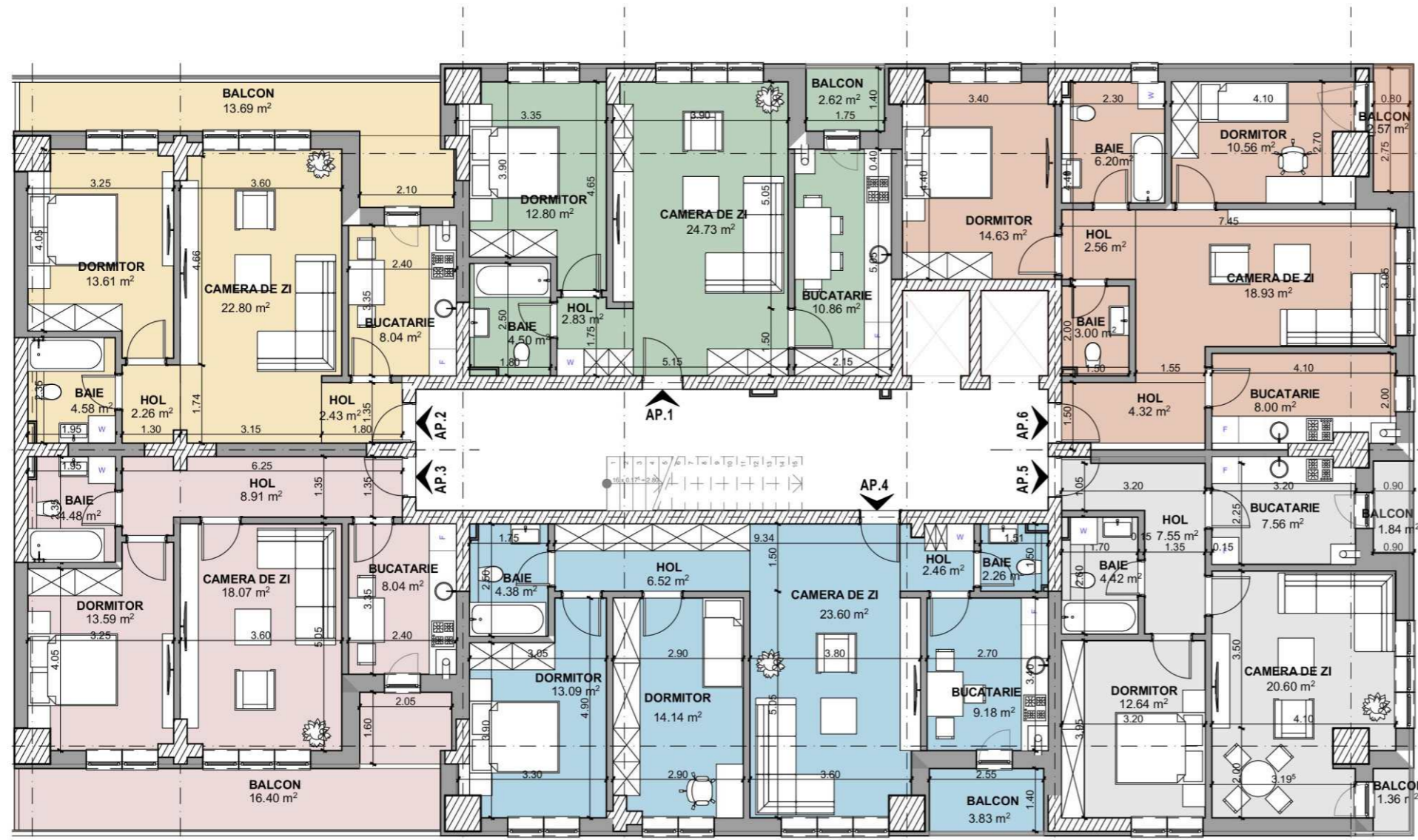
Bloc scara B





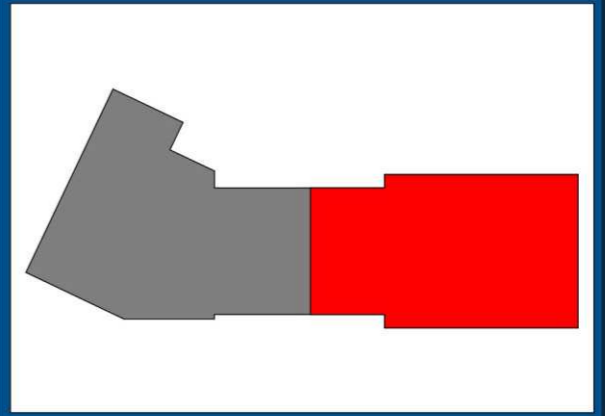


SCARA A
SCARA B



Nr	Nr camere	S construit	S util	Pret			Mentiiuni
				Integral	Transe 30%;40%;30%	Avans 20%	
1	2 camere	71.10m ²	58.35m ²	63.240E	65.620E	68.000E	
2	2 camere	81.32m ²	67.41m ²	65.100E	67.550E	70.000E	
3	2 camere	83.62m ²	69.49m ²	67.890E	70.445E	73.000E	
4	3 camere	96.30m ²	79.58m ²	79.050E	82.025E	85.000E	
5	2 camere	68.90m ²	56.17m ²	59.055E	61.277E	63.500E	
6	3 camere	87.30m ²	70.90m ²	73.470E	76.235E	79.000E	

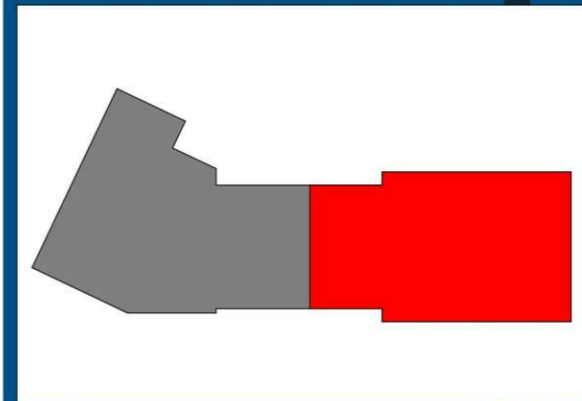
- ETAJ 9
- ETAJ 8
- ETAJ 7
- ETAJ 6
- ETAJ 5
- ETAJ 5
- ETAJ 3
- ETAJ 2
- ETAJ 1





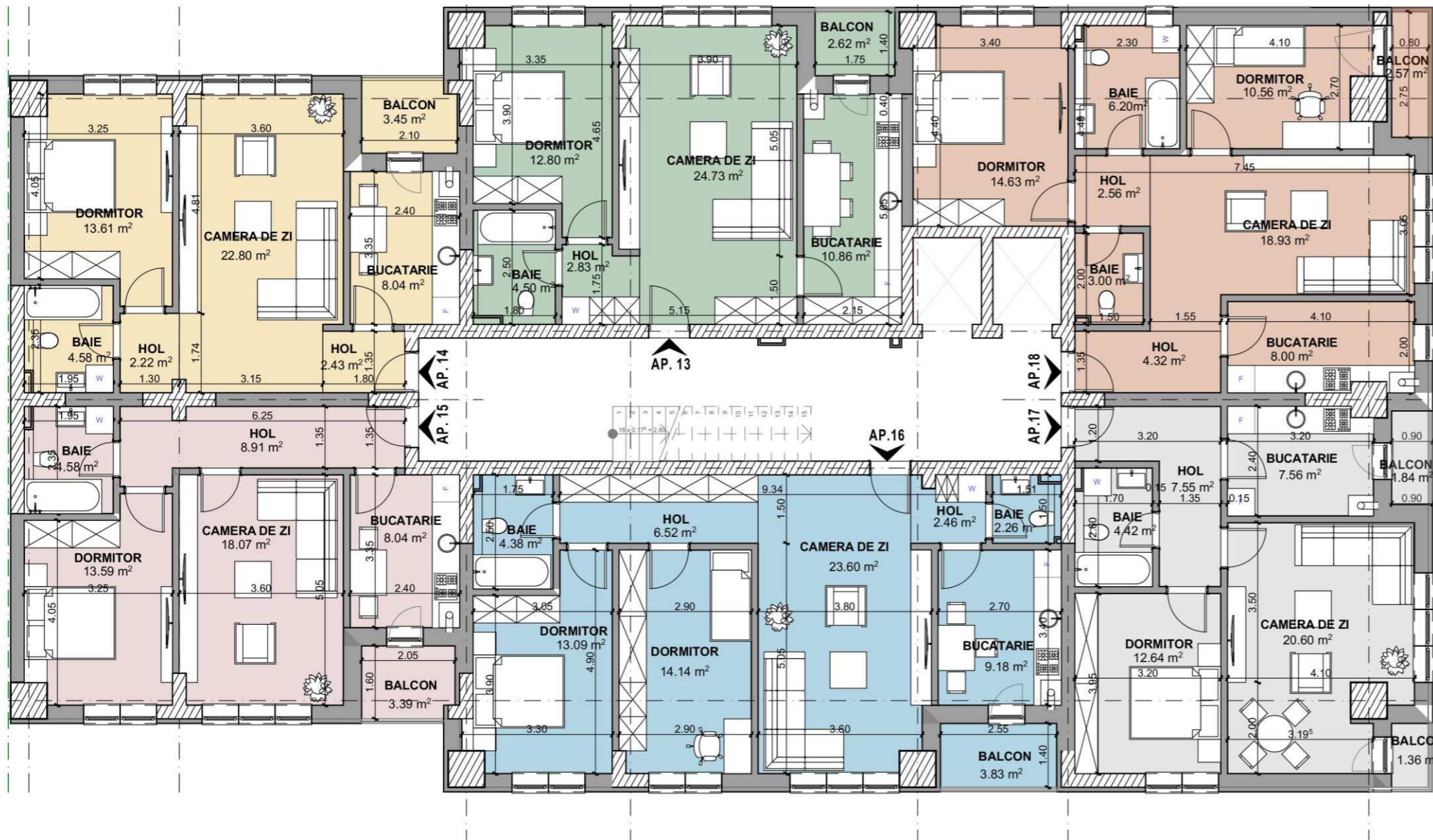
- ETAJ 9
- ETAJ 8
- ETAJ 7
- ETAJ 6
- ETAJ 5
- ETAJ 5
- ETAJ 3
- ETAJ 2
- ETAJ 1

Nr	Nr camere	S construit	S util	Pret			Mentiuni
				Integral	Transe 30%;40%;30%	Avans 20%	
7	2 camere	71.10m ²	58.35m ²	63.240E	65.620E	68.000E	
8	2 camere	69.60m ²	57.11m ²	60.450E	62.725E	65.000E	
9	2 camere	69.60m ²	56.48m ²	62.775E	65.137E	67.500E	
10	3 camere	96.30m ²	79.58m ²	79.050E	82.025E	85.000E	
11	2 camere	68.90m ²	56.17m ²	59.055E	61.277E	63.500E	
12	3 camere	87.30m ²	70.90m ²	73.470E	76.235E	79.000E	



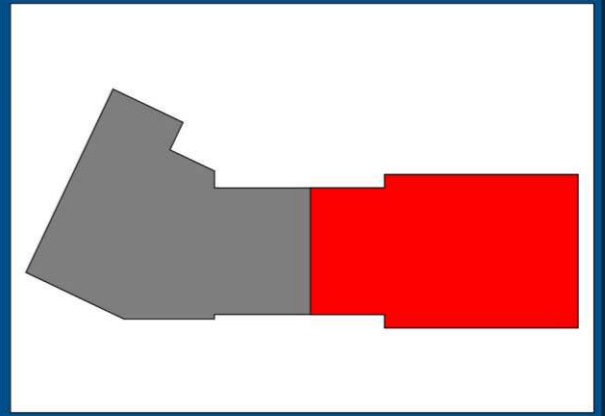


SCARA A
SCARA B



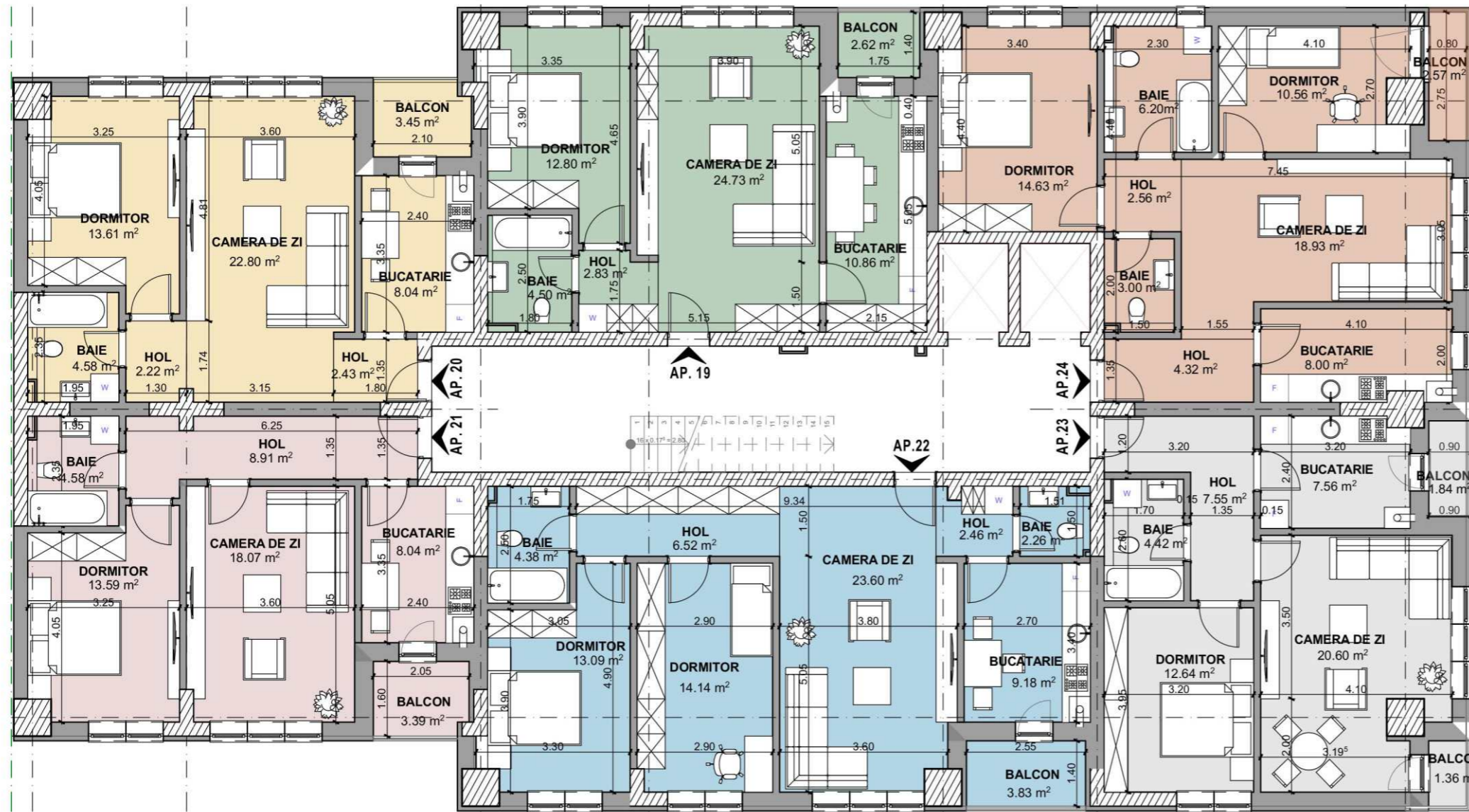
Nr	Nr camere	S construit	S util	Pret			Mentiiuni
				Integral	Transe 30%;40%;30%	Avans 20%	
13	2 camere	71.10m ²	58.35m ²	63.240E	65.620E	68.000E	
14	2 camere	69.60m ²	57.11m ²	60.450E	62.725E	65.000E	
15	2 camere	69.60m ²	56.48m ²	62.775E	65.137E	67.500E	
16	3 camere	96.30m ²	79.58m ²	79.050E	82.025E	85.000E	
17	2 camere	68.90m ²	56.17m ²	59.055E	61.277E	63.500E	
18	3 camere	87.30m ²	70.90m ²	73.470E	76.235E	79.000E	

- ETAJ 9
- ETAJ 8
- ETAJ 7
- ETAJ 6
- ETAJ 5
- ETAJ 5
- ETAJ 3
- ETAJ 2
- ETAJ 1



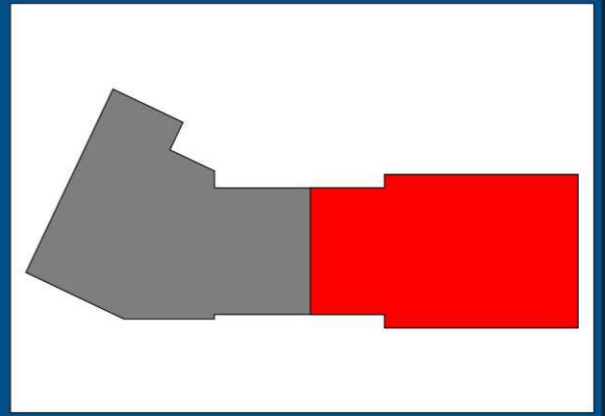


SCARA A
SCARA B



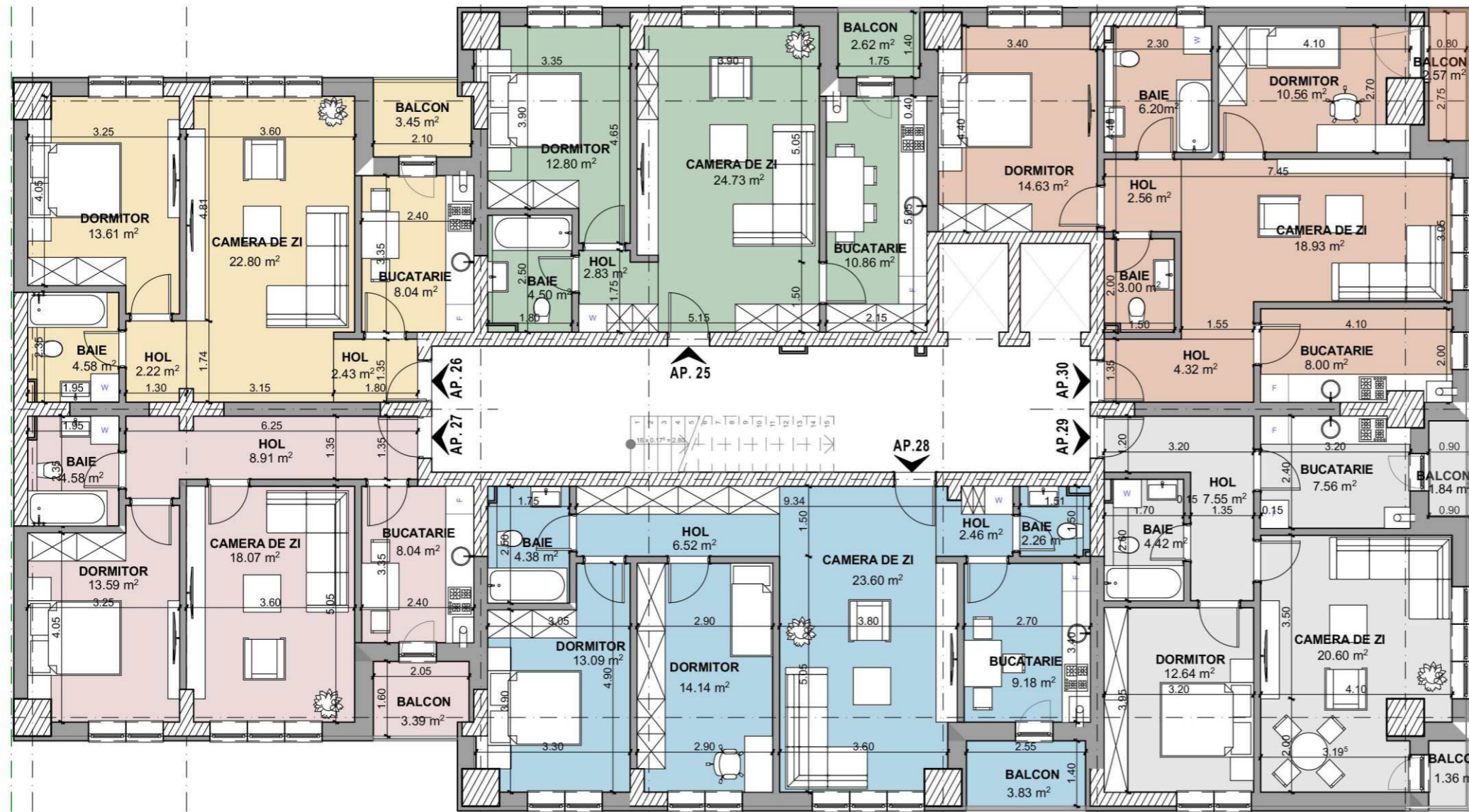
Nr	Nr camere	S construit	S util	Pret			Mentiiuni
				Integral	Transe 30%;40%;30%	Avans 20%	
19	2 camere	71.10m ²	58.35m ²	63.240E	65.620E	68.000E	
20	2 camere	69.60m ²	57.11m ²	60.450E	62.725E	65.000E	
21	2 camere	69.60m ²	56.48m ²	62.775E	65.137E	67.500E	
22	3 camere	96.30m ²	79.58m ²	79.050E	82.025E	85.000E	
23	2 camere	68.90m ²	56.17m ²	59.055E	61.277E	63.500E	
24	3 camere	87.30m ²	70.90m ²	73.470E	76.235E	79.000E	

- ETAJ 9
- ETAJ 8
- ETAJ 7
- ETAJ 6
- ETAJ 5
- ETAJ 4
- ETAJ 3
- ETAJ 2
- ETAJ 1



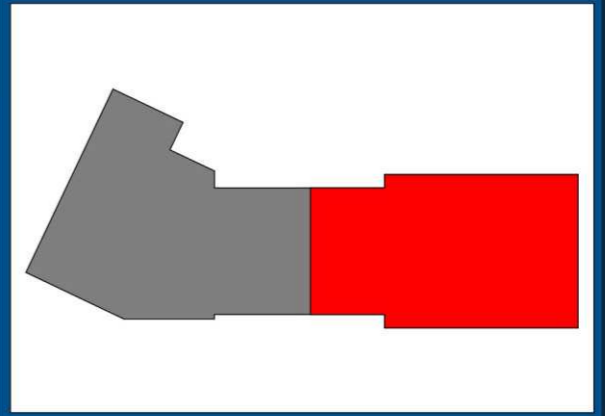


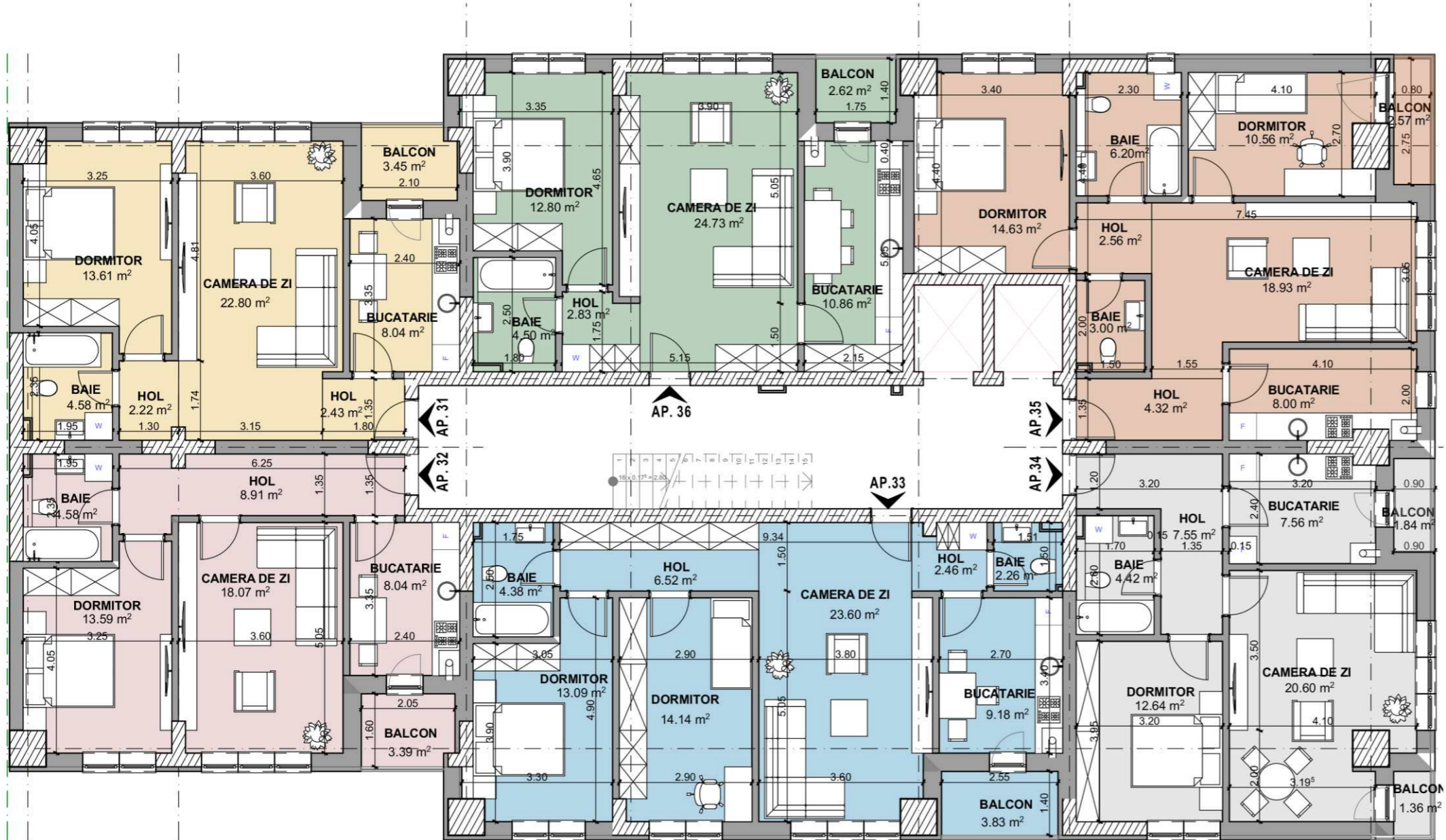
SCARA A
SCARA B



Nr	Nr camere	S construit	S util	Pret			Mentiiuni
				Integral	Transe 30%;40%;30%	Avans 20%	
25	2 camere	71.10m ²	58.35m ²	63.240E	65.620E	68.000E	
26	2 camere	69.60m ²	57.11m ²	60.450E	62.725E	65.000E	
27	2 camere	69.60m ²	56.48m ²	62.775E	65.137E	67.500E	
28	3 camere	96.30m ²	79.58m ²	79.050E	82.025E	85.000E	
29	2 camere	68.90m ²	56.17m ²	59.055E	61.277E	63.500E	
30	3 camere	87.30m ²	70.90m ²	73.470E	76.235E	79.000E	

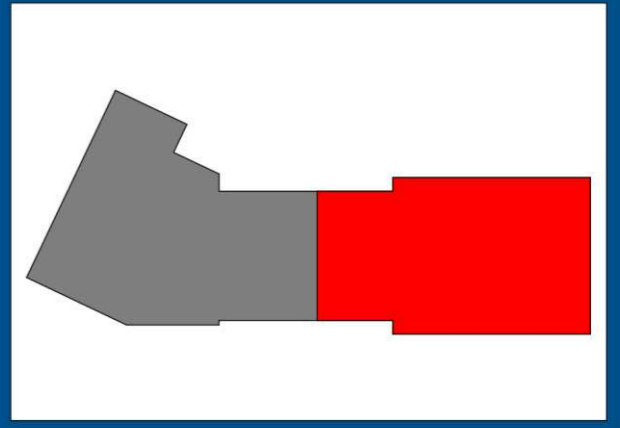
- ETAJ 9
- ETAJ 8
- ETAJ 7
- ETAJ 6
- ETAJ 5
- ETAJ 5
- ETAJ 3
- ETAJ 2
- ETAJ 1





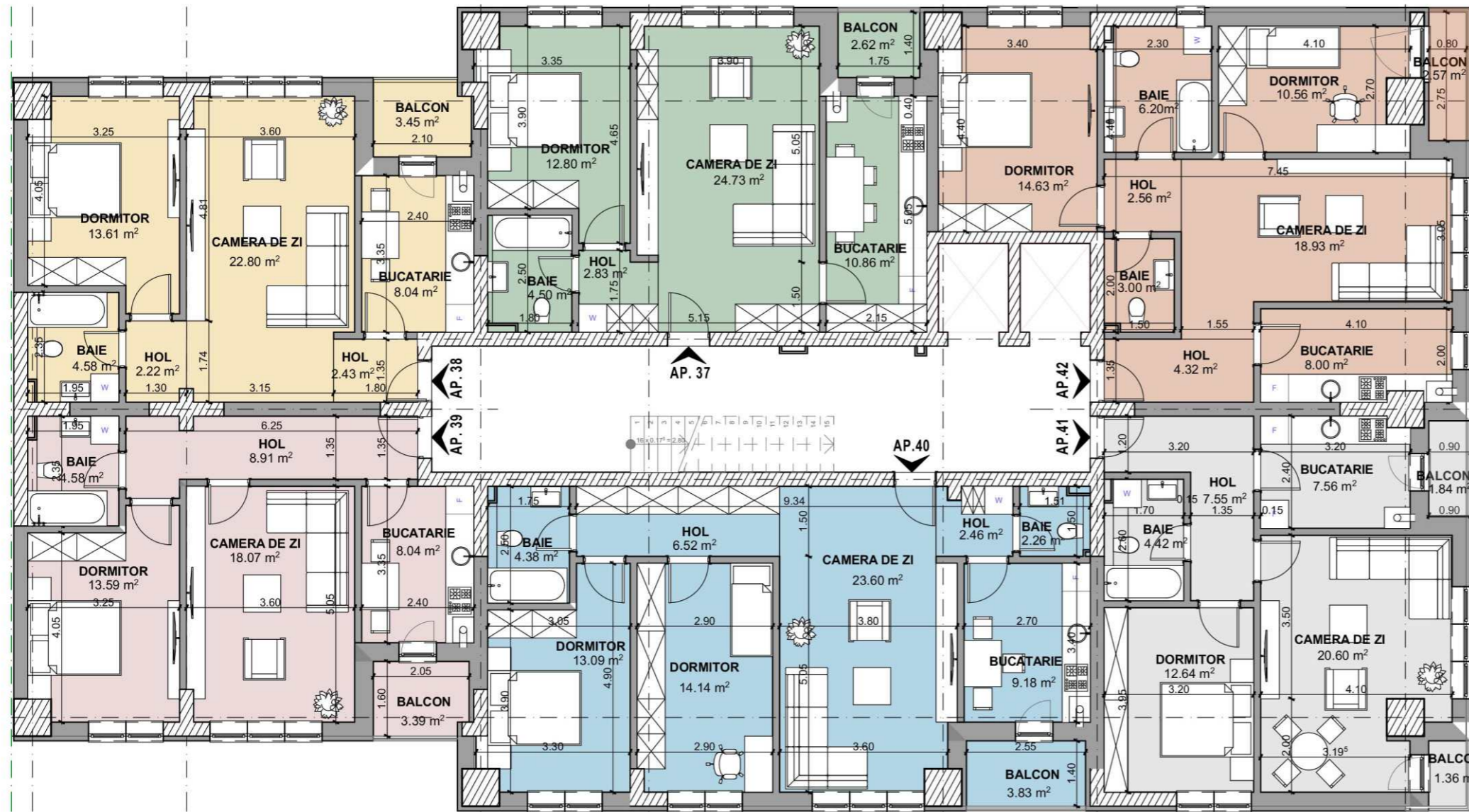
- ETAJ 9
- ETAJ 8
- ETAJ 7
- ETAJ 6
- ETAJ 5
- ETAJ 5
- ETAJ 3
- ETAJ 2
- ETAJ 1

Nr	Nr camere	S construit	S util	Pret			Mentuni
				Integral	Transe 30%;40%;30%	Avans 20%	
31	2 camere	71.10m ²	58.35m ²	63.240E	65.620E	68.000E	
32	2 camere	69.60m ²	57.11m ²	60.450E	62.725E	65.000E	
33	2 camere	69.60m ²	56.48m ²	62.775E	65.137E	67.500E	
34	3 camere	96.30m ²	79.58m ²	79.050E	82.025E	85.000E	
35	2 camere	68.90m ²	56.17m ²	59.055E	61.277E	63.500E	
36	3 camere	87.30m ²	70.90m ²	73.470E	76.235E	79.000E	



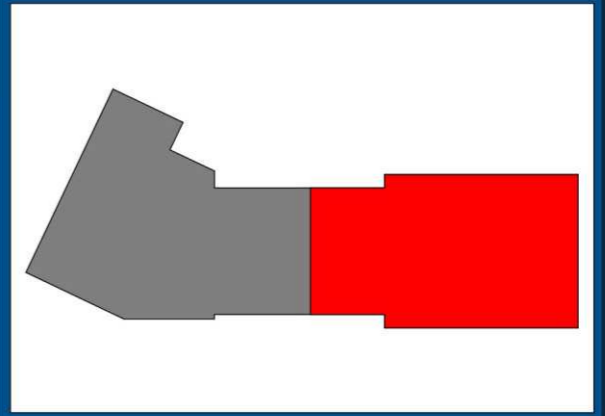


SCARA A
SCARA B



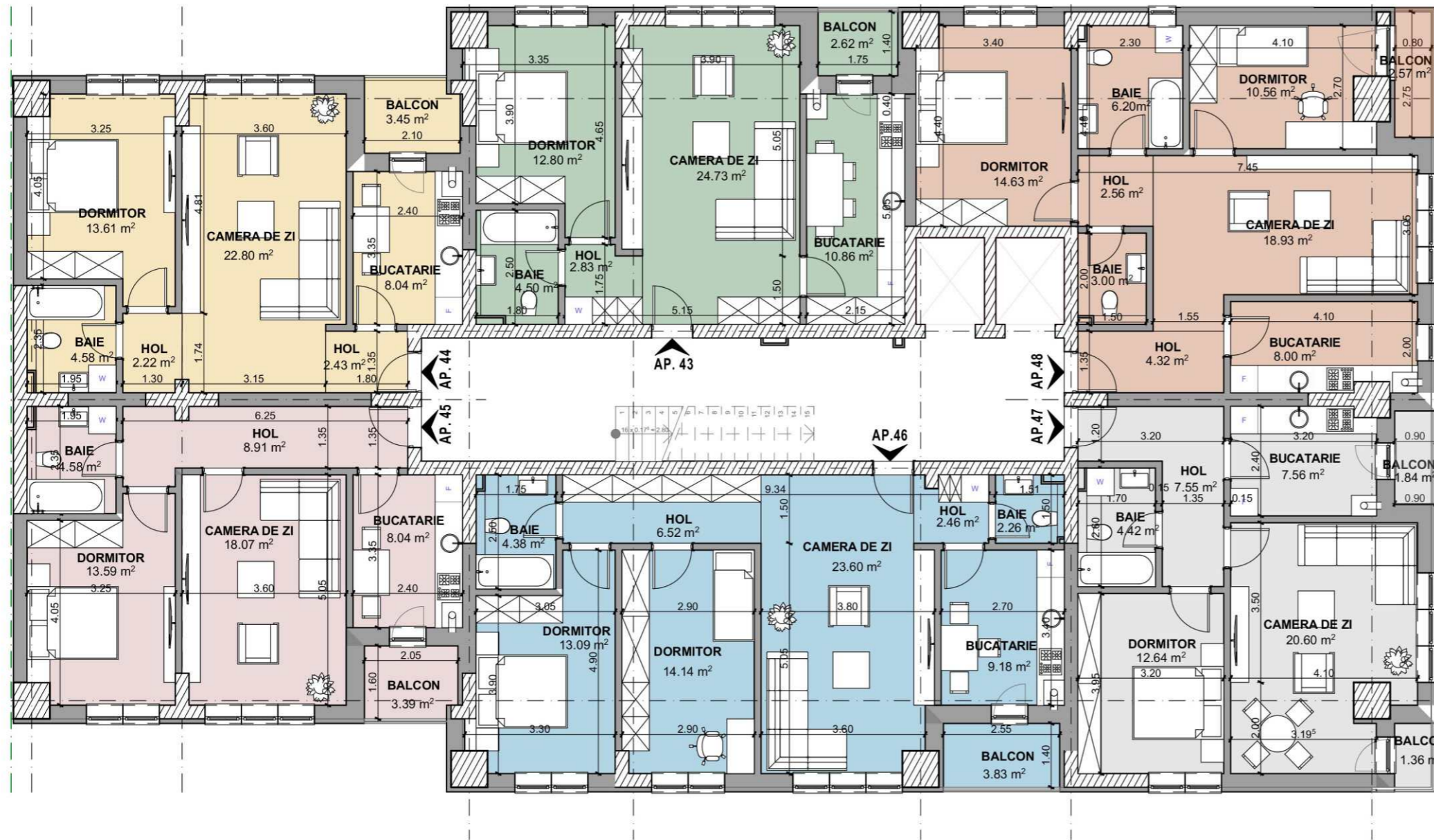
Nr	Nr camere	S construit	S util	Pret			Mentuni
				Integral	Transe 30%;40%;30%	Avans 20%	
37	2 camere	71.10m ²	58.35m ²	63.240E	65.620E	68.000E	
38	2 camere	69.60m ²	57.11m ²	60.450E	62.725E	65.000E	
39	2 camere	69.60m ²	56.48m ²	62.775E	65.137E	67.500E	
40	3 camere	96.30m ²	79.58m ²	79.050E	82.025E	85.000E	
41	2 camere	68.90m ²	56.17m ²	59.055E	61.277E	63.500E	
42	3 camere	87.30m ²	70.90m ²	73.470E	76.235E	79.000E	

- ETAJ 9
- ETAJ 8
- ETAJ 7
- ETAJ 6
- ETAJ 5
- ETAJ 5
- ETAJ 3
- ETAJ 2
- ETAJ 1



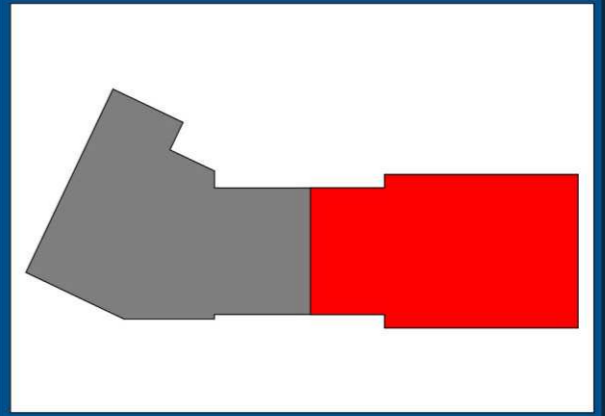


SCARA A
SCARA B



Nr	Nr camere	S construit	S util	Pret			Mentiiuni
				Integral	Transe 30%;40%;30%	Avans 20%	
43	2 camere	71.10m ²	58.35m ²	63.240E	65.620E	68.000E	
44	2 camere	69.60m ²	57.11m ²	60.450E	62.725E	65.000E	
45	2 camere	69.60m ²	56.48m ²	62.775E	65.137E	67.500E	
46	3 camere	96.30m ²	79.58m ²	79.050E	82.025E	85.000E	
47	2 camere	68.90m ²	56.17m ²	59.055E	61.277E	63.500E	
48	3 camere	87.30m ²	70.90m ²	73.470E	76.235E	79.000E	

- ETAJ 9
- ETAJ 8
- ETAJ 7
- ETAJ 6
- ETAJ 5
- ETAJ 5
- ETAJ 3
- ETAJ 2
- ETAJ 1





SCARA A
SCARA B



Nr	Nr camere	S construit	S util	Pret			Mentiiuni
				Integral	Transe 30%;40%;30%	Avans 20%	
49	2 camere	71.10m ²	58.35m ²	63.240E	65.620E	68.000E	
50	2 camere	69.60m ²	57.11m ²	60.450E	62.725E	65.000E	
51	2 camere	69.60m ²	56.48m ²	62.775E	65.137E	67.500E	
52	3 camere	96.30m ²	79.58m ²	79.050E	82.025E	85.000E	
53	2 camere	68.90m ²	56.17m ²	59.055E	61.277E	63.500E	
54	3 camere	87.30m ²	70.90m ²	73.470E	76.235E	79.000E	

ETAJ 9
ETAJ 8
ETAJ 7
ETAJ 6
ETAJ 5
ETAJ 5
ETAJ 3
ETAJ 2
ETAJ 1

