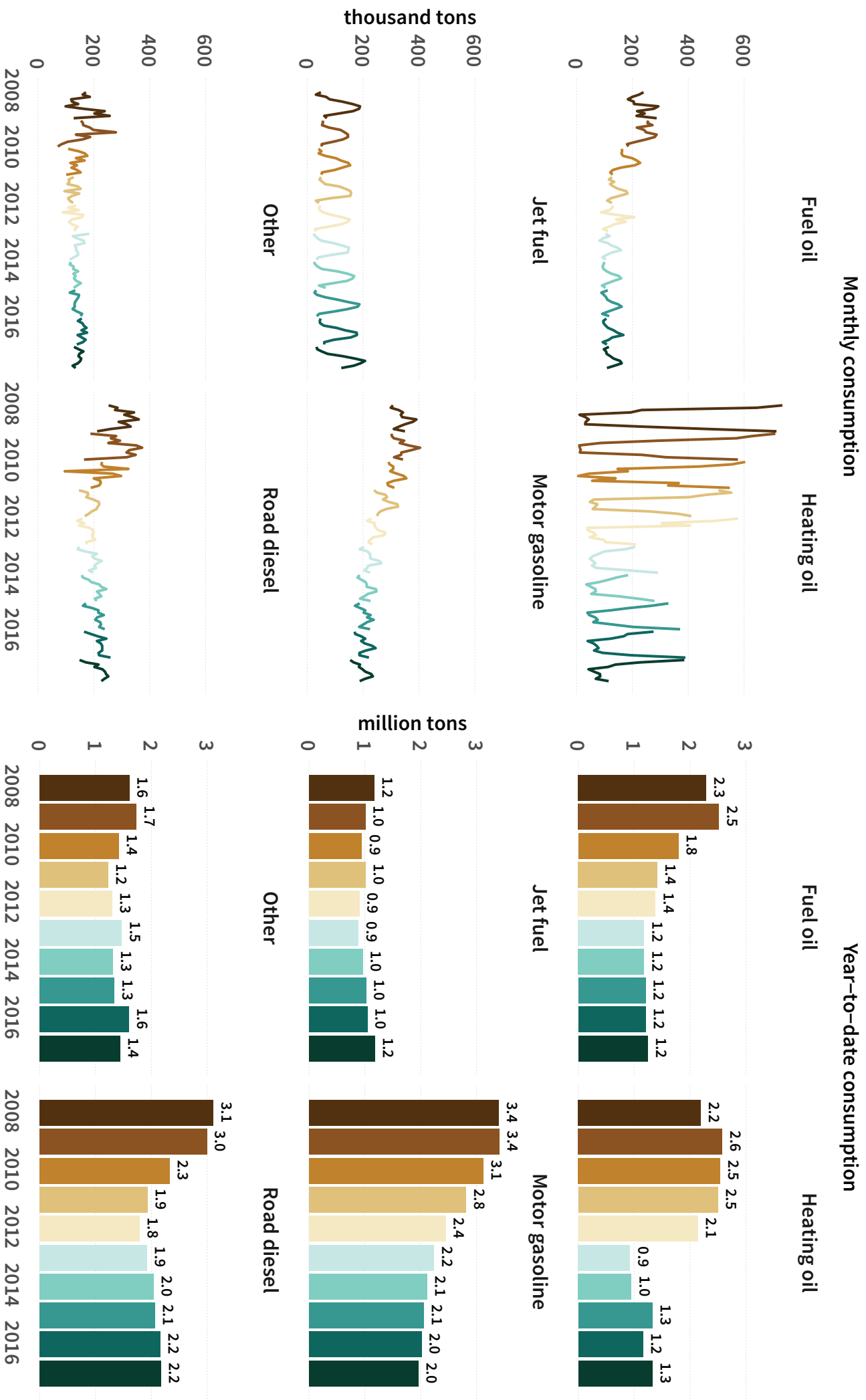
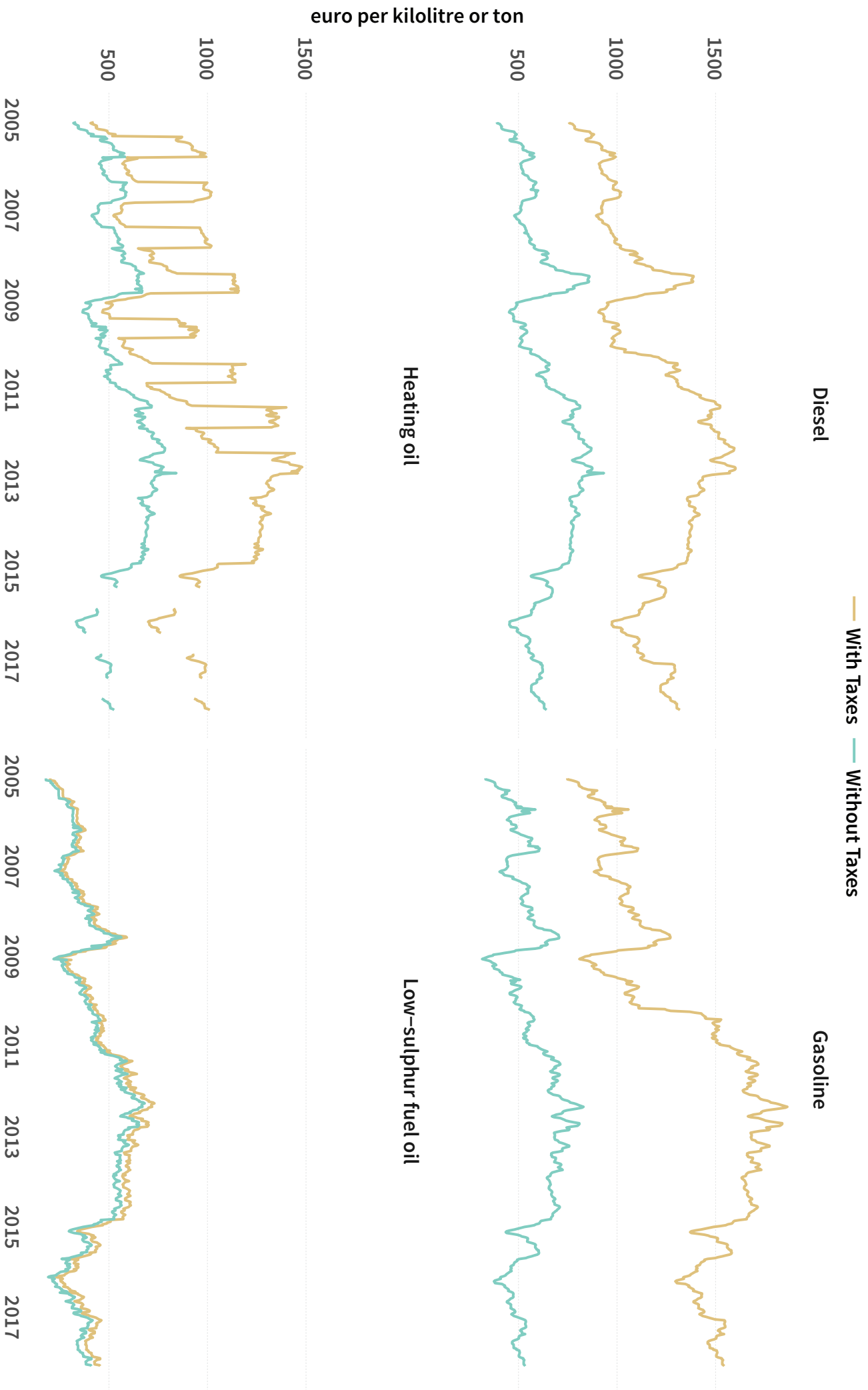




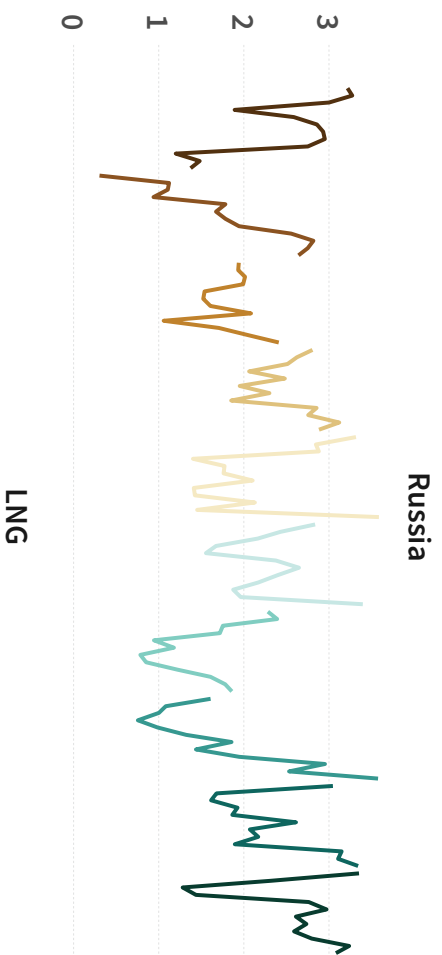
# **Greek energy market snapshot**

**January 2018**

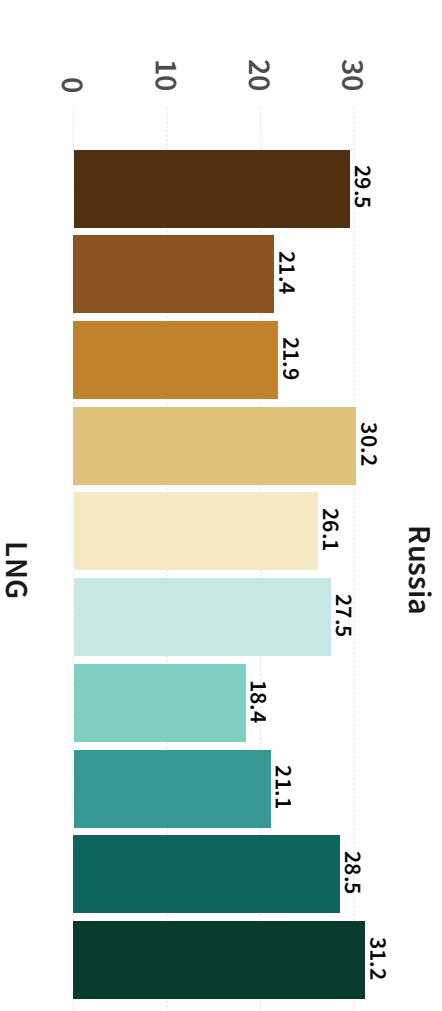




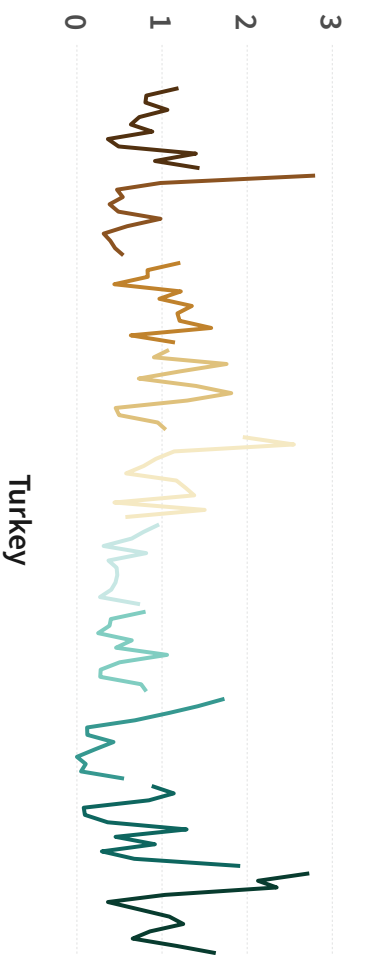
Monthly imports



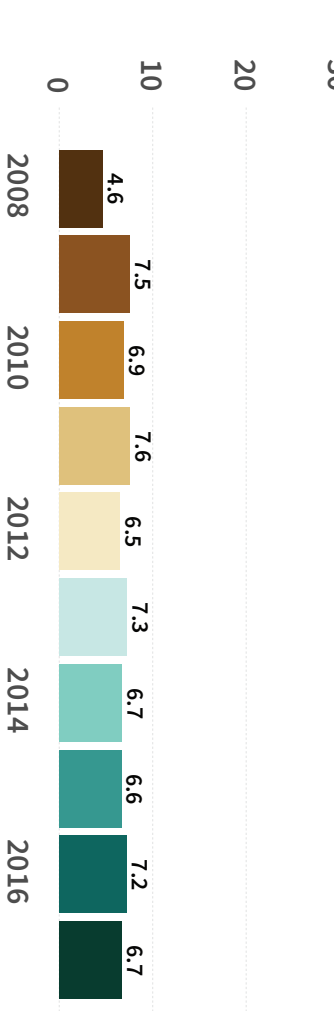
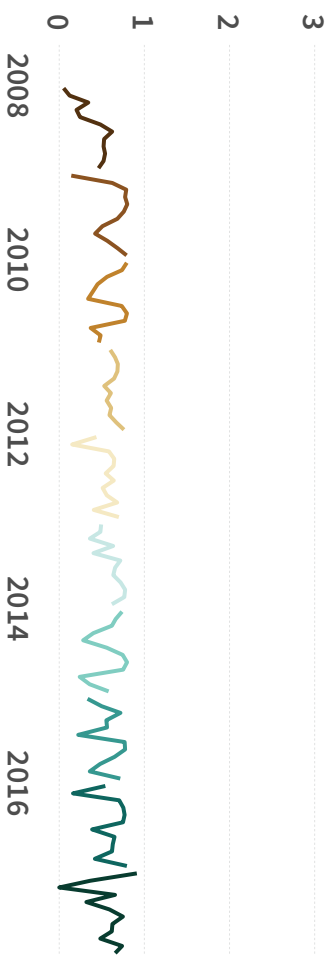
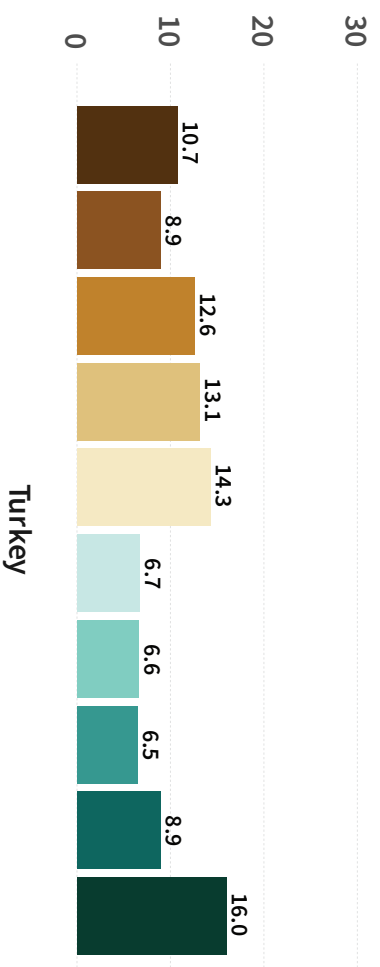
Year-to-date imports



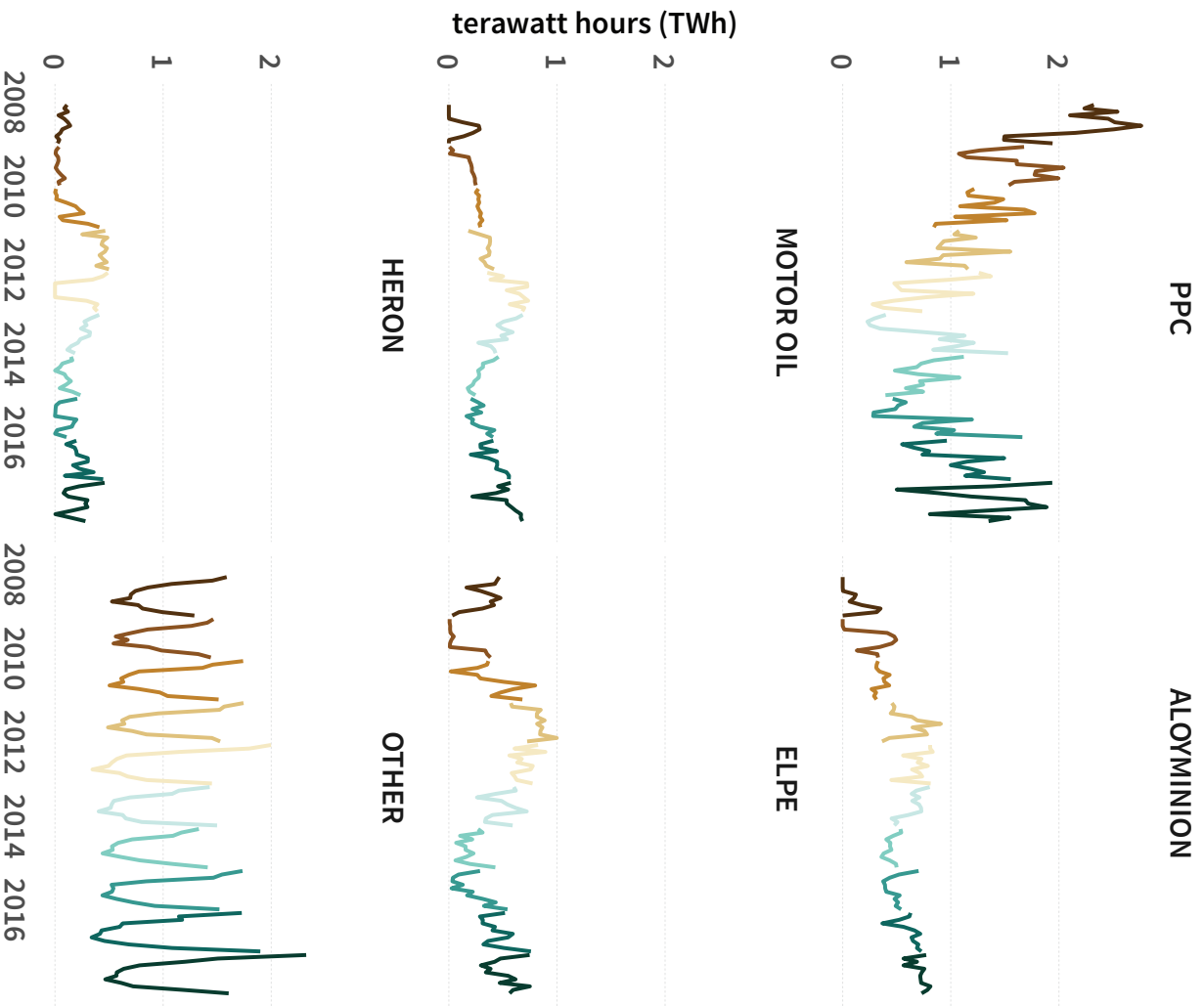
terawatt hours (TWh)



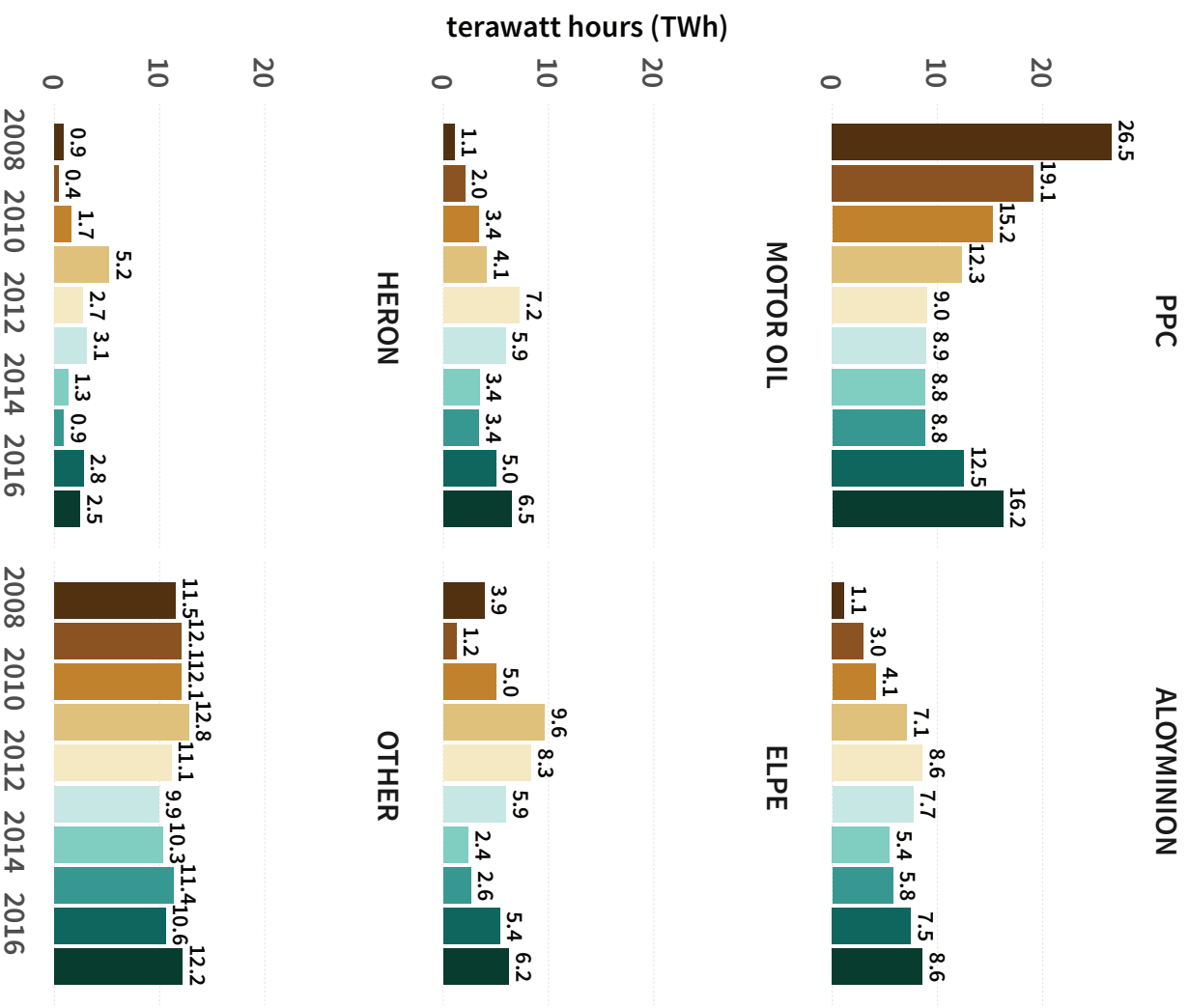
terawatt hours (TWh)

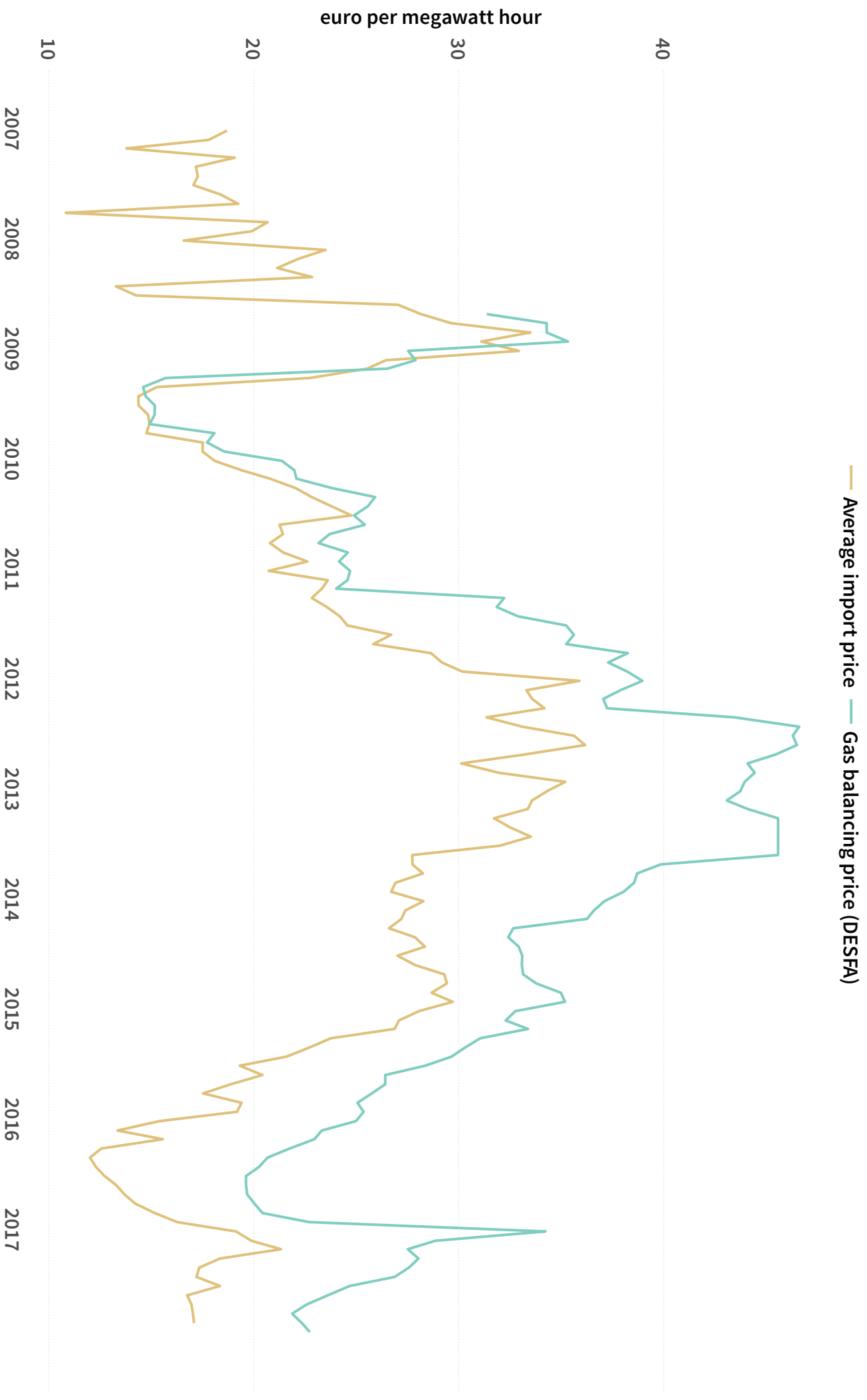


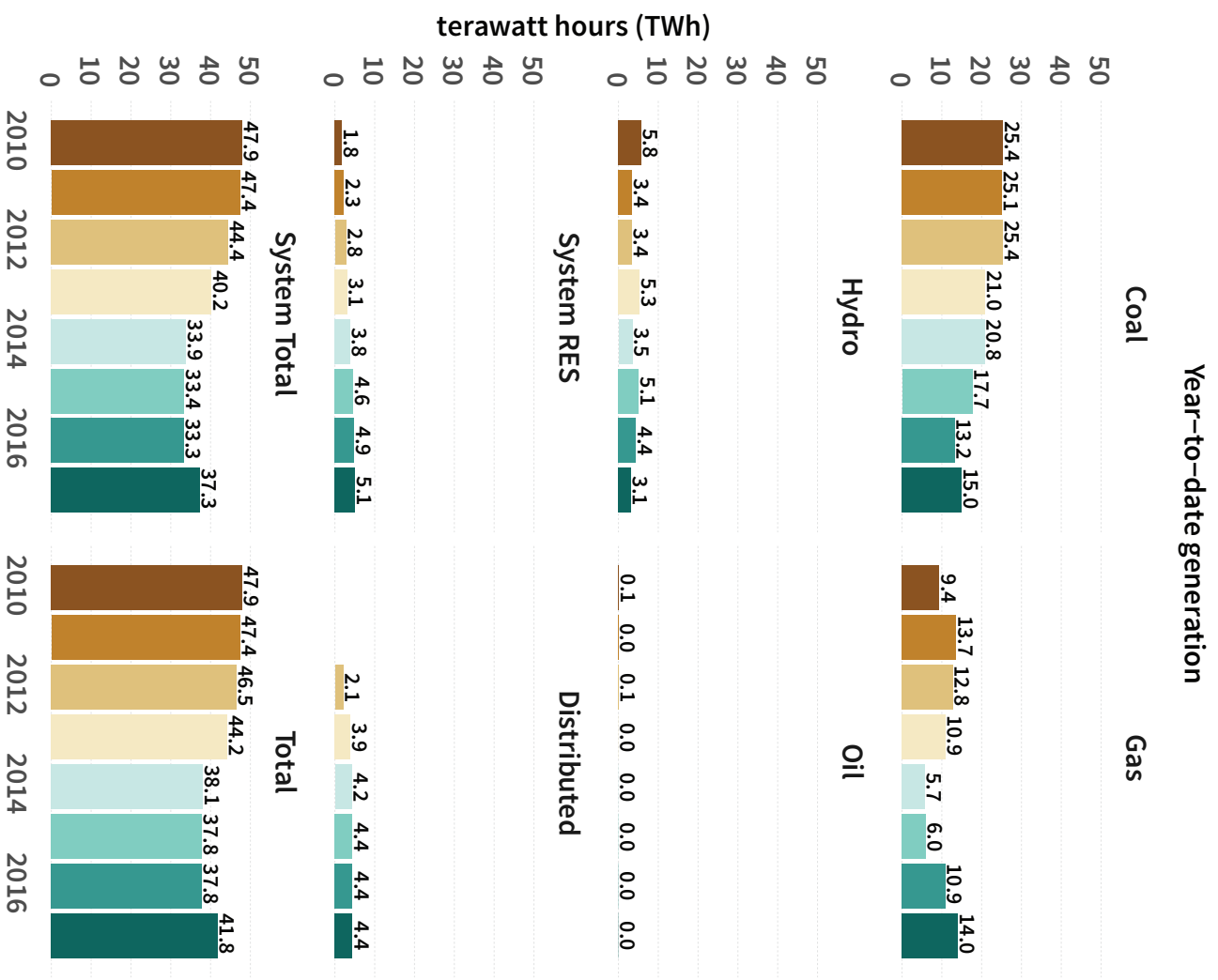
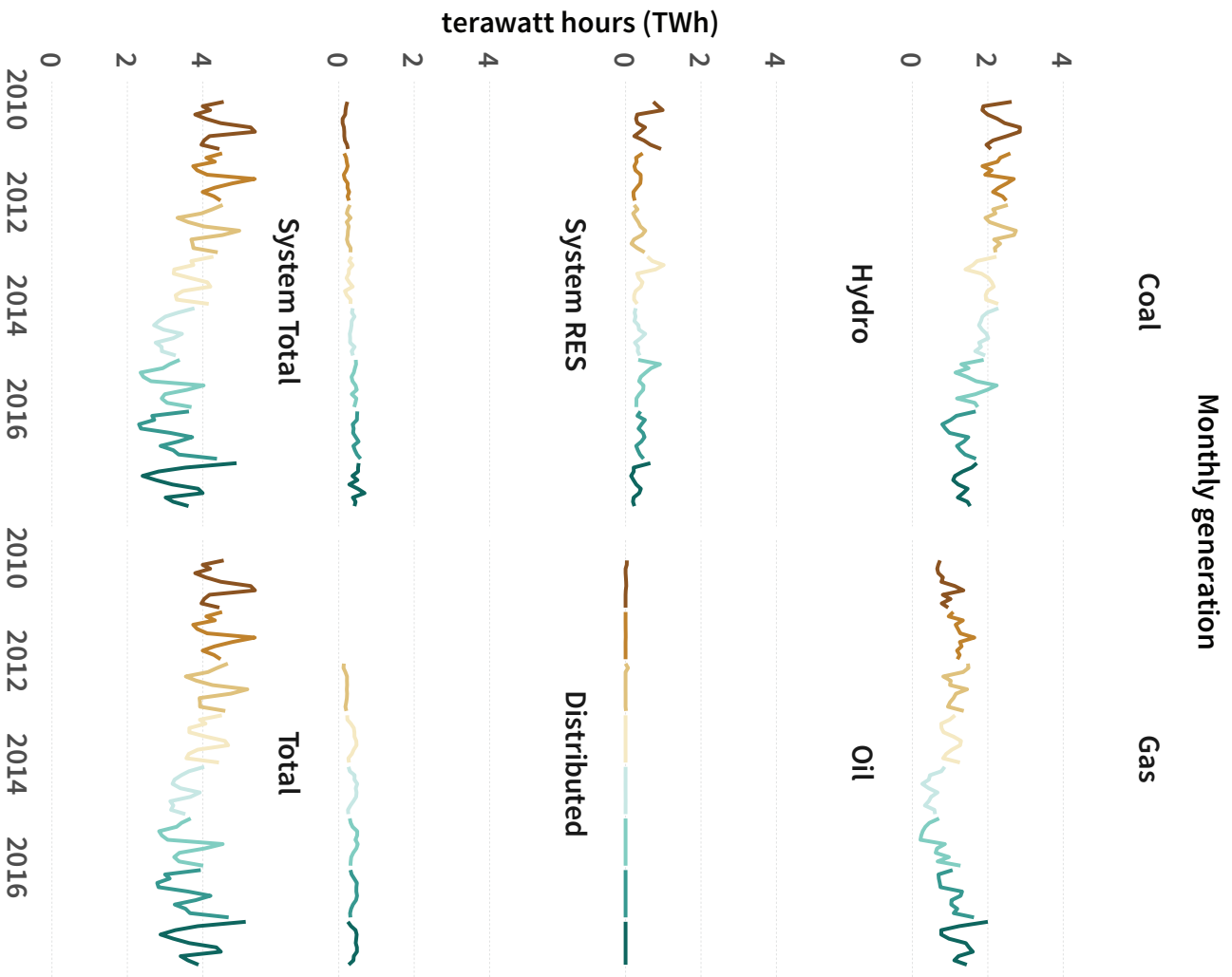
Monthly consumption

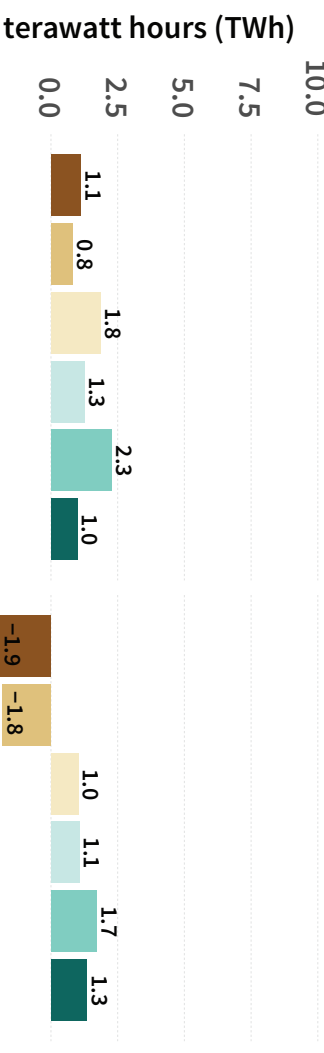
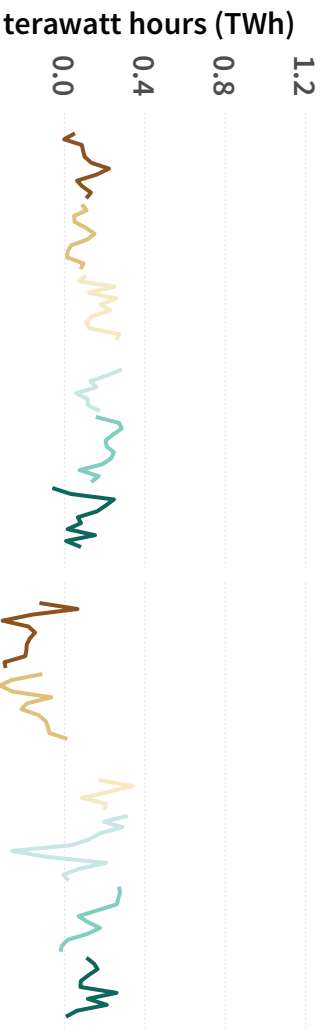
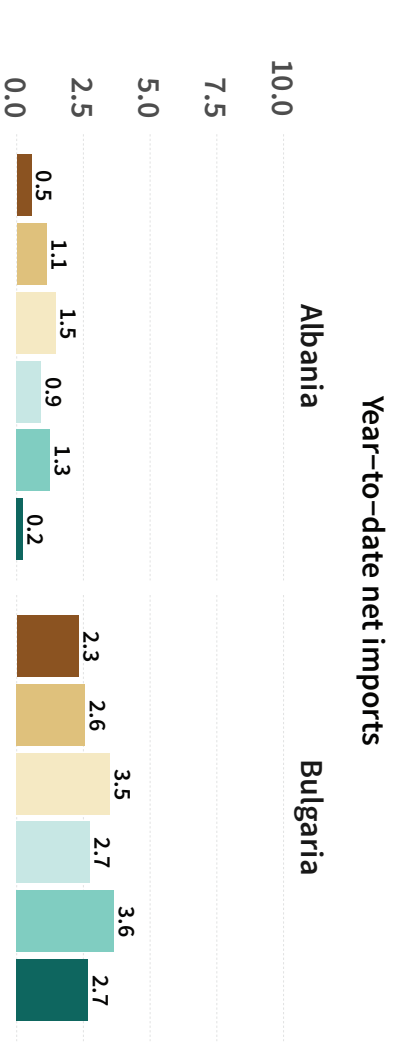


Year-to-date consumption

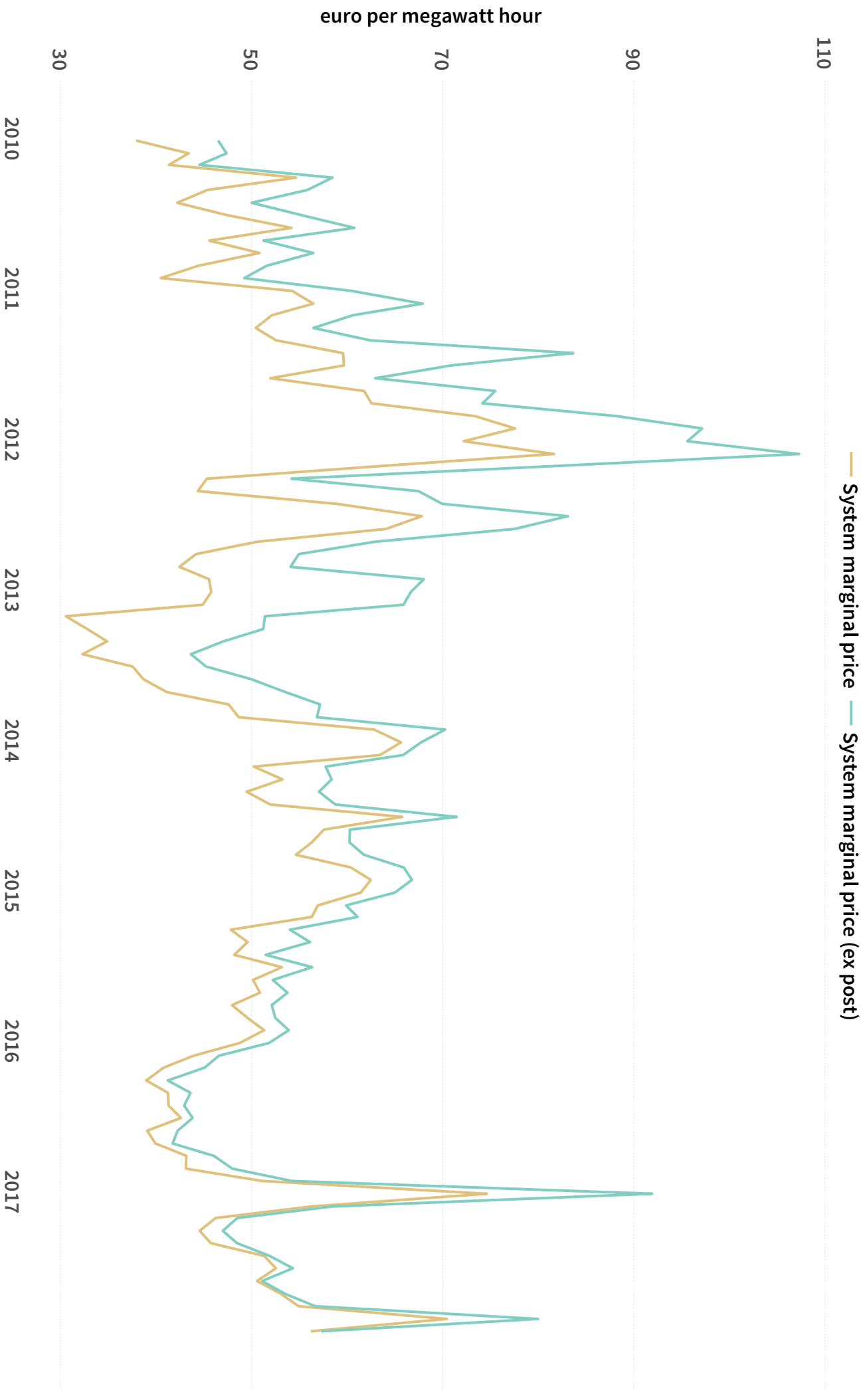












## Oil consumption

Eurostat, Supply and transformation of oil - monthly data (nrg\_102m)  
Parent URL: <http://ec.europa.eu/eurostat/data/database>  
File URL: [http://ec.europa.eu/eurostat/estat-navtree-portlet-prod/BulkDownloadListing?sort=1&downloadfile=data%2Fnrg\\_102m.tsv.gz](http://ec.europa.eu/eurostat/estat-navtree-portlet-prod/BulkDownloadListing?sort=1&downloadfile=data%2Fnrg_102m.tsv.gz)  
Other includes refinery gas, ethane, liquified petroleum gas (LPG), aviation gasoline, other kerosene, gasoline type jet fuel, naphtha, petroleum coke, other products. All fuels include blending with bio components. Jet fuel refers only to kerosene jet fuel (gasoline type jet fuel shown in other).

## Oil prices

European Commission, Weekly oil bulletin  
Parent URL: <https://ec.europa.eu/energy/en/data-analysis/weekly-oil-bulletin>  
File URL: [http://ec.europa.eu/energy/observatory/reports/Oil\\_Bulletin\\_Prices\\_History.xls](http://ec.europa.eu/energy/observatory/reports/Oil_Bulletin_Prices_History.xls)

## Gas balance

DESFA, Historical Data of Natural Gas Deliveries / Off - Takes  
Parent URL: [http://www.desfa.gr/?page\\_id=2790&lang=en](http://www.desfa.gr/?page_id=2790&lang=en)  
File URL: <http://www.desfa.gr/wp-content/uploads/2017/12/Flows.xlsx>  
For import locations: AGIA TRIADA is LNG, SIDIROKASTRO is Russia, and KIP1 is Turkey.  
For domestic consumption: PPC includes ALLVERI, KERATSINI, KOMOTINI, LAVRIO, MEGALOPOLIS. ALOYMINION includes ALOYMINION, ALOYMINION II and ALOYMINION III. ELPE includes ELPE, ELPE HAR, and THISVI. HERON includes HERON II and HERONAS. MOTOR OIL includes MOTOR OIL and MOTOR OIL II. All other exit points grouped under OTHER.

## Gas prices

DESFA, Daily gas balancing price  
Parent URL: [http://www.desfa.gr/?page\\_id=2981&lang=en](http://www.desfa.gr/?page_id=2981&lang=en)  
File URL (2017): [http://www.desfa.gr/wp-content/uploads/2017/03/2017\\_EN\\_%CE%97%CE%A4%CE%91%CE%95.xlsx](http://www.desfa.gr/wp-content/uploads/2017/03/2017_EN_%CE%97%CE%A4%CE%91%CE%95.xlsx)  
Import prices calculated from Eurostat, Com Ext database (available from <http://ec.europa.eu/eurostat/data/database>). Total calculated by adding all values under codes 27111100 and 27112100. Volumes are reported in terajoules; conversion from terajoules to megawatt hours based on a 1 KWh = 3,600 KJ rate.

## Electricity balance

ADMIE, Electricity market report  
Parent URL: <http://www.admie.gr/deltia-agoras/miniaia-deltia-energeias/>

## Electricity prices

ADMIE, System marginal prices  
Parent URL: <http://www.admie.gr/leitoyrgia-dedomena/leitoyrgia-agoras-ilektrikis-energeias/anafores-dimosieyseis-agoras/>