



Galaxy 3003 Canal
2003 3003 Length 3.00m Sec-3



Galaxy 3003



Canal

ZG03 3003 Length:3.00m Sec:3



COMPETITION DE LUXE

COMPETITION DE LUKE

HIGH MODULUS CARBON CONSTRUCTION m.290 s.3

ATTENZIONE: materiale altamente conduttore di elettricità



FISH LAKE



FISH LAKE

- LENGTH m.4.00
- CLOSED cm.112
- WEIGHT gr.230
- CASTING WEIGHT gr.10-30
- SECTIONS n.4



ATTENZIONE AI CAVI DELL'ALTA TENSIONE
E AI VIOLENTI TEMPORALI
LA CANNA È DI UN MATERIALE ALTAMENTE
CONDUTTORE DI ELETTRICITÀ





ULISSE HT

HIGH MODULUS CARBON
GR. 40-80 UNBREAKABLE

400



HIGH MODULUS CARBON
GR.40-80 UNBREAKABLE

closed cm. 116-weight or 248 sections 4

44000



Strikeforce

IMPERIAL CARBON

SP-PRO

ALLROUNDER 40

Strikeforce

DESIGNED & ENGINEERED BY DAIWA

SF-AR40 DESIGNED by DAIWA



FISH LAKE

MODEL: 10-11
WEIGHT: 6.200
CASTING WEIGHT: 10-30
SECTION: 3.4





FISH LAKE

- LENGTH m.4.00
- CLOSED -cm.112
- WEIGHT gr.230
- CASTING WEIGHT gr.10-30
- SECTIONS n.4



ATTENZIONE AI
E AI VIOLENTI TI
LA CANNA È DI
CONDUTTORE L



IGNEST
EXCLUSIVO

Imperial Lago

AR 1420

0360

CARBONIO ALTA RESISTENZA

DYNEEMA

SPECIALE DA MULINELLO

IGI
ESCI

Imperial Sage

A2R

0360



TITANIC 380

High Sensitive Carbon Telescopic Pole-Fast Tip Action-mt. 3.80 x 5

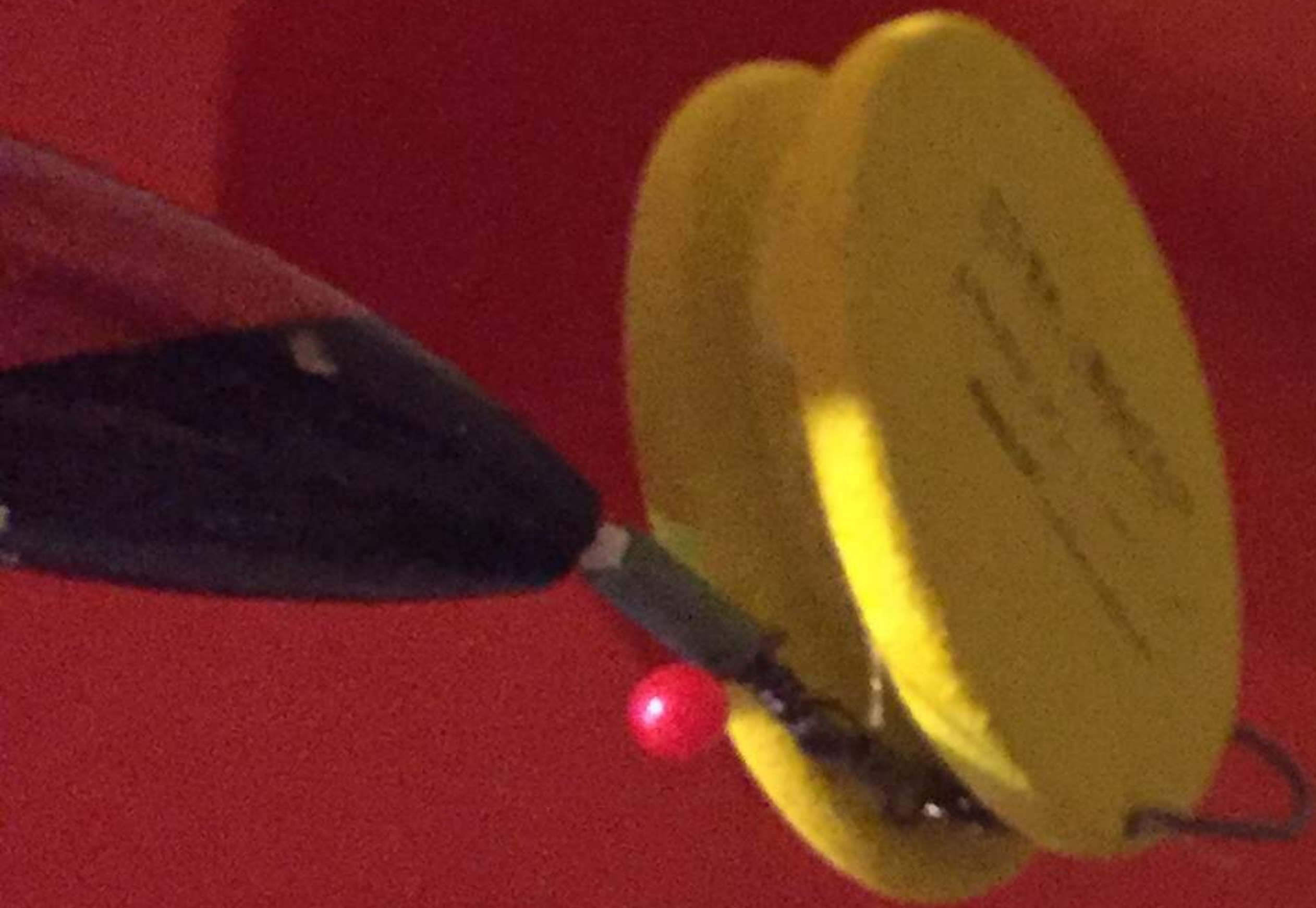


TITANIC 380


Carson

TITANIC 380

C A R B O N

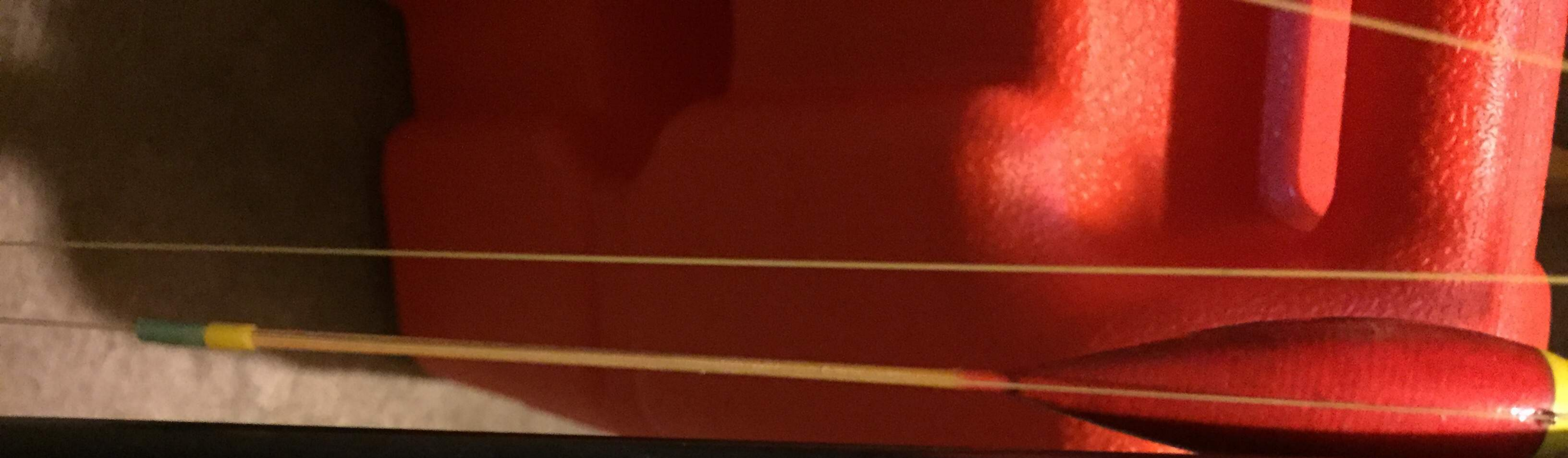




trota

M 4,30





AZIONE PARABOLICA DA FONDO

act



SERIE M

25





HI-SPEED 6:1

STILSTAR
XS50

2BALL BEARINGS

RIGHT-LEFT-RET-RIEVE

STILSTAR
WHITE



M (No) 0.35(5) 0.40(6) 0.45(8)
M 175 135 115

HI-SPEED 6:1

FARINER



SILSTAR 302

SILSTAR[®]

BFPEX 302

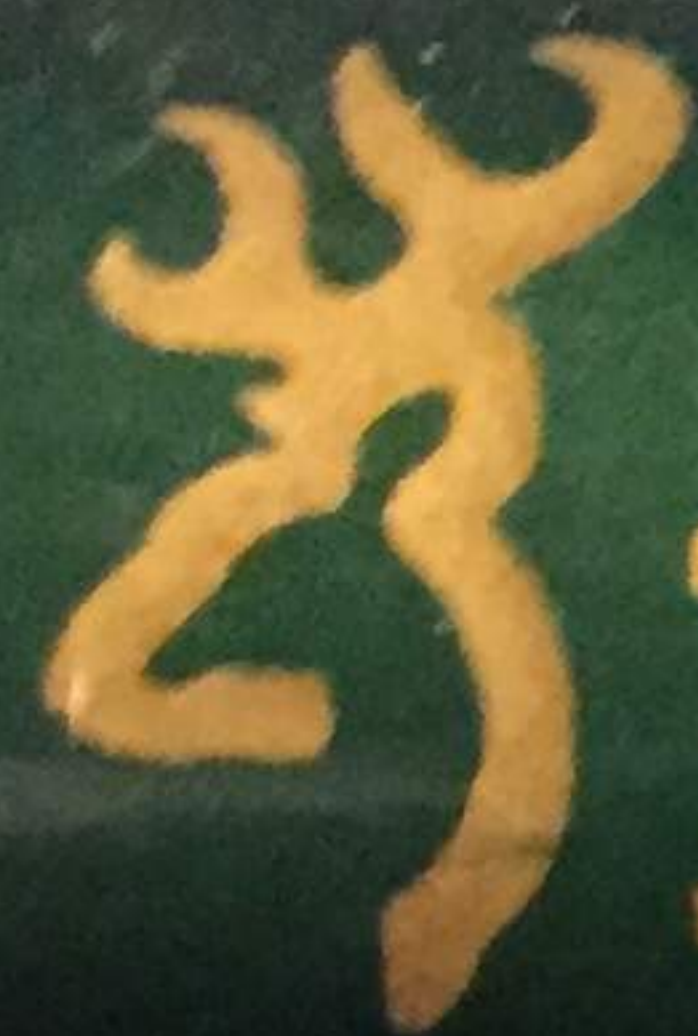
Nr: 3219-302 Sec:5 Length:3.00M Action: A40-80

MILSTAR® BFPBX 302

Nr: 3219-302 Sec: 5 Length: 3.00M Action: A40-80







BROWNING

SPARROW 42

Cod 178378 Telescope 1-3/20 Sections

Standard Power 30' 1/2" Barrel



WYNNING


SPARROW 42

Cod. 178378 - Telescop L 4.20 m - 7 Sections
Casting power 30 g - Carbon







 **sawfish**
mod. 800 *540x6*







1 BALL BEARING

RD-10

HG

LINBEFFE
the best for fishing

GEAR RATIO 5.5:1
LINE CAPACITY mm/M



1 BALL BEARING

RD-10

HG

LONG CAST SPOOL

RD-10



VIGOR®

GRD-10

LONG CAST SP...





YAPHIT
EL SEA

COBRA

CB240

CB240

LONG CAST

150 0 40/100

Lbs/Yds

5/210 10

LONG CAST SPOOL

210 10 155 14/125

CB240
OCEANIC





Karbonia

7m 3.60



IN THE
FISHING

Karboonia

mm 3,501







HL2000

GEAR RATIO 5.2:1

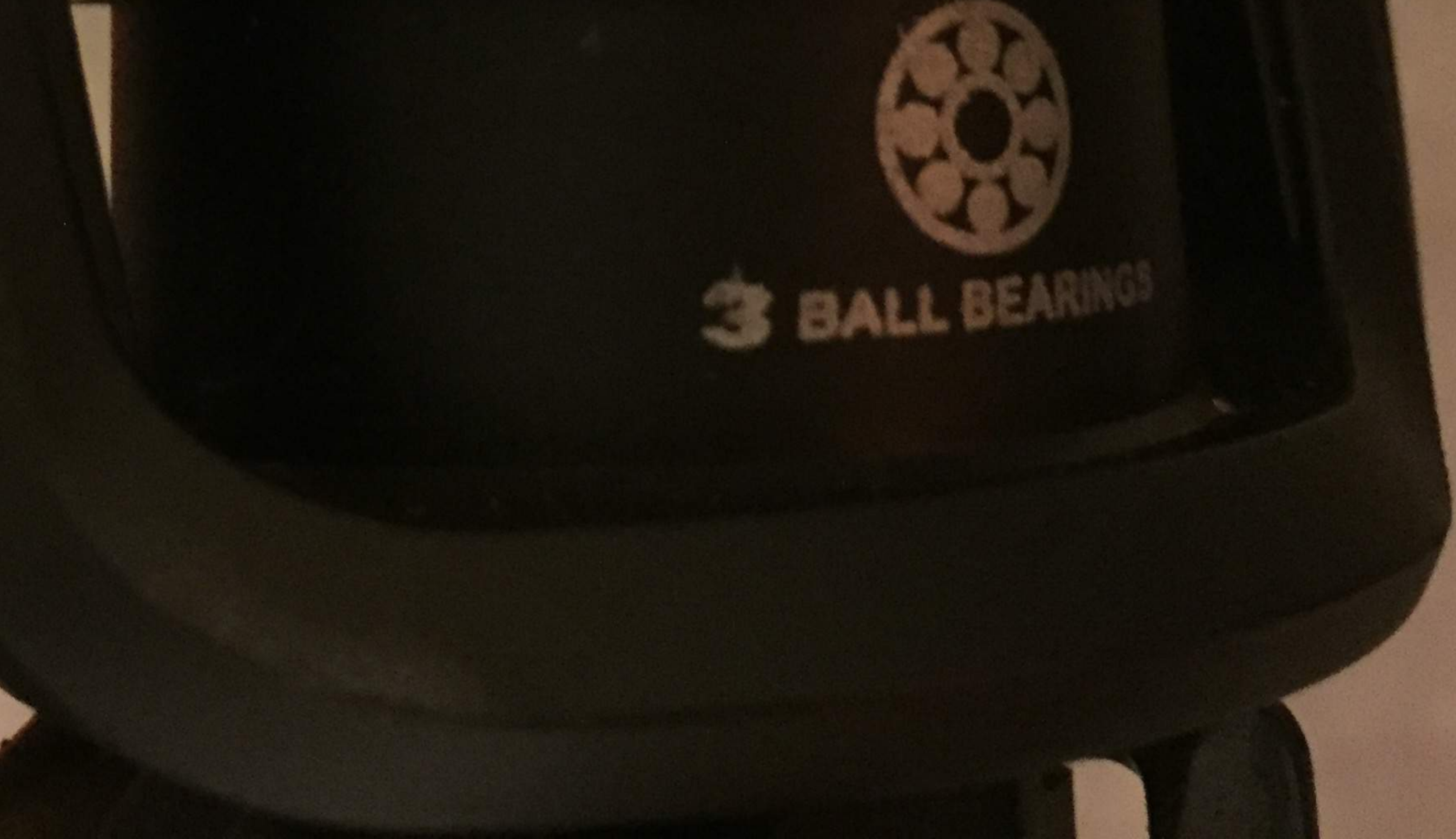
No. m 1



No.-m 1.5/219 2.0/137 3.0/96 HE



096 HAI Lang mm/M 0.18/245 0.2



3 BALL BEARINGS



VICENTINA 5 x 320
SPECIALE PER TROTA
ART. 5121



VICENTINA 5 x 320
SPECIALE PER TROTA
ART. 5121



4000FB
SHIMANO

HYPERLOOP



LINE CAP.(≈)
0.25-260 · 0.30-180 · 0.35-130 · 0.40-100
(yds.) 8-240 · 10-200 · 12-160

HYPERLOOP

SHIMANO
BALL BEARING





fenwick



M 243645



AFT

FF755 7½' 3⅛ oz.
AFTMA Fly Line No. 5



Daiwa SURFCASTER-92H



Daiwa

SURF CASTER-42H

TOTAL LENGTH 114.2cm CLOSED LENGTH 118cm SECTIONS 4cm CASTING WEIGHT 105g

KR CASIER-4LN

TOTAL LENGTH:4.2m CLOSED LENGTH:118cm SECTIONS:4pcs CASTING WT.:100-200g



DIAMOND
MI-CON No. 305 TB

TW

BAC

TWIST BACK SYSTEM

DIAMOND S.S.

MI-CON
No. 305 TB

DIAMOND

15 14 13 12 11



MI-CON
NO. 305TB
OHMORI S.S.
DIAMOND
TWIST BACK SYSTEM

HARD RETRIEVE
RIGHT FOOT
LEFT FOOT

LINE TEST (NO.) 6 8 10 (M/M) 0.40 0.45 0.50
CAPACITY (M) 310 240 190 (M) 310 240 200



DREVER®



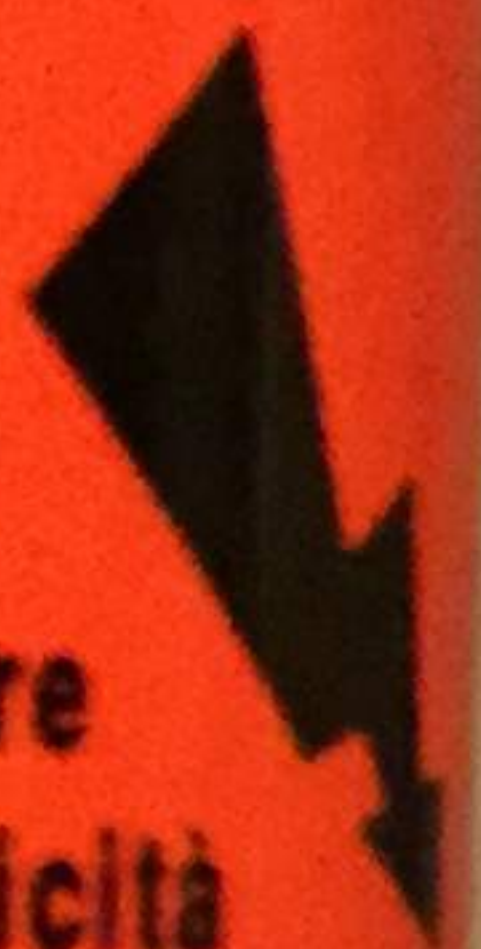
ACTION
carbonio

MADE IN ITALY





Materiale
 Conduttore
 di Elettricità



mt. 4,50

gr. 20-80





lb. (kg) - yds. (m)
12(5.5) - 360(330)
14(6.4) - 290(270)
17(7.7) - 220(205)
20(9.1) - 170(155)

SPOOL DIA. (mm) 56/61

GRAPPHITE

BR2650
GEAR RATIO 4.9:1

Daiwa

BR2650



3600
4500
5400

ADMIRAL

SERIE
SURFCASTING

NOVA

M. 3.60

M. 4.50

M. 5.40



Daiwa
MARK OF PRECISION

J-13

ENGINEERED FOR ACTION

A QUALITY PRODUCT OF
lb.-yds. (kg.-m) 8-20





m 2,90





Garcia Mitchell 410

HIGH SPEED



D·A·M[®]

«*Allround Super*»

Art.-Nr.: 2385 240

A.F.T.M. 6-7

Länge: 2,40 m

Aktion: 2,5