

Anomaly

110 meters

120 meters



SCALE:  = 10 meters

Asylum

120 meters

90 meters




SCALE:  = 10 meters

Bastion

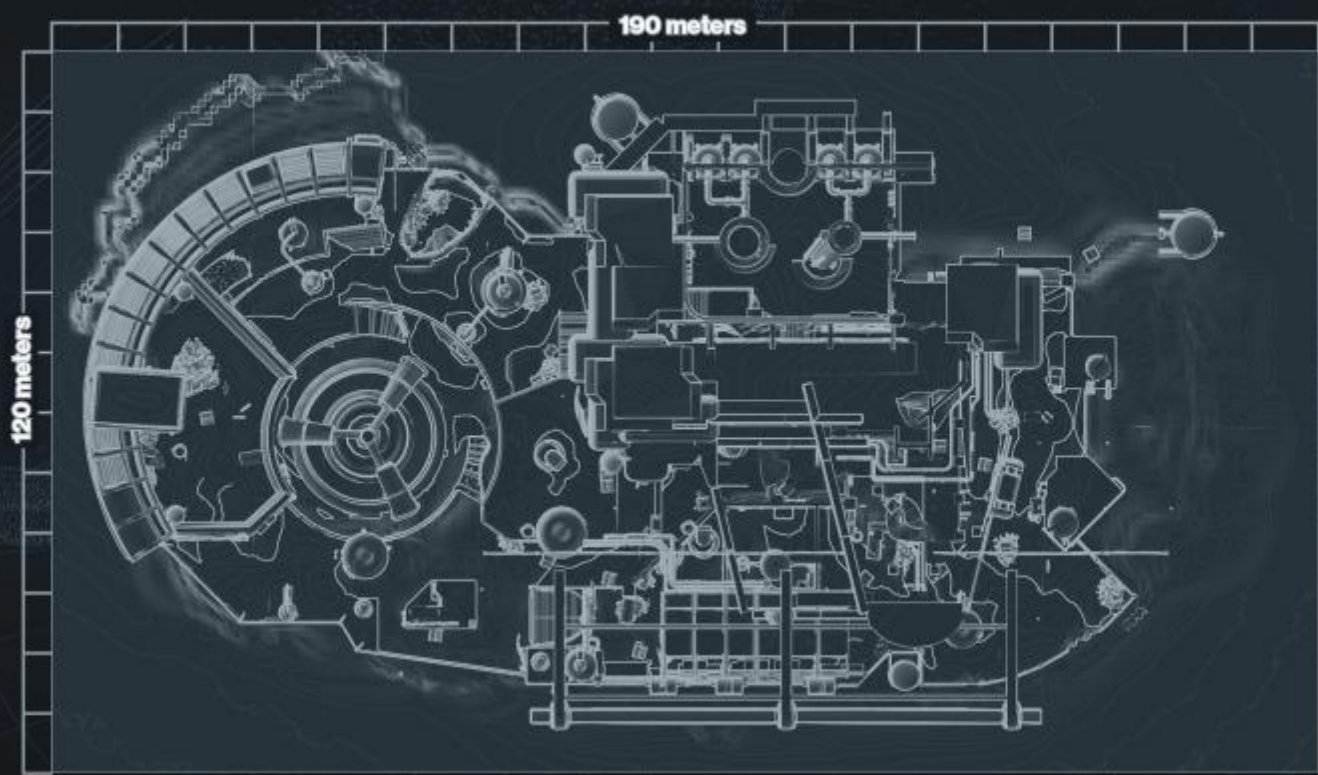
200 meters

250 meters



SCALE:  = 10 meters

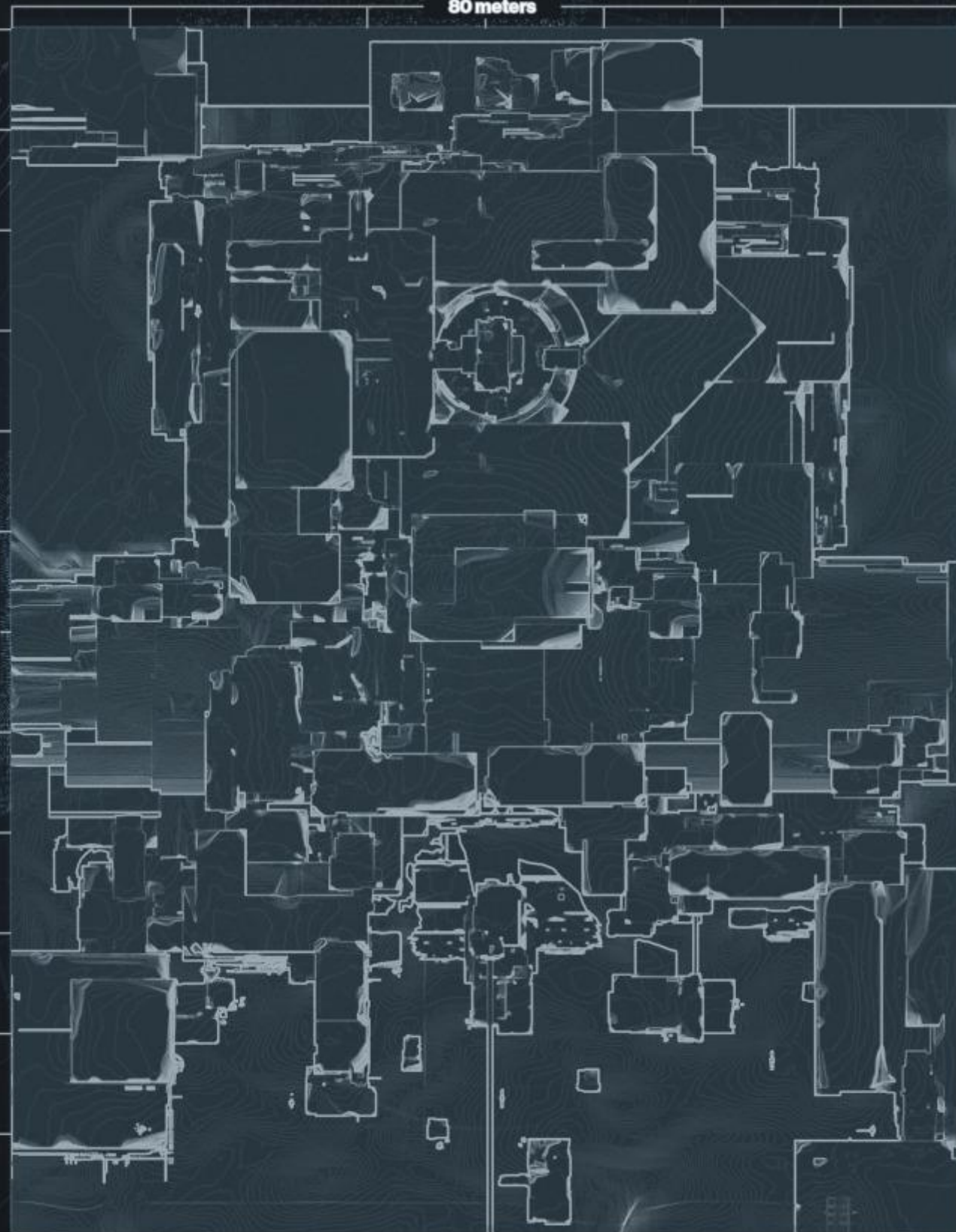
Blind Watch

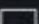


Burning Shrine

80 meters

120 meters

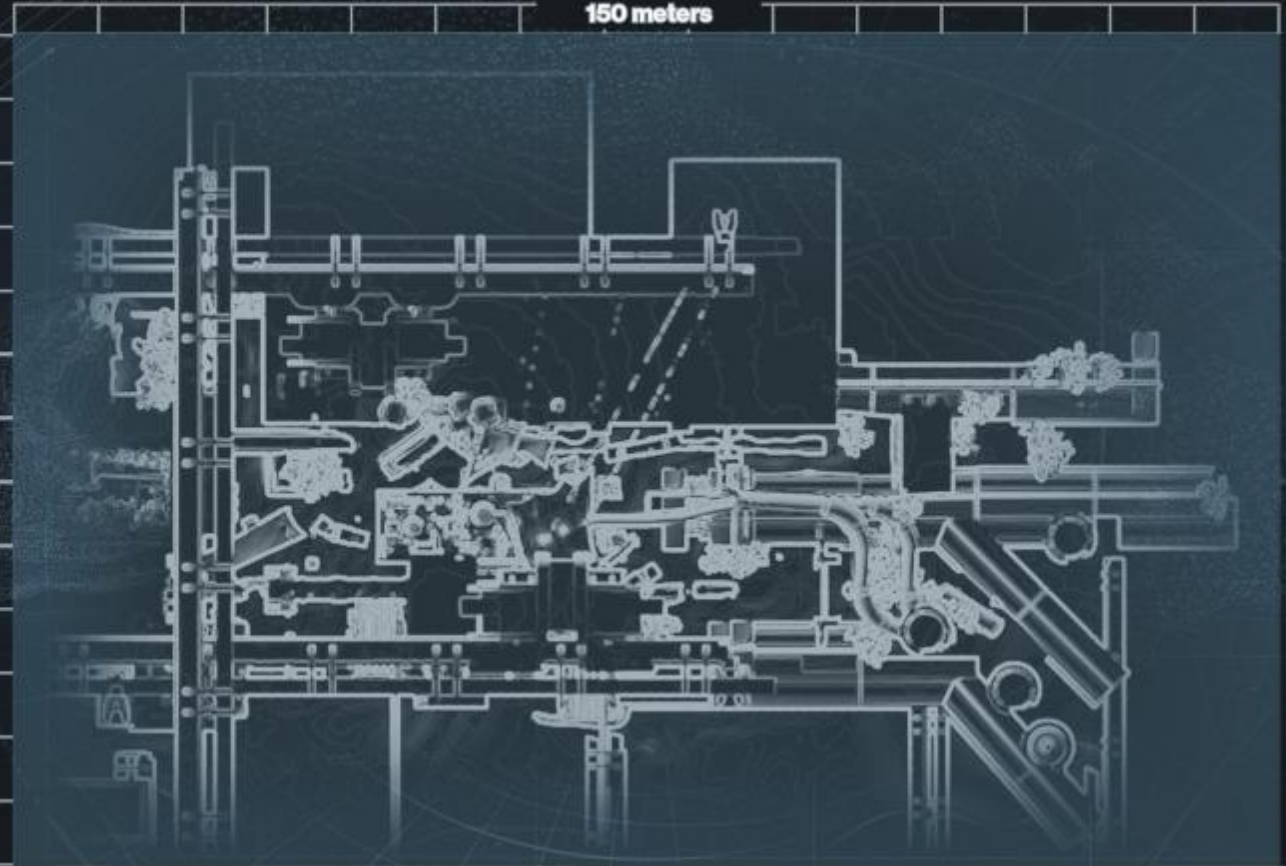



SCALE:  = 10 meters

Exodus Blue (timed PlayStation exclusive)

150 meters

80 meters




SCALE:  = 10 meters

Firestore Delphi

120 meters

110 meters



SCALE:  = 10 meters

First Light



Rusted Lands

160 meters

200 meters



SCALE:  = 10 meters

Shores of Time

190 meters

100 meters




SCALE:  = 10 meters

Twilight Gap

160 meters

90 meters



SCALE:  = 10 meters