

T500RS

FAN REPLACEMENT INSTRUCTIONS (WITH THE NEW VERTICAL FAN / 60 x 60 x 20 mm)

Required tools: cross-slot screwdriver + cutting pliers

Estimated time: 15 min.

Part ref.: 5076053 – T500 RS Fan V3 60x60x20 mm



A) Removal

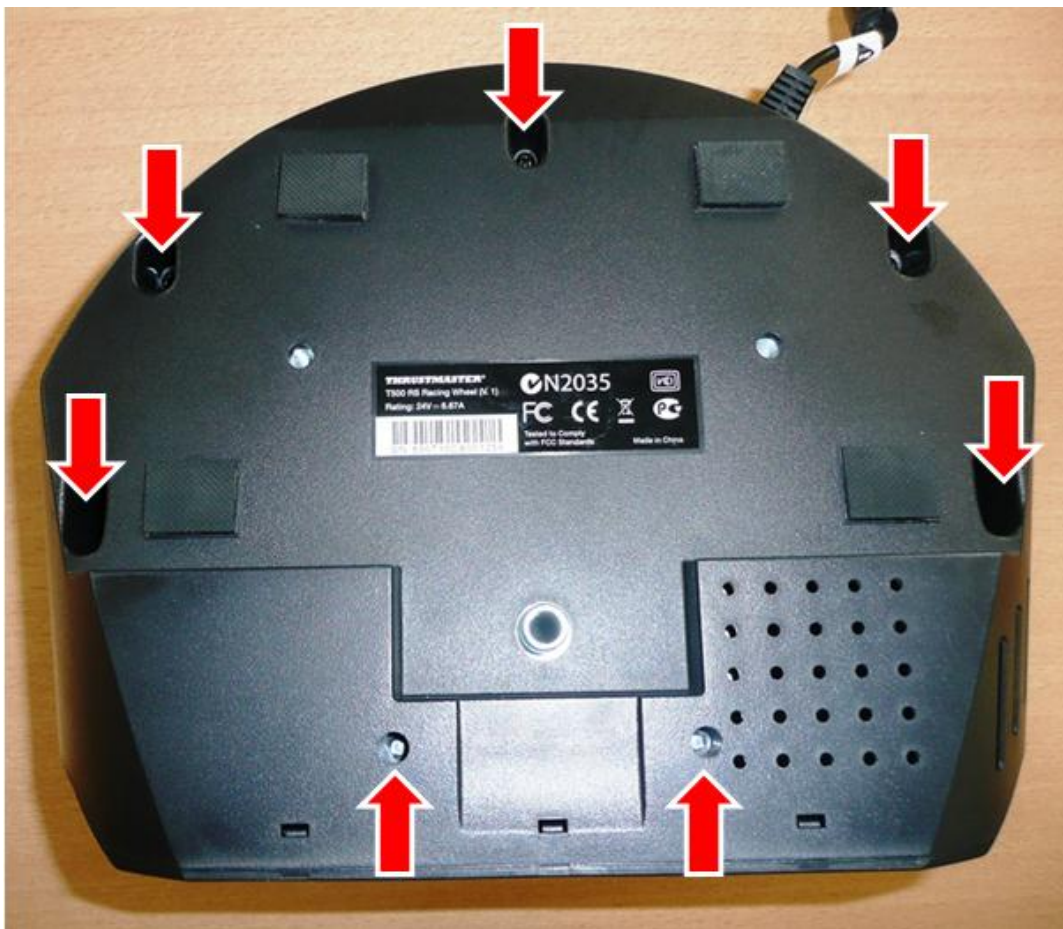
- 1) Disconnect the USB cables from the racing wheel and the pedal base.
- 2) Remove the detachable wheel, as shown in this video:
<http://www.youtube.com/watch?v=I7cKX6F1ah0>
- 3) Remove the plastic cover plate, located at the top of the racing wheel's cover.



- 4) Remove this little silver screw and the nut (make sure the nut does not fall inside the wheel assembly; if it happens, you can always retrieve it once you have opened up the wheel).

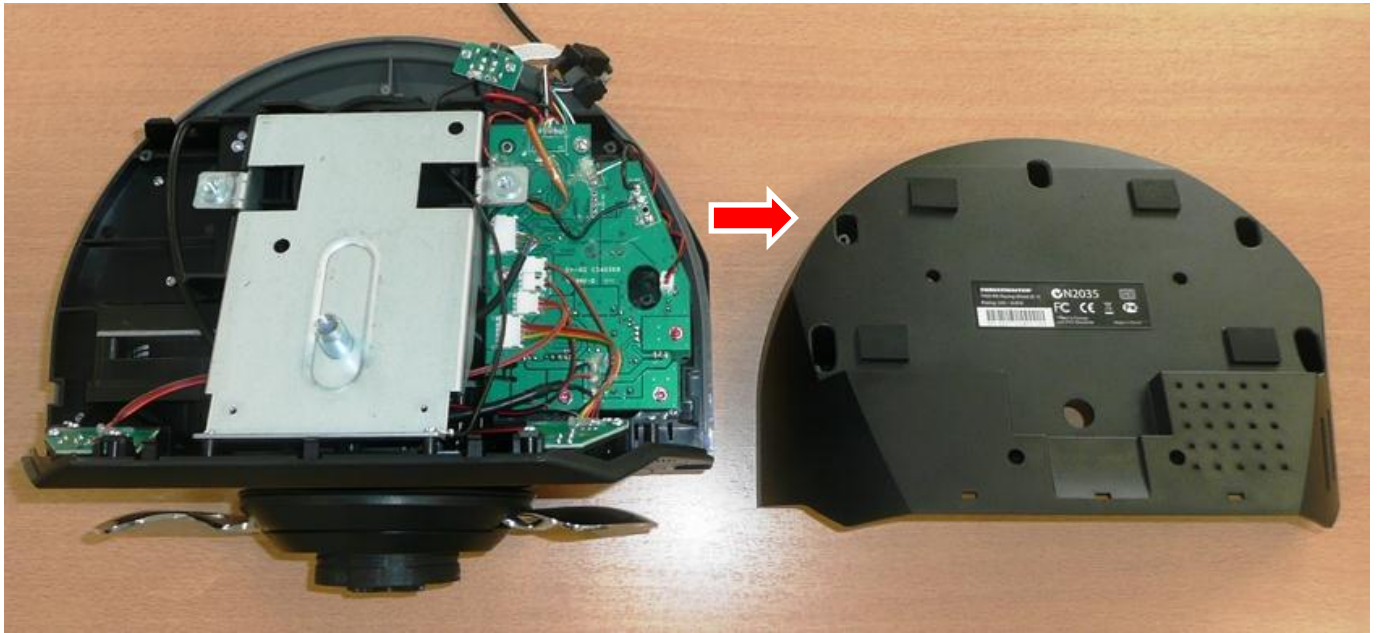


- 5) Remove the 7 screws located on the lower cover.
There are 5 black screws in the upper section and 2 silver screws in the lower section.

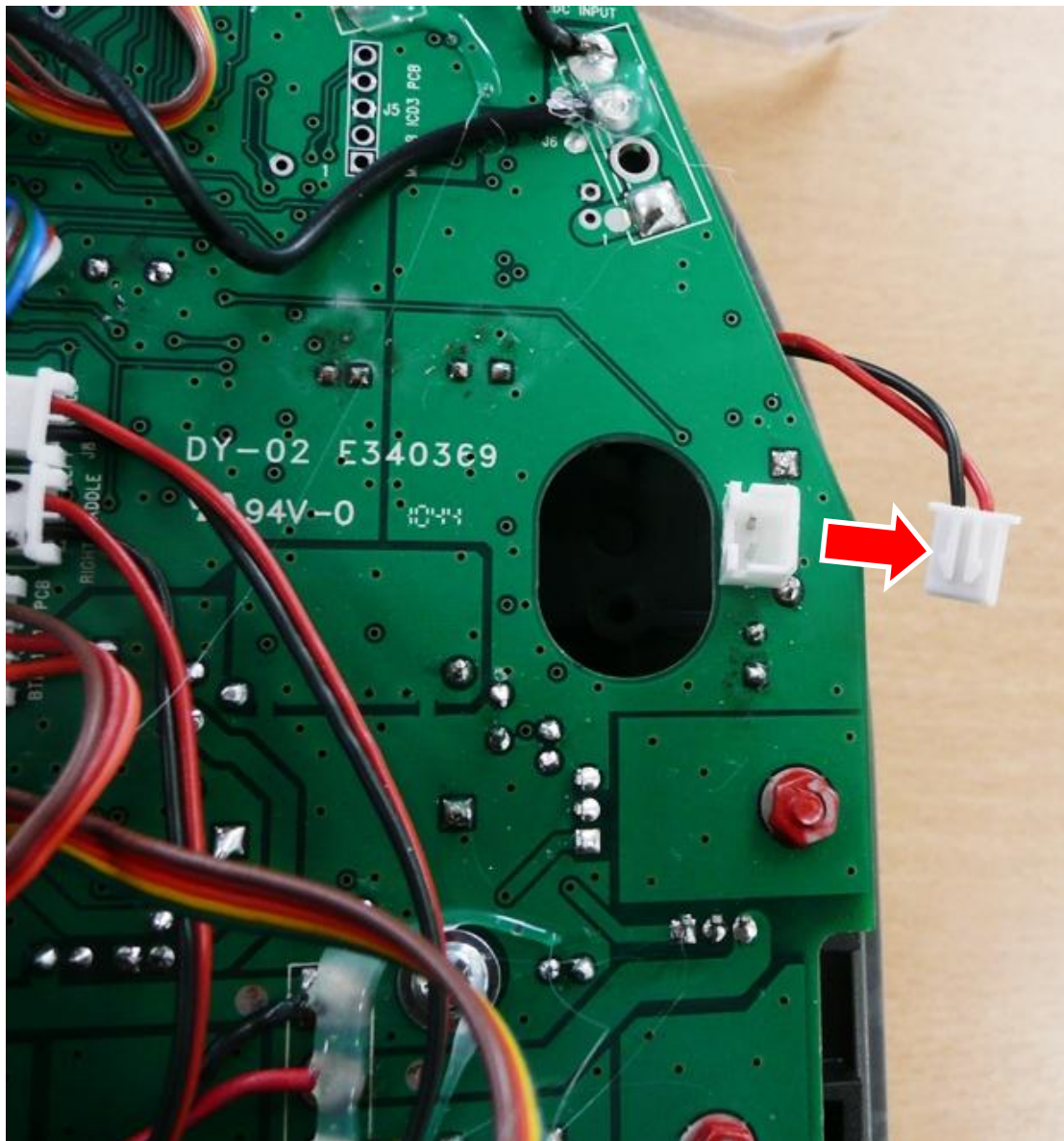


(Leave the screws in their holes; this will enable you to locate them more easily.)

- 6) Remove the lower cover entirely (be careful to remove the USB cable and pedal base connectors from the cover).



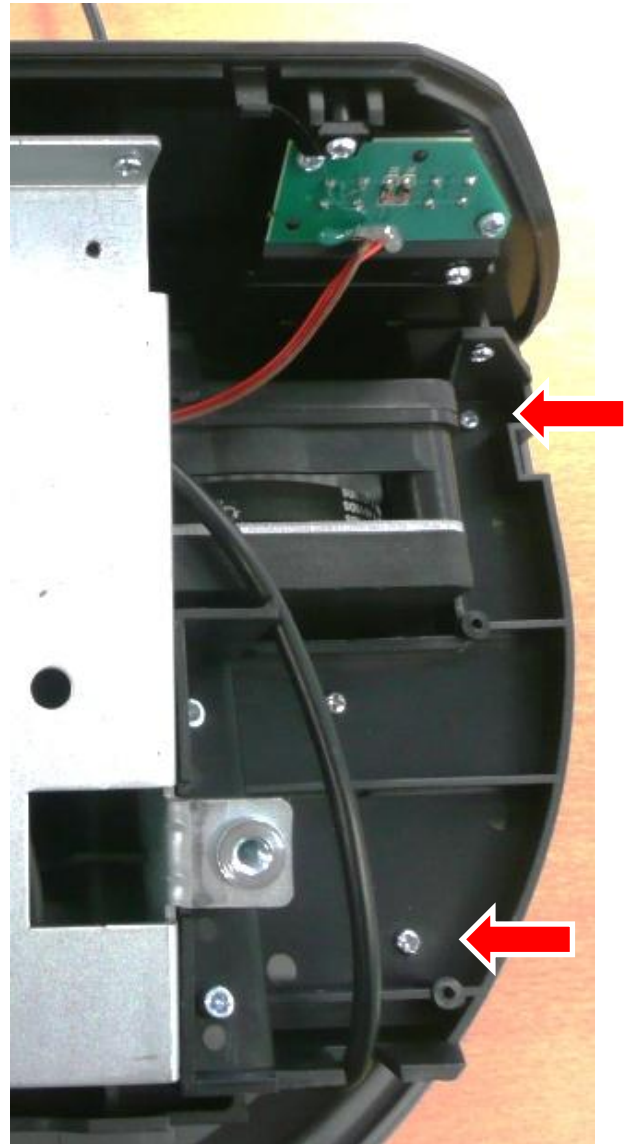
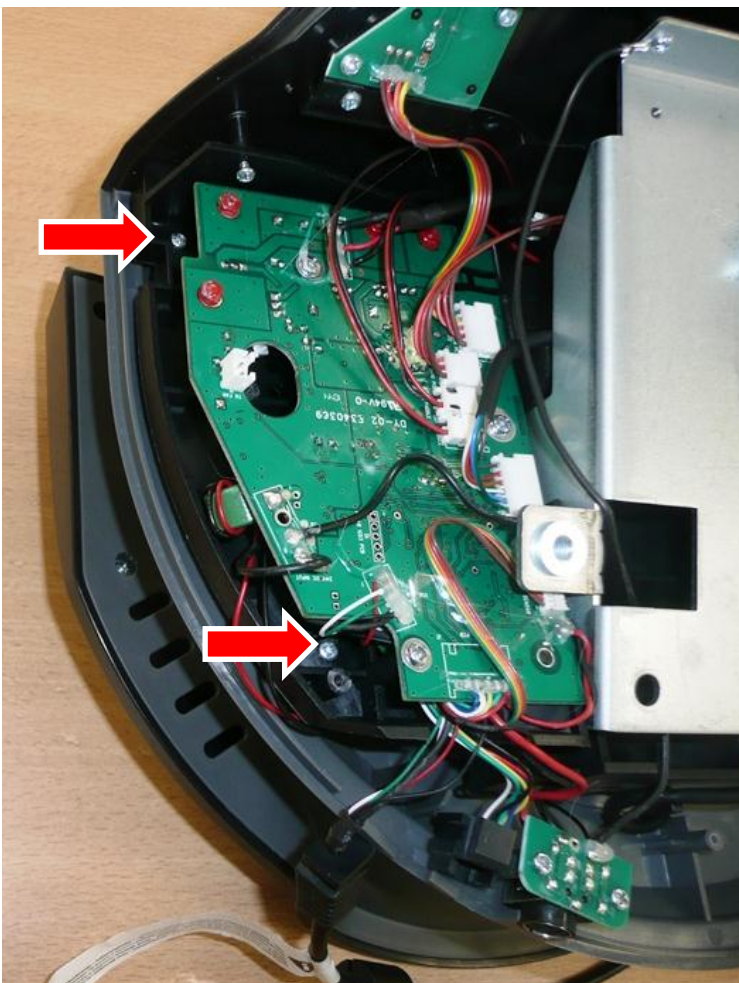
- 7) Remove the fan connector located to the right of the PCB.



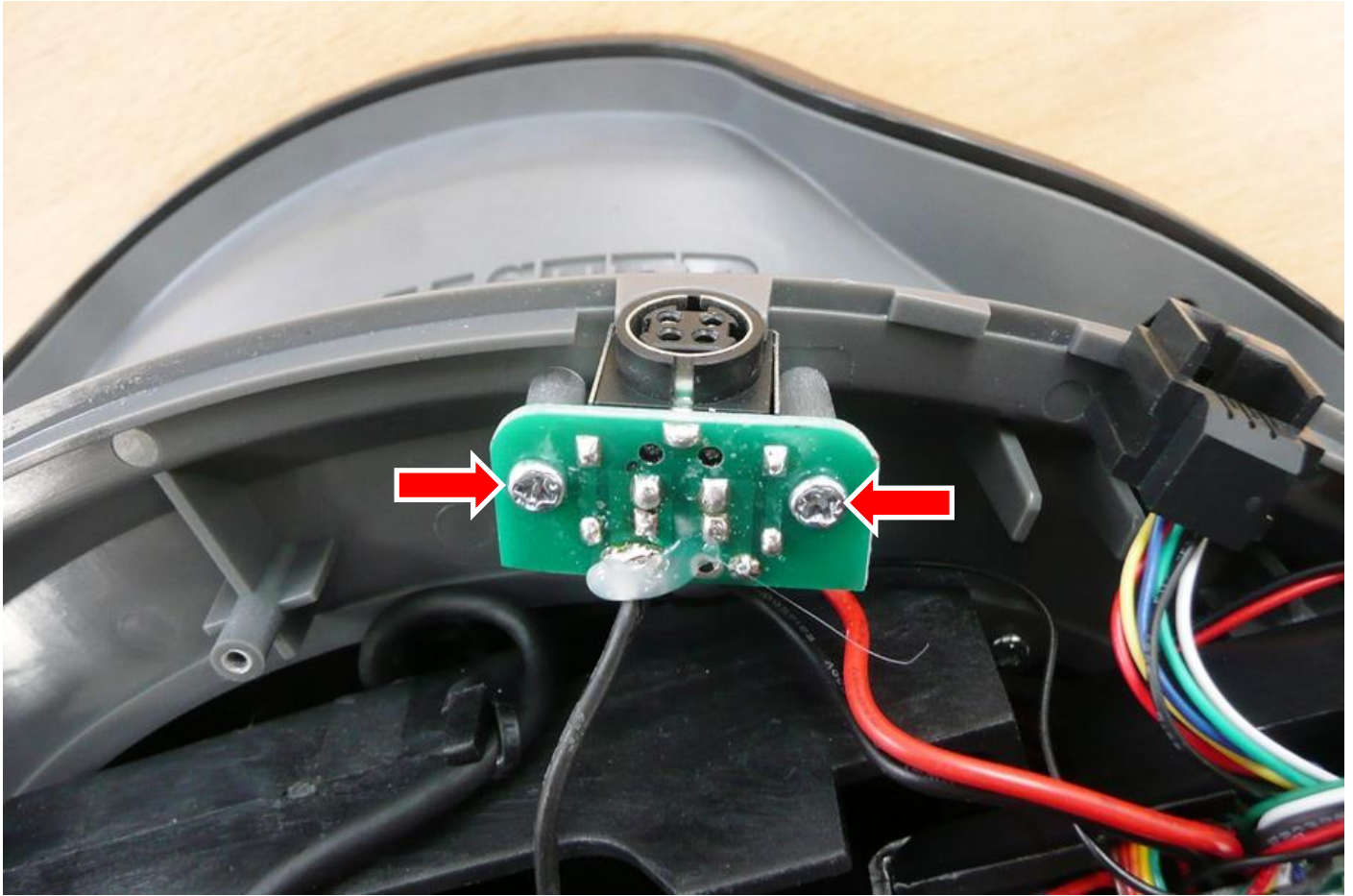
8) Loosen these 2 silver screws without removing them.



9) Remove the 4 silver screws attached to the upper cover.
There are 2 screws on the left-hand side and 2 screws on the right-hand side.



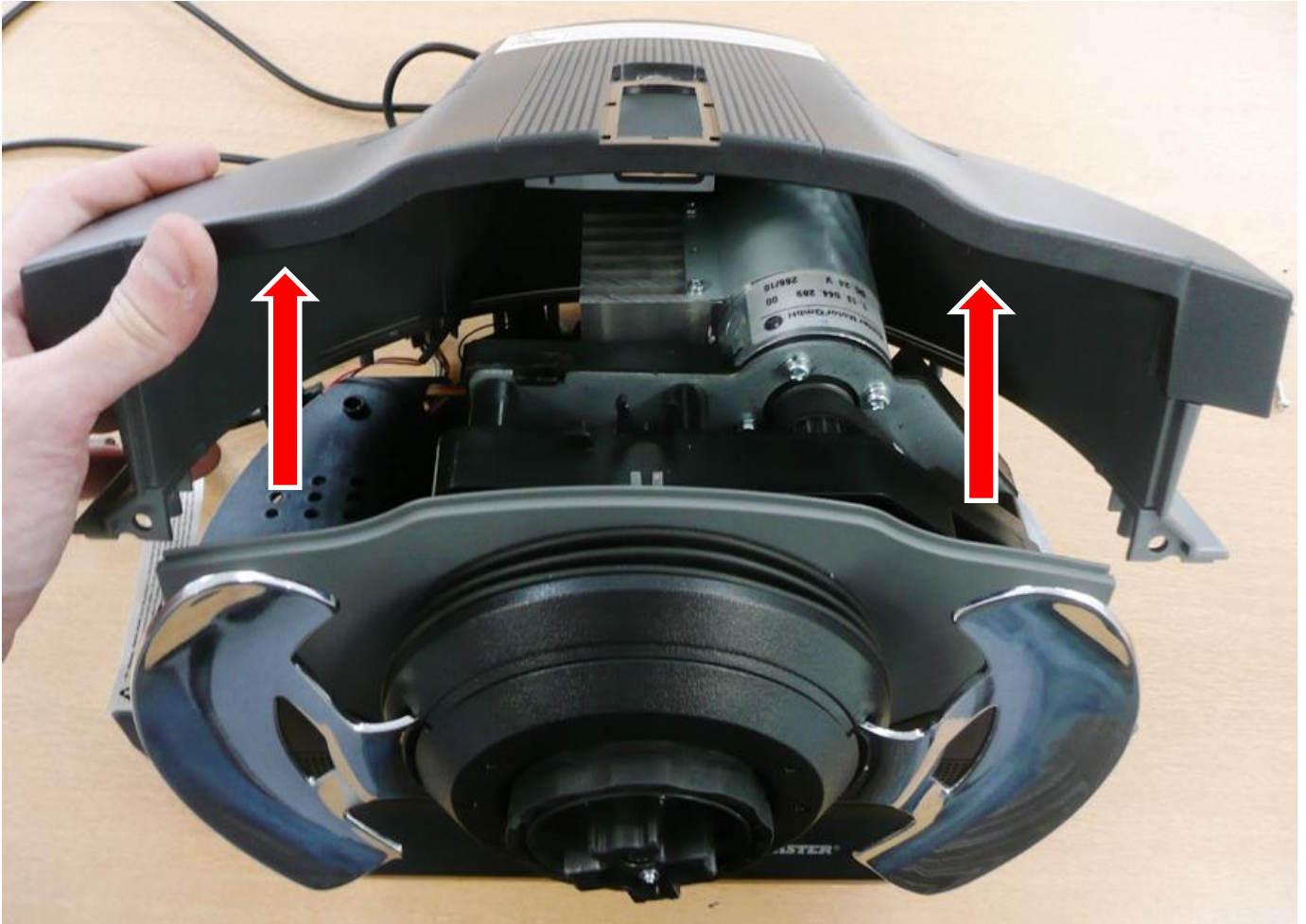
10) Remove the 2 silver screws attaching the power supply connector's PCB.



11) Remove the 2 black screws located on the front face.



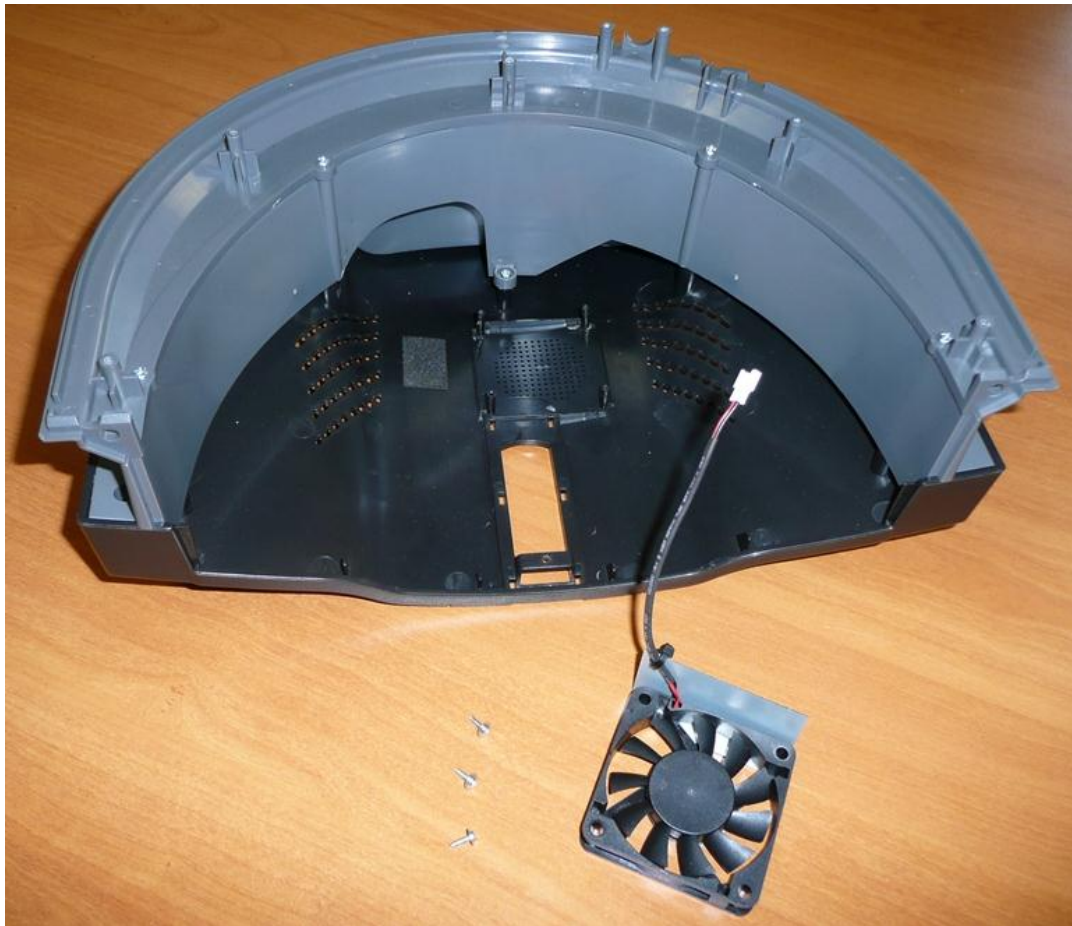
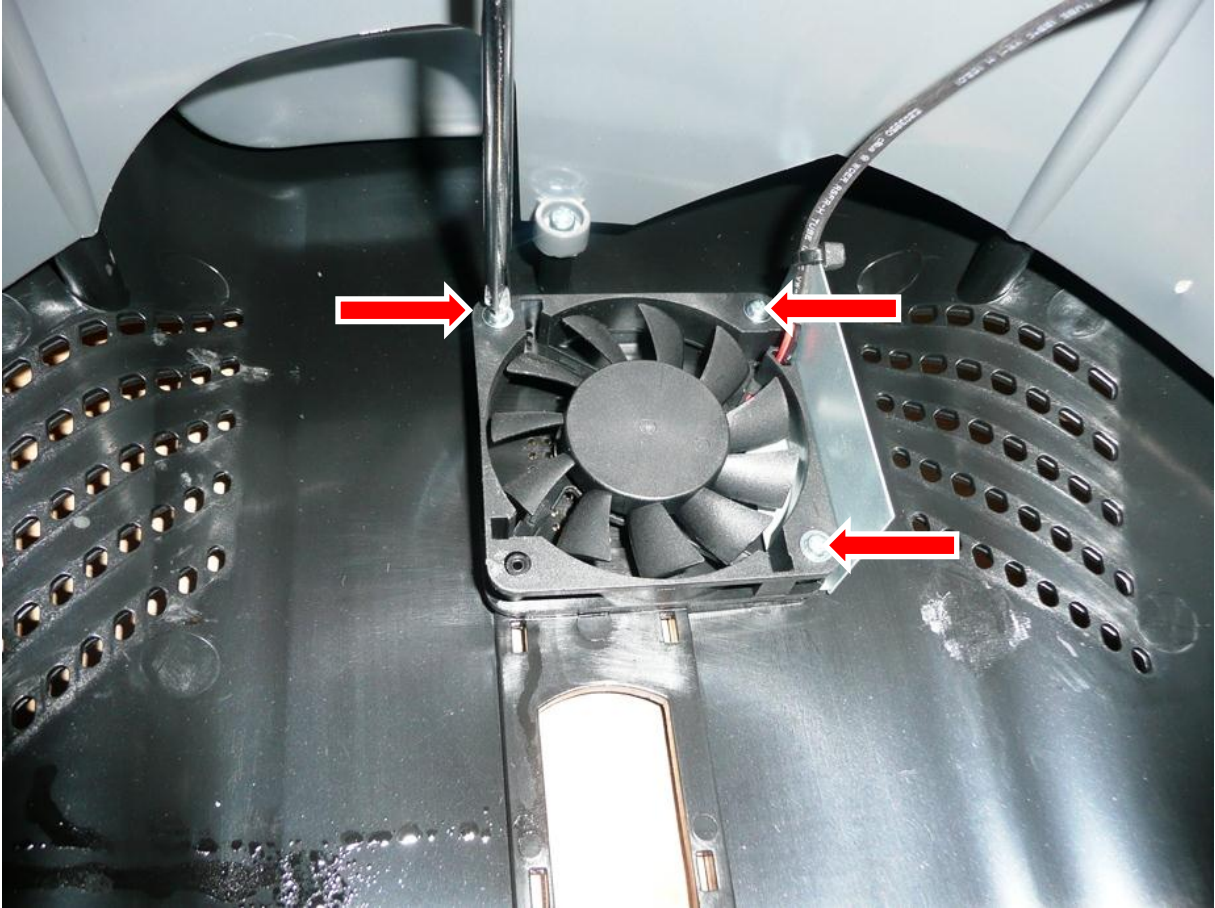
12) Remove the upper cover (exert pressure upwards and gently move the cover to the left and right).



END OF REMOVAL PROCEDURE

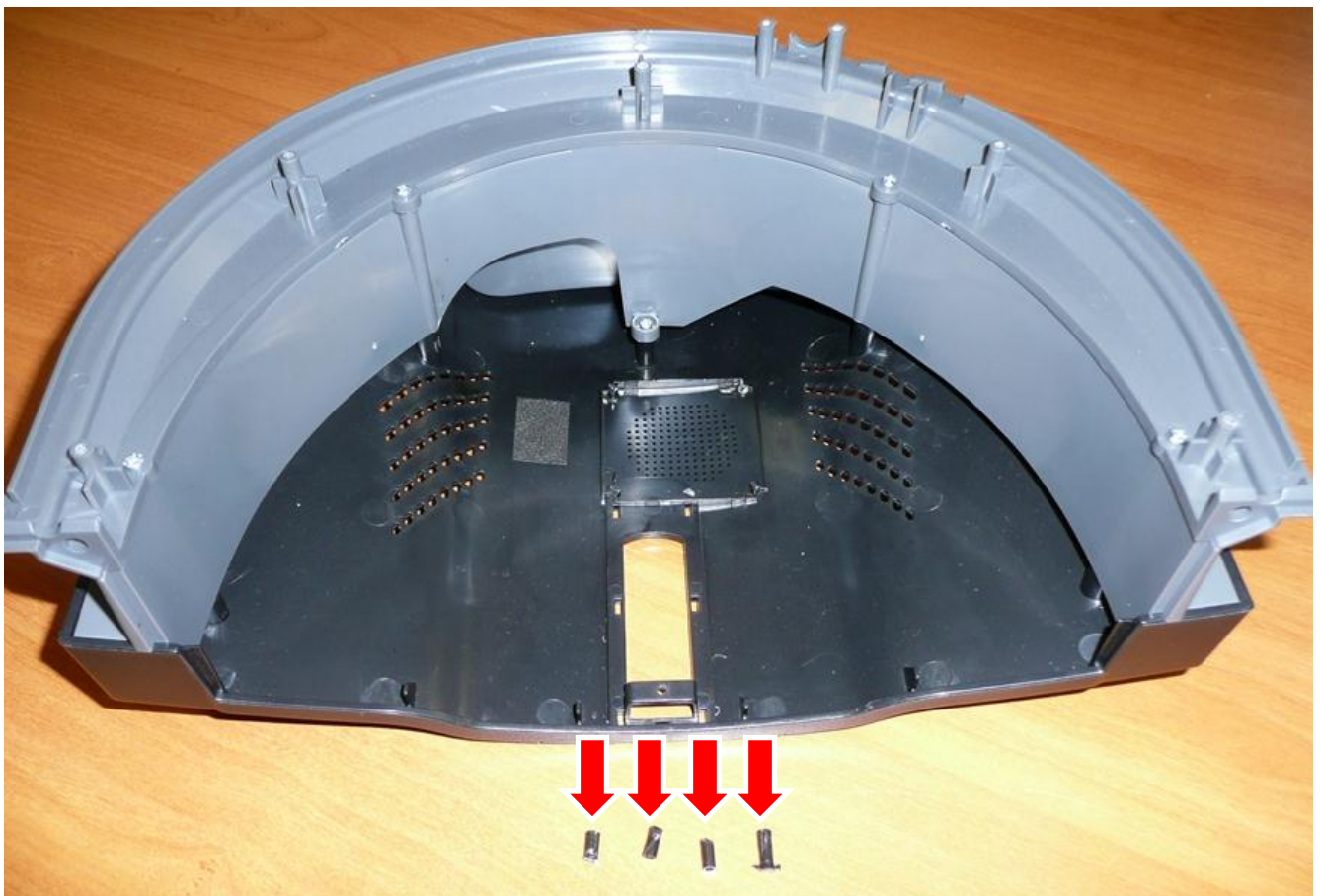
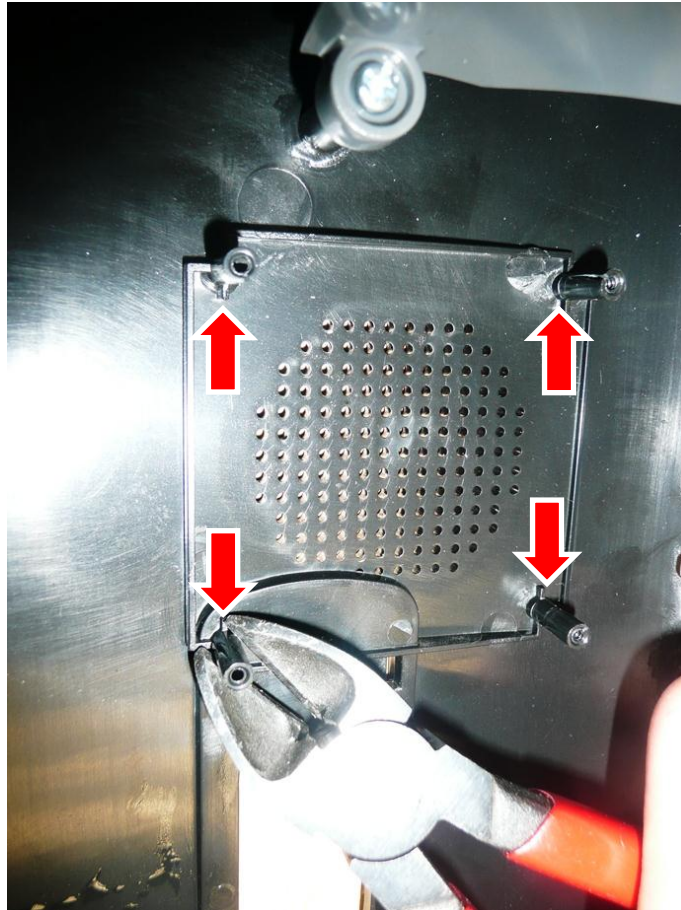
B) Installing the new fan

1) Using a cross-slotted screwdriver, remove the old fan and the aluminum sides from the upper cover.

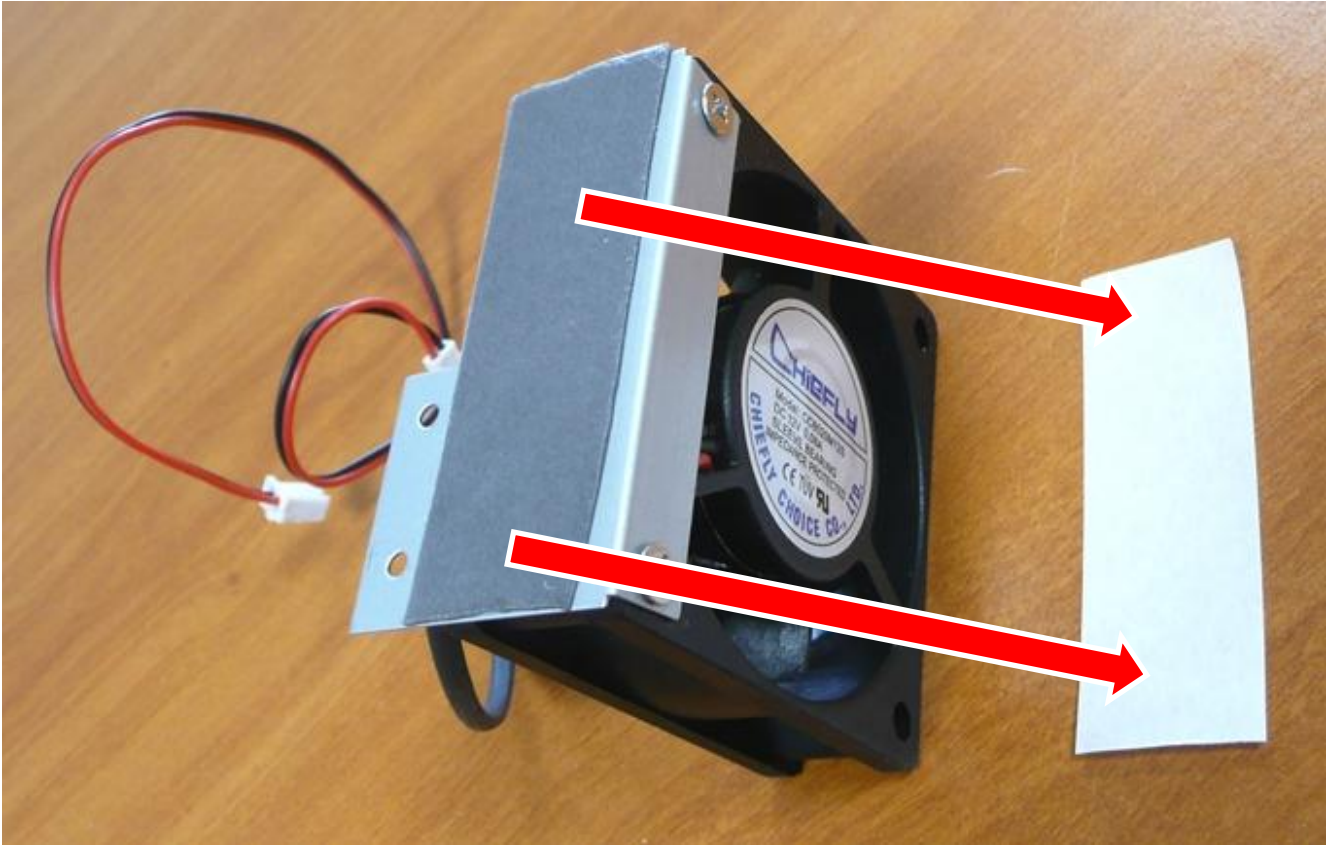


2) Using pliers, cut the 4 plastic pins that were used to attach the old fan (this will avoid any conflict with the new fan).

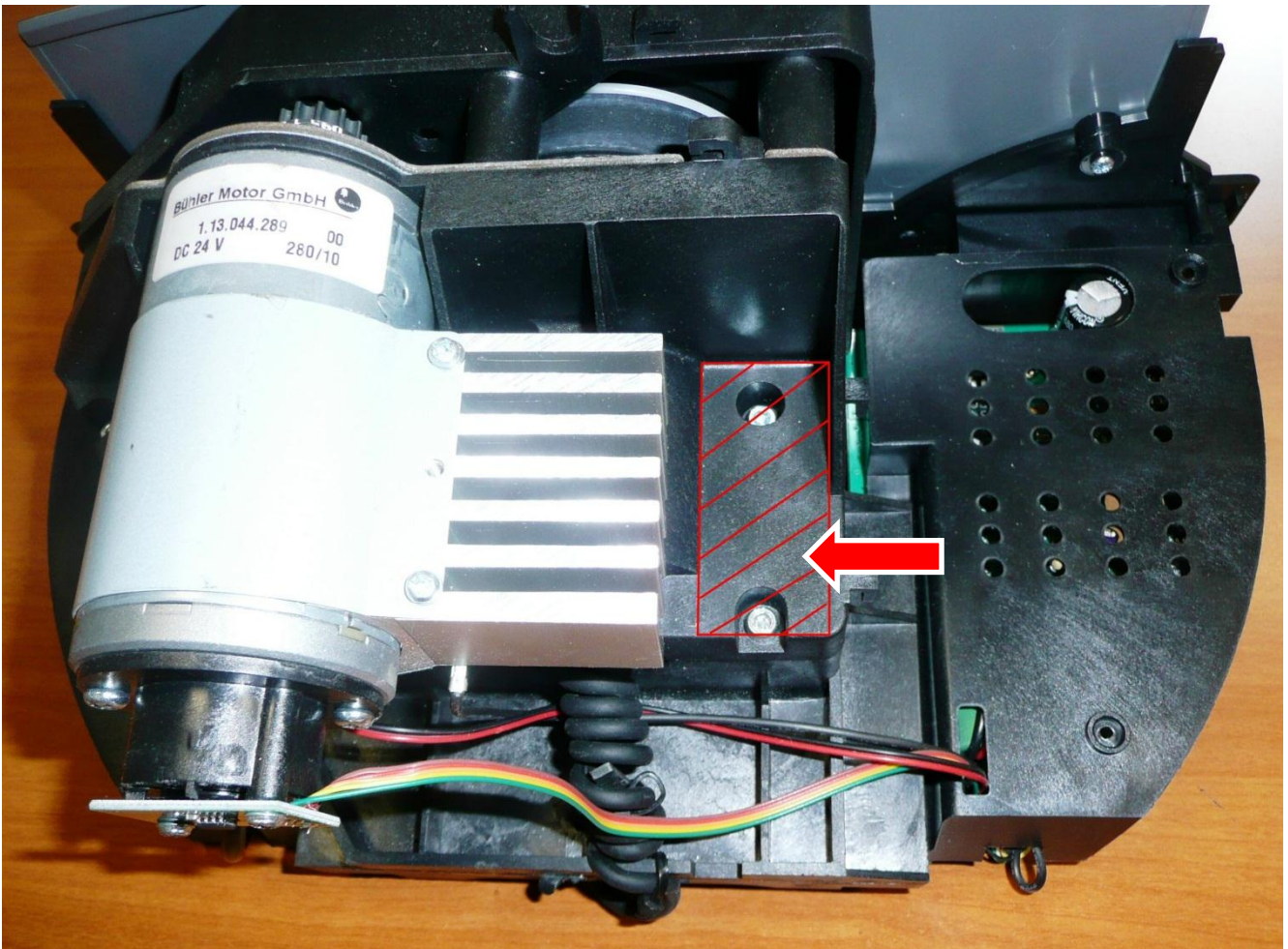
Note: doing this will not affect your product's guarantee.



3) Remove the double-sided adhesive tape located under the new fan.

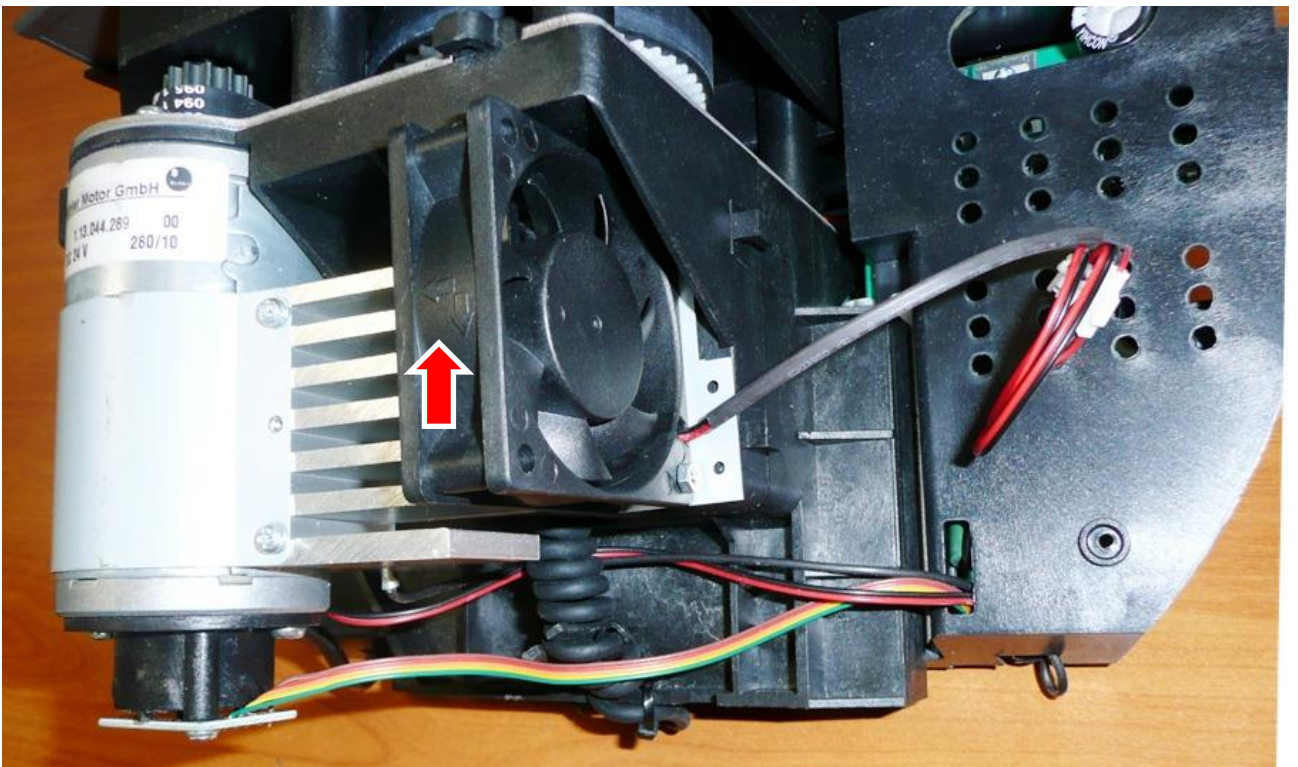
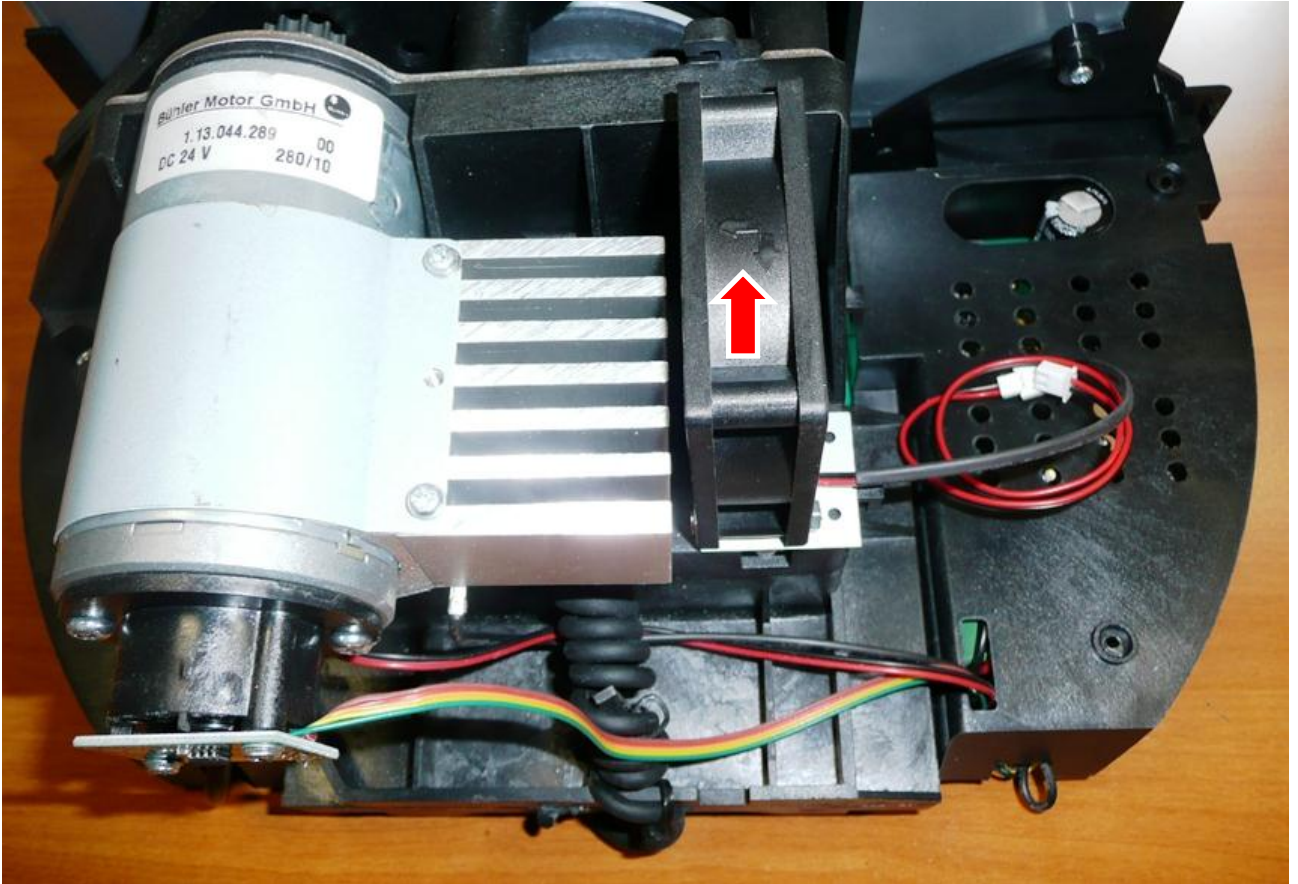


4) Insert the new fan in this location, and attach it using the double-sided adhesive tape.

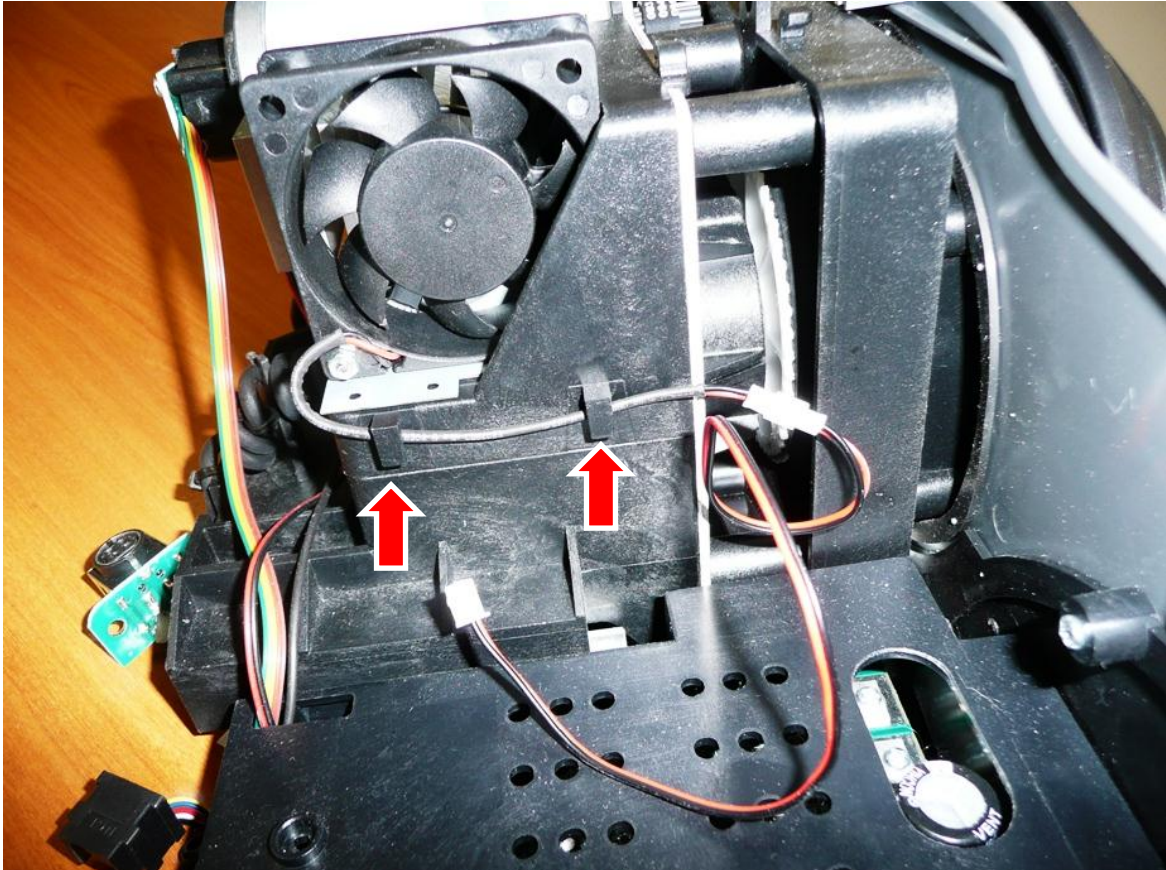


Pay attention to the arrows located on the fan's upper section:

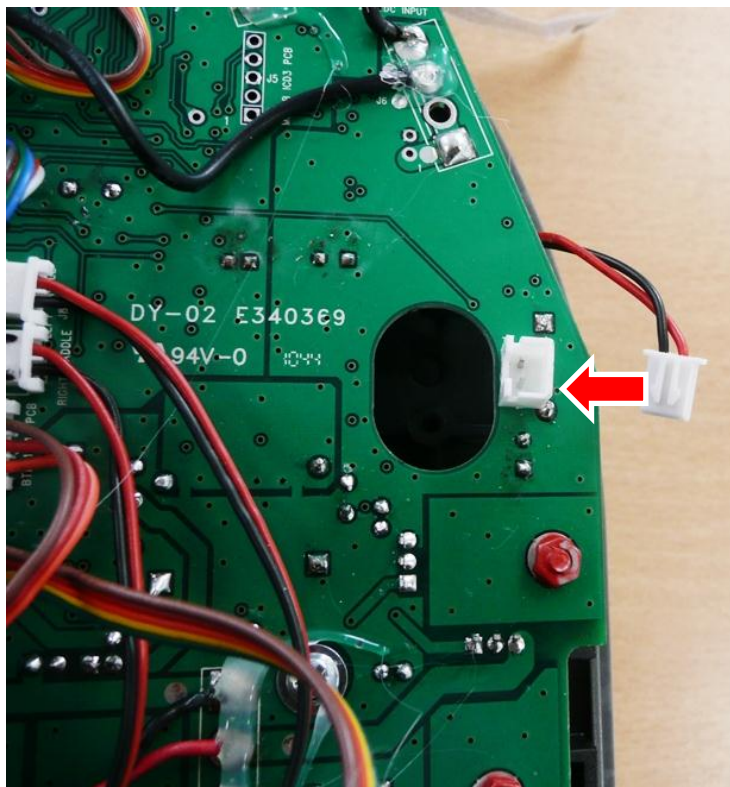
- The left-hand arrow must point towards the cooler and the engine.
- The lower arrow must point towards the back of the racing wheel's cover.



5) Attach the new fan's cable using these 2 holding tabs:



6) Reconnect the fan connector to the main PCB.



Note: the new fan doesn't contain any ferrite (i.e. the large green ring located on the old fan, near the connector). This is perfectly normal.

NEW FAN INSTALLATION COMPLETED

C) Assembly

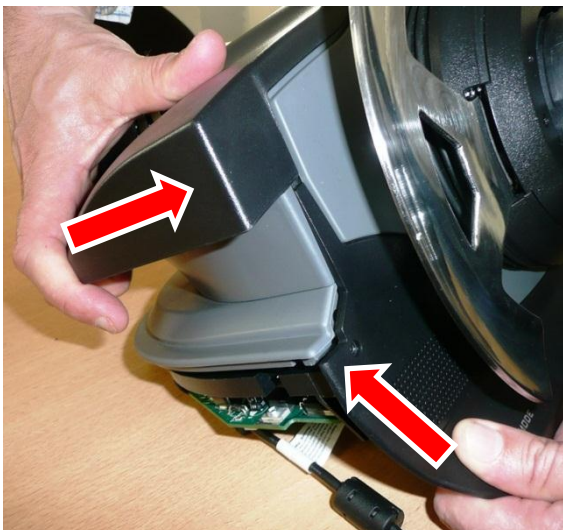
When assembling the upper cover, exert a gentle rotating movement from the back to the front of the racing wheel, taking care to insert the engine inside the housing.



Align and engage these parts located in the upper left-hand section of the cover; then, proceed likewise with the upper right-hand section of the cover).



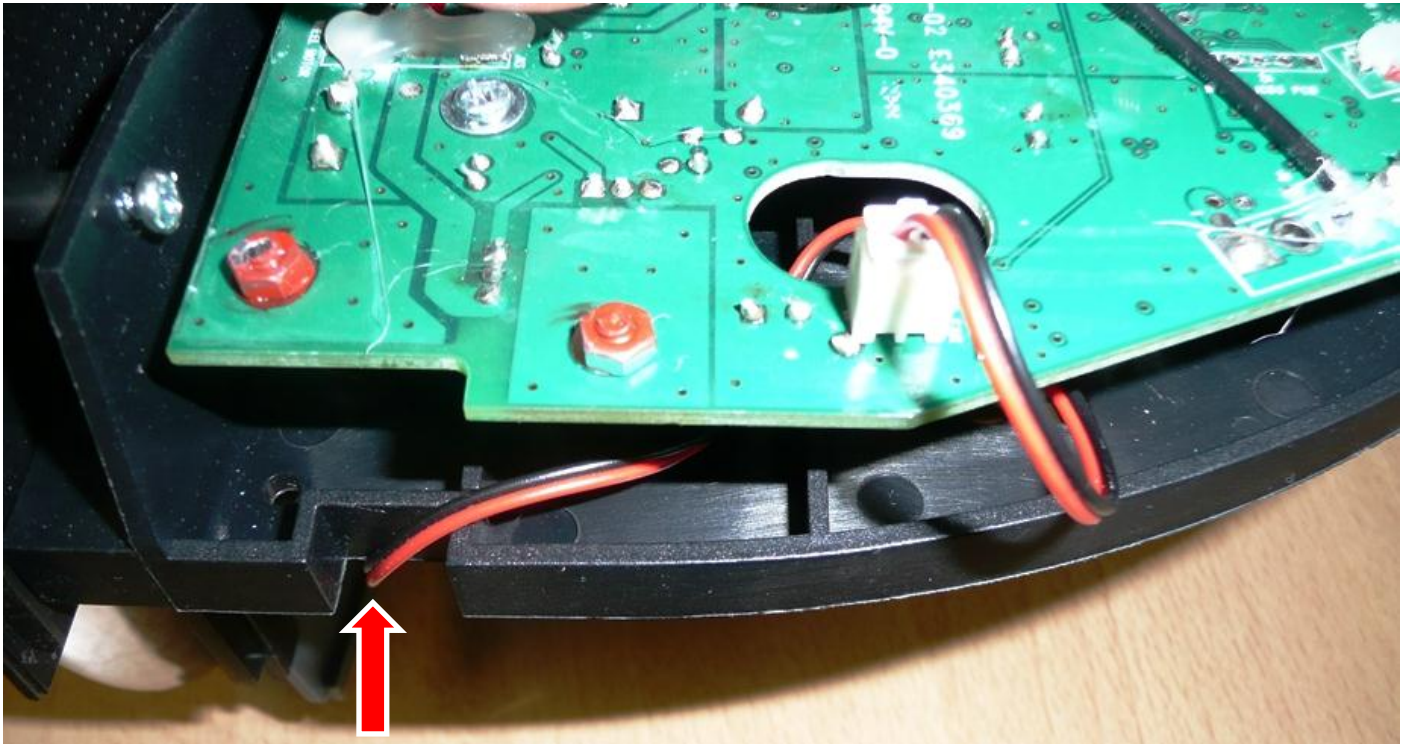
Align and engage these parts located in the lower left-hand section of the cover; then, proceed likewise with the lower right-hand section of the cover).



TO ASSEMBLE THE REST OF THE RACING WHEEL,
FOLLOW THE REMOVAL STEPS IN THE OPPOSITE ORDER,
PROCEEDING UPWARDS FROM STEP 12 TO STEP 1.

Assembly notes:

- Route the fan cable through the relevant notch, to avoid pinching it.

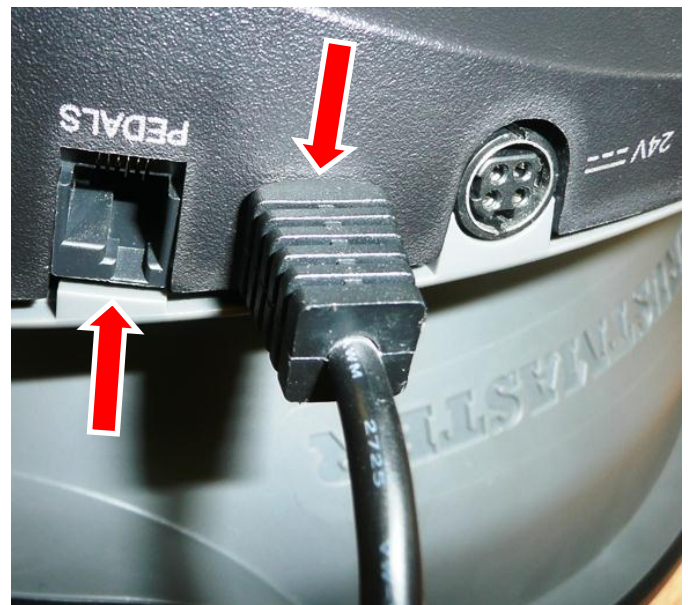


- Pay attention to the following instructions when reinstalling these items:
 - The pedal base connector must not protrude from the cover (use the intended slot inside the plastic casing).
 - Insert the USB cable correctly, as shown.

No



Yes



The right-hand photo shows a correct assembly.

ASSEMBLY COMPLETED