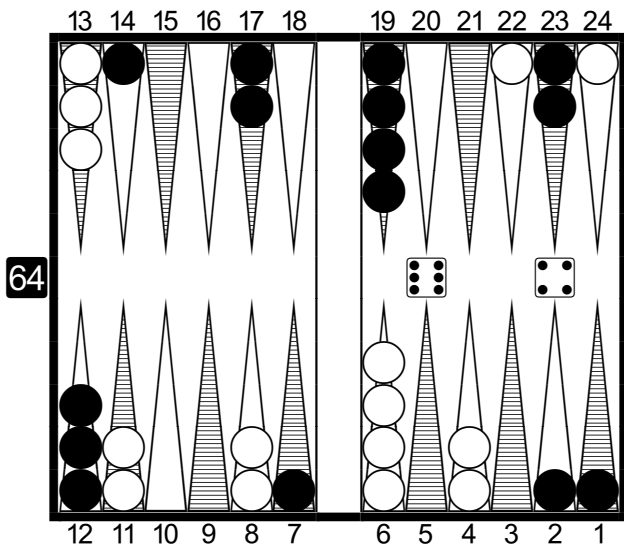


### Problem 1

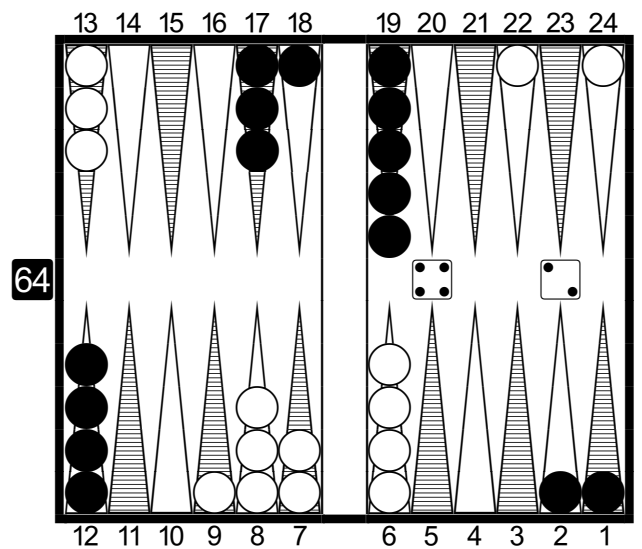
White to move - 64



- a) 24/18 22/18
- b) 24/14\*
- c) 13/7\* 11/7
- d) 13/7\* 6/2\*
- e) 8/2\* 6/2

### Problem 2

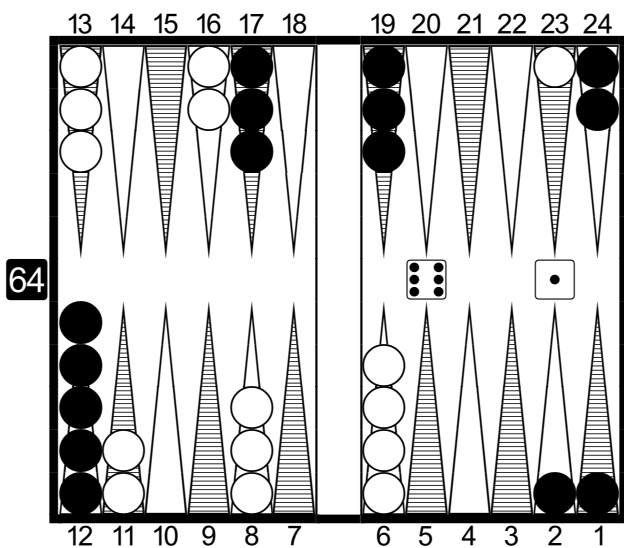
White to move - 42



- a) 24/20 22/20
- b) 24/22 13/9
- c) 22/18\* 18/16
- d) 22/18\* 9/7
- e) 8/4 6/4

### Problem 3

White to move - 61

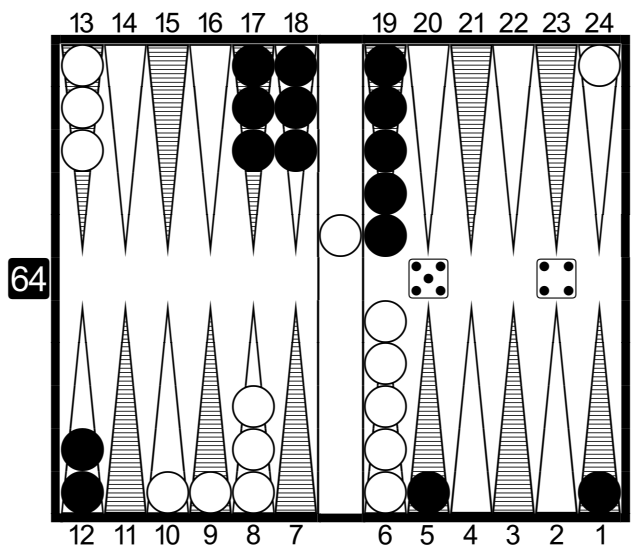


- a) 8/2\* 2/1\*
- b) 23/16
- c) 13/7 8/7
- d) 11/5 6/5

### Problem 4

White to move - 54

(White has 1 checker on the bar)

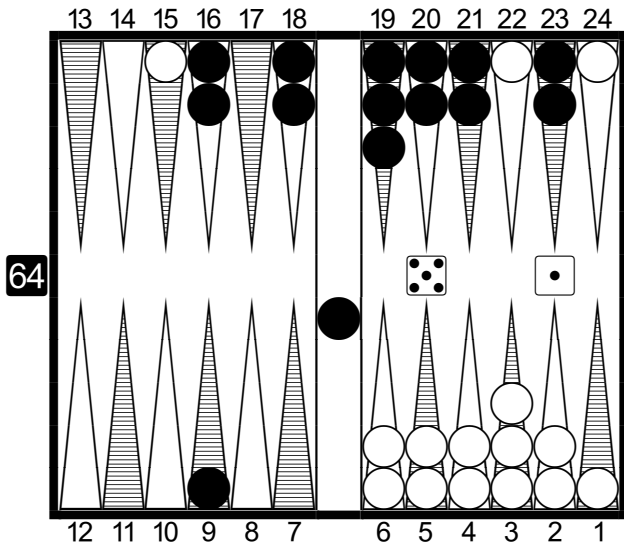


- a) Bar/20 24/20
- b) Bar/20 13/9
- c) Bar/20 9/5\*
- d) Bar/21 10/5\*

### Problem 5

White to move - 51

(Black has 1 checker on the bar)



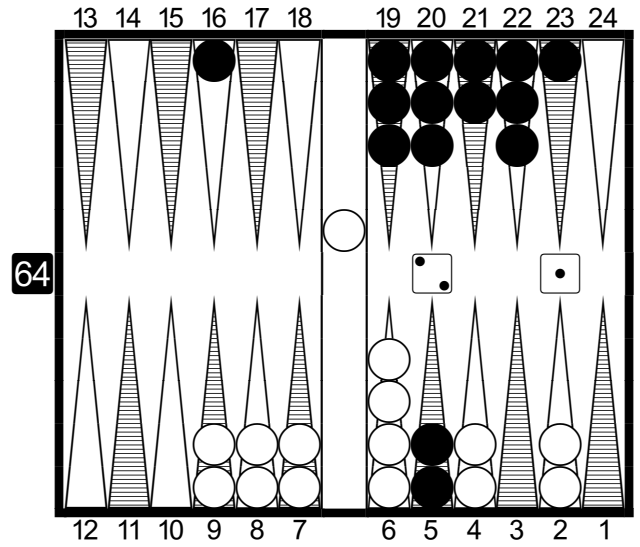
64

- a) 6/5 6/1
- b) 15/9\*
- c) 22/17 15/14
- d) 22/17 3/2

### Problem 6

White to move - 21

(White has 1 checker on the bar)

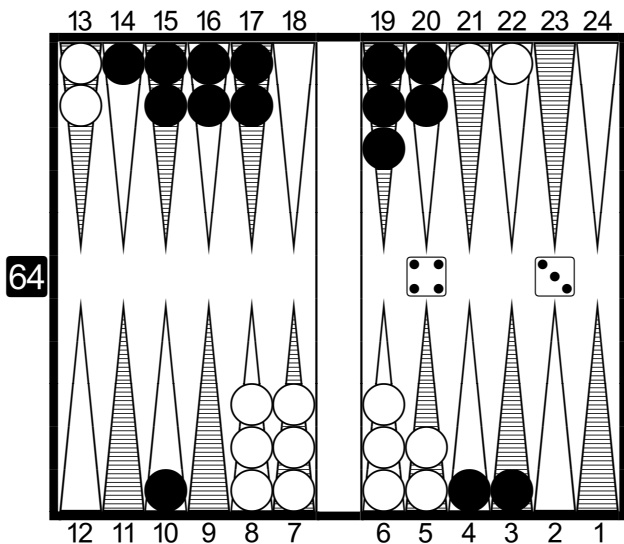


64

- a) Bar/24 6/4
- b) Bar/23\* 9/8
- c) Bar/23\* 8/7
- d) Bar/23\* 7/6
- e) Bar/23\* 2/1

### Problem 7

White to move - 43

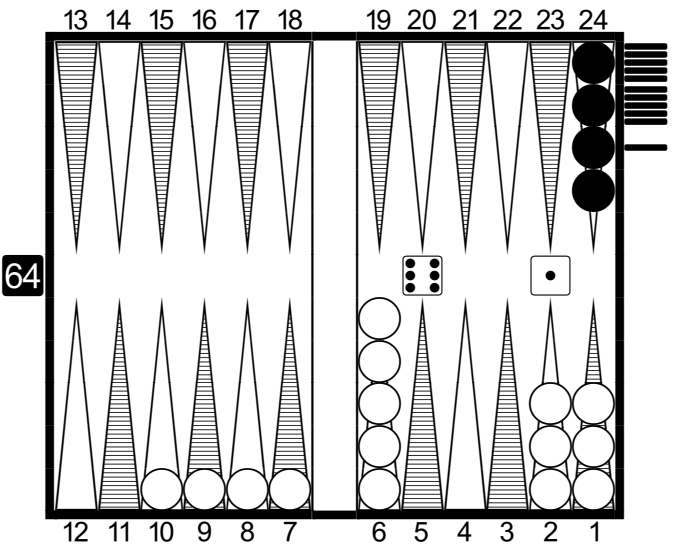


64

- a) 22/18 21/18
- b) 21/14\*
- c) 13/10\* 10/6
- d) 13/10\* 8/4
- e) 8/4\* 7/4

### Problem 8

White to move - 61



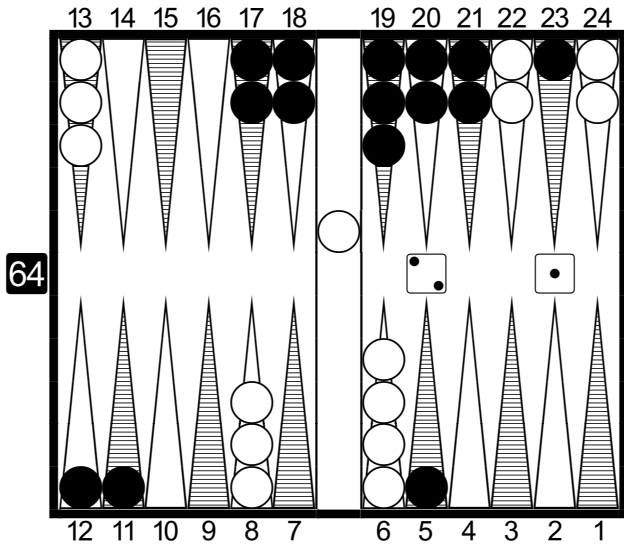
64

- a) 10/4 9/8
- b) 10/4 7/6
- c) 10/4 6/5
- d) 9/3 6/5
- e) 9/3 7/6

### Problem 9

White to move - 21

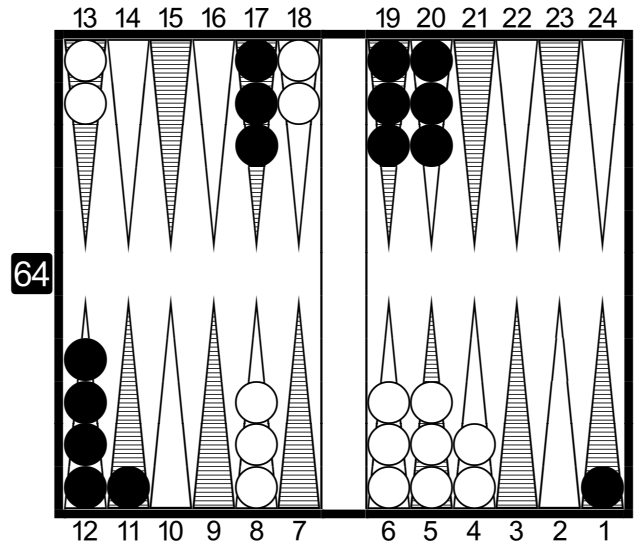
(White has 1 checker on the bar)



- a) Bar/23\* 23/22
- b) Bar/23\* 13/12\*
- c) Bar/23\* 6/5\*
- d) Bar/24 13/11\*
- e) Bar/24 24/22

### Problem 10

White on roll - cube action?

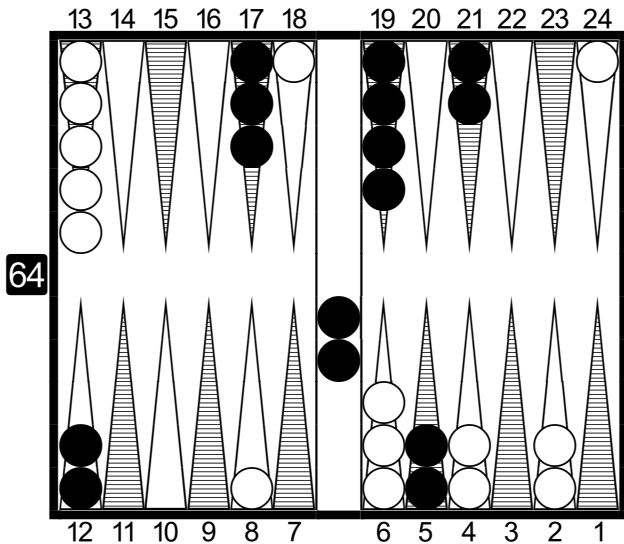


- a) No double / Take
- b) Double / Take
- c) Double / Pass
- d) Too good to double / Pass

### Problem 11

White on roll - cube action?

(Black has 2 checkers on the bar)

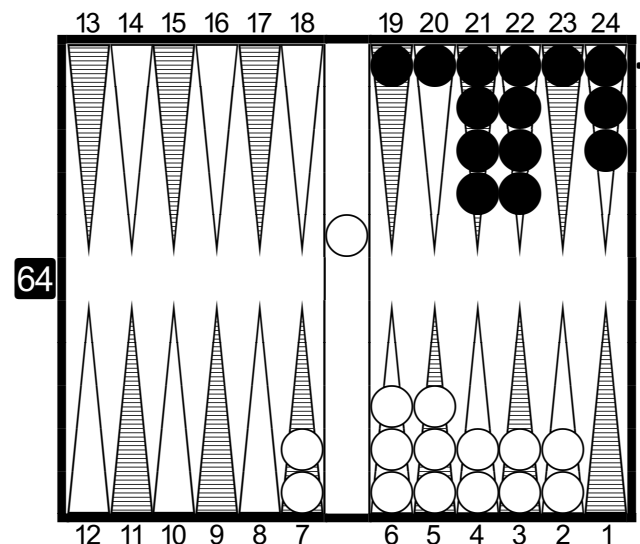


- a) No double / Take
- b) Double / Take
- c) Double / Pass
- d) Too good to double / Pass

### Problem 12

White on roll - cube action?

(White has 1 on the bar, Black has 1 off)



- a) No double / Take
- b) Double / Take
- c) Double / Pass