
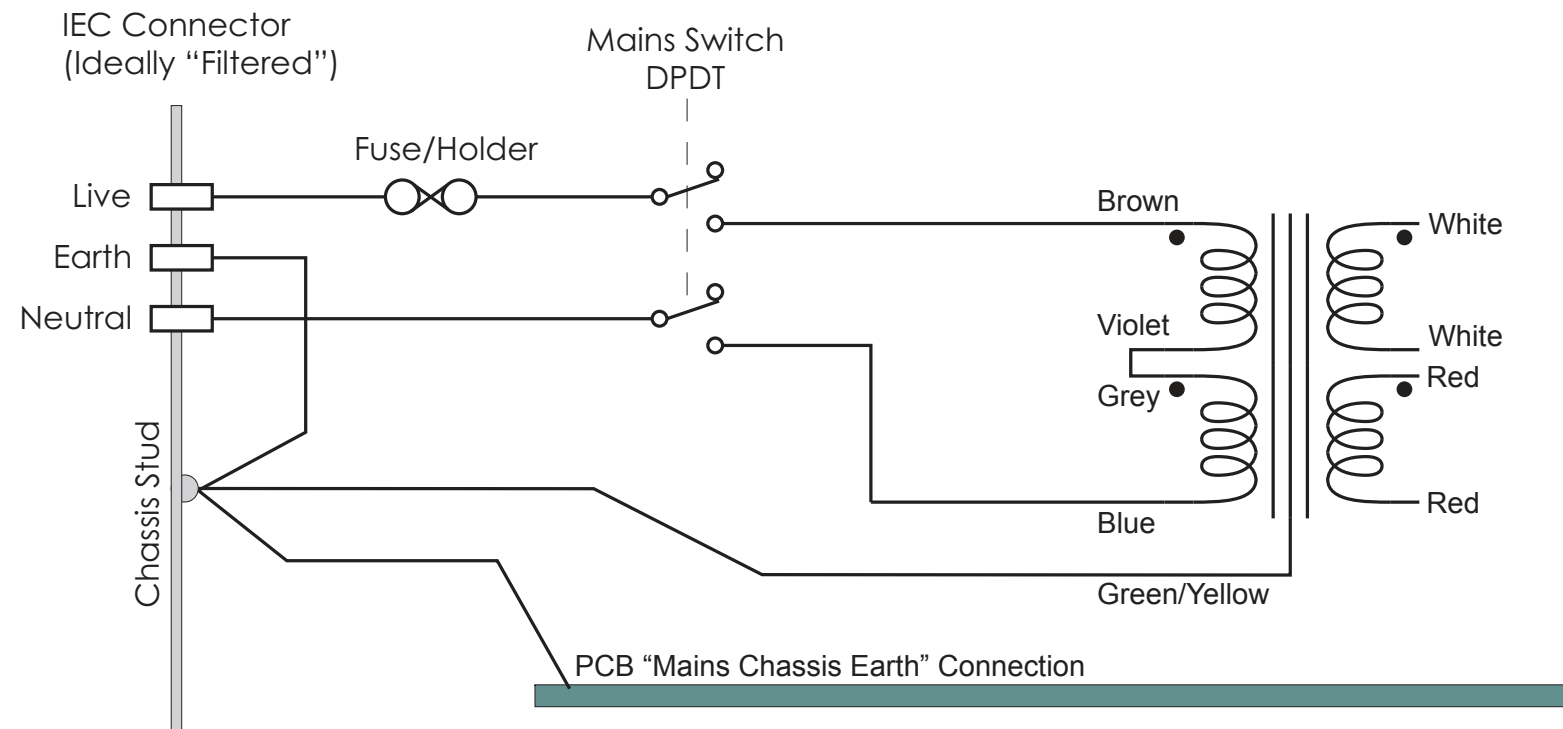
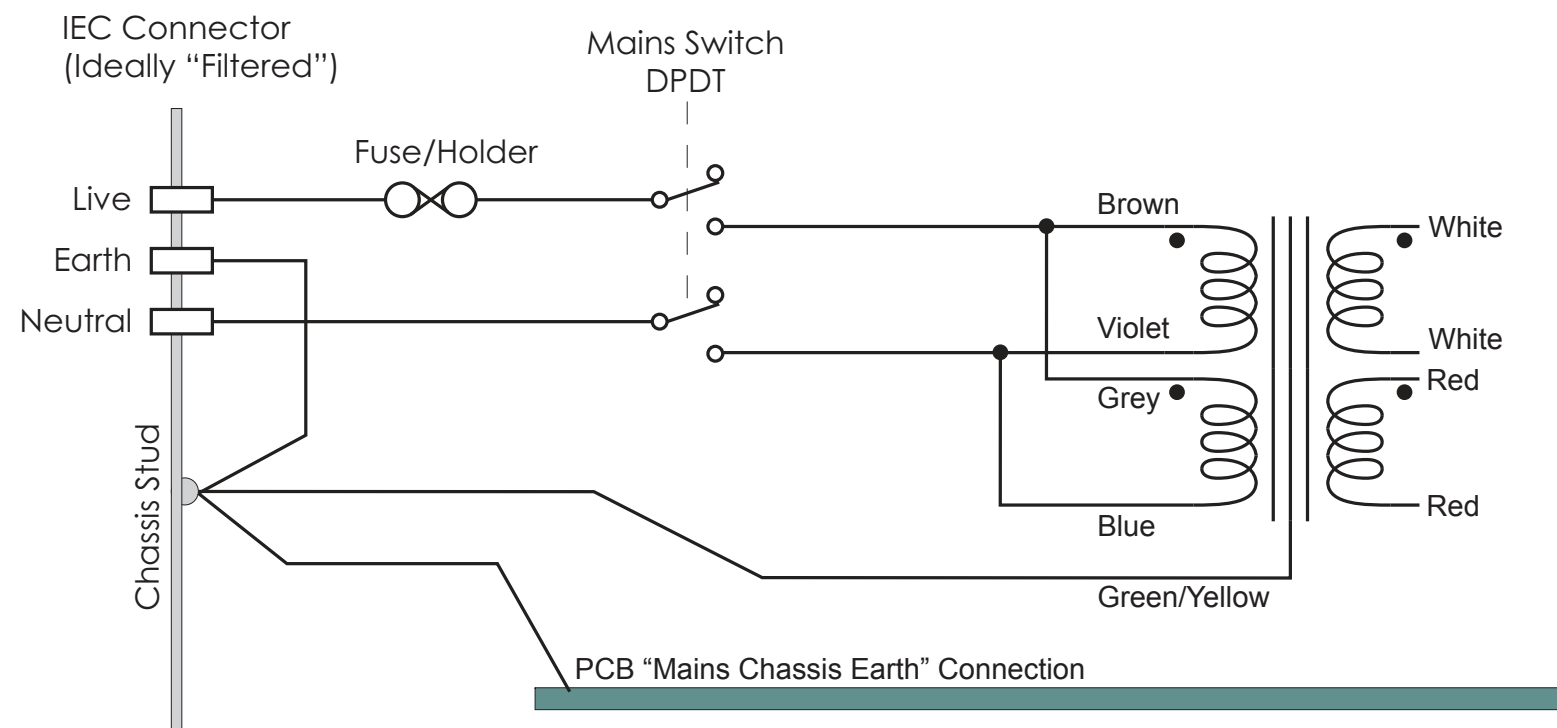


TITLE: GC-73 Alim		REV: 2.0
	Company: G.C. AUDIO	Sheet: 1/1
	Date: 2020-05-25	Drawn By: G.C.

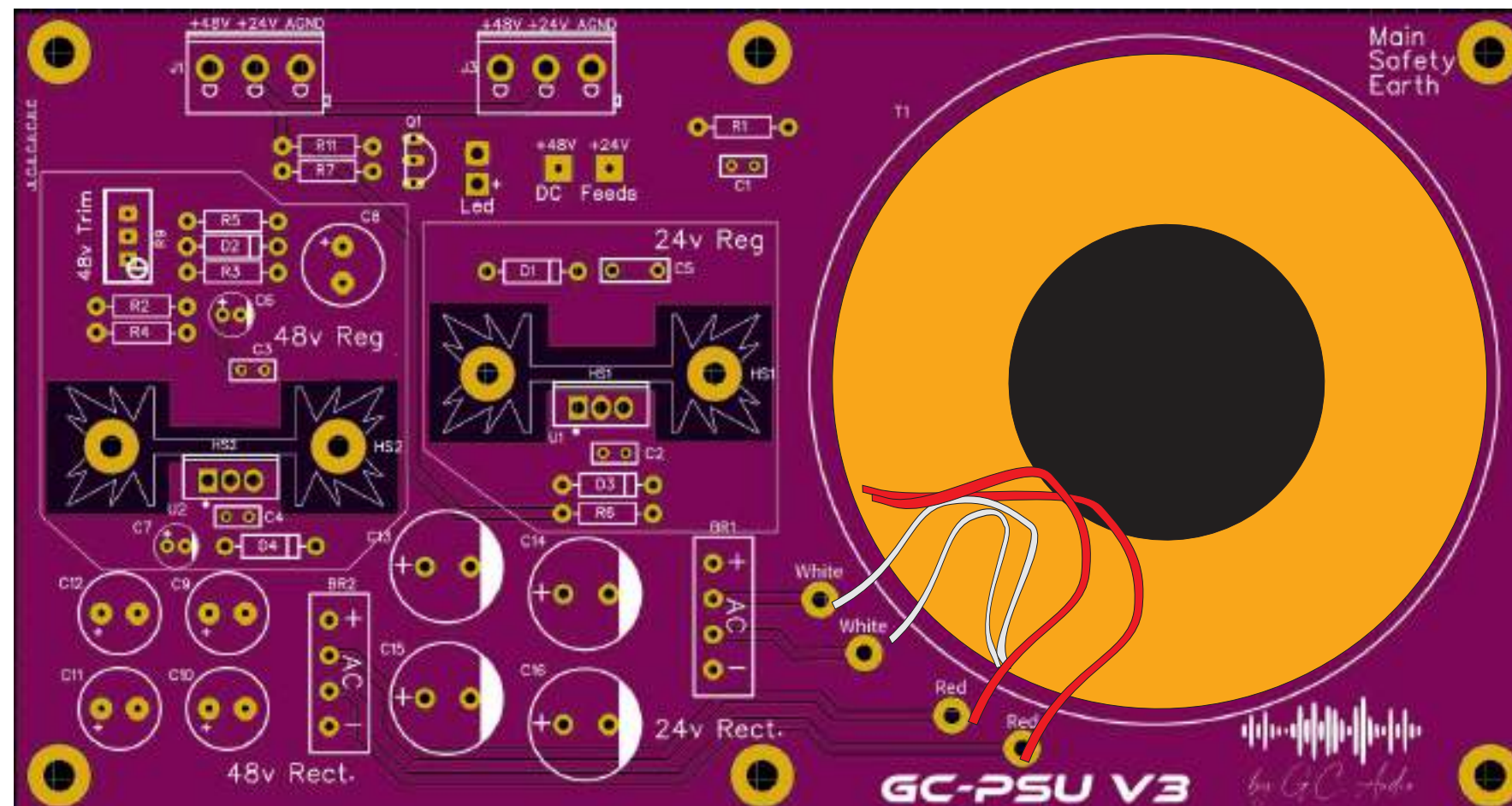
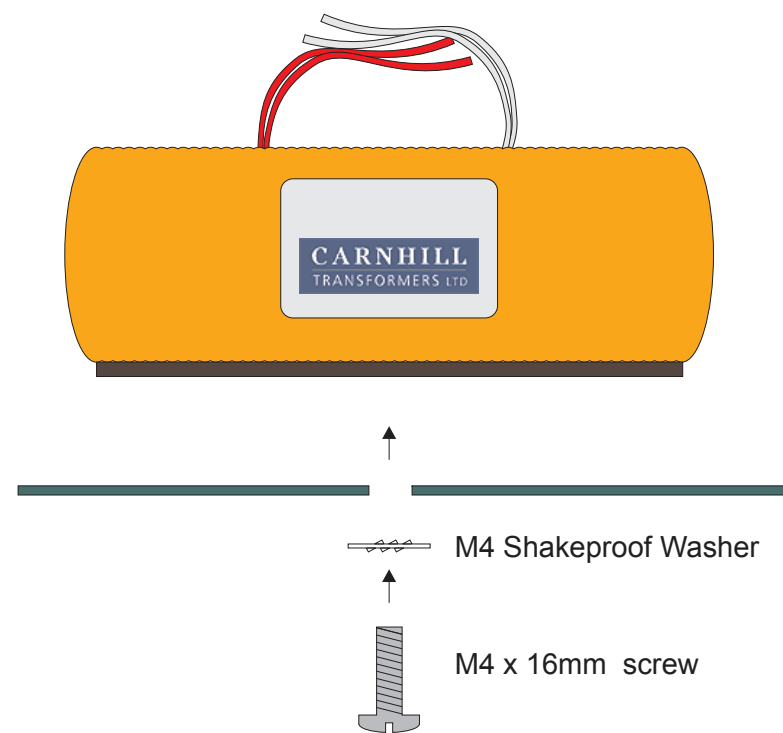
## 220-240v Transformer Wiring



## 100-120v Transformer Wiring



# GC-PW Transfo Connection



## GC-PW Calibration / Setup

### **Power Up;**

Measure the voltage under J3, +24V pad (the "DC Feeds" spade terminals)

You should read +24 volts

### **Phantom Voltage Setting;**

Measure the voltage under J3, +48V pad (the "DC Feeds" spade terminals)

Adjust R9 until you read +48 volts