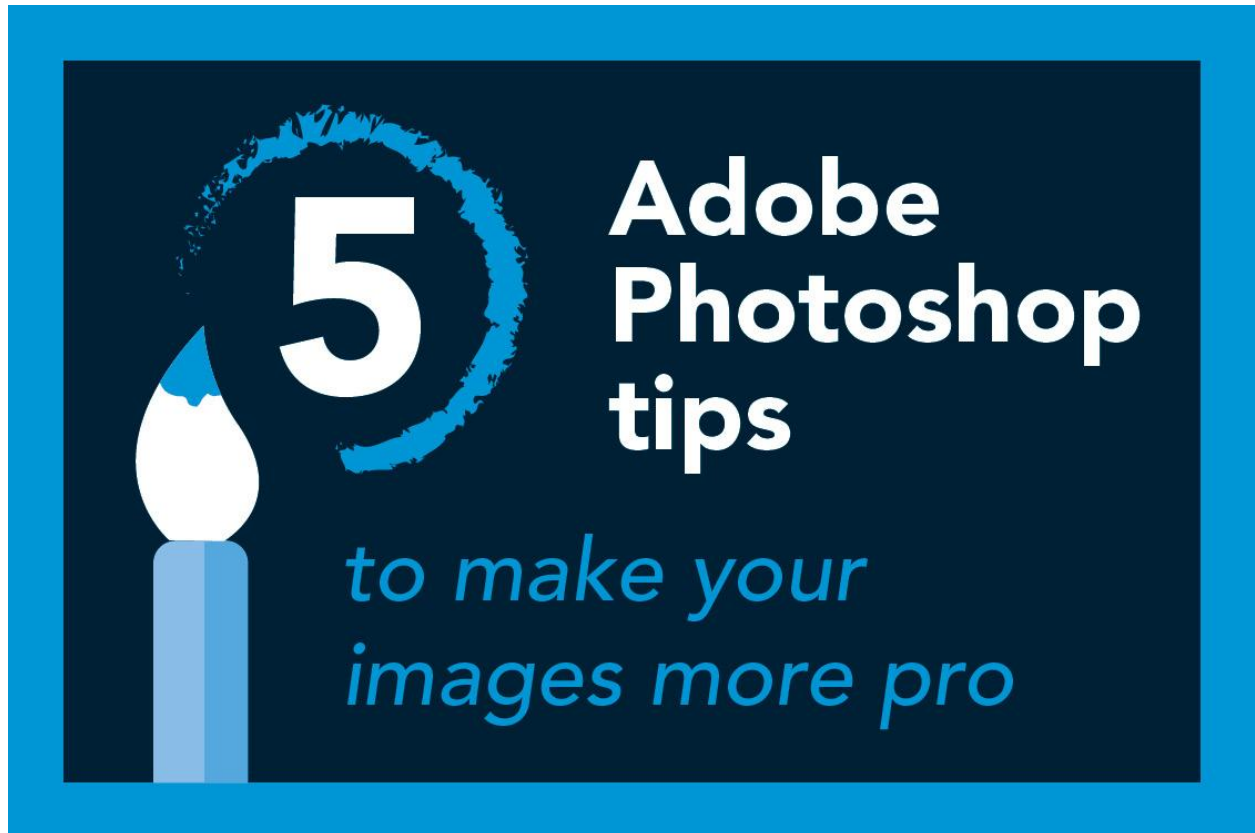


The Best Photoshop Secrets Revealed: Essential Tips and Tricks



Photoshop is a staple for [graphic designers](#). Not only does it allow them to manipulate photos in any way they see fit, but it also gives them the power to create stunning designs with just a few clicks of the mouse.

But Photoshop isn't just for beginners, it's for [professional photo editing](#). Even if you don't work with it on a daily basis, Photoshop can make your life easier. This article will show you some of the best Photoshop secrets revealed - essential tips and tricks that will help you both as a designer and as an everyday user.

The importance of Layer Masks

Layer masks are essential for the design process, and yet they are often overlooked.

When you need to [change the transparency of an object](#), you use an opacity slider. But what if you want to change the transparency of only a portion of that object?

You can use a layer mask to do that. Layer masks are also essential for combining photos. For example, if you have a photo of a cat, but prefer to use a different background, you can use [layer masks](#) to blend both images together to create your desired effect.

Layer masks are also key for editing text. For example, if you have text but want to edit the color or font, you can use a layer mask to edit just those aspects of the text. Layer masks are not only useful for design, but also for everyday applications.

The Magic Wand Tool

This powerful tool lets you select large areas of similar color with one click. It's great for selecting an area of your image that you want to fill with the same color, or selecting all the blue in a photo.

[The Magic Wand Tool](#) is also useful for selecting objects of a certain color. For example, if you want to select all blue objects in a photo, you can click on the Magic Wand Tool, click on the blue object, and then click on the "select" button at the top of the screen.

There are many other ways you can use this tool to select large areas of similar colors, shapes, or objects. So give it a try!

Use the Pen Tool to Create Complex Shapes

The Pen Tool is the most important tool in Photoshop for creating complex shapes. It's also the most difficult to master.

The Pen Tool is essential for any graphic designer who wants to create shapes with curves, points, and detail. This tool is great if you want to make a logo or create a typographical design.

The Pen Tool is also useful for making selections around an object and [removing background](#) clutter.

While it can be difficult to master, following these tips will help you get the hang of it:

- Use anchor points to control the shape you want to create.
- Draw a rough version of your shape with your mouse before using the Pen Tool for finer details.
- Make sure you're using the right layer to avoid unwanted shapes on other layers.
- Practice!

Go Straight to the Source - Adjusting Colors with Curves

Curves are one of the most powerful features of Photoshop, and it's often overlooked. Curves allow you to adjust colors with ease, making it perfect for edits like brightness and contrast.

To adjust the brightness of your photo, you can use the "[Shadows](#)" or "Highlights" setting. If you want to adjust the contrast, use the "Curves" function. Follow these steps to make the changes:

- 1) Select "Curves" in the menu
- 2) To increase brightness, drag the curve at the top left down
- 3) To reduce brightness, drag the curve at the top left up
- 4) To increase contrast, drag the curve at the bottom right up
- 5) To reduce contrast, drag the curve at the bottom right down
- 6) To preview your changes, click on "Show preview" at the bottom left

What is a Smart Object?

Photoshop is a powerful program that allows designers to do anything they want with images. There are a lot of tools that can be used to do everything from [cropping an image](#) to adding text.

But what is a Smart Object? Incredibly, a Smart Object is a way to edit an image without affecting the original image. The original image will always remain intact.

A Smart Object is an image that contains all the necessary information so it can be edited without losing quality or affecting the original file. When you open a Smart Object, it will have a small thumbnail to the right of the layers panel. This thumbnail will show you both the original and edited version of the image.

To edit a Smart object, you simply double-click on the thumbnail, make your changes, and then save it. The changes will update in your original file as well. You can also edit a Smart Object by double-clicking on the thumbnail and making your changes there, but if you want to edit several Smart Objects at once, it's best to do it from the layers panel. It's important to note that if you make a change to a Smart Object and then save it as a different file, the original file will still have the old changes

How to Export and Import Smart Objects

This is a great Photoshop trick to know. [Smart Objects](#) are a blessing, but sometimes you need to move them to a different document. They can be exported and imported without much hassle.

Open the file that contains the Smart Object you want to import into a new document. Select the Smart Object and then press Command + E (Control + E for Windows users). A dialogue box will pop up asking you where you want to save the file. Choose a place and click Save.

In the dialogue box, there is also an option to export as a .psd file. Choose the file format you want and click Export.

You can now import the Smart Object into your new document as a new layer.