



# Xclusive-AV

*Waterfall Product Brochure*

**W** WATERFALL AUDIO  
SOUND DESIGNERS

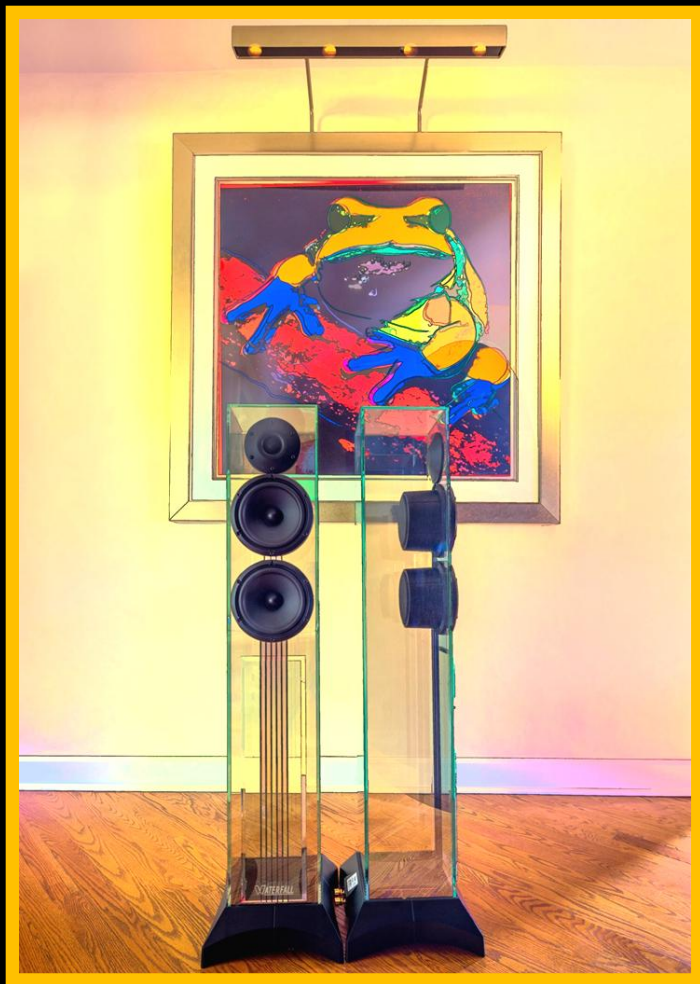


Superior Sound  
Stunning Design  
Hand Made  
Speakers for all rooms

Floor Standing  
Wall Mounted  
Surround Sound  
Sub Woofers  
5.1 Packs

PCS In-Wall Series

Glass Loudspeakers for  
an Xclusive lifestyle



A work of Art

Victoria Evo

Unobtrusive and Timeless

A Striking Hand Made Design

Audiophile Sound Quality

Identical Sound Characteristics

Across the model range

High Quality Materials

Aluminum and Glass



*“Each individual speaker is handmade and an expression of our passion”*

Cedric Aubriot, Founder and CEO

French audio specialists, **Waterfall** are true pioneers in the field of loudspeaker design.

Since 1996 they have developed and manufactured glass speakers by hand.

All materials show great attention to detail and careful processing of difficult materials such as glass and aluminium.



This **attention** results in speakers which become timeless objects of beauty in any environment.

Waterfalls patented speaker technology ensures excellent reference class audio.

Warranty on Waterfall speakers is 5 years and 2 years for Subwoofers



## Niagara Platinum

---

At an **impressive 120cm** tall, these glass towers are a masterpiece of Waterfall engineering.

The Niagara is visual delight with its stunning diamond glass, coated aluminium connecting parts, Nappa Leather covered drivers. The base is also edged with Nappa leather and creates that final touch for lovers of fine design.

Enjoy pure, detailed, distortion free audio from high quality components, drivers and a decoupled horn tweeter specifically designed for the Niagara.



## Iquascu Evo

---

The Iquascu Evo's **smaller design** is based purely on the acoustic requirements for placement within a smaller room and is not just an exercise in down-sizing.

The Iquascu Evo gives nothing away in terms of audio quality and shares the same technological advantages of the larger models.



## Victoria Evo

---

**Prestigious and Elegant**, the Victoria Evo's drivers and tweeter appear to float within the hardened, green glass enclosure.

A dynamic, yet composed sound is guaranteed with all Waterfall floor standing Speakers thanks to the Patented 'Acoustic Damping Tube' technology.

Victoria and Iguascu Evo's can be used for standalone 2 channel Stereo or Home Cinema applications when partnered with Waterfall satellite speakers and subwoofers.

Technical Specifications  
are listed on the inside  
rear cover.



## Elora Evo

**Slim, stylish aesthetics** result from the driver housing being sandwiched between glass plates.

Designed for front L/C/R duties but can also be used in a 2.1 configuration. A wall mounting bracket is included or use the optional, additional cost shelf stand.

The Elora Evo provides a perfect home theatre solution in combination with Waterfall subwoofers.



## Hurricane Evo

**Glass and aluminium** combine to give the Hurricane Evo an elegant appearance whether wall mounted (bracket included) or on optional (additional cost) shelf or floor stand.

The Hurricane Evo blends into any home and in combination with a Waterfall subwoofer is ideal for 2.1 stereo, or multi channel applications.



## Accessories and Options

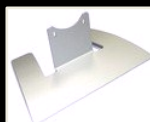
**Grille Colours** for Hurricane Evo or Serio  
In White, Grey, Black, Orange or Green



**Body Colours** for Hurricane Evo or Serio in Black, Silver or Grey



**Floor and Shelf** stands for Serio or Hurricane Evo in White, Black or Silver



Elora Evo shelf stand



Hurricane Evo shelf stand

Hurricane/ Serio floor stand



## Serio

The **compact Serio** can be used in 2.1 stereo or 5.1 channel applications in combination with Waterfall sub's.

Despite being diminutive the Serio handles high volume levels with well balanced audio and detail.



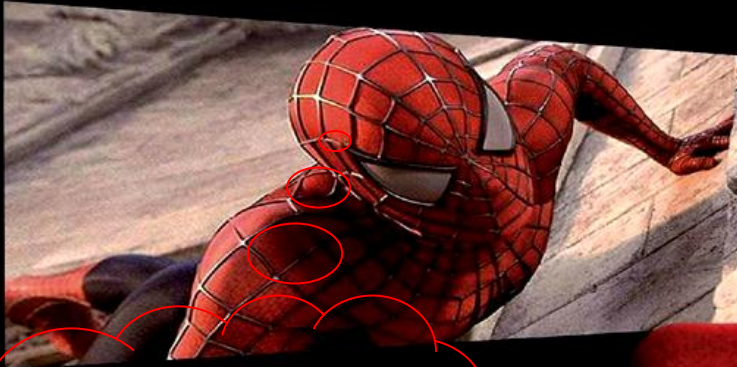
Unique Aluminium and Glass design. Wall, Floor or Shelf mount options.

Technical Specifications are listed on the inside rear cover.



# Pro Cinema Series - In-Wall Speakers

- Fixed custom housing for **perfect** audio experience
- Identical sound **characteristics** for all models
- Use also as a **High End**, In-Wall Stereo solution



*Outstanding!!!  
I need these at  
home*



## HURRICANE Evo In-Wall

**Audiophile** sound quality, paintable cover, shallow 8cm installation depth of and a simple install method all make the case for a Hurricane Evo In-Wall.

**Spec's** as for On-wall/In Room model



## PCS. Pro Cinema Series. In-Wall

### SUB 600

This **Behemoth** of a subwoofer provides powerful and detailed bass to maximum advantage and rewards the listener with high levels of precise, rich and intelligible bass



### LCR 300

These **front array** speakers, in combination with the In-Wall Sub-600 or the free standing HF3-500, guarantee a natural yet dynamic audio experience.



### SAT-150

The **ideal Surround** speaker when used in combination with LCR 300 and SUB 600.

It can also be used as an L/C/R main speaker in preference to the LCR300 if required.



Recommended installation of the PCS series is that they are behind a perforated or acoustically transparent screen. Side covers and Grille cloths are available for visible installations.

#### Specifications

	SUB-600	LCR-300	SAT-150
Type	Bass reflex	3 Way Closed	2 Way Closed
Recommend Amp	300-600 watt	100-300 watt	80-150 watt
Peak Power	900 watt	600 watt	300 watt
Impedance Av/Min		8 / 4 Ohm	8 / 4 Ohm
Efficiency 2.83v/1m	87db	91db	88db
Frequency	29Hz -150Hz	80Hz -28khz	80Hz -28khz
Tweeter	-	20mm	20mm
Bass/Midrange	2 x 230mm	3 x 150mm	1 x 150mm
Dimensions	570 x 210 x 875	570 x 210 x 430	570 x 99 x 430
Weight	40 kg	18 kg	12 kg

# HF Series - Active Subwoofers

---



HF3-500



HF2-250



HF1-200

- **Elegant Design**
- **Compact Dimensions**
- **'No Compromise' Audio Reproduction**

**High Force Subwoofers** are elegantly designed powerhouses which reproduce the low frequencies with authenticity and precision even at high volume levels.

**All models** now have Atohm Drivers powered by 'Ice Power' amplification and are the perfect partners for Waterfall's Home Cinema Speaker range.

**HF Series Subwoofers** are specifically designed for different room sizes but share the same acoustic signature.

**Finishes** are available in Black or White.

**Technical Specifications:** on last page



# Technology

## Atohm chassis (all Models)

All Drivers used in Waterfall speakers are designed and manufactured by **Atohm** in France.

**Atohm** uses a copper ring on the magnet, thus the cyclone at the magnetic poles are prevented ensuring a uniform driving force to the voice coil.

Together with the **optimised** cone suspension, an exactly symmetrical deflection of the membrane is achieved in the forward and backward movement to eliminate distortions and falsifications of the sound image.



## Acoustic Damping Tube (ADT)

(Niagara Platinum – Victoria Evo  
– Igvascu Evo)

**ADT** is a fundamental principle that allows proper functioning in a non-damped enclosure such as glass. The ADT is mounted behind the mid-bass driver and limits the return of the back wave on the cone thus dampening the cone excursion.

### Key advantages of ADT

**Controlled** damping of mid to high frequencies

**Hydraulic** damping of low frequencies

**Reduction** of LF distortion

**Increased** power handling

**Mechanical** de-coupling of the bass-mid driver from its glass enclosure

## Heatstream Technology

(Hurricane Evo/Elora Evo/Serio)

**Prolonged** high volume causes considerable heating of the voice coil. Usually a speaker's magnet is the only part which dissipates heat. A small speaker magnet cannot sufficiently dissipate heat resulting in over saturation and distortion.

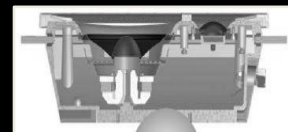
**Heat Stream** prevents this by coupling the speaker magnet to the aluminium housing, thus creating a heat sink.

### Key advantages of Heat Stream

**Overload** protection

**Higher** volume levels

**Increased** power handling

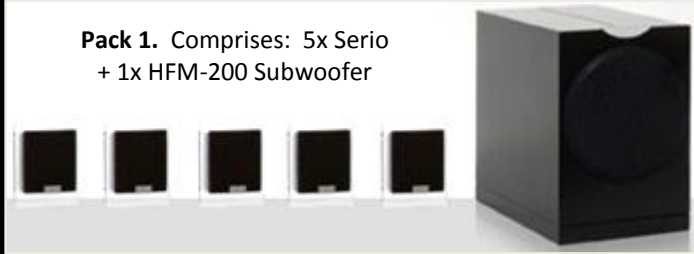


Heat Dissipates to the

# Home Cinema Packs

Waterfall **Home Cinema Audio Pack** range has been designed to suit various room sizes and listening environments. They don't just look and sound stunning, but also offer excellent value over single component prices.

**Pack 1.** Comprises: 5x Serio  
+ 1x HFM-200 Subwoofer



**Pack 2.** Comprises: 3x Hurricane Evo  
+ 2x Serio + 1x HFM-200 Sub



**Pack 3.** Comprises: 1x Elora Evo Centre  
+ 2x Hurricane Evo + 2x Serio + HF2-250 Sub



**Pack 4.** Comprises: 3x Elora Evo L/C/R  
+ 2x Hurricane Evo + 1x HF2-250 Sub



**Pack 5.** Comprises:  
1pair Victoria Evo +  
1x Elora Evo Centre +  
2x Hurricane Evo +  
1x HF2-250 Sub

All Packs are supplied with Wall Mounts and Grille Covers

<u>Specifications</u>	<u>Niagara Platinum</u>	<u>Victoria Evo</u>	<u>Iguascu Evo</u>	<u>Elora Evo</u>	<u>Hurricane Evo</u>	<u>Hurricane Evo</u>
Type	3 way / 4 Drivers	3 way / 4 Drivers	2 way / 3 Drivers	2 way / Closed	2 way / Closed	Full Range / Closed
Recommended Amplifier	60 -250 watts	40 -250 watts	40 -150 watts	40 -200 watts	50 -100 watts	30 -80 watts
Peak Power	600 watts	500 watts	300 watts	400 watts	300 watts	150 watts
Impedance: Av/Min	8 / 4 Ohms	8 / 4 Ohms	8 / 4 Ohms	6 Ohms	8 / 4 Ohms	8 / 4 Ohms
Efficiency: 2.38v/1m	89 dB	89 dB	89 dB	90 dB	89 dB	89 dB
Frequency Response: +/-3db	36 Hz – 28 khz	40 Hz – 28 khz	48 Hz – 28 khz	100 Hz – 28 khz	100 Hz – 28 khz	180 Hz – 28 khz
Tweeter: Neodymium. mm	Horn Tweeter	20mm Silk Dome	20mm Silk Dome	20mm Silk Dome	20mm Silk Dome	N/A
Drivers: Bass/Mid. mm	2 x 180 mm	2 x 150 mm	1 x 150 mm	2 x 100 mm	1 x 100 mm	1 x 80 mm
Ultra Low Frequency Driver: Passive. mm	1 x 210	1 x 210	1 x 210	N/A	N/A	N/A
Dimensions L x D x H. mm	300 x 320 x 1200	250 x 250 x 1200	250 x 250 x 870	420 x 70 x 190	185 x 85 x 275	125 x 85 x 125
Weight: Kg. approx. (each)	60 Kg	17 Kg	14 Kg	7 Kg	2 Kg	1 Kg

<u>Specifications</u>	<u>HF3-500</u>	<u>HF2-250</u>	<u>HFM-200</u>
Type	Active Bass Reflex	Active Bass Reflex	Active Bass Reflex
Built In Amplifier	500 watts	250 watts	200 watts
Peak Power	500 watts	250 watts	200 watts
Frequency Response: +/-3db	29 Hz – 150 Hz	33 Hz – 150 Hz	38 Hz – 150 Hz
Phase Control	Variable 0-180 degrees	Variable 0-180 degrees	Variable 0-180 degrees
Drivers: Bass/Mid. mm	2 x 230 mm	1 x 230 mm	1 x 180 mm
Crossover Slope	Adjustable 12, 24db/oct' or LFE switchable	Adjustable 12, 24db/oct' or LFE switchable	Adjustable 12, 24db/oct' or LFE switchable
Dimensions L x D x H. mm	290 x 490 x 520	250 x 430 x 410	220 x 344 x 300
Weight: Kg. approx. (each)	32 Kg	22 Kg	11 Kg



# *Xclusive-AV*

UK Distributors of Waterfall Audio Speakers  
& Sonato Home Control Systems



Graham Dawson CEO

2 Mount Pleasant Road. Hastings.

East Sussex. TN34 3SB

Tel: 01424 431 144

Mob: 07970 502 920

[graham@xclusiveav.com](mailto:graham@xclusiveav.com)

[www.xclusiveav.com](http://www.xclusiveav.com)



**W** WATERFALL AUDIO  
SOUND DESIGNERS