



ONE PALM

Managed by

) (*Dorchester Collection*

FLOOR PLANS



ONE PALM

Managed by

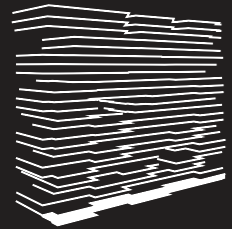
Dorchester Collection

4 Bedroom Residence

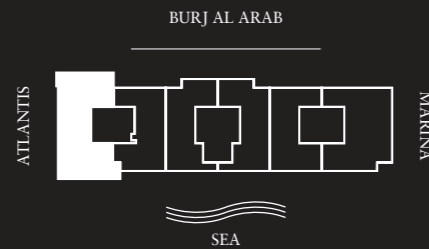
Unit 101 – 1st Floor

4 Bedrooms – 4 Bathrooms – 4 Parking Spaces

Residence	4,228 sq. ft.	393 sq. mt.
Terrace	821sq. ft.	76 sq. mt.
Total	5,049 sq. ft.	469 sq. mt.



1st Floor



Features

Private and Semi-Private Lift Lobby
Step into your lift lobby designed by acclaimed Japanese designer firm Super Potato, this area will create an environment of tranquility before you even enter your stunning residence.

Grand Main Entrance
A magnificent grand foyer serves as an impressive first step into a home of remarkable distinction.

Show Kitchen and Preparation Kitchen
Fully fitted Italian kitchen from Varenna by Poliform, integrated Gaggenau cooking, cooling and cleaning appliances supported by a European preparation kitchen with integrated Miele appliances.

Formal Dining
Entertain guests in an environment of inspired elegance and charm.

Wardrobes
Beautifully crafted walk-in closets and wardrobes by Poliform offer generous storage for every bedroom.

En-suite Rooms with Balcony/Juliet Balcony
A sumptuous, completely private space with the most impressive views.

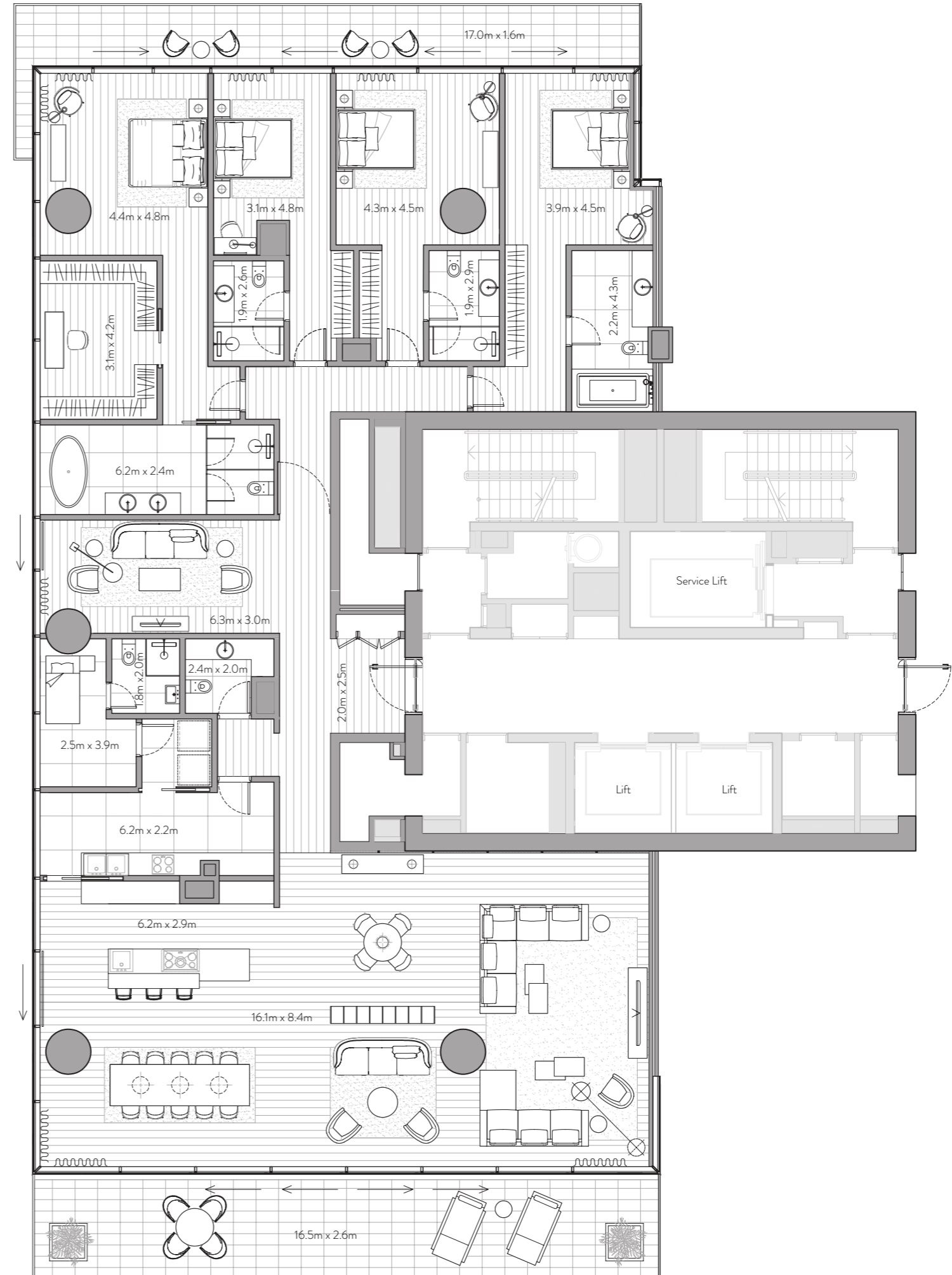
Maid's Room and Bathroom
Private quarters for maids allow for complete ease of living.

Laundry Room
Each residence comes with a dedicated laundry area.

Storage Room
Ample room to allow for a clutter-free home.

Floor to Ceiling Windows
Stunning views flood each interior space with natural light and provide an inspiring backdrop throughout each home.

Private Terrace
Escape to a relaxing, private outdoor haven that offers the perfect setting to savor a delicious barbecue under a starlit Arabian sky.





ONE PALM

Managed by

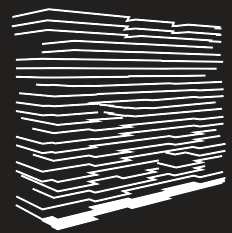
Dorchester Collection

4 Bedroom Residence

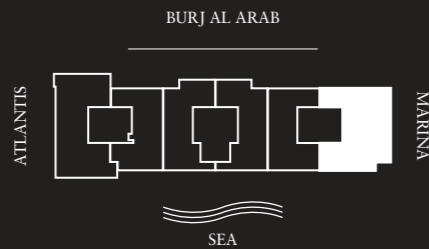
Unit 106 – 1st Floor

4 Bedrooms – 4 Bathrooms – 4 Parking Spaces

Residence	4,464 sq. ft.	415 sq. mt.
Terrace	490 sq. ft.	46 sq. mt.
Total	4,954 sq. ft.	460 sq. mt.



1st Floor



Features

Private and Semi-Private Lift Lobby
Step into your lift lobby designed by acclaimed Japanese designer firm Super Potato, this area will create an environment of tranquility before you even enter your stunning residence.

Grand Main Entrance
A magnificent grand foyer serves as an impressive first step into a home of remarkable distinction.

Show Kitchen and Preparation Kitchen
Fully fitted Italian kitchen from Varenna by Poliform, integrated Gaggenau cooking, cooling and cleaning appliances supported by a European preparation kitchen with integrated Miele appliances.

Formal Dining
Entertain guests in an environment of inspired elegance and charm.

Wardrobes
Beautifully crafted walk-in closets and wardrobes by Poliform offer generous storage for every bedroom.

En-suite Rooms with Balcony/Juliet Balcony
A sumptuous, completely private space with the most impressive views.

Maid's Room and Bathroom
Private quarters for maids allow for complete ease of living.

Laundry Room
Each residence comes with a dedicated laundry area.

Storage Room
Ample room to allow for a clutter-free home.

Floor to Ceiling Windows
Stunning views flood each interior space with natural light and provide an inspiring backdrop throughout each home.

Private Terrace
Escape to a relaxing, private outdoor haven that offers the perfect setting to savor a delicious barbecue under a starlit Arabian sky.





ONE PALM

Managed by

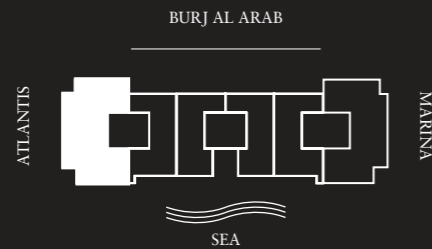
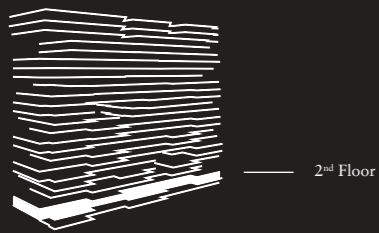
Dorchester Collection

4 Bedroom Residence

Unit 201 – 2nd Floor

4 Bedrooms – 4 Bathrooms – 4 Parking Spaces

Residence	4,474 sq. ft.	416 sq. mt.
Terrace	1,773 sq. ft.	165 sq. mt.
Total	6,247 sq. ft.	580 sq. mt.



Features

Private and Semi-Private Lift Lobby
Step into your lift lobby designed by acclaimed Japanese designer firm Super Potato, this area will create an environment of tranquility before you even enter your stunning residence.

Grand Main Entrance
A magnificent grand foyer serves as an impressive first step into a home of remarkable distinction.

Show Kitchen and Preparation Kitchen
Fully fitted Italian kitchen from Varenna by Poliform, integrated Gaggenau cooking, cooling and cleaning appliances supported by a European preparation kitchen with integrated Miele appliances.

Formal Dining
Entertain guests in an environment of inspired elegance and charm.

Wardrobes
Beautifully crafted walk-in closets and wardrobes by Poliform offer generous storage for every bedroom.

En-suite Rooms with Balcony/Juliet Balcony
A sumptuous, completely private space with the most impressive views.

Maid's Room and Bathroom
Private quarters for maids allow for complete ease of living.

Laundry Room
Each residence comes with a dedicated laundry area.

Storage Room
Ample room to allow for a clutter-free home.

Floor to Ceiling Windows
Stunning views flood each interior space with natural light and provide an inspiring backdrop throughout each home.

Private Terrace
Escape to a relaxing, private outdoor haven that offers the perfect setting to savor a delicious barbecue under a starlit Arabian sky.





ONE PALM

Managed by

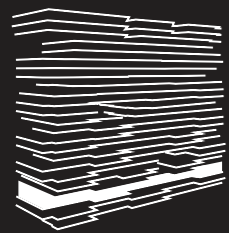
Dorchester Collection

4 Bedroom Duplex

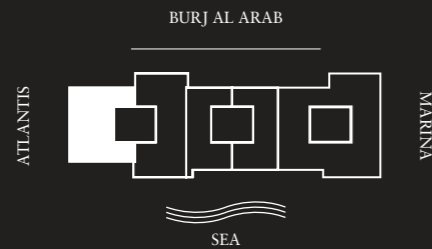
Unit 301 – 3rd / 4th Floor

4 Bedrooms – 4 Bathrooms – 4 Parking Spaces

Residence	4,418 sq. ft.	410 sq. mt.
Terrace	1,903 sq. ft.	177 sq. mt.
Total	6,322 sq. ft.	587 sq. mt.



3rd Floor



Features

Private and Semi-Private Lift Lobby
Step into your lift lobby designed by acclaimed Japanese designer firm Super Potato, this area will create an environment of tranquility before you even enter your stunning residence.

Grand Main Entrance
A magnificent grand foyer serves as an impressive first step into a home of remarkable distinction.

Show Kitchen and Preparation Kitchen
Fully fitted Italian kitchen from Varenna by Poliform, integrated Gaggenau cooking, cooling and cleaning appliances supported by a European preparation kitchen with integrated Miele appliances.

Formal Dining
Entertain guests in an environment of inspired elegance and charm.

Wardrobes
Beautifully crafted walk-in closets and wardrobes by Poliform offer generous storage for every bedroom.

En-suite Rooms with Balcony/Juliet Balcony
A sumptuous, completely private space with the most impressive views.

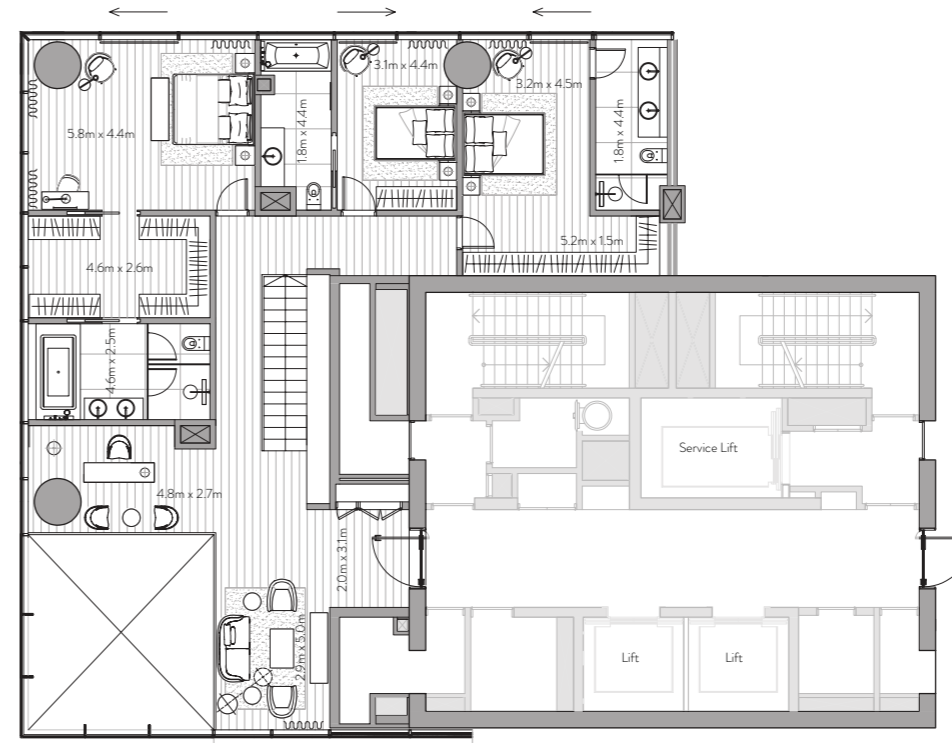
Maid's Room and Bathroom
Private quarters for maids allow for complete ease of living.

Laundry Room
Each residence comes with a dedicated laundry area.

Storage Room
Ample room to allow for a clutter-free home.

Floor to Ceiling Windows
Stunning views flood each interior space with natural light and provide an inspiring backdrop throughout each home.

Private Terrace
Escape to a relaxing, private outdoor haven that offers the perfect setting to savor a delicious barbecue under a starlit Arabian sky.



Upper floor



Lower floor



ONE PALM

Managed by

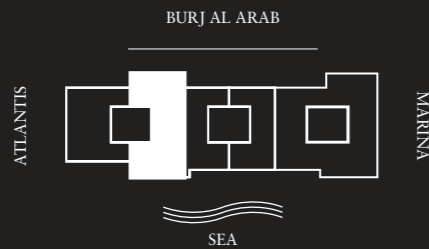
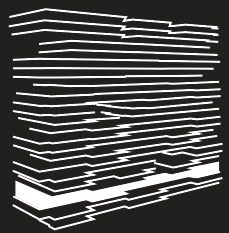
Dorchester Collection

4 Bedroom Residence

Unit 302 – 3rd Floor

4 Bedrooms – 4 Bathrooms – 4 Parking Spaces

Residence	4,050 sq. ft.	376 sq. mt.
Terrace	736 sq. ft.	68 sq. mt.
Total	4,786 sq. ft.	445 sq. mt.



Features

Private and Semi-Private Lift Lobby
Step into your lift lobby designed by acclaimed Japanese designer firm Super Potato, this area will create an environment of tranquility before you even enter your stunning residence.

Grand Main Entrance
A magnificent grand foyer serves as an impressive first step into a home of remarkable distinction.

Show Kitchen and Preparation Kitchen
Fully fitted Italian kitchen from Varenna by Poliform, integrated Gaggenau cooking, cooling and cleaning appliances supported by a European preparation kitchen with integrated Miele appliances.

Formal Dining
Entertain guests in an environment of inspired elegance and charm.

Wardrobes
Beautifully crafted walk-in closets and wardrobes by Poliform offer generous storage for every bedroom.

En-suite Rooms with Balcony/Juliet Balcony
A sumptuous, completely private space with the most impressive views.

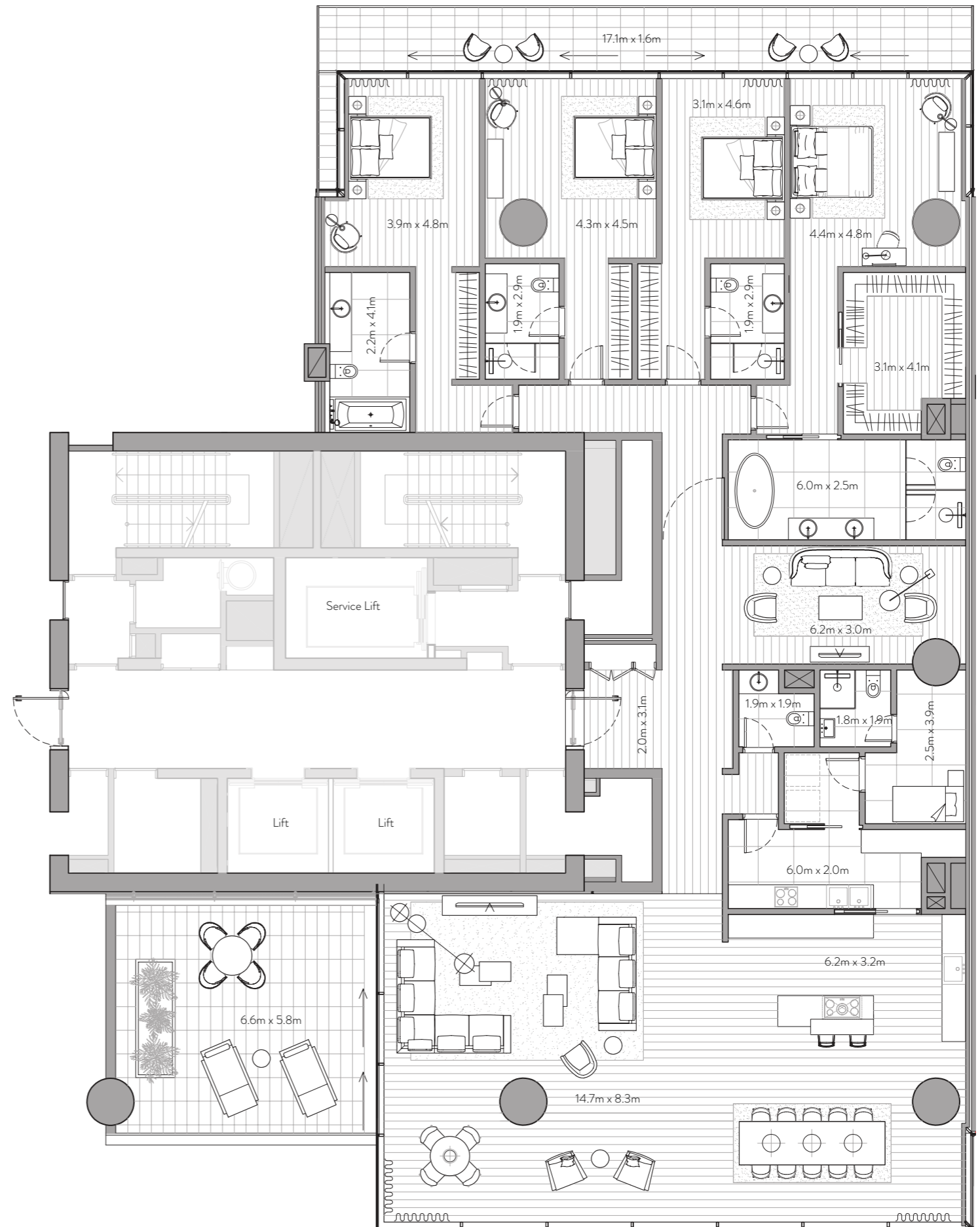
Maid's Room and Bathroom
Private quarters for maids allow for complete ease of living.

Laundry Room
Each residence comes with a dedicated laundry area.

Storage Room
Ample room to allow for a clutter-free home.

Floor to Ceiling Windows
Stunning views flood each interior space with natural light and provide an inspiring backdrop throughout each home.

Private Terrace
Escape to a relaxing, private outdoor haven that offers the perfect setting to savor a delicious barbecue under a starlit Arabian sky.





ONE PALM

Managed by

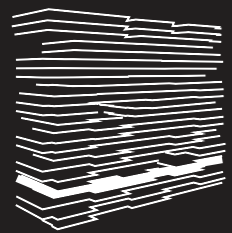
Dorchester Collection

3 Bedroom Residence

Unit 401 – 4th Floor

3 Bedrooms – 3 Bathrooms – 3 Parking Spaces

Residence	2,751 sq. ft.	256 sq. mt.
Terrace	1,580 sq. ft.	147 sq. mt.
Total	4,331 sq. ft.	402 sq. mt.



4th Floor



Features

Private and Semi-Private Lift Lobby
Step into your lift lobby designed by acclaimed Japanese designer firm Super Potato, this area will create an environment of tranquility before you even enter your stunning residence.

Grand Main Entrance
A magnificent grand foyer serves as an impressive first step into a home of remarkable distinction.

Show Kitchen and Preparation Kitchen
Fully fitted Italian kitchen from Varenna by Poliform, integrated Gaggenau cooking, cooling and cleaning appliances supported by a European preparation kitchen with integrated Miele appliances.

Formal Dining
Entertain guests in an environment of inspired elegance and charm.

Wardrobes
Beautifully crafted walk-in closets and wardrobes by Poliform offer generous storage for every bedroom.

En-suite Rooms with Balcony/Juliet Balcony
A sumptuous, completely private space with the most impressive views.

Maid's Room and Bathroom
Private quarters for maids allow for complete ease of living.

Laundry Room
Each residence comes with a dedicated laundry area.

Storage Room
Ample room to allow for a clutter-free home.

Floor to Ceiling Windows
Stunning views flood each interior space with natural light and provide an inspiring backdrop throughout each home.

Private Terrace
Escape to a relaxing, private outdoor haven that offers the perfect setting to savor a delicious barbecue under a starlit Arabian sky.





ONE PALM

Managed by

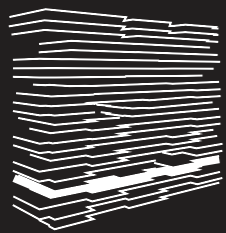
Dorchester Collection

4 Bedroom Residence

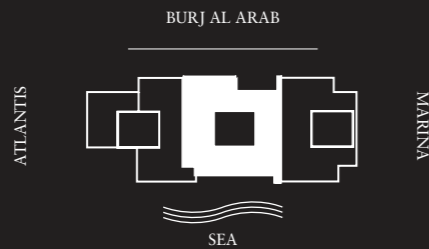
Unit 402 – 4th Floor

4 Bedrooms – 4 Bathrooms – 4 Parking Spaces

Residence	4,737 sq. ft.	440 sq. mt.
Terrace	3,253 sq. ft.	302 sq. mt.
Total	7,990 sq. ft.	742 sq. mt.



4th Floor



Features

Private and Semi-Private Lift Lobby
Step into your lift lobby designed by acclaimed Japanese designer firm Super Potato, this area will create an environment of tranquility before you even enter your stunning residence.

Grand Main Entrance
A magnificent grand foyer serves as an impressive first step into a home of remarkable distinction.

Show Kitchen and Preparation Kitchen
Fully fitted Italian kitchen from Varenna by Poliform, integrated Gaggenau cooking, cooling and cleaning appliances supported by a European preparation kitchen with integrated Miele appliances.

Formal Dining
Entertain guests in an environment of inspired elegance and charm.

Wardrobes
Beautifully crafted walk-in closets and wardrobes by Poliform offer generous storage for every bedroom.

En-suite Rooms with Balcony/Juliet Balcony
A sumptuous, completely private space with the most

Maid's Room and Bathroom
Private quarters for maids allow for complete ease of living.

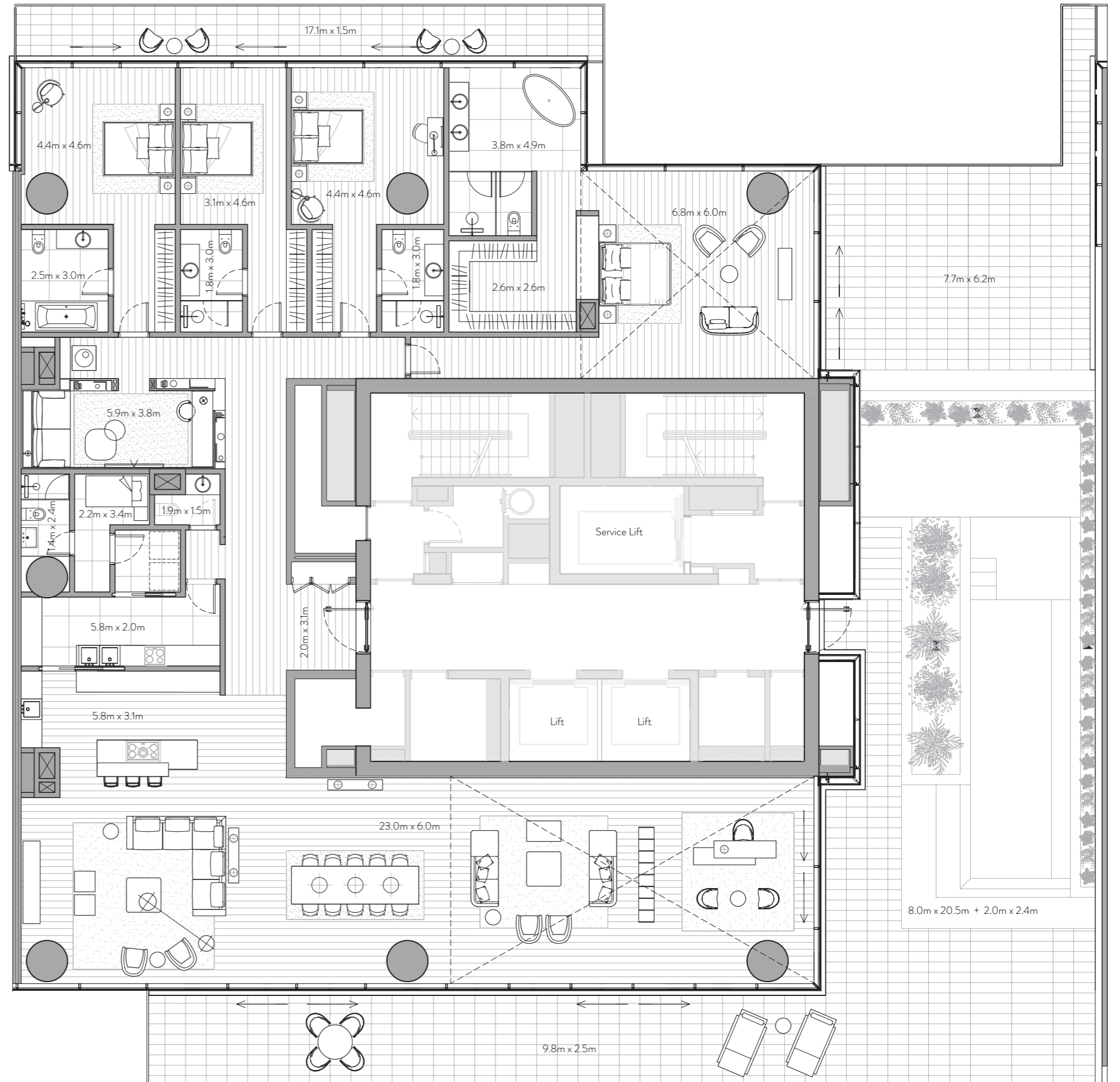
Laundry Room
Each residence comes with a dedicated laundry area.

Storage Room
Ample room to allow for a clutter-free home.

Floor to Ceiling Windows
Stunning views flood each interior space with natural light and provide an inspiring backdrop throughout each home.

Private Terrace
Escape to a relaxing, private outdoor haven that offers the perfect setting to savor a delicious barbecue under a starlit Arabian sky.

Pool
Unwind from the privacy of your own infinity pool, surrounded by lush landscaping, the ideal place to enjoy splendid vistas of Dubai Marina and Palm Jumeirah.





ONE PALM

Managed by

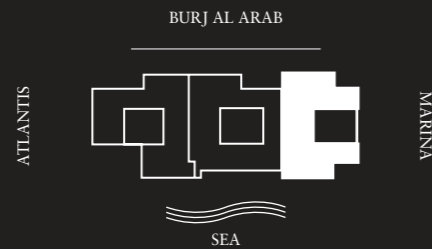
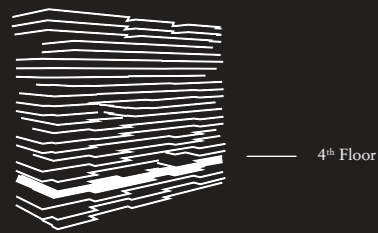
Dorchester Collection

4 Bedroom Residence

Unit 403 – 4th Floor

4 Bedrooms – 4 Bathrooms – 4 Parking Spaces

Residence	4,731 sq. ft.	439 sq. mt.
Terrace	792 sq. ft.	74 sq. mt.
Total	5,523 sq. ft.	513 sq. mt.



Features

Private and Semi-Private Lift Lobby
Step into your lift lobby designed by acclaimed Japanese designer firm Super Potato, this area will create an environment of tranquility before you even enter your stunning residence.

Grand Main Entrance
A magnificent grand foyer serves as an impressive first step into a home of remarkable distinction.

Show Kitchen and Preparation Kitchen
Fully fitted Italian kitchen from Varenna by Poliform, integrated Gaggenau cooking, cooling and cleaning appliances supported by a European preparation kitchen with integrated Miele appliances.

Formal Dining
Entertain guests in an environment of inspired elegance and charm.

Wardrobes
Beautifully crafted walk-in closets and wardrobes by Poliform offer generous storage for every bedroom.

En-suite Rooms with Balcony/Juliet Balcony
A sumptuous, completely private space with the most impressive views.

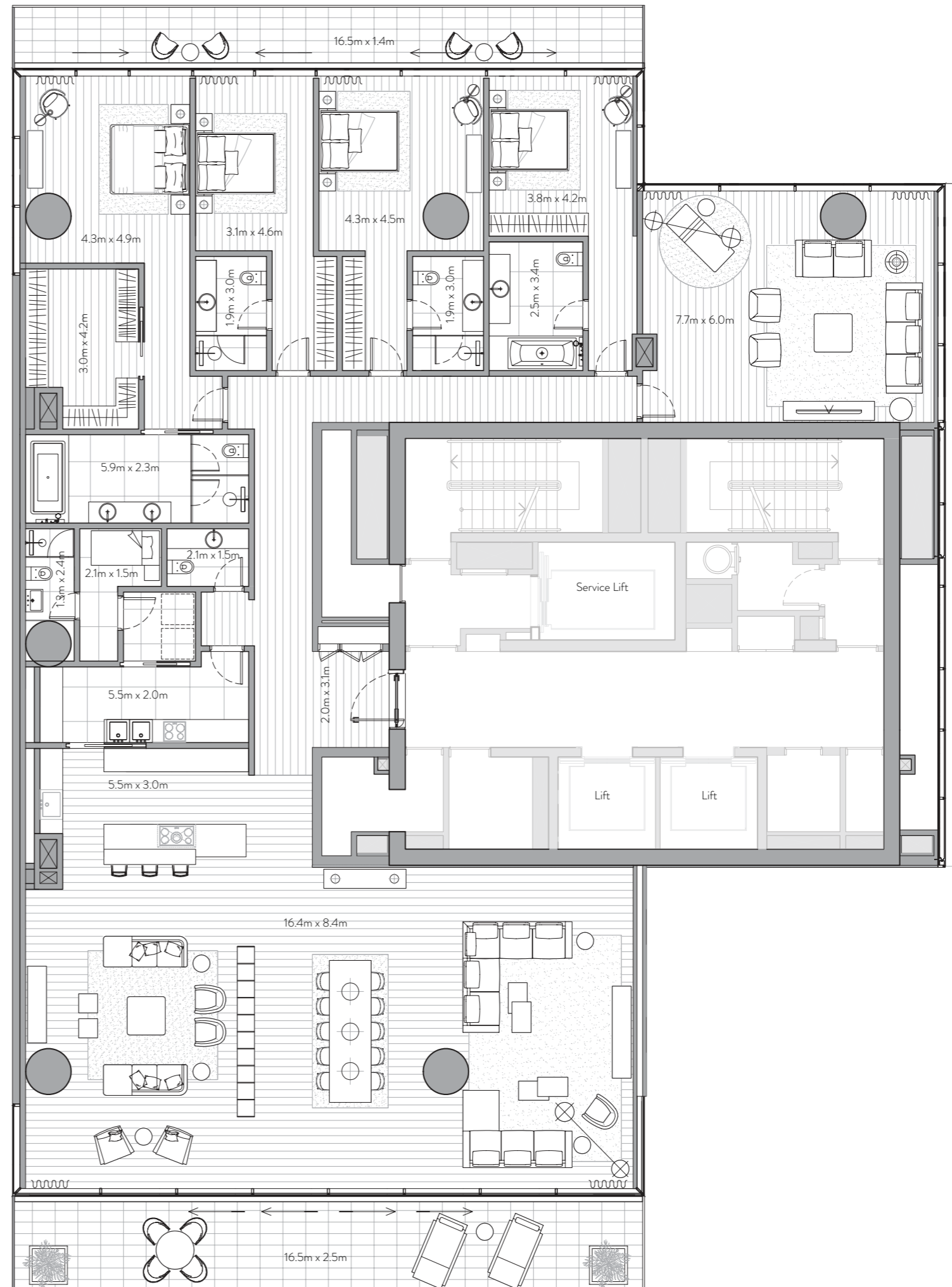
Maid's Room and Bathroom
Private quarters for maids allow for complete ease of living.

Laundry Room
Each residence comes with a dedicated laundry area.

Storage Room
Ample room to allow for a clutter-free home.

Floor to Ceiling Windows
Stunning views flood each interior space with natural light and provide an inspiring backdrop throughout each home.

Private Terrace
Escape to a relaxing, private outdoor haven that offers the perfect setting to savor a delicious barbecue under a starlit Arabian sky.





ONE PALM

Managed by

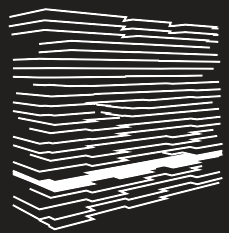
Dorchester Collection

4 Bedroom Residence

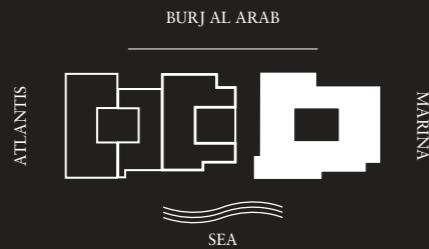
Unit 504 – 5th Floor

4 Bedrooms – 4 Bathrooms – 4 Parking Spaces

Residence	4,473 sq. ft.	416 sq. mt.
Terrace	5,627 sq. ft.	523 sq. mt.
Total	10,100 sq. ft.	938 sq. mt.



5th Floor



Features

Private and Semi-Private Lift Lobby
Step into your lift lobby designed by acclaimed Japanese designer firm Super Potato, this area will create an environment of tranquility before you even enter your stunning residence.

Grand Main Entrance
A magnificent grand foyer serves as an impressive first step into a home of remarkable distinction.

Show Kitchen and Preparation Kitchen
Fully fitted Italian kitchen from Varenna by Poliform, integrated Gaggenau cooking, cooling and cleaning appliances supported by a European preparation kitchen with integrated Miele appliances.

Formal Dining
Entertain guests in an environment of inspired elegance and charm.

Wardrobes
Beautifully crafted walk-in closets and wardrobes by Poliform offer generous storage for every bedroom.

En-suite Rooms with Balcony/Juliet Balcony
A sumptuous, completely private space with the most

Maid's Room and Bathroom
Private quarters for maids allow for complete ease of living.

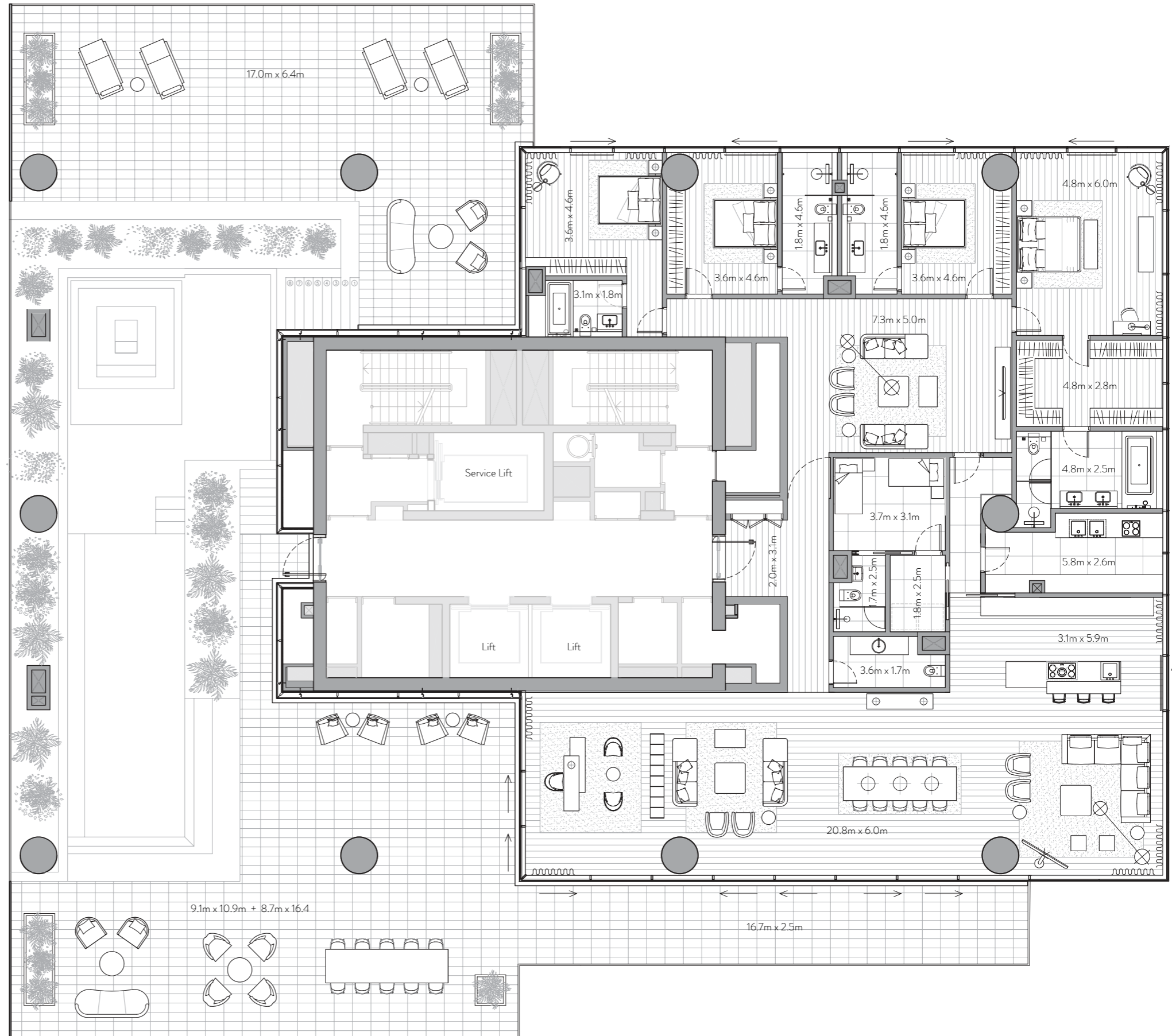
Laundry Room
Each residence comes with a dedicated laundry area.

Storage Room
Ample room to allow for a clutter-free home.

Floor to Ceiling Windows
Stunning views flood each interior space with natural light and provide an inspiring backdrop throughout each home.

Private Terrace
Escape to a relaxing, private outdoor haven that offers the perfect setting to savor a delicious barbecue under a starlit Arabian sky.

Pool
Unwind from the privacy of your own infinity pool, surrounded by lush landscaping, the ideal place to enjoy splendid vistas of Dubai Marina and Palm Jumeirah.





ONE PALM

Managed by

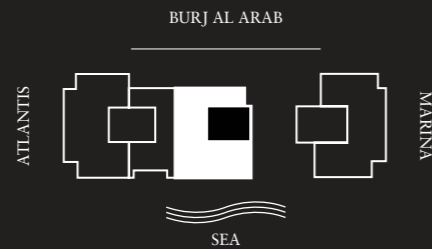
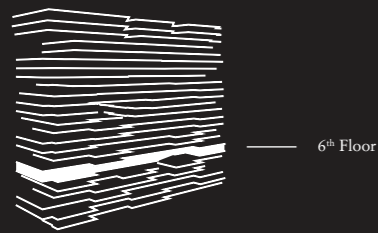
Dorchester Collection

4 Bedroom Residence

Unit 603 – 6th Floor

4 Bedrooms – 4 Bathrooms – 4 Parking Spaces

Residence	4,815 sq. ft.	447 sq. mt.
Terrace	690 sq. ft.	64 sq. mt.
Total	5,505 sq. ft.	511 sq. mt.



Features

Private and Semi-Private Lift Lobby
Step into your lift lobby designed by acclaimed Japanese designer firm Super Potato, this area will create an environment of tranquility before you even enter your stunning residence.

Grand Main Entrance
A magnificent grand foyer serves as an impressive first step into a home of remarkable distinction.

Show Kitchen and Preparation Kitchen
Fully fitted Italian kitchen from Varenna by Poliform, integrated Gaggenau cooking, cooling and cleaning appliances supported by a European preparation kitchen with integrated Miele appliances.

Formal Dining
Entertain guests in an environment of inspired elegance and charm.

Wardrobes
Beautifully crafted walk-in closets and wardrobes by Poliform offer generous storage for every bedroom.

En-suite Rooms with Balcony/Juliet Balcony
A sumptuous, completely private space with the most impressive views.

Maid's Room and Bathroom
Private quarters for maids allow for complete ease of living.

Laundry Room
Each residence comes with a dedicated laundry area.

Storage Room
Ample room to allow for a clutter-free home.

Floor to Ceiling Windows
Stunning views flood each interior space with natural light and provide an inspiring backdrop throughout each home.

Private Terrace
Escape to a relaxing, private outdoor haven that offers the perfect setting to savor a delicious barbecue under a starlit Arabian sky.





ONE PALM

Managed by

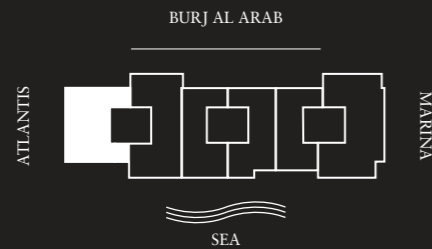
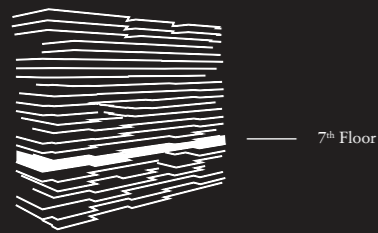
Dorchester Collection

4 Bedroom Duplex

Unit 701 – 7th / 8th Floor

4 Bedrooms – 4 Bathrooms – 4 Parking Spaces

Residence	4,411 sq. ft.	410 sq. mt.
Terrace	1,918 sq. ft.	178 sq. mt.
Total	6,329 sq. ft.	588 sq. mt.



Features

Private and Semi-Private Lift Lobby
Step into your lift lobby designed by acclaimed Japanese designer firm Super Potato, this area will create an environment of tranquility before you even enter your stunning residence.

Grand Main Entrance
A magnificent grand foyer serves as an impressive first step into a home of remarkable distinction.

Show Kitchen and Preparation Kitchen
Fully fitted Italian kitchen from Varenna by Poliform, integrated Gaggenau cooking, cooling and cleaning appliances supported by a European preparation kitchen with integrated Miele appliances.

Formal Dining
Entertain guests in an environment of inspired elegance and charm.

Wardrobes
Beautifully crafted walk-in closets and wardrobes by Poliform offer generous storage for every bedroom.

En-suite Rooms with Balcony/Juliet Balcony
A sumptuous, completely private space with the most impressive views.

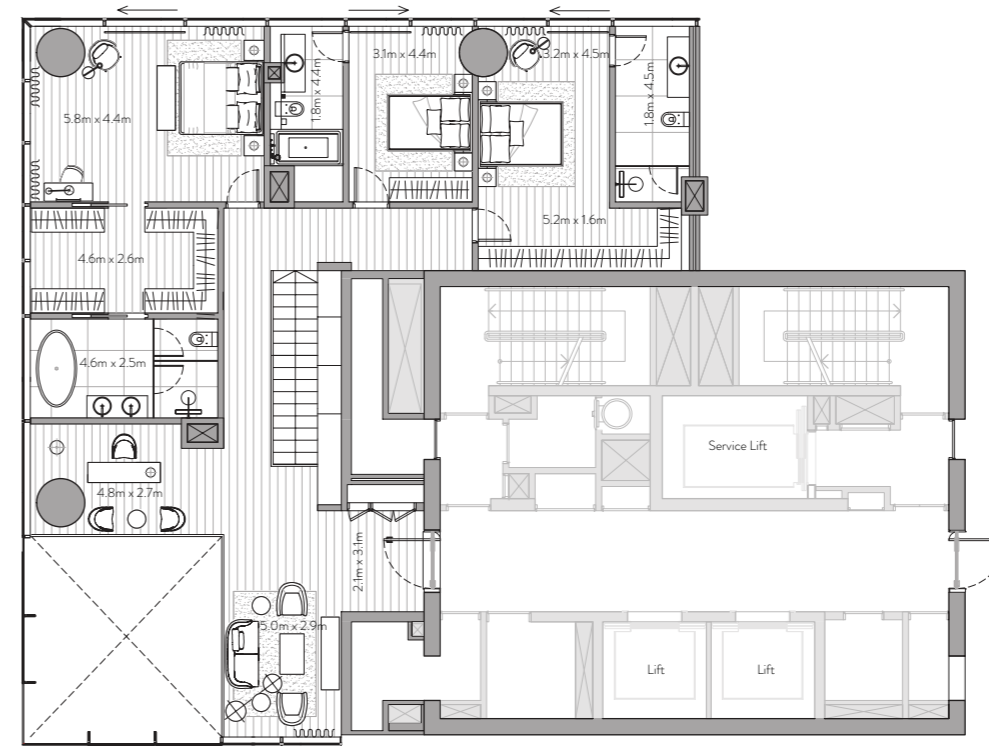
Maid's Room and Bathroom
Private quarters for maids allow for complete ease of living.

Laundry Room
Each residence comes with a dedicated laundry area.

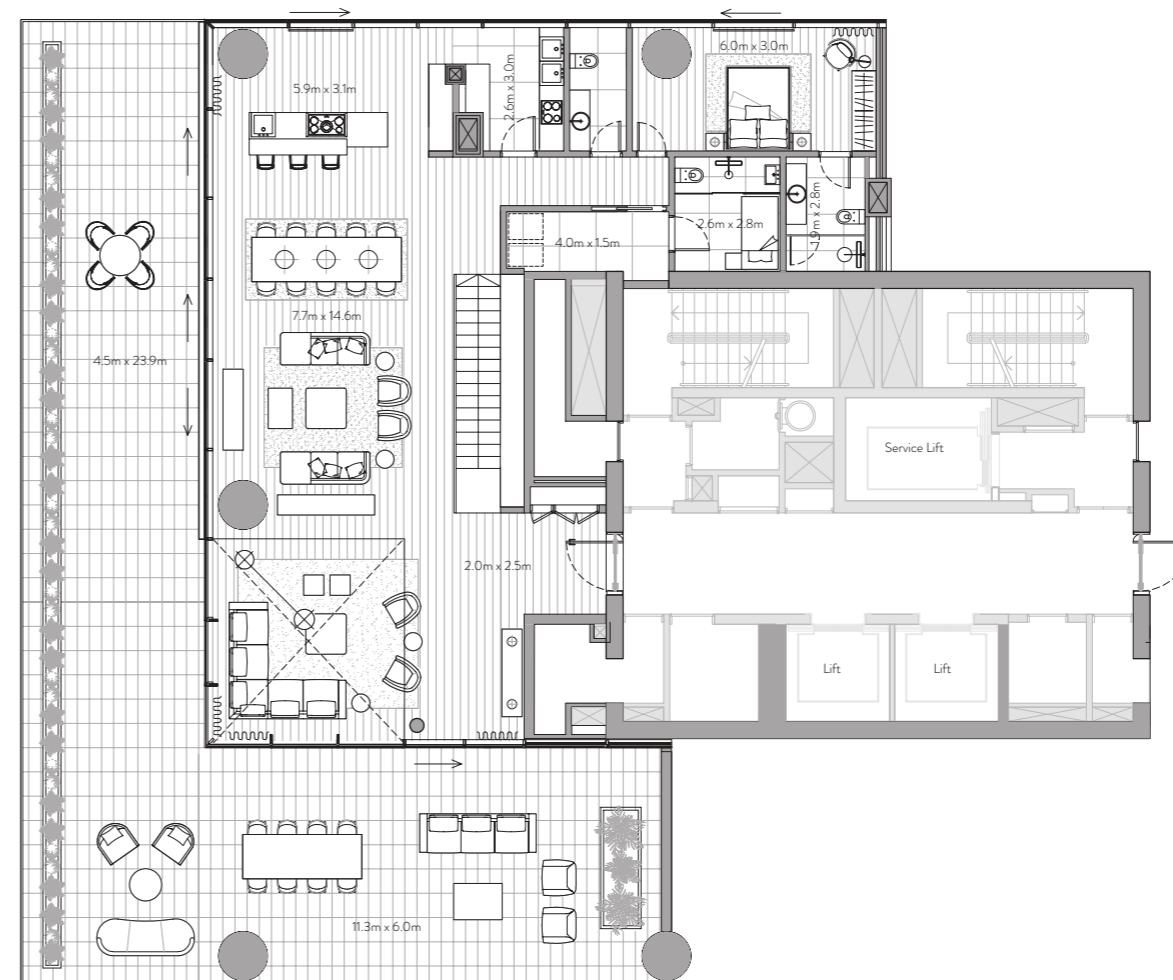
Storage Room
Ample room to allow for a clutter-free home.

Floor to Ceiling Windows
Stunning views flood each interior space with natural light and provide an inspiring backdrop throughout each home.

Private Terrace
Escape to a relaxing, private outdoor haven that offers the perfect setting to savor a delicious barbecue under a starlit Arabian sky.



Upper floor



Lower floor



ONE PALM

Managed by

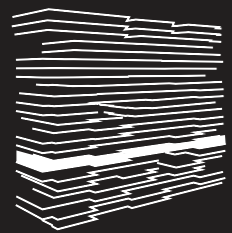
Dorchester Collection

3 Bedroom Residence

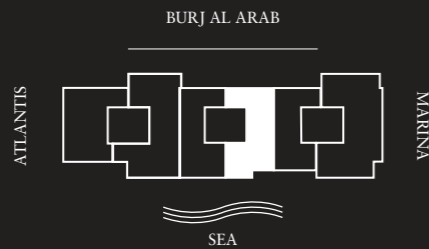
Unit 704 – 7th Floor

3 Bedrooms – 3 Bathrooms – 3 Parking Spaces

Residence	3,074 sq. ft.	286 sq. mt.
Terrace	480 sq. ft.	45 sq. mt.
Total	3,554 sq. ft.	330 sq. mt.



7th Floor



Features

Private and Semi-Private Lift Lobby
Step into your lift lobby designed by acclaimed Japanese designer firm Super Potato, this area will create an environment of tranquility before you even enter your stunning residence.

Grand Main Entrance
A magnificent grand foyer serves as an impressive first step into a home of remarkable distinction.

Show Kitchen and Preparation Kitchen
Fully fitted Italian kitchen from Varenna by Poliform, integrated Gaggenau cooking, cooling and cleaning appliances supported by a European preparation kitchen with integrated Miele appliances.

Formal Dining
Entertain guests in an environment of inspired elegance and charm.

Wardrobes
Beautifully crafted walk-in closets and wardrobes by Poliform offer generous storage for every bedroom.

En-suite Rooms with Balcony/Juliet Balcony
A sumptuous, completely private space with the most impressive views.

Maid's Room and Bathroom
Private quarters for maids allow for complete ease of living.

Laundry Room
Each residence comes with a dedicated laundry area.

Storage Room
Ample room to allow for a clutter-free home.

Floor to Ceiling Windows
Stunning views flood each interior space with natural light and provide an inspiring backdrop throughout each home.

Private Terrace
Escape to a relaxing, private outdoor haven that offers the perfect setting to savor a delicious barbecue under a starlit Arabian sky.





ONE PALM

Managed by

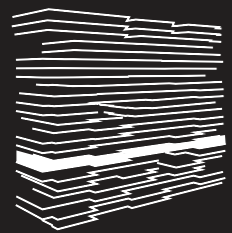
Dorchester Collection

4 Bedroom Residence

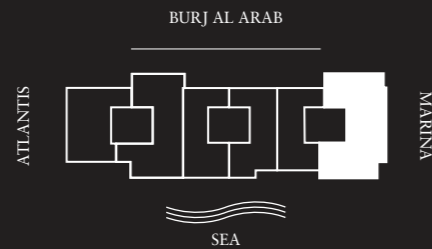
Unit 706 – 7th Floor

4 Bedrooms – 4 Bathrooms – 4 Parking Spaces

Residence	4,375 sq. ft.	406 sq. mt.
Terrace	1,877 sq. ft.	174 sq. mt.
Total	6,252 sq. ft.	581 sq. mt.



7th Floor



Features

Private and Semi-Private Lift Lobby
Step into your lift lobby designed by acclaimed Japanese designer firm Super Potato, this area will create an environment of tranquility before you even enter your stunning residence.

Grand Main Entrance
A magnificent grand foyer serves as an impressive first step into a home of remarkable distinction.

Show Kitchen and Preparation Kitchen
Fully fitted Italian kitchen from Varenna by Poliform, integrated Gaggenau cooking, cooling and cleaning appliances supported by a European preparation kitchen with integrated Miele appliances.

Formal Dining
Entertain guests in an environment of inspired elegance and charm.

Wardrobes
Beautifully crafted walk-in closets and wardrobes by Poliform offer generous storage for every bedroom.

En-suite Rooms with Balcony/Juliet Balcony
A sumptuous, completely private space with the most impressive views.

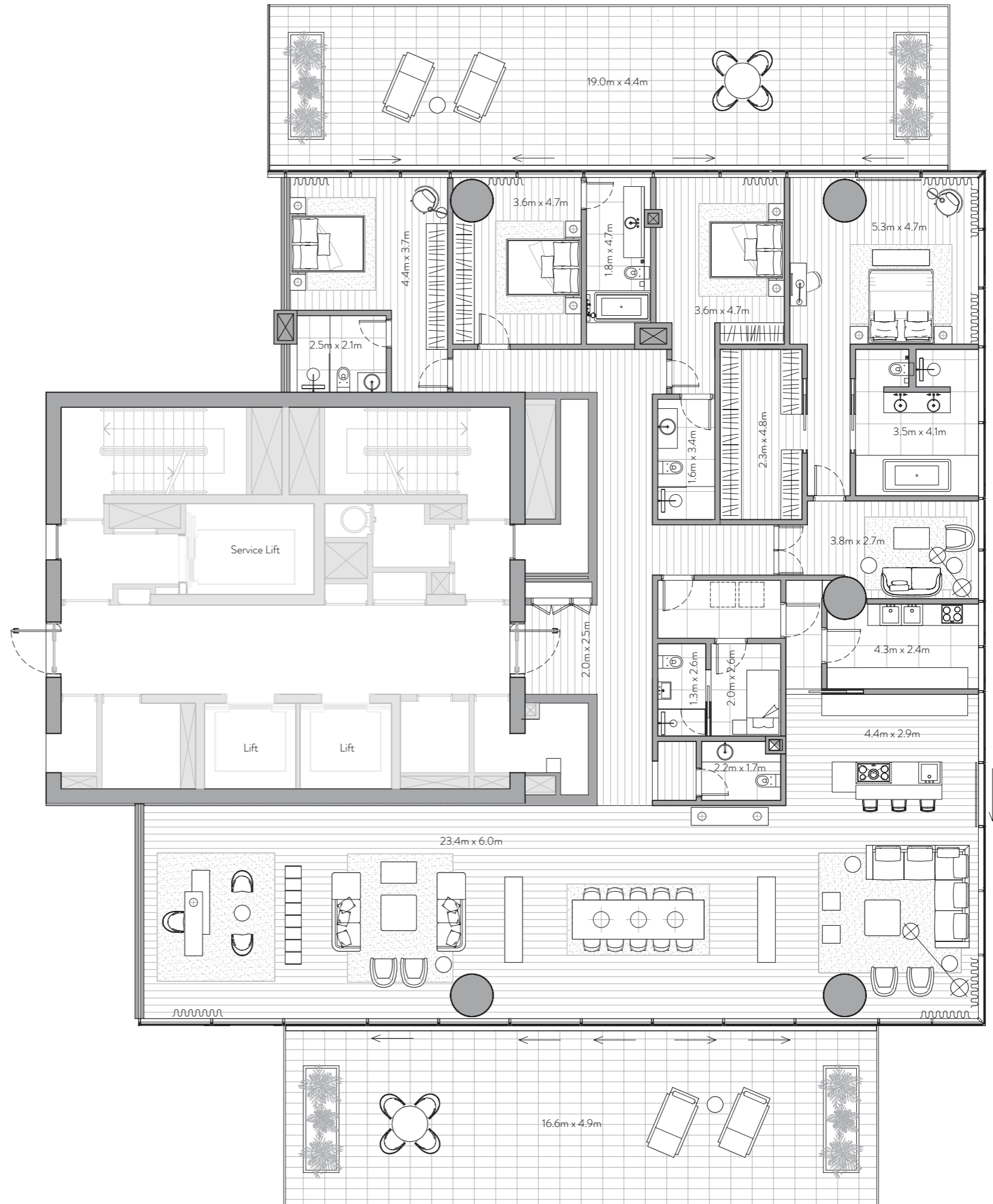
Maid's Room and Bathroom
Private quarters for maids allow for complete ease of living.

Laundry Room
Each residence comes with a dedicated laundry area.

Storage Room
Ample room to allow for a clutter-free home.

Floor to Ceiling Windows
Stunning views flood each interior space with natural light and provide an inspiring backdrop throughout each home.

Private Terrace
Escape to a relaxing, private outdoor haven that offers the perfect setting to savor a delicious barbecue under a starlit Arabian sky.





ONE PALM

Managed by

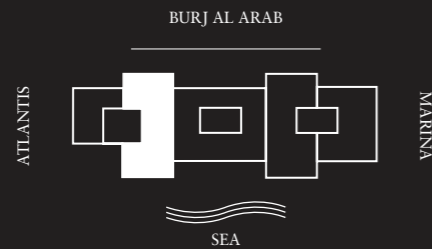
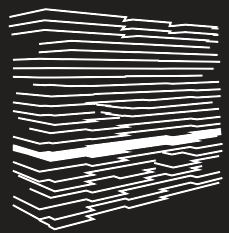
Dorchester Collection

3 Bedroom Residence

Unit 801 – 8th Floor

3 Bedrooms – 3 Bathrooms – 3 Parking Spaces

Residence	2,973 sq. ft.	276 sq. mt.
Terrace	1,690 sq. ft.	157 sq. mt.
Total	4,663 sq. ft.	433 sq. mt.



Features

Private and Semi-Private Lift Lobby
Step into your lift lobby designed by acclaimed Japanese designer firm Super Potato, this area will create an environment of tranquility before you even enter your stunning residence.

Grand Main Entrance
A magnificent grand foyer serves as an impressive first step into a home of remarkable distinction.

Show Kitchen and Preparation Kitchen
Fully fitted Italian kitchen from Varenna by Poliform, integrated Gaggenau cooking, cooling and cleaning appliances supported by a European preparation kitchen with integrated Miele appliances.

Formal Dining
Entertain guests in an environment of inspired elegance and charm.

Wardrobes
Beautifully crafted walk-in closets and wardrobes by Poliform offer generous storage for every bedroom.

En-suite Rooms with Balcony/Juliet Balcony
A sumptuous, completely private space with the most impressive views.

Maid's Room and Bathroom
Private quarters for maids allow for complete ease of living.

Laundry Room
Each residence comes with a dedicated laundry area.

Storage Room
Ample room to allow for a clutter-free home.

Floor to Ceiling Windows
Stunning views flood each interior space with natural light and provide an inspiring backdrop throughout each home.

Private Terrace
Escape to a relaxing, private outdoor haven that offers the perfect setting to savor a delicious barbecue under a starlit Arabian sky.





ONE PALM

Managed by

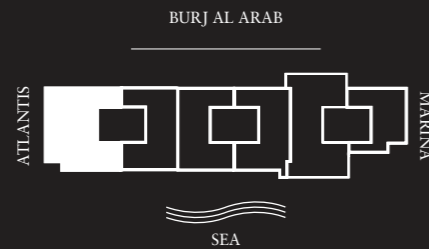
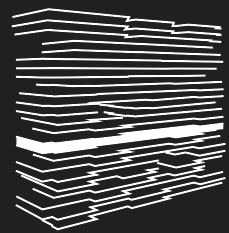
Dorchester Collection

4 Bedroom Residence

Unit 901 – 9th Floor

4 Bedrooms – 4 Bathrooms – 4 Parking Spaces

Residence	4,496 sq. ft.	418 sq. mt.
Terrace	1,010 sq. ft.	94 sq. mt.
Total	5,506 sq. ft.	512 sq. mt.



Features

Private and Semi-Private Lift Lobby
Step into your lift lobby designed by acclaimed Japanese designer firm Super Potato, this area will create an environment of tranquility before you even enter your stunning residence.

Grand Main Entrance
A magnificent grand foyer serves as an impressive first step into a home of remarkable distinction.

Show Kitchen and Preparation Kitchen
Fully fitted Italian kitchen from Varenna by Poliform, integrated Gaggenau cooking, cooling and cleaning appliances supported by a European preparation kitchen with integrated Miele appliances.

Formal Dining
Entertain guests in an environment of inspired elegance and charm.

Wardrobes
Beautifully crafted walk-in closets and wardrobes by Poliform offer generous storage for every bedroom.

En-suite Rooms with Balcony/Juliet Balcony
A sumptuous, completely private space with the most impressive views.

Maid's Room and Bathroom
Private quarters for maids allow for complete ease of living.

Laundry Room
Each residence comes with a dedicated laundry area.

Storage Room
Ample room to allow for a clutter-free home.

Floor to Ceiling Windows
Stunning views flood each interior space with natural light and provide an inspiring backdrop throughout each home.

Private Terrace
Escape to a relaxing, private outdoor haven that offers the perfect setting to savor a delicious barbecue under a starlit Arabian sky.





ONE PALM

Managed by

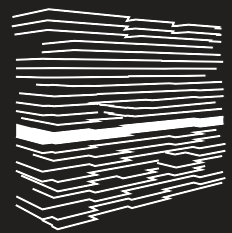
Dorchester Collection

4 Bedroom Duplex Unit

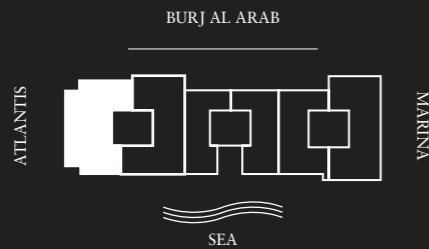
Unit 1001 – 10th / 11th Floor

4 Bedrooms – 4 Bathrooms – 4 Parking Spaces

Residence	4,414 sq. ft.	410 sq. mt.
Terrace	2,755 sq. ft.	256 sq. mt.
Total	7,169 sq. ft.	666 sq. mt.



10th Floor



Features

Private and Semi-Private Lift Lobby
Step into your lift lobby designed by acclaimed Japanese designer firm Super Potato, this area will create an environment of tranquility before you even enter your stunning residence.

Grand Main Entrance
A magnificent grand foyer serves as an impressive first step into a home of remarkable distinction.

Show Kitchen and Preparation Kitchen
Fully fitted Italian kitchen from Varenna by Poliform, integrated Gaggenau cooking, cooling and cleaning appliances supported by a European preparation kitchen with integrated Miele appliances.

Formal Dining
Entertain guests in an environment of inspired elegance and charm.

Wardrobes
Beautifully crafted walk-in closets and wardrobes by Poliform offer generous storage for every bedroom.

En-suite Rooms with Balcony/Juliet Balcony
A sumptuous, completely private space with the most impressive views.

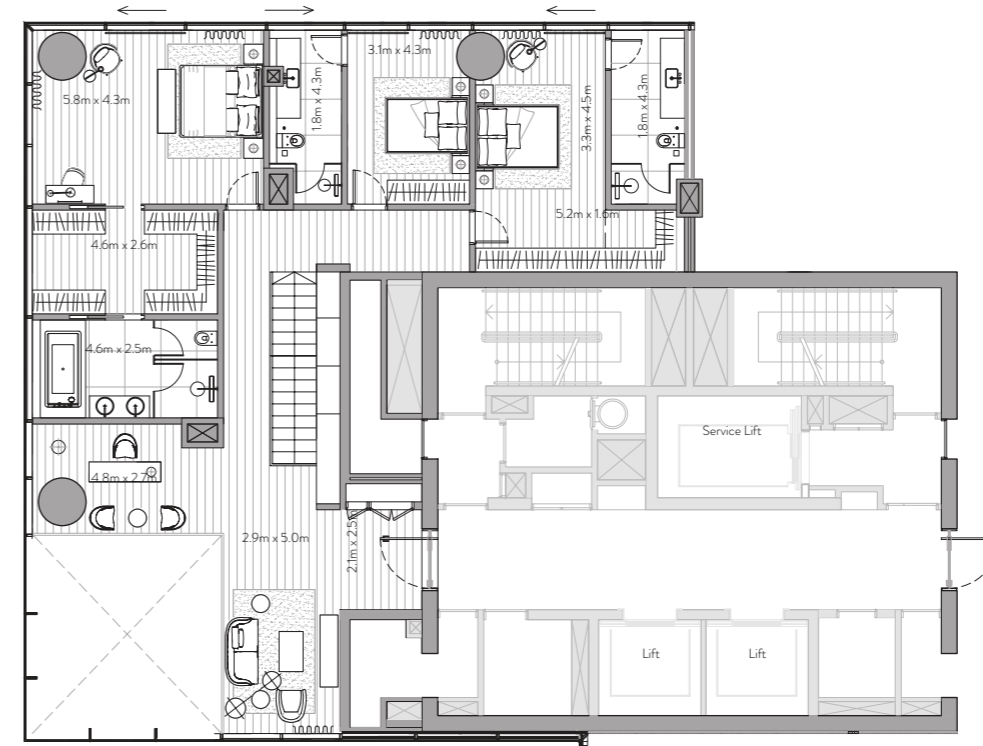
Maid's Room and Bathroom
Private quarters for maids allow for complete ease of living.

Laundry Room
Each residence comes with a dedicated laundry area.

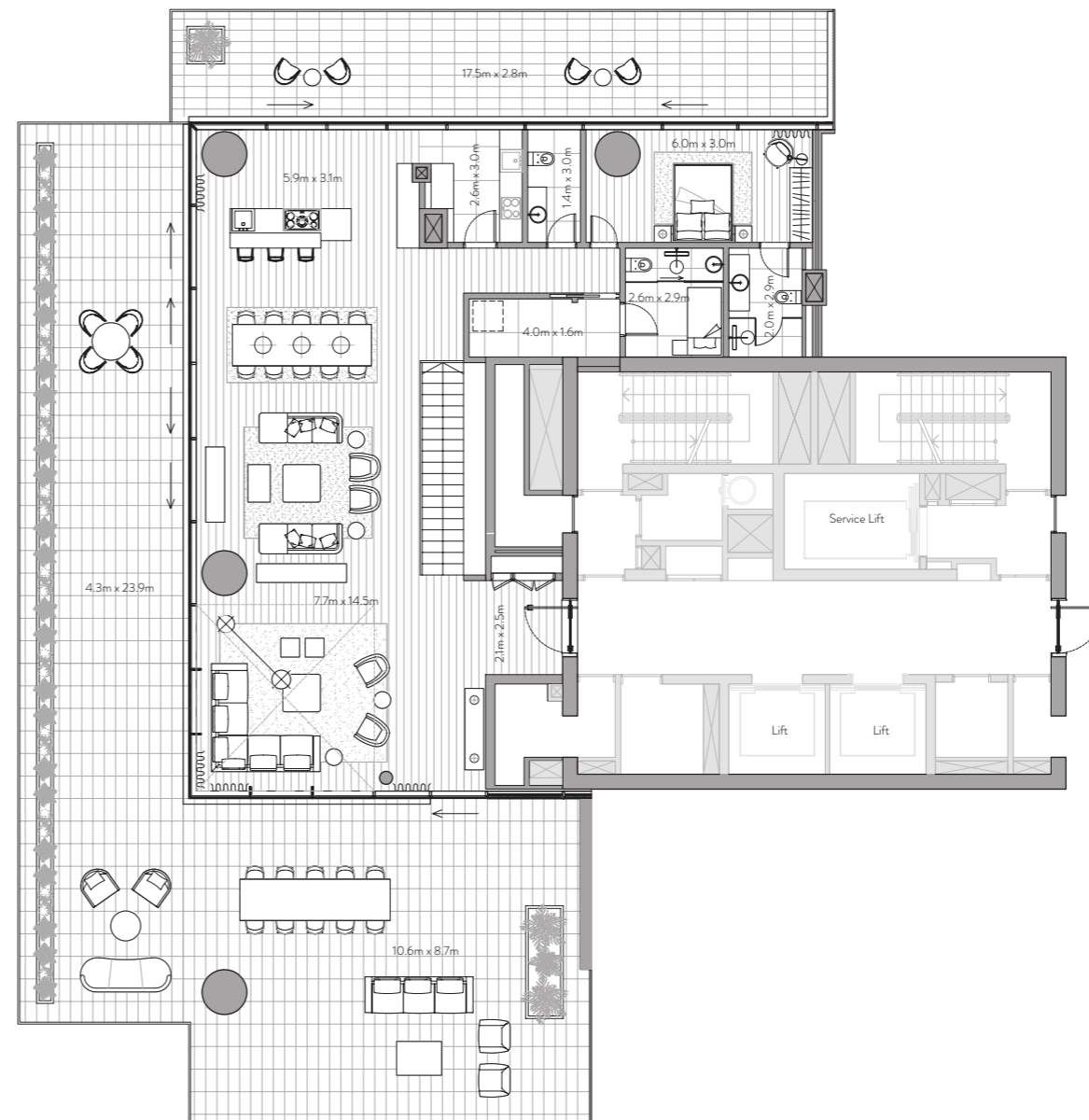
Storage Room
Ample room to allow for a clutter-free home.

Floor to Ceiling Windows
Stunning views flood each interior space with natural light and provide an inspiring backdrop throughout each home.

Private Terrace
Escape to a relaxing, private outdoor haven that offers the perfect setting to savor a delicious barbecue under a starlit Arabian sky.



Upper floor



Lower floor



ONE PALM

Managed by

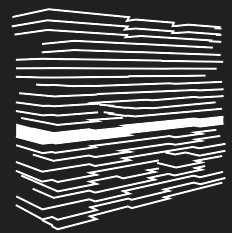
Dorchester Collection

4 Bedroom Residence

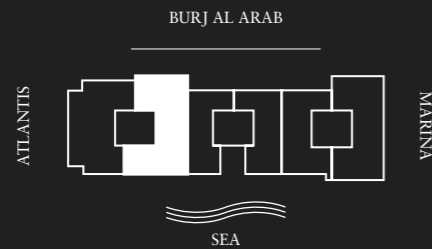
Unit 1002 – 10th Floor

4 Bedrooms – 4 Bathrooms – 4 Parking Spaces

Residence	3,971 sq. ft.	369 sq. mt.
Terrace	954 sq. ft.	89 sq. mt.
Total	4,925 sq. ft.	458 sq. mt.



10th Floor



Features

Private and Semi-Private Lift Lobby
Step into your lift lobby designed by acclaimed Japanese designer firm Super Potato, this area will create an environment of tranquility before you even enter your stunning residence.

Grand Main Entrance
A magnificent grand foyer serves as an impressive first step into a home of remarkable distinction.

Show Kitchen and Preparation Kitchen
Fully fitted Italian kitchen from Varenna by Poliform, integrated Gaggenau cooking, cooling and cleaning appliances supported by a European preparation kitchen with integrated Miele appliances.

Formal Dining
Entertain guests in an environment of inspired elegance and charm.

Wardrobes
Beautifully crafted walk-in closets and wardrobes by Poliform offer generous storage for every bedroom.

En-suite Rooms with Balcony/Juliet Balcony
A sumptuous, completely private space with the most impressive views.

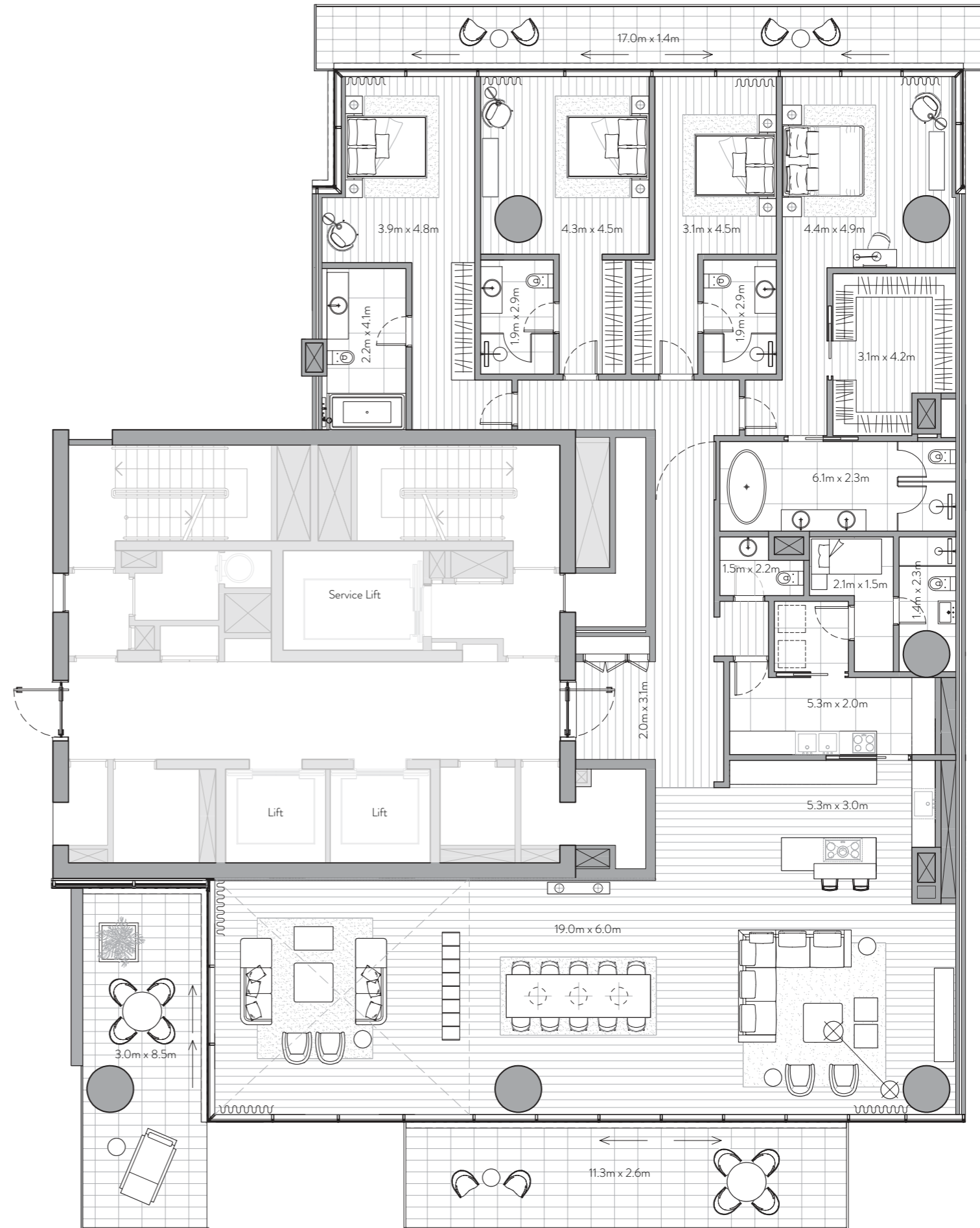
Maid's Room and Bathroom
Private quarters for maids allow for complete ease of living.

Laundry Room
Each residence comes with a dedicated laundry area.

Storage Room
Ample room to allow for a clutter-free home.

Floor to Ceiling Windows
Stunning views flood each interior space with natural light and provide an inspiring backdrop throughout each home.

Private Terrace
Escape to a relaxing, private outdoor haven that offers the perfect setting to savor a delicious barbecue under a starlit Arabian sky.





ONE PALM

Managed by

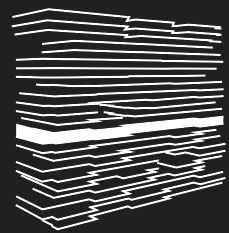
Dorchester Collection

4 Bedroom Residence

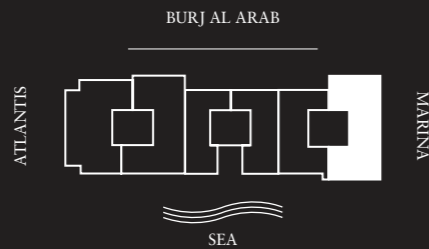
Unit 1006 – 10th Floor

4 Bedrooms – 4 Bathrooms – 4 Parking Spaces

Residence	4,234 sq. ft.	393 sq. mt.
Terrace	792 sq. ft.	74 sq. mt.
Total	5,026 sq. ft.	467 sq. mt.



10th Floor



Features

Private and Semi-Private Lift Lobby
Step into your lift lobby designed by acclaimed Japanese designer firm Super Potato, this area will create an environment of tranquility before you even enter your stunning residence.

Grand Main Entrance
A magnificent grand foyer serves as an impressive first step into a home of remarkable distinction.

Show Kitchen and Preparation Kitchen
Fully fitted Italian kitchen from Varenna by Poliform, integrated Gaggenau cooking, cooling and cleaning appliances supported by a European preparation kitchen with integrated Miele appliances.

Formal Dining
Entertain guests in an environment of inspired elegance and charm.

Wardrobes
Beautifully crafted walk-in closets and wardrobes by Poliform offer generous storage for every bedroom.

En-suite Rooms with Balcony/Juliet Balcony
A sumptuous, completely private space with the most impressive views.

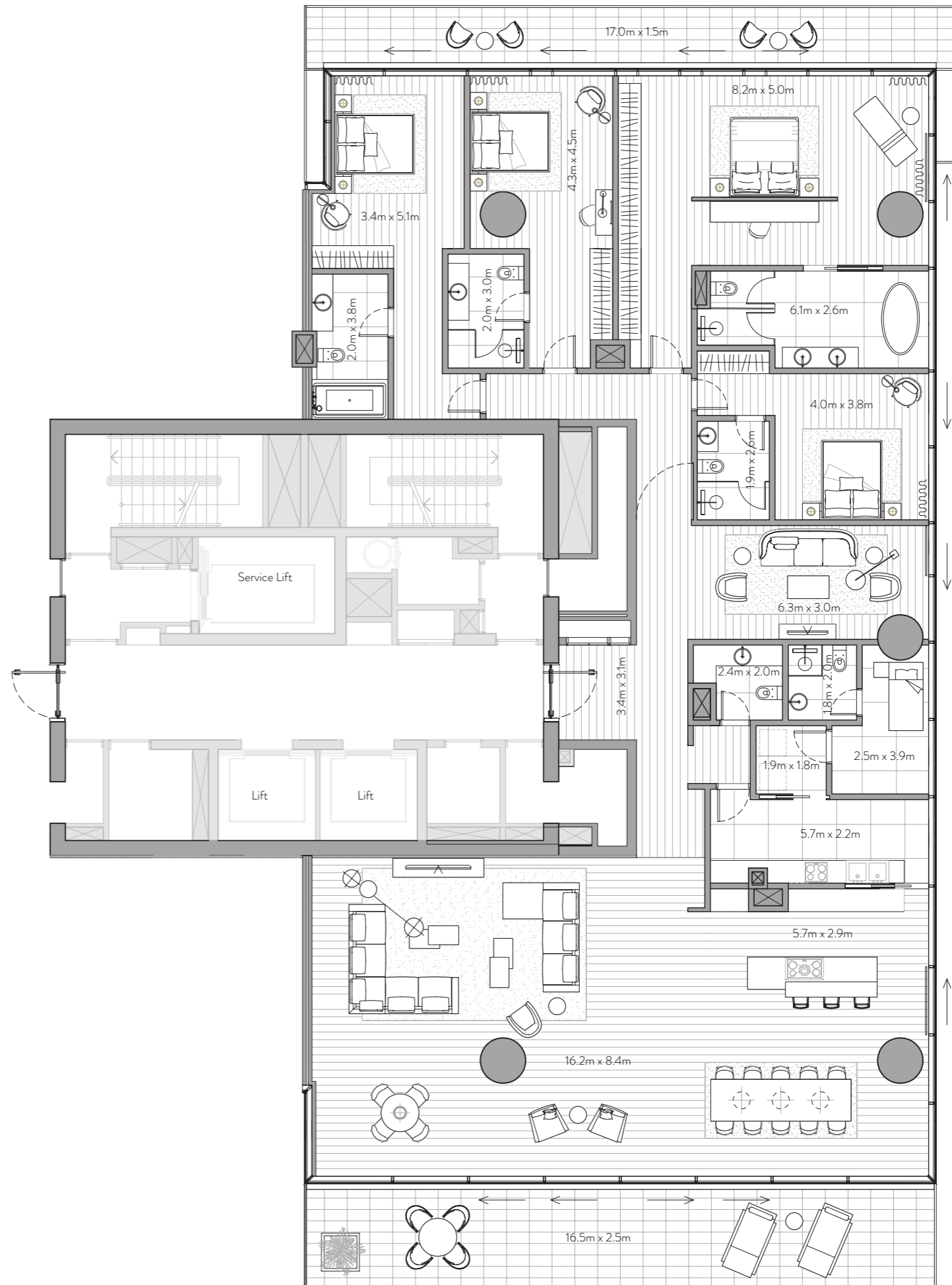
Maid's Room and Bathroom
Private quarters for maids allow for complete ease of living.

Laundry Room
Each residence comes with a dedicated laundry area.

Storage Room
Ample room to allow for a clutter-free home.

Floor to Ceiling Windows
Stunning views flood each interior space with natural light and provide an inspiring backdrop throughout each home.

Private Terrace
Escape to a relaxing, private outdoor haven that offers the perfect setting to savor a delicious barbecue under a starlit Arabian sky.





ONE PALM

Managed by

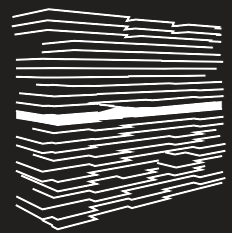
Dorchester Collection

4 Bedroom Residence

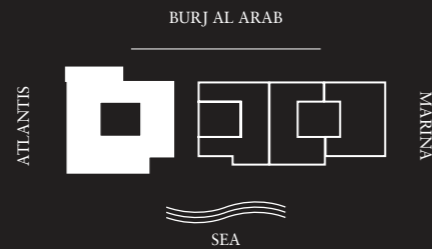
Unit 1201 – 12th Floor

4 Bedrooms – 4 Bathrooms – 4 Parking Spaces

Residence	4,911 sq. ft.	456 sq. mt.
Terrace	3,811 sq. ft.	354 sq. mt.
Total	8,722 sq. ft.	810 sq. mt.



12th Floor



Features

Private and Semi-Private Lift Lobby
Step into your lift lobby designed by acclaimed Japanese designer firm Super Potato, this area will create an environment of tranquility before you even enter your stunning residence.

Grand Main Entrance
A magnificent grand foyer serves as an impressive first step into a home of remarkable distinction.

Show Kitchen and Preparation Kitchen
Fully fitted Italian kitchen from Varenna by Poliform, integrated Gaggenau cooking, cooling and cleaning appliances supported by a European preparation kitchen with integrated Miele appliances.

Formal Dining
Entertain guests in an environment of inspired elegance and charm.

Wardrobes
Beautifully crafted walk-in closets and wardrobes by Poliform offer generous storage for every bedroom.

En-suite Rooms with Balcony/Juliet Balcony
A sumptuous, completely private space with the most

Maid's Room and Bathroom
Private quarters for maids allow for complete ease of living.

Laundry Room
Each residence comes with a dedicated laundry area.

Storage Room
Ample room to allow for a clutter-free home.

Floor to Ceiling Windows
Stunning views flood each interior space with natural light and provide an inspiring backdrop throughout each home.

Private Terrace
Escape to a relaxing, private outdoor haven that offers the perfect setting to savor a delicious barbecue under a starlit Arabian sky.

Pool
Unwind from the privacy of your own infinity pool, surrounded by lush landscaping, the ideal place to enjoy splendid vistas of Dubai Marina and Palm Jumeirah.





ONE PALM

Managed by

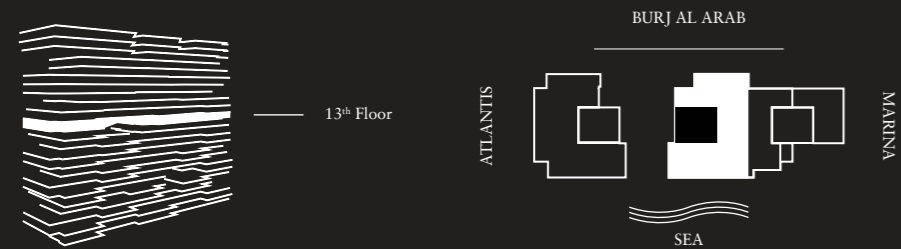
Dorchester Collection

4 Bedroom Residence

Unit 1302 – 13th Floor

4 Bedrooms – 4 Bathrooms – 4 Parking Spaces

Residence	5,318 sq. ft.	494 sq. mt.
Terrace	983 sq. ft.	91 sq. mt.
Total	6,301 sq. ft.	585 sq. mt.



Features

Private and Semi-Private Lift Lobby
Step into your lift lobby designed by acclaimed Japanese designer firm Super Potato, this area will create an environment of tranquility before you even enter your stunning residence.

Grand Main Entrance
A magnificent grand foyer serves as an impressive first step into a home of remarkable distinction.

Show Kitchen and Preparation Kitchen
Fully fitted Italian kitchen from Varenna by Poliform, integrated Gaggenau cooking, cooling and cleaning appliances supported by a European preparation kitchen with integrated Miele appliances.

Formal Dining
Entertain guests in an environment of inspired elegance and charm.

Wardrobes
Beautifully crafted walk-in closets and wardrobes by Poliform offer generous storage for every bedroom.

En-suite Rooms with Balcony/Juliet Balcony
A sumptuous, completely private space with the most impressive views.

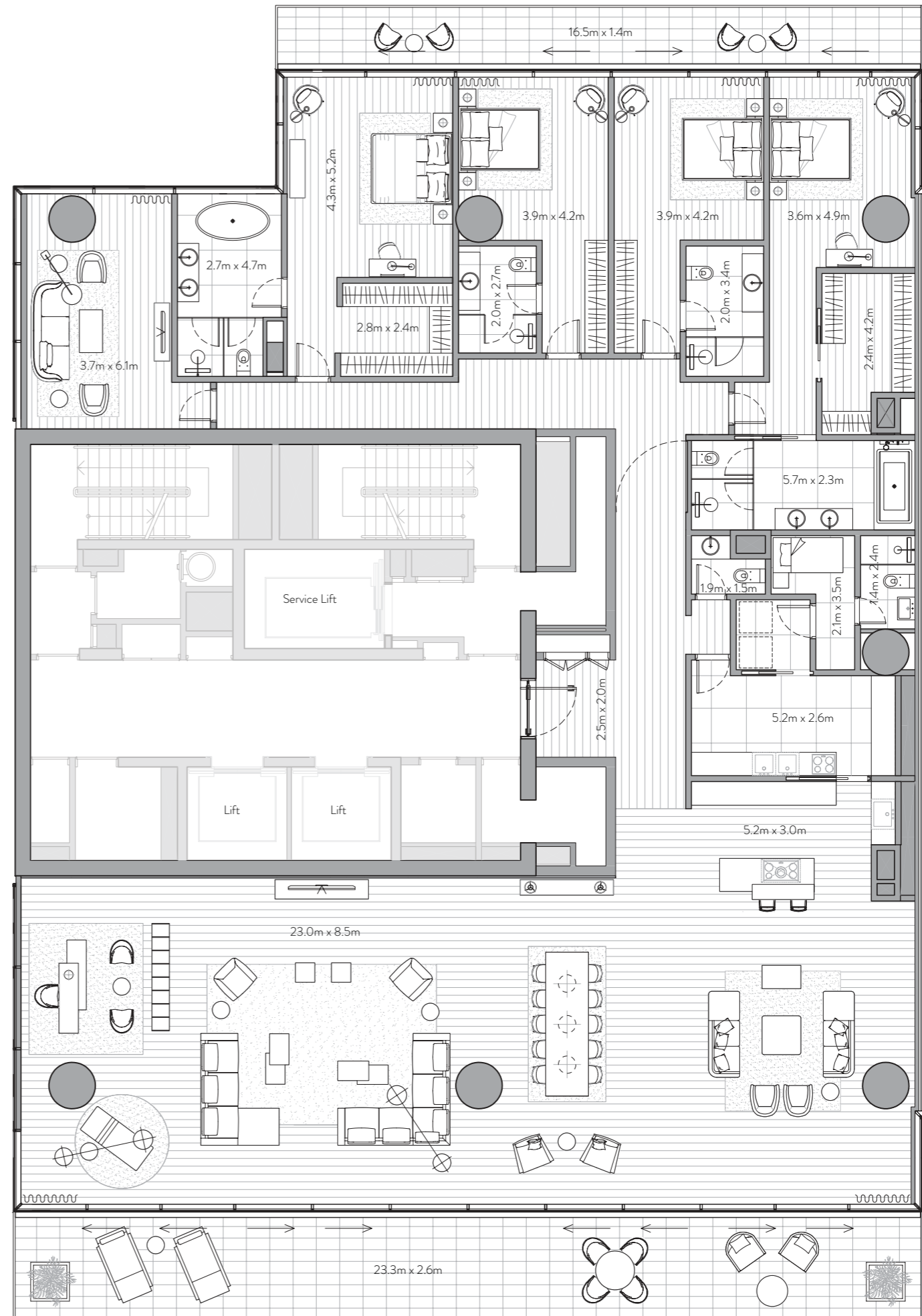
Maid's Room and Bathroom
Private quarters for maids allow for complete ease of living.

Laundry Room
Each residence comes with a dedicated laundry area.

Storage Room
Ample room to allow for a clutter-free home.

Floor to Ceiling Windows
Stunning views flood each interior space with natural light and provide an inspiring backdrop throughout each home.

Private Terrace
Escape to a relaxing, private outdoor haven that offers the perfect setting to savor a delicious barbecue under a starlit Arabian sky.





ONE PALM

Managed by

Dorchester Collection

4 Bedroom Residence

Unit 1401 – 14th Floor

4 Bedrooms – 4 Bathrooms – 4 Parking Spaces

Residence	3,836 sq. ft.	356 sq. mt.
Terrace	2,115 sq. ft.	196 sq. mt.
Total	5,951 sq. ft.	553 sq. mt.



Features

Private and Semi-Private Lift Lobby
Step into your lift lobby designed by acclaimed Japanese designer firm Super Potato, this area will create an environment of tranquility before you even enter your stunning residence.

Grand Main Entrance
A magnificent grand foyer serves as an impressive first step into a home of remarkable distinction.

Show Kitchen and Preparation Kitchen
Fully fitted Italian kitchen from Varenna by Poliform, integrated Gaggenau cooking, cooling and cleaning appliances supported by a European preparation kitchen with integrated Miele appliances.

Formal Dining
Entertain guests in an environment of inspired elegance and charm.

Wardrobes
Beautifully crafted walk-in closets and wardrobes by Poliform offer generous storage for every bedroom.

En-suite Rooms with Balcony/Juliet Balcony
A sumptuous, completely private space with the most impressive views.

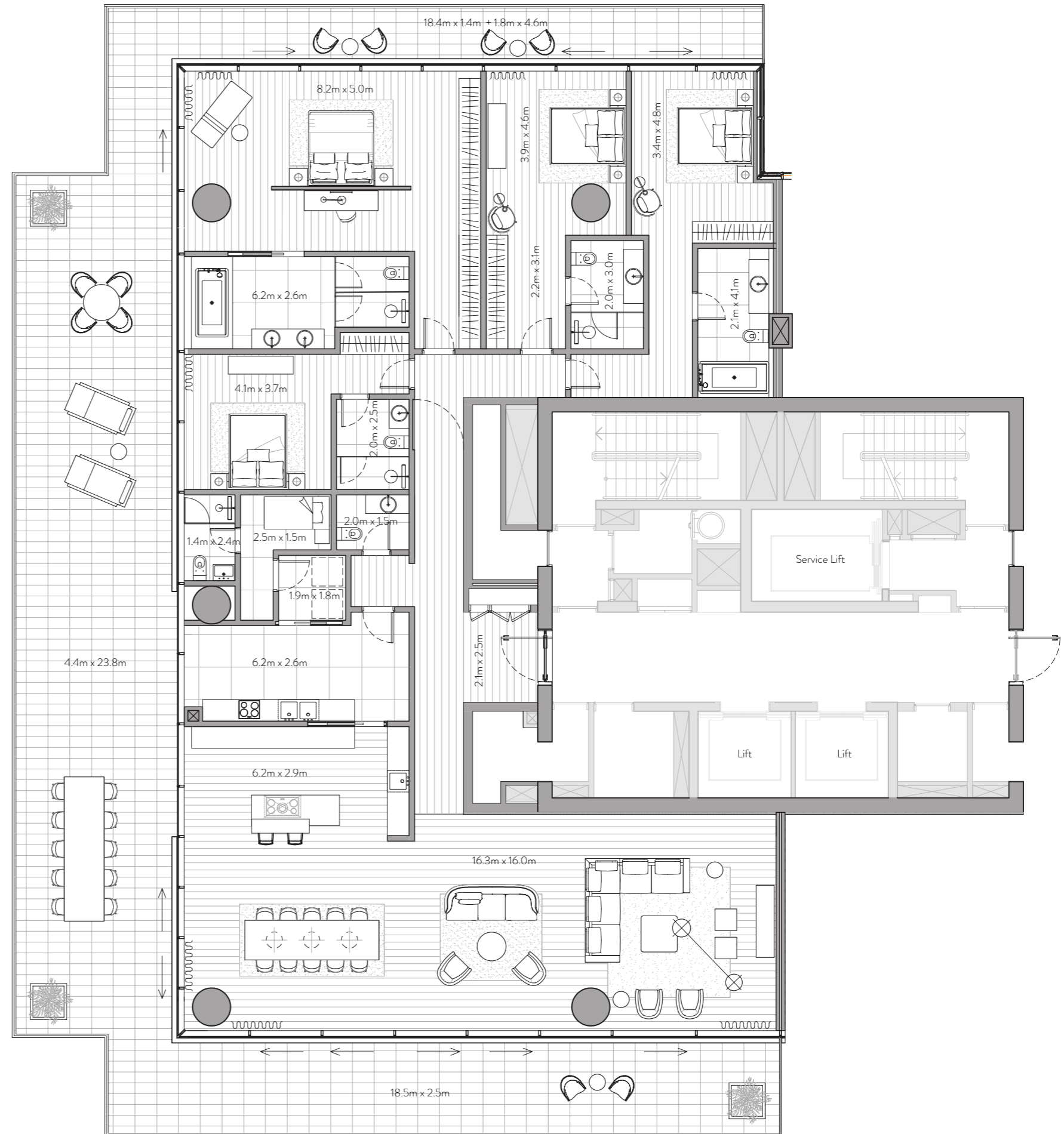
Maid's Room and Bathroom
Private quarters for maids allow for complete ease of living.

Laundry Room
Each residence comes with a dedicated laundry area.

Storage Room
Ample room to allow for a clutter-free home.

Floor to Ceiling Windows
Stunning views flood each interior space with natural light and provide an inspiring backdrop throughout each home.

Private Terrace
Escape to a relaxing, private outdoor haven that offers the perfect setting to savor a delicious barbecue under a starlit Arabian sky.





ONE PALM

Managed by

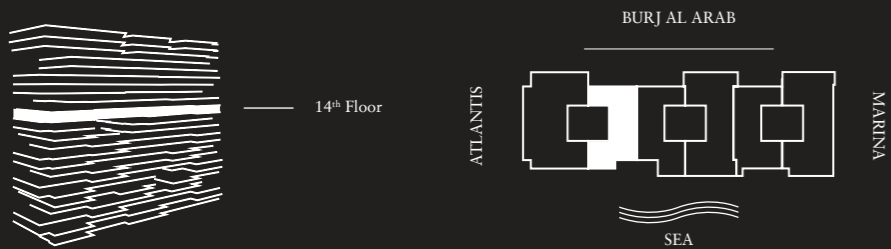
Dorchester Collection

3 Bedroom Residence

Unit 1402 – 14th Floor

3 Bedrooms – 3 Bathrooms – 3 Parking Spaces

Residence	3,079 sq. ft.	286 sq. mt.
Terrace	257 sq. ft.	24 sq. mt.
Total	3,337 sq. ft.	310 sq. mt.



Features

Private and Semi-Private Lift Lobby
Step into your lift lobby designed by acclaimed Japanese designer firm Super Potato, this area will create an environment of tranquility before you even enter your stunning residence.

Grand Main Entrance
A magnificent grand foyer serves as an impressive first step into a home of remarkable distinction.

Show Kitchen and Preparation Kitchen
Fully fitted Italian kitchen from Varenna by Poliform, integrated Gaggenau cooking, cooling and cleaning appliances supported by a European preparation kitchen with integrated Miele appliances.

Formal Dining
Entertain guests in an environment of inspired elegance and charm.

Wardrobes
Beautifully crafted walk-in closets and wardrobes by Poliform offer generous storage for every bedroom.

En-suite Rooms with Balcony/Juliet Balcony
A sumptuous, completely private space with the most impressive views.

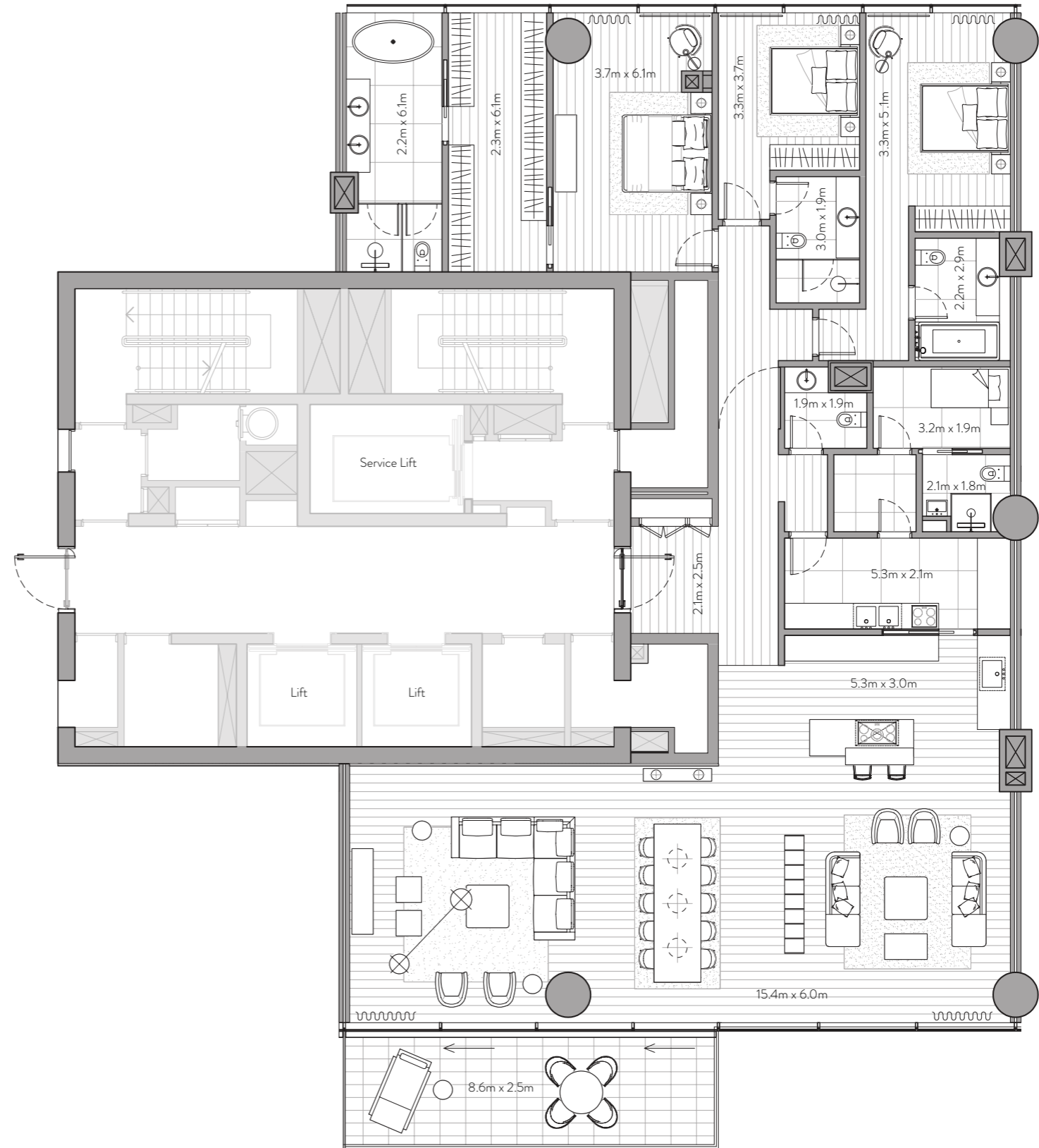
Maid's Room and Bathroom
Private quarters for maids allow for complete ease of living.

Laundry Room
Each residence comes with a dedicated laundry area.

Storage Room
Ample room to allow for a clutter-free home.

Floor to Ceiling Windows
Stunning views flood each interior space with natural light and provide an inspiring backdrop throughout each home.

Private Terrace
Escape to a relaxing, private outdoor haven that offers the perfect setting to savor a delicious barbecue under a starlit Arabian sky.





ONE PALM

Managed by

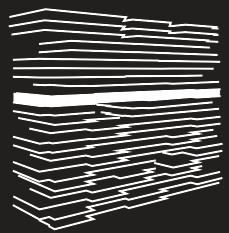
Dorchester Collection

3 Bedroom Residence

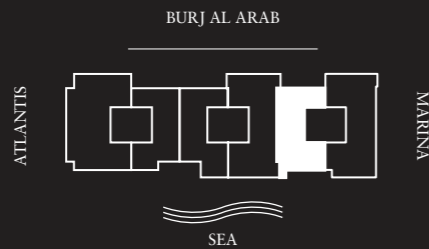
Unit 1405 – 14th Floor

3 Bedrooms – 3 Bathrooms – 3 Parking Spaces

Residence	2,797 sq. ft.	260 sq. mt.
Terrace	733 sq. ft.	68 sq. mt.
Total	3,531 sq. ft.	328 sq. mt.



14th Floor



Features

Private and Semi-Private Lift Lobby
Step into your lift lobby designed by acclaimed Japanese designer firm Super Potato, this area will create an environment of tranquility before you even enter your stunning residence.

Grand Main Entrance
A magnificent grand foyer serves as an impressive first step into a home of remarkable distinction.

Show Kitchen and Preparation Kitchen
Fully fitted Italian kitchen from Varenna by Poliform, integrated Gaggenau cooking, cooling and cleaning appliances supported by a European preparation kitchen with integrated Miele appliances.

Formal Dining
Entertain guests in an environment of inspired elegance and charm.

Wardrobes
Beautifully crafted walk-in closets and wardrobes by Poliform offer generous storage for every bedroom.

En-suite Rooms with Balcony/Juliet Balcony
A sumptuous, completely private space with the most impressive views.

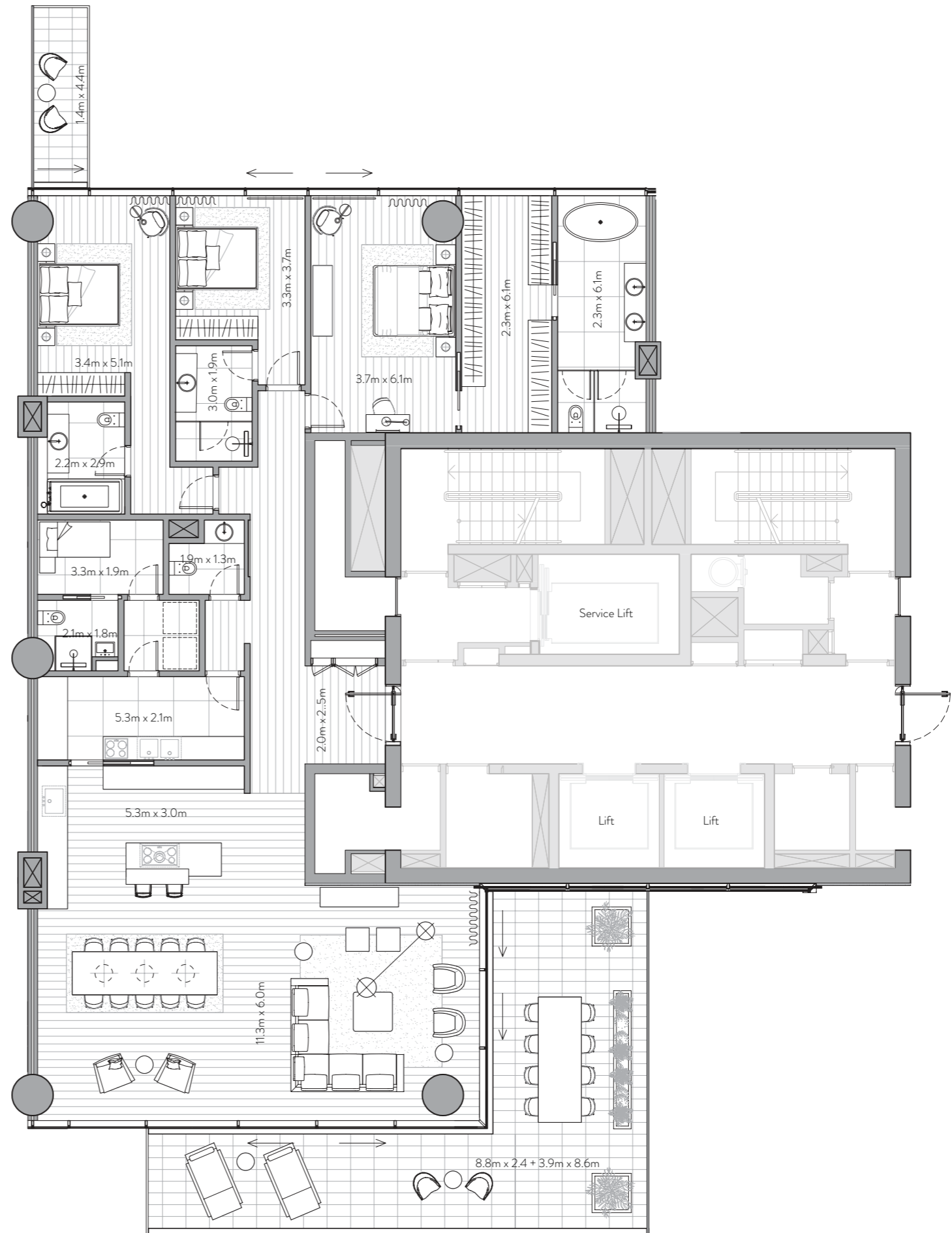
Maid's Room and Bathroom
Private quarters for maids allow for complete ease of living.

Laundry Room
Each residence comes with a dedicated laundry area.

Storage Room
Ample room to allow for a clutter-free home.

Floor to Ceiling Windows
Stunning views flood each interior space with natural light and provide an inspiring backdrop throughout each home.

Private Terrace
Escape to a relaxing, private outdoor haven that offers the perfect setting to savor a delicious barbecue under a starlit Arabian sky.





ONE PALM

Managed by

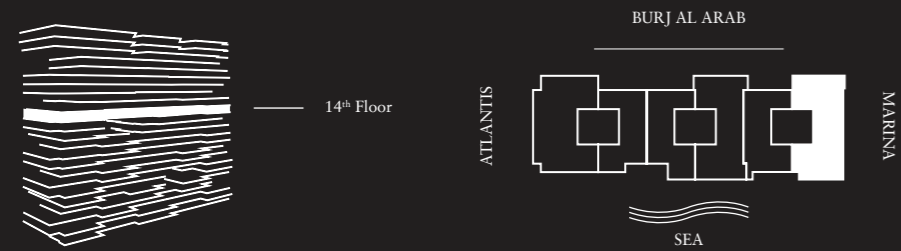
Dorchester Collection

4 Bedroom Residence

Unit 1406 – 14th Floor

4 Bedrooms – 4 Bathrooms – 4 Parking Spaces

Residence	3,856 sq. ft.	358 sq. mt.
Terrace	1,143 sq. ft.	106 sq. mt.
Total	4,999 sq. ft.	464 sq. mt.



Features

Private and Semi-Private Lift Lobby
Step into your lift lobby designed by acclaimed Japanese designer firm Super Potato, this area will create an environment of tranquility before you even enter your stunning residence.

Grand Main Entrance
A magnificent grand foyer serves as an impressive first step into a home of remarkable distinction.

Show Kitchen and Preparation Kitchen
Fully fitted Italian kitchen from Varenna by Poliform, integrated Gaggenau cooking, cooling and cleaning appliances supported by a European preparation kitchen with integrated Miele appliances.

Formal Dining
Entertain guests in an environment of inspired elegance and charm.

Wardrobes
Beautifully crafted walk-in closets and wardrobes by Poliform offer generous storage for every bedroom.

En-suite Rooms with Balcony/Juliet Balcony
A sumptuous, completely private space with the most impressive views.

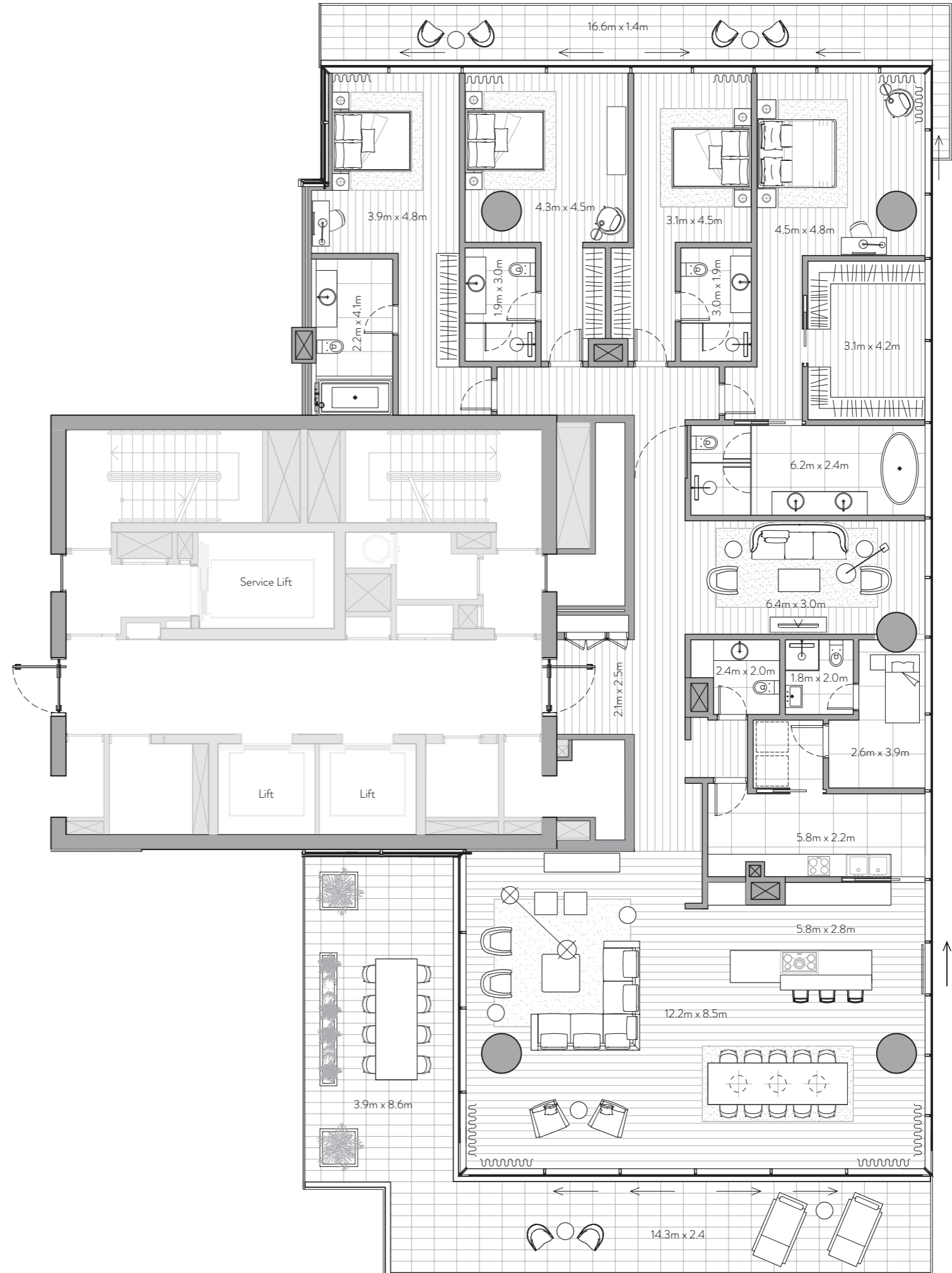
Maid's Room and Bathroom
Private quarters for maids allow for complete ease of living.

Laundry Room
Each residence comes with a dedicated laundry area.

Storage Room
Ample room to allow for a clutter-free home.

Floor to Ceiling Windows
Stunning views flood each interior space with natural light and provide an inspiring backdrop throughout each home.

Private Terrace
Escape to a relaxing, private outdoor haven that offers the perfect setting to savor a delicious barbecue under a starlit Arabian sky.





ONE PALM

Managed by

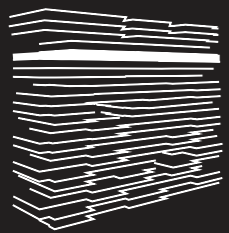
Dorchester Collection

4 Bedroom Residence

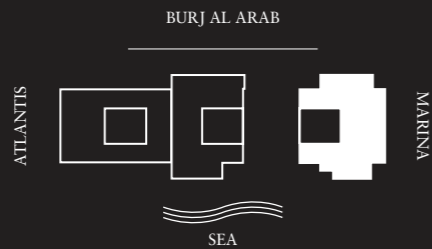
Unit 1903 – 19th Floor

4 Bedrooms – 4 Bathrooms – 4 Parking Spaces

Residence	4,724 sq. ft.	439 sq. mt.
Terrace	1,817 sq. ft.	169 sq. mt.
Total	6,542 sq. ft.	608 sq. mt.



19th Floor



Features

Private and Semi-Private Lift Lobby
Step into your lift lobby designed by acclaimed Japanese designer firm Super Potato, this area will create an environment of tranquility before you even enter your stunning residence.

Grand Main Entrance
A magnificent grand foyer serves as an impressive first step into a home of remarkable distinction.

Show Kitchen and Preparation Kitchen
Fully fitted Italian kitchen from Varenna by Poliform, integrated Gaggenau cooking, cooling and cleaning appliances supported by a European preparation kitchen with integrated Miele appliances.

Formal Dining
Entertain guests in an environment of inspired elegance and charm.

Wardrobes
Beautifully crafted walk-in closets and wardrobes by Poliform offer generous storage for every bedroom.

En-suite Rooms with Balcony/Juliet Balcony
A sumptuous, completely private space with the most impressive views.

Maid's Room and Bathroom
Private quarters for maids allow for complete ease of living.

Laundry Room
Each residence comes with a dedicated laundry area.

Storage Room
Ample room to allow for a clutter-free home.

Floor to Ceiling Windows
Stunning views flood each interior space with natural light and provide an inspiring backdrop throughout each home.

Private Terrace
Escape to a relaxing, private outdoor haven that offers the perfect setting to savor a delicious barbecue under a starlit Arabian sky.





ONE PALM

Managed by

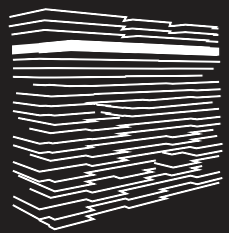
Dorchester Collection

4 Bedroom Residence

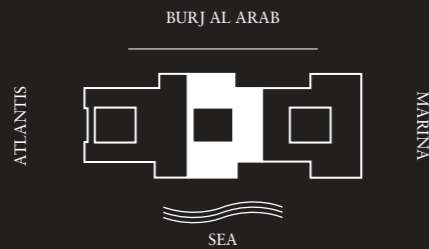
Unit 2002 – 20th Floor

4 Bedrooms – 4 Bathrooms – 4 Parking Spaces

Residence	4,148 sq. ft.	385 sq. mt.
Terrace	1,628 sq. ft.	151 sq. mt.
Total	5,775 sq. ft.	537 sq. mt.



20th Floor



Features

Private and Semi-Private Lift Lobby
Step into your lift lobby designed by acclaimed Japanese designer firm Super Potato, this area will create an environment of tranquility before you even enter your stunning residence.

Grand Main Entrance
A magnificent grand foyer serves as an impressive first step into a home of remarkable distinction.

Show Kitchen and Preparation Kitchen
Fully fitted Italian kitchen from Varenna by Poliform, integrated Gaggenau cooking, cooling and cleaning appliances supported by a European preparation kitchen with integrated Miele appliances.

Formal Dining
Entertain guests in an environment of inspired elegance and charm.

Wardrobes
Beautifully crafted walk-in closets and wardrobes by Poliform offer generous storage for every bedroom.

En-suite Rooms with Balcony/Juliet Balcony
A sumptuous, completely private space with the most impressive views.

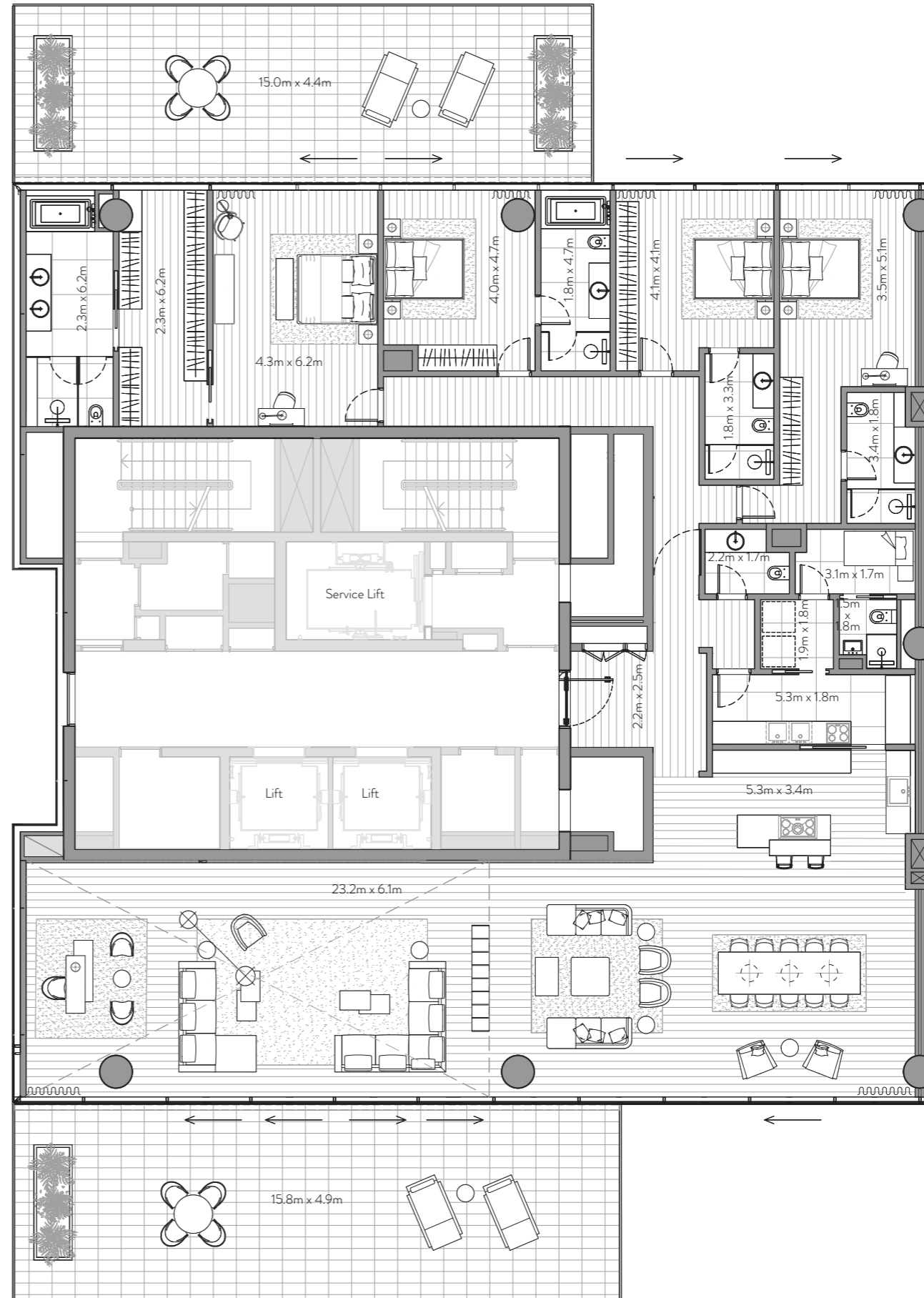
Maid's Room and Bathroom
Private quarters for maids allow for complete ease of living.

Laundry Room
Each residence comes with a dedicated laundry area.

Storage Room
Ample room to allow for a clutter-free home.

Floor to Ceiling Windows
Stunning views flood each interior space with natural light and provide an inspiring backdrop throughout each home.

Private Terrace
Escape to a relaxing, private outdoor haven that offers the perfect setting to savor a delicious barbecue under a starlit Arabian sky.





OMNIYAT®