

NAME THESE BRANDS



1



2



3



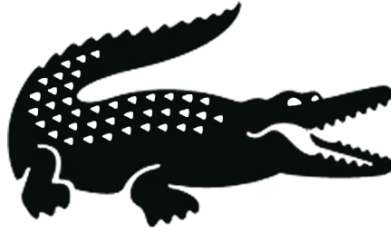
4



5



6



7



8

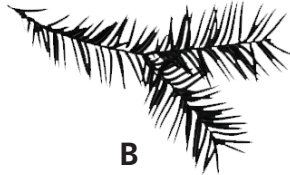
Tips for Identifying New Plants

Sergei Boutenko

NAME THESE PLANTS



A



B



C



D



E



F



G



H



I

Answers can be found on page three.

Sergei's SIMPLE RULES FOR FORAGING

1

Don't eat something
if you don't know what it is!

2

When trying new food for the first time,
eat a small amount to make sure
your body reacts positively to it.

3

Don't mix wild edibles until
you know how they affect your body.

www.SergeiBoutenko.com

Copyright © 2014 by Sergei Boutenko, Raw Family Publishing. All rights reserved.

No part of this book may be reproduced or transmitted in any form or by any means, electronic or mechanical, including photocopying, recording, or by an information storage and retrieval system, without the express written permission of the publisher, except for the inclusion of brief quotations in a review.

Raw Family

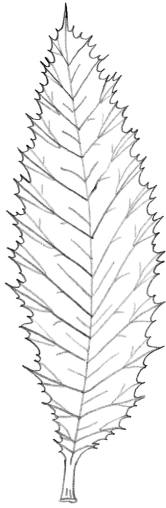
Raw Family Publishing · www.rawfamily.com

In the 21st century, most people can quickly and effortlessly identify brands by their logos, but struggle to recognize common plants growing in their own backyard. Why is this? The answer is: “brand recognition.” The definition of brand recognition is the extent to which the general public is able to identify a brand by its attributes. Simply put, brand recognition is what enables you to recognize a brand by a picture or a logo without the help of words. Big corporations worldwide spend billions every year to ensure that you know who they are. Since the day that we are born we get perpetually bombarded with ads from Coca Cola, Nike, McDonalds, and countless others to ensure that we remember these brands amidst the sea of other companies competing for our attention. And their efforts pay off big time. By the time we reach adulthood, we are well aware of which logo belongs to what company. If plants were marketed to us in this same fashion, we would all be wild edibles experts by age 18. Since, for now, this is not the case, you must take matters into your own hands if you want to be a successful forager. I wrote this eBook to teach you some basics about plant structures. Being able to recognize what’s what should make identifying new plants easier for you.

In reality, learning to recognize plants is easy. To become a plant expert, you simply need a little time and a lot of repetition. All plants are unique in some way. Whether it’s the shape of their leaves, the pattern in which the leaves grow, or the color of their flowers, these distinctive attributes can help you distinguish one plant from the next. The best way to memorize a plant for life is to sit down and study its identifying features. This process usually takes between 30 seconds and 2 minutes depending on the complexity of the plant.

ANSWERS: 1 Twitter · 2 Facebook · 3 Myspace · 4 Nike · 5 Apple Computer
6 McDonalds · 7 Lacoste · 8 Mercedes Benz · A Oak Leaf · B Fir Needles
C Wood Sorrel · D Grape Leaf · E Fir Tree · F Maple Seedling · G Aspen Leaf
H Maple Leaf · I Fir Cone

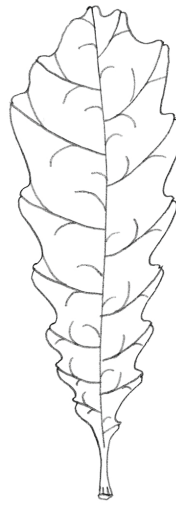
Leaf Margins



Double toothed



Toothed

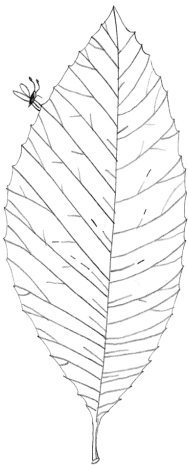


Lobed

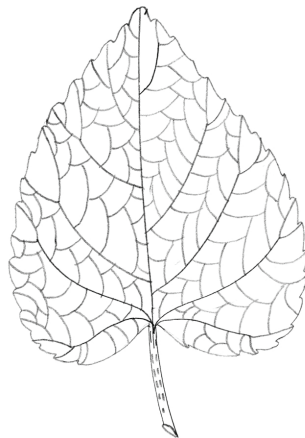


Smooth

Leaf Shapes



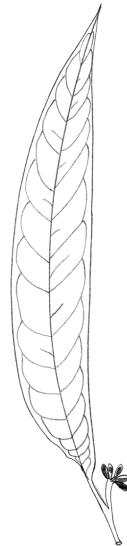
Ovate



Heart-shaped



Linear



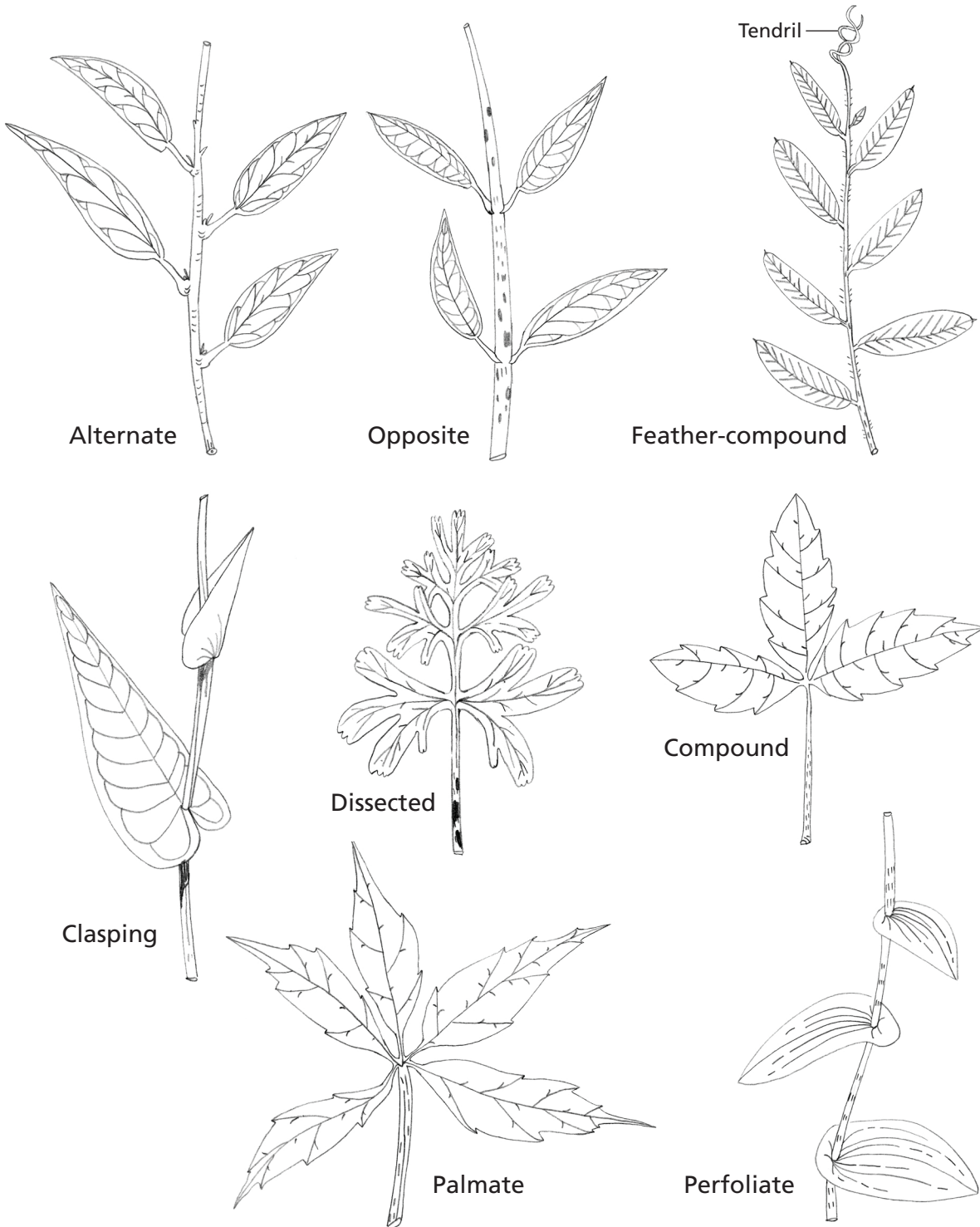
Lance-shaped



Disc-shaped

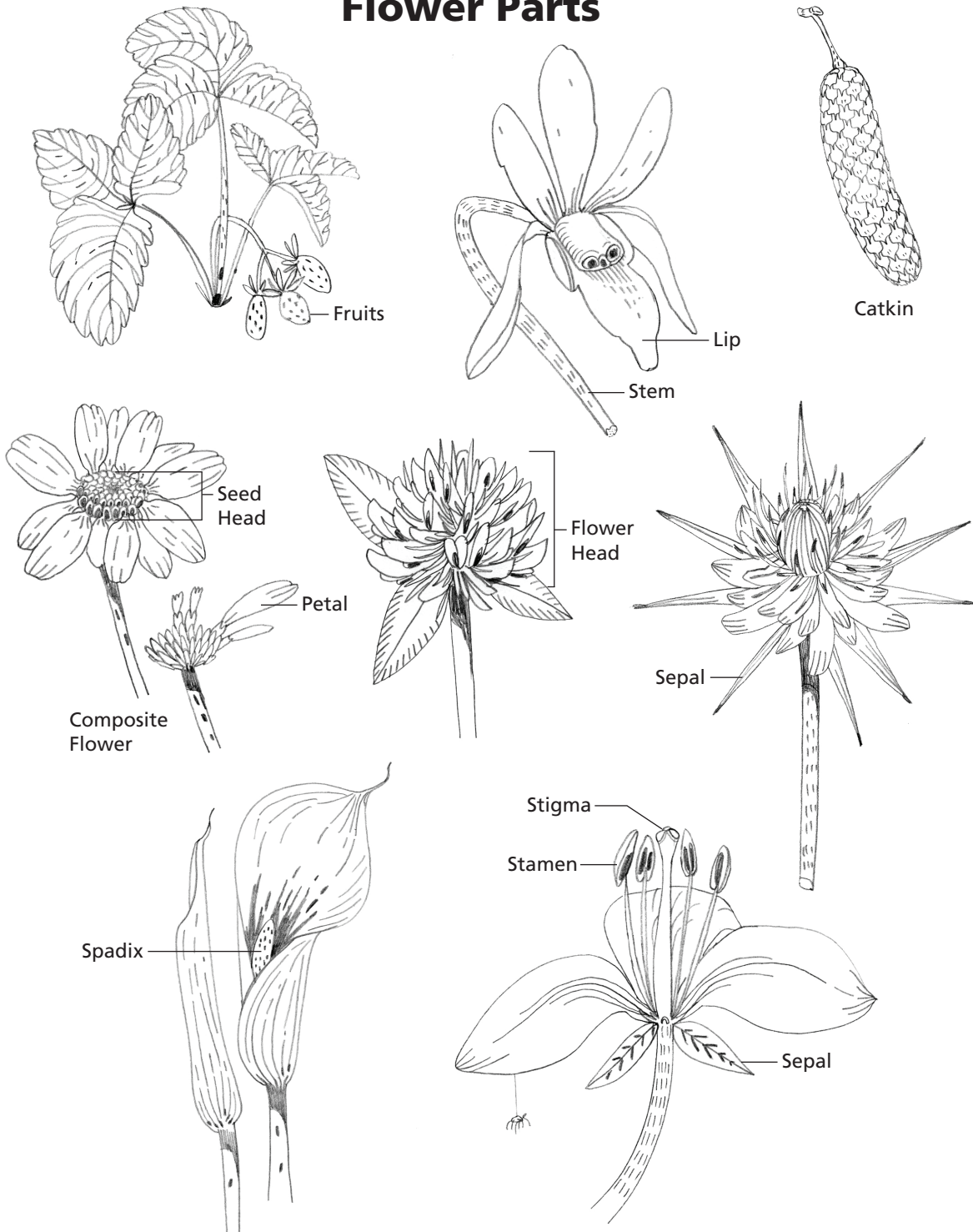
Next time you see some foreign flora, crouch down and spend a few moments studying it. Try to collect as much information about it as possible. Look at the plant's leaf margins, the actual shape of the leaf, the color of the top of the leaf versus the bottom.

Leaf Patterns



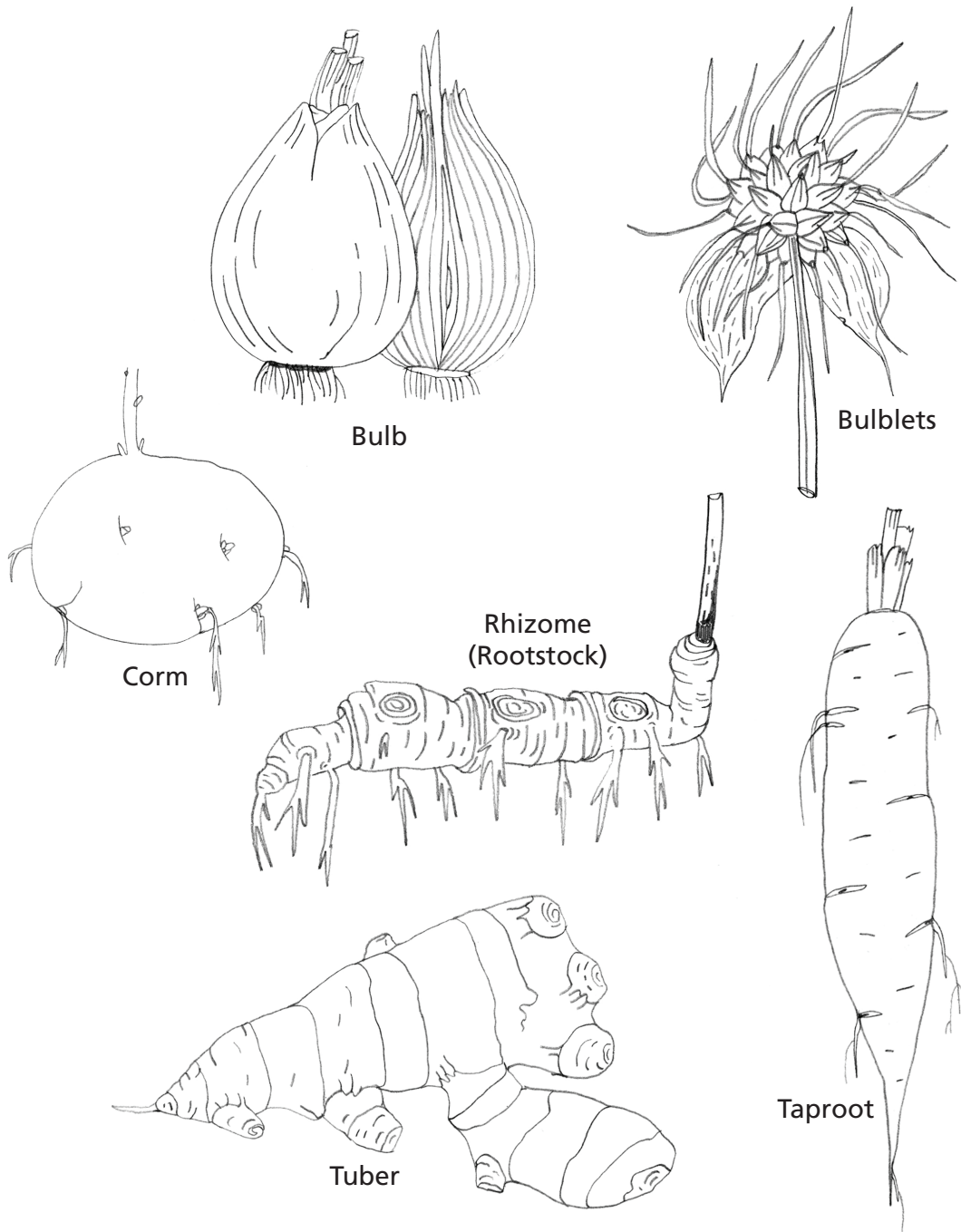
Inspect the pattern in which the leaves grow. Examine the stem to see if it's smooth or hairy. Notice if the stem grows in between the leaves or directly through the center?

Flower Parts



Check out the flowers and their unique traits. Make note of their color. Count the petals. Smell them. Look for fruiting parts. Draw a picture of the flower. A simple sketch can help you notice things you might have missed otherwise. Do whatever it takes to help yourself remember what's in front of you.

Root Structures



If you choose to dig up the roots, notice what kind of root structure is in front of you. Is it a corm, bulb, tuber, taproot, or rhizome?

Congratulations!

If you've taken the time to notice all of these features, you can be sure that this plant will stand out amidst others from now on.

For more information on wild edibles,
pick up a copy of my book
Wild Edibles: A Practical Guide to Foraging.
Now available in bookstores.

