

# Enforced Aero

## REAR DIFFUSER INSTALLATION INSTRUCTIONS

**Warranty does not cover items damaged by customer misuse and or abuse. Enforced Aero is NOT responsible for any and all damages caused by the improper installation of any product. Professional installation is SUGGESTED.**

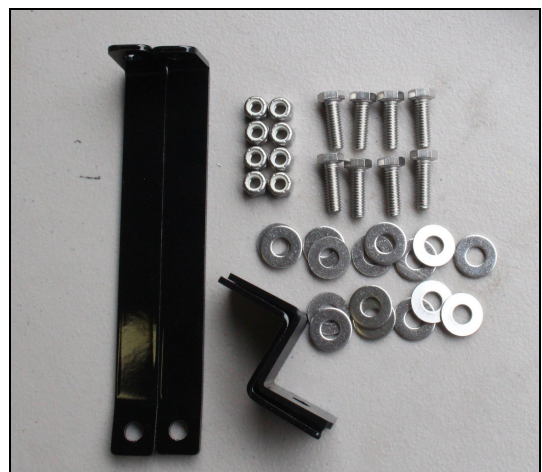
**If you have ANY questions please email ([sales@enforcedaero.com](mailto:sales@enforcedaero.com))**

## HARDWARE & TOOLS:

- Phillips-Head Screwdriver
- Flat-Head Screw Driver
- ½ Socket w/Ratchet
- 12mm Wrench
- ½ Wrench
- ¾ Wrench



- 2 Longer Custom Brackets
- 2 Small Custom Brackets
- 8 x 5/16 Locking Nuts
- 8 x 1in 5/16 Bolts
- 16 Washers



- 6 locking nuts
- 6 pan head screws



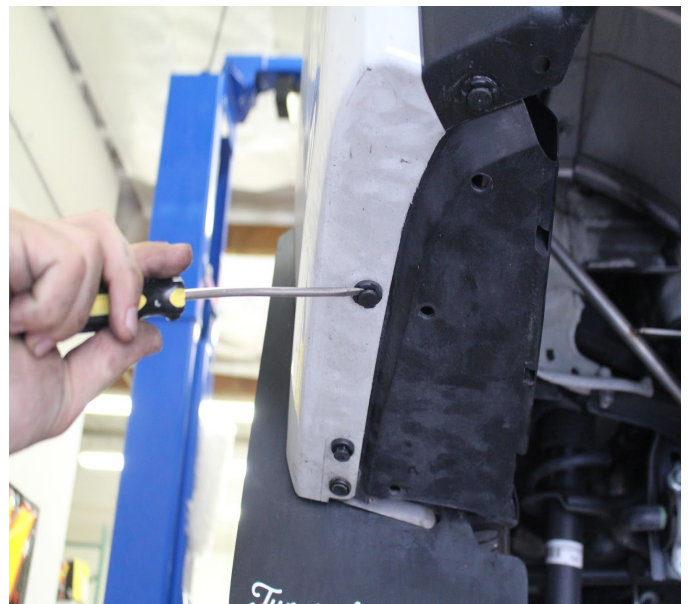
1. After you've unboxed the diffuser you will find 3 pieces, (2 side pieces 'left & right', and the main middle piece. Take the middle piece and one side piece and start connecting them together through the pre-drilled holes using 3-pan head screws and 3 of the locking nuts and do the same for the other side. (Picture of the hardware above). Once done, you will have a full one-piece diffuser and it's time to start installing the diffuser onto the car.
2. Get the car lifted off the ground either via a car jack, or a car lift. This will allow for easy access to all the oem holes we will be connecting to.



3. Start off by unbolting the bottom sway bar bolts on both sides of the car using a 12mm wrench. We will be re-using this bolt so do not throw it away.



4. Next we will be removing all the c-clips located on the bottom of the car. Use either a flathead screwdriver or a c-clip remover to remove them. Be careful not to break any of them! (As shown in the picture below)





5. Take both of the small brackets, place the 1in. bolt & 1 washer through the bracket. Now place the bracket on the inner c-clip holes, (shown in the picture above & below). Make sure the bracket is facing towards the car, secure the bolt by using one of the locking nuts and washer and tighten.



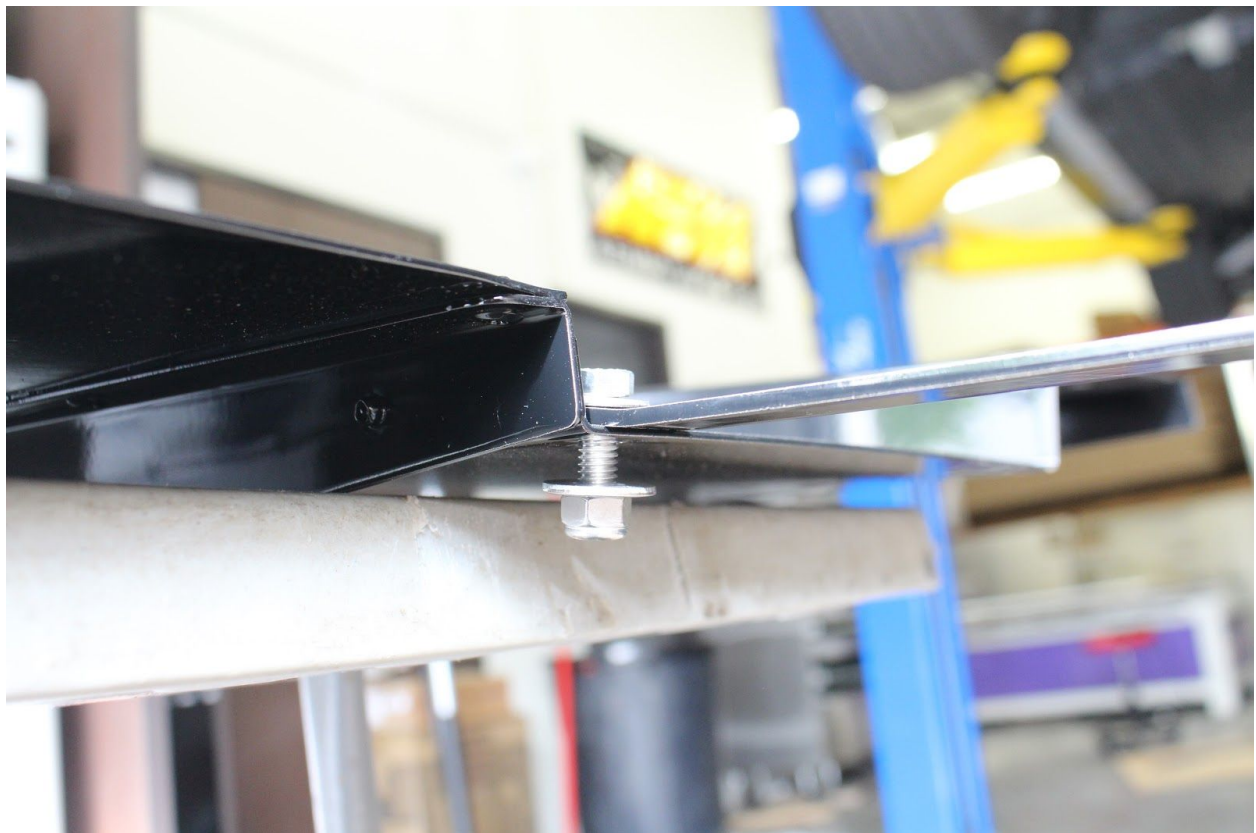
Here's how it should look like once you've mounted both of the brackets to the car.



6. Take both of the long brackets and connect them to the diffuser. (As shown in the picture below.) This will be connecting to the sway bar area where we removed the bolt in 'Step #3.'



Be sure to only hand tighten the nut on. Here's how the mounting should look:  
(Hardware used: 2 x 1 in. bolts, 4 washers, 2 locking nuts)





7. Next we will be completing the small bracket, place a 1in. bolt & washer through the bottom hole of the bracket. Repeat this process for the other side.



8. Now, we will be lifting the diffuser up to the car and connecting it to the small brackets through the pre-drilled holes. Make sure you have 2 washers and 2 locking nuts ready to tighten the diffuser to the brackets. (Picture Below)



9. Now take the c-clips we removed in 'Step 4' and place them through the pre-drilled holes on the side-pieces and connect them directly to the car. Make sure they're secure!





10. Now that the diffuser is almost full mounted up, take the long brackets and start connecting them to the sway bar with the bolt we had removed in 'Step 3'.





11. Final Step, You will now need to reach in the diffuser and tighten the small brackets which we installed in 'Step 5'.



12. Make sure all the bolts are tightened and clips are secure, and congratulations you are now done with the installation!